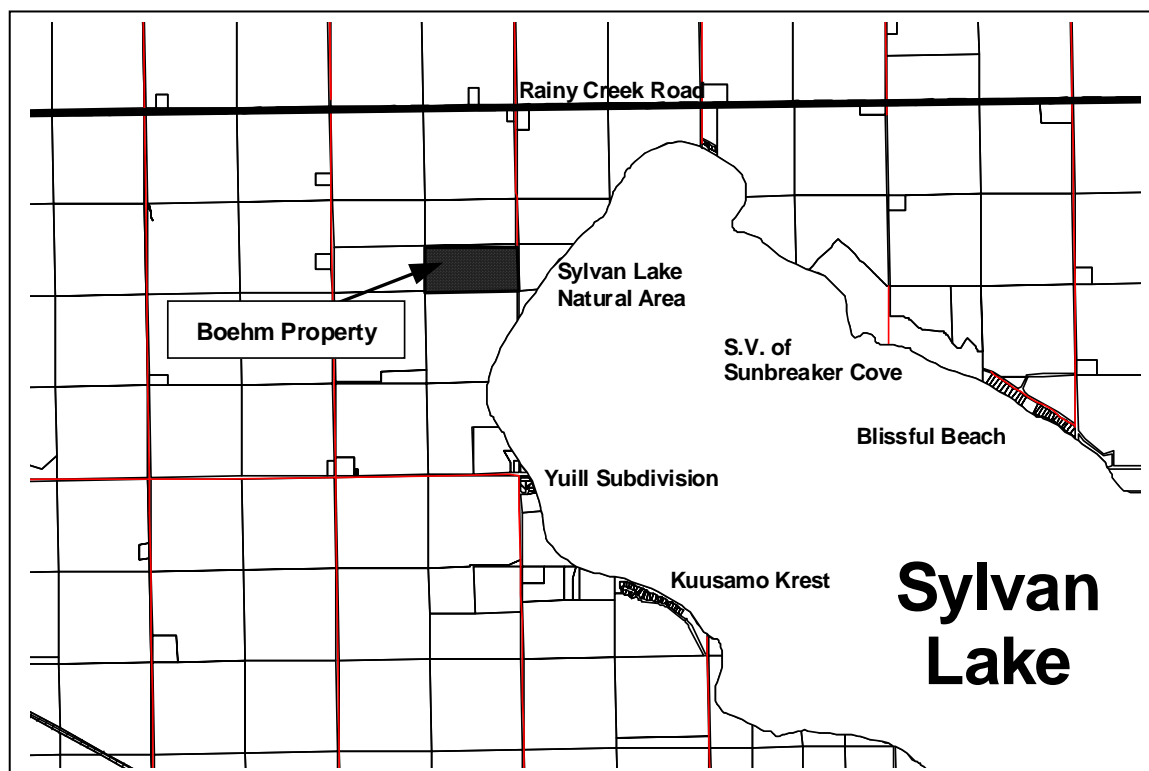




## Public Notice SYLVAN LAKE LAND USE BY-LAW AMENDMENT By-law No. 949/02

Lacombe County has received a request to change the land use zoning of approximately 32.4 ha (80.06 acres) of land, legally described as Lot 1 Plan 942 3049 on the south half of the SE 32-39-2-W5M, from Agricultural "A" to Residential Lakeshore "RL". The zoning change has been requested to allow the owner of the property, Marjorie Boehm, to develop a 62-lot residential subdivision.



A copy of the development proposal may be obtained from the County's Planning and Development Department or visiting the County's website at [www.lacombecounty.com](http://www.lacombecounty.com). All supporting technical documentation has been posted on the website.

Anyone wishing to comment on the proposal will have an opportunity to do so at the public hearing which has been arranged for:-

Date: Tuesday, April 27, 2004  
Time: 9:00 a.m.  
Place: Blindman Valley Agricultural Centre  
*located at 5202 - 51 Street in Bentley  
(west of the Arena)*

If you are unable to attend the hearing, written submissions can be made to the County. You will, however, need to ensure that your comments are received by the County prior to the date of the hearing. All submissions will be public information.

The County's Planning and Development Department staff will be pleased to answer any questions that you might have regarding this development proposal.

ALLAN WILLIAMS, ACP, MCIP  
Manager of Planning Services