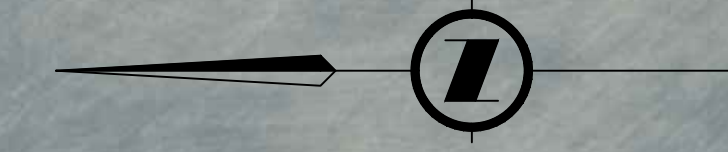


- NOTES:
1. DIMENSIONS ARE METRIC (METRES), UNLESS NOTED OTHERWISE.
 2. PROPERTY LINES ARE PROVIDED FOR INFORMATION ONLY.
 3. COORDINATES IN UTM-GRID, ZONE 12, NAD 83.
 4. LOCATION OF ANY WATER BODIES AND OTHER DRAINAGE COURSES, EXISTING OR PROPOSED STORM WATER DRAINAGE WORKS ILLUSTRATED IN H-158040-MEM-WP-001 DRAINAGE ASSESSMENT.
 5. SITE GRADING AND DRAINAGE ILLUSTRATED IN H-158040_DWG-R1-001 PROCOR JOFFRE IFC TRACK AND GRADE DRAWING PACKAGE.

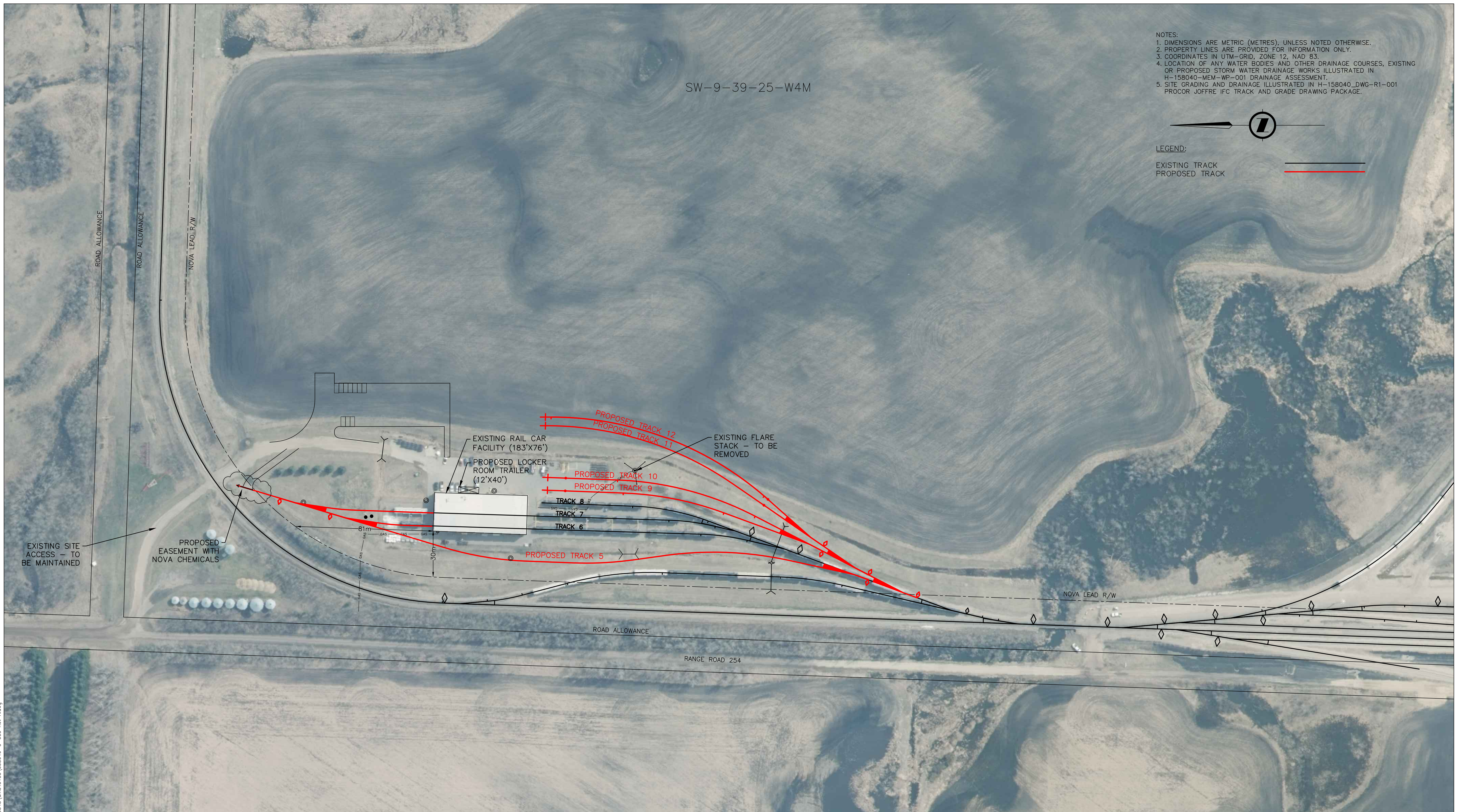


LEGEND:

EXISTING TRACK

PROPOSED TRACK

SW-9-39-25-W4M



Apr 12, 2017 10:17am Login name: wd860548 Drawing Name: C:\working\hina\val_trans\wd860548\dwg\358040-C-005 Rev A.dwg

DRAWING NUMBER		DRAWING TITLE	
		REFERENCE DRAWINGS	

This document is issued for the party which commissioned it and for specific purposes connected with the captioned project only. It should not be relied upon by any other party or used for any other purpose.

We accept no responsibility for the consequences of this document being relied upon by any other party, or being used for any other purpose, or containing any error or omission which is due to an error or omission in data supplied to us by other parties.

This document contains confidential information and proprietary intellectual property. It should not be shown to other parties without consent from us and from the party which commissioned it.

NO.	DESCRIPTION	CHK'D	APP'D	DATE
A	ISSUED FOR COUNTY REVIEW			04/11/17
REVISIONS				

ENGINEER STAMP:

NOT FOR
CONSTRUCTION

HATCH

DESIGNED BY: D.X. DATE: 04/11/17	DRAWN BY: D.X. DATE: 04/11/17
CHECKED BY: L.D.G. DATE: 04/11/17	PROJECT MANAGER: L.D.G. DATE: 04/11/17

BAR SCALE: 0 10 20 30 50m

HATCH PROJECT No: H-158040 DWG SCALE(FULL SIZE) 1:1000 DWG No: H-158040-C-005

CLIENT: **PROCOR**

PROPOSED FACILITY EXPANSION
JOFFRE, ALBERTA
SITE PLAN

SHT No	REV No
1/1	A