

## BYLAW NO. 1128/10

A BYLAW OF LACOMBE COUNTY, IN THE PROVINCE OF ALBERTA, TO AMEND THE LACOMBE COUNTY LAND USE BYLAW NO. 1056/07, PURSUANT TO THE MUNICIPAL GOVERNMENT ACT, BEING CHAPTER M-26-1 OF THE REVISED STATUTES OF ALBERTA 2000, AS AMENDED

THE COUNCIL of Lacombe County, duly assembled, enacts that Bylaw No. 1056/07 be amended as follows:

approximately 37.24 hectares (92.02 acres) of land legally described as the West half of Section 34 Township 39 Range 2 West of the 4<sup>th</sup> Meridian, as outlined in red on Schedule 'A' attached hereto and forming part of this Bylaw

from Agricultural "A" to Residential Conservation Cluster "R-RCC"

INTRODUCED AND GIVEN FIRST READING this 16<sup>th</sup> day of September, 2010

GIVEN SECOND READING this 9<sup>th</sup> day of December, 2010

GIVEN THIRD AND FINAL READING this 22<sup>nd</sup> day of September, 2011

---

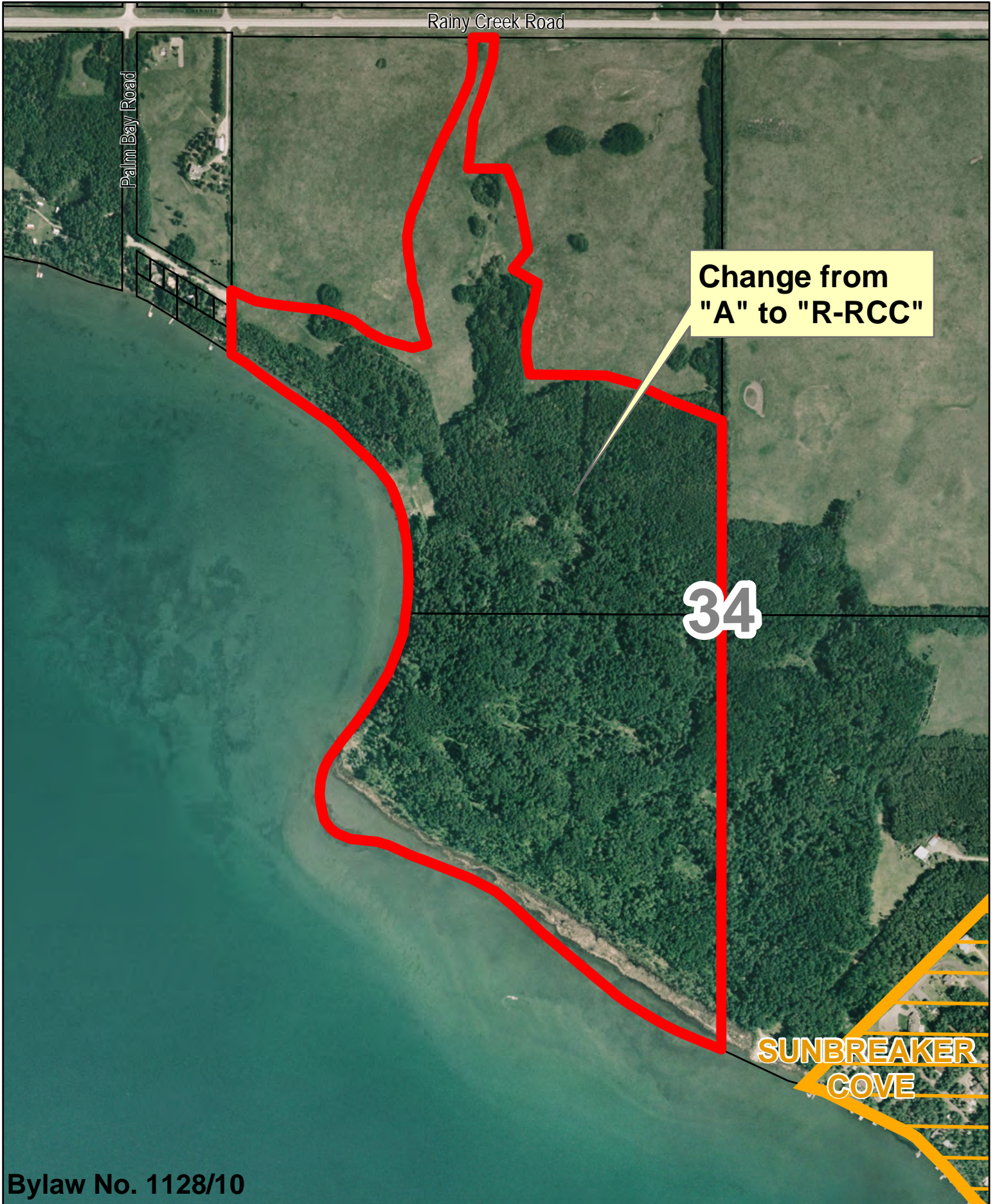
Terry Engen  
Reeve

---

Terry Hager  
County Commissioner

Lacombe County  
W1/2-34-39-02-W5M

Schedule 'A'



Change from  
"A" to "R-RCC"

34

SUNBREAKER  
COVE