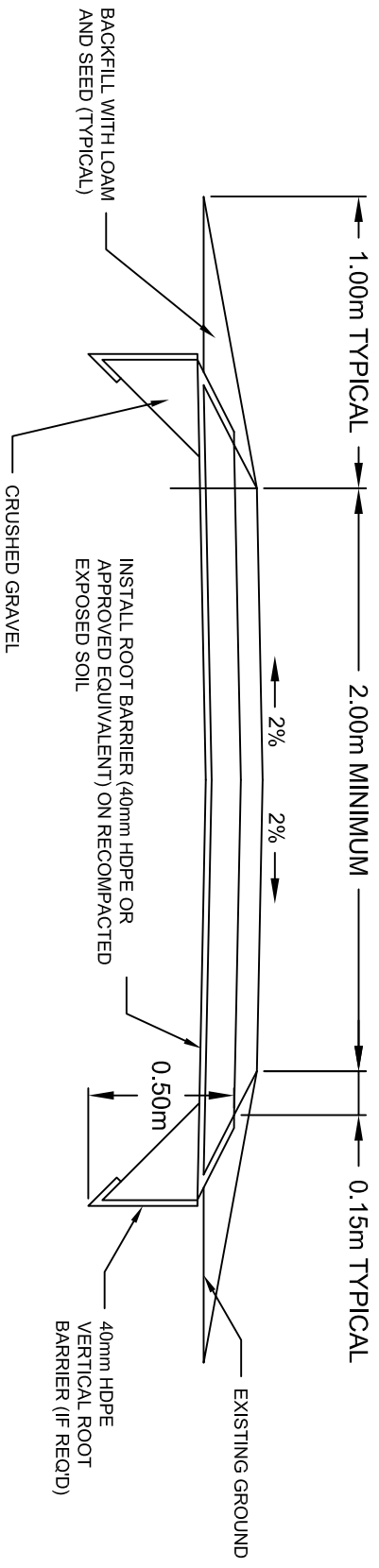


Table of Contents

F-1	LOCAL TRAIL	1
F-2	REGIONAL TRAIL	2
F-3	SAFETY RAILING.....	3
F-4	PRECAST CONCRETE TIRE STOP	4
F-5	CONCRETE BENCH.....	5
F-6	CONCRETE PICNIC TABLE.....	6
F-7	WASTE RECEPTACLE.....	7
F-8	FISH CLEANING STATION PLAN AND ELEVATIONS.....	8
F-9	FISH CLEANING STATION SECTION AND DETAILS.....	9
F-10	TRAIL ENTRANCE PLAN	10
F-11	REMOVABLE BOLLARDS.....	11
F-12	PERMANENT BOLLARDS.....	12
F-13	ASPHALT WHEELCHAIR RAMP.....	13
F-14	STEEL PIPE GATE.....	14
F-15	STEEL PIPE GATE LOCKING SLEEVE DETAILS.....	15



MINIMUM STRUCTURE



STRUCTURAL REQUIREMENTS

- ACP - COMPACTED TO 98% STANDARD PROCTOR DENSITY
- GBC - COMPACTED TO 98% STANDARD PROCTOR DENSITY
- SUBBASE - REMOVE ORGANIC SOILS, RECOMPACT EXPOSED SOILS TO MINIMUM 95% STANDARD PROCTOR DENSITY, IF NECESSARY ADD GRANULAR FILL TO BRING BASE TO APPROPRIATE GRADE COMPACTED TO MINIMUM 95% STANDARD PROCTOR DENSITY

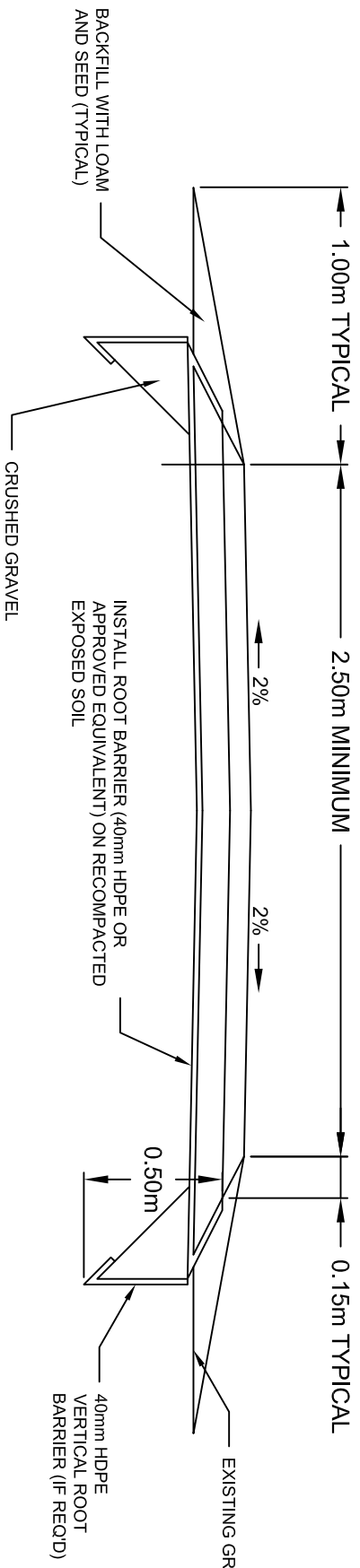
REVISION	DATE
1	01/03/17

LOCAL TRAIL

PROJECT NUMBER	
DRAWN BY	BMAIER
SCALE	NTS
DATE	APRIL 7, 2017
DRAWING NUMBER	

F-1





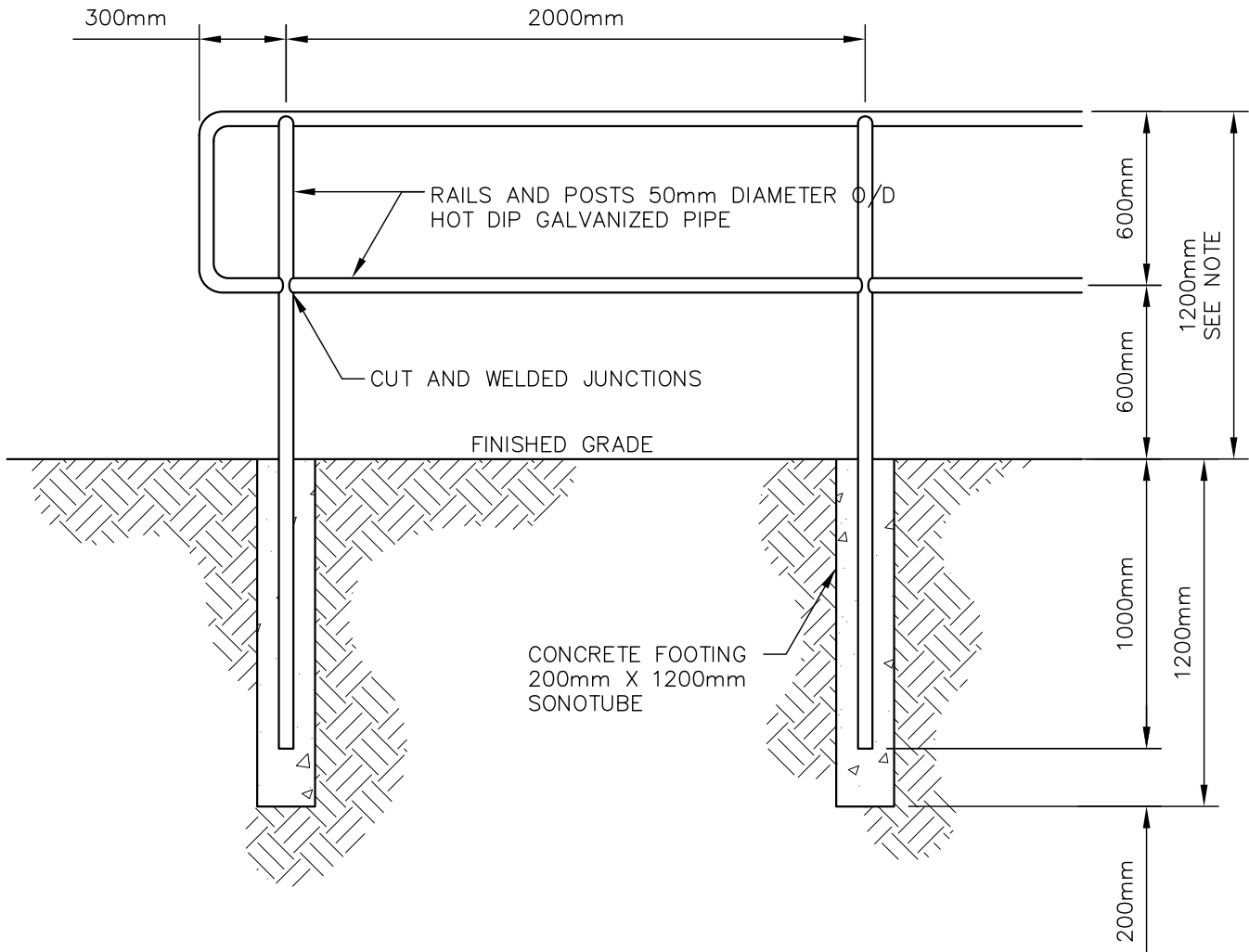
STRUCTURAL REQUIREMENTS
 ACP - COMPACTED TO 98% STANDARD PROCTOR DENSITY
 GBC - COMPACTED TO 98% STANDARD PROCTOR DENSITY
 SUBBASE - REMOVE ORGANIC SOILS, RECOMPACT EXPOSED SOILS TO MINIMUM 95% STANDARD PROCTOR DENSITY, IF NECESSARY ADD GRANULAR FILL TO BRING BASE TO APPROPRIATE GRADE COMPACTED TO MINIMUM 95% STANDARD PROCTOR DENSITY

REVISION	DATE
1	01/03/17

REGIONAL TRAIL

PROJECT NUMBER	
DRAWN BY	BMAIER
SCALE	NTS
DATE	APRIL 7, 2017
DRAWING NUMBER	F-2





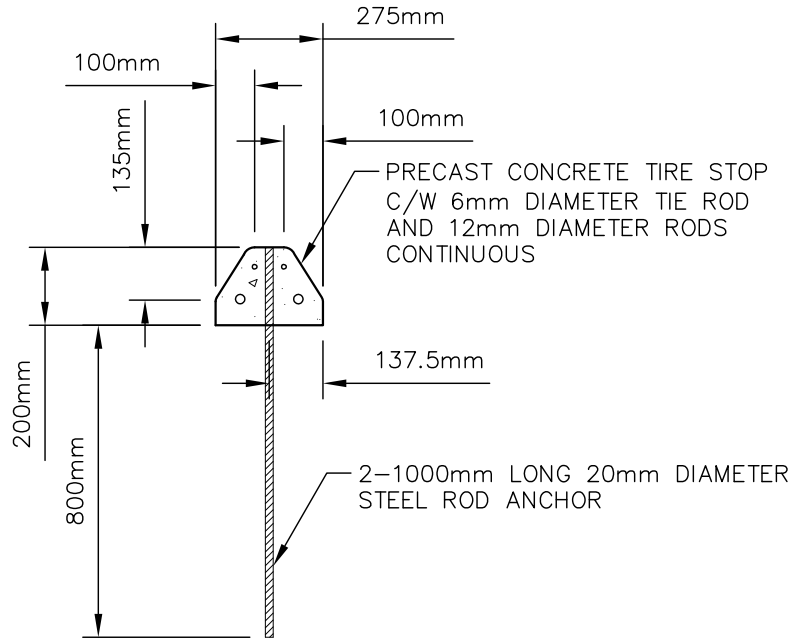
NOTE:
 TOTAL RAILING HEIGHT INCREASES TO 1400mm WHEN
 REQUIRED ON A BRIDGE.

I	10/04/17
REVISION	DATE

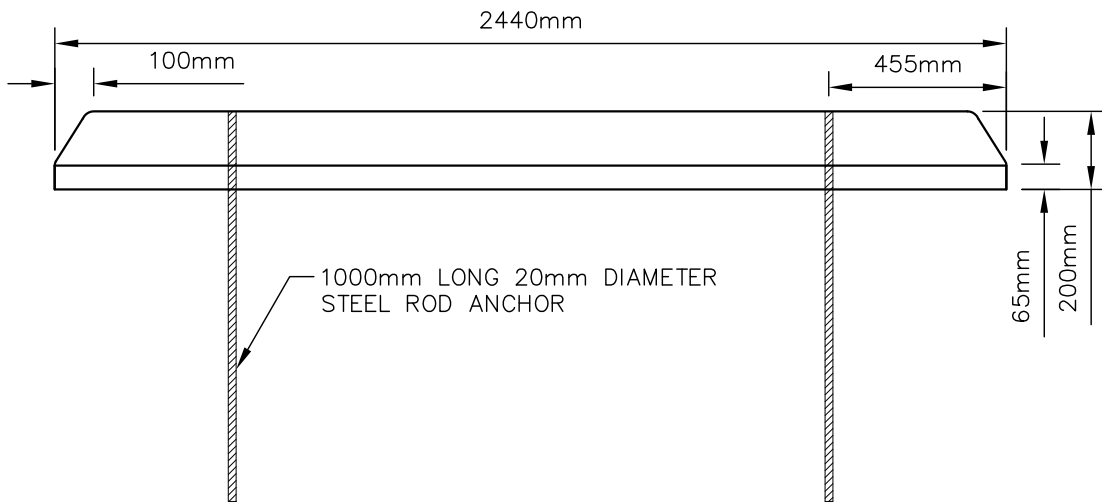


SAFETY RAILING

SCALE	NTS	DRAWN BY	BMAIER	DRAWING NUMBER	F-3
DATE	APRIL 10, 2017				



SIDE VIEW



FRONT VIEW

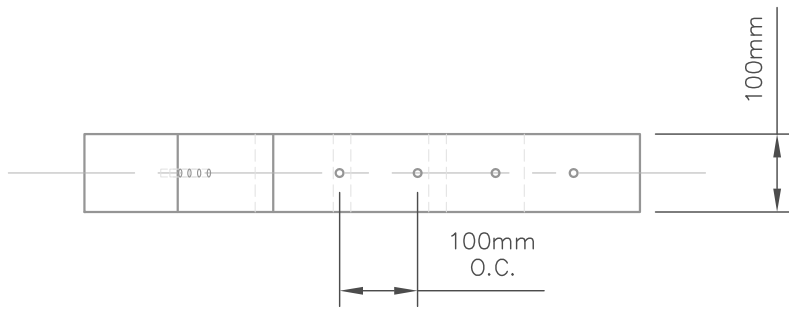
I	10/04/17
REVISION	DATE



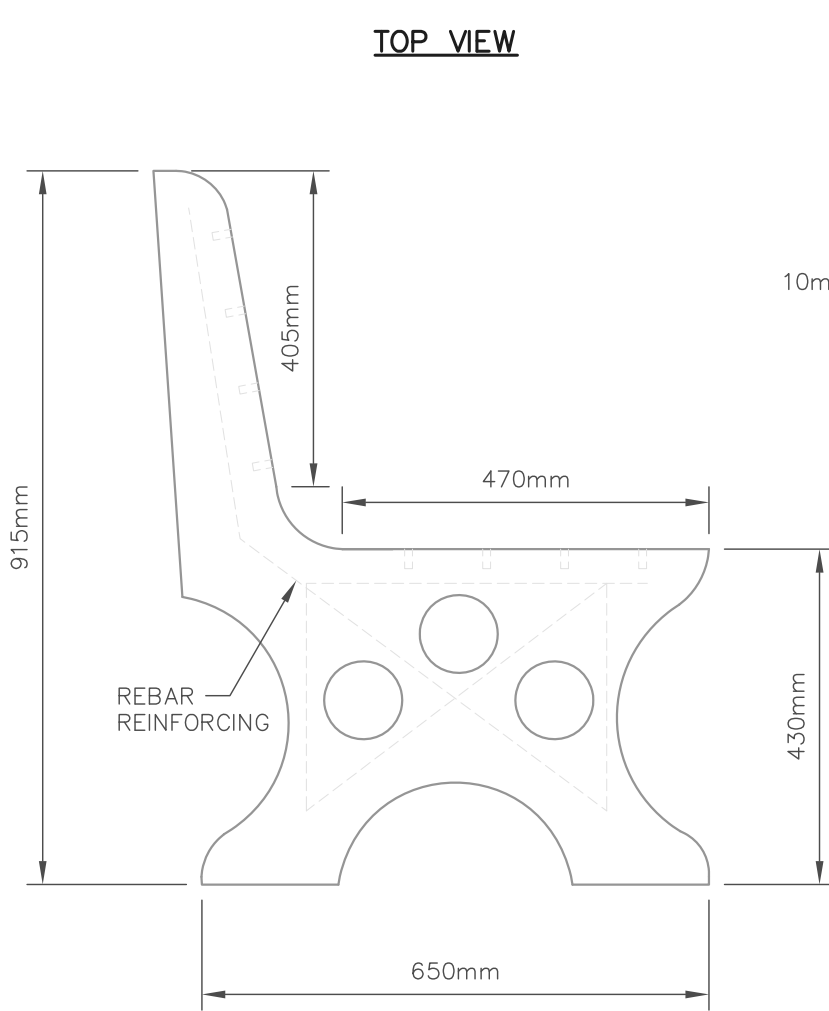
PRECAST CONCRETE TIRE STOP

SCALE	DRAWN BY
NTS	BMAIER
DATE	APRIL 10, 2017

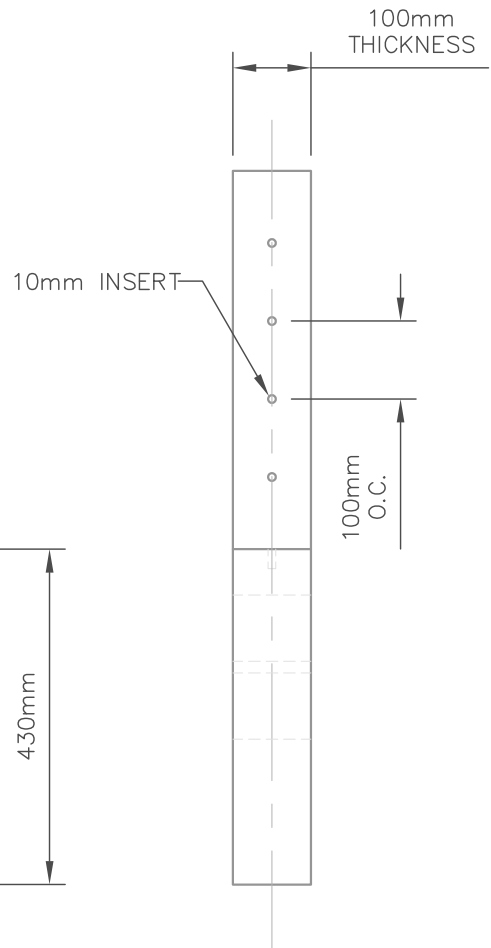
DRAWING NUMBER **F-4**



TOP VIEW



SIDE VIEW



FRONT VIEW

SPECIFICATIONS:
 54kg (118lbs)
 EXPOSED AGGREGATE FINISH
 SEAT AND BACK MADE FROM CONCRETE

I	10/04/17
REVISION	DATE

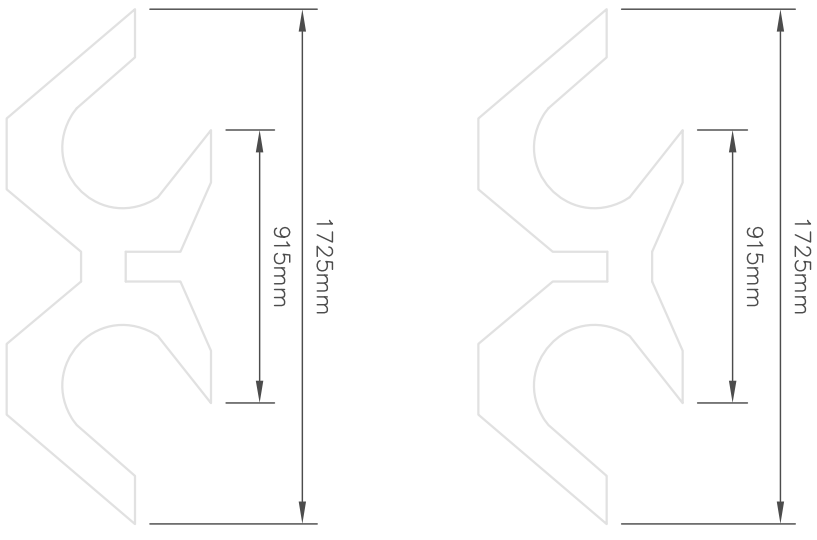
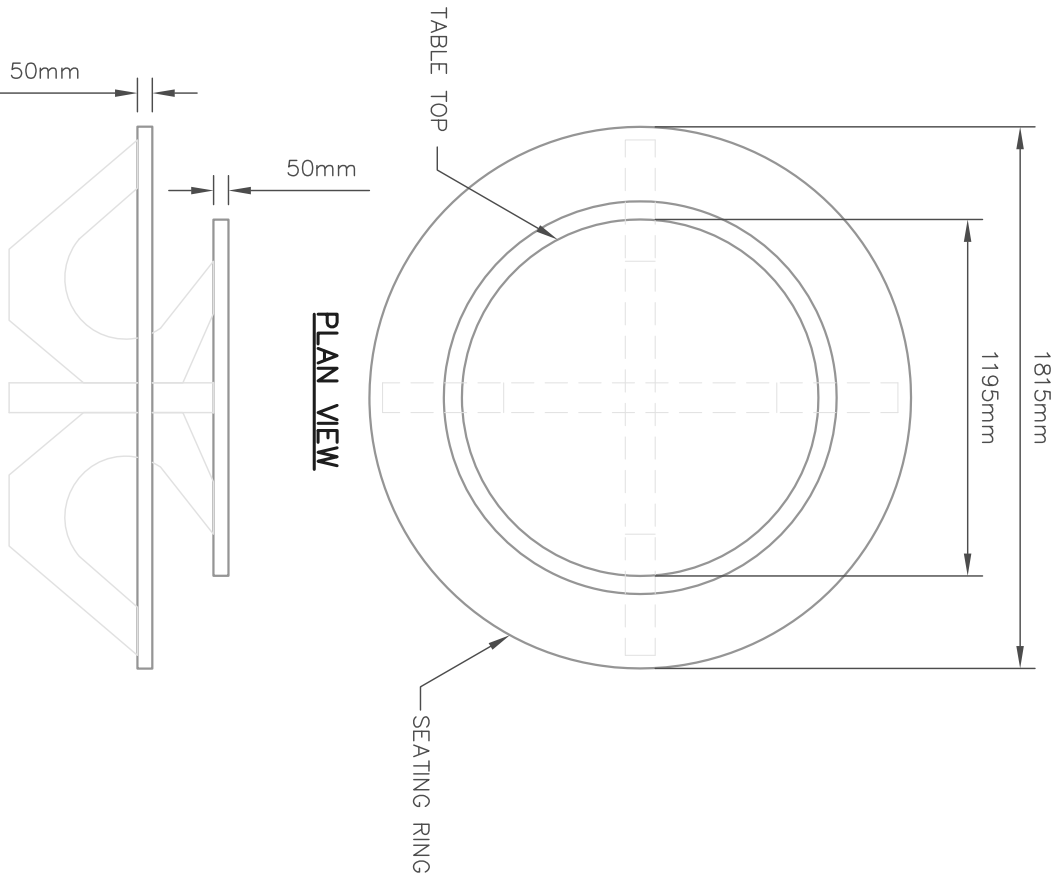


CONCRETE BENCH

SCALE NTS DRAWN BY BMAIER

DATE APRIL 10, 2017

DRAWING NUMBER **F-5**



REVISION	DATE
I	11/04/17

CONCRETE PICNIC TABLE

PROJECT NUMBER

DRAWN BY

BMAIER

SCALE

NTS

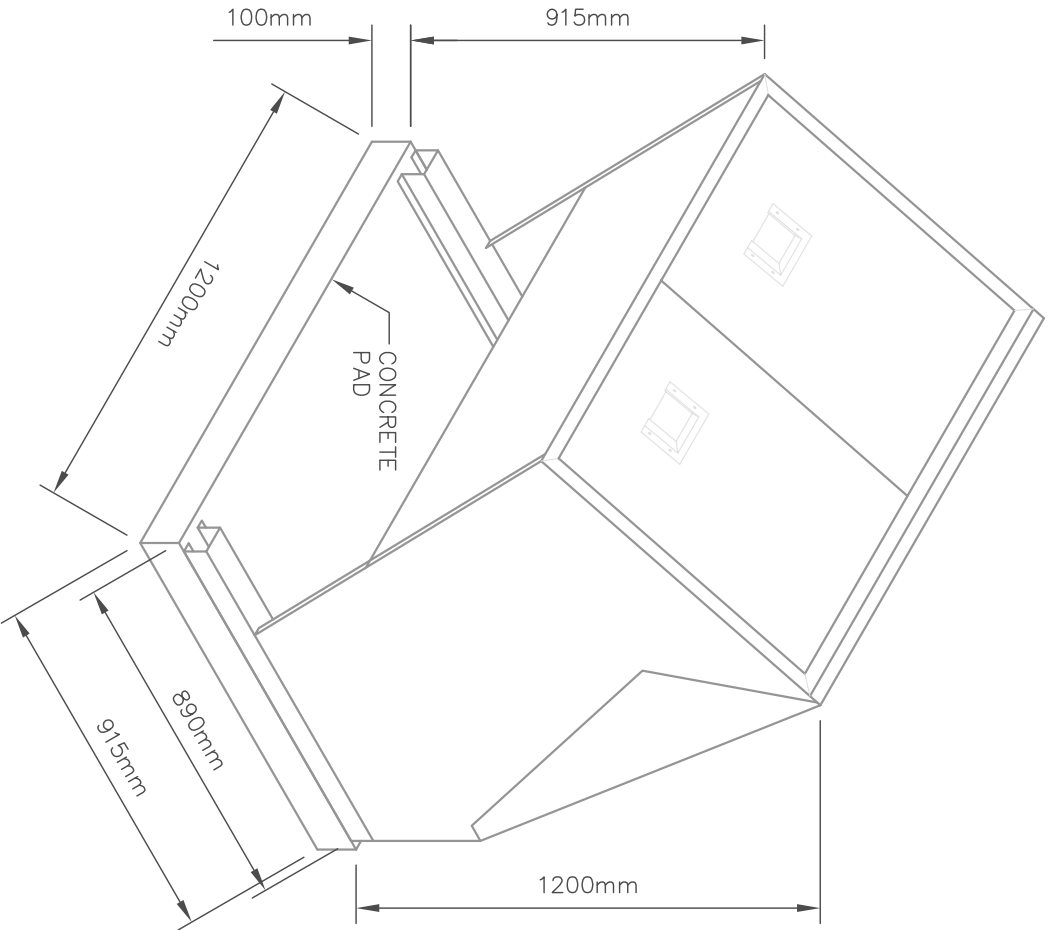
DATE

APRIL 11, 2017

DRAWING NUMBER

F-6





DIMENSIONS /CAPACITY:

- WIDTH: 1200mm
- DEPTH: 1070mm
- HEIGHT: 1200mm
- WEIGHT: 135kg
- CAPACITY: 500L
- SIZE OF GARBAGE BAGS: 1070mm X 1270mm
- 2 USER DOORS: 485mm X 560mm

CONTAINER SPECIFICATIONS:

- FRAME/HOUSING 12 GAUGE (2.6) GALVANNEAL STEEL
- DOORS 14 GAUGE (1.9) GALVANNEAL STEEL
- ANIMAL RESISTANT DESIGN
- FASTENERS AND HARDWARE ARE ZINC PLATED
- HINGES AND LATCHES ARE STAINLESS STEEL
- USER DOORS ARE DOUBLE BENT ON ALL EDGES AND HAVE A STAINLESS STEEL HANDLE. MAXIMUM GAP BETWEEN DOOR AND FRAME IS 3.2mm
- UNLOADING DOORS HAVE ONE STAINLESS STEEL GRAVITY LATCH
- LOADING DOORS HINGED SO THAT THEY WILL NOT STAY IN THE OPEN POSITION
- INTEGRAL HINGED FRAME FOR BAG SUPPORT AND SERVICING
- CONTAINER INCORPORATES WATER DEFLECTOR TO PREVENT ACCUMULATION IN BAG

PAINT/ASSEMBLY/LABEL SPECIFICATION

- ALL COMPONENTS DEGREASED AND PHOSPHATE ETCHED IN SUBMERSIBLE BATH
- CONTAINERS ASSEMBLED WITH RIVETS
- CONTAINERS TO BE POWDERCOATED BEFORE FINAL ASSEMBLY

MOUNTING PAD SPECIFICATIONS

- CONCRETE MOUNTING IS TYPE 30 CEMENT WITH A MINIMUM STRENGTH OF 30 MPA
- CONCRETE PAD DIMENSIONS: 915mm X 1220mm X 100mm THICK
- CONCRETE PAD WEIGHT: 270kg
- CONCRETE PAD TO BE SET ON A 100mm THICK COMPACTED GRAVEL BASE.

REVISION	DATE
I	11/04/17

WASTE RECEPTACLE

PROJECT NUMBER

DRAWN BY

BMAIER

SCALE

NTS

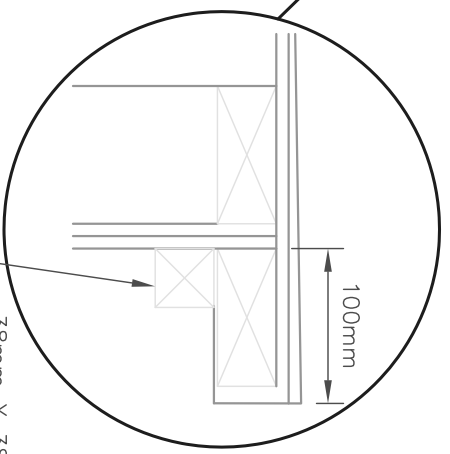
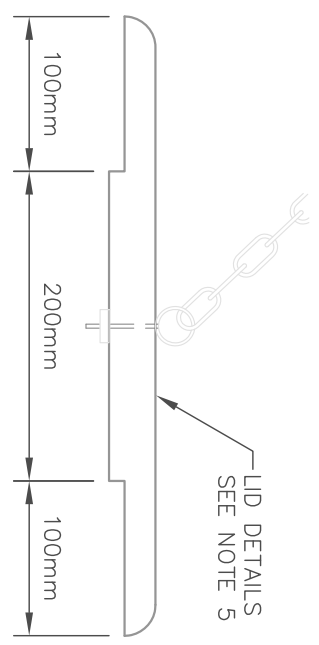
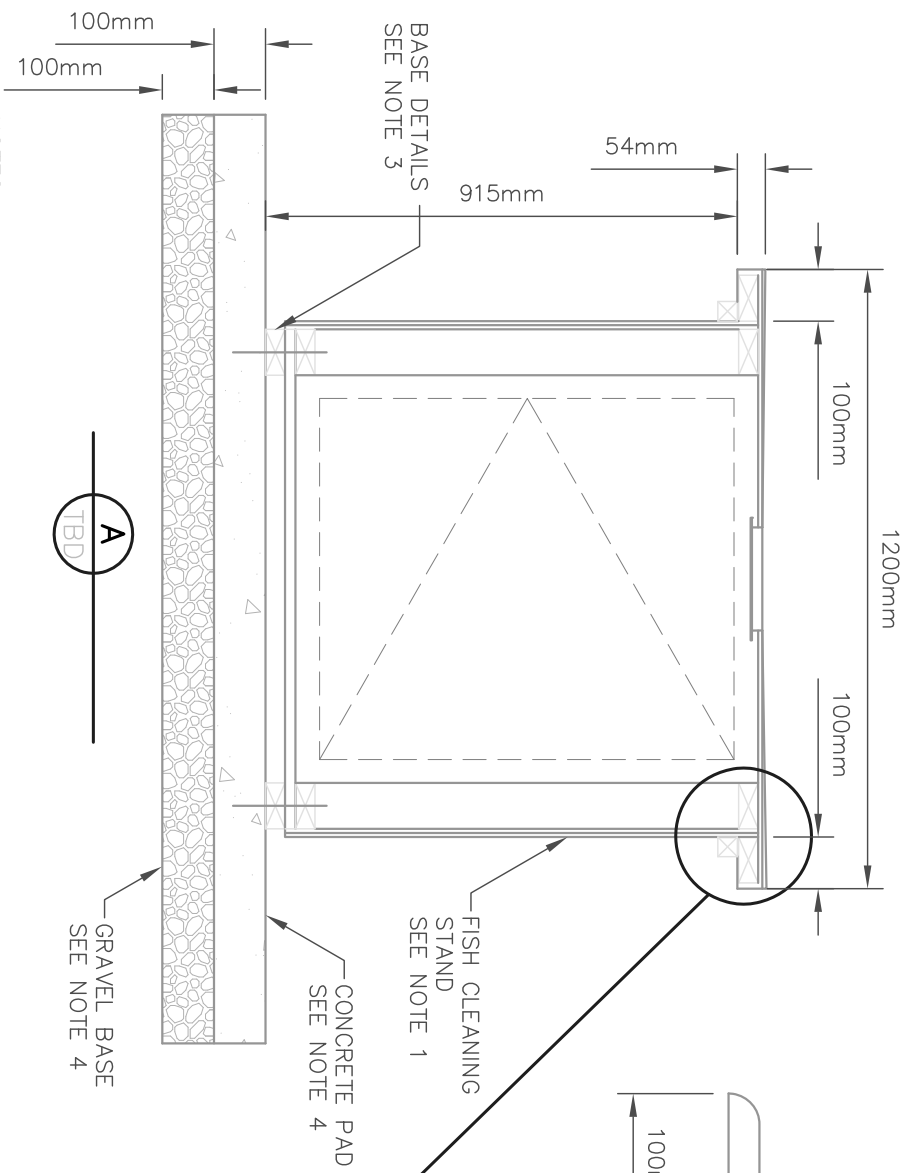
DATE

APRIL 11, 2017

DRAWING NUMBER

F-7





- NOTES:**
1. FISH CLEANING STAND 38mm X 89mm FRAMING WITH 19mm Z 140mm VERTICAL CHANNEL SIDING ON 8mm PLYWOOD SHEETING
 2. SHEET METAL TOP OVER 8mm PLYWOOD SHEETING AND 38mm X 89mm FRAME. SHEETING WRAPS AROUND LIP AND OPENING.
 3. SHEET METAL SECURED WITH SCREWS TO UNDERSIDE OF TOP (AND 38mm X 38mm TRIM). OPENING SIZE 200mm X 200mm
 4. BASE FRAMING 39mm X 89mm WITH 8mm PLYWOOD BOTTOM BOLTED THROUGH (8mm DIAMETER ANCHOR BOLTS IN CONCRETE PAD)
 5. CONCRETE PAD 100mm THICK OVER 100mm COMPACTED GRAVEL BASE. 30MPA CONCRETE, 2% SLOPES, BROOM FINISH WITH TOOLED EDGES.
 6. 300mm X 300mm X 19mm PLYWOOD LAMINATED TO 200mm X 200mm PLYWOOD X 19mm DIAMETER X 40mm EYE BOLT.
 7. CONNECT LID TO 900mm LENGTH OF CHAIN FROM EYE BOLT ON LID AND BACKSIDE OF STAND.

LID DETAIL

A
TBD

GRAVEL BASE
SEE NOTE 4

CONCRETE PAD
SEE NOTE 4

FISH CLEANING
STAND
SEE NOTE 1

38mm X 38mm
TRIM SEE NOTE 2

LID DETAILS
SEE NOTE 5

REVISION	DATE
1	11/04/17

FISH CLEANING STATION SECTION AND DETAILS

PROJECT NUMBER

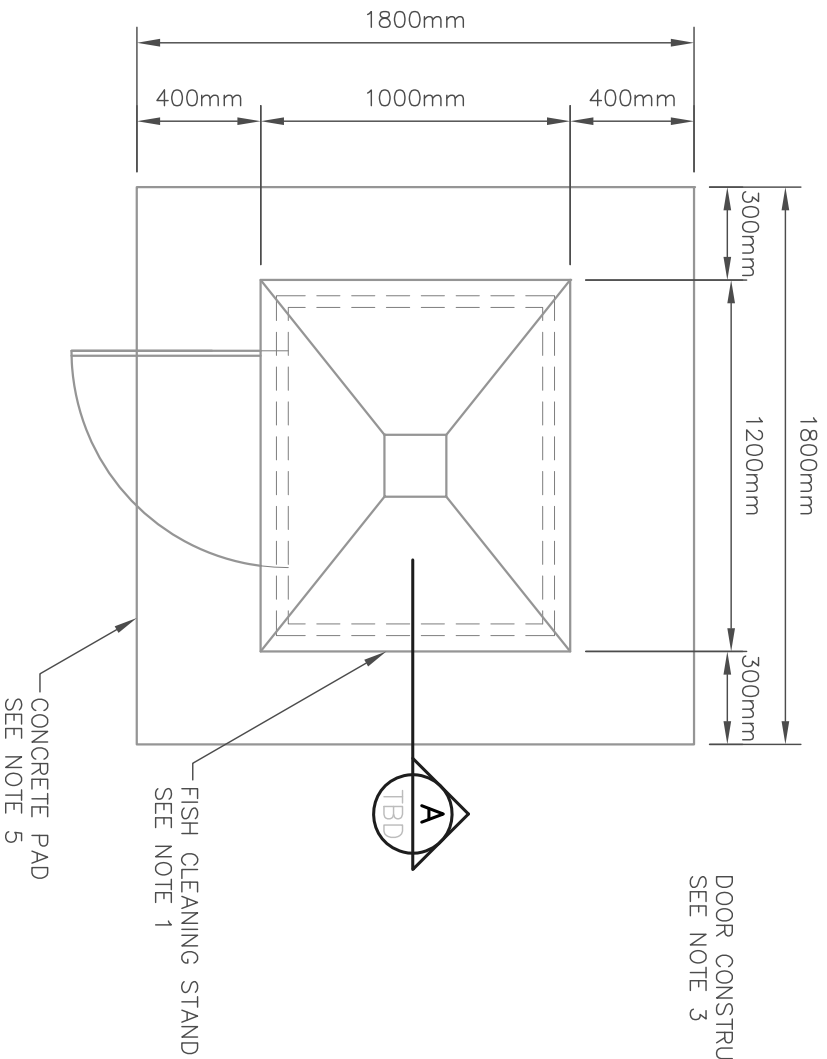
DRAWN BY
BMAIER

SCALE
NTS

DATE
APRIL 11, 2017

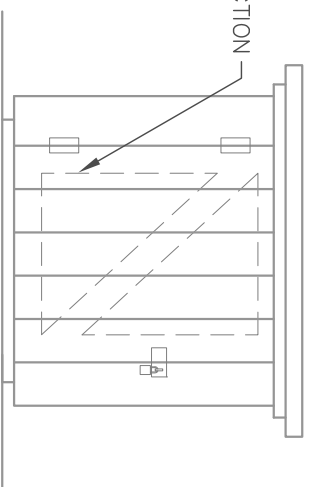
DRAWING NUMBER

F-8

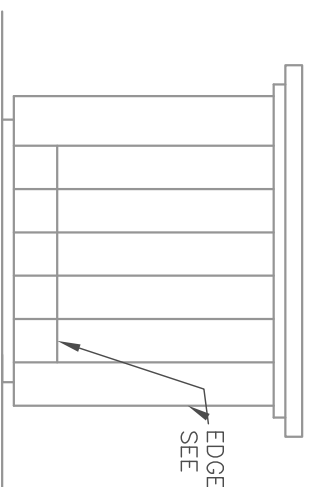


PLAN

DOOR CONSTRUCTION
SEE NOTE 3



FRONT ELEVATION



SIDE ELEVATION

- NOTES:**
1. FISH CLEANING STAND 38mm X 89mm FRAMING WITH 19mm Z 140mm VERTICAL CHANNEL SIDING ON 8mm PLYWOOD SHEETING
 2. SHEET METAL TOP OVER 8mm PLYWOOD SHEETING AND 38mm X 89mm FRAME. SHEETING WRAPS AROUND LIP AND OPENING.
 3. SHEET METAL SECURED WITH SCREWS TO UNDERSIDE OF TOP (AND 38mm X 38mm TRIM). OPENING SIZE 200mm X 200mm
 4. DOOR OPENING 720mm X 855mm HIGH, WITH 38mm X 89mm FRAMING TO THE INSIDE. TWO HEAVY DUTY HINGES BOLTED THROUGH DOOR AND JAMB SECTIONS. PROVIDE LATCH/HASP WITH PADLOCK.
 5. 19mm X 140mm TRIM AT THE CORNERS AND BASE.
 6. CONCRETE PAD 100mm THICK OVER 100mm COMPACTED GRAVEL BASE. 30MPA CONCRETE, 2% SLOPES, BROOM FINISH WITH TOOLED EDGES.

REVISION	DATE
1	11/04/17

FISH CLEANING STATION SECTION AND DETAILS

PROJECT NUMBER

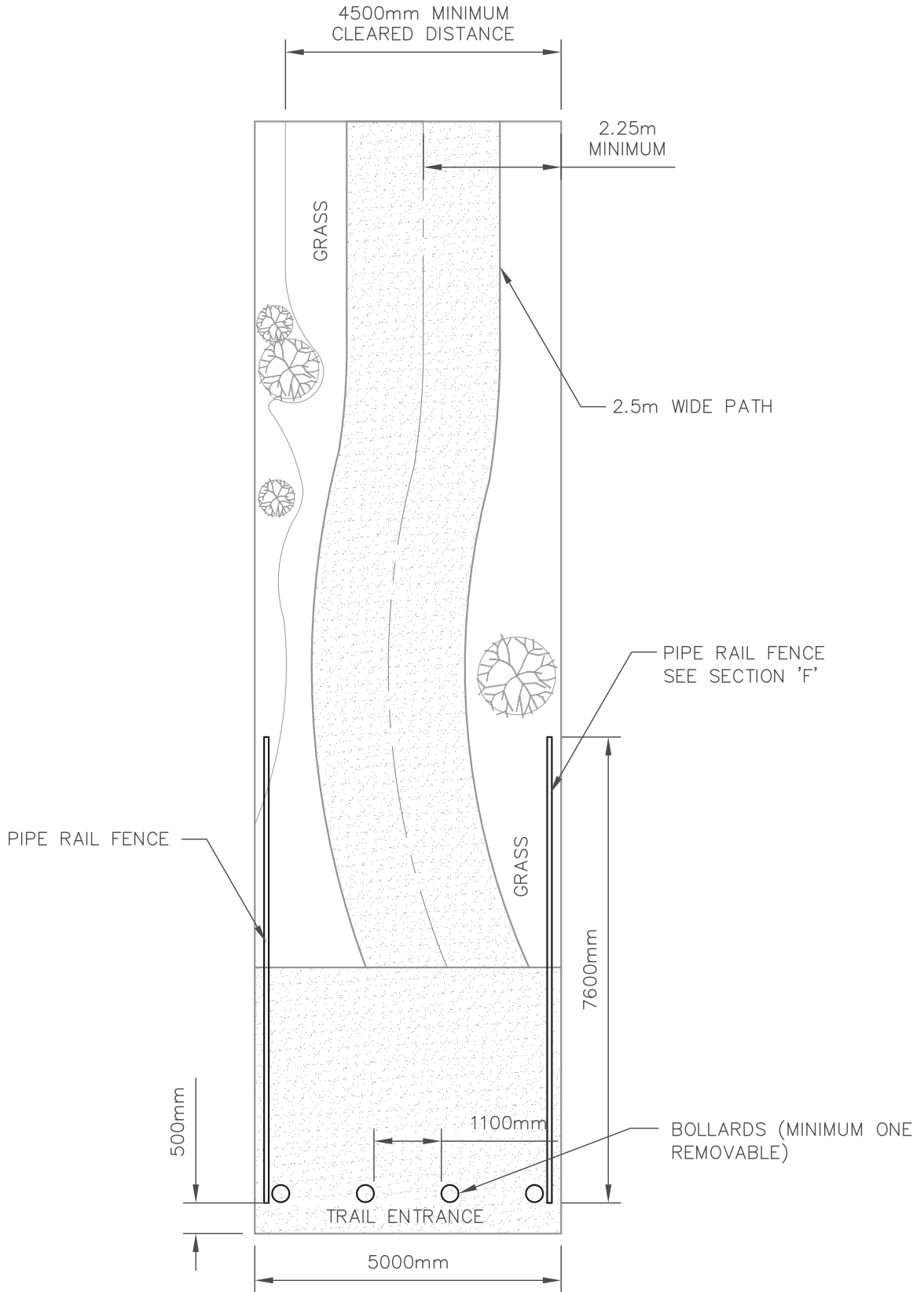
DRAWN BY
BMAIER

SCALE
NTS

DATE
APRIL 11, 2017

DRAWING NUMBER

F-9

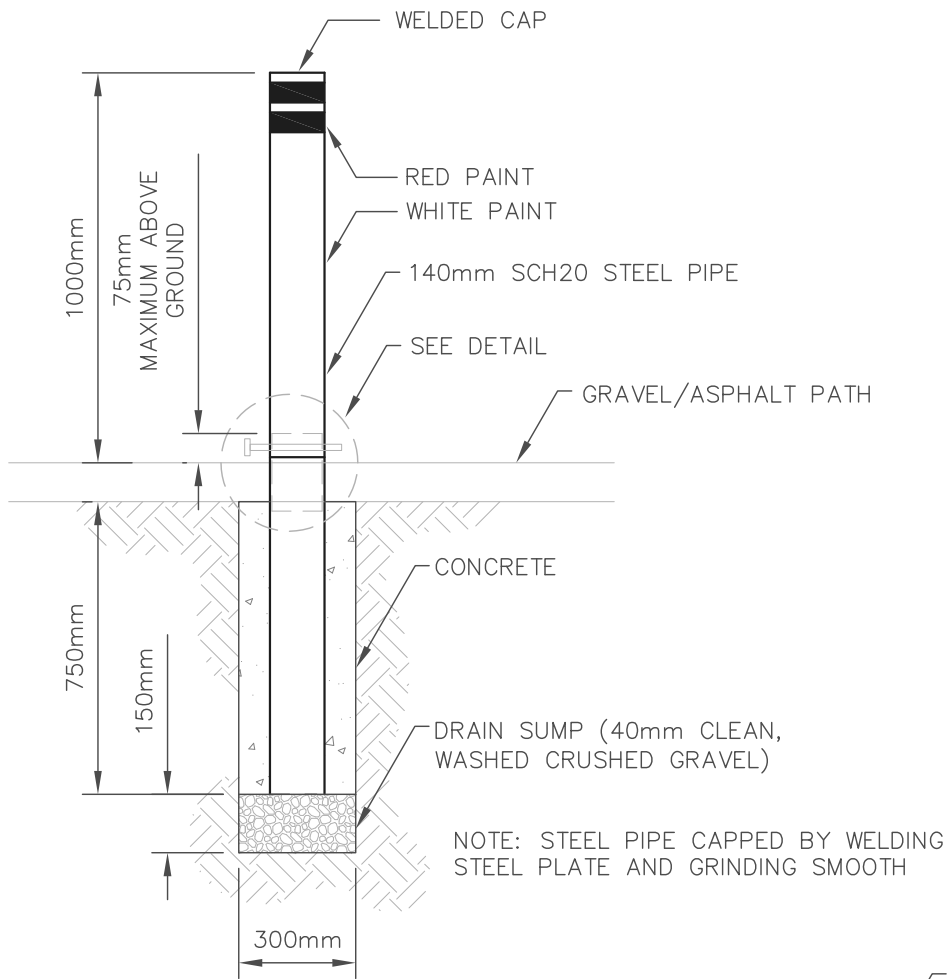


I	11/04/17
REVISION	DATE

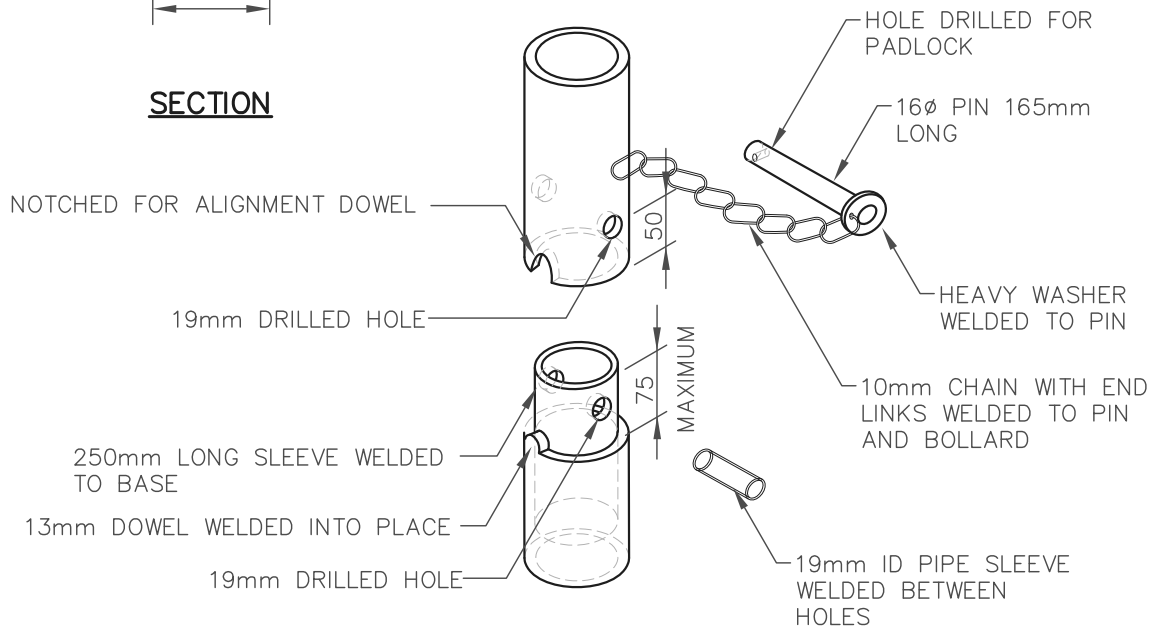


TRAIL ENTRANCE PLAN

SCALE	NTS	DRAWN BY	BMAIER	DRAWING NUMBER	F-10
DATE	APRIL 11, 2017				



SECTION



DETAIL

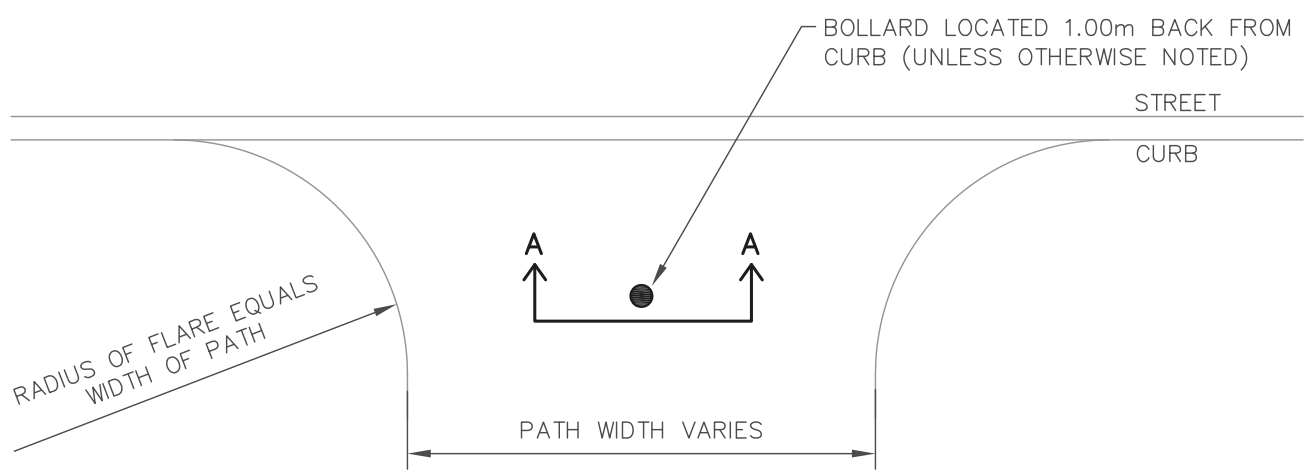
I	II/04/17
REVISION	DATE



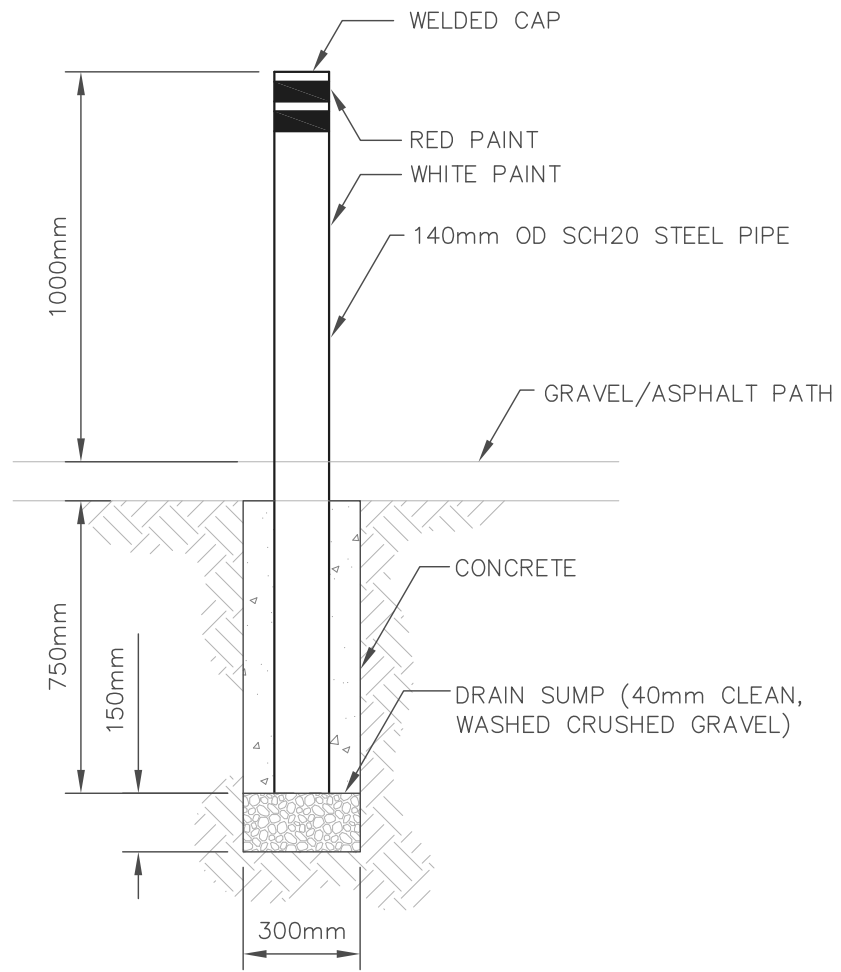
REMOVABLE BOLLARD DETAILS

SCALE	NTS	DRAWN BY	BMAIER
DATE	APRIL II, 2017		

DRAWING NUMBER **F-11**



PLAN

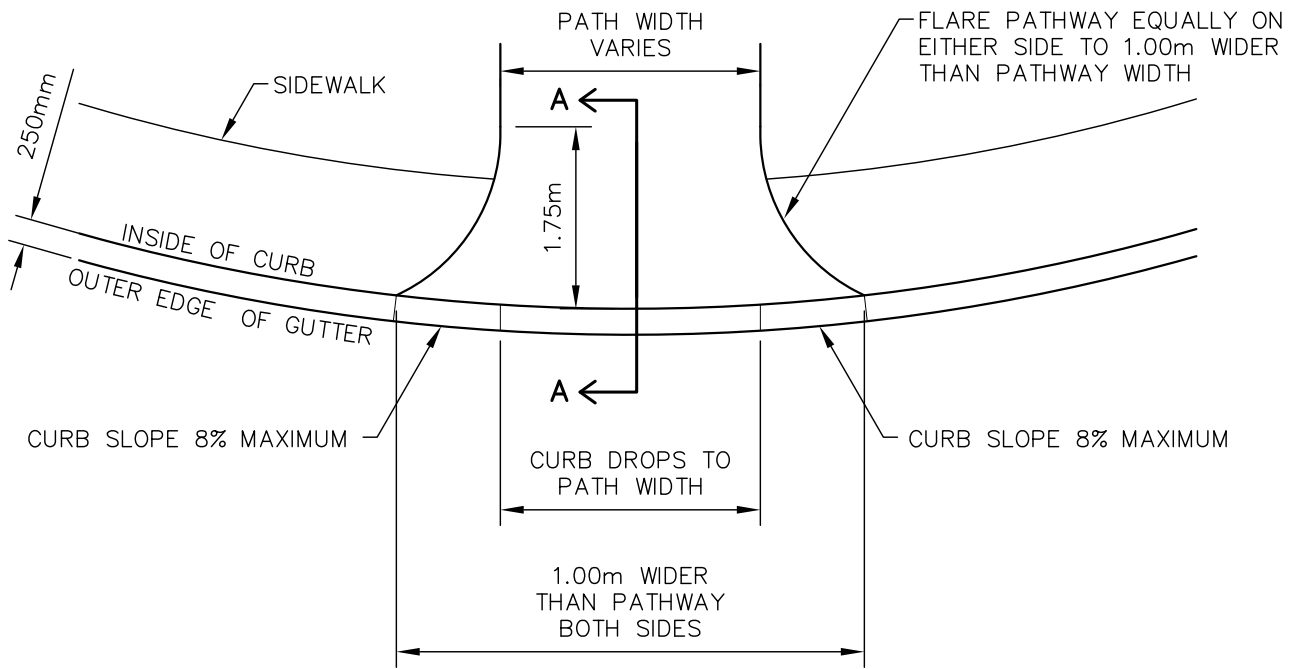


SECTION A-A

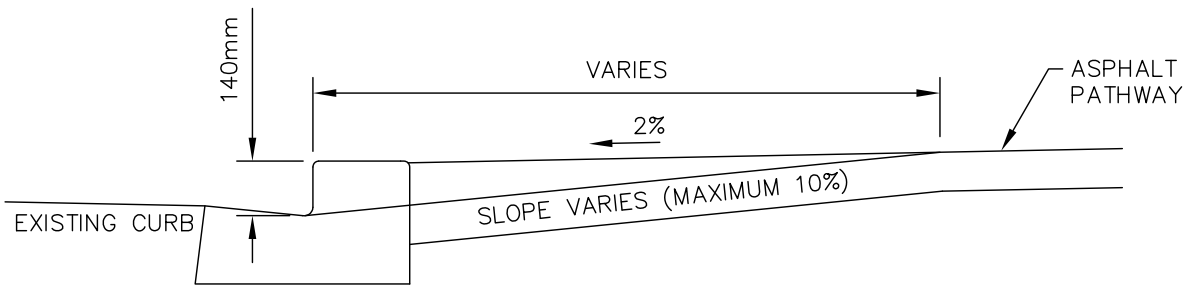
I	II/04/17
REVISION	DATE




PERMANENT BOLLARD DETAILS		
SCALE	DRAWN BY	DRAWING NUMBER
NTS	BMAIER	
DATE	APRIL II, 2017	F-12

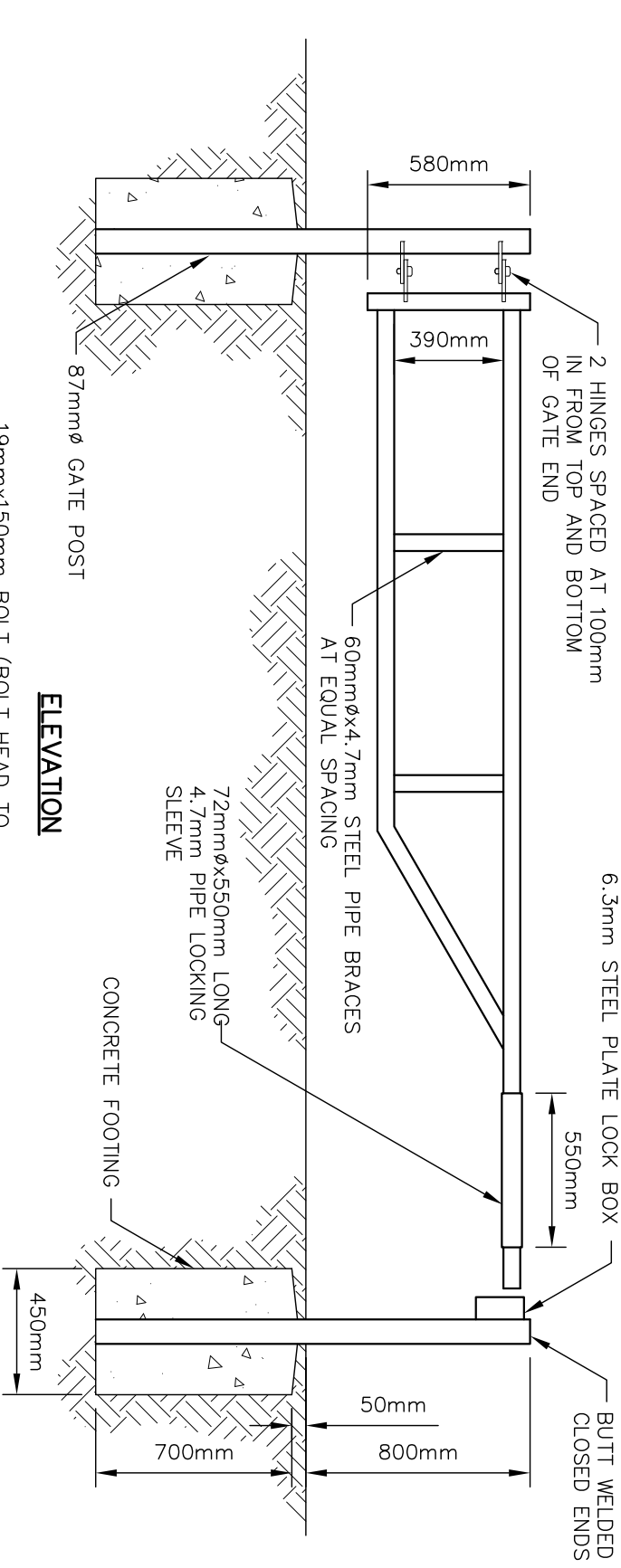


PLAN

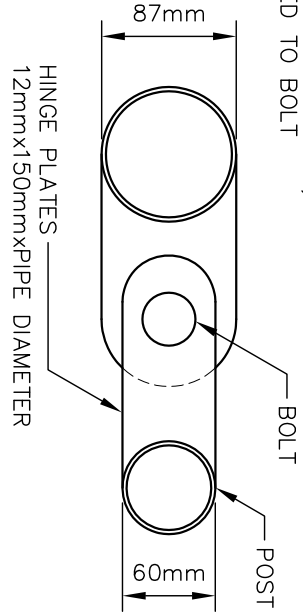
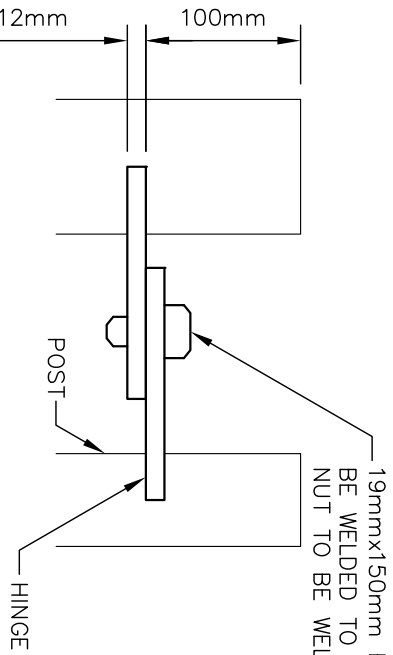


SECTION A-A

			<h2>ASPHALT WHEEL CHAIR RAMP</h2>	
I	11/04/17		SCALE NTS	DRAWN BY BMAIER
REVISION	DATE	DATE	APRIL 11, 2017	DRAWING NUMBER F-13



ELEVATION



HINGE DETAILS

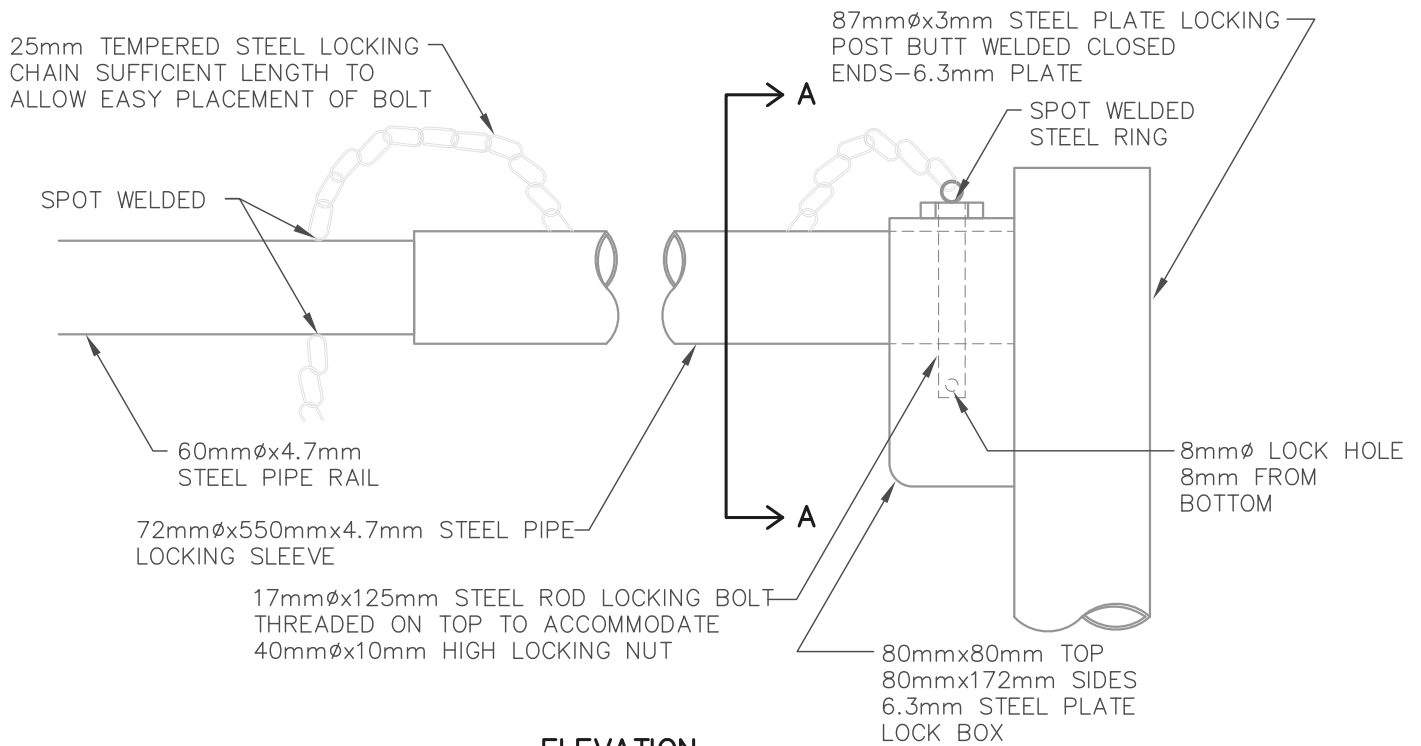
- NOTES:**
1. NO SINGLE GATE SPAN SHALL EXCEED 4.25m
 2. GATE FINISH TO BE RED ALKYD SEMI-GLOSS PAINT.
 3. ALL WELDS TO BE GROUND SMOOTH.
 4. PAINTING SHALL BE IN ACCORDANCE WITH C.P.C.A. (CANADIAN PAINTING CONTRACTORS ASSOCIATION)
 5. ALL DIMENSIONS ARE IN MILLIMETERS.

REVISION	DATE
1	11/04/17

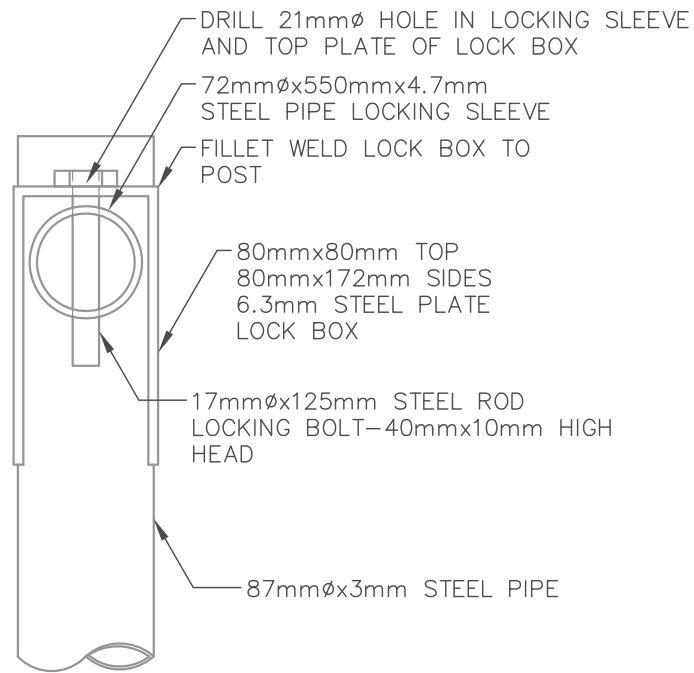
STEEL PIPE GATE

PROJECT NUMBER	
DRAWN BY	BMAIER
SCALE	NTS
DATE	APRIL 11, 2017
DRAWING NUMBER	F-14





ELEVATION



SECTION A-A

NOTES:

1. THE FINISH SHALL BE RED ALKYD SEMI-GLOSS PAINT.
2. ALL DIMENSIONS ARE IN MILLIMETERS

I	12/04/17
REVISION	DATE



STEEL PIPE GATE LOCKING SLEEVE DETAILS

SCALE NTS DRAWN BY BMAIER

DATE APRIL 12, 2017

DRAWING NUMBER **F-15**