

BYLAW NO. 1464/26

A BYLAW OF LACOMBE COUNTY, IN THE PROVINCE OF ALBERTA, TO DESIGNATE CERTAIN LANDS AS MUNICIPAL RESERVE, ENVIRONMENTAL RESERVE AND PUBLIC UTILITY LOT.

WHEREAS, Lacombe County has deemed it necessary to repeal Bylaw No. 1408/24 for the purpose of updating the legal descriptions of certain lands to be designated as municipal reserve, environmental reserve and public utility lot;

WHEREAS, notice was given of Council's intention to designate certain lands as municipal reserve, environmental reserve and public utility lot in the following local newspapers:

XX	TBD
XX	TBD
XX	TBD
XX	TBD
XX	TBD

AND WHEREAS, a public hearing was held on XXXXX, 2026 to allow the general public to comment on the proposed designation of certain lands as municipal reserve, environmental reserve and public utility lot lands;

NOW THEREFORE THE COUNCIL OF LACOMBE COUNTY UNDER THE AUTHORITY AND PURSUANT TO THE PROVISIONS OF THE *MUNICIPAL GOVERNMENT ACT*, RSA 2000, C.M-26-1, AS AMENDED, ENACTS AS FOLLOWS:

1. PARCELS TO BE DESIGNATED AS ENVIRONMENTAL RESERVE

The lands legally described as:

LOT R-ONE (R1) RESERVE
CONTAINING FIFTY NINE HUNDREDTHS (0.59) OF AN
ACRE, MORE OR LESS
ON PLAN 7720854
EXCEPTING THEREOUT ALL MINES AND MINERALS

PLAN 7720043
LOT R-ONE (R1) (RESERVE)
CONTAINING SEVEN AND FIFTY EIGHT HUNDREDTHS (7.58) ACRES MORE
OR LESS
EXCEPTING THEREOUT ALL MINES AND MINERALS

PLAN 1836NY
LOT R (PARK RESERVE)
CONTAINING 2.13 ACRES MORE OR LESS
EXCEPTING THEREOUT ALL MINES AND MINERALS

DESCRIPTIVE PLAN 2620199
BLOCK 1
LOT 1
EXCEPTING THEREOUT ALL MINES AND MINERALS
AREA: 1.49 HECTARES (3.68 ACRES) MORE OR LESS

DESCRIPTIVE PLAN 2620200
BLOCK 1
LOT 2
EXCEPTING THEREOUT ALL MINES AND MINERALS
AREA: 13.522 HECTARES (33.41 ACRES) MORE OR LESS

DESCRIPTIVE PLAN 2620203
BLOCK 1
LOT 1
EXCEPTING THEREOUT ALL MINES AND MINERALS
AREA: 23.66 HECTARES (58.47 ACRES) MORE OR LESS

DESCRIPTIVE PLAN 2620116
BLOCK 1
LOT 1
EXCEPTING THEREOUT ALL MINES AND MINERALS
AREA: 32.4 HECTARES (80.06 ACRES) MORE OR LESS

PLAN 7820427
LOT R-ONE (R-1) (RESERVE)
CONTAINING SIX AND THIRTEEN HUNDREDTHS (6.13)
ACRES, MORE OR LESS
EXCEPTING THEREOUT ALL MINES AND MINERALS

PLAN 7821729
LOT R-ONE (R-1) (RESERVE)
CONTAINING FOUR AND FIFTY HUNDREDTHS (4.50)
ACRES, MORE OR LESS
EXCEPTING THEREOUT ALL MINES AND MINERALS

PLAN 5034AX
BLOCKS A AND B
EXCEPTING THEREOUT ALL MINES AND MINERALS

DESCRIPTIVE PLAN 2620068
BLOCK 1
LOT 1
EXCEPTING THEREOUT ALL MINES AND MINERALS
AREA: 2.59 HECTARES (6.4 ACRES) MORE OR LESS

DESCRIPTIVE PLAN 2620069
BLOCK 1
LOT 2
EXCEPTING THEREOUT ALL MINES AND MINERALS
AREA: 1.43 HECTARES (3.53 ACRES) MORE OR LESS

PLAN 2335NY
LOT R2 (RESERVE) CONTAINING
0.35 OF AN ACRE MORE OR LESS
RESERVING THEREOUT ALL MINES AND MINERALS
AS SET FORTH IN TRANSFER 7291DR

PLAN 3575MC
BLOCK (B)
LOT (R) (PUBLIC RESERVE)
CONTAINING 0.615 HECTARES (1.52 ACRES)
MORE OR LESS
EXCEPTING THEREOUT ALL MINES AND MINERALS

PLAN 7822831
BLOCK ONE (1)
LOT R-NINE (R-9) (RESERVE)
CONTAINING 5.08 ACRES, MORE OR LESS
EXCEPTING THEREOUT ALL MINES AND MINERALS

PLAN 7822831
BLOCK ONE (1)
LOT R-TEN (R-10) (RESERVE)
CONTAINING 15.11 ACRES, MORE OR LESS
EXCEPTING THEREOUT ALL MINES AND MINERALS

PLAN 567TR
BLOCK 1
LOT R1 (RESERVE)
CONTAINING 10.88 ACRES MORE OR LESS
EXCEPTING THEREOUT:

	HECTARES	(ACRES)	MORE OR LESS
A) PLAN 2220542 - SUBDIVISION	0.099	0.24	

EXCEPTING THEREOUT ALL MINES AND MINERALS
AND THE RIGHT TO WORK THE SAME

PLAN 4238TR BLOCK A
LOT R1 (RESERVE)
CONTAINING 1.01 ACRES MORE OR LESS
EXCEPTING THEREOUT ALL MINES AND MINERALS

PLAN 914MC
BLOCK 1
LOT R (PUBLIC RESERVE)
EXCEPTING THEREOUT ALL MINES AND MINERALS

PLAN 1183MC
BLOCK 1
LOT R (PUBLIC RESERVE PARK)
EXCEPTING THEREOUT ALL MINES AND MINERALS

PLAN 5600MC
BLOCK (A)
LOT THIRTY TWO-R (32R) (COMMUNITY RESERVE) CONTAINING
THIRTEEN AND TWENTY TWO HUNDREDTHS (13.22) ACRES MORE
OR LESS
EXCEPTING THEREOUT ALL MINES AND MINERALS

PLAN 4239RS
BLOCK A
LOT R (RESERVE)
EXCEPTING THEREOUT ALL MINES AND MINERALS

PLAN 0924769
BLOCK 1
LOT 1
EXCEPTING THEREOUT ALL MINES AND MINERALS

DESCRIPTIVE PLAN 2020776
BLOCK 1
LOT 2
EXCEPTING THEREOUT ALL MINES AND MINERALS

PLAN 2222602
BLOCK 1
LOT 2
EXCEPTING THEREOUT ALL MINES AND MINERALS

DESCRIPTIVE PLAN 2322180
BLOCK 1
LOT 2
EXCEPTING THEREOUT ALL MINES AND MINERALS
AREA: 9.03 HECTARES (22.31 ACRES) MORE OR LESS

DESCRIPTIVE PLAN 2620206
BLOCK 1
LOT 2
EXCEPTING THEREOUT ALL MINES AND MINERALS
AREA: 0.57 HECTARES (1.41 ACRES) MORE OR LESS

DESCRIPTIVE PLAN 2620221
BLOCK 1
LOT 3
EXCEPTING THEREOUT ALL MINES AND MINERALS
AREA: 1.613 HECTARES (3.99 ACRES) MORE OR LESS

PLAN 2335NY
LOT R1 (RESERVE)
CONTAINING 1.117 HECTARES (2.76 ACRES) MORE OR LESS
EXCEPTING THEREOUT:
HECTARES (ACRES) MORE OR LESS
A) PLAN 2322171 SUBDIVISION 0.406 1.00
RESERVING THEREOUT ALL MINES AND MINERALS
AS SET FORTH IN TRANSFER 7291DR

PLAN 2521815
BLOCK 1
LOT 1
EXCEPTING THEREOUT ALL MINES AND MINERALS
AREA: 18.6 HECTARES (45.96 ACRES) MORE OR LESS

as outlined in the attached Schedule A hereto and forming part of this Bylaw
be designated as Environmental Reserve in accordance with the *Municipal Government Act*.

2. PARCELS TO BE DESIGNATED AS MUNICIPAL RESERVE

The lands legally described as:

PLAN 1620098
BLOCK 1
LOT 2
EXCEPTING THEREOUT ALL MINES AND MINERALS

PLAN 856MC
BLOCK 2
LOT R2 (COMMUNITY RESERVE)
CONTAINING 1.73 ACRES, MORE OR LESS
EXCEPTING THEREOUT ALL COAL, PETROLEUM AND VALUABLE STONE
AND THE RIGHT OT WORK THE SAME AND ALSO EXCEPTING THEREOUT
ALL OTHER MINES AND MINERALS

DESCRIPTIVE PLAN 2620220
BLOCK 1
LOT 1
EXCEPTING THEREOUT ALL MINES AND MINERALS
AREA: 9.11 HECTARES (22.51 ACRES) MORE OR LESS

PLAN 7702AY
BLOCK 1
EXCEPTING THEREOUT:

	HECTARES	(ACRES)	MORE OR LESS
A) PLAN 1220259 ROAD	0.125		0.31

EXCEPTING THEREOUT ALL MINES AND MINERALS

PLAN 5823BK
ALL OF BLOCK (R) (RESERVE)
EXCEPTING THEREOUT ALL MINES AND MINERALS

PLAN RN18 (XVIII)
BLOCK 3
LOT 11
EXCEPTING THEREOUT ALL MINES AND MINERALS
AND THE RIGHT TO WORK THE SAME

PLAN 6729NY
LOT (E) CONTAINING FIFTEEN AND SIXTEEN HUNDREDTHS
(15.16) ACRES MORE OR LESS
EXCEPTING THEREOUT: 0.29 ACRES OUT OF SE AND
0.49 ACRES OUT OF NE FOR ROAD ON PLAN 3744RS
EXCEPTING THEREOUT ALL MINES AND MINERALS

PLAN 5665MC
BLOCK FOUR (4)
LOT (R) (COMMUNITY RESERVE)
CONTAINING TWO AND SIXTY SEVEN HUNDREDTHS (2.67)
ACRES, MORE OR LESS
EXCEPTING THEREOUT ALL MINES AND MINERALS

PLAN 856MC
R3A (COMMUNITY RESERVE)
CONTAINING 0.18 OF AN ACRE, MORE OR LESS
EXCEPTING THEREOUT ALL COAL, PETROLEUM AND VALUABLE STONE
AND THE RIGHT TO WORK THE SAME AND ALSO EXCEPTING THEREOUT
ALL OTHER MINES AND MINERALS

PLAN 856MC
R5 (COMMUNITY RESERVE)
CONTAINING 1.83 ACRES, MORE OR LESS
EXCEPTING THEREOUT ALL COAL, PETROLEUM AND VALUABLE STONE
AND THE RIGHT TO WORK THE SAME AND ALSO EXCEPTING THEREOUT
ALL OTHER MINES AND MINERALS

PLAN 856MC
BLOCK 6
LOT R6 (COMMUNITY RESERVE)
CONTAINING 0.959 HECTARES (2.37 ACRES) MORE OR LESS
EXCEPTING THEREOUT :

	HECTARES	(ACRES)	MORE OR LESS
A) PLAN 1323742 - SUBDIVISION	0.026	0.064	

EXCEPTING THEREOUT ALL COAL, PETROLEUM AND VALUABLE
STONE AND THE RIGHT TO WORK THE SAME, AND ALSO EXCEPTING
THEREOUT ALL OTHER MINES AND MINERALS

PLAN 856MC
R4 (COMMUNITY RESERVE)
CONTAINING 2.22 ACRES, MORE OR LESS
EXCEPTING THEREOUT ALL COAL, PETROLEUM AND VALUABLE STONE
AND THE RIGHT TO WORK THE SAME AND ALSO EXCEPTING THEREOUT
ALL OTHER MINES AND MINERALS

PLAN 856MC
LOT R3 (COMMUNITY RESERVE)
CONTAINING 0.841 HECTARES, MORE OR LESS
EXCEPTING THEREOUT ALL MINES AND MINERALS
AND THE RIGHT TO WORK THE SAME

PLAN 7520233
BLOCK ONE (1)
LOT RONE (R-1) (RESERVE) CONTAINING ONE AND
FORTY FOUR HUNDREDTHS (1.44) ACRES MORE OR LESS
EXCEPTING THEREOUT ALL MINES AND MINERALS

PLAN 1970EO
LOT P (PUBLIC PARK) (RESERVE)
EXCEPTING THEREOUT ALL MINES AND MINERALS

PLAN 7822831
BLOCK TWO (2)
LOT R-FIVE (R-5) (RESERVE)
EXCEPTING THEREOUT ALL MINES AND MINERALS

PLAN 3737KS
BLOCK P1 (PARK RESERVE) CONTAINING 0.50
OF AN ACRE MORE OR LESS
RESERVING THEREOUT ALL COAL AND PETROLEUM AND ALSO
RESERVING THEREOUT ALL OTHER MINES AND MINERALS

PLAN 3737KS
BLOCK P2 (PARK RESERVE) CONTAINING 0.50 OF AN
ACRE MORE OR LESS
RESERVING THEREOUT ALL COAL AND PETROLEUM AND ALSO
RESERVING THEREOUT ALL OTHER MINES AND MINERALS

PLAN 1628CL
LOT R
(RESERVE)
EXCEPTING THEREOUT ALL MINES AND MINERALS

FIRST
PLAN 1483MC
BLOCK 2
LOT 1R (COMMUNITY RESERVE)
EXCEPTING THEREOUT ALL MINES AND MINERALS

SECOND
PLAN 1483MC
BLOCK 2
LOT 8R (COMMUNITY RESERVE)
EXCEPTING THEREOUT ALL MINES AND MINERALS

THIRD
PLAN 1483MC
BLOCK 2
LOT 18R (COMMUNITY RESERVE)
EXCEPTING THEREOUT ALL MINES AND MINERALS

PLAN 7722679
BLOCK ONE (1)
LOT FIFTY FIVE-R (55-R) (RESERVE)
EXCEPTING THEREOUT ALL MINES AND MINERALS

PLAN 7722679
BLOCK ONE (1)
LOT SIXTY FIVE-R (65-R) (RESERVE)
EXCEPTING THEREOUT ALL MINES AND MINERALS

PLAN 7521105
LOT R-THIRTEEN (R-13) (RESERVE)
CONTAINING SIXTEEN AND TWO HUNDREDTHS (16.02) MORE OR LESS
EXCEPTING THEREOUT:

	HECTARES (ACRES) MORE OR LESS	
A) PLAN 0426722 ROAD	0.144	0.36

EXCEPTING THEREOUT ALL MINES AND MINERALS

PLAN 1723277
BLOCK 2
LOT 2
EXCEPTING THEREOUT ALL MINES AND MINERALS

DESCRIPTIVE PLAN 0620731
BLOCK 1
LOT 4
CONTAINING 86.54 HECTARES (213.85 ACRES) MORE OR LESS
EXCEPTING THEREOUT:

	HECTARES (ACRES) MORE OR LESS	
A) PLAN 0828518 ROAD	5.07	12.53
B) PLAN 1321488 ROAD	0.217	0.54
C) PLAN 1321490 ROAD	0.639	1.58
D) PLAN 1520048 ROAD	24.93	61.60

EXCEPTING THEREOUT ALL MINES AND MINERALS

as outlined on the attached Schedule B hereto and forming part of this Bylaw
be designated as Municipal Reserve in accordance with the *Municipal Government Act*.

3. PARCELS TO BE DESIGNATED AS PUBLIC UTILITY LOT

The lands legally described as:

PLAN 2220542
BLOCK 1
LOT 1
EXCEPTING THEREOUT ALL MINES AND MINERALS

PLAN 2322171
BLOCK 1
LOT 3MR (MUNICIPAL RESERVE)
EXCEPTING THEREOUT ALL MINES AND MINERALS
AREA: 0.406 HECTARES (1 ACRES) MORE OR LESS

as outlined on the attached Schedule C hereto and forming part of this Bylaw
be designated as Public Utility Lot in accordance with the *Municipal Government Act*.

4. Lacombe County Bylaw 1408/24 is hereby repealed.

This Bylaw shall come into effect upon final passage thereof.

INTRODUCED AND GIVEN FIRST READING this XX day of XX, 2026

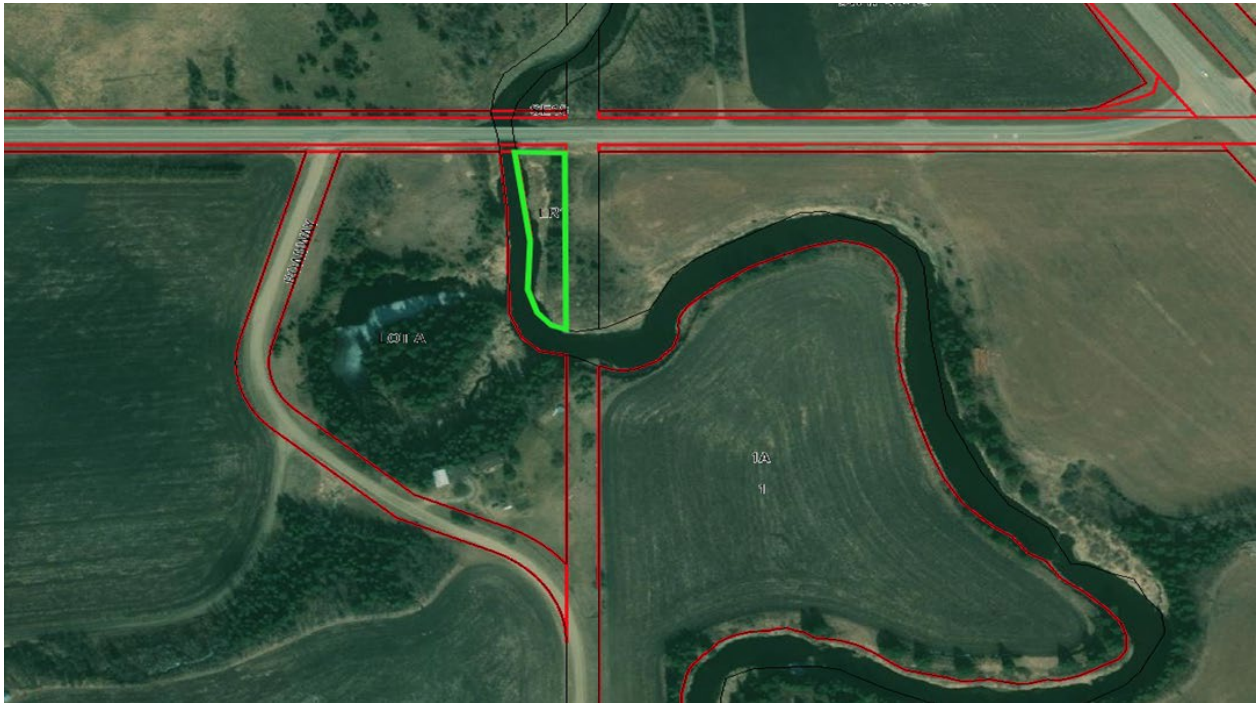
GIVEN SECOND READING this XX day of XX, 2026

GIVEN THIRD AND FINAL READING this XX day of XX, 2026

John Ireland
Reeve

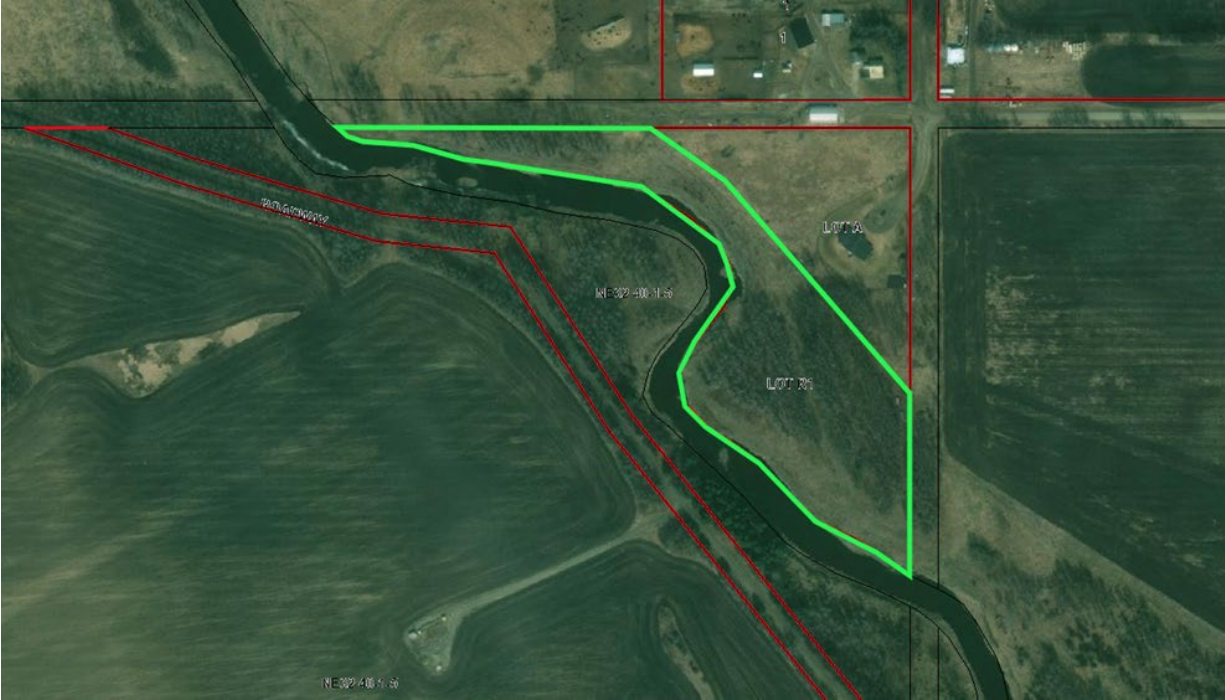
Tim Timmons
County Manager

SCHEDULE A: ENVIRONMENTAL RESERVE DESIGNATIONS



LOT R-ONE (R1) RESERVE
CONTAINING FIFTY NINE HUNDREDTHS (0.59) OF AN
ACRE, MORE OR LESS
ON PLAN 7720854
EXCEPTING THEREOUT ALL MINES AND MINERALS

Designation change from Reserve
(R) to Environmental Reserve (ER)
Change lot designation to Lot 1ER



PLAN 7720043
LOT R-ONE (R1) (RESERVE)
CONTAINING SEVEN AND FIFTY EIGHT HUNDREDTHS (7.58) ACRES MORE
OR LESS
EXCEPTING THEREOUT ALL MINES AND MINERALS

Designation change from Reserve
(R) to Environmental Reserve (ER)
Change lot designation to Lot 1ER



PLAN 1836NY
LOT R (PARK RESERVE)
CONTAINING 2.13 ACRES MORE OR LESS
EXCEPTING THEREOUT ALL MINES AND MINERALS

Designation change from Park Reserve (R) to
Environmental Reserve (ER)
Change lot designation to Lot 1ER



DESCRIPTIVE PLAN 2620199
BLOCK 1
LOT 1
EXCEPTING THEREOUT ALL MINES AND MINERALS
AREA: 1.49 HECTARES (3.68 ACRES) MORE OR LESS

Designate as Environmental Reserve (ER)
Change lot designation to Lot 1ER



DESCRIPTIVE PLAN 2620200
BLOCK 1
LOT 2
EXCEPTING THEREOUT ALL MINES AND MINERALS
AREA: 13.522 HECTARES (33.41 ACRES) MORE OR LESS

Designate as Environmental Reserve (ER)
Change lot designation to Lot 2ER



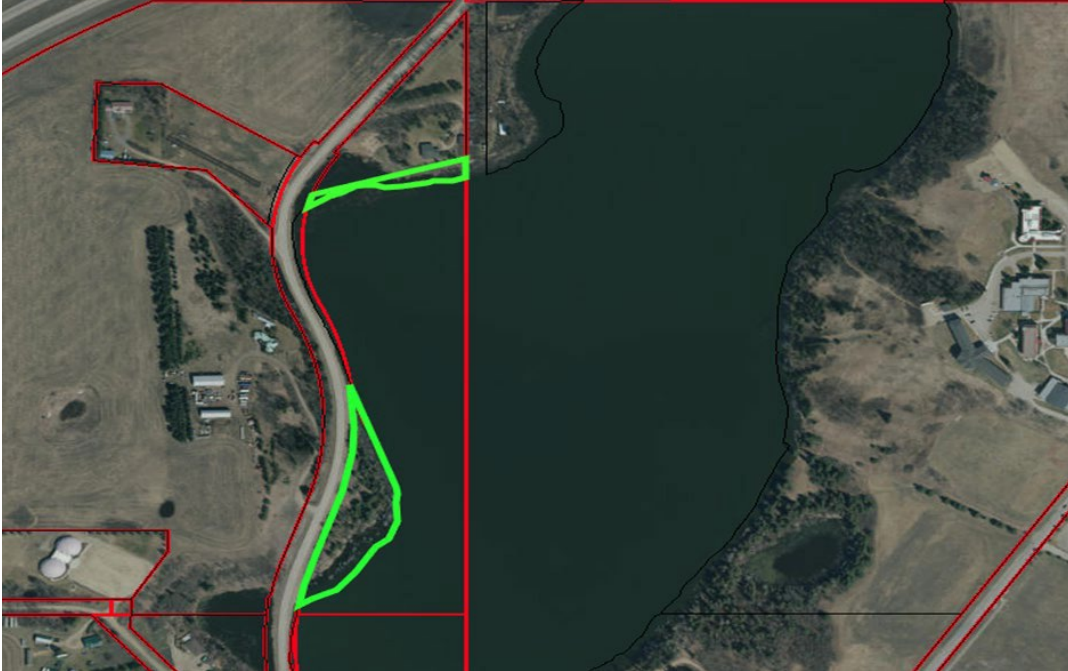
DESCRIPTIVE PLAN 2620203
BLOCK 1
LOT 1
EXCEPTING THEREOUT ALL MINES AND MINERALS
AREA: 23.66 HECTARES (58.47 ACRES) MORE OR LESS

Designate as Environmental Reserve (ER)
Change lot designation to Lot 1ER



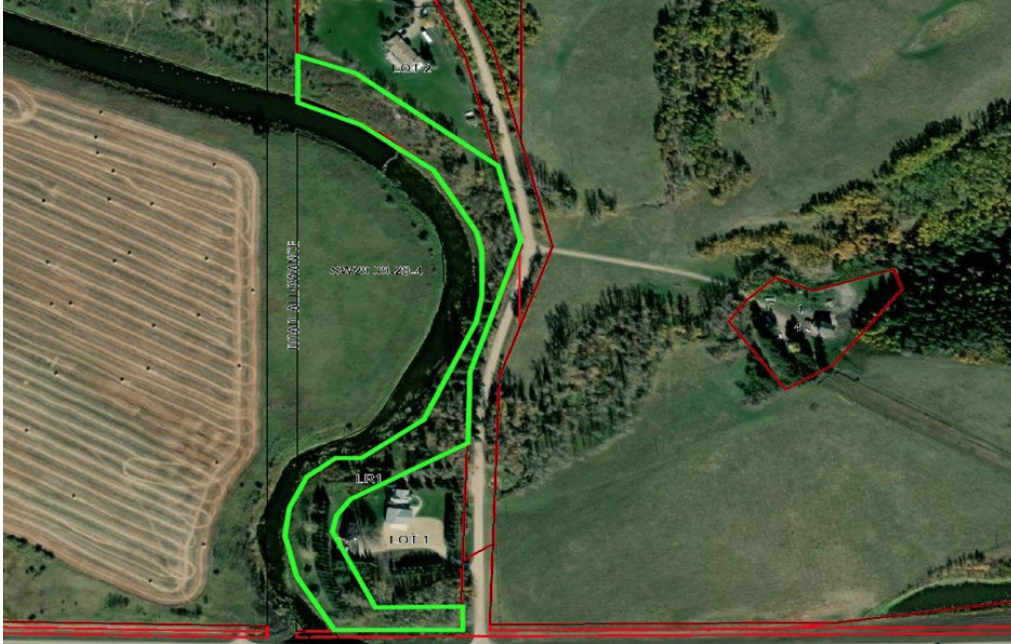
DESCRIPTIVE PLAN 2620116
BLOCK 1
LOT 1
EXCEPTING THEREOUT ALL MINES AND MINERALS
AREA: 32.4 HECTARES (80.06 ACRES) MORE OR LESS

Designate as Environmental Reserve (ER)
Change lot designation to Lot 1ER



PLAN 7820427
LOT R-ONE (R-1) (RESERVE)
CONTAINING SIX AND THIRTEEN HUNDREDTHS (6.13)
ACRES , MORE OR LESS
EXCEPTING THEREOUT ALL MINES AND MINERALS

Designation change from Reserve
(R) to Environmental Reserve (ER)
Change lot designation to Lot 1ER



PLAN 7821729
LOT R-ONE (R-1) (RESERVE)
CONTAINING FOUR AND FIFTY HUNDREDTHS (4.50)
ACRES, MORE OR LESS
EXCEPTING THEREOUT ALL MINES AND MINERALS

Designation change from Reserve
(R) to Environmental Reserve (ER)
Change lot designation to Lot 3ER



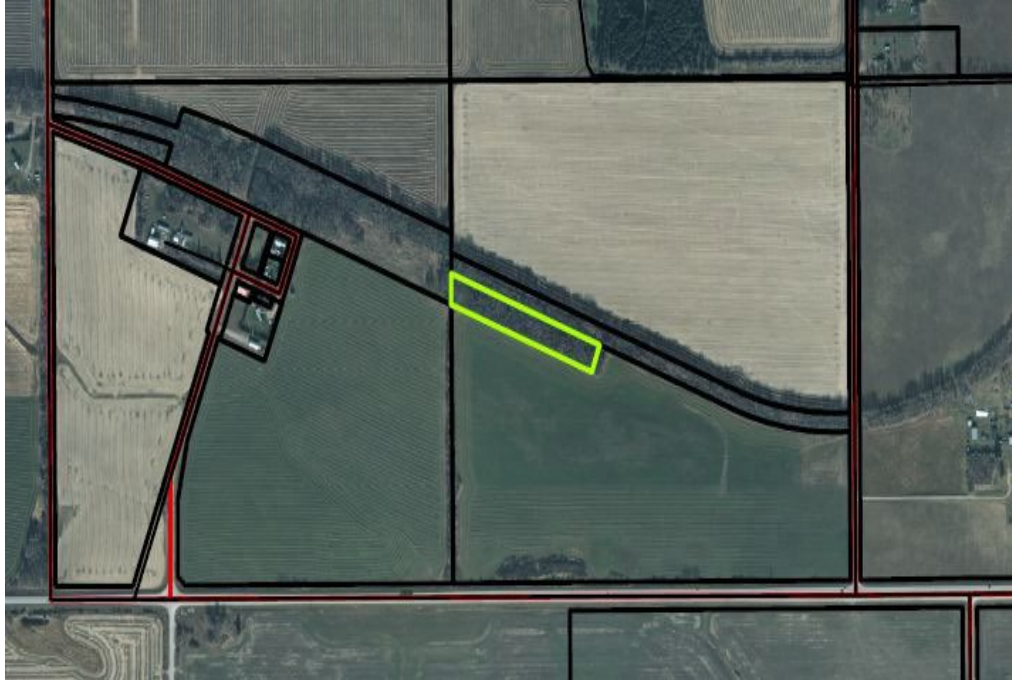
PLAN 5034AX
BLOCKS A AND B
EXCEPTING THEREOUT ALL MINES AND MINERALS

Designate as Environmental Reserve (ER)
Change Blocks A and B designation to Lot 1ER



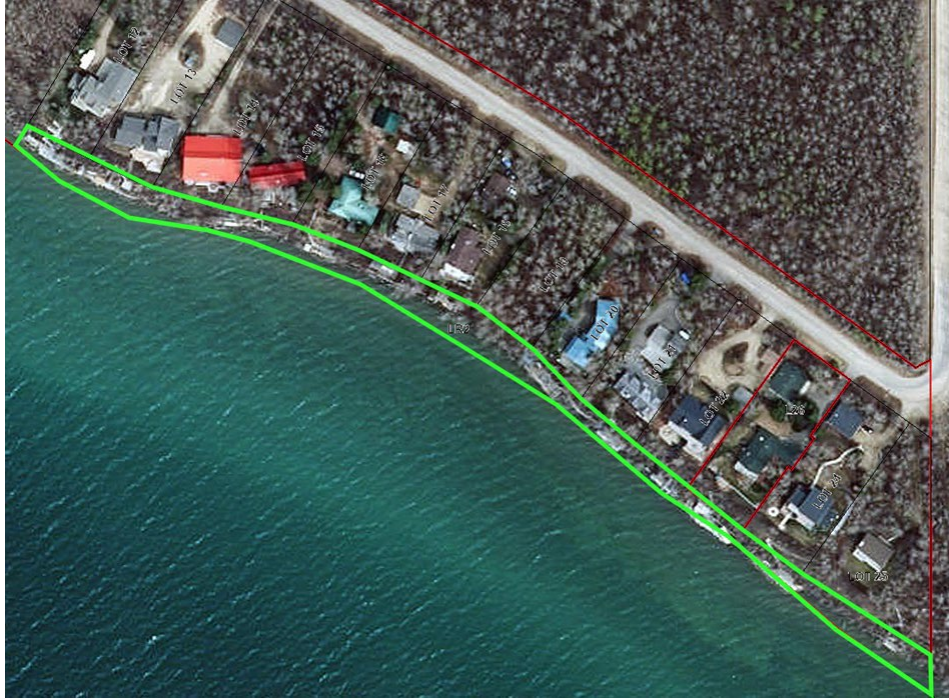
DESCRIPTIVE PLAN 2620068
BLOCK 1
LOT 1
EXCEPTING THEREOUT ALL MINES AND MINERALS
AREA: 2.59 HECTARES (6.4 ACRES) MORE OR LESS

Designate as Environmental Reserve (ER)
Change lot designation to Lot 1ER



DESCRIPTIVE PLAN 2620069
BLOCK 1
LOT 2
EXCEPTING THEREOUT ALL MINES AND MINERALS
AREA: 1.43 HECTARES (3.53 ACRES) MORE OR LESS

Designate as Environmental Reserve (ER)
Change lot designation to Lot 2ER



PLAN 2335NY
LOT R2 (RESERVE) CONTAINING
0.35 OF AN ACRE MORE OR LESS
RESERVING THEREOUT ALL MINES AND MINERALS
AS SET FORTH IN TRANSFER 7291DR

Designation change from Reserve
(R) to Environmental Reserve (ER)
Change lot designation to Lot 2ER



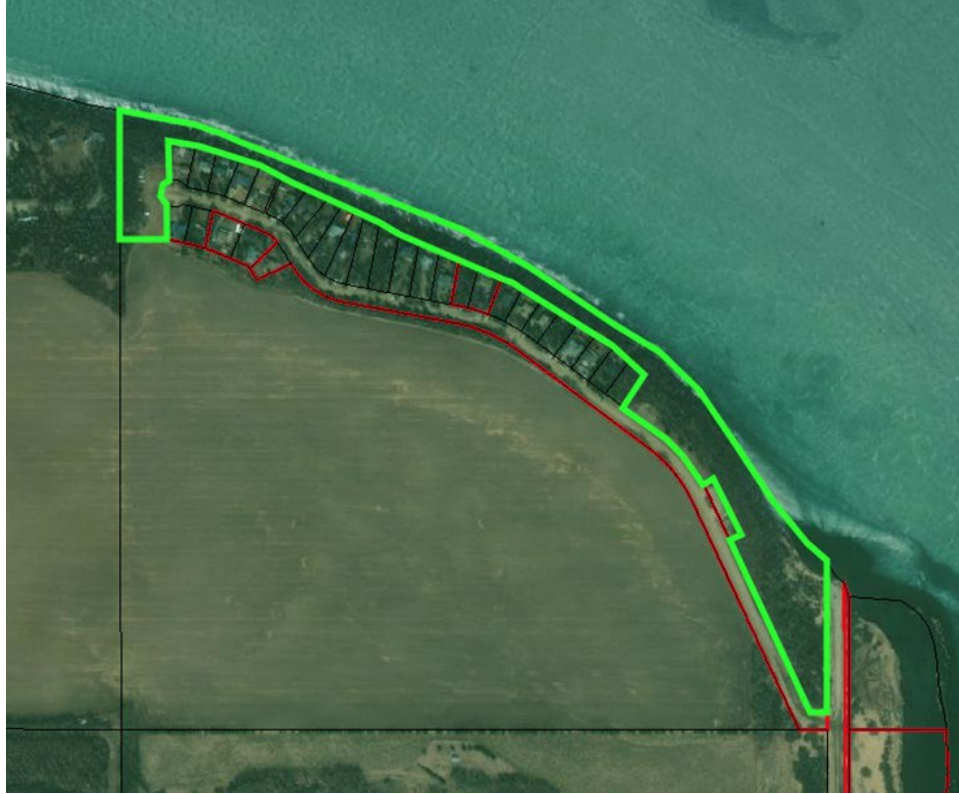
PLAN 3575MC
BLOCK (B)
LOT (R) (PUBLIC RESERVE)
CONTAINING 0.615 HECTARES (1.52 ACRES)
MORE OR LESS
EXCEPTING THEREOUT ALL MINES AND MINERALS

Designation change from Public Reserve (R) to
Environmental Reserve (ER)
Change lot designation to Lot 14ER



PLAN 7822831
BLOCK ONE (1)
LOT R-NINE (R-9) (RESERVE)
CONTAINING 5.08 ACRES, MORE OR LESS
EXCEPTING THEREOUT ALL MINES AND MINERALS

Designation change from Reserve
(R) to Environmental Reserve (ER)
Change lot designation to Lot 9ER



PLAN 567TR
BLOCK 1
LOT R1 (RESERVE)
CONTAINING 10.88 ACRES MORE OR LESS
EXCEPTING THEREOUT:
HECTARES (ACRES) MORE OR LESS
A) PLAN 2220542 - SUBDIVISION 0.099 0.24
EXCEPTING THEREOUT ALL MINES AND MINERALS
AND THE RIGHT TO WORK THE SAME

Designation change from Reserve
(R) to Environmental Reserve (ER)
Change lot designation to Lot 34ER



PLAN 4238TR
BLOCK A
LOT R1 (RESERVE)
CONTAINING 1.01 ACRES MORE OR LESS
EXCEPTING THEREOUT ALL MINES AND MINERALS

Designation change from Reserve
(R) to Environmental Reserve (ER)
Change lot designation to Lot 5ER



PLAN 914MC
BLOCK 1
LOT R (PUBLIC RESERVE)
EXCEPTING THEREOUT ALL MINES AND MINERALS

Designation change from Public Reserve (R) to
Environmental Reserve (ER)
Change lot designation to Lot 7ER



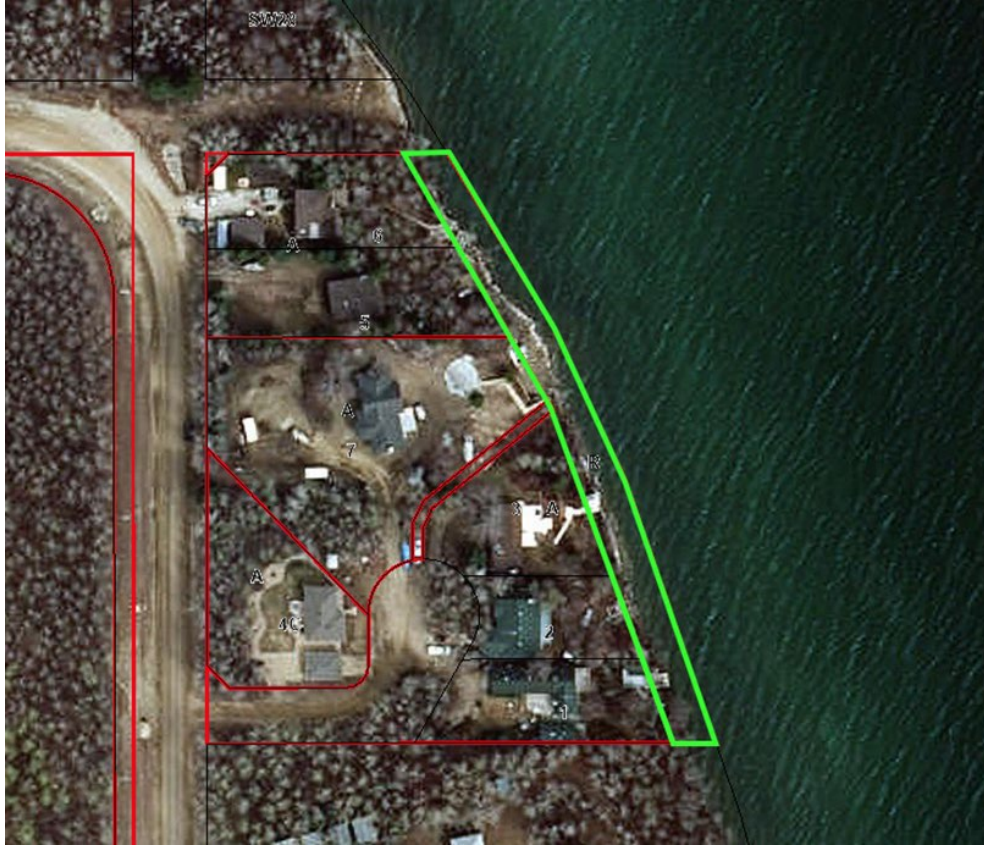
PLAN 1183MC
BLOCK 1
LOT R (PUBLIC RESERVE PARK)
EXCEPTING THEREOUT ALL MINES AND MINERALS

Designation change from Public Reserve Park (R)
to Environmental Reserve (ER)
Change lot designation to Lot 8ER



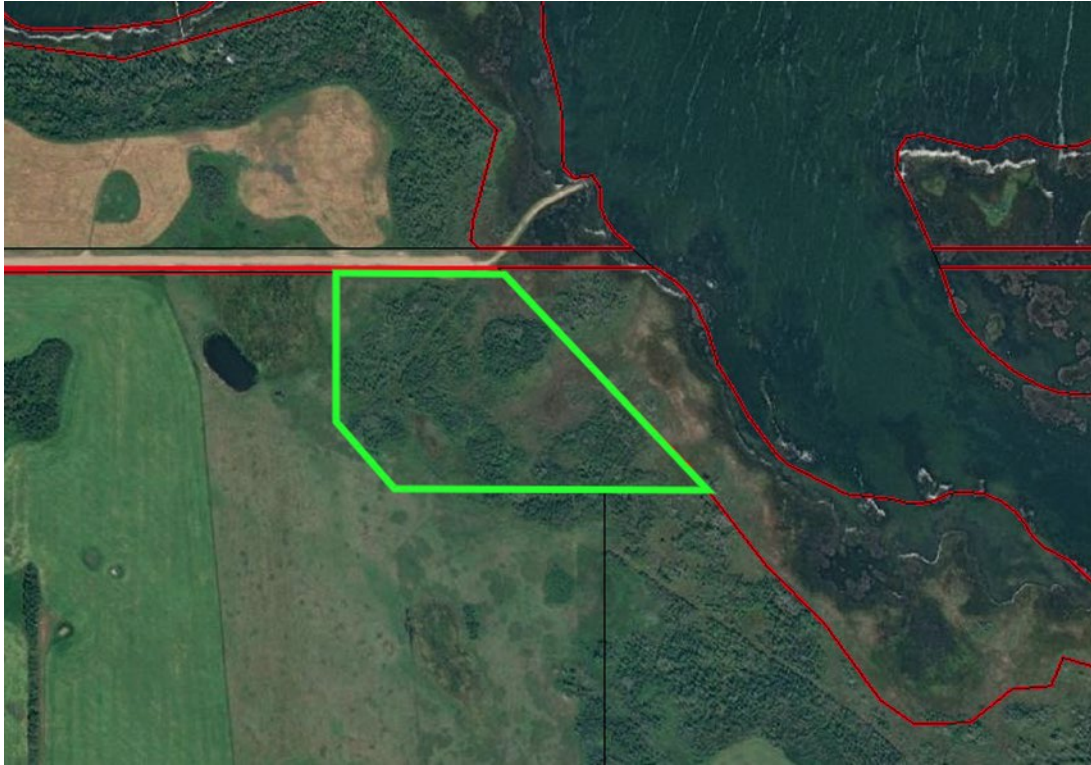
PLAN 5600MC
BLOCK (A)
LOT THIRTY TWO-R (32R) (COMMUNITY RESERVE) CONTAINING
THIRTEEN AND TWENTY TWO HUNDREDTHS (13.22) ACRES MORE
OR LESS
EXCEPTING THEREOUT ALL MINES AND MINERALS

Designation change from Community Reserve
(R) to Environmental Reserve (ER)
Change lot designation to Lot 32ER



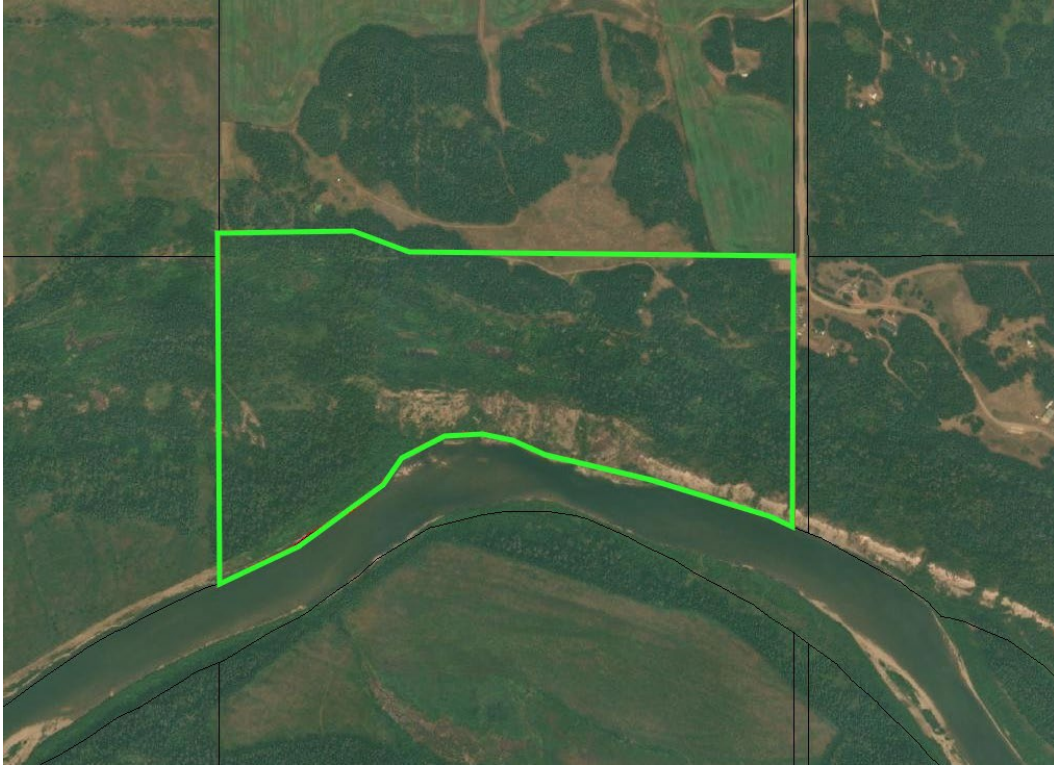
PLAN 4239RS
BLOCK A
LOT R (RESERVE)
EXCEPTING THEREOUT ALL MINES AND MINERALS

Designation change from Reserve
(R) to Environmental Reserve (ER)
Change lot designation to Lot 8ER



PLAN 0924769
BLOCK 1
LOT 1
EXCEPTING THEREOUT ALL MINES AND MINERALS

Designate as Environmental Reserve (ER)
Change lot designation to Lot 1ER



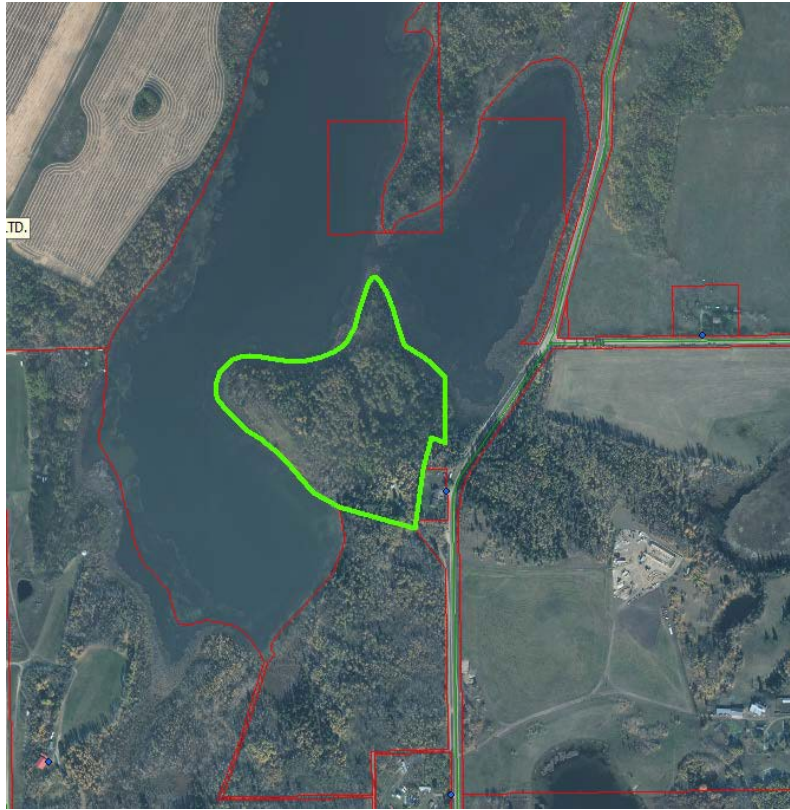
DESCRIPTIVE PLAN 2020776
BLOCK 1
LOT 2
EXCEPTING THEREOUT ALL MINES AND MINERALS

Designate as Environmental Reserve (ER)
Change lot designation to Lot 2ER



PLAN 2222602
BLOCK 1
LOT 2
EXCEPTING THEREOUT ALL MINES AND MINERALS

Designate as Environmental Reserve (ER)
Change lot designation to Lot 2ER



DESCRIPTIVE PLAN 2322180
BLOCK 1
LOT 2
EXCEPTING THEREOUT ALL MINES AND MINERALS
AREA: 9.03 HECTARES (22.31 ACRES) MORE OR LESS

Designate as Environmental Reserve (ER)
Change lot designation to Lot 2ER



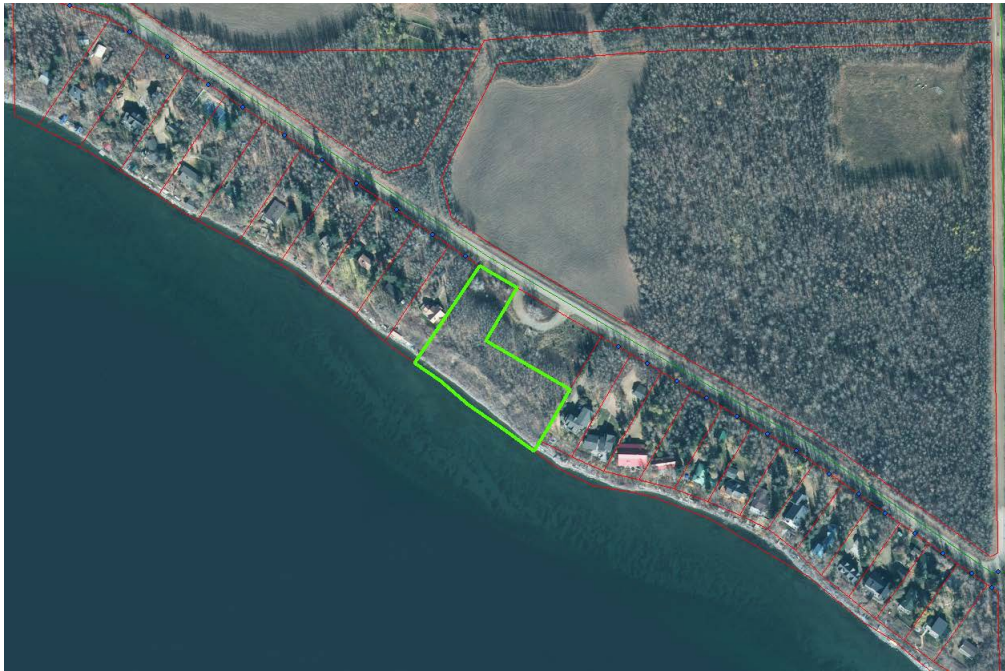
DESCRIPTIVE PLAN 2620206
BLOCK 1
LOT 2
EXCEPTING THEREOUT ALL MINES AND MINERALS
AREA: 0.57 HECTARES (1.41 ACRES) MORE OR LESS

Designate as Environmental Reserve (ER)
Change lot designation to Lot 2ER



DESCRIPTIVE PLAN 2620221
BLOCK 1
LOT 3
EXCEPTING THEREOUT ALL MINES AND MINERALS
AREA: 1.613 HECTARES (3.99 ACRES) MORE OR LESS

Designate as Environmental Reserve (ER)
Change lot designation to Lot 3ER



PLAN 2335NY
LOT R1 (RESERVE)
CONTAINING 1.117 HECTARES (2.76 ACRES) MORE OR LESS
EXCEPTING THEREOUT:

		HECTARES	(ACRES)	MORE OR LESS
A) PLAN 2322171	SUBDIVISION	0.406	1.00	

RESERVING THEREOUT ALL MINES AND MINERALS
AS SET FORTH IN TRANSFER 7291DR

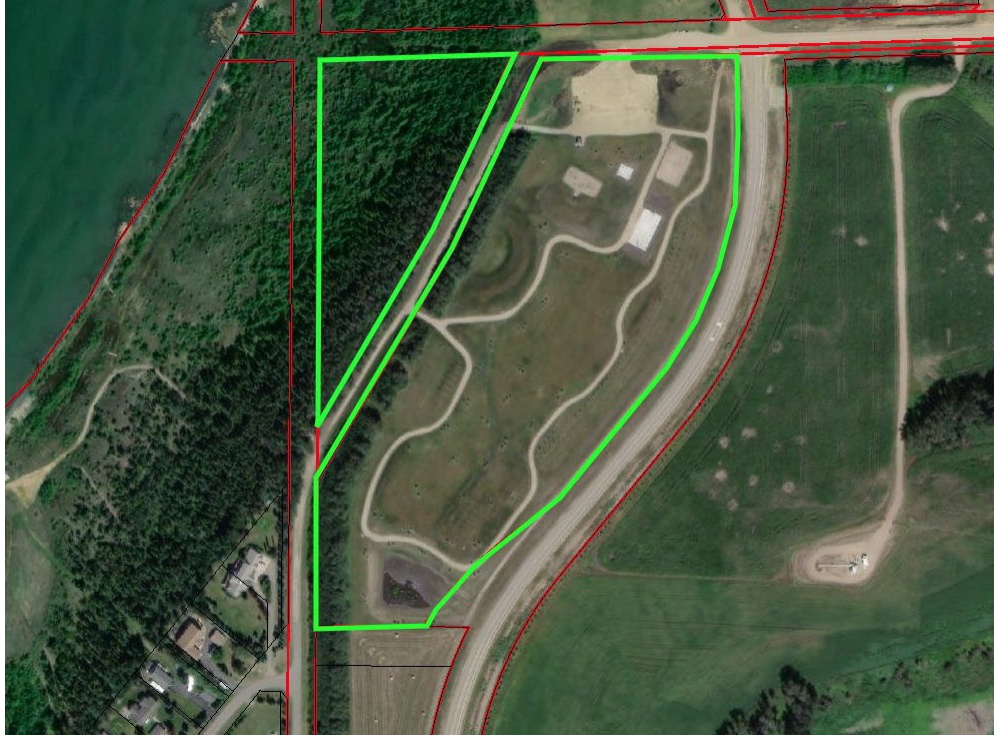
Designation change from Reserve (R)
to Environmental Reserve (ER)
Change lot designation to Lot 1ER



PLAN 2521815
BLOCK 1
LOT 1
EXCEPTING THEREOUT ALL MINES AND MINERALS
AREA: 18.6 HECTARES (45.96 ACRES) MORE OR LESS

Designate as Environmental Reserve (ER)
Change lot designation to Lot 1ER

SCHEDULE B: MUNICIPAL RESERVE DESIGNATIONS



PLAN 1620098
BLOCK 1
LOT 2
EXCEPTING THEREOUT ALL MINES AND MINERALS

Designate as Municipal Reserve (MR)
Change lot designation to Lot 2MR



PLAN 856MC
BLOCK 2
LOT R2 (COMMUNITY RESERVE)
CONTAINING 1.73 ACRES, MORE OR LESS
EXCEPTING THEREOUT ALL COAL, PETROLEUM AND VALUABLE STONE
AND THE RIGHT OT WORK THE SAME AND ALSO EXCEPTING THEREOUT
ALL OTHER MINES AND MINERALS

Designation change from Community Reserve
(R) to Municipal Reserve (MR)
Change lot designation to Lot 24MR



DESCRIPTIVE PLAN 2620220
BLOCK 1
LOT 1
EXCEPTING THEREOUT ALL MINES AND MINERALS
AREA: 9.11 HECTARES (22.51 ACRES) MORE OR LESS

Designate as Municipal Reserve (MR)
Change lot designation to Lot 1MR



PLAN 7702AY
 BLOCK 1
 EXCEPTING THEREOUT:

	HECTARES (ACRES) MORE OR LESS	
A) PLAN 1220259 ROAD	0.125	0.31
EXCEPTING THEREOUT ALL MINES AND MINERALS		
	Designate as Municipal Reserve (MR)	
	Add lot designation of Lot 1MR	



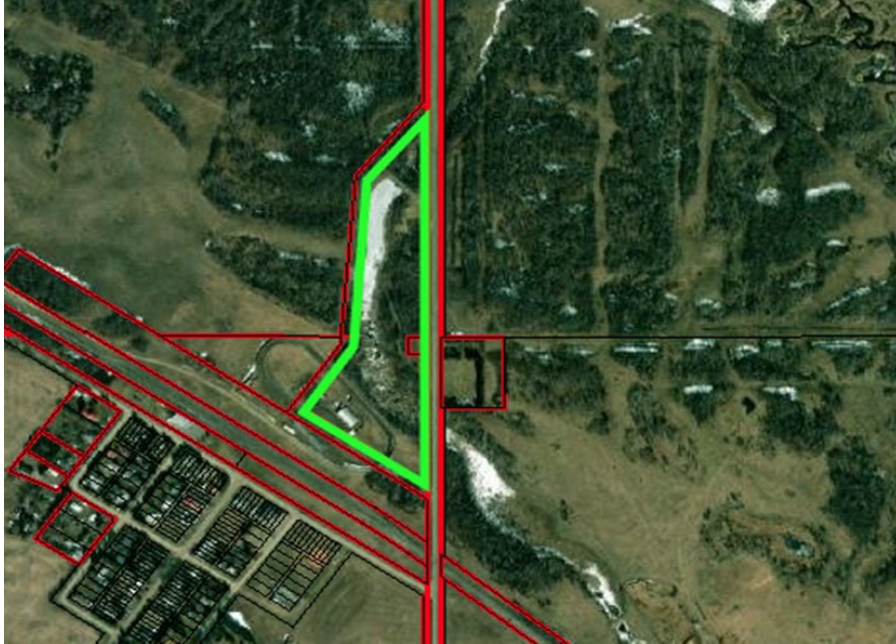
PLAN 5823BK
ALL OF BLOCK (R) (RESERVE)
EXCEPTING THEREOUT ALL MINES AND MINERALS

Designation change from Reserve
(R) to Municipal Reserve (MR)
Change lot designation to Lot 1MR



PLAN RN18 (XVIII)
BLOCK 3
LOT 11
EXCEPTING THEREOUT ALL MINES AND MINERALS
AND THE RIGHT TO WORK THE SAME

Designate as Municipal Reserve (MR)
Change lot designation to Lot 11MR



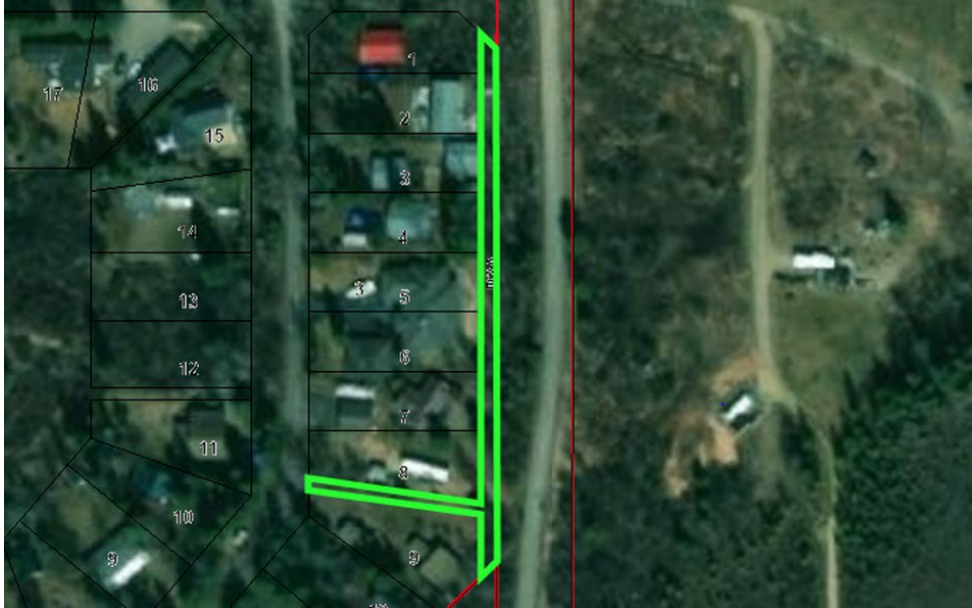
PLAN 6729NY
LOT (E) CONTAINING FIFTEEN AND SIXTEEN HUNDREDTHS
(15.16) ACRES MORE OR LESS
EXCEPTING THEREOUT: 0.29 ACRES OUT OF SE AND
0.49 ACRES OUT OF NE FOR ROAD ON PLAN 3744RS
EXCEPTING THEREOUT ALL MINES AND MINERALS

Designate as Municipal Reserve (MR)
Change lot designation to Lot 2MR



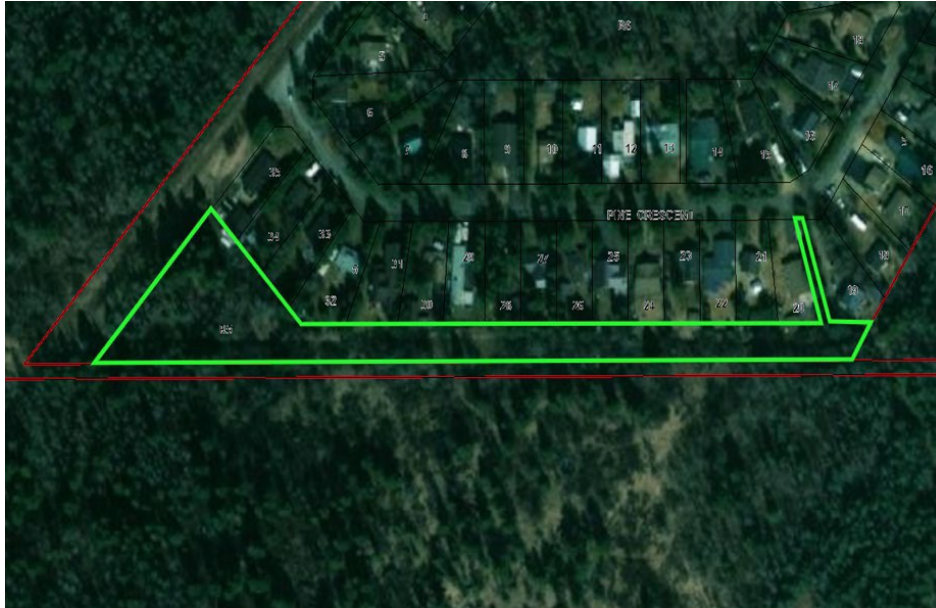
PLAN 5665MC
BLOCK FOUR (4)
LOT (R) (COMMUNITY RESERVE)
CONTAINING TWO AND SIXTY SEVEN HUNDREDTHS (2.67)
ACRES, MORE OR LESS
EXCEPTING THEREOUT ALL MINES AND MINERALS

Designation change from Community Reserve
(R) to Municipal Reserve (MR)
Change lot designation to Lot 9MR



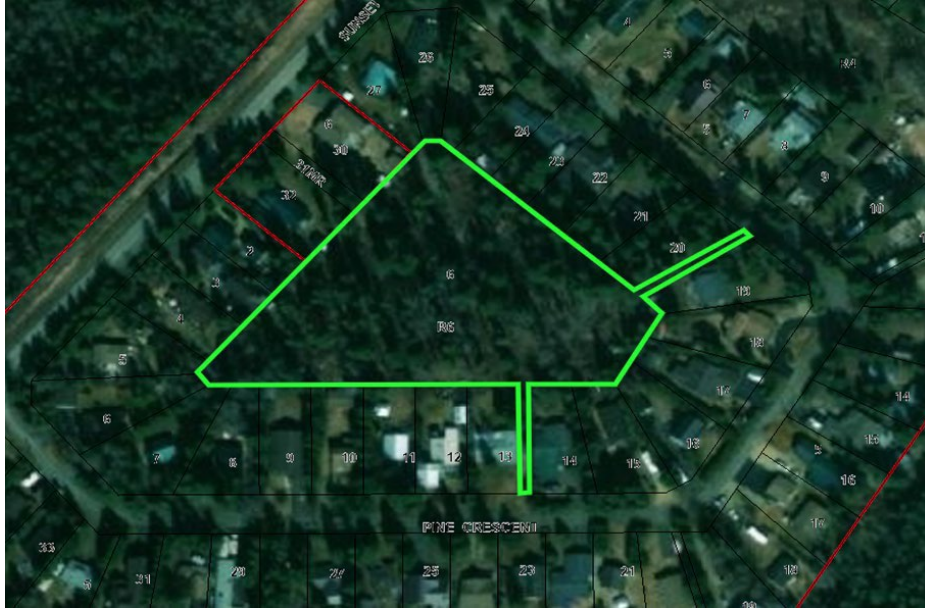
PLAN 856MC
R3A (COMMUNITY RESERVE)
CONTAINING 0.18 OF AN ACRE, MORE OR LESS
EXCEPTING THEREOUT ALL COAL, PETROLEUM AND VALUABLE STONE
AND THE RIGHT TO WORK THE SAME AND ALSO EXCEPTING THEREOUT
ALL OTHER MINES AND MINERALS

Designation change from Community Reserve
(R) to Municipal Reserve (MR)
Change lot designation to Lot 30MR, Block 3



PLAN 856MC
R5 (COMMUNITY RESERVE)
CONTAINING 1.83 ACRES, MORE OR LESS
EXCEPTING THEREOUT ALL COAL, PETROLEUM AND VALUABLE STONE
AND THE RIGHT TO WORK THE SAME AND ALSO EXCEPTING THEREOUT
ALL OTHER MINES AND MINERALS

Designation change from Community Reserve
(R) to Municipal Reserve (MR)
Change lot designation to Lot 37MR, Block 5

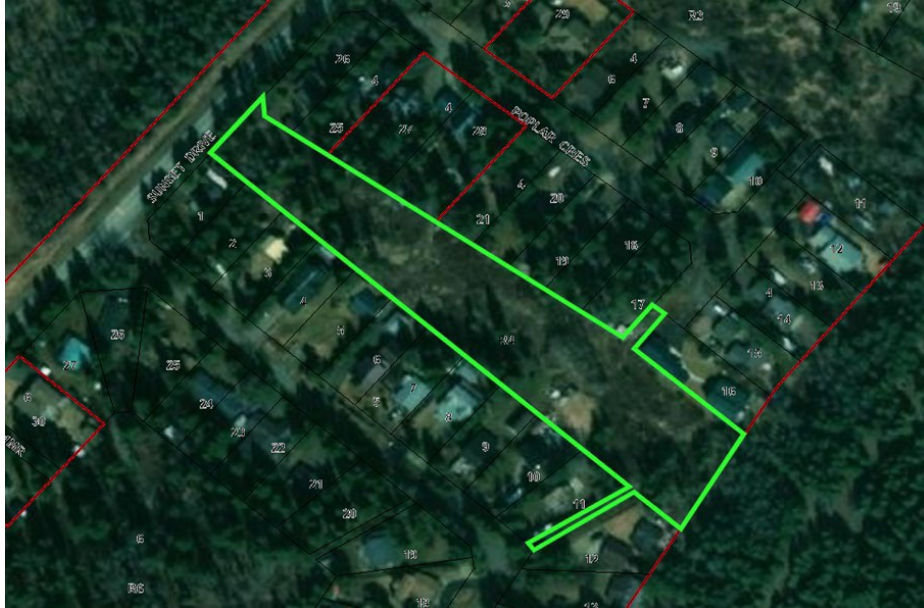


PLAN 856MC
BLOCK 6
LOT R6 (COMMUNITY RESERVE)
CONTAINING 0.959 HECTARES (2.37 ACRES) MORE OR LESS
EXCEPTING THEREOUT :

	HECTARES	(ACRES)	MORE OR LESS
A) PLAN 1323742 - SUBDIVISION	0.026	0.064	

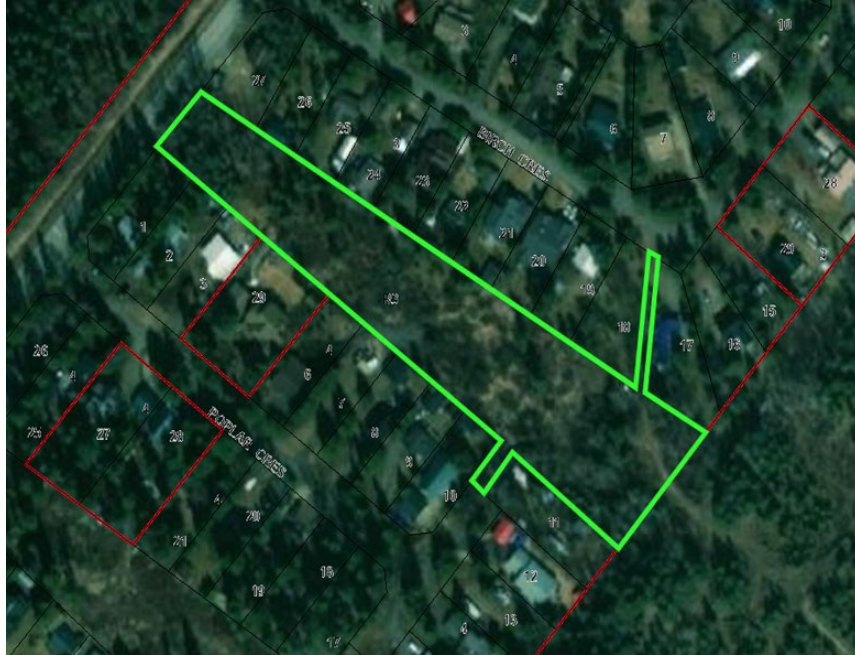
EXCEPTING THEREOUT ALL COAL, PETROLEUM AND VALUABLE
STONE AND THE RIGHT TO WORK THE SAME, AND ALSO EXCEPTING
THEREOUT ALL OTHER MINES AND MINERALS

Designation change from Community Reserve
(R) to Municipal Reserve (MR)
Change lot designation to Lot 33MR



PLAN 856MC
R4 (COMMUNITY RESERVE)
CONTAINING 2.22 ACRES, MORE OR LESS
EXCEPTING THEREOUT ALL COAL, PETROLEUM AND VALUABLE STONE
AND THE RIGHT TO WORK THE SAME AND ALSO EXCEPTING THEREOUT
ALL OTHER MINES AND MINERALS

Designation change from Community Reserve
(R) to Municipal Reserve (MR)
Change lot designation to Lot 30MR, Block 4



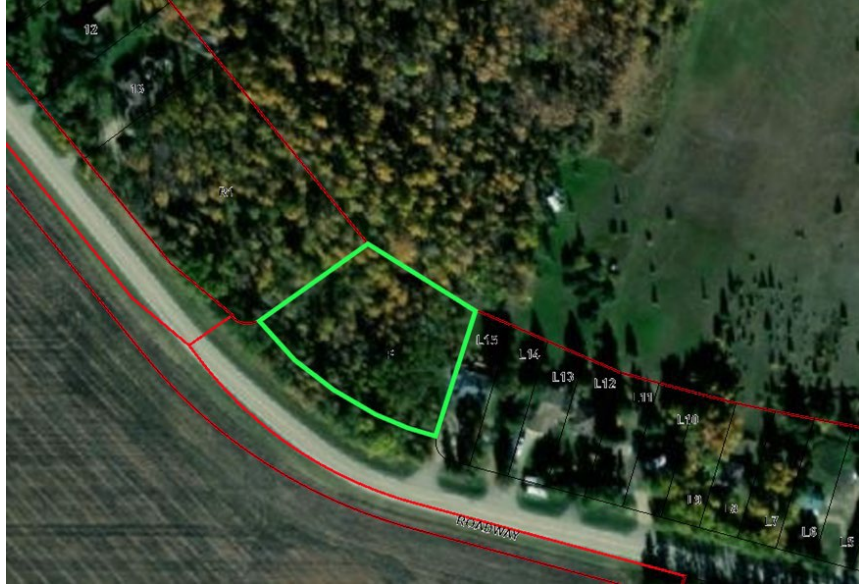
PLAN 856MC
LOT R3 (COMMUNITY RESERVE)
CONTAINING 0.841 HECTARES, MORE OR LESS
EXCEPTING THEREOUT ALL MINES AND MINERALS
AND THE RIGHT TO WORK THE SAME

Designation change from Community Reserve
(R) to Municipal Reserve (MR)
Change lot designation to Lot 31MR, Block 3



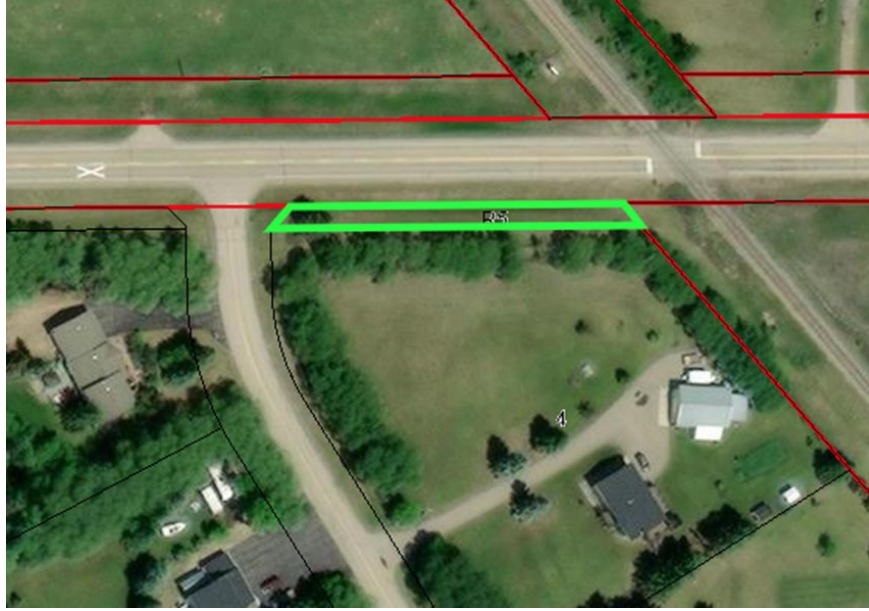
PLAN 7520233
BLOCK ONE (1)
LOT RONE (R-1) (RESERVE) CONTAINING ONE AND
FORTY FOUR HUNDREDTHS (1.44) ACRES MORE OR LESS
EXCEPTING THEREOUT ALL MINES AND MINERALS

Designation change from Reserve (R) to Municipal
Reserve (MR)
Change lot designation to Lot 17MR



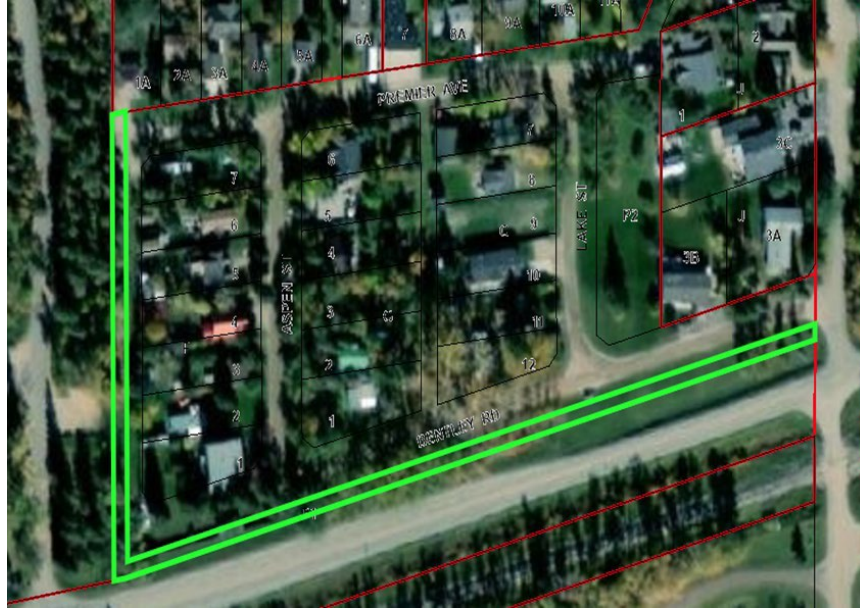
PLAN 1970EO
LOT P (PUBLIC PARK) (RESERVE)
EXCEPTING THEREOUT ALL MINES AND MINERALS

Designation change from Public Park (P)
to Municipal Reserve (MR)
Change lot designation to Lot 16MR



PLAN 7822831
BLOCK TWO (2)
LOT R-FIVE (R-5) (RESERVE)
EXCEPTING THEREOUT ALL MINES AND MINERALS

Designation change from Reserve (R) to
Municipal Reserve (MR)
Change lot designation to Lot 5MR



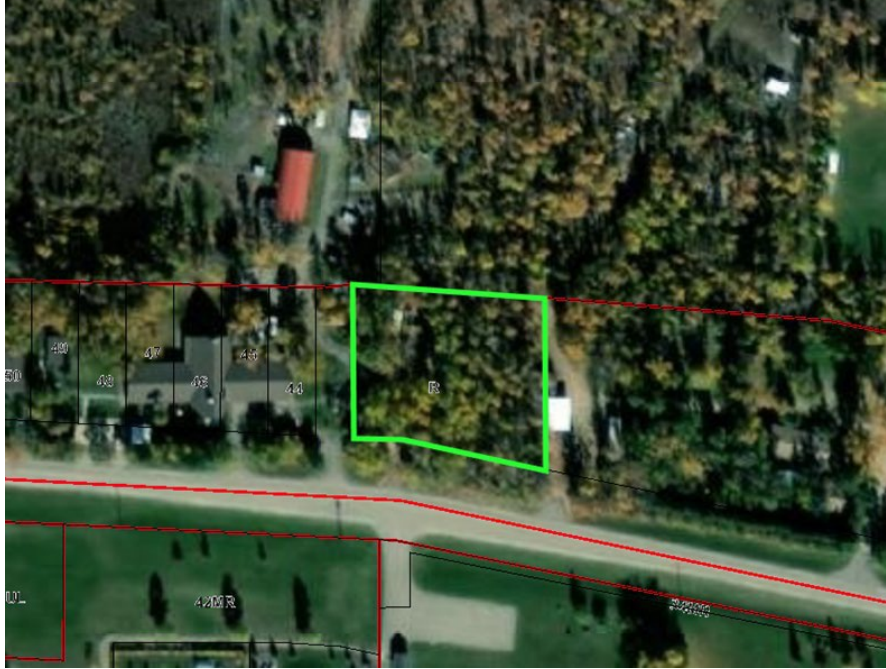
PLAN 3737KS
BLOCK P1 (PARK RESERVE) CONTAINING 0.50
OF AN ACRE MORE OR LESS
RESERVING THEREOUT ALL COAL AND PETROLEUM AND ALSO
RESERVING THEREOUT ALL OTHER MINES AND MINERALS

Designation change from Park Reserve
(P) to Municipal Reserve (MR)
Change lot designation to Lot 5MR, Block J



PLAN 3737KS
BLOCK P2 (PARK RESERVE) CONTAINING 0.50 OF AN
ACRE MORE OR LESS
RESERVING THEREOUT ALL COAL AND PETROLEUM AND ALSO
RESERVING THEREOUT ALL OTHER MINES AND MINERALS

Designation change from Park Reserve
(P) to Municipal Reserve (MR)
Change lot designation to Lot 4MR, Block J



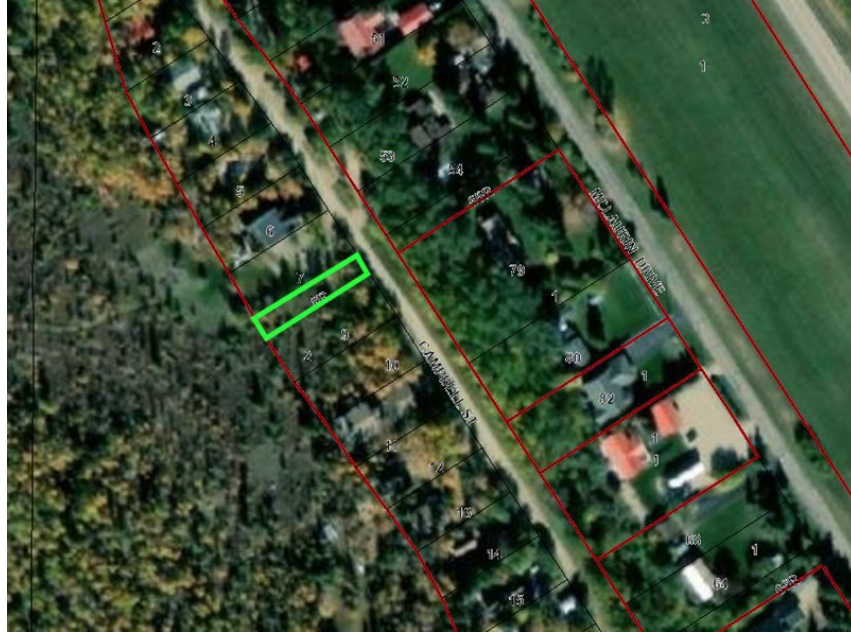
PLAN 1628CL
LOT R
(RESERVE)
EXCEPTING THEREOUT ALL MINES AND MINERALS

Designation change from Reserve (R) to
Municipal Reserve (MR)
Change lot designation to Lot 53MR



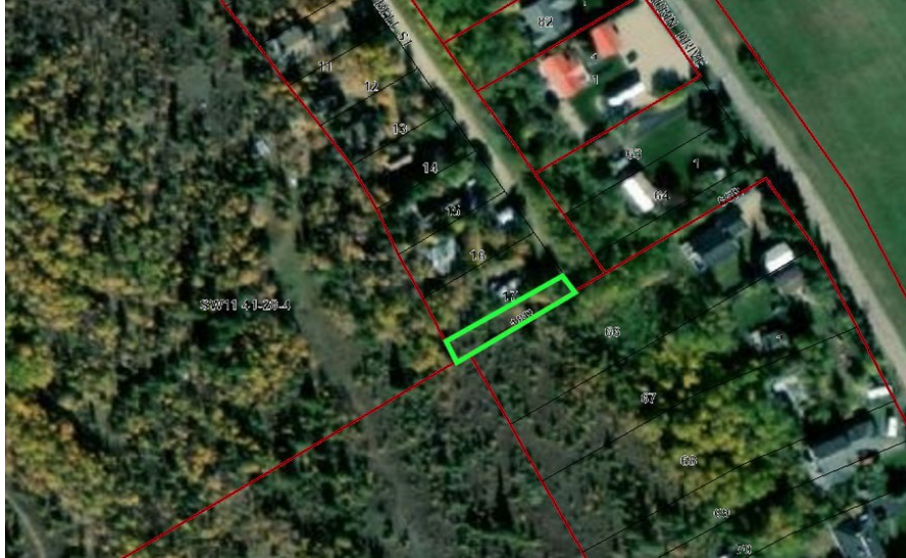
FIRST
PLAN 1483MC
BLOCK 2
LOT 1R (COMMUNITY RESERVE)
EXCEPTING THEREOUT ALL MINES AND MINERALS

Designation change from Community Reserve
(R) to Municipal Reserve (MR)
Change lot designation to Lot 1MR



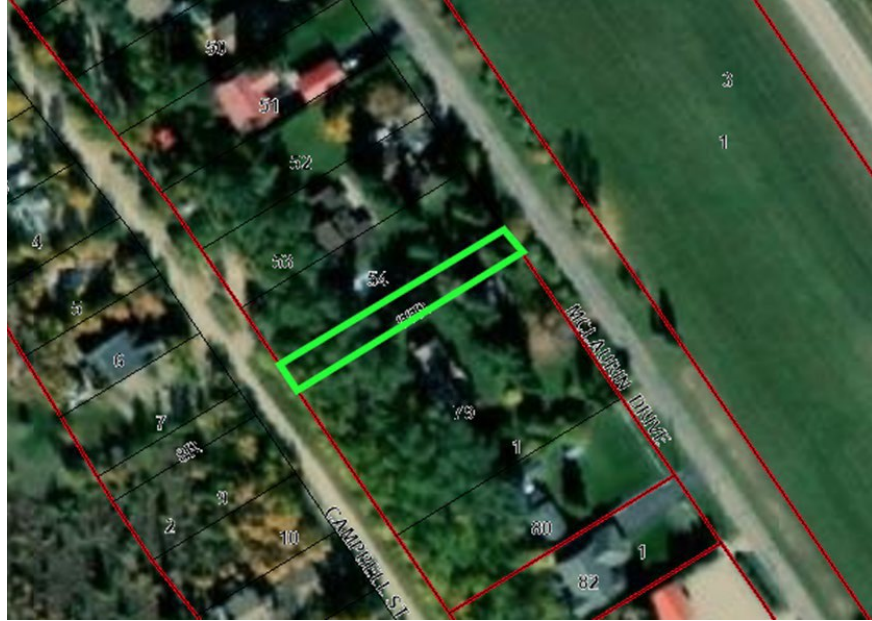
SECOND
PLAN 1483MC
BLOCK 2
LOT 8R (COMMUNITY RESERVE)
EXCEPTING THEREOUT ALL MINES AND MINERALS

Designation change from Community Reserve
(R) to Municipal Reserve (MR)
Change lot designation to Lot 8MR



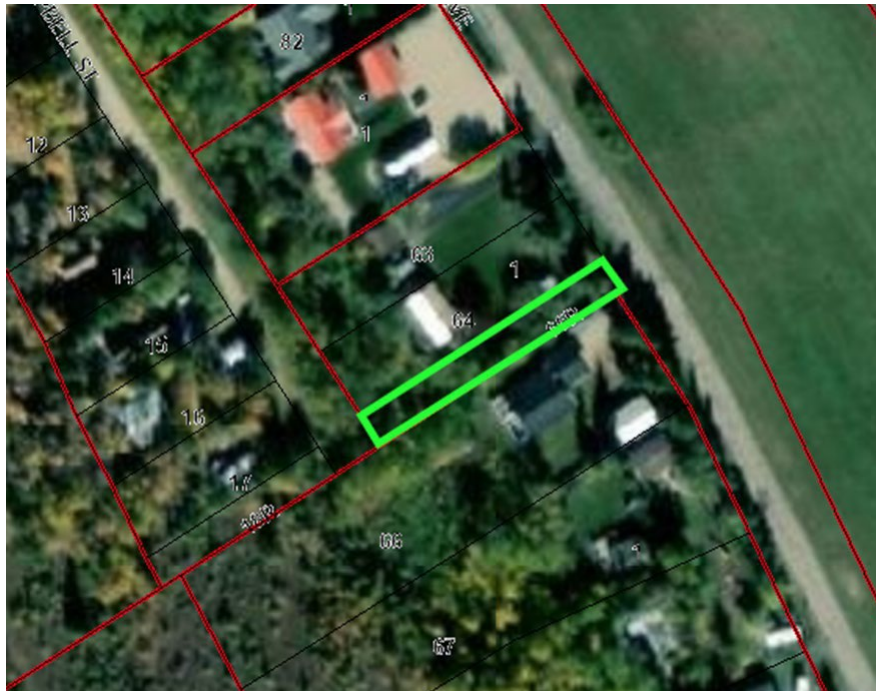
THIRD
PLAN 1483MC
BLOCK 2
LOT 18R (COMMUNITY RESERVE)
EXCEPTING THEREOUT ALL MINES AND MINERALS

Designation change from Community Reserve
(R) to Municipal Reserve (MR)
Change lot designation to Lot 18MR



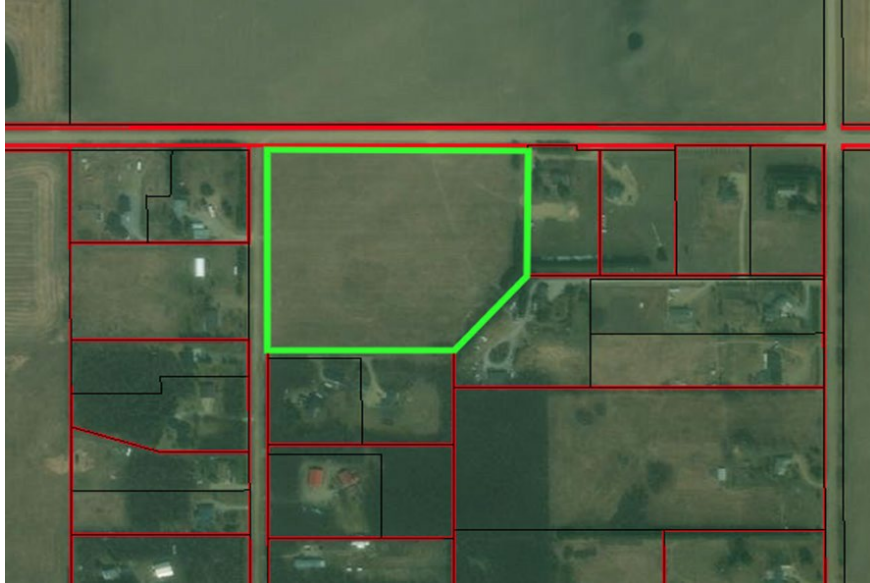
PLAN 7722679
BLOCK ONE (1)
LOT FIFTY FIVE-R (55-R) (RESERVE)
EXCEPTING THEREOUT ALL MINES AND MINERALS

Designation change from Reserve (R) to
Municipal Reserve (MR)
Change lot designation to Lot 55MR



PLAN 7722679
BLOCK ONE (1)
LOT SIXTY FIVE-R (65-R) (RESERVE)
EXCEPTING THEREOUT ALL MINES AND MINERALS

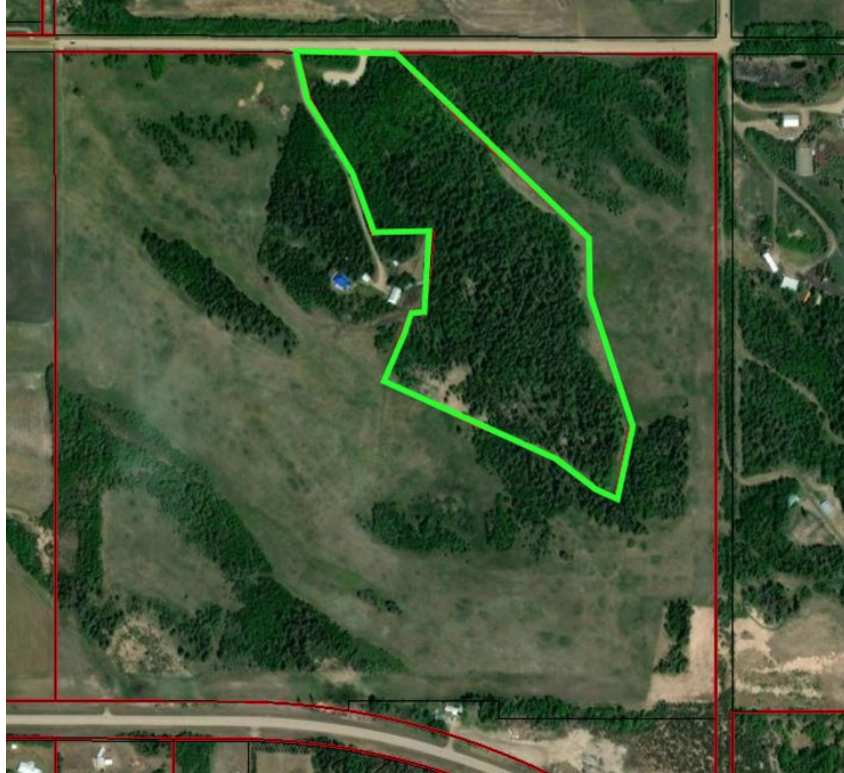
Designation change from Reserve (R) to
Municipal Reserve (MR)
Change lot designation to Lot 65MR



PLAN 7521105
LOT R-THIRTEEN (R-13) (RESERVE)
CONTAINING SIXTEEN AND TWO HUNDREDTHS (16.02) MORE OR LESS
EXCEPTING THEREOUT:

	HECTARES (ACRES) MORE OR LESS	
A) PLAN 0426722 ROAD	0.144	0.36
EXCEPTING THEREOUT ALL MINES AND MINERALS		

Designation change from Reserve (R) to
Municipal Reserve (MR)
Change lot designation to Lot 20MR, Block 2



PLAN 1723277
BLOCK 2
LOT 2
EXCEPTING THEREOUT ALL MINES AND MINERALS

Designate as Municipal Reserve (MR)
Change lot designation to Lot 2MR



DESCRIPTIVE PLAN 0620731

BLOCK 1

LOT 4

CONTAINING 86.54 HECTARES (213.85 ACRES) MORE OR LESS

EXCEPTING THEREOUT:

	HECTARES (ACRES) MORE OR LESS	
A) PLAN 0828518 ROAD	5.07	12.53
B) PLAN 1321488 ROAD	0.217	0.54
C) PLAN 1321490 ROAD	0.639	1.58
D) PLAN 1520048 ROAD	24.93	61.60
EXCEPTING THEREOUT ALL MINES AND MINERALS		

Designate as Municipal Reserve (MR)

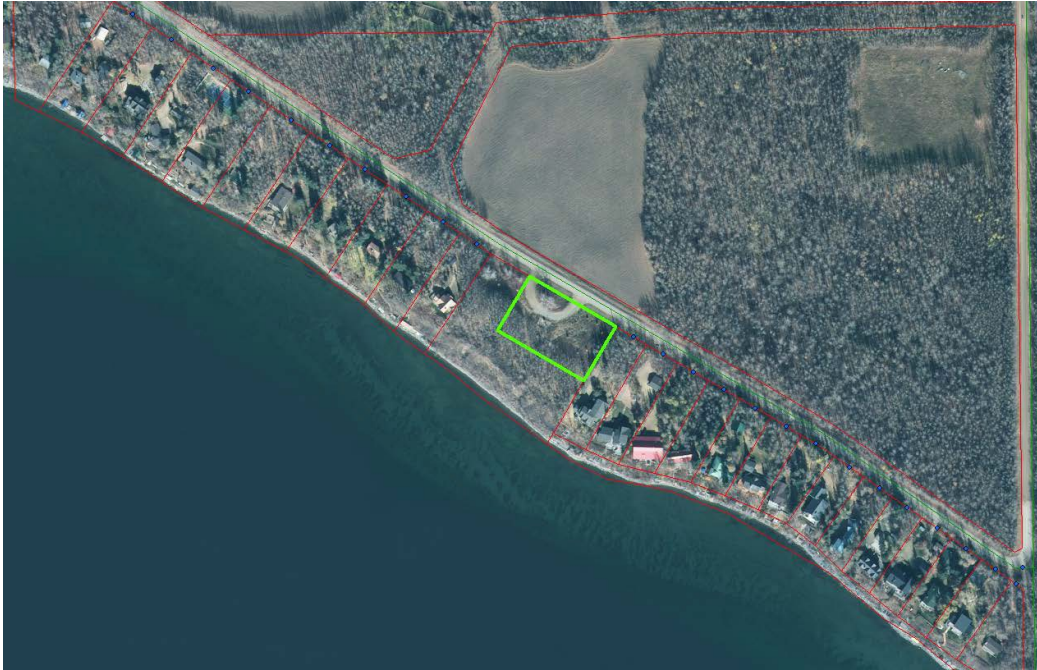
Change lot designation to Lot 4MR

SCHEDULE C: PUBLIC UTILITY LOT DESIGNATIONS



PLAN 2220542
BLOCK 1
LOT 1
EXCEPTING THEREOUT ALL MINES AND MINERALS

Designate as Public Utility Lot (PUL)
Change lot designation to Lot 35PUL



PLAN 2322171
BLOCK 1
LOT 3MR (MUNICIPAL RESERVE)
EXCEPTING THEREOUT ALL MINES AND MINERALS
AREA: 0.406 HECTARES (1 ACRES) MORE OR LESS

Designation change from Municipal Reserve (MR)
to Public Utility Lot (PUL)
Change lot designation to Lot 30PUL