



County News

Friday, January 19, 2024 | Volume 1

Dwellings in the Agricultural Area

WHAT WE HEARD

During November and December 2023, Lacombe County consulted the community about dwellings in the agricultural area. This included hosting a public meeting at the Lacombe County office on November 29, 2023, with a total of 61 attendees. A follow up survey was completed, of which we saw an outstanding 199 responses.

The results are in from this community consultation, and the survey results revealed insights into the community's vision for housing in the agricultural area, the current housing needs, and the future housing needs. Highlights of the results are below - and you can read the detailed survey results at www.lacombecounty.com/dwellings

NEXT STEPS

Currently, Lacombe County's policy allows for two dwell-

ings on Agricultural 'A' District parcels of at least 40 acres in size.

Council reviewed, and carefully considered the community consultation results during the Council meeting on January 11, 2024. Based on the feedback received, Council directed Administration to draft bylaw changes that would allow for two dwellings on Agricultural 'A' District parcels of 10 acres or more.

The draft bylaws will be presented to Council for First Reading on February 8, 2024, and a Public Hearing will be scheduled if the bylaws receive First Reading. The Public Hearing gives the public an opportunity to speak to Council about the proposed bylaw changes. If Council decides to proceed, more details on how you can participate in the Public Hearing will be provided following the February 8, 2024 Council meeting.

What's Inside

- 2 Year in Review - 2023 in Lacombe County
- 3 What you need to know about Lacombe County reserve land
- 3 Community Program Grant deadline: February 1
- 5 Mirror Corner | Upcoming events
- 6 INPUT | Red Deer River flood study
- 8 Upcoming Info sessions for ag funding
- 10-11 Subdivision & Development Activity Map
- 10 SAVE THE DATE | Spring Tune Up 2024
- 12 Upcoming Workshops!
- 13 Assessment FAQs
- 14-15 Council Highlights
- 16 REGISTER | Provincial Health care in-person engagement
- 21-23 Around the County: Events & Info

Watch for JOB OPPORTUNITIES:
Page 6, Page 9, and Page 16.

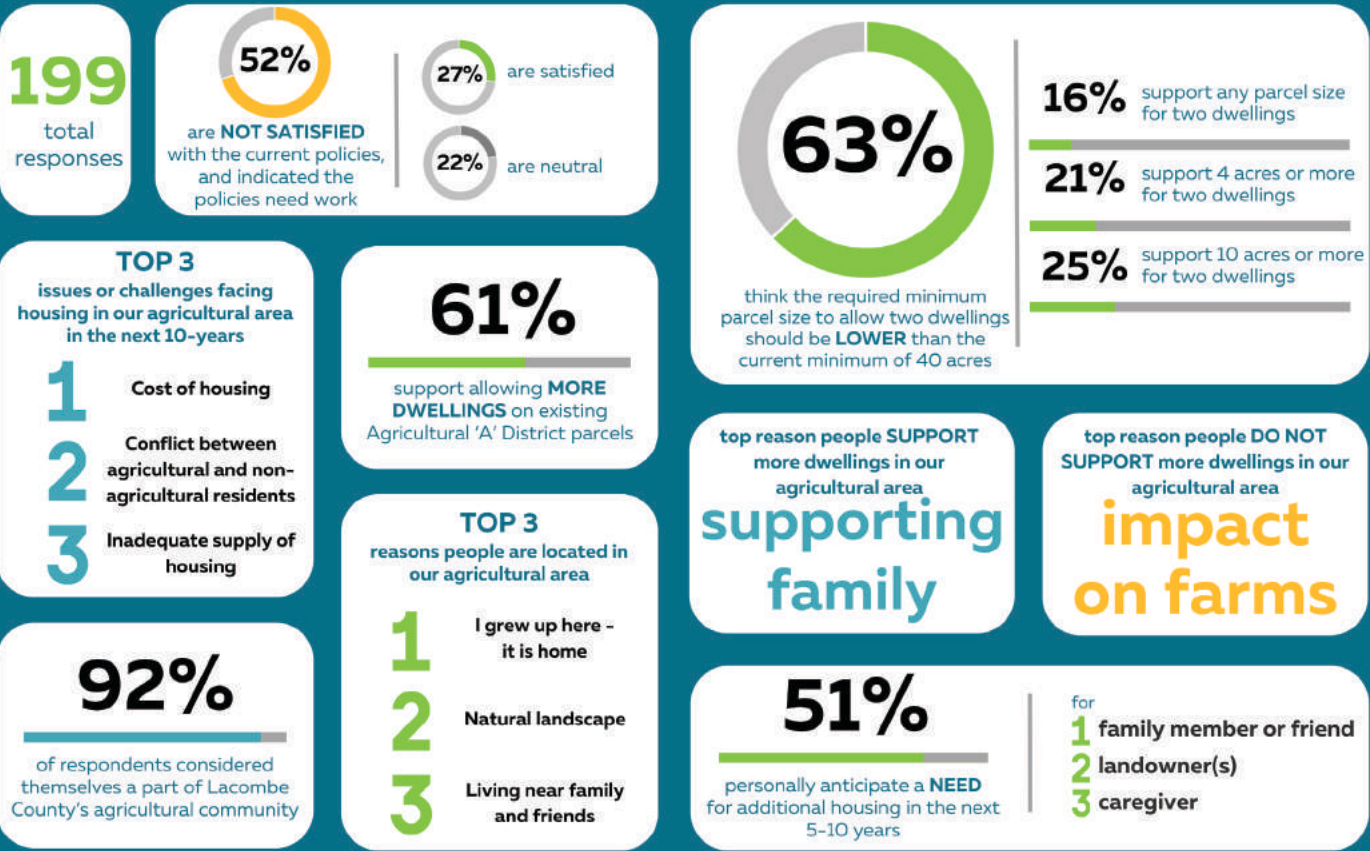
www.lacombecounty.com



Publication Mail Agreement No 43726064

Return undeliverable items to:
Lacombe County
RR3, Lacombe, AB T4L 2N3

Snapshot of Survey Results



Lacombe County: A Year in Review - 2023

As we step into the New Year, it's important to reflect on the milestones and achievements that have shaped Lacombe County in 2023. This year has been marked by significant progress across all County departments, all contributing to the betterment of our community.

Operational Excellence and Community Development

Our Operations team has been instrumental in enhancing the County's infrastructure. Key projects included the meticulous upkeep of our trail system, the construction of a new parking lot at Burns Nature Park, and the paving of Sandy Point Trail. Lacombe County also worked with community members in the Hamlet of Mirror to establish the Mirror Walking Trail, which consists of natural trails as well as existing sidewalks and roadways.

A noteworthy venture was establishing a tree farm, a staff-generated idea from the Lacombe County Innovation Initiative. Another idea from this initiative is the approval of wheelchair-accessible matting at Sandy Point Beach. Installation of the matting will take place in spring 2024.

In road construction, our skilled crew reconstructed 17.7 km of road, while our gravel team diligently resurfaced 626 km of gravel roads. These efforts ensure safe and smooth transportation for our residents.

The shop staff have been busy fabricating new equipment and maintaining equipment in use. New arrivals require work to customize units for their intended use, and some of these rig-up projects include tractors, pickup trucks, and scrapers.

Planning and Community Development

The Planning Services team has had a busy year, processing over 178 development permit applications with an estimated construction value of nearly \$40 million and 30 subdivision applications. The adoption of two Area Structure Plans (ASP), being the South of Highway 11 (East of Haynes) ASP and in Southeast Bentley ASP, followed extensive community consultation. These plans pave the way for future development and community enhancement.

Additionally, significant progress has been made on the QEII West ASP and the Lacombe County/Village of Alix Intermunicipal Development Plan. Engaging the community in discussions about dwellings in the agricultural area has been a focus. This focus reflects our commitment to inclusive planning.

Our new economic development officer, Kerrie Taylor, has been active in securing grants for various projects. A highlight is the development of a video series showcasing the vibrancy and appeal of Lacombe County, which will be coming out in early 2024.

Community Services in the Community

Community Services hosted the largest Farm Safety Day to date, educating 320 children about vital farm safety practices. Also, our inaugural Wetland Day and the distribution of 160 trees for environmental sustainability are testaments to our commitment to ecological awareness and conservation.

In collaboration with Wolf Creek Public Schools, Lacombe County received a Friends of Education Award, acknowledging our involvement in the School Resource Officer Program. The implementation of the

2023-2026 Traffic Safety Plan, supporting the 'Vision Zero' initiative, underscores our dedication to ensuring the safety of our residents and roadways.

Corporate Services and Technological Advancements

This year, Corporate Services coordinated new aerial pictography, benefiting all County departments. Major upgrades to the County's IT network and cybersecurity were accomplished, fortifying our digital infrastructure. The Finance team introduced new budget and investment policies, reflecting our commitment to fiscal responsibility.

A significant step towards modernization was taken by the Assessment department, transitioning towards a more digitized system and moving away from paper records.

The launch of the new Lacombe County website, a collaborative effort involving every department, has been a significant success, receiving positive feedback from the community.

This year saw many achievements and steadfast progress for all our departments. From enhancing our infrastructure and planning for future growth to fostering community engagement and prioritizing safety, every initiative has been a step towards a brighter future for our County. The collaborative effort across all departments has not only improved the quality of life for our residents but also sets a strong foundation for the years to come.

As we welcome 2024 with optimism, Lacombe County remains committed to innovation, excellence, and the continued pursuit of a vibrant and thriving community. Success grows here!



(Top left) County crews paving the new Sandy Point Trail.
(Bottom left) Reeve Barb Shepherd at the Burns Nature Park grand opening.
(Top Middle) School Resource Officers, including Lacombe County CPO Dave Lahucik, received the Friends of Education Award.
(Bottom Middle) The Grain Safety station at the 2023 Farm Safety Day.
(Top right) Some attendees at the inaugural Wetland Day.

Enhancing Lacombe County's Parks & Reserves Management: *WHAT YOU NEED TO KNOW*

Attention Lacombe County residents! We have some news to share about our County reserve lands. The Policy RC(8): Use and Management of County Reserve Land has been updated to improve the management and use of our County reserve lands. These changes will ensure that our reserve lands remain a valuable resource for the public.

There are five key changes to Policy RC(8) that you need to know about:

1. Special Use of Reserve Permitting:

To ensure that our reserve lands are preserved while still accommodating various community needs, Lacombe County will now require special use of reserve land permits to authorize activities in these areas. These activities include beach clean-ups, winter storage of docks and boat lifts, and maintenance of licensed encroachments. This addition allows better monitoring of activities on County lands and provides clear guidance to users regarding permissible activities on reserve lands.

2. Encroachments and Unauthorized Structures on Reserve Lands:

To ensure responsible land use, a provision for the construction of new encroachments and the licensing of existing encroachments on County reserve lands in areas without public access facilities has been included. Encroachment agreement requests will be reviewed by the County Manager, considering environmental impact, existing public access facilities, access constraints, and the design of the encroachment. This addition helps maintain the integrity of reserve lands while allowing for responsible development.

3. Use of Encroachment Agreement Fees:

Encroachment agreement fees will now be collected and placed in a reserve fund, earmarked for the future enhancement of County reserve lands or the development of public access facilities on lands without such facilities. Previously, these funds were collected as

general revenue. This new approach ensures that the money generated from encroachments directly benefits the preservation and enhancement of the County's natural areas.

4. Reclamation Requirements:

To address the need for accountability, reclamation requirements have been added to clarify the process when reserve lands are damaged. This change ensures that damaged areas are restored appropriately, safeguarding the beauty and ecological health of our reserve lands.

5. Removal of Unauthorized Items:

Unauthorized items on County reserve lands will now be managed with greater transparency. Items will have a notification physically posted, indicating the County's intent to remove them. This notice will include contact information and associated removal timelines. Items unclaimed will be removed by the County and disposed of at its discretion. This change helps maintain the cleanliness and safety of our reserve lands while allowing items to be retrieved.



Updates to the Parks and Reserves Management Bylaw

On December 14th, Bylaw 1398/23 Parks and Reserves Management Bylaw was given third reading by Council and was passed. This will enable Lacombe County to better support Policy RC(8) through enforcement measures, if needed, ensuring that our County lands are respected and protected.

"Rules for Using County Land: What You Shouldn't Do"

When you're out on our County-owned lands, it's important to respect the environment and keep things safe.

SEE PAGE 13 FOR RULES FOR USING COUNTY LAND



APPLY TODAY: Community Program Grants available

Lacombe County is committed to strengthening the quality of life for residents and fostering civic pride by providing financial support for community programs, events and activities.

Policy RC(9) - County Support of Community Programs, Events and Activities provides additional support for organizations in the County and its urban municipalities, as well as for the municipalities themselves. Support will be given for events and activities which are held for the benefit and enjoyment of the general public, demonstrate a financial need, and other criteria explained in the policy.

The application deadline is February 1, 2024; applicants will be advised by March 31st of the status of their application.

Policy Guidelines/Procedures:

Eligibility: Urban municipalities within the County, and community organizations in the urban municipalities within the County and within Lacombe County are eligible for funding, subject to the following guidelines:

To be eligible for consideration, programs:

- Must demonstrate a need for financial support from the County;
- Must be held for the enjoyment and benefit of the general public;
- Must be hosted on an annual basis and/or recognize significant milestone events;
- Must not charge an admission, entrance or registration fee for the program, event or activity;
- Must receive at least an equivalent amount of funding from the urban municipality in which the program, event or activity is being held as that being requested from the County;
- Must receive at-least an equal amount of funding from the community organization if the program, event or activity is being held in the County; and
- Must take place in the County, or in the urban municipalities within the County in 2024.

The following are not eligible for support under this policy:

- capital facilities and equipment;
- youth and adult sports teams and associated programs, events and activities;
- school reunions;
- private functions;
- community organizations, programs, events and activities that receive support from the County through other programs or policies.

Funding Allotment & Allocation:

Funding will be based on \$0.75 per capita based on the current year official population of Lacombe County and the urban municipalities within the County, with a \$1,000 minimum allotment per town or village, and a \$500 minimum allotment per summer village.

To view the Policy and a downloadable application form, see the County Website and look for the Grants and Funding page (<https://www.lacombecounty.com/en/our-government/grants-and-funding.aspx>).

SAFETY FIRST

USE RESPECT – ASK FIRST SIGNS



Use Respect – Ask First

These signs are available free for landowners across Alberta.

The signs include a space for landowner's contact information and/or conditions of the land.

These Signs are available at the Lacombe County office free of charge.

Use Respect - Ask First is about good communication between landowners and people wanting to access private land for recreation (like hunting, fishing, hiking, wildlife photography, etc.). Landowners can put **Use Respect – Ask First** signs on their property, to encourage people who would like to access the land to contact them for permission. The signs include a space for the landowner's contact information.

Do the right thing. Ask landowners for permission BEFORE going on their property. It's trespassing if you don't.

Mirror residents reminded to shovel sidewalks

Residents in Mirror are reminded that all snow and ice must be removed from their sidewalks within 48 hours of a snowfall, pursuant to Bylaw 1098/09.

Should the County have to pay for an employee or contractor to clear the snow/ice from a property, the occupant or owner will be charged for the cost and may face additional fines.



Investing in natural drought and flood protection

Alberta's government is investing \$3.5 million to help make the province more naturally drought resilient, to prevent floods and improve water quality.

Watersheds are areas of land that drain rainfall and melted snow into streams, rivers and lakes. Healthy and resilient watersheds play an important role in preventing drought, reducing the risk of floods and supporting healthy communities and ecosystems.

This year, Alberta's government is providing \$3.5 million to fund eight projects in communities across the province through the [Watershed Resiliency and Restoration Program](#). These projects will help restore riverbanks and watersheds, stabilize stream banks and improve natural drainage, supporting communities affected by recent droughts and floods.

"It has never been more important to improve the resiliency of Alberta's watersheds. By working with local communities and partners, we are helping mitigate the impact of future floods and droughts in communities across the

province while creating healthier water bodies for future generations," said Rebecca Schulz, Minister of Environment and Protected Areas.

Each year, communities and local partners receive project funding through the Watershed Resiliency and Restoration Program to increase the natural ability of Alberta's watersheds to reduce the intensity, magnitude, duration and effects from flooding and droughts.

Projects receiving funding are led by stewardship organizations, non-profits, Indigenous communities and municipalities to restore critical wetland and riparian areas while promoting the ongoing stewardship and preservation of critical watersheds.

"This vital grant will boost community resilience across the Oldman watershed at a critical time when southwest Alberta is facing extreme drought conditions. It will allow us to restore the essential natural infrastructure that reduces drought impacts for those being affected the most – agricultural producers,

First Nations and municipalities," said Shannon Frank, executive director, Oldman Watershed Council

"ALUS is grateful to the Government of Alberta for their support through the Watershed Resiliency and Restoration Program. This generous funding breathes life into our project, Tributaries to Resiliency: Farm-level Action and Community Connection. Through this project, agricultural producers are building ecological and economic resilience by adding natural infrastructure to the landscape and undertaking community engagement. With ALUS, Alberta's farmers and ranchers are enhancing water quality, mitigating the effects of drought, flood and extreme heat and supporting biodiversity. Their efforts are contributing to a resilient and prosperous future for all Albertans," said Christine Campbell, senior western hub manager, ALUS.

To date, Alberta's government has allocated more than \$46.5 million to flood and drought resilience projects through the Watershed Resiliency and Restora-

tion Program. Since 2014, this funding has supported the restoration, enhancement and conservation of 5,475 hectares of wetlands and riparian areas and 320 kilometres of streambank.

More information on the newly funded projects and how to apply for future funding is available online.

QUICK FACTS

- Priority watersheds were identified based on indicators of watershed resilience, such as their high risk and consequence for flood and drought across the province.
- More than 11,000 Albertans have participated in training workshops funded through this program on natural restoration techniques and other practices that enhance watershed resiliency.
- The next application deadline for [Watershed Resiliency and Restoration Program](#) funding is Sept. 15.

MIRROR CORNER

Mirror Dog License Renewals

A license is required for all dogs in Mirror. Dog tag renewals will be mailed out in December 2023. **The fee is \$15.00 for an altered dog and \$25.00 for an unaltered dog. After February 28, 2023, the cost increases to \$30 for an altered dog and \$50 for an unaltered dog.** For more information, please call (403) 782-6601 or visit www.lacombecounty.com (County Services > Hamlet of Mirror > Policies/ Bylaws > Dog Control).

Lacombe County will issue a tag for each dog, which must be attached to a collar worn by the dog at all times. Lacombe County Enforcement Officers will do checks to ensure compliance.

If you would like to report a contravention of the Dog Control Bylaw, please call 403-506-9380, or email info@klassickennels.com.

For animal welfare issue please contact the Alberta SPCA at <http://www.albertasPCA.org>/

MIRROR REC SOCIETY Annual General Meeting

The Mirror Rec Society will hold its annual AGM. Anyone interested in becoming part of the hall volunteer group should attend

Jan. 30, 2024 at 7:30 pm.

5037 50 Ave (Community Hall)

Thank you in advance, Mirror Rec Society members.

Book Sale at the Mirror Library!

Saturday, January 27
10 am - 2 p.m.

Books, DVDs, puzzles! A great selection at great prices. Come out and beat the winter blues!

Preschool Time for Children & Their Caregivers

STAY AND PLAY

CRAFTS, ACTIVITIES, & STORIES!

Everyone is welcome!

Starts Tuesday, January 16

At Mirror Library

Tuesdays 10:30 to 12:30

By Lacombe & Area Family Resource Network

See also facebook.com/booksinmirror & facebook.com/lacombefrn

Mirror group hosts successful family skating event

Our inaugural Fire and Ice Family Event, held on Saturday December 30th, 2023, was a resounding success, drawing over 80 community members for a mix of ice skating, bonfire, food/drinks and fun.



A heartfelt thank you to all our community volunteers; your unwavering dedication truly made this event a success. A special shout-out to our incredible ice crew who battled Mother Nature and triumphed, producing the best outdoor ice in central Alberta.

We extend our gratitude to Rick's Central Sharpening in Gull Lake, Alberta, for their generous donation of two new Zamboni blades, ensuring our ice was in top-notch condition.

We extend our thanks to Lacombe County for their funding, providing new LED lights, and ensuring equipment maintenance—essential elements that enhanced the overall experience.

Stay updated on upcoming events and check our ice schedules by following us on Facebook at Mirror

Association for Ball Diamonds, Campground, and Skating Society.



2024 Mirror Dog Tags

A license is required for all dogs in Mirror. For more information, please call (403) 782-6601 or visit www.lacombecounty.com/en/living-here/animal-control.aspx.

Lacombe County will issue a tag for each dog, which must be attached to a collar worn by the dog at all times. Lacombe County Enforcement Officers will do checks to ensure compliance.

If you would like to report a contravention of the Dog Control Bylaw, please call 403-506-9380, or email info@klassickennels.com. **For animal welfare issue please contact the Alberta SPCA at <http://www.albertasPCA.org>/**

Jolly Seniors

Pancake breakfast every second Sunday from 9 a.m.-1 p.m.

Booking Mirror Community Hall

Call Lisa 403-788-3890 or cell 403-505-3894.

Friends of the Mirror Library Society/ Mirror Library

The Mirror Library would like to remind patrons of the many items available for borrowing. We carry books for everyone,

audiobooks, DVDs, games, and puzzles.

Hours: Wednesdays 2-5 p.m.
Thursdays 10 a.m. - 1 p.m.
2nd & 4th Saturdays
10 a.m. - 2 p.m.

Please like us at: facebook.com/booksinmirror for the most up to date information. The Library also has meeting spaces for rent and free Wi-Fi. Please contact us through the Facebook page or email booksinmirror@gmail.com.

Mirror Royal Canadian Legion Branch 189 - 5015 50th Avenue

Meat Draws Saturday at 4 p.m.
General meetings second Sunday

at 1 p.m. (unless otherwise posted).

Mirror and District Museum

Contact mmuseum@cciwireless.ca if you would like to volunteer and for hours of operation

CN Rail crossing delays

If you experience delays longer than 20 minutes at the Mirror rail yard crossing, call CN Rail at 1-800-465-9239. Follow the prompts and be ready to provide details shown on the crossing signal mast to CN personnel. Transport Canada may be reached at 1-888-463-0521.

Red Deer River flood study engagement

Provide your input on draft reports and flood maps from our Red Deer River flood study by February 12, 2024.

The Ministry of Environment and Protected Areas is seeking feedback from Albertans on draft reports and flood maps from the Red Deer River flood study.

This is the second phase of public engagement for the draft Red Deer River flood study. It focuses on draft flood hazard maps, which define floodway and flood fringe areas to help with long term planning. Engagement on draft flood inundation maps, which show areas at risk for different sized floods to help with emergency response, and related reports was completed in January 2021.

Public engagement is part of our standard flood study finalization process, and occurs after local authorities, such as towns, cities, counties, municipal districts, and Indigenous communities, have had an opportunity to review the draft reports and flood maps.

GET INFORMED

You do not need to be a technical expert to provide your feedback.

- [View draft flood hazard maps](#)
- [General Information about Flood Studies](#)
- See the Draft Study Reports at: <https://www.alberta.ca/red-deer-river-flood-study-engagement>

If you want to learn more before providing feedback, additional resources are available to help you get informed.

GET INVOLVED

The deadline to complete the survey and provide feedback is Monday, February 12, 2024, at 4:30 p.m..

TAKE THE SURVEY

The draft reports and flood maps have gone through several stages of review already, but we welcome your feedback regarding factual errors or omissions.

We are particularly interested in your feedback on the draft flood hazard maps which were not included in the first phase of engagement and are being shared with the public for the first time, but all feedback is welcome.

NEXT STEPS

We will carefully consider all submitted feedback. Due to the potential volume of submissions we likely will not be able to respond to your feedback directly.

Future study update notices will be provided through the Flood Hazard Identification Program. This will include more information about the study status and where we are in the finalization process.

Lacombe County staff raise \$1,200 for local food bank



Lacombe County Social Committee representative Mike Bates presented Millie Snow, Executive Director of the Lacombe Community Food Bank, with a cheque for \$1,200.

This money was raised by staff throughout the year by the County's Social Committee and was donated on behalf of the employees of Lacombe County.



WE'RE HIRING!

Assistant Construction Supervisor

Permanent, Full-Time
Monday-Friday (7:00 AM - 5:00 PM)

Full Details
www.lacombecounty.com/careers

Apply by January 31, 2024 to
hr@lacombecounty.com



ATTENTION: Notification of Access for County Assessors

Under the authority of the Municipal Government Act, Part 9, Lacombe County's Assessors regularly visit properties throughout the municipality to collect and verify the information for the purpose of preparing property assessments. An inspection may occur at any time throughout the day between 8:30 am and 4:30 p.m.

Assessors operate vehicles marked as the Lacombe County and carry identification and will present it upon request. If you have questions or concerns, please contact us at the Lacombe County Administration Office at 403-782-6601.

OPERATIONS

Lacombe County Winter Road Maintenance

Lacombe County has more than 2,000 km of paved and gravel roads to maintain through the winter. Time frames will vary depending on the severity and duration of a snowstorm.

PAVED ROADS - ORDER OF PRIORITY FOR SNOW REMOVAL

- County-designated Primary Main Roads
- County-designated Secondary Main Roads
- Hamlets and Subdivisions
- Main access roads to Subdivisions

The goal of winter maintenance for paved roads is to remove snow and ice from the road surface as quickly as possible. Lacombe County will undertake snow removal in a manner that minimizes backtracking or excessive travel. **The basic service level that we strive for is to have all the paved roads maintained to reasonable winter conditions within 12 hours after a snowstorm; however, this will vary depending on the severity and the storm's duration.**

PLEASE NOTE THAT ALL NUMBERED HIGHWAYS IN THE COUNTY ARE MAINTAINED BY ALBERTA TRANSPORTATION – CONTRACTED BY MAINROAD ALBERTA (1-877-875-3263)

GRAVEL ROADS – ORDER OF PRIORITY FOR SNOW REMOVAL

- Local Roads – Snow removal will commence in alternating locations. Lacombe County will undertake snow removal in a manner that minimizes motor grader backtracking or excessive travel.
- Public access roads and machinery roads – Snow removal will only be undertaken to an established residence or to transport agricultural products, provided the road may be opened with a motor grader. This service will be subject to the availability of the equipment.
- Winging snow from the shoulders and other maintenance will have second priority.

The goal for winter maintenance for gravel roads is to remove snow from the road surface after accumulations reach approximately 5 cm or more. **The basic service level that we strive for is to have the gravel road system maintained to reasonable winter conditions within four days after a snow storm; however, this will vary dependent on the severity and duration of the storm.**

All gravel roads in Lacombe County are designated school bus routes; therefore, they are given equal priority.

Snow removal on private property will not be done. Please visit www.lacombecounty.com (or go to Pg. 21) and search area contractors to view the list of contractors that can be hired for private snow removal.

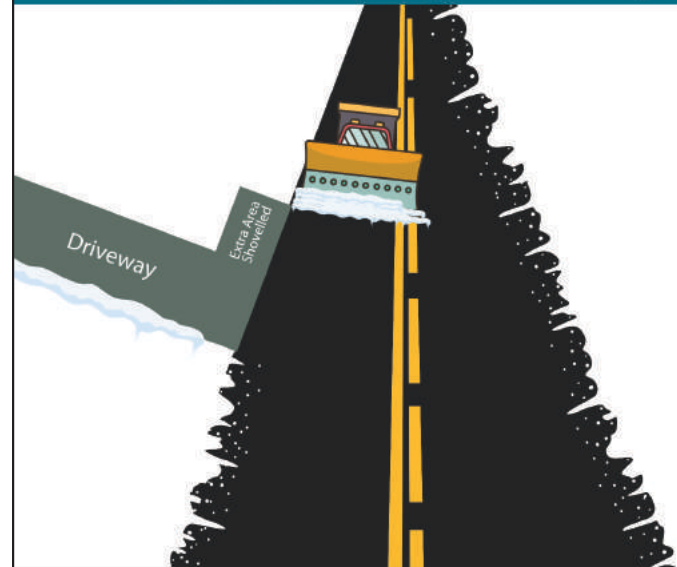
WHEN CLEARING SNOW FROM YOUR PROPERTY, DO NOT PUSH THE SNOW ACROSS THE ROAD. THIS PRACTICE RESULTS IN SERIOUS SAFETY CONCERNS FOR BOTH PASSENGER VEHICLES AS WELL AS LACOMBE COUNTY EQUIPMENT.



LACOMBE
COUNTY

WINTER TIP

When shovelling snow after a major snowfall event, an excellent way you can help the County's graders and also avoid having to re-shovel the snow again is by shovelling an extra area, left of your driveway. This allows the County's graders to push snow into that area, so you don't have to reshovel the area in front of your driveway!



When shovelling, DO NOT push snow to the other side of the road or into the County right-of-way / ditch.

Moving snow into the County right-of-way can: lead to unsafe conditions for motorists and graders; impact the County's ability to efficiently provide snow removal; may cause damage to County roads and equipment or utility infrastructure; and can even cause spring flooding!

The best practice is to shovel snow to the right side of your driveway. This makes it easiest for our operators to move the snow in the direction of plowing.

If you notice a broken or missing sign on a County road, call us ASAP!!

**BROKEN OR
MISSING
ROAD SIGNS?**

LACOMBE
COUNTY

Phone: 403-782-6601
Email: info@lacombecounty.com

Facebook (@LacombeCounty)
Instagram (lacombecounty)
Twitter (@LacombeCounty)

AGRICULTURE

Ag Funding from ALUS & RALP: Come to an info session!!

~ Submitted by Ken Lewis, ALUS Lacombe Coordinator

Everything you wanted to know about ALUS and RALP – all in one place!

What is ALUS? What is RALP? What are they funding? How do I apply? All these questions and more will be answered in a series of community meetings later this winter / early spring.

We are putting the finishing touches together, for some information sessions about ALUS and RALP in the next few months. Stay tuned to the Lacombe County News and social media, for more details.

At these sessions, we will have pre-

sentations about ALUS and RALP, and hear your questions about these two great funding opportunities for farmers and ranchers.

As a teaser: both ALUS and RALP can provide funding to you, for things you do on your farm or ranch that benefit the natural environment. **Check out www.alus.ca and <https://www.alberta.ca/resilient-agricultural-landscape-program>** if you'd like more details.

We're planning to hold 4 identical sessions on 4 different days and times, scattered around the County, in March and early April. You can pick the one that best fits your schedule. The

meetings will be brief and to-the-point, with lots of time for your questions and discussions. You'll leave with a good understanding of how ALUS and RALP work, and how you can apply for funding.

Keep an eye out in future editions of the County News, or on Lacombe County social media, for locations, dates and registration information.

Contact Ken or Jenna Dell by phone or email to let us know you'd like to attend.

- Ken Lewis, ALUS Lacombe Coordinator: 403-505-9038 or klewis@rdcounty.ca

- Jenna Dell, RALP Program Access Liaison: 1-866-310-RALP (7257) or Jenna@ralp.ca



Improving on Farm Management with Technologically Backed Tools



Tips, trends & news from Central AB Co-op Agro Lacombe

~ Submitted by: Jonathan Ericson, Agronomist, BSc. Central Alberta Co-op Ltd

The agricultural industry pursues continual advancement year over year; whether it be through scientific discovery and the improvement of plant genetics and herbicide chemistry, mechanically through new equipment and implements, or financially, the agricultural industry uses the best available data, research and ultimately technology to pursue the ultimate goal of successfully producing higher yields throughout Western Canada. Technology is woven throughout agriculture. Although beneficial in many ways, large scale technological innovations sold and invested in throughout Western Canada, such as self-propelled and unmanned implements, drones, and AI monitored machinery, like image based spot sprayers, require significant financial investment with very little proven return. Technology can both be a hindrance and a benefit. Currently, technology is best employed as a management tool for day to day life and work on farms in Central Alberta. There are several opportunities to take advantage of cheap and readily available technology that can help growers better maintain and manage on farm operations.

Firstly, satellite monitoring and mapping apps like 'Trimble Ag' can be downloaded on a phone or computer and used to better manage field related data and issues. Trimble Ag utilizes satellite monitoring and GPS based systems to give up to date imagery to growers throughout Western Canada. Growers often find value in Trimble Ag as a tool to map out key points found throughout their fields. For example, growers can use Trimble Ag to keep track of sloughs, ditches, weed pressures and other low yielding points

throughout a field. If a grower finds a patch of wild oats in a certain area of their field, they can quickly and easily map out that area using their phone or computer. Furthermore, apps like Trimble Ag create opportunities to better manage crop inputs for future years; growers can optimize their rate of fertilizer placement by mapping high yielding vs low yielding points which can be later accessed when seeding in subsequent years. Ultimately, Trimble Ag offers an opportunity to better manage data relating to field level problems and variances. To a similar extent, weather stations and climate related data can be installed and used to optimize farm management strategies.

Precise weather tracking is a valuable tool growers can employ to better manage farm related operations. Companies like Davis Weather Stations, partnered with phone apps like WeatherLink, offer growers in Western Canada the opportunity to accurately track and monitor weather and climate related events at their exact farm location. Without question, weather cannot be controlled. However, weather tracking apps like WeatherLink can promote better farm management strategies such as optimal chemical application, ensuring that specific rain-fast and heat related chemical concerns are avoided, and optimal harvest timing is achieved.

Additionally, on-farm weather stations allow growers to track valuable data like moisture levels and heat stress throughout a growing season. Similar to the app Trimble Ag, installing a weather station can be utilized to better manage a farm operation. Likewise, the app Trello is a tool that can be employed by growers to efficiently manage day to day chores, responsibilities, and events.

Trello is a phone and computer app employed by companies worldwide to efficiently manage, make note of and organize upcoming events, daily tasks, and other key responsibilities. Trello can be downloaded and shared amongst employees, families and

farms. Once completed, tasks can be checked off and removed from the apps work board. Farms could find value in the use of Trello to keep track of key responsibilities like equipment maintenance, animal feedings/milkings, and field work. Farm responsibilities and tasks can easily be mismanaged if they become disorganized. Trello simplifies daily responsibilities and allows companies to achieve higher levels of organization and efficiency.

To end, the app 'PictureThis' is a tool that could be utilized by growers in Central Alberta to better manage weed related pressures.

Oftentimes, weed pressures/emergence can get out of hand quickly. If specific weeds are unknown or unidentifiable, growers can rely on technology, through apps like 'PictureThis', to accurately identify weed/plant growth in their fields. For example, if a grower does a weekly field check and identifies a new weed related pressure but is unsure of the plant species, they can take a picture of the weed and upload it to their phone app PictureThis. The app will take the uploaded picture of the weed and draw from their data backed plant library to identify what the exact species is. PictureThis allows growers to have confidence in their chemical applications as it provides the opportunity to understand what the exact weed pressures are within a specific field. Furthermore, PictureThis can improve a farms agronomics by ensuring certain chemicals are/aren't sprayed, and ultimately improving crop yield as a result.

Technology can be a useful tool to growers throughout Western Canada when used appropriately. Minimal and low cost technological developments, such as the apps Trimble Ag, WeatherLink, Trello and PictureThis can be used to optimize a farms management, efficiency, and agronomics. These apps can be a useful tool for a grower as they continue to strive for improvements in overall farm level management and production.

AGRICULTURE

ATTENTION

Grain Bag and Twine Recylers in Lacombe County

Are you recycling your agricultural plastics and twine to help the environment?

IT ONLY WORKS IF YOU RECYCLE RIGHT!!

We have found many recycling issues, which have led to twine bags thrown in the garbage (rather than appropriately recycled). Please ensure you are following the proper steps (below).



NO feed bags ~ NO grain totes ~ NO silage plastic ~ NO bale wrap

ABOUT

Grain Bag and Twine Recycling in Lacombe County

Grain Bag Recycling



Details:

This service is offered free of charge to agriculture producers operating within Lacombe County. The grain bags will be rolled and collected on farm site for eventual delivery to a plastic recycling center in Alberta.

Requirements:

- Agriculture producers who request grain bag recycling services must provide one individual on site, capable of assisting the rolling and collection operation.
- Grain bags **MUST BE FREE** of grain, mud, dirt debris, and vermin.
- To ensure used grain bags are eligible for recycling, grain bag collection services should be scheduled within one week of grain extraction.
- Grain bag collection services are offered free of charge.

Twine Recycling



Details:

Producers can pick up Clean Farms Twine Recycling Bags at any Lacombe Regional Waste Services Commission Transfer Site during regular business hours. Twine will only be accepted if it is placed in the Clean Farms Twine Recycling Bag, and then brought to the collection site.

Requirements:

- 1. Shake** – Remove as much debris, snow or ice as possible. Excessively dirty twine may be rejected, or subject to a landfill tipping fee or additional charges at drop off.
- 2. Bag** – Place loose twine in a Clean Farms Twine Recycling Bag and tie bags to close. Please do not knot the twine. Clean Farms Twine Recycling bags are available free of charge at any Lacombe Regional Waste Services Commission Transfer Sites.
- 3. Return** – Return to a Lacombe Regional Waste Services Commission Transfer Site during regular business hours.



WE'RE HIRING!

Weed Inspector/ Sprayer Operator

4-month seasonal (May-August)
Monday-Friday (8:00 AM - 4:30PM)

Full Details

www.lacombecounty.com/careers

Apply before 8AM on February 7, 2024 to
hr@lacombecounty.com



DEADLINE FEB 29: Moisture Deficiency Insurance and Endorsement Programs

The Agriculture Financial Services Corporation is encouraging agricultural producers to enroll in Moisture Deficiency programs

The Agriculture Financial Services Corporation (AFSC) is encouraging agricultural producers to enrol in the [Moisture Deficiency Insurance \(MDI\)](#) and [Moisture Deficiency Endorsement \(MDE\)](#) programs.

MDI is an insurance program where the client insures native, improved, bush, or community pasture. MDE can be purchased along with dryland Hay Insurance. This endorsement uses precipitation information from a network of weather stations across the province to reflect moisture conditions.

MDI and MDE are based on the amount of precipitation that falls at the selected weather stations for the months and monthly weighting during the insurance period selected. Losses are paid based on the accumulated precipitation at the

weather stations and not on actual pasture conditions or growth at the farm. AFSC has a map of weather stations and a graph of moisture normals by weather station for 2023 available for review.

An MDI and MDE payment history calculator is also available.

Applications can be made by creating or logging into your AFSC Connect account. The last day to apply for, make changes to, or cancel MDI or MDE applications for the 2023 growing season is February 29, 2024.

To learn more about Moisture Deficiency Insurance, please use Live Chat on www.AFSC.ca or AFSC Connect, call the Client Care Centre or contact your preferred AFSC branch office.



To book grain bag collection or further questions regarding agriculture plastics or twine recycling, please call 403- 782-8959.

SUBDIVISION & DEVELOPMENT ACTIVITY

Do you have questions about subdivision or development activity?

Contact Us:

Lacombe County Planning Services
(403) 782-8389
planning@lacombecounty.com

Dale Freitag
Director of Planning Services

Cajun Paradis
Senior Planner

Natasha Wright
Planner / Development Officer

Nicklas Baran
Planner / Development Officer

Kerrie Taylor
Economic Development Officer

Allison Noonan
Planning Services Administrative Assistant

Daniella Gonzalez
Planning Services Receptionist

December 1, 2023 to December 31, 2023

Development Applications Received

No.	File No.	Applicant	Legal Description	Proposed Development	Decision <i>(otherwise pending)</i>
1	185/23	Travis Rundell	NW 7-40-23-W4M	Home Based Business, Major	Approved
2	186/23	Paul Den Oudsten	Pt. SW 16-41-26-W4M	Sign <i>(Central Alberta Pallet Supply)</i>	Approved
3	187/23	Jim Sturgeon	Lots 11-13 Block1, Plan 7519AI <i>(Hamlet of Mirror)</i>	Storage Shed	Approved
4	188/23	Rhonda & Gladys Stelter	Unit 112 Condo Plan 142 2139 <i>(DeGraff's RV Resort, Gull Lake)</i>	Modular Home	Approved
5	189/23	Myles & Valerie Nelson	SW 2-40-23-W4M	Dwelling, First <i>(Replacement Dwelling)</i>	
6	190/23	Ray Schatz	SE 12-41-4-W5M	Dwelling, Second <i>(Existing Residence)</i>	Approved
7	191/23	James Hepburn	SE 28-40-22-W4M	Dwelling, Single Detached	
8	192/23	Andrew & Erin Davis	Lot E Plan 792 2270 <i>(Burbank Subdivision)</i>	2,400 sq. ft. Detached shop/garage	

Subdivision Applications Received

No.	File No.	Applicant	Legal Description	Proposed Subdivision	Decision <i>(otherwise pending)</i>
9	S-029-23	Trent & Karen Baumbach	SE 8-41-01-W5M	Fragmented Parcel	Approved
10	S-030-23	William & Sandra McLeod	Lot 3 Block 1 Plan 172 0982 <i>(SE 5-40-01-W5M)</i>	Agricultural	Approved



SAVE THE date

2024 SPRING TUNE UP
Health & Safety Tradeshow

March 21, 2024 | 10AM - 3PM
Lacombe Memorial Centre

2024 SPRING TUNE UP

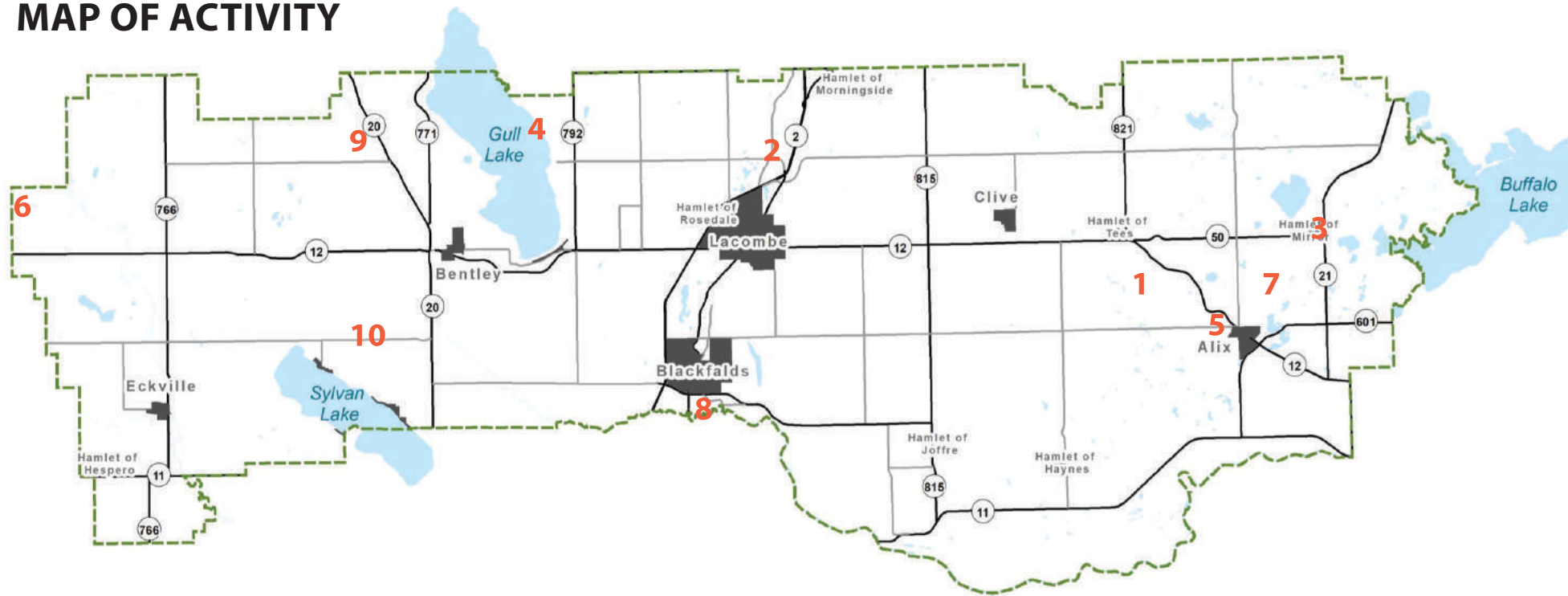
- This year's vendors are providing:
- The Man Van (cancer screening)
 - Animal Care and Safety information
 - Rural Crime Prevention Tips
 - Safety Supplies
 - AND MORE!

Watch for more information in next month's County News, or follow us online (www.lacombecounty.com or our social media) for more details!

FOR MORE INFORMATION ABOUT THE EVENT OR TO SET UP A BOOTH

Jalene Makus | 403-782-8959
jmakus@lacombecounty.com

MAP OF ACTIVITY



Maintain a Safe Following Distance (*The 3 Second Rule*)

No one likes to be tailgated, yet millions of people do it every day. Some do it because they are running late or impatient, while others tailgate out of spite or "road rage." Still others follow too closely out of sheer ignorance of its dangers. Tailgating is by far one of the most dangerous habits a driver can pick up. Drivers are at the highest risk of rear-ending a vehicle when they are following less than 2 seconds behind the vehicle in front of them. When drivers have to stop abruptly, tailgaters are often left with little or no time to brake. Following too closely to the vehicle in front of you is asking for trouble, but fortunately there are some ways you can avoid a tailgating accident.

Good Weather - During daylight with good, dry roads and low traffic volume, you can ensure you're a safe distance from the car ahead of you by following the "three-second rule." The distance changes at different speeds. To determine the right following distance, first select a fixed object on the road ahead such as a sign, tree

or overpass. When the vehicle ahead of you passes the object, slowly count "one one thousand, two one thousand, three one thousand." If you reach the object before completing the count, you're following too closely. Making sure there are three seconds between you and the car ahead gives you time and distance to respond to problems in the lane ahead of you.

Inclement Weather, Heavy Traffic, or Night-Time Driving - In heavy traffic, at night, or when weather conditions are not ideal (eg. light rain, light fog, light snow), double the three second rule to six seconds, for added safety.

Poor Weather - If the weather conditions are very poor, eg. heavy rain, heavy fog, or heavy snow, start by tripling the three second rule to nine seconds to determine a safe following distance.

Tailgating - Following a vehicle too closely is called 'tailgating'. Tailgating is an aggressive driving behaviour that is easily mistaken for road rage. Use the three-second rule to avoid tailgating. Most rear end collisions are caused by the vehicle in back following too closely. If someone is tailgating you, move to another lane or turn off the road as soon as possible and allow the tailgating vehicle to pass.



climate trends

and its impacts on farming



[REWATCH THIS WEBINAR](#) | Planning for the 2024 growing season? Check out this webinar featuring Ralph Wright, Manager of Agricultural Meteorology at Alberta Agriculture & Forestry. With over 19 years of experience, Ralph spearheaded the installation of more than 190 weather stations across Alberta's farming regions. Discover how his team's innovative data quality control system and public website provide vital, real-time weather insights.. Don't miss this opportunity to learn from a leading expert in the field!



Look at normal precipitation patterns (1990-2021)



An overview of the 2022 growing season



Web demo to help participants find and add weather data



Uncover climate trends impacting farming via data collected since 1885

SCAN ME



Watch this webinar on the Lacombe County YouTube channel:

<https://youtu.be/bKRkZwg2xHM?si=9v8T88u17wjlb5xs>

UPCOMING WORKSHOPS

LACOMBE COUNTY EFP WORKSHOP

→ FEBRUARY 1ST

LOCATION
LACOMBE COUNTY OFFICE, 40403
RANGE ROAD 27-4 LACOMBE COUNTY

Join us for an in-person Environmental Farm Plan workshop February 1st at Lacombe County Office.
Please bring a laptop or tablet so you can work on your EFP workbook.

Follow the link to register for the workshop: <https://www.eventbrite.ca/e/environmental-farm-plan-workshop-tickets-775865062287?aff=oddtcreator>



1 CREATE ACCOUNT

Please create an EFP account at albertaeefp.com prior to attending the workshop

2 REGISTER

<https://www.eventbrite.ca/e/environmental-farm-plan-workshop-tickets-775865062287?aff=oddtcreator>

3 DIRECT SUPPORT

Work through chapters with technician in real time



RSVP HERE

OR CALL 403-348-2600



AGRICULTURAL EXCELLENCE

SECURING YOUR FARM FUTURE

JANUARY 31, 2024

5:00-7:30 PM

AT THE RADISSON HOTEL, RED DEER, AB

TOPICS TO INCLUDE:

- Redefining Retirement
- Family Fairness and Harmony
- Transition to the Next Generation
- Investing off the Farm
- Wills, Power of Attorney & Personal Directives
- Market Update
- Other!

Sponsored in part by:



→ WATER WELL MANAGEMENT FOR WELL OWNERS



WORKING WELL
Clean water. Well protected.

Understand why it's important to care for and maintain your water well.

Alberta Government
workingwell.alberta.ca

HOSTED BY:



PRE-REGISTER ONLINE:



The key to a safe, secure water supply is proper well management. Learn how at this free virtual workshop.


→ JOIN US. REGISTER ONLINE TODAY.

HOSTED BY: Lacombe County

DATE: March 6, 2024

START TIME: 6:30 PM

PRE-REGISTER ONLINE:
<https://shorturl.at/bHRS4>




Lacombe County & AWES Presents


Tree Planting for Wildlife Habitat

January 30, 2024
Webinar (via Zoom)
6:30PM - 8PM

Tree-planting is a worthy undertaking that can lead to many benefits, including wildlife habitat. Join us for an evening of education and gain access to knowledge and contacts that can help you pursue a tree-planting project for yourself!



To sign up, visit Eventbrite:
<https://Trees4Wildlife.eventbrite.ca> or scan the QR code.



LACOMBE
COUNTY

Follow us online TODAY for current Lacombe County information



LacombeCounty



@LacombeCounty



www.lacombecounty.com

FROM PAGE 3: Rules for Using County Land

Here are some rules you should follow:

1. **Protect the Plants:** Do not cut, mow, or remove plants, trees, or any other vegetation.
2. **No Building Allowed:** You're not allowed to construct or place any structures.
3. **Stick to the Designated Paths:** Keep the OHVs on designated trails.
4. **Leave Nature Alone:** Don't dig or take away natural features from the land.
5. **No Signs or Ads:** Do not attach signs, advertisements, or anything else to trees, fences, or buildings.
6. **Show Respect for Signs and Structures:** Don't tamper with or damage County signs, buildings, or other improvements.
7. **Keep the Area Clean:** Do not dispose of landscaping materials, yard clippings, waste, building materials, topsoil, clay, sand, rocks, or aggregates on these lands.
8. **Responsible Chemical Use:** Do not discard hazardous materials or use pesticides, herbicides, or fertilizers on these lands.
9. **Responsible Waste Disposal:** Pack out any waste you pack in or utilize designated waste bins.
10. **Camping Rules:** Camping is only allowed in areas where signage permits it. Always follow the posted rules and conditions for those areas.
11. **These are Public Lands:** Remember these are public lands. Do not restrict access to others.

By adhering to these rules, we can help preserve the natural beauty of our County lands and ensure that everyone can enjoy them responsibly.



WHAT YOU CAN'T DO ON RESERVE LAND SOME SIMPLE RULES

We want everyone to enjoy our County reserve lands while keeping them beautiful and safe. By adhering to these rules, we can help preserve the natural beauty of our County lands and ensure that everyone can enjoy them responsibly. Here are some easy rules to remember:

1. PROTECT THE PLANTS

Do not cut, mow or remove plants, trees, or any other vegetation.



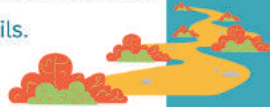
2. NO BUILDING ALLOWED

You're not allowed to construct or place any structures.



3. STICK TO THE DESIGNATED PATHS

Keep OHVs on designated trails.



4. LEAVE NATURE ALONE

Don't dig or take away natural features from the land.



5. NO SIGNS OR ADS

Do not attach signs, advertisements, or anything else to trees, fences, or buildings.



6. SHOW RESPECT FOR SIGNS & STRUCTURES

Don't tamper with or damage County signs, buildings, or other improvements.



7. KEEP THE AREA CLEAN

Do not dispose of landscaping materials, yard clippings, waste, building materials, topsoil, sand, or rocks on these lands.



8. RESPONSIBLE CHEMICAL USE

Do not discard hazardous materials or use pesticides, herbicides, or fertilizers on the land.



9. RESPONSIBLE WASTE DISPOSAL

Pack out any waste you pack in or utilize designated waste bins.



10. NO CAMPING ALLOWED

Camping is only allowed in areas where signage permits it. Always follow the posted rules and conditions for those areas.



11. THESE ARE PUBLIC LANDS

Remember, these are public lands. Do not restrict access to others.



Lacombe County Assessment FAQs

How does Lacombe County calculate my assessment?

In appraisal and assessment theory, there are three approaches when valuing real property.

1. The Sales Comparison Approach – valuations are based on comparisons of actual reported sale prices of other similar properties.
2. The Cost Approach – valuations are based on the “cost” to construct similar buildings within a reasonable time frame. Cost and sale price are NOT necessarily the same: cost is the amount required to produce the item, whereas sale price represents the mutually agreed upon value one might expect to pay in exchange for property.
3. The Income Approach – a property's value is linked/measured by its ability to produce an income. This approach works best for properties

that typically rent (i.e. apartment buildings, warehouses, campgrounds, etc).

In Alberta, for assessment purposes, most properties must meet the valuation standard of Market Value. Lacombe County primarily uses the Cost and Sales Comparison approaches to value properties. Assessments are prepared each year by applying both the available cost and sales data to the specific details of your property. Some properties such as farm land and machinery & equipment are valued using the procedures and rates determined by the Provincial Government.

I did not require a development permit from the County for a particular build or development on my property does this mean it is not assessed and taxed?

Even though Lacombe County may not require you

to obtain a development permit does not mean an assessment is not required to be prepared. Different rules and regulations apply to Planning and Development than to Assessment and Taxation of property. Planning and Development lays out the allowable uses. Assessors record and reflect the actual use and physical condition of all buildings on the property when preparing assessments. Existing properties are reviewed on a cycle to ensure all buildings and improvements are considered in a property's valuation. Properties with new construction, progressive buildings, or changes in use are reviewed annually and development permits help Assessors identify these properties.

COUNCIL HIGHLIGHTS

December 14, 2023

FIVE YEAR BRIDGE PROGRAM AMENDMENT

By resolution of Council, the Five-Year Bridge Program was approved as presented.

POLICY AD(4) INVESTMENTS – REVIEW

Council approved Policy AD(4) Investments. Approved revisions to the policy provide clarification on investment safety, standard of care, eligible investments, asset mix, diversification, safekeeping, and reports.

POLICY RC(6) LIBRARY SUPPORT – REVIEW

Council approved Policy AD(6) Library Support. Approved revisions to the policy provide predictable and stable funding for all libraries receiving Lacombe County Rural Services Grant funding.

ACCOUNTS RECEIVABLE AND UTILITY ACCOUNT WRITE-OFFS

Council approved the write-off of accounts receivables totaling \$111,096.51 and utility accounts totaling \$ 6,579.85. All efforts to collect on the outstanding accounts have been exhausted.

POLICY RC(1) FUNDING APPLICATION – TOWN OF BLACKFALDS

Lacombe County will provide financial support in the amount of \$9,356.00 to the Town of Blackfalds for repairs to pool decking and water pumps at the Abbey Centre. The contribution will be funded from the Recreation and Capital Assistance Reserve.

POLICY RC(1) FUNDING APPLICATION – MIRROR JOLLY SENIORS HALL

Council approved funding up to \$6,381.01 to the Mirror Jolly Seniors Club for electrical and soffit and fascia repairs at the Mirror Jolly Seniors Hall. The contribution will be funded from the Recreation and Capital Assistance Reserve.

BULK WATER FILL STATION

The County Manager was authorized to engage a qualified professional to prepare a preliminary design and cost estimate for the potential construction of a bulk water fill station at the County's remote shop property adjacent to the Hamlet of Tees.

TOWN OF BLACKFALDS/LACOMBE COUNTY ICF MASTER AGREEMENT

Council approved the revised Town of Blackfalds and Lacombe County ICF Master Agreement as presented.

LETTER FROM TOWN OF SYLVAN LAKE REGARDING FIRE PITS ON SYLVAN LAKE

The Town of Sylvan Lake has expressed concern, via a letter to Lacombe County, regarding the environmental effects of fire pits on the ice on Sylvan Lake. By resolution of Council, Councillor Wilson was appointed as the representative of Lacombe County to participate in a meeting with the Town of Sylvan Lake and other affected stakeholders regarding this concern.

GULL LAKE TRAIL

The County Manager was directed to engage with affected and interested parties to develop a trail plan for the Gull Lake Trail in 2025. If such plan is approved by Council, the County shall proceed with trail construction in 2026, pending trail routing being secured.

BYLAW NO. 1398/23 PARKS AND RESERVES MANAGEMENT BYLAW

At the October 26, 2023 Council Meeting, the first two readings of Bylaw No. 1398/23 Parks and Reserve Management were passed. At the request of Council, an article outlining key changes to Policy RC(8) and Council's intent to give third reading to proposed Bylaw No. 1398/23 was advertised in the November County News, on the County website, and on social media; no feedback has since been received.

By resolution of Council, the proposed amendments to Bylaw No. 1398/23 Parks and

Reserves Management were approved. Bylaw No. 1396/23, having been read a first time and a second time, was read a third time and finally passed.

DOW CHEMICAL RAIL YARD EXPANSION LAND USE BYLAW AMENDMENT REQUEST

DOW Chemic is seeking permission to rezone approximately 9.03 acres (3.65 hectares) of their 122.2 acres (49.45 hectare) parcel (Ot. SW 31-39-25-W4M) on Prentiss Road north west of the Hamlet of

Joffre, form Agricultural 'A' District to Heavy Industrial "I-HI" District. This rezoning is being requested to facilitate an expansion of their existing rail yard.

Bylaw No. 1399/23, a bylaw of Lacombe County to amend the Lacombe County Land Use Bylaw No. 1237/17 as it relates to land use designation, received first reading. A public hearing for Bylaw No. 1399/23 will be held on January 11, 2023 at 9:00 a.m.

UTILITY RATE BYLAWS

Council moved first, second, and third readings of the following bylaws:

1. Bylaw No. 1400/23, a bylaw respecting water and wastewater services in the Aspelund Industrial Parks.
2. Bylaw No. 1401/23, a bylaw respecting water, wastewater, and garbage collection services in the Hamlet of Mirror.
3. Bylaw No. 1402/23, a bylaw respecting water services in Lakeview Estates.
4. Bylaw No. 1403/23, a bylaw to regulate the connections and operations of communal sanitary sewage collection systems in the Blissful Beach, Kuusamo Krest, Palm Bay, Yuill, The Slopes, and Westside Country Estates subdivisions.
5. Bylaw No. 1404, a bylaw respecting water and wastewater services in the QE II West Lacombe Business Parks.

PRESENTATION BY BATTLE RIVER WATERSHED ALLIANCE

Catherine Peirce, Executive Director, Battle River Watershed Alliance, provided a presentation regarding key projects, upcoming events, and opportunities for stewardship of the Battle River Watershed Alliance.

PRESENTATION BY GULL LAKE WATERSHED SOCIETY

Lon Kasha, a representative of the Gull Lake Watershed Society, provided a presentation regarding key projects and current initiatives of the Gull Lake Watershed Society.

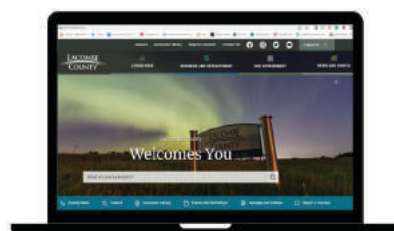
STAY IN THE KNOW!

<https://subscribe.lacombecounty.com/Subscribe> to receive emails on:



News/
Announcements
Events
Council Meetings
Safety Alerts
Construction
Notifications
OR...Subscribe to

individual pages of interest



Council Highlights & Minutes can be found on our website at www.lacombecounty.com/en/our-government/agendas-and-minutes.aspx



Regularly Scheduled Meetings for Lacombe County Council

Committee of the Whole - First Tuesday of every second month at 9 a.m.

Council & MPC - Second and fourth Thursday of every month, starting at 9 a.m..

The public and media are welcome to attend all Council & MPC meetings. An agenda will be posted to the website prior to the meeting.

COUNCIL HIGHLIGHTS

January 11, 2024

PUBLIC HEARING BYLAW NO. 1399/23

A public hearing was held for Bylaw No. 1399/23. Bylaw No. 1399/23 is a bylaw of Lacombe County to amend the Lacombe County Land Use Bylaw, Bylaw No. 1237/17 as it relates to land use designation on Pt. SW 31-39-25-W4M and the Dow Chemical Rail Yard expansion.

Following the public hearing, Bylaw No. 1399/23 was given second and third reading and so passed.

DWELLINGS ON AGRICULTURAL 'A' DISTRICT PARCELS

Council received an overview of the feedback received from the community consultations regarding Dwellings on Agricultural 'A' District Parcels that were held in November and December 2023.

By resolution of Council, Administration was directed to draft bylaw changes to the Municipal Development Plan and Land Use Bylaw to allow two dwellings on Agricultural 'A' District Parcels of 10 acres in size or larger. The proposed bylaw changes will be presented for Council's consideration of first reading in February 2024.

PLANNING SERVICES UPDATE

Council received an update on the progress and activities of the Planning Services Department for 2023.

DECEMBER 5, 2023 COMMITTEE OF THE WHOLE MEETING NOTES

The following recommendations from the December 5, 2023 Committee of the Whole Meeting received Council approval:

- The Paid Parking Program Review was received for information. The County Manager was directed to obtain more in-depth data regarding users of the paid parking program for consideration at a future Council meeting.
- The County Manager was directed to prepare a report and recommendation regarding options for future expansion of water servicing to the Blackfalds Joint Economic Area, for consideration at a future Council meeting.
- The Alberta Association of Community Peace Officers (AACPO) presentation was received for information. A representative of the Peace Officer Program, Public Safety, and Emergency Services will be invited to present at a future Committee

of the Whole meeting subsequent to the County receiving the report commissioned by the AACPO on the safety of Community Peace Officers in carrying out their assigned duties.

- The Subdivision Policies presentation was received for information.
- The Community Organizations Property Tax Exemption Regulations presentation was received for information.
- The Pictography presentation was received for information.

CORPORATE BUSINESS PLAN

The Lacombe County 2022-2027 Corporate Business Plan was presented to Council. The Corporate Business Plan identifies specific initiatives that address each of the four strategic goals established by Council and sets out the timelines for completing each initiative. The Corporate Business Plan is intended to be a fluid document and, as such, will be updated annually.

COUNTY MANAGER EVALUATION – ESTABLISH PROCESS AND SET DATE

The annual performance evaluation of the County Manager will be informed by Councillors on an individual basis for compilation and review by the Reeve, Deputy Reeve, and County Manager on February 8, 2024.

OPPORTUNITY TO MEET WITH MINISTER OF MUNICIPAL AFFAIRS

Council will request to meet with the Honourable Ric McIver, Minister of Municipal Affairs, during the 2024 Spring RMA Convention in Edmonton.

CORRESPONDENCE WITH MINISTERS REGARDING TAXATION ON OIL AND GAS DEVELOPMENT

In follow-up to discussions held at the RMA Fall Convention, a letter will be sent to the Honourable Brian Jean, Minister of Energy and Minerals, and the Honourable Ric McIver, Minister of Municipal Affairs, to reiterate Council's concern regarding taxation on oil and gas development.

LETTER FROM MINISTER SCHULZ REGARDING DROUGHT

Council authorized the establishment of a committee, comprised of representatives from all County

departments, for the purpose of developing a Drought Risk Management and Response Plan for Lacombe County. This initiative is in response to a letter from the Honourable Rebecca Schulz, Minister of Environment and Protected Areas, requesting municipal action regarding the current drought conditions in Alberta.

RMA SPRING CONVENTION

Council will attend the 2024 RMA Spring Convention that will be held at the Edmonton Convention Centre March 18 – 20, 2024.

ECONOMIC DEVELOPMENT UPDATE

Council received an update on the progress and activities related to Economic Development in the County.

2024-2026 ASPHALT LINE PAINTING

The County Manager was authorized to award the 2024-2026 Asphalt Line Painting and Other Works tender to 624091 Alberta Ltd. o/a RanN Maintenance Western Division in the amount of \$249,692.14.

POLICY OP(20) BRIDGE MATERIAL SALES – UPDATE

Council approved amendments to Policy OP(20) Bridge Material Sales to increase credit limits for customers who purchase bridge materials on approved credit.

ALIX NATURE TRAIL FUNDING REQUEST

A motion to approve an annual operating grant to the Alix Nature Trail Society in the amount of \$13,000 for the operations and maintenance of the Alix Nature Trail did not receive Council approval.

TOWN OF BLACKFALDS AND LACOMBE COUNTY RECREATION FACILITIES OPERATIONAL COST-SHARING AGREEMENT

Council approved The Town of Blackfalds and Lacombe County Recreation Facilities Operational Cost-Sharing Agreement as presented.

BYLAW NO. 1405/24 LACOMBE COUNTY 2024 RATES AND FEES BYLAW

Council moved first, second, and third readings of Bylaw No. 1405/24 Lacombe County 2024 Rates and Fees.

REMINDER | Ice Fishing Hut Registration



Lacombe County is no longer managing the voluntary Take It Off Program on Gull Lake and Buffalo Lake, as Alberta Environment and Parks has made it mandatory to identify all ice shelters in the province.

All ice fishing shelters that are on the ice for more than 24 hours **must** be labelled (2.5 cm block letters) with WiN number or name and phone

number. **Ice fishing shelters must be removed from the ice by March 31.**

By identifying your ice shelter you help to ensure that all ice shelters are taken off the lake by the end of the ice fishing season. This helps to protect the environment and ensure the safety of anglers and boaters.

More information is in the 2023 Alberta Guide to Sportfishing Regulations at <https://albertaregulations.ca/fishingregs/>.

The future of health care is in Albertans' hands

Alberta's government is launching a series of province wide in-person engagement sessions with health care workers and Albertans to help shape the future of health care.

As part of the government's ongoing efforts to refocus the health care system, Albertans are encouraged to register for one of the upcoming in-person engagement sessions, which start on Jan. 23. These sessions are an opportunity for open conversations about the challenges, solutions and innovations that will help build a stronger health care system.

Collaborating with front-line health care workers, regional partners and Albertans is crucial to creating a health system that better supports workers and improves patient care. The input, experiences and feedback received from Albertans will help create a more effective health care system that is there for Albertans when and where they need it.

"Ensuring Albertans and their families have a health care system that is responsive and reliable is critical. That's why it's so important we have these face-to-face conversations with front-line workers, patients and caregivers about the challenges that exist and how we can build a stronger health care system that serves the current and future needs of Albertans," said Adriana LaGrange,

Minister of Health.

Members of Alberta's government will attend these sessions wherever possible, including Minister of Health Adriana LaGrange, Minister of Seniors, Community and Social Services Jason Nixon, Minister of Mental Health and Addiction Dan Williams, and Parliamentary Secretary for Rural Health Martin Long.

"As we build a system focused on recovery, ongoing engagement will ensure the best care for those facing mental health challenges or suffering from the deadly disease of addiction. Our government will continue to partner with those delivering services for people in need," said Dan Williams, Minister of Mental Health and Addiction.

"These in-person engagement sessions are an important opportunity for Albertans to provide their feedback and first-hand experiences with the health care system. As we shape the future of our health, mental health and continuing care systems, these sessions are critical, and I encourage everyone to participate," said Jason Nixon, Minister of Seniors, Community and Social Services

- Health care workers and members of the public are encouraged to register online for an in-person session in their area.
- Further engagement plans will be announced in the coming weeks. In addition to public sessions, there will be dedicated engagement with Indigenous leaders and other key health care partners.
- Regularly updated information about new and ongoing engagement sessions is available on the government's online "[Shape the way](#)" page.

Minister LaGrange will also be visiting hospitals and acute care facilities across the province throughout this engagement and continuing into the spring. She will hear first-hand from clinical staff and front-line health care workers as she works to identify ways to make both short- and long-term improvements to health care delivery in the province.

QUICK FACTS

- Alberta Health is planning more than 40 in-person engagement sessions starting Jan. 23 and running until

April 2024. A complete list of the locations and schedule is available online.

- Six virtual town halls have been held so far, with about 10,000 participants.
- More than 16,000 health care workers and Albertans have provided feedback through online engagement tools to date.

RELATED INFORMATION

- [Refocusing health care in Alberta](#)
- [Shape the Way - Refocusing Tab](#)

You can find a list of all the engagement sessions, dates and locations at <https://web.cvent.com/event/1b7b0f39-2972-4334-8e6c-11bc266ae3f2/summary>.

These in-person sessions will offer an opportunity for open conversations about the challenges, solutions and innovations that will help shape a more responsive and effective health care system for generations of Albertans to come.

Make sure to register via the link above!

When to call 911? Complaints vs. emergencies

We often get asked, "When should we call 911?" 911 is for police, fire, or medical emergencies when immediate action is required: someone's health, safety or property is in imminent jeopardy, or a crime is in progress. 911 should be called for: Any life-threatening emergency, any crime in progress and for impaired drivers.

Local police stations have complaint lines that can be called if you require police assistance. This number should be used for crimes that have occurred in the past, noise complaints and minor incidents.

For general inquiries and complaints during the day, please call:

- Bashaw RCMP - (780) 372-3593
- Blackfalds RCMP - (403) 885-3333
- Sylvan Lake RCMP - (403)

887-3333

- Rimbey RCMP - (403) 843-2223
- Ponoka RCMP - (403) 783-4471
- Lacombe Police - (403) 782-3279

If you accidentally call 911:

Please stay on the line and advise the operator it was an accident. If a 911 hang-up is received the RCMP will follow-up by finding out who the number is registered to, and calling and sending police officers to your location to ensure you are okay. This process takes up a lot of time, so if you accidentally call 911, stay on the line, or answer the phone when they call back. You will not get in trouble.

Don't program 911 into your speed dial. It only takes a second to dial it and when it's pre-programmed, it's easy to dial accidentally.



WE'RE HIRING!

Parks Lead Hand

Temporary Full Time (maternity leave coverage)
Monday-Friday (7:00 AM - 5:00 PM)

Full Details

www.lacombecounty.com/careers

Apply before 8AM on February 5, 2024 to
hr@lacombecounty.com



AROUND THE COUNTY

HOME SUPPORT SERVICES FOR SENIORS



Home Support is available to eligible seniors needing assistance with light housekeeping in Lacombe, Clive and Lacombe County.

- ✓ Trained & screened Home Support Providers
- ✓ Weekly
- ✓ Bi-weekly
- ✓ Monthly

Did you know you may qualify for reimbursement up to \$1300 a year for housekeeping. Ask us how.

Contact Lacombe & District FCSS: (403) 782-6637
Or Clive FCSS (Tuesdays, Thursdays) (403) 784-2020

Services Offered

- Laundry
- Kitchen
- Bathrooms
- Living Rooms
- Dusting
- Mopping
- Vacuuming
- Meal prep assistance

Supported by:

LACOMBE COUNTY

Did you know?
County residents within 20 km of Lacombe can book the bus for errands & medical appointments.

Please call 403-782-6637 for more information or to reserve your spot

CONNECT

Experience the beauty of Gull Lake Centre.

Gull Lake Centre is designed with event flexibility in mind.

Our incredible facilities and amenities can be used by groups from 20-250 people. Whether you are planning a conference, retreat, or family reunion, our space is versatile and accommodating.

We are open year round for event rentals! For more information on pricing, specific amenities and rental spaces, visit gulllakecentre.ca/rentals

Blackfalds' Servus Credit Union Public Library

Free memberships for Lacombe County patrons! When signing up provide your legal land description.

Programming

All Age Story Time *All ages*
Toddler Sensory Class *Ages 2-3*
Reading Buddies *Ages 6-10*
Java Minecraft Online *Ages 10+*
Adult Game Nights *Ages 18+*
Canasta Club *Ages 18+*
Dungeons and Dragons tabletop roleplaying games
Multiple Youth & Adults sessions

**For more program information check out our website and social media*

Hours

Sunday	1pm - 5pm
Monday	10 am - 8 pm
Tuesday	10 am - 6 pm
Wednesday	10 am - 8 pm
Thursday	10 am - 6 pm
Friday	10 am - 6 pm
Saturday	10 am - 5 pm

Borrowing

Our library card gives you access to a variety of services, eResources such as eAudio, eBooks, eMagazines & more!

Visit us on our website & social medias

Contact
403-885-2343
www.blackfaldslibrary.ca

Eagle Builders Centre 5302 Broadway Avenue, Blackfalds, AB T0M 0J0

WHAT WE DO

Alix and Area Community Resource Centre

2024 Highlights

~Have you been able to pick up some of the fresh veggies, delivered weekly to the Centre? Available to everyone, typically on Tuesdays. Thank you Pik-N-Pak Produce for the wonderful donations and volunteers who help to make sure veggies are brought to our community every week.

~NEW Addition to the Alix After-School! Programming will now run every Monday... Milkshake Monday will be a part of the regular schedule. For ages 8+, Mon/Tues/Wed/Thurs, 3:00PM-5:30PM.

Join in planned activities daily... *optional*.

~Cooking Connections begins! Sharing ideas and laughs, while working together to assemble jar recipes to take home. Each week 1 meal and 1 dessert/drink will be created. FREE. Must register. Jan 23, 30 & Feb 6, 13, 20, 27
Tuesdays @ 10:30AM-12PM

~Pencil in Feb 19 and plan to be around Alix for all of the Family Day activities. We will host an Artisan Market, Community BINGO, scavenger hunt, snow painting and sculpture contest.

FREE Chili, smores and hot chocolate. WE will be announcing the numerous other community activities soon. Please stay tuned!!!

~In February we will offer Child & Youth Safety Week, Feb 20-23. Watch for more details coming soon on Babysitters Course, Confident Kids, Home Alone and Emergency First Aid.

~We are beginning to ASK for items to include in the Winter Wishes online auction, coming this March. Please keep us in mind and get in touch if you would like to make a donation!

Services Available

- Information & Referral
- Resource Navigation
- Volunteer Services
- Family Wellness
- Meals on Wheels
- Community Services
- Adult Learning
- Alix Food Bank
- Wise Owls

alixmirrorwellness@gmail.com

Follow us on Facebook @AlixandAreaCommunityResourceCentre

www.alixcrc.com

Monday to Thursday **10:00 AM - 4:00 PM**

Closed all statutory holidays
Bay 1, 5008 50 Ave, Alix, AB

403-396-3369



Over The Hill & Loving The View

Seniors Drop In

located in the Town Office 4918-50 Avenue

The Seniors Drop In welcomes everyone 55+ to join us for our regular Tuesday/Thursday afternoons, and/or to take advantage special programming (no charge) on Mondays/Wednesdays

- Mondays 10 to 11 am **Seated Range of Motion Exercises**
- Tuesdays 1 pm **Socialize/cards/games**
- Wednesdays 10:45 to 11:45 **Chair Yoga - light movements**
- Thursdays 1pm **Socialize/cards/games**
- Potluck **last Tuesday each month**

Special Outings - dinner theatres and more. Have an idea? Let us know.

Registration required for
Seated Range of Motion
Chair Yoga

Move your body, make connections & socialize!

Call 403.748.2160

**These programs are open to 55+
You do not need to be a member
of the Drop In to attend**

PARTNERS:

BENTLEY SENIORS DROP IN, FCSS/TOWN OF BENTLEY, EDMONTON SENIORS CENTRE, BRENDA STRAFFORD FOUNDATION/REC@HOME

Lacombe Arts Endowment Grant 2024 Call for Submissions

Open to Artists of all forms and mediums



The Lacombe Arts Endowment Committee is happy to announce grant funding is available to artists looking to further their development, education and training in the arts. There are no age restrictions, and all local artists are encouraged to apply.

**\$2,500
Maximum Per Grant**

Details are available online at www.lacombe.ca or by calling 403-782-1258. Application packages can also be picked up in person at City Hall.

Application Deadline is March 29, 2024

Registration required for
Seated Range of Motion
Chair Yoga

Move your body, make connections & socialize!

Call 403.748.2160

MONDAY
10:15 to 11 am

FREE

WEDNESDAY
10:45 to 11:45 am

Seniors Wellness Mornings 55+ Hosted At The Seniors Drop In

located in the Town Office 4918-50 Avenue

Seated Range of Motion -ROM

Join us for this seated exercise program. Research has shown that range of motion exercise has many benefits, including:

Increased mobility, maintenance, and function of joints. Improved movement efficiency. Increased Independence. Decreased pain.

Chair Yoga

Never worry about falling or about your mobility level again. This class is designed to accommodate for those in wheelchairs, or who are concerned about their balance. The class is stretch-worthy while still being relaxing. It's the perfect balance for those looking for a yoga class that meets their mobility needs.



PARTNERS:

BENTLEY SENIORS DROP IN, FCSS/TOWN OF BENTLEY, EDMONTON SENIORS CENTRE, BRENDA STRAFFORD FOUNDATION/REC@HOME



Interactive Family Programming for ages 0-6

Mondays 9:30 to 11

Literacy & Music

Fridays 9:30 to 11:30

Stay & Play

Location: Basement of Town Office

Contact: Community Services 403-748-2160

Programs Facilitated by: Parenting Proactively 101



Make a SPLASH at the Kinsmen Aquatic Centre

5429 53rd Street

The Gary Moe Sportsplex is home to the Kinsmen Aquatic Centre (KAC). Come take a dip at the Kinsmen Aquatic Centre. We offer a climbing wall, small slide, rope and many special events throughout the year.

What's Happening at the pool:

- Spring program registration is now open
- February break and March break program registration is open
- February is 2 for 1 fitness month (all lane swims and fitness classes are 2 for 1)
- Family Day weekend (Feb 16-19) pass sale (all family memberships are 10% off)
- February Break (Feb 19-23) special programming

For more information on the KAC schedule, pool rentals and advanced courses call 403.782.1278 or visit www.lacombe.ca/pool.

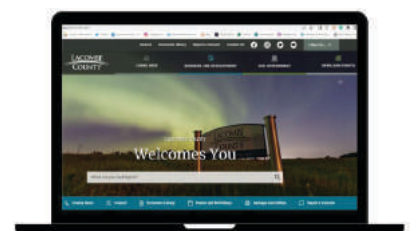
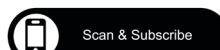


STAY IN THE KNOW!

<https://subscribe.lacombecounty.com/Subscribe> to receive emails on:

News/Announcements Events
Council Meetings
Safety Alerts
Construction Notifications

OR...Subscribe to individual pages of interest



Mary C Moore Public Library
First Edition Book Club
 First Tuesday of the Month at 7pm in the Read & Relax

THE ISLAND OF MISSING TREES ELIF SHAFAK Jan 2	No Two People Jenny Holm Feb 6	POSTCARD ANNE ROBERT March 5	REMARKABLY BRIGHT CREATURES SHELLEY VAN YU April 2
TWO NIGHTS IN LISBON CHRIS PHIVON May 7	THE MEASURE NIRRI EREKA June 4	Lord of the Flies William Golding July 2	THE HUNGER Laurie R. King Aug 6
BLACK CAKE KARMAINE WICKERSON Sept 3	THE PRISON BOOK CLUB Jade Burdett Oct 1	THE HUNGER Laurie R. King Nov 5	Dec 10: 2024 Wrap Up Party

*Dates listed are the 2024 discussion dates for the selected book. New members are welcome!
 Contact Miranda for more information on this club:
 miranda.cl@prlab.ca
 lacombelibrary.com/book-club

HOMESCHOOLER MAKERSPACE & POETRY TEA TIME
WINTER/SPRING 2024

January 12 Makerspace: Gravity & Marble Runs January 26 Poetry Tea Time Langston Hughes	February 9 Makerspace: Building Up February 23 Poetry Tea Time Writing Valentines	March 8 Makerspace: Cardboard Box Creations March 22 Poetry Tea Time Dr. Seuss
April 12 Makerspace: Growing Things April 26 Poetry Tea Time Rhyming Words	May 10 Makerspace: Stop Motion Animation May 31 Poetry Tea Time Winnie the Pooh poems	June 14 Makerspace: Sculpturing

Notes
 Makerspace and Poetry Tea Time Run 10:00AM until 11:30AM
 Registration appreciated but not required.
 Kinsmen Program Room, upstairs in the LMC
 Email Kirstin for more information at kbouwsema@prlab.ca

FOUR EYES FILM SERIES PRESENTS

FALLEN LEAVES JAN 17	SCRAPPER FEB 21	MONSTER MARCH 20	FU APRIL 17
ONE LIFE MAY 15	THE BOY AND THE HERON JUNE 19		

FOUR EYES FILM SERIES BRINGING INDEPENDENT, INTERNATIONAL, INSPIRING AND IMAGINATIVE FILMS TO YOUR TOWN. ONE NIGHT PER MONTH PRESENTED BY MARY C MOORE PUBLIC LIBRARY IN PARTNERSHIP WITH LACOMBE CITY CINEMAS AND FILM CIRCUIT

FILMS SCREEN AT 7PM @ LACOMBE CITY CINEMAS

ADVANCE TICKETS AT THE LIBRARY 2 WKS PRIOR TO EACH FILM \$9 LIMITED TICKETS AVAILABLE AT THE DOOR \$10

tiff **FILM CIRCUIT**

lacombe memorialcentre

The perfect place for people to connect.

Book your upcoming event now!

- training/workshops • meetings
- anniversaries • weddings
- celebrations of life • exercise classes

Visit www.lacombe.ca/lmc or call 403-782-6668 ext 1

Home of Anna Maria's Cafe, Mary C. Moore Public Library, Lacombe & District FCSS and the Lacombe & District Chamber of Commerce.

Need financial assistance with room rentals?
 See if you qualify at lacombe.ca/grants

Blue Feather Award Nominations

Do you know a Bluebird Nestbox Trail operator? Nominate them for our Blue Feather Award!

Each year, Ellis Bird Farm presents a Blue Feather Award to an Alberta bluebird trail operator who has made a significant contribution to bluebird conservation in Alberta.

Nominations forms can be found on our website and will be accepted until May 15, 2024!

Ellis Bird Farm



Bluebird and Purple Martin Partnership

Do you have a bluebird trail or purple martin colony? We'd love to connect with you!

Ellis Bird Farm is looking to partner with Central Albertans who have bluebirds or purple martins and are interested in sharing information and experiences.

If you have these birds on your property and would be interested in signing up for seasonal updates on bird arrivals, populations and general conservation efforts, please email or call us for more details!

www.ellisbirdfarm.ca | info@ellisbirdfarm.ca | 403-885-4477

LACOMBE & DISTRICT GARDEN CLUB - Celebrating 75 YEARS -

Many of us remember planting the pine trees given to us in Grade 3 years ago! In Lacombe, those pine trees were sponsored in part by Hanna seeds and the Lacombe and District Garden Club. This year the L&DGC turns 75!

In honor of this, we would like to celebrate by giving to the community packages of sunflowers for all to plant! Please, also feel free to plant the seeds on the park or work grounds, or in your own gardens! The plants may be left in the ground to help feed the winter birds!

Help us celebrate!! Plant a Sunflower! Feed the Winter Birds!

Plant the sunflower seeds in a sunny location - 10 cm deep, water and watch them grow! Although drought tolerant, the blooms will be bigger and more prolific. We enclose in the package gigantic, orange/rust colored, and teddy bear seeds.

SATURDAY JANUARY 27 2024 6:00PM TO MIDNIGHT

LINCOLN HALL CASINO NIGHT

DELECTABLE PASTA BAR
THRILLING REAL CASINO GAMES
CASH BAR
HAVE FUN - PLAY - WIN PRIZES!

Roulette Wheel
Craps Table
Wheel of Fortune
Poker
BlackJack

A SURE BET FOR A FUN EVENING & SUPPORT YOUR COMMUNITY HALL!

EARLY BIRD TICKETS: \$50
 Tickets after Jan 15th: \$65
 Includes Pasta Bar, & \$50,000 fun money to play Casino Games

TICKETS: [f](https://www.facebook.com/tickettailor) 

[TICKETTAILOR.COM/EVENTS/LINCOLNHALLCOMMUNITYSOCIETY/1099339](https://www.tickettailor.com/events/lincolnhallcommunitysociety/1099339)

BINGO NIGHT!!

Bingo at Haynes Hall
 January 30, 2024
 Doors open at 6:30 p.m.



FEBRUARY 2024

Sun	Mon	Tue	Wed	Thu	Fri	Sat
28	29	30 Tree Planting for Wildlife (Page 12)	31 Ag Excellence: Se- curing your Farm Future (Page 12)	FEB 1 EFP Workshop (Page 12)	2	3
4	5	6 Committee of the Whole	7	8 County Council 9AM	9 County News Submission Deadline	10
11	12	13	14	15	16 County News Published	17
18	19 FAMILY DAY (Office Closed)	20	21	22 County Council 9AM	23	24
25	26	27	28	29	MARCH 1	2

Upcoming Events: March 6: Working Well - Water Well Management (Page 12), March 14: Council Meeting, March 21: Spring Tune Up Event, March 28: Council Meeting

Help us promote YOU!



Do you know a **business, person, place or volunteer** you want to see profiled in County News?

Do you have a photograph you want to share?

If so, email **communications@lacombecounty.com** with your ideas, photographs or stories.

We'd love to hear from you!

Proudly Maintaining Your Highways
Counties: Lacombe | Ponoka | Red Deer | Wetaskiwin
Report road conditions 24/7
1 877 875 3263

Lacombe County Directory

RR3, Lacombe Alberta T4L 2N3 www.lacombecounty.com		
Department Numbers:	Main Office - 403-782-6601	
	Planning Services - 403-782-8389	
	Community Services - 403-782-8959	
	Operations - 403-782-8379	
	Public Works Shop - 403-782-3567	
General		
After Hours Emergency Answering Service	403.357.1210	
Administration Fax	403.782.3820	
Public Works Fax	403.782.5356	
For Service Requests, see our website - or phone the switchboard at 403-782-6601		
Senior Administration		
Tim Timmons, County Manager ttimmons@lacombecounty.com	Call 403-782-6601 to speak with the County Manager or with a Lacombe County Director	
Michael Minchin, Director of Corporate Services mminchin@lacombecounty.com		
Bill Cade, Director of Operations bcade@lacombecounty.com		
Dale Freitag, Director of Planning Services dfreitag@lacombecounty.com		
Dion Burlock, Director of Community Services dburlock@lacombecounty.com		
Council		
John Ireland, Div. 1 (jireland@lacombecounty.com)	Home	Cell
Brenda Knight, Div. 2 (bknight@lacombecounty.com)	403.788.2168	403.550.2168
Barb Shepherd, Div. 3 (bshepherd@lacombecounty.com)		403.340.9724
Dwayne West, Div. 4 (dwest@lacombecounty.com)		403.660.2328
Ken Weenink, Div. 5 (kweenink@lacombecounty.com)		403.350.8014
Allan Wilson, Div. 6 (awilson@lacombecounty.com)		403.506.3735
Dana Kreil, Div. 7 (dkreil@lacombecounty.com)	403.746.3607	403.358.9400

Follow us online, and stay up-to-date on Lacombe County news, events and other information!



Phone | 403.782.6601 Email | info@lacombecounty.com Fax | 403.782.3820

COUNTY NEWS

is published by Lacombe County and printed by CentralWeb.
If you have feedback or story ideas, please contact:

Nicole Plewis, Communications Coordinator
communications@lacombecounty.com
403.782.6601