

# County News

Friday, August 18, 2023 | Volume 8

## Harvest safety reminders from Lacombe County

Harvest work will soon be in full swing, which means local roads and highways will see increased farm traffic. Lacombe County reminds travellers to keep safety at the forefront during fall harvest operations, whether you're driving a van, pulling a camping trailer, or behind the wheel of a combine or semi-truck.

Road safety is a major concern during harvest season. Slow-moving farm equipment will be on roads already busy with summer travellers and commuters alike, increasing the need for everyone to drive safely and considerately.

Back to school season is around the corner, and road courtesy is important no matter where you are driving. We ask everyone to practice patience on local roads – whether you're driving in Lacombe County or elsewhere in Alberta.

The fact is large, slow-moving equipment utilizes County roads in harvest season – which lasts for a number of weeks each year (depending on the year and weather conditions). Drivers need to plan and incorporate extra time into their schedules to compensate for potential delays caused by harvest operations.

During harvest season we ask both agricultural producers, travellers and day-to-day drivers using County roads to stay alert, stay patient and stay safe!



### Harvest Safety Tips (from Alberta Agriculture & Forestry)

- Ensure safe transport of equipment on public roadways.
- Be aware of motorists.
- Follow all rules of the road.
- Ensure all lights and reflectors are in place and in good working order. A slow-moving vehicle emblem should be in place and visible from the rear.
- Return equipment to transport mode to make it as narrow as possible.
- Check your route before transport to ensure equipment fits safely under power lines and over bridges or culverts that need to be crossed.

## Lacombe County Tax Deadline: August 31

Tax payments are payable to Lacombe County no later than August 31, and can be made using one of the following options:

- **By mail to:** Lacombe County, RR3, Lacombe, AB T4L 2N3
- **Mailed payments** must be postmarked by Canada Post no later than August 31st of the current year. If the postmark is illegible or missing, the actual date of receipt by Lacombe County will apply.
- **In Person:** At the County Office (40403 Rge Rd 274, Lacombe County, AB) during office hours.
- Deposited in the envelope mailbox located at the road entrance to the County office (Do not submit cash).
- **Electronically:** Through electronic payment methods, including internet banking and for businesses, electronic funds transfer (EFT). Funds must be received in the County's bank account no later than August 31st.
- **By Credit Card:** visit [www.lacombecounty.com](http://www.lacombecounty.com) and pay through OptionPay, a secure third-party site, to

make payment by credit card. Please note that there is a fee for this service. Lacombe County does not receive any of the credit card fees.

- **Tax Installment Payment Plan:** Those enrolled in the County's tax installment plan (TIPPs) will see their payment adjusted to reflect the new tax rates for 2022 on their next monthly payment.

The above due date and penalties DO NOT APPLY to ratepayers enrolled in the Tax Installment Payment Plan (TIPP), which allows property taxes to be paid on a monthly basis instead of one single payment. Application forms for enrollment are available at the Lacombe County Administration office or on the Lacombe County website.

Property owners who miss the tax payment deadline will have a 6% penalty applied on September 1 on the outstanding taxes owing. An additional 10% penalty will be added on December 1 for all taxes remaining unpaid after November 30.

## What's Inside

- 2 **GRAND OPENING** | Burns Nature Park
- 2 **Tax Deadline Reminder:** Aug. 31
- 3 **PUBLIC HEARING** | Kuusamo Krest
- 3 **BOARD MEMBERS** | Subdivision & Development Appeal Board
- 4 **Railway Safety**
- 5 **Mirror Corner:** Upcoming meetings for community boards
- 6 **Winter storage permits**
- 7 **Sandy Point Trail complete**
- 8-11 **Agriculture News**
- 12-13 **Subdivision & Development & Map**
- 14 **FAQs - Tourist Homes in Lacombe County**
- 15 **SEPT 1** | New rules for roadside worker safety
- 17 **Council Highlights**
- 18 **Paid Parking Program reminders**
- 19 **Connex Bus for Lacombe County Residents**
- 20-23 **Around the County: Events & Info**

[www.lacombecounty.com](http://www.lacombecounty.com)

**LACOMBE**  
COUNTY

WHERE PEOPLE ARE THE KEY

Publication Mail Agreement No 43726064

Return undeliverable items to:  
Lacombe County  
RR3, Lacombe, AB T4L 2N3

County News is available to read on our website every month. If you wish to stop receiving County News by mail, email [communications@lacombecounty.com](mailto:communications@lacombecounty.com) with your mailing address and we will take you off our mailing list.





# YOU ARE INVITED



## GRAND OPENING

### BURNS NATURE PARK

FRIDAY, SEPTEMBER 8, 2023

LOCATION: Very west end of Aspelund Road  
(Civic Address: 2019 Township Road 39-4)

12:00 pm  
Free BBQ / Prizes

1:00 pm  
Presentations

1:30 pm  
Park open for exploring

### BURNS NATURE PARK - Context Map






## let's all WORK TOGETHER this harvest season

Stay alert, stay patient, stay safe


This harvest season, make safety a priority. Let's all share the road and drive with care, so that everyone will get home safely.



### A FRIENDLY REMINDER

## TAX DEADLINE: AUG. 31

Combined property assessment and tax notices were mailed in June. If you have NOT received yours, contact the County at 403-782-6601.



Pay your property taxes BY AUGUST 31, and avoid any late tax penalties!  
Learn more at [www.lacombecounty.com/taxes](http://www.lacombecounty.com/taxes).

## Tax Installment PAYMENT PLAN



### Sign up TODAY for the monthly plan.

Contact Lacombe County at (403) 782-6601 or visit [www.lacombecounty.com](http://www.lacombecounty.com) for more details.



### Automatic Budget-friendly Simple Convenient



# Lacombe County is holding a PUBLIC HEARING *and you're invited...*



**Thursday, September 14, 2023  
@ 9:00 am**



**In Person: Lacombe County Office,  
Council Chambers**

Located 2½ miles west of Highway 2 at the intersection of Spruceville Road and Highway 12.



**Virtual Meeting: Zoom or By Phone**

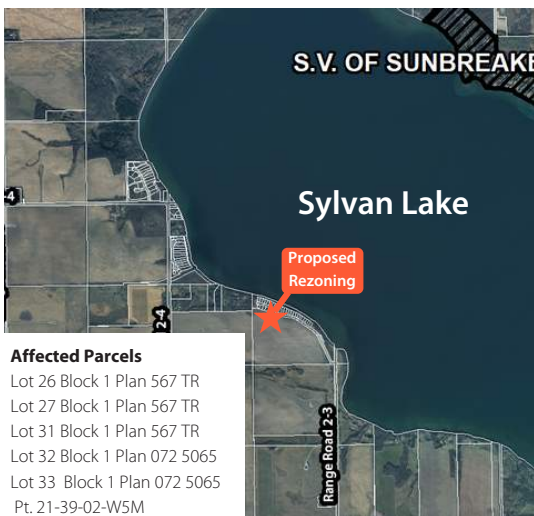
Instructions for accessing the meeting by phone or computer/laptop can be found on the County's website here:

**<https://bit.ly/2UvpnNm>**



**SCAN ME TO  
VISIT WEBSITE  
FOR VIRTUAL  
MEETING  
INSTRUCTIONS**

## CONTEXT MAP



**Affected Parcels**

Lot 26 Block 1 Plan 567 TR  
Lot 27 Block 1 Plan 567 TR  
Lot 31 Block 1 Plan 567 TR  
Lot 32 Block 1 Plan 072 5065  
Lot 33 Block 1 Plan 072 5065  
Pt. 21-39-02-W5M

## BYLAW NO. 1396/23 REZONING REQUEST & BOUNDARY ADJUSTMENT ON Pt. SE 21-39-02-W5M (KUUSAMO KREST, SYLVAN LAKE)

Bemoco Land Surveying Ltd., on behalf of the owners of six properties, is applying to rezone 0.218 hectares (0.539 acres) of Pt. SE 21-39-02-W5M from Agricultural 'A' District to Residential Lake Area 'R-RLA' District. The purpose of the rezoning is to facilitate a boundary adjustment subdivision. The proposed rezoning will not result in the creation of new lots and is intended to change the size of the five existing residential lots.



## HOW DO I COMMENT?



Anyone wishing to comment on the proposed amendment will have an opportunity to do so at a public hearing. If you are unable to attend the hearing, written submissions can be made to the County. You will, however, need to ensure that your comments are received by the County prior to the date of the hearing. Your comments can be sent by:

**EMAIL** [planning@lacombecounty.com](mailto:planning@lacombecounty.com)  
**FAX** 403-782-3820, or  
**MAIL** RR 3, Lacombe AB, T4L 2N3

*All submissions will be public information.*

**For more information, please contact Planning Services or visit the County's website**  
Nicklas Baran, Junior Planner  
Email: [planning@lacombecounty.com](mailto:planning@lacombecounty.com)  
Phone: 403-782-8389  
[www.lacombecounty.com](http://www.lacombecounty.com)

# APPLY TODAY

**Lacombe County invites applications  
from the public at large for  
appointment to the following:**

## SUBDIVISION AND DEVELOPMENT APPEAL BOARD/ ASSESSMENT REVIEW BOARD (JOINT APPOINTMENT)

The Lacombe County Subdivision and Development Appeal Board (SDAB), which is comprised of five members of the public-at-large, is a quasi-judicial board that hears appeals from the decisions of the County's Development Authority and Subdivision Authority.

The Lacombe County Assessment Review Board (ARB) is comprised of the SDAB members and hears and makes decisions on property assessment complaints.

SDAB and ARB members are required to successfully complete board training to maintain their eligibility as qualified board members.

The SDAB/ARB will also hear appeals brought forward under the Weed Control Act as per Section 19 of the Act and Agricultural Pest Act as per Section 14(5) of the Act.

- Applicants should have an interest in 1) municipal planning and development, 2) property assessment, and 3) the administrative tribunal process
- SDAB and ARB meetings are held as required
- Appointments to these Boards are for the period of January 1, 2024 - December 31, 2025
- Chair of the ARB is appointed by County Council

**Persons interested in applying for appointment to these Boards are invited to submit an application providing details of their qualifications and experience by October 4, 2023.** If you are interested in serving as Board Chair for the ARB please indicate this in your application.

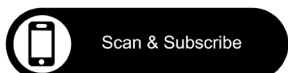
Application forms can be found on the County's website [www.lacombecounty.com](http://www.lacombecounty.com) or at the County Office. For further information, please contact:



**TIM TIMMONS, CLGM  
COUNTY MANAGER  
LACOMBE COUNTY**

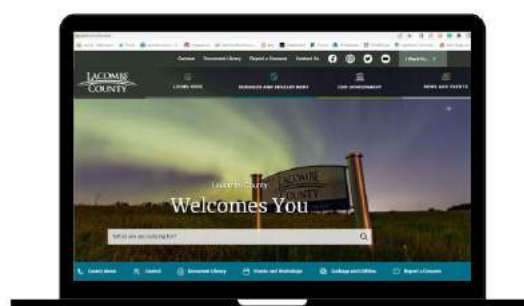
# STAY IN THE KNOW!

<https://subscribe.lacombecounty.com/Subscribe> to receive emails on:



Scan & Subscribe

News/  
Announcements  
Events  
Council Meetings  
Safety Alerts  
Construction  
Notifications  
OR...Subscribe to  
individual pages of  
interest



# SAFETY FIRST

## JOIN US | County looking for paid-on-call firefighters

Lacombe County is conducting a County-wide recruitment campaign for paid-on-call firefighters to serve throughout Lacombe County – specifically in the Alix, Clive, Bentley and Eckville departments.

Specifically, Lacombe County is looking for day-time available, paid-on-call firefighters in those communities. This would make an ideal opportunity for self-employed individuals, individuals who work and live in these communities, or individuals at home looking for a rewarding way to be part of the community.

While often called volunteer firefighters, Lacombe County wants to highlight that these individuals are paid while responding to calls and during training. We expect our firefighters to take time out of their schedules, both for training and when attending calls, and we will reimburse them for their commitment to safety. Some of the basic requirements for volunteer firefighters are:

- To be 18 years of age or older
- To have a valid class 5 driver's license
- To be physically fit
- To live in the response area.

For a full list of the requirements and responsibilities, visit the Lacombe County website: <https://www.lacombe-county.com/en/living-here/fire-services.aspx#Recruitment>.

## Rail Safety Week | Stay safe around tracks

Rail Safety Week will be held in Canada and the United States from September 18-24, 2023.

Every year, more than 2,100 North Americans are killed or seriously injured because of unsafe behaviour around tracks and trains.

In 2021, there were 120 railway crossing collisions across Canada, 14 fatalities and 23 serious injuries.

There were also 60 trespasser incidents, including 41 fatalities and 14 serious injuries.

A motorist is 40 times more likely to die in a crash involving a train than in a collision involving another motor vehicle. Most collisions occur within 40 kms of the motorist's home.

Trains **CANNOT** stop quickly.



**BE  
RAIL  
SMART**  
STOP. LOOK. LISTEN.  
LIVE.

Trains are always much closer than they appear. Look, listen and be ready to stop.

### RAIL SAFETY TIPS

#### 1 • SPEED MISPERCEPTION

Because of their size, trains appear to be much farther away and travelling much slower than their actual speed. Don't be fooled!

#### 2 • TRAINS CAN'T STOP QUICKLY

The average train needs at least 2 km to stop. Trains can stop, but they can't stop quickly!

#### 3 • TRESPASSING

Taking a shortcut across the tracks or being on railway property is illegal, and trespassers can be seriously injured or killed.

#### 4 • WEIGHT RATIO

An average freight train weighs over 5,500 tonnes. Compare that to a car, which weighs about 1.5 tonnes. A train hitting a car is like a car hitting a pop can.

#### 5 • RAILWAY CARS

Stopped railway cars can move at any time. If you're on one or near one when it moves, you could lose a limb — or worse, your life.

#### 6 • TUNNELS AND BRIDGES

Tunnels, bridges, and trestles are designed only for trains. Trespassers can be seriously injured or killed.

#### 7 • OVERHANG

Trains can carry loads that are wider than the railroad cars themselves. They can have chains, straps or other equipment that may extend outside the car. If you are standing too close, you could get hit.

#### 8 • ANY TIME IS TRAIN TIME

Trains do not always run on schedule. They can run at any time, on any track and come from either direction.

#### 9 • CN POLICE NUMBER

Together we can help save lives! If you witness any unsafe situation near a railroad, please call **1-800-465-9239**.

#### 10 • SAFETY PLEDGE

Act today. Take the pledge at [mysafetypledge.com](https://mysafetypledge.com).

## FIRE PERMIT SEASON

is March 1 - October 31

Do you have a Fire Permit?

**SUBMIT IT ONLINE BEFORE BURNING!**



mobile requests through the website



online Fire Permit Request

Fire permits can also be requested over the phone (403-782-6601) or in person at our office.



# MIRROR CORNER

## Upcoming Meetings for Mirror groups

### MIRROR REC SOCIETY (COMMUNITY HALL)

The members of the volunteer society wish to inform the community of our upcoming meeting Aug.,31/23 and wish to invite any one that would either be interested in becoming a member or might like to help out when community events are planned such as our kids events.

**AUGUST 31, 2023  
7:00 PM  
Mirror Community Hall**

We hope you can join us!

Thank you Hall Volunteer members

### MIRROR ASSOCIATION (BALL DIAMONDS, CAMPGROUND AND SKATING)

The volunteer association members would like to invite anyone interested in learning more or becoming involved in the group's responsibilities to please come out and take part in the meeting.

**AUGUST 30, 2023  
7:00 PM  
Skating Rink Building**

We hope you can join us!

Thank you Association Members.



### 2023 Mirror Dog Tags

A license is required for all dogs in Mirror. After February 28, 2023, the cost increases to \$30 for an altered dog and \$50 for an unaltered dog. For more information, please call (403) 782-6601 or visit [www.lacombecounty.com/en/living-here/animal-control.aspx](http://www.lacombecounty.com/en/living-here/animal-control.aspx).

Lacombe County will issue a tag for each dog, which must be attached to a collar worn by the dog at all times. Lacombe County Enforcement Officers will do checks to ensure compliance.

If you would like to report a contravention of the Dog Control Bylaw, please call 403-506-9380, or email [info@klassickennels.com](mailto:info@klassickennels.com). \*\*For animal welfare issue please contact the Alberta SPCA at <http://www.albertasPCA.org/>\*\*\*

### Jolly Seniors

Pancake breakfast every second Sunday from 9 a.m.-1 p.m.

### Booking Mirror Community Hall

Call Lisa 403-788-3890 or cell 403-505-3894.

### Friends of the Mirror Library Society/Mirror Library

The Mirror Library would like to remind patrons of the many items available for borrowing. We carry books for everyone, audiobooks, DVDs, games, and puzzles.

**Hours:** Wednesdays 1-7 p.m.  
2nd & 4th Saturday,  
10AM - 2PM

Please like us at: [facebook.com/booksinmirror](https://facebook.com/booksinmirror) for the most up to date information. The Library also has meeting spaces for rent and free Wi-Fi. Please contact us through the Facebook page or email [booksinmirror@gmail.com](mailto:booksinmirror@gmail.com).

### Mirror Royal Canadian Legion Branch 189 - 5015 50th Avenue

Meat Draws Saturday at 4 p.m. General meetings second Sunday at 1 p.m. (unless otherwise posted).

### Mirror and District Museum

Contact [mmuseum@cciwireless.ca](mailto:mmuseum@cciwireless.ca) if you would like to volunteer and for hours of operation

### CN Rail crossing delays

If you experience delays longer than 20 minutes at the Mirror rail yard crossing, call CN Rail at 1-800-465-9239. Follow the prompts and be ready to provide details shown on the crossing signal mast to CN personnel. Transport Canada may be reached at 1-888-463-0521.



# FIRE PITS:

THE DO'S AND DON'TS FOR SAFE BURNING  
IN LACOMBE COUNTY



1. Ensure your fire pit/BBQ is constructed of bricks, concrete block or heavy gauge metal (or other suitable non-combustible material).
2. Be at least 3.3 metres (10 feet) away from buildings, property lines or other materials that could catch fire.
3. Supervise your fire at all times until it is entirely extinguished (this includes hot ashes and smouldering embers)
4. Use proper fuel such as wood, charcoal, manufactured fire logs, fireplace pellets, propane or natural gas.
5. Watch our website or social media pages for fire bans.
6. Keep a pail of water nearby, and use it to extinguish the fire.
7. Be a kind neighbour - ensure your smoke is going UP and not blowing into someone's property

**Questions? Call 403-782-8959 and speak with the County Fire Chief**



# ENVIRONMENT

## Lacombe County Environmental Stewardship Award Now Open

Lacombe County is shining a spotlight on outstanding individuals who exemplify the essence of environmental stewardship. The Environmental Stewardship Award recognizes those who demonstrate an unwavering commitment to conserving and sustaining the environment on their properties within Lacombe County.

The Environmental Stewardship Award nomination process is open to the public, encouraging everyone to put forward deserving candidates who embody the spirit of environmental stewardship. A committee will review nominations and select a recipient based on their contributions. Self-nominations are not permitted. **The nomination period runs from July 15, 2023, to September 15, 2023. Individuals wishing to nominate someone deserving are invited to submit their applications in person or via email to [jnakonechny@lacombecounty.com](mailto:jnakonechny@lacombecounty.com).**

A judging panel will choose the winner of the Environmental Stewardship Award and will receive a well-deserved one-time cash recognition of \$1,500, recognizing their outstanding efforts in environmental stewardship.

### Eligibility

- The nominee must be a resident and practicing environmental stewardship within Lacombe County
- Can only be a recipient of the award once
- Nomination forms need to be submitted before September 15, 2023 and are available on the Lacombe County website: [www.lacombecounty.com/EnvironmentalAward](http://www.lacombecounty.com/EnvironmentalAward).

### About Lacombe County's Environmental Program

The Environmental Stewardship Award aligns with Lacombe County's overarching commitment to supporting residents in their journey toward environmental sustainability. The county takes pride in empowering individuals to make informed decisions prioritizing natural systems, communities, and the well-being of future generations. In 2021, the County introduced the Environmental Community Engagement Program, a comprehensive initiative that replaced the previous Environmental Improvement Grant program. This three-year program encompasses a wetland educa-

tion program, the esteemed Environmental Stewardship Award, and a resident environmental sustainability program.

### Past winners include:

- **2022:** Joan Olafson, who carried forward her father's legacy of being a steward over their home quarter (located seven miles northwest of the City of Lacombe), including 80 acres of wetlands, forest, and spring-fed streams surrounding 74 acres of agricultural land.
- **2021:** Sharon and Rick Wiebe, who completed a number of projects on their property (located south of Blackfalds), including establishing a community garden that uses rainwater and compost from vegetable waste generated by the garden, as well as developing an off-site watering system to isolate cattle away from sensitive areas, planting trees to replace fallen/windblown trees, creating a bird habitat, and landscaping around their property with an emphasis on pollinators.

## NOTICE: RESERVE LAND INSPECTIONS September & October

Lacombe County staff will be conducting inspections of reserve lands throughout the County in the months of September and October.

Inspections are completed to ensure the use and management of County reserves remains consistent with [Policy RC\(8\): Use and Management of County Reserve Lands](#).

## REMINDER: Winter Storage permits required on reserve lands

The storage of select, seasonal items, may be authorized on County reserve lands from September long weekend (Sept. 2/23) to May long weekend (May 18/24). Winter storage may proceed in locations where the integrity of the environment is not compromised.

Items approved for storage must have a unique identifier affixed or the item(s) may be removed. The storage of ice fishing huts and storage sheds will not be permitted. Stored items without County registration may be removed and disposed of at the County's sole discretion.

**Applications must be submitted on an annual basis for the storage of items through the following application:** <https://www.lacombecounty.com/en/living-here/special-use-of-reserves.aspx>.



Calls or questions may be directed to [jnakonechny@lacombecounty.com](mailto:jnakonechny@lacombecounty.com) or 403-782-8959



# OPERATIONS

## CONSTRUCTION SEASON REMINDER

Please drive carefully and obey ALL signs and speed limits during construction. If you have questions or concerns regarding any project, please contact the Operations department at 403-782-8379.

All notifications and maps can be found at [lacombecounty.com](http://lacombecounty.com).

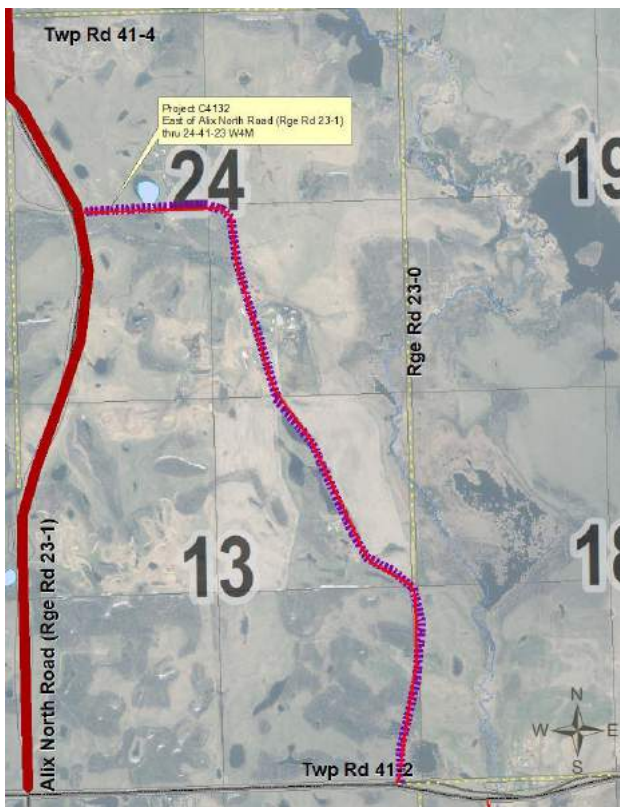
### CONSTRUCTION NOTICE

#### Township Road 41-3.5 (East of Alix North Road)

Notification of Municipal Works for road construction on Township Road 41-3.5, east of Alix North Road (Rge Rd 23-1) thru 24-41-23 W4M

Roadwork will start Monday, August 14, 2023 and take 5-weeks to complete (weather permitting).

Please drive with caution around construction crews, and obey all signs.



## CHECK IT OUT! Sandy Point Trail work complete!



The completion of the regional trail along Range Road 1-2 has been several years in the making and completes an important link from the Sandy Point development to the regional trail along Highway 12A.

The base work for the trail was originally completed by Lacombe County forces in 2013 in conjunction with road construction on Range Road 1-2, to prepare for the eventual paving of the trail. The paving work completed in 2023 was a joint effort by Lacombe County and the Sandy Point development to bring the trail to the boundary of the development. Future phases of the trail are planned through Sandy Point with the intention to eventually connect the resort, beach and campgrounds to the trail network.

## What to know about Lacombe County's Bridge Program

The Lacombe County Bridge Program is a comprehensive infrastructure initiative to improve transportation networks, enhance connectivity, and ensure the safety and sustainability of bridges within the County. There are 145 bridges within the County, addressing the need for robust bridges to accommodate increasing traffic, support economic development, and withstand the challenges posed by natural elements is of utmost importance. Since 2019, the County has replaced more than 20 bridges and assessed existing bridges annually to determine the safest and most efficient solutions.

### Key Objectives

- **Infrastructure Sustainability:** The primary objective of the Lacombe County Bridge Program is to address the needs of the County's road system in timely manner to avoid future issues due to aging bridge infrastructure. By taking a proactive approach in planning for bridge replacement the County strives to ensure that its bridges are managed in a sustainable manner.
- **Safety Enhancement:** Ensuring the safety of residents and motorists is paramount. The program focuses on constructing bridges with advanced safety features and modern safety standards.

- **Connectivity and Regional Development:** The program aims to enhance connectivity between communities, towns, and economic centers within Lacombe County. By investing in bridges strategically, the County can promote regional development and foster economic growth.
- **Environmental Considerations:** Environmental sustainability is critical to the bridge program. Lacombe County is committed to the environment through conducting environmental impact assessments and incorporating best practices in bridge construction and maintenance.

The Lacombe County Bridge Program represents a significant infrastructure, safety, and regional development investment. Lacombe County aims to build a resilient and interconnected community that fosters economic growth and improves the quality of life for its residents and visitors by managing its bridge infrastructure in a sustainable and cost effective manner.

You can contact the County Office at 403-782-8379 or email [operations@lacombecounty.com](mailto:operations@lacombecounty.com) for any questions regarding the Bridge Program or to report any damage or safety issues relating to a bridge structure.





# AGRICULTURE

let's all

# WORK TOGETHER

this harvest season

Stay alert, stay patient, stay safe



**ATTENTION COUNTY RESIDENTS:**

## MOWING PROGRAM

Please be mindful of what is left in the county ditches and move debris completely away or into the fence line. This will help prevent damage to the mowing equipment.

**THESE ITEMS COULD INCLUDE:**

- ✓ Fence Wire
- ✓ Telephone Wire
- ✓ Large Rocks
- ✓ Posts
- ✓ Any material that may cause damage

**THANK YOU!**

[www.lacombecounty.com](http://www.lacombecounty.com)

403-782-8959



LACOMBE COUNTY

## FOR RENT

### Pasture Sprayers

Lacombe County Agriculture Services Has Pasture Sprayers for County Residents to Rent



**RENTAL RATE - \$50.00/DAY**

**DEPOSIT - \$200.00** (deposit refundable when sprayer returned in good condition)

- ❖ Pull type - 400 gallon water capacity, 20 gallon/acre coverage
- ❖ Designed for spraying range and pasture in rough terrain
- ❖ Has additional hand gun system and fence line spraying nozzle
- ❖ Simple to operate
- ❖ Can be pulled by trucks OR tractors



# The importance of fall weed control

There is still time left to control those problem weeds you've been struggling with all summer. Fall presents an excellent time of year to make progress on removing stubborn perennial weeds – especially Canada thistle or pesky dandelions.

With the cooler fall season temperatures coming in, grass finally has a chance to recover from the heat stress of summer. You can encourage good grass competition during this time, which in turn will help choke out any lingering weeds. Fertilizing, aerating, top dressing, reseeding, and proper mowing height can help a lawn setting. With pastures, rotational grazing, proper stocking rates, seeding/overseeding, and nutrient adjustments contribute to a good healthy grass stand. Essentially, any activity that can help encourage your grass to build up a healthy root reserve of nutrients to last it through the winter and

to be well prepared for spring weather.

Another thing to keep in mind as you might be deadheading, pruning or removing built up dead or dying material, is the proper disposal of yard waste. Whether it be weed flowers or seed heads, diseased branches and leaves, or just general plant material, be mindful of how and where you might be transporting these undesirables, as they can cause issues if they aren't dealt with properly.

Lastly, a fall herbicide application can be an extremely effective technique for resolving perennial weed concerns before they become a problem next growing season. Make sure to use a registered, selective herbicide for best results.

If you have any questions, please call the Lacombe County Agriculture department at 403.782.8959.



## GRAIN BIN SAFETY

Most grain bin entrapment and engulfment incidents happen during unloading. Flowing grain acts like quicksand, leading to potential entrapment and suffocation.

### GRAIN ENGULFMENT HAPPENS VERY QUICKLY.

In just four or five seconds, an adult can sink hip-deep in flowing grain and cannot free themselves without help. Entrapment and engulfment also happen when farmers fall through encrusted grain or have encrusted grain fall on them. Most victims do not survive engulfment.

#### PROPER ENTRY AND PREVENTION

Keep grain in good condition to eliminate the need for grain bin entry. Avoid grain entrapment by staying out of grain bins.

If staying out of the bin is not possible, follow safety measures and preplan entry procedures:



Develop safe work procedures that cover confined spaces, lockout tagout, and personal protective equipment (PPE).



Plan for the entry and for potential emergency situations.



Never work alone. Always work with a spotter who does not enter the bin and is trained in emergency response procedures.

#### EMERGENCY PROCEDURES

In the event of a grain entrapment:



Stop the flow of grain by powering down equipment (augers, chutes, etc.).



Call 911 (or direct local emergency number).



DO NOT attempt to rescue an entrapped victim.



Lock out powered-down equipment.



Monitor and reassure the victim that help is on the way.



Have someone wait for help to arrive and direct them to the victim.

Every farm should have an emergency response plan in place before an emergency occurs. This includes first-aid training, equipment, duties and roles and communication during any emergency on the farm, including grain entrapment.

## ALUS Lacombe 2023 Project Tour

By Ken Lewis, ALUS Lacombe Coordinator

On August 2nd, the ALUS Lacombe Partnership Advisory Committee (ALUS PAC) held their 2023 Project Tour. This year, the ALUS PAC chose to look at ALUS projects in the western part of the County, near the Medicine River.

With that in mind, the ALUS PAC invited the Board of the Medicine River Watershed Society to join them on the Tour, along with farmers and ranchers currently enrolled in ALUS Lacombe.



*Excellent conversations and exchanges of ideas took place along the banks of the Medicine River during the ALUS Lacombe 2023 Project Tour.*

The two sites we looked at were both riparian management projects, involving tree and shrub planting and changes to grazing management. It was a great morning, capped off by a wonderful lunch at the Gilby Hall.

**A reminder to all farmers and ranchers in Lacombe County: If you'd like to find out more about ALUS and how it could work on your farm, please contact Ken Lewis at 403-505-9038 or [klewis@rdcounty.ca](mailto:klewis@rdcounty.ca), or check out [www.alus.ca](http://www.alus.ca). Now is a great time to plan your 2024 ALUS Projects.**

**TOP CROP**  
MANAGER

**CASA | ACSA**  
CANADIAN AGRICULTURAL SAFETY ASSOCIATION  
ASSOCIATION CANADIENNE DE SECURITE AGRICOLE

Prepared by Top Crop Manager with assistance from the Canadian Agricultural Safety Association.

Icons made by: freepik.com



# Alberta Government: Water Pumping Program

*Provides assistance to producers in securing adequate water supplies for domestic, livestock or agricultural purposes.*

## OVERVIEW

For a nominal fee, a producer or group of producers can rent pipe and pumping equipment as outlined from the department to fill dugouts or other suitable catch basins from nearby water sources.

- any full-time Alberta agricultural producer experiencing water shortages for domestic and livestock use has priority for equipment use
- equipment and pipe is sent from dispatch locations to the pumping site
- technical assistance is provided for proper operation

Agricultural Water Specialists can also be contacted, if you require

recommendations on constructing or maintaining a safe / secure water supply by phoning: 310-FARM (3276).

## OUTLINE YOUR REQUEST

Be prepared to provide the necessary information to apply for equipment use:

The Water Pumping Program Equipment Rental Application and Contract contains the legal Terms and Conditions and is available on the Alberta Government's website (<https://www.alberta.ca/water-pumping-program.aspx>)

## SUBMIT APPLICATION

Mail your application and payment cheque to:

Water Pumping Program

Irrigation and Farm Water Division  
Room 206, 7000 113 Street  
Edmonton, Alberta T6H 5T6

Website: [www.agriculture.alberta.ca/payment](http://www.agriculture.alberta.ca/payment)

## AFTER YOU APPLY

A coordinator or driver for your area will contact you to coordinate equipment delivery arrangements shortly before your equipment request date.

## FOR CONSIDERATION

Applicants should be aware that a temporary diversion license(s) is usually required to draw water from rivers, streams or permanent bodies of water such as lakes or sloughs.

Applicants are encouraged to contact their local Regional Support Person (Water) of Alberta Environment and

Protected Areas for information on obtaining this license.

## RURAL WATER

There are 151 water co-operatives throughout the province (Alberta Federation of Rural Water Co-operatives). Many formed in the 1960s and 1970s to provide water service to their immediate area, offering advice or technical assistance.

Alberta Environment and Protected Areas is involved in water quality and water licensing issues.

For more information, contact Alberta Agriculture at 310-FARM or go to <https://www.alberta.ca/water-pumping-program.aspx>.

# Drought support: Temporary Livestock Water Assistance



## Program Description

Livestock and poultry producers impacted by water shortage and drought conditions can receive streamlined temporary livestock water assistance through Alberta Environment and Protected Areas (EPA). Producers who have an urgent need for water should contact EPA for support to identify alternative water sources and receive authorization for use under the *Water Act*.

## Program Eligibility

Assistance is available to any livestock or poultry producer who has an urgent need for an alternative water supply for their animals and need assistance in finding an alternative water source.

## How It Works

**Step 1:** Producers in need of support should email their EPA district office and include the details outlined under the "What to include in your email" heading.

A map with district boundaries and contact information can be found on page two. Producers can also call the Water Pumping Program at 780-422-5000.

**Step 2:** Within three (3) business days, an EPA staff member will contact the producer directly to discuss their specific situation.

**Step 3:** EPA staff and producer will work together to identify and assess alternative water sources, and potential impacts to the aquatic environment and other water users.

**Step 4:** Where required, EPA will work with the producer through a streamlined authorization process under the *Water Act* to authorize temporary use of the new water source.

**Step 5:** Once the producer has received their authorization, such as a Temporary Diversion Licence, they can begin using the new water source.

## What to Include in your Email

Producer requesting assistance should include the following information in their email:

- 'Livestock Water Assistance' in the subject line of the email.
- The legal land location(s) of your livestock.
- Number of animals.
- If you currently have a Water Licence under the *Water Act*, and the licence number(s).
- Suggested options for water source (if known).
- Phone number or alternative contact information.

## Alternative Water Sources

Examples of alternative water sources may include:

- Storm water ponds.
- Gravel pits.
- Stock watering dams greater than 2,500 cubic metres.
- Beaver dams or ponds on non-fish bearing water courses.
- Larger rivers or wetlands.
- Municipal bulk watering stations.
- Last polishing cell from a municipal wastewater treatment lagoon.

## Regional Assurance Division Boundaries



## EPA District Office Emails

Boreal District: [aep.waborealregion@gov.ab.ca](mailto:aep.waborealregion@gov.ab.ca)  
Capital District: [aep.wacapitalregion@gov.ab.ca](mailto:aep.wacapitalregion@gov.ab.ca)  
Red Deer District: [waterapprovals.reddeer@gov.ab.ca](mailto:waterapprovals.reddeer@gov.ab.ca)  
Calgary District: [aep.waapprovcalg@gov.ab.ca](mailto:aep.waapprovcalg@gov.ab.ca)  
Lethbridge District: [waterapprovals.lethbridge@gov.ab.ca](mailto:waterapprovals.lethbridge@gov.ab.ca)



## Water Pumping Program

EPA works closely with Agriculture and Irrigation (AGI) to support livestock producers across the province that have been affected by water shortage and drought conditions. One way AGI provides assistance to producers in securing adequate water supplies is through their Water Pumping Program. The Water Pumping Program provides access for producers to pipe and pumping equipment to fill dugouts from nearby water sources.

More information related to the Water Pumping Program can be found at <https://www.alberta.ca/water-pumping-program.aspx>, or by calling 780-422-5000.

## Other Resources

- Temporary Diversions Licences under the *Water Act*: <https://www.alberta.ca/temporary-diversion-licence.aspx>
- Alberta River Basins Website: <https://rivers.alberta.ca/>
- *Water Act*: Water Diversion for Agricultural Uses During Low Flow Conditions: [aep-water-act-water-diversion-for-agricultural-uses-during-low-flow-conditions-2022-04.pdf](https://www.alberta.ca/aep-water-act-water-diversion-for-agricultural-uses-during-low-flow-conditions-2022-04.pdf)
- Farming in dry conditions: <https://www.alberta.ca/farming-in-dry-conditions.aspx>
- Information and resources regarding drought: <https://www.alberta.ca/drought.aspx>





# Where does the next generation fit in agriculture?

*Tips, trends & news from Central Alberta Co-op Agro Lacombe*

The average age of a Canadian farmer is 56 years old. Not to say 56 is old, but as the average age continues to increase, the demographic of farmers gets older. Farmers work hard for everything they acquire, from land and animals to houses and other belongings, so why would they retire if they can keep going. The fact is, no one wants to quit while they are still ahead, but where does that leave the new generation of young adults looking to enter the agriculture industry?

The younger generation often gets the reputation for being the generation of technology. People will tell you "young people are always on their phones," so what if the next generation's technological knowledge and skill was their way into the agriculture sector? Technology is supposed to be the future of the world, in turn making it the future of agriculture. Young people should take advantage of this fact and use it to make opportunities for themselves. There is an ever changing and evolving need within agriculture for more specific skill sets, beginning to revolve more and more around a qualified understanding of technology.

Agriculture oriented colleges and universities are beginning to focus their programs not only on the basics of farming and agriculture, but also on the technol-

ogy that is beginning to come along with agriculture without a second thought. A great place to start for a young person wanting to get into agriculture would be with a program that will further enhance their present knowledge, while also adding to it with what is coming around in the future. Having any past agriculture experience, in combination with a solid education instilling and furthering their knowledge will only benefit them in the long run. Alongside furthering their knowledge with school, furthering their experience and exposure is also a bonus. Many schools and organizations offer clubs, internships, and scholarships to benefit a young person's learning. Exposure and experience will go hand in hand to grow a young person's career and build their skill set to become more specified, opening up even more opportunities.

Some technological additives related to a young person's skills may include exposure to drone use, experience in creating variable rate field maps, or an understanding of automated equipment systems. Drone scouting is being done to save on time and increase efficiency, as it can create a solid look at the field via images and data to be used in further crop planning.

Similarly, satellite imagery such as Sentinel 2 imagery is being used to calculate the Normal Difference Vegetation Index (NDVI) of entire fields within minutes. NDVI is a measure of the colours of light being reflected off of plants, used to monitor plant growth and areas of stress on the field level. The NDVI is then used as an excellent option to create a zone management plan for variable rate technologies, used as seeding or spraying patterns. All these technologies are the way of the future in agriculture, making any experience with them integral to a young person trying to grow their specific skill set. Each agricultural technology plays a role in benefiting all the others they work alongside. Not only within crop related technology, but also livestock related technologies such as automated livestock feed systems or milking robots for dairy cows.

Opportunities to enter agriculture are becoming more rare so everything has to be done with efficiency and intention.

The future of agriculture lies within the next generation, so the more preparation and opportunities to learn, the better equipped they will be to handle anything the industry throws at them. Taking any opportunity to further a young person's knowledge can only benefit the agri-

culture industry in the long run. Creating more specific skill sets, increasing knowledge of agricultural technologies, and exposing the next generation to exactly what the future of agriculture has to offer will create more qualified, passionate individuals who have the same drive to see the agriculture industry thrive as every farmer out there who worked hard for everything they have.

**GRAIN & FERTILIZER STORAGE EVENT**

- GALVANIZED OR SMOOTHWALL?
- FLAT BOTTOM OR HOPPER CONE?
- AERATION? MONITORING?
- WHATEVER YOU DECIDE, WE HAVE WHAT YOU NEED.

**CO-OP AGRO** www.agro.crs



## BE RAIL SMART

STOP. LOOK. LISTEN.  
LIVE.

Trains are always much closer than they appear. Look, listen and be ready to stop.

### RAIL SAFETY TIPS FOR FARMERS

#### 1 • STAY ALERT WHERE FARM FIELDS CROSS TRACKS

Farm crossings often have no warning lights, bells, or signs. While stopped, look in each direction carefully for approaching trains, moving head and eyes to see around obstructions such as mirrors, windshield pillars and implements. When approaching a crossing, open your cab window, turn off radios and fans, remove headsets and listen carefully for oncoming trains.

#### 2 • REMEMBER TRAINS CAN'T STOP QUICKLY

Because of their size, trains appear to be much farther away and travelling much slower than their actual speed. Don't be fooled. Stop safely and no closer than 5 metres from the nearest rail.

#### 3 • KNOW YOUR EQUIPMENT

Some farm machinery isn't easily transported across tracks. Never try to cross with low-slung equipment — it could get lodged in the rails. Make sure there is enough room on the other side of the tracks to fully clear without stopping.

#### 4 • SECURE TOWING EQUIPMENT

Secure hitch pins with a pin key to prevent towed machinery from dislodging over rough farm crossings. Watch wagons and other equipment while crossing to make sure nothing dislodges or falls onto the tracks.

#### 5 • IF YOU GET STUCK, GET OUT

If you stall or get stuck on the tracks, get out of your vehicle immediately and move 30 metres away. Call CN Police or 911 and let them know a vehicle is on the tracks.

#### 6 • CN POLICE NUMBER

Safety is a shared responsibility. If you witness any dangerous or unsafe situations near a railroad, please call **1-800-465-9239**.

## AGREEMENTS IN AGRICULTURE

How to write them and what you need to know!

**DATE: NOVEMBER 16, 2023**

**TIME: 6:30PM - 9:00PM**

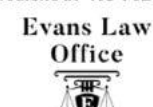
**LOCATION: PENHOLD MULTIPLEX**

(WASKASOO AVENUE, PENHOLD)

Gone are the days of hand shake agreements! Chad Evans with Evans Law will be introducing producers to the basic requirements of what is required in any agreement. These agreements include:

- land rental agreements
- surface lease agreements
- mineral rights lease agreements
- purchase and sale of land agreements

Cost is \$20+GST/participant. Register via Eventbrite (scan QR code or visit [https://agreements\\_in\\_agriculture.eventbrite.ca](https://agreements_in_agriculture.eventbrite.ca)) or call Jalene at 403-782-8959.





SUBDIVISION & DEVELOPMENT ACTIVITY

July 1, 2023 to July 31, 2023  
Development Applications Received

No.	File No.	Applicant	Legal Description	Proposed Development	Decision <i>(otherwise pending)</i>
1	102/23	Chris & Melissa Robak	Block A Plan 8722552 SE 21-39-27-W4M	Home Based Business, Major <i>Renewal, Silver Cove Storage/Warehouse Building</i>	Approved
2	103/23	Lyndon & Judith Davidson	NE-8-40-2-W5M	Dwelling w/Attached Garage and Covered Deck	Approved
3	104/23	True-Kare Holdings Ltd.	Lot 2 Block 1 Plan 932 3195 (NE 15-40-27-W4M)	Agricultural Service Facility <i>Renewal</i>	Approved
4	105/23	Kelly & Teresa Bowles	Condo Plan 102 2165 Unit 7 (Degraff's RV Resort, Gull Lake)	New Modular Home, Shed and Gazebo	Approved
5	106/23	Duane Hecht	NW 3-40-24-W4M	Minor Business and Trade <i>Renewal and Expansion of Duane's Trucking Ltd.</i>	
6	107/23	Russell & Joanne Gwozdz	NE 6-39-24-W4M	Dwelling w/Attached Garage <i>Second Residence</i>	Approved
7	108/23	Integral Incorporated	SE 6-41-24-W4M	Agricultural Service Facility <i>Expansion, Integral Inc.</i>	
8	109/23	DTIC Inc.	Lot 1 Block 2 Plan 042 1375 (Pt. NW 23-40-28-W4M)	Summerland Leisure Park Campground & Mini Golf Course <i>Renewal</i>	Approved
9	110/23	Spencer Gyori	Pt. NW 17-39-28-W4M	Home Based Business, Major <i>Renewal, 4M Energy Inc.</i>	Approved
10	111/23	Ellis Bird Farm Ltd.	NE 25-39-26-W4M	Sign	Approved
11	112/23	Central Alberta Rowing Club	Lacombe Lake Road Allowance (Range Road 27-2) SE-15-40-27-4	Recreation Facilities, Outdoor <i>Renewal, Central Alberta Rowing Club</i>	Approved
12	113/23	Trent & Erin Wagner	SE 19-40-24-W4M	Home Based Business, Major <i>Fun-gi's Family Market</i>	Approved
13	114/23	Tru-Line Contracting Ltd.	Lot 1 Block 1 Plan 962 0524 (NE 15-39-3-W5M)	Dwelling w/Attached Garage and Covered Deck <i>Replacement</i>	Approved
14	115/23	Pilatus Ranches Ltd.	NE 26-41-2-W5M	Dwelling	Approved
15	116/23	Jason Bell	SE 6-41-25-W4M	Dwelling w/Attached Garage and Covered Deck	Approved
16	117/23	Todd Schafer	SW 36-40-27-W4M	Dwelling	

Do you have  
questions about  
subdivision or  
development  
activity?

Contact Us:

Lacombe County  
Planning Services  
(403) 782-8389  
planning@  
lacombecounty.com

Dale Freitag  
Director of  
Planning Services

Cajun Paradis  
Senior Planner

Natasha Wright  
Planner / Development  
Officer

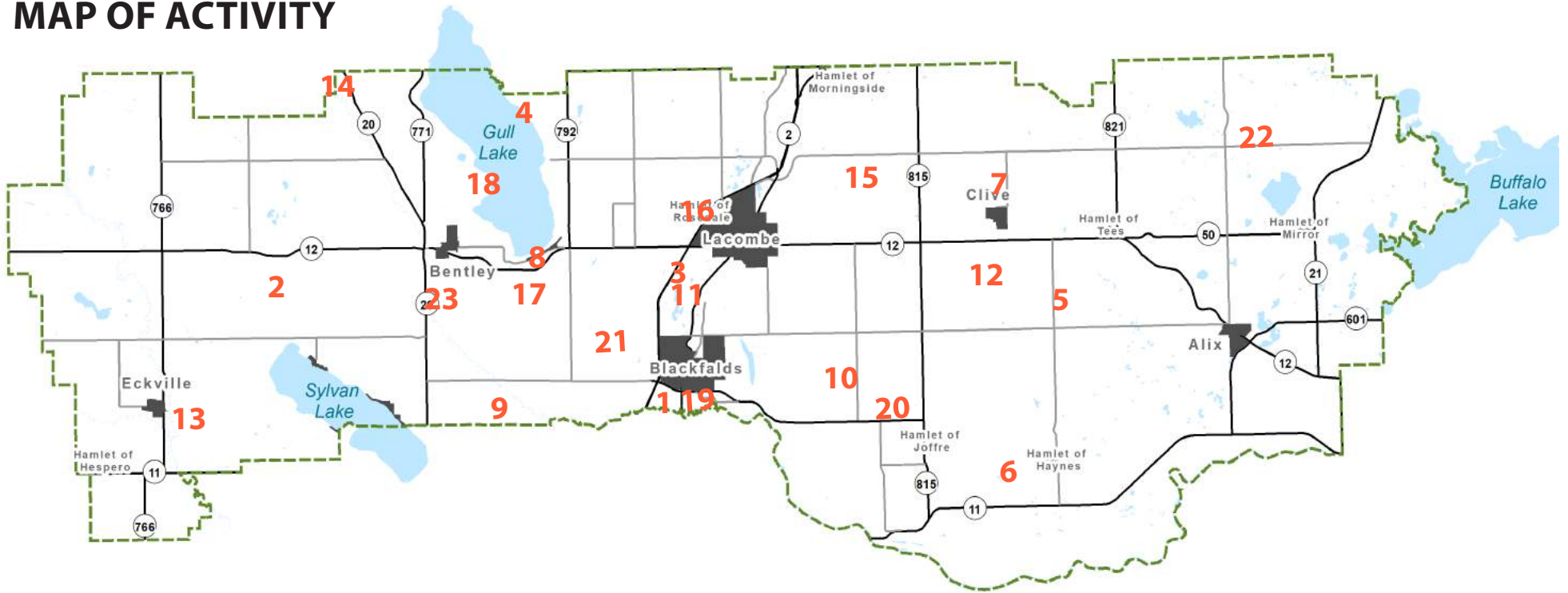
Nicklas Baran  
Junior Planner

Allison Noonan  
Planning Services  
Administrative Assistant

Daniella Gonzalez  
Planning Services  
Receptionist



## MAP OF ACTIVITY



17	118/23	Travis Talsma	SW 16-40-28-W4M	Minor Business and Trade <i>Renewal, Teamworks Fabricating</i>	
18	119/23	Paul Keats	SE 1-41-1-W5M (Sandy Point, Gull Lake)	Sunroom Addition	Approved
19	120/23	DKD Vehicle Wash Supplies	Lot 5 Block 1 Plan 9824780 (SW 23-39-27-W4M)	Rental of bay used for storage of carwash supplies and equipment	Approved

## Subdivision Applications Received

No.	File No.	Applicant	Legal Description	Proposed Subdivision	Decision <i>(otherwise pending)</i>
20	S-014-23	Bradley & Sandra Phillips	Pt. SE 17-39-25-W4M	1st Parcel Out	
21	S-015-23	Nick Leshar	SW 32-39-27-W4M	1st Parcel Out	Approved
22	S-016-23	Bemoco Land Surveying Ltd.	SE 17-41-22-W4M	1st Parcel Out	Approved
23	S-017-23	761714 Alberta Ltd.	SW 15-40-01-W5M	1st Parcel Out	



**SHOW US YOUR  
GARDEN & YARDS!**

Lacombe County is searching for photos of beautiful gardens and yards in Lacombe County.

If you would like to share photos of YOUR garden or yard, and maybe some tips for new gardeners, please contact Nicole at [communications@lacombecounty.com](mailto:communications@lacombecounty.com). Submissions will be shared online and in the County News.

# **ATTENTION:**

## **Notification of Access for County Assessors**

Lacombe County municipal Assessors will be visiting properties throughout the municipality this year to verify property information to ensure accurate and equitable assessments – we appreciate your cooperation in doing so.

Our assessors carry identification and will present it upon request. If you have questions or concerns, don't hesitate to get in touch with us at the Lacombe County Administration Office.



# Planning Services

## Frequently Asked Questions



Lacombe County is a popular destination for tourists during all seasons. While most tourists prefer day visits to areas within the County, others may be in search of higher-end overnight accommodations beyond campgrounds and hotels. This has resulted in increasing demand for tourist homes and bed/breakfast establishments in the County.

### What is a tourist home?

The County's Land Use Bylaw defines a tourist home as a commercial use wherein a dwelling unit is offered for rent to guests for a period of 28 days or less. Tourist homes are commonly listed on short-term rental booking platforms like AirBnB, Vrbo, Expedia, etc.

### What is a bed and breakfast facility?

The County's Land Use Bylaw defines a bed and breakfast facility as an accessory use of a principal dwelling unit in which short term overnight accommodation and limited meals are provided to overnight guests. Bed and breakfast facilities are also commonly listed on web platforms alongside tourist homes, but also includes meals.

### What rules apply to such establishments in Lacombe County?

All tourist homes and bed/breakfast facilities in Lacombe County require a development permit, subject to the approval of the County's Municipal Planning Commission. Lacombe County's Land Use Bylaw outlines various requirements for tourist homes and bed/breakfast facilities to ensure these operations are safe and that adjacent properties are not negatively impacted.

### Can I apply to use my house as a tourist home or bed/breakfast facility?

If you own property in the following districts, you may be eligible to apply for such a use, provided all Land Use Bylaw requirements are met. Please note that both a tourist home and bed/breakfast facility are discretionary uses, meaning that approval is subject to the discretion of the Municipal Planning Commission, based on the suitability of the land for such a use.

### Either a tourist home or bed/breakfast facility

- Agricultural 'A' District
- Hamlet 'H' District
- Hamlet Residential 1 'H-R1' District
- Residential Lake Area 'R-RLA' District

### Tourist home only

- Hamlet Residential 2 Mobile Home 'H-R2' District
- Country Residential 'R-CR' District
- Country Residential Estate 'R-CRE' District
- Residential Conservation (Cluster) 'R-RCC' District
- Recreational Vehicle Resort 'R-RVR' District

If you would like more information on tourist homes and bed/breakfast facilities, feel free to contact Planning Services at [planning@lacombecounty.com](mailto:planning@lacombecounty.com) or 403-782-8389.

## DID YOU KNOW? Special Event Insurance

If you are holding an event at one of our community halls, we recommend taking out special event insurance to protect you from any accidents that could occur.

Weddings | Bridal Showers  
Family Reunions | Sporting events  
Birthday Parties

LACOMBE  
COUNTY



Rental locations are programmed in so renters can go onto the Instant Risk Coverage (IRC) website and select the location they wish to use.

Learn more at: [www.lacombecounty.com/halls](http://www.lacombecounty.com/halls)

**DID YOU KNOW?:** Instant Risk Coverage (IRC) is an online platform that a third-party renter can go onto, complete the information, and get a policy in place for their event. The nice thing about it is that rental locations are programmed in so, a renter can actually just go on and select the location they wish to use. IRC automatically adds Lacombe County as an Additional Insured and a Certificate of Insurance is automatically sent to the County when coverage is placed.

If you're hosting event - wedding, bridal shower, family reunion, etc. - make sure to take out special event insurance to protect yourself from any accidents that could occur.

Learn more at <https://www.lacombecounty.com/halls>.

## Don't get left in the dust!

If you missed the May 12, 2023 deadline, don't worry! You can still get a fall application for Dust Control. If you are interested in having Calcium Chloride in front of your residence or place of business, please contact Cassandra at the County shop at 403-782-3567.



Ratepayer's 2023 cost-shared rate for one application is \$1.72 per lineal meter, to a maximum of 200 meters. **If you require more than 200 meters**, the additional will NOT be cost shared.

Please contact us if you would like to get on the list for fall applications **before August 4, 2023**.

\*\*Note: The application of dust abatement may cause some possible effects, such as loss of vegetation. Lacombe County is not responsible for any claims or damages resulting from the application process.\*\*

If you are interested in finding out more about the County's Dust Control Program, please call Cassandra at 403-782-3567, Ivy at 403-782-8379 or email [operations@lacombecounty.com](mailto:operations@lacombecounty.com)



## Roadside worker safety

Help protect roadside workers on busy Alberta roadways.

### New changes to roadside worker safety rules

Starting September 1, drivers must slow down when passing all roadside workers – just like you do now for police, ambulances, fire trucks and tow trucks.

When you drive in the closest lane to any stopped roadside vehicle with flashing lights, you must move over to the far lane to give workers extra space. If you can't safely move over, you must slow to at least 60 km/h, or the posted speed limit (whichever is lower).

**See flashing lights? Slow down. Move over.**

#### Current rules

- Follow the posted speed in construction zones.
- When passing police, ambulances, fire trucks or tow trucks that are stopped with their lights flashing, slow to at least 60 km/h, or the posted speed limits (whichever is lower).
  - This law applies to the lane(s) immediately next to the stopped vehicle, with it's flashing lights activated.

#### New fines

**Passing roadside vehicles with flashing lights activated.** Starting September 1, 2023, drivers who fail to comply with the new safety rules could receive a \$243 fine and 3 demerits.

- Drivers passing any stopped roadside vehicle with flashing lights activated could also receive speed fines.

#### Passing snowplows

Starting September 1, 2023, drivers must not pass a snowplow when: Drivers who fail to comply with any of these actions could receive a \$324 fine and 3 demerits.

- the view along the side of the snowplow is obstructed
- passing would impede the operation of the snowplow
- the act of passing cannot be done safely

#### Current fines

Speed fines are doubled when construction workers or emergency responders are present. Starting September 1, these fines apply when any stopped roadside vehicle with flashing lights activated are present.

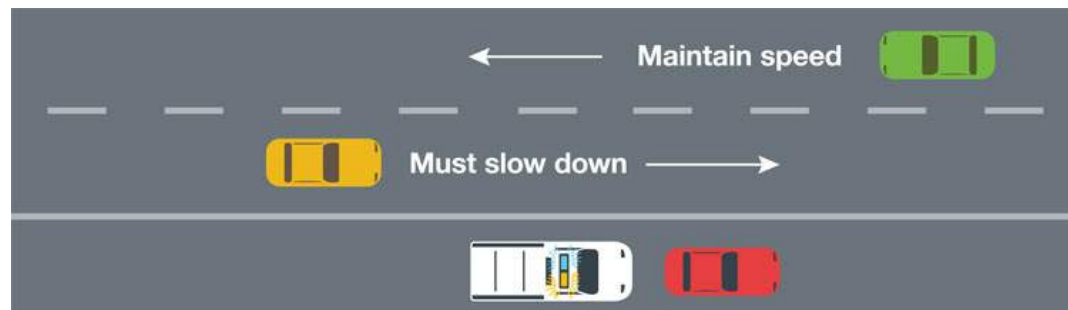
#### Driving reminders

Construction or maintenance zones will have roadway signs in advance to warn motorists that road work is being done. Even if there are no signs reminding motorists that fines will be doubled, your fine could be doubled if workers are present.

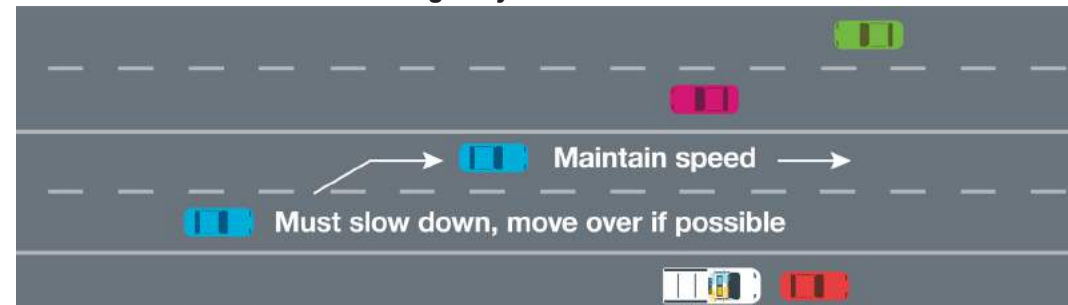
**Flashing lights from emergency response vehicles and other roadside workers will warn you of a problem ahead.**

- When approaching an emergency or a construction/maintenance situation, use caution and slow down.
- Move over to the far lane whenever possible.
- Always be aware that vehicles ahead of you may stop suddenly.
- Obey directions by flag people or emergency workers.
- Avoid watching the emergency and keep focused on driving.
- Always leave plenty of space between your vehicle and other people and equipment parked or being operated at these locations.

#### Actions to take on a single-lane highway.



#### Actions to take on a multi-lane highway.



# FLASHING LIGHTS?

## SLOW DOWN. MOVE OVER.

### New rules to protect roadside workers.

Effective September 1, 2023

When you see police, ambulances, fire trucks, tow trucks, or highway maintenance vehicles with their lights flashing stopped on the side of the road, you must slow down to at least 60 km/h. If you can, move over to the far lane to give workers extra space.

Learn more:

[alberta.ca/RoadWorkerSafety](https://alberta.ca/RoadWorkerSafety)

Alberta

If you notice a broken or missing sign on a County road, call us at 403-782-6601

## BROKEN OR MISSING ROAD SIGNS?

LACOMBE COUNTY

Phone: 403-782-6601  
Email: [info@lacombecounty.com](mailto:info@lacombecounty.com)

Facebook (@LacombeCounty)  
Instagram (@lacombecounty)  
Twitter (@LacombeCounty)



# Distracted Driving Legislation | Distracted Driving law in effect

There is a penalty for distracted driving in Alberta with a fine of \$300 and three demerit points.

The law applies to all motor vehicles as defined by the Traffic Safety Act. It restricts drivers from:

- using hand-held cell phones
- texting or e-mailing (even when stopped at red lights)
- using electronic devices like laptop computers, video games, cameras, video entertainment displays and programming portable audio players
- entering information on GPS units
- reading printed materials in the vehicle
- writing, printing or sketching
- personal grooming (brushing and flossing teeth, putting on makeup, curling hair, clipping nails or shaving)

The law applies to all roads in Alberta. Tickets for distracted driving are issued to the driver of the vehicle and not the registered owner.

Should a driver receive too many demerit points, their driver's licence is suspended. Drivers in the Graduated Driver Licensing (GDL) Program are suspended when they collect eight or more points. Fully licensed drivers are suspended when they collect 15 or more points.

Drivers engaged in any of the identified activities can be charged, even if their driving performance doesn't appear to be affected. If a driver commits a moving violation while distracted, they would receive two tickets – one for distracted driving and one for the moving violation.

Under the Traffic Safety Act, an emergency vehicle includes police service vehicles, fire response units, ambulances and gas disconnection units. Drivers of emergency vehicles are able to use hand-held communication devices or other electronic devices only when acting within the scope of their employment.

Activities that are not specifically restricted under the law are:

- using a cell phone in hands-free mode – the device is not held in the driver's hand and is

activated by voice or a single touch to the device

- using an earphone – if it is used in a hands-free or voice-activated manner
- drinking beverages – coffee, water or pop
- eating a snack
- smoking
- talking with passengers
- listening to a portable audio player – as long as it is set up before you begin driving
- calling emergency services such as 9-1-1 with a hand-held cell phone
- using two-way radios or hand-held radios (also known as CB radios) when a driver is required to remain in contact with one's employer, such as when escorting oversized vehicles or when participating in search, rescue and emergency management situations
- permitting the display screen of the following:
  - a GPS navigation system – as long as the system is affixed to the vehicle and programmed before you begin driving or the system is voice activated. You cannot hold the unit or manually enter information while driving
  - a collision avoidance system
  - a gauge, instrument, device or system that provides information about the vehicle's systems or the vehicle's location
  - a dispatch system for transporting passengers
  - a logistical transportation tracking system that tracks vehicle location, driver status or the delivery of goods for commercial purposes
  - an alcohol ignition interlock device

The most frequently asked question regarding the law



is whether pets are specifically addressed by the law. Here's the answer! In situations where the driver becomes too involved with their pet, police could reasonably argue that the distraction is comparable to the specifically banned activities of reading, writing and grooming and lay a charge.

Also, existing legislation - Traffic Safety Act 115(2)(i) - allows police to charge a driver who permits anything, including a pet, to occupy the front seat of the vehicle such that it interferes with the driver's access to the vehicle controls and the safe operation of the vehicle. Further, Traffic Safety Act 115(2)(j) - allows police to charge a driver who permits anything, including a pet, to cause any obstruction to the driver's clear vision in any direction. We encourage the continued use of these existing provisions.

If a driver violates a new distracted driving provision and an existing provision in the Traffic Safety Act it would be up to the discretion of the officer as to if one or both charges would apply. For the safety of both pets and road users, it is best if pets are secured in an appropriate pet carrier.

## Regularly Scheduled Meetings for Lacombe County Council

**Committee of the Whole** - First Tuesday of every second month at 9 a.m.

**Council & MPC** - Second and fourth Thursday of every month, starting at 9 a.m..

*The public and media are welcome to attend all Council & MPC meetings. An agenda will be posted to the website prior to the meeting.*



Council Highlights & Minutes can be found on our website at [www.lacombecounty.com/en/our-government/agendas-and-minutes.aspx](http://www.lacombecounty.com/en/our-government/agendas-and-minutes.aspx)

## 2023 RMA POST-SECONDARY SCHOLARSHIP

Registration Deadline: August 31, 2023

The RMA established the RMA Post-Secondary Scholarship Program in 1995. A scholarship in the amount of \$1,000 is presented to one successful applicant from each of the RMA's five districts annually.



[Learn More](#)



[www.rmalberta.com](http://www.rmalberta.com)





# COUNCIL HIGHLIGHTS

July 13, 2023

## REIMAGINING RURAL ECONOMIC DEVELOPMENT CONFERENCE

Lacombe County Council will decline attendance at the Reimagining Rural Economic Development Conference due to the date conflict with the October 26, 2023 Council Meeting.

## POLICY RC(1) FUNDING APPLICATION – CITY OF LACOMBE, LACOMBE MEMORIAL CENTRE

As per Policy RC(1), Lacombe County will provide financial support in the amount of \$7,170 to the City of Lacombe for improvements to the Lacombe Memorial Centre Facility. This contribution will be funded from the Recreation Capital Assistance Reserve.

## POLICY RC(1) FUNDING APPLICATION – GULL LAKE COMMUNITY LEAGUE

As per Policy RC(1), Lacombe County will provide funding to the Gull Lake Community League Centennial Park improvements in the amount of \$2,000. This contribution will be funded from the Recreation Capital Assistance Reserve.

## BOYS AND GIRLS CLUB (BGC)/BENTLEY SCHOOL – AFTER-SCHOOL CARE FUNDING REQUEST

Lacombe County will provide financial support in the amount of \$1,000 for start-up funding for the Bentley School/BGC of Wolf Creek After School and School Out Day Programs.

## 2021-2022 LACOMBE COUNTY MUNICIPAL INDICATORS

Council was provided with an overview of the 2021 and 2022 Municipal Indicators results. In the 2021 and 2022 reporting years, Lacombe County met or exceed all indicators, with the exception of Investment and Infrastructure and Infrastructure Age. The County is deemed “not at risk” according to the new performance measures as set out by Alberta Municipal Affairs.

## DISCUSSION TOPICS FOR MEETING WITH RCMP

Council will meet with the RCMP Detachment Commanders of Bashaw, Blackfalds, Ponoka, Rimbey, and Sylvan Lake, on October 3, 2023. Council identified a list of topics for discussion.

## TOWN OF BLACKFALDS/LACOMBE COUNTY REVISED JOINT ECONOMIC AREA AGREEMENT

During recent Town of Blackfalds and Lacombe County IDP/ICF Committee meetings, the Town of Blackfalds has expressed support for Joint Economic Area (JEA) cost sharing. The JEA agreement, amended to include cost-sharing services, was approved by Council.

## CENTRAL RMA ZONE MEETING – LOCALLY SOLD PRODUCTS FOR GIVEAWAY ITEMS

The Central Alberta RMA Zone Meeting, hosted by Lacombe County, will be held on October 6, 2023 at the Track On 2. Attendee giveaways as well as door prizes will consist of County swag items as well as products that are grown or produced in Lacombe County. Council identified a list of local businesses to be considered when purchasing products for the

giveaway and door prize items.

## LACOMBE COUNTY/TOWN OF BLACKFALDS JOINT ECONOMIC AREA SERVICING UPGRADE

The County Manager was authorized to enter into an agreement with the Town of Blackfalds for the construction of a wastewater trunk line to service developments in Lacombe County and the Town of Blackfalds. The County's share of the project, estimated at \$1,272,000, will be funded from the Water/Wastewater Reserve.

## LACOMBE LAKE WATER LEVEL

The management of Lacombe Lake will remain consistent with current practice and Council's 2018 resolution whereby it was resolved that Lacombe County would 1) retain the diversion license for Lacombe Lake; 2) operate the diversion structure in a manner to mitigate spring run-off from Whelp Creek entering the lake, and monitor creek flows downstream to identify any negative impacts; and 3) work with stakeholders to establish the optimal level for the lake within the 2810 foot to 2812 foot licensed levels.

## BURNS NATURE PARK GRAND OPENING

The Burns Lake Natural Area Grand Opening will be held on Friday, September 8, 2023 with a barbeque at 12:00 p.m. and the ceremony at 1:00 p.m. The public is welcome to attend.

## PROPOSED AMENDMENT TO LACOMBE REGIONAL AIRPORT COMMITTEE TERMS OF REFERENCE

By resolution of Council, the Lacombe Regional Airport Committee Terms of Reference were amended to require meetings on a biannual basis, to be scheduled on the third Friday of January and the third Friday of June each year.

## DEVELOPMENT PERMIT APPLICATION 76/23 – SANDY POINT MARINA GAS STATION RENEWAL

Council approved Development Permit Renewal Application No. 76/23 submitted by Delta Land Co. Inc. for the marina gas station at Sandy Point RV Resort on Lot 8 Block 2 Plan 142 2146, Pt. S ½ 12-41-01-W5M, subject to a number of conditions.

## RURAL MUNICIPALITIES OF ALBERTA – MUNICIPAL DEVELOPMENT CAPACITY BUILDING MICROGRANT

As part of the Economic Development in Rural Alberta Plan, the Government of Alberta has provided the Rural Municipalities of Alberta (RMA) with funds to offer microgrants to rural municipalities to help build their economic development capacity. By resolution of Council, Lacombe County will apply for the RMA Municipal Economic Development Capacity-Building Microgrant, in the amount of \$10,000, in accordance with the program application guidelines.

## NEW PAVEMENT MASTER PLAN

The County Manager was directed to secure a Request for Pricing for a New Pavement Master Plan and award the project to the successful consulting firm. The necessary funds to complete the New Pavement Master Plan, with an upset limit of

\$100,000.00, will be funded from the New Pavement Reserve.

## SUMMER VILLAGE OF SUNBREAKER COVE – LACOMBE COUNTY ICF COMMITTEE TERMS OF REFERENCE

The draft terms of reference for the Summer Village of Sunbreaker Cove – Lacombe County ICF Committee were approved by Council.

## LACOMBE REGIONAL WASTE SERVICES COMMISSION - SANDY POINT CAMPGROUND TIPPING FEES

Commencing January 1, 2024, due to the significant volume of waste being generated, the Lacombe Regional Waste Services Commission (LRWSC) will charge tipping fees for solid waste delivered to their waste transfer stations from the Sandy Point Campgrounds (RV Park and Seasonal RV Park). Council discussed options regarding how the tipping fees should be addressed. The County Manager was directed to gather additional information for the preparation of a report and recommendation to be considered at a future Council meeting.

## PROPERTY TAX CANCELLATION REQUEST – TAX ROLL NO. 3903041002

A motion that Lacombe County cancel the \$125,583.03 late payment penalty and defers the 2023 tax penalties to be levied on tax account #3903041002 did not receive Council approval.

## BYLAW NO. 1396/23 REDESIGNATION OF LAND AND BOUNDARY ADJUSTMENT

Bylaw No. 1396/23, a bylaw of Lacombe County to change the zoning of 0.218 hectares (0.539 acres) of Pt. SE-1-39-02-W5M received first reading. A public hearing for Bylaw No. 1396/23 will be held on September 14, 2023 at 9:00 a.m.

## PRESENTATION BY JIM LEBO REGARDING ENCROACHMENT AGREEMENT

Council was provided with a verbal presentation by Jim Lebo, a property owner at Kuusamo Krest, regarding matters related to the unauthorized use and occupation of Reserve Lands as well as his request for approval of an encroachment agreement on Lot 6, Block 1, Plan 567 TR. The presentation was received for information by Council. The County Manager was directed to provide a report and recommendation regarding the encroachment matters at Kuusamo Krest for consideration at a future Council meeting.

## PRESENTATION BY RYAN METZGER REGARDING ENCROACHMENT AGREEMENT

Ryan Metzger, a property owner at Kuusamo Krest, provided a verbal presentation to Council regarding his request to amend the current encroachment agreement for the property at Lot R1, Block 1, Plan 567TR. The presentation was received for information by Council. The County Manager was directed to provide a report and recommendation regarding the encroachment matters at Kuusamo Krest for consideration at a future Council meeting.





# Paid Parking Program

**REMINDER:** the Paid Parking Program is in effect from May - September at the following locations



## Sandy Point Beach

\$3/hour  
OR  
\$15/day for parking at Sandy Point Beach.



## Boat Launches

\$10/day to launch only  
\$20/day launch and park  
Applies to:  
Sandy Point Boat Launch  
Sunbreaker Cove Boat Launch

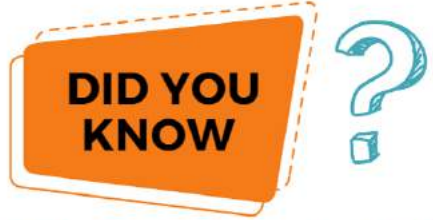


## Annual Pass

- \$120/year Sandy Point Beach Parking
  - \$160/year Boat Launch & Parking
  - \$80/year Boat Launch ONLY\*
- (\*doesn't include parking)

Questions? Prepay? Visit [www.lacombecounty.com/paidparking](http://www.lacombecounty.com/paidparking)

### GOLF CARTS & ELECTRIC SCOOTERS - Road Use



Golf carts and electric scooters are classified as prohibited miniature vehicles under the Traffic Safety Act and Lacombe County Bylaws.

This means that golf carts and electric scooters are strictly prohibited on any highway, including ditches and sidewalks alongside the roadway.



Miniature vehicles may only operate on private property or in relation to electric scooters, where Alberta Transportation has issued a permit with the approval of the municipality.

**Failing to obey these rules may not only result in costly fines, but their operation poses a risk to your safety and others.**

For more information refer to these links:

**GUIDE TO SMALL VEHICLES:**  
MICROSOFT WORD - SMALL\_VEHICLE\_BOOKLET\_FINAL.DOC (ALBERTA.CA)

**TRAFFIC SAFETY ACT:**  
[HTTPS://KINGS-PRINTER.ALBERTA.CA/1266.CFM?PAGE=T06.CFM&LEC\\_TYPE=ACTS&ISBNCLN=9780779838714](https://kings-printer.alberta.ca/1266.cfm?PAGE=T06.CFM&LEC_TYPE=ACTS&ISBNCLN=9780779838714)

**OFF HIGHWAY VEHICLE BYLAW:**  
[HTTPS://WWW.LACOMBECOUNTY.COM/EN/LIVING-HERE/OFF-HIGHWAY-VEHICLE-USE.ASPX](https://www.lacombecounty.com/en/living-here/off-highway-vehicle-use.aspx)

## Beach / Boat Launches Paid Parking Program: PAYMENT OPTIONS



Online parking payments for BEACH and BOAT LAUNCH  
Powered By: **HotSpot** LACOMBE COUNTY  
[support@htsp.ca](mailto:support@htsp.ca) • 1 (855) 712-5888

Lacombe County's Paid Parking Program came into effect on May 1 at the Sandy Point Beach Parking Lot, and the Sandy Point & Sunbreaker Cove Boat Launches.

For details/questions on the parking program, visit <https://www.lacombecounty.com/paidparking>

### PARKING PAYMENT INFO

There are four ways that you can pay for parking:

1. Park with the app: Download the HotSpot Parking App on your smartphone to set up an account.
  - Create an account
  - Tap the "Parking" icon
  - Enter the 4-digit code on the sign
  - Choose your length of stay
  - Pay
2. Park with the Fast Tap signs: Use your smartphone to scan the QR code on the signs in our parking lots and pay
  - Scan the QR code with your

- phone's camera
- Enter your license plate number
- Choose your length of stay
- Pay with Apple Pay or Google Pay
3. If you don't have a Smartphone: You can pay online at home (home computer, laptop, iPad, etc.) before your visit.
4. Lacombe County Administration Building: You can also pay for parking in-person at the Lacombe County Administration Building during regular business hours (Monday to Friday, 8:00 am – 4:30 pm).

**PLEASE NOTE:** There is NO guarantee that you will get a parking spot if you pay for parking from home or at the County office so, please be sure to arrive early.

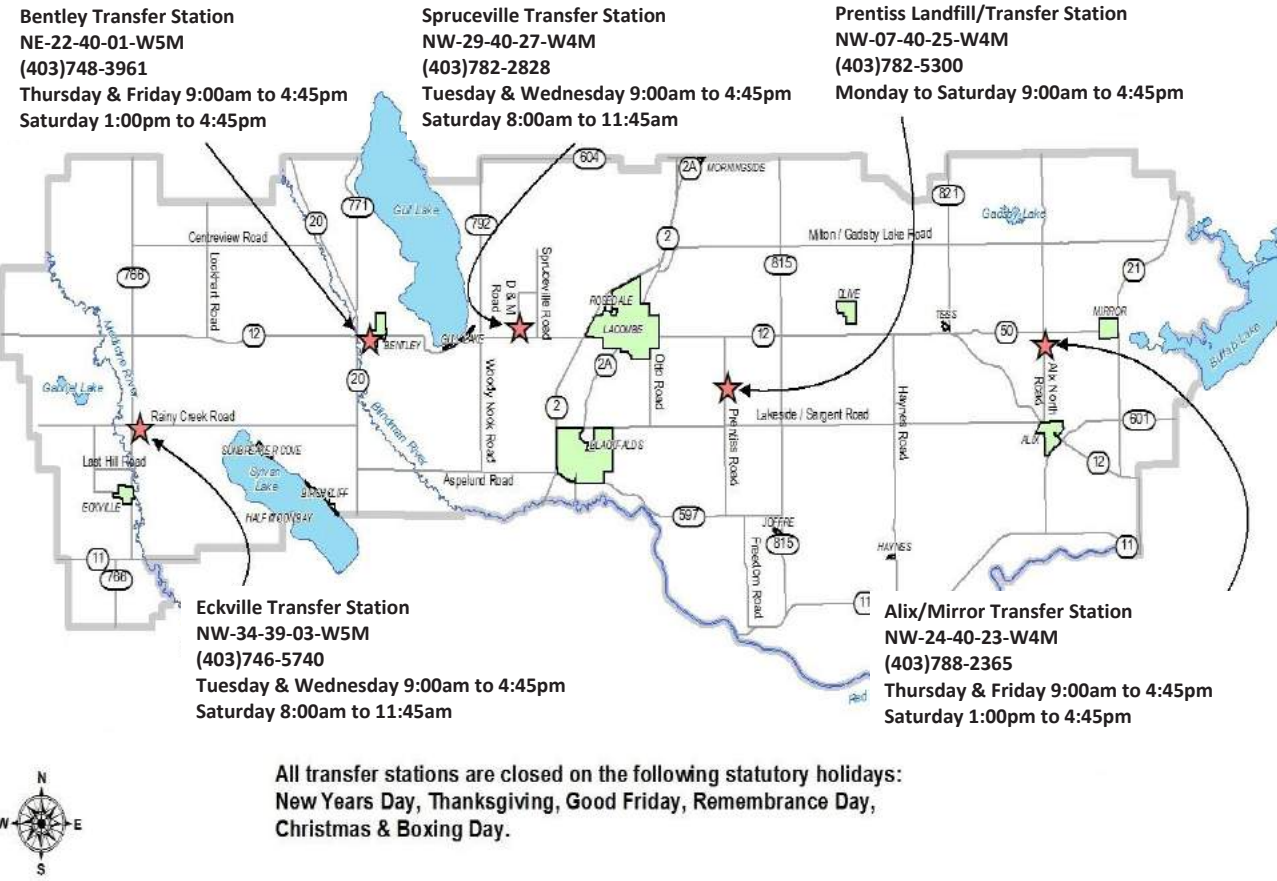
### I'M HAVING TROUBLE PAYING FOR PARKING. WHO SHOULD I CALL?

If you are having problems with the HotSpot app or Fast Tap option, please contact Hot Spot Support Team DIRECTLY at 1-855-712-5888 or email [support@htsp.ca](mailto:support@htsp.ca).

You can also learn more about the company and how Hot Spot works, or find technical support online, at [www.htsp.ca](http://www.htsp.ca).



## Lacombe Regional Waste Services Commission (LRWSC) Transfer Stations Hours of Operation



**JOIN US AT**  
**AgTalk**  
A peer support platform for those who work, live and play in agriculture.  
POWERED BY togetherall

The AgMore Agriculture Foundation • BASF • RBC • THE MCCAIN FOUNDATION

AgTalk is a safe and anonymous space, powered by Togetherall, where producers, ranchers, and anyone connected to the agricultural industry can connect, share experiences, and receive support from others who truly understand.

### What makes AgTalk powered by Togetherall so special?

- **24/7 Monitoring:** AgTalk is closely monitored by experienced clinicians who ensure the platform remains a safe and supportive environment for everyone involved.
- **Peer-to-Peer Support:** Connect with like-minded individuals who live, work, and play in agriculture, sharing insights, stories, and challenges.
- **Safe & Anonymous:** AgTalk provides a judgment-free zone where you can discuss sensitive topics openly, without revealing your identity.

Ready to join AgTalk? It's easy!

Simply visit [domore.ag/agtalk](https://domore.ag/agtalk) to register and become part of this incredible community.

## Lacombe County Residents: DID YOU KNOW?

Lacombe Connex rides are available to seniors and others unable to access regular transportation because of mobility, age or illness. Connex buses are wheelchair accessible.

### WHERE CONNEX TRAVELS:

Connex provides transportation within the City of Lacombe and to Lacombe County rural residents within a 20 km radius of the City of Lacombe.

Please Note: Connex **DOES NOT** provide transportation to/from other municipalities within Lacombe County.

### COST:

County Trips – Local round trip is \$20.00 (from a rural residence to City of Lacombe)

Medical round trips to Red Deer - \$50.00 plus \$7.50 (Local County trip)

Medical appointments outside of Red Deer Region - \$50.00 per hour

Group or non-medical trips - •\$75.00 per hour

Evenings & Weekends on special request and availability.

### BOOKINGS:

Please call 403-786-9000 and leave a message\*\*

### HOURS OF OPERATION:

Monday to Friday  
8:00 a.m. – 4:30 p.m.

**\*\*Bookings should be made at least 24 hours in advance and are based on space and schedule availability.**

For more information on the Connex transportation service, contact Lacombe Connex at 403-786-9000 or 403-782-6637 or visit

<https://www.lacombefcss.net/programs-and-services/seniors/lacombe-connex/>



Lacombe Connex is offered through Lacombe & District FCSS in partnership with the City of Lacombe and Lacombe County.

**RCMP**  
**ONLINE CRIME REPORTING**  
is now available

**Report it online!**

**YOU CAN FILE A REPORT IF:**

- You have lost something that costs less than \$5000
- Someone has stolen something from you that costs less than \$5000
- Someone has vandalized your property or vehicle and it will cost less than \$5000 to repair it
- The crime happened within the jurisdiction of the Alberta RCMP
- Thefts over \$5,000 are accepted from oil, telecommunications, and utility companies

**YOU CANNOT USE ONLINE CRIME REPORTING IF:**

- There is a witness or suspect
- There are lost or stolen items involving personal identity, firearms, licence plates or decals

All crimes reported online to the Alberta RCMP will be followed up with a phone call from a police officer within five business days.

[HTTPS://OCRE-SIELC.RCMP-GRC.GC.CA/ALBERTA](https://ocre-sielc.rcmp-grc.gc.ca/alberta)

Royal Canadian Mounted Police / Gendarmerie royale du Canada

Canada





**ATTENTION: ALL YOUTH AGED 12 - 18**

The Alberta Youth Pheasant Program, sponsored by Red Deer Fish and Game Association and the Alberta Conservation Association, is providing a ONE Day FUN Day to Learn about and experience:

- Pheasant Conservation
- Firearm Introduction
- Clay Pigeon Shooting
- Pheasant Hunts

All equipment will be provided. Bring your own Lunch.

**When:** Saturdays, from Sept 09, 2023 to mid November 2023

**Where:** East of Red Deer about 15 minutes, at Red Deer Fish & Game Habitat Land

**Cost:** Zero if you already belong to an Alberta Fish and Game Association.

OR \$25 Junior Membership to the Red Deer Fish and Game Assn

To buy a Junior Membership go to the following website: [www.reddeerfishandgame.com](http://www.reddeerfishandgame.com)

To Register go to the following website: [www.albertayouthpheasant.com](http://www.albertayouthpheasant.com)

For More Information:

Contact Landon at: [landon.mcinall@reddeerfishandgame.com](mailto:landon.mcinall@reddeerfishandgame.com) or phone 403-505-9560

Contact Ken at: [kenmac4488@gmail.com](mailto:kenmac4488@gmail.com) or phone 403-304-0642

# STAY IN THE KNOW!



<https://subscribe.lacombecounty.com/Subscribe> to receive emails on:

- News/Announcements
- Events
- Council Meetings
- Safety Alerts
- Construction Notifications



OR...Subscribe to individual pages of interest



## Make a SPLASH

at the Kinsmen Aquatic Centre

5429 53rd Street, Lacombe AB

### What's Happening at the pool:

- Fall program registration is Open
- Junior Lifeguard Club registration is open
- September 4 will be Public Swim only from 1:00-5:00 pm

For more information on the KAC schedule, pool rentals and advanced courses call 403.782.1277 or visit [www.lacombe.ca/pool](http://www.lacombe.ca/pool).



CO-HOSTED BY  
THE MARY C MOORE PUBLIC LIBRARY  
Held in the Lacombe Memorial Centre

## Smash Bros. Tournament

**August 26-27**

- \$3,000 in prizes
- Smash Bros. Ultimate
- Smash Bros. Melee
- Splatoon 3
- And many side brackets

Follow us on:

Discord  
Twitter  
@dome\_ssb

Register Here

Brought to you by:

echo energy LACOMBE

## LOCAL AUTHOR VISIT

At Mary C Moore Public Library



**Warren Kreway**

AUTHOR OF

**THE WOLF-DOG WALKING WITH GOD'S CHILDREN**

SUNDAY

**AUG 27**

3:00 PM

READ & RELAX AREA  
OF THE LIBRARY

Warren Kreway is a Lacombe resident, former robotics teacher and school bus driver. He will be at our library to talk about his book and sign copies. No registration required. Light refreshments will be served.

## HOME SUPPORT SERVICES FOR SENIORS



Home Support is available to eligible seniors needing assistance with light housekeeping in Lacombe and Lacombe County.

- ✓ Trained & screened Home Support Providers
- ✓ Weekly
- ✓ Bi-weekly,
- ✓ Monthly

### Services Offered

- Laundry
- Kitchen
- Bathrooms
- Living Rooms
- Dusting
- Mopping
- Vacuuming
- Meal prep assistance

Contact Lacombe & District FCSS:  
(403) 782-6637

Supported by:



More details, including registration, at <https://www.start.gg/tournament/lacombe-dome-anarchy-splatfest/details> (or by scanning the QR code above).



## Bentley Stay & Play

Located in the basement of Town Office

We **WELCOME** all Families/Caregivers  
with children 0-6 and older children on PD days

**Fridays**  
**9:30 to 11:30**

Contact Community Services 403.748.2160  
OR our facilitator Miss Carolyn  
403.704.3315 parentingproactively101@gmail.com

# 2023

## CASINO NOW OPEN!

**THE TRACK on 2 INC.**  
Horse Racing & Event Centre

The Track On 2 - Where you can always bet on the excitement of the race!

## BENTLEY BOUTIQUE

Use west entrance beside bay door.  
Bentley Long Term Care Facility  
4834 - 52 Avenue, Bentley

Open Tues/Thurs 10-12 & 1-3

Items for all  
ages &  
sizes.

Volunteer  
Coordinator  
Sandy  
403.318.0270

Next to new clothing donations welcome!

Bentley Community Services  
403.748.2160

S	M	T	W	T	F	S
						1
2	3	4	5	6	7	8
9	10	11	12	13	14	15
16	17	18	19	20	21	22
23	24	25	26	27	28	29
30	31					

S	M	T	W	T	F	S
		1	2	3	4	5
6	7	8	9	10	11	12
13	14	15	16	17	18	19
20	21	22	23	24	25	26
27	28	29	30	31		

S	M	T	W	T	F	S
					1	2
3	4	5	6	7	8	9
10	11	12	13	14	15	16
17	18	19	20	21	22	23
24	25	26	27	28	29	30

2:15 p.m. MT
5:15 p.m. MT

Note: Post Times may be modified based on weather conditions

The Track On 2 is family friendly inside and out (except for the casino floor), and is located at the intersection of Highway 12 and QEII. During racedays, they have activities for kids of all ages. Attendees will enjoy free admission and parking, as well as lots of options for food.

## GET YOUR KIDS IN HOCKEY

The KidSport Oil Country Hockey Assist Program wants to get kids out of the stands and onto the ice by alleviating the costs associated with playing hockey! Eligible families will get their registration fees covered and gain access to no-cost equipment through Sport Central. #SoAllKidsCanPlay

LEARN MORE AT [KIDSPORTHAP.CA](https://kidsporthap.ca)

## Ellis Bird Farm

### CONNECTIONS:

Join us for two days of interactive activities, teepee teachings, medicine walks, exhibits, and crafts that highlight Indigenous culture, Indigenous ecological knowledge, and the interwoven relationship of Indigenous peoples with land, animals and nature.

## LEARNING FROM THE LAND

### SEPTEMBER 9-10TH, 2023

## Alberta Culture Days

### September 2023

Discover • Experience • Celebrate

Medicine Walk & Salve Making

Horse Teachings & Activity

Teepee Teachings

Indigenous-led Nature Walk

Oral traditions at Circle Deck

Bannock & Stew

Dreamcatcher Craft

Beading Workshop

Pam Hayward Market Booth

Indigenous History Exhibit

Red Deer Native Friendship Society

Rainy Creek Ranch

Lacombe Museum





# AROUND THE COUNTY

## gull lake centre





### Experience the beauty of Gull Lake Centre.

**Gull Lake Centre is designed with event flexibility in mind.**

Our incredible facilities and amenities can be used by groups from 20-250 people. Whether you are planning a conference, retreat, or family reunion, our space is versatile and accommodating.

We are open year round for event rentals! For more information on pricing, specific amenities and rental spaces, visit

[gullakecentre.ca/rentals](http://gullakecentre.ca/rentals)



## DO YOU HAVE GRAVEL?

To ensure we have a reliable supply of gravel to maintain our County roads, Lacombe County is always on the lookout for new gravel sources. Gravel is an important, non-renewable resource necessary for construction and maintenance of roads.

**WHAT SHOULD I DO IF I THINK I HAVE GRAVEL ON MY LAND?**

If you think you have gravel on your property, and you wish to investigate further, please contact the County office at 403-782-8379 and speak with the Operations Department. County staff will come out to meet with you and arrange for testing. While the testing involves digging a test hole or holes, it is done in the least invasive way practical.

There is no obligation on the part of the Land Owner if suitable gravel is found. The County will discuss options and work with the land owner on a possible agreement for access and use of the land.

IS THE GROUND  
**ROCKY?**

DO YOU HAVE A CREEK/RIVER BED ON  
**YOUR PROPERTY?**

ARE THERE GRAVEL PITS  
**NEARBY?**

HAVE YOU FOUND ROCKS DURING  
**EXCAVATION WORK?**

DO YOU HAVE LOW LYING  
**PROPERTY?**

WWW.LACOMBECOUNTY.COM — TWITTER @LACOMBECOUNTY — 403.782.8379



**Sept 11  
10am-4pm  
at: LMC**

### Volunteer Management Foundations WORKSHOP

**COST \$60 includes lunch**

This course will provide tangible tools to help you develop your managerial skills and to build a sustainable volunteer program.

**In this 1-day workshop, you will learn the volunteer management cycle, including:**

- Planning
- Recruit & Selection
- Training & Orientation
- Recognition & Retention

**Register by September 7th by contacting CLLLA at 403-782-7955 or [office@cllla.com](mailto:office@cllla.com)**



**Sept 25  
10am-3pm  
at: LMC**

### Policies and Procedures WORKSHOP

**COST \$60 includes lunch**

**In this 1-day workshop, you will discover how to:**

- Define policies and procedures
- Define board policy vs. management policy
- Create a policy checklist
- Introduce new policies and procedures to volunteers
- Monitor and evaluate the progress

**Register by September 21st by contacting CLLLA at 403-782-7955 or [office@cllla.com](mailto:office@cllla.com)**



# AROUND THE COUNTY




Open:  
Mon. & Wed. 10am – 8pm  
Tues., Thurs. & Fri. 10am – 6pm  
Sat. 10am – 5pm  
Sun. 1pm – 5pm

**PUBLIC LIBRARY**  
BLACKFALDS

**Memberships are free at The Blackfalds Public Library for Blackfalds and Lacombe County residents!**

**We have a lot of exciting free programs for all from babies to adults. Check out our socials for our current program calendars and pop up events.**

**@BLACKFALDSLIRARY**




Located in the Eagle Builders Centre  
5302 Broadway Avenue  
403-885-2343



Wednesday 3:00pm  
23 August 2023

## Family Movie Matinee



hosted by Mary C Moore Public Library in the Kinsmen Room (upstairs from the library)

**Free admission!**  
**Popcorn & snacks for sale by donation**  
All ages welcome. Children must be accompanied by an adult.  
Film is rated **PG** for mild violence

**SUPER MARIO BROS STARTS AT 3:00PM**  
**DOORS OPEN AT 2:45**



# WHAT WE DO

Alix and Area Community Resource Centre

---

## FALL 2023

Baby Clinic Returns on September 20:  
Every 3rd Wednesday appointments can be made, to book routine child immunizations.  
Please call: Stettler Health Unit, 403-742-3326.

Ongoing and for Everyone!  
Fresh veggies are delivered weekly to the Centre, typically available for pick-up on Tuesday mornings. Thank you Pic N Pac for the generous donation! Free for everyone and while quantities last. Please limit to one bag per person to help items go further.

Partner Update- Fuel for School Rural Nutrition Initiative:  
Bashaw & District Support Services has enjoyed hosting the Fuel for School – Rural Nutrition Initiative. It's been an honor to work with the Government of Alberta to ensure nutritional opportunities are available for school age children. We believe in the importance of fostering a healthy mind and body so that kids can focus on learning while in school. This program serves the schools of Mecca Glen, Alix, Donalda and Bashaw. The program is intended to provide universal access to quality food within each school. March to May 2023 stats report over 13,500 servings within our participating schools. The efforts from School Administration, community leaders, volunteers, and program staff greatly contributed to the success of launching and delivering this initiative. We wish to thank our valuable partners: Lionel's No Frills, Bashaw & District Food Bank, very generous donors (eggs, bread, cutlery, etc), program and community volunteers, community groups, and of course the Government of Alberta for making this affordable, attainable, and successful!  
Regionalnutrition1@gmail.com

### Services Available

- Information & Referral
- Resource Navigation
- Volunteer Services
- Family Wellness
- Meals on Wheels
- Home Support
- Community Services
- Adult Learning
- Alix Food Bank
- Wise Owls

alixmirrorwellness@gmail.com

Follow us on Facebook  
@AlixandAreaCommunityResourceCentre  
www.alixcrc.com



**Monday to Thursday**  **10:00 AM - 4:00 PM**

\*Closed all statutory holidays\*

Bay 1, 5008 50 Ave, Alix, AB

**403-396-3369**



**Mary C Moore Public Library**

## Family Crafts & Makerspace



**multiple stations with STEAM activities for all ages and abilities**

**including:**  
Snap Circuits  
Arts & Crafts  
+ more!

**Tues 29 August**  
6:30-8:00pm

Free program! Please register at the library or online



\*parents are required to stay with young children\*



## Mother's Grace

### Postpartum Support Group

Collaboration with Lacombe Addiction & Mental Health and Lacombe Family Resource Network. We are offering a support group for mothers who are within the first 18 months of post-partum.

**FREE & CONFIDENTIAL**  
**Child Care Provided**

**Dates:** Wednesday, September 13, 20, 27  
Wednesday, October 4, 11, 18, 25  
Wednesday, November 1

**Time:** 1:30 pm to 3:00 pm

**Place:** Lacombe First Baptist Church  
27008 Township Road 405.5  
Lacombe, Alberta

Register by calling Lacombe Addiction and Mental Health at 403.782.3413








# SEPTEMBER 2023

Sun	Mon	Tue	Wed	Thu	Fri	Sat
27	28	29	30	31	SEPT 1	2
3	4 Labour Day (Office Closed)	5	6	7	8	9
10	11	12	13	14 County Council 9AM	15 County News Submissions Due	16
17	18	19	20	21	22 County News Published	23
24	25	26	27	28 County Council 9AM	29	30 National Day for Truth and Reconciliation

**Upcoming Events:**

October 3: Committee of the Whole      October 9: Thanksgiving (Office Closed)      October 12: County Council

October 24: County Organizational Meeting      October 26: County Council

# Help us promote YOU!



Do you know a **business, person, place or volunteer** you want to see profiled in County News?

Do you have a photograph you want to share?

If so, email **communications@lacombecounty.com** with your ideas, photographs or stories.

We'd love to hear from you!

Proudly Maintaining Your Highways  
Counties: Lacombe | Ponoka | Red Deer | Wetaskiwin

Report road conditions 24/7  
**1 877 875 3263**

## Follow us online, and stay up-to-date on Lacombe County news, events and other information!

facebook.com/LacombeCounty

instagram.com/lacombecounty

twitter.com/LacombeCounty

youtube.com/LacombeCounty

www.lacombecounty.com

Phone | 403.782.6601    Email | info@lacombecounty.com    Fax | 403.782.3820

# COUNTY NEWS

is published by Lacombe County and printed by PostMedia.  
If you have feedback or story ideas, please contact:

Nicole Plewis, Communications Coordinator  
communications@lacombecounty.com  
403.782.6601

# Lacombe County Directory

RR3, Lacombe Alberta T4L 2N3    www.lacombecounty.com

Department Numbers:	Main Office - 403-782-6601
	Planning Services - 403-782-8389
	Community Services - 403-782-8959
	Operations - 403-782-8379
	Public Works Shop - 403-782-3567

General	
After Hours Emergency Answering Service	403.357.1210
Administration Fax	403.782.3820
Public Works Fax	403.782.5356

**For Service Requests, see our website - or phone the switchboard at 403-782-6601**

Senior Administration	
Tim Timmons, County Manager ttimmons@lacombecounty.com	Call 403-782-6601 to speak with the County Manager or with a Lacombe County Director
Michael Minchin, Director of Corporate Services mminchin@lacombecounty.com	
Bill Cade, Director of Operations bcade@lacombecounty.com	
Dale Freitag, Director of Planning Services dfreitag@lacombecounty.com	
Dion Burlock, Director of Community Services dburlock@lacombecounty.com	

Council	Home	Cell
John Ireland, Div. 1 (jireland@lacombecounty.com)		403.392.3981
Brenda Knight, Div. 2 (bknight@lacombecounty.com)	403.788.2168	403.550.2168
Barb Shepherd, Div. 3 (bshepherd@lacombecounty.com)		403.340.9724
Dwayne West, Div. 4 (dwest@lacombecounty.com)		403.660.2328
Ken Weenink, Div. 5 (kweenink@lacombecounty.com)		403.350.8014
Allan Wilson, Div. 6 (awilson@lacombecounty.com)		403.506.3735
Dana Kreil, Div. 7 (dkreil@lacombecounty.com)	403.746.3607	403.358.9400