

County News

Friday, October 20, 2023 | Volume 10

Lacombe County is holding
a PUBLIC MEETING
and an online survey...

LACOMBE
COUNTY

Dwellings
in the Agricultural Area

NOVEMBER

29

We want to hear from you!

Lacombe County is gathering the community's thoughts on dwellings in the agricultural area.

Your responses will help to describe the community's vision for housing in the agricultural area, the current housing supply, and begin to identify what future housing may be needed. The intent of this community consultation is to better understand the housing needs of agricultural residents and farm families. Your input is essential in ensuring we strike a balance between the community's housing needs and the sustainable use of our agricultural land.

There are two opportunities to learn more and share your thoughts.

Public Meeting: Wednesday, November 29

Online Survey: the survey will open after the public meeting on November 29 and close on December 13 at midnight

For more information, please contact Planning Services or visit the County's website

Cajun Paradis, Senior Planner
Email: planning@lacombecounty.com
Phone: 403-782-8389

**The Public Meeting is
Wednesday,
November 29, 2023**

🕒 7:00 PM

📍 Lacombe County office,
Council Chambers

*Located 2½ miles west of Highway 2
at the intersection of Spruceville Road
and Highway 12*

learn more at

www.lacombecounty.com/dwellings



What's Inside

- 2 NOV. 2 | Internet Safety Presentation
- 2 County welcomes NEW Economic Development Officer
- 3 Friends of Education Award for School Resource Officers
- 4 Medicine River Crime Watch AGM
- 9 Ag Plastics Program starting soon
- 9 WORKSHOP | Agreements in Agriculture
- 10 PUBLIC HEARING | Southeast Bentley Area Structure Plan
- 11 PUBLIC MEETING | QEII West Area Structure Plan
- 12-13 Subdivision & Development & Map
- 13 NOVA Chemicals Community Open House
- 14 FAQs | Area Structure Plans
- 15 SPOTlight | Rangeland Bison & Elk
- 16-17 Council Highlights
- 18 Carbon Monoxide Awareness Info
- 20-23 Around the County: Events & Info

www.lacombecounty.com

LACOMBE
COUNTY

Publication Mail Agreement No 43726064

Return undeliverable items to:
Lacombe County
RR3, Lacombe, AB T4L 2N3

**THE DANGERS OF
SOCIAL MEDIA & OTHER
INTERNET TRAPS**

November 2, 2023
Eckville Community Centre
Doors Open: 6:30 P.M.
Presentation: 7:00 P.M.

**KEEP YOUR
CHILDREN
SAFE!!**

SPEAKER: SERGEANT KERRY SHIMA
Internet Child Exploitation (I.C.E.) Unit

OUR SPEAKER

Sgt. Kerry Shima is a member of the Northern Alberta Internet Child Exploitation Unit that investigates incidents of child luring, sextortion, possession, transmission, and the making of child pornography, as well as internet-related voyeurism involving youth.



SGT. KERRY SHIMA
Internet Child Exploitation (I.C.E.) Unit

**ABOUT THE
PRESENTATION**

This presentation will focus on education, prevention, and putting parents, teachers, caregivers and coaches in a position to protect their children from online sexual exploitation.

Sgt. Kerry Shima will discuss:

- The role of I.C.E. in Alberta,
- Current applications, internet platforms, and resources available to parents so they can better support healthy and productive online experiences for their children and teens.

Assorted snacks and refreshments will be served.

Sponsored by Lacombe County, the Medicine River Crimewatch Society.



Co-sponsored by Eckville FCSS and Central Alberta Co-op



Lacombe County welcomes Economic Development Officer

Lacombe County is pleased to introduce Kerrie Taylor as our new Economic Development Officer (EDO). In this role, Kerrie will work closely with businesses, community groups, and other stakeholders to forge partnerships and execute economic development activities aimed at attracting new businesses while fostering the growth of existing ones.

With the growth in our hamlets, business and industrial parks, as well as increased activity in agribusinesses in Lacombe County – and a new Economic Development Strategy in hand – Kerrie is ready to support businesses of all sizes in Lacombe County.

“I enthusiastically anticipate meeting businesses, both large and small, that have chosen Lacombe County as their home and assisting them in achieving their objectives,” expressed Kerrie. “The County’s vision statement is: ‘Success grows here!’ My mission is to help Lacombe County move closer to that vision by supporting, championing, enhancing, and encouraging existing businesses, all while working to attract new opportunities to make Lacombe County their preferred destination.”

The EDO’s responsibilities encompass developing and executing economic growth and development strategies, marketing plans, and projects that align with the County’s economic development priorities. Additionally, the role includes:

- Implementing the County’s new Economic Development Strategy.
- Building relationships and broadening awareness of investment opportunities in Lacombe County.
- Developing and utilizing effective marketing and promotional tools for business development.
- Monitoring and reporting on various economic development and business statistics in the County.



ABOUT KERRIE TAYLOR

Kerrie boasts extensive experience in various government roles in Northern BC and Alberta. She previously served in the Economic Development Department for the District of Tumbler Ridge and has spent the last four years as the Economic Development Officer with the Municipal District of Greenview. Kerrie holds an Economic Development Officer designation from the University of Waterloo and has recently successfully completed the Digital Marketing Certificate Program at the University of Calgary.

Kerrie brings her knowledge and experience to Lacombe County to advance our Economic Development Strategy and ongoing economic initiatives.

“I see immense potential for businesses in Lacombe County. I look forward to nurturing the growth of our existing County businesses and promoting the region as an exceptional destination for business relocation and development,” remarked Kerrie. “I am committed to showcasing Lacombe County’s diverse business sectors.”

If you have any economic development questions, please call Kerrie at 403-782-8389 or email economicdevelopment@lacombecounty.com.

**LACOMBE
COUNTY**

We will remember them...
Remembrance Day | November 11

Tax Installment PAYMENT PLAN



Sign up TODAY
for the monthly plan.



Automatic
Budget-friendly
Simple
Convenient

Contact Lacombe County at (403) 782-6601 or
visit www.lacombecounty.com for more details.

County Peace Officer among recipients of the Friends of Education Award for WCPS School Resource Officer Program

In a heartwarming moment of recognition, Wolf Creek Public Schools' (WCPS) School Resource Officer (SRO) Program recently received the Friends of Education award. The announcement was made during the Alberta School Board Association Zone 4 Board meeting, marking a momentous occasion that celebrates the exceptional efforts put forth by the dedicated team behind this initiative.

The School Resource Officer program, consisting of Lacombe County Community Peace Officer Dave Lahucik, Const. Michelle Grovet, Const. Lenny Wells, Const. Jeff Hewitt, in partnership with WCPS' Director of Safe and Caring Schools, Barb Reaney, has consistently strived to create a nurturing and safe environment within the school district. Their commitment to this cause goes beyond the badge; they have become mentors, friends, and guardians of the well-being of the students they serve.

"These SROs have truly woven themselves into the very fabric of our school communities," expressed Barb Reaney, Wolf Creek Public Schools. "Their presence extends far beyond the conventional roles of law enforcement. They are dedicated to educating our youth, and their efforts are nothing short of remarkable."

What sets this SRO program apart is its holistic approach to addressing issues within schools. Instead of solely relying on punitive measures, the team explores alternatives such as restorative justice. It's about more than just consequences; it's about healing, understanding, and forging a path forward for everyone involved.

"In the end," says Lacombe County SRO Dave Lahucik, "it's about creating a positive and visible image of law enforcement within our schools. It's about fostering positive relationships to ensure that these

students have the knowledge and support they need to navigate the challenges of today's world."

Wolf Creek's SROs are currently stationed in Ponoka, Lacombe, Lacombe County, and Blackfalds, each serving their respective areas within the community. Lacombe County partnered with WCPS on the School Resource Officer Program in 2019 to work WCPS schools in Alix, Bentley, Clive and Eckville.

The Friends of Education Award was presented to Wolf Creek and its SROs at the monthly meeting of ASBA Zone 4 reps in September, hosted by Wolf Creek in Ponoka. The Wolf Creek Public Schools SRO program is a shining example of how dedicated professionals can create lasting positive change within our communities.



Mirror Museum hosts *The Portraits of War: We Remember*

The Mirror and District Museum is proud to announce that we will be hosting an exhibit from the Lacombe Museum called *The Portraits of War: We Remember*.

traits of War: We Remember.

Through immersive storytelling, visitors will learn about the personal experiences of veterans from

the Lacombe region who served in various military conflicts. They will have the opportunity to gain a deeper understanding of the sacrifices and experiences of these individuals through the display of their portraits, artifacts, and the storytelling that accompanies them.

This exhibit has interactive elements including uniforms to try on, and 3 video interviews the Lacombe Museum curators conducted with our regional museum partners in 2020.

We invite all members of the community to come and view this exhibit and learn more

about the local veterans that served in these wars. Our museum will be open:

- November 3 from 6 PM to 8 PM (Friday)
- November 4 & 5 from noon to 4PM (Saturday & Sunday)
- November 10 - 6 PM to 8PM (Friday)
- November 11 & 12 noon to 4:00PM (Saturday & Sunday)



SAFETY FIRST

Medicine River Crime Watch AGM

Tuesday, October 24 | 7 PM | Gilby Community Hall (north of Eckville on Hwy 12)



Date: Tuesday, October 24, 2023

Time: 7:00 p.m.

Location: GILBY COMMUNITY HALL (north of Eckville on Hwy 12)

Details:

- **Michael Kartusch**, Manger of I.T. Services at Lacombe County, will give a presentation on cybersecurity.
- **Carrie Dennett**, a Professor from the Justice Studies Program at Red Deer Polytechnic will host an informal discussion with attendees about the crime prevention needs in our community.

All attendees will have their names **entered for DOOR PRIZES!** Coffee will be provided. **Attendees are asked to bring a snack to share for the meeting.**

THANK YOU TO THE GILBY AG SOCIETY FOR DONATING THE USE OF THE GILBY HALL

The best crime prevention is when community members watch out for each other!

If you want to become a Medicine River Crime Watch member or want to update your membership, email: medicinerivercws@gmail.com.

REMINDER: Burning in Lacombe County

Under Lacombe County's Fire Protection policy you do NOT require a fire permit between November 1 and February 28. If you are found burning without a permit you will be required to pay for the fire department response fee.

A fire permit is required for all outdoor fires, excluding fires used for cooking or warming purposes or burning barrels. While the use of burning barrels does not require a permit they must be covered with a metal mesh screen and the mesh holes must be no larger than half an inch in size.

It is important to be aware that although you may have a permit there are only certain materials that you are allowed to burn. The list of permissible and non-permissible materials are below.

Permissible materials for burning include:

- Clean untreated wood
- Straw/hay/broken bales
- Stubble
- Grass/weeds
- Leaves/Tree pruning (yard clean up)

Items that you are **not** permitted to burn include:

- Treated wood
- Used construction materials or any materials from construction sites
- Animal manure
- Pathological Waste (human waste)
- Tires
- Used oil
- Rubber or plastic (anything coated with rubber or plastic) including bailer twine
- Containers that held pesticides or other chemicals
- Any waste that causes dense smoke, offensive odours or releases toxic substances

Additional conditions exist such as wind speed, signage, supervision, and overall health and safety factors. For this and more information on fire permits, permissible and non-permissible burning or to obtain a fire permit please visit www.lacombecounty.com or contact the County at 403-782-8959.

Halloween safety tips

Tips for parents and Caregivers

Halloween can be an exciting time for children and with the distraction of candy and costumes, safety rules can easily be forgotten. In fact, research shows that distractions can increase a child's chances of being struck by a car. Check out these simple tips to keep Halloween night a safe night for all.

1. **An adult or responsible older child should accompany younger children** since they may lack the developmental skills to cross the street on their own. This is a year-round tip that will help keep your child safe while you share good pedestrian habits and pass on a legacy of safety-minded behaviour.
2. **Teach your child to stop at the curb, look left, right and left again, and to listen for oncoming traffic.** This vital skill is especially important when children are distracted and excited. Never rely on traffic signals alone - use your eyes and ears to make sure it's safe to cross.
3. **It's unsafe to cross between parked cars or other obstacles** - always cross at crosswalks, street corners or intersections. Many injuries occur when children run out between parked cars, but even at intersections it's vital that children practice tip #2.
4. **Stay on the sidewalk or path** when walking from house to house and if there is no sidewalk, walk beside the road, facing traffic so drivers can see you. From a very young age, children can be taught that roads are for cars and sidewalks are for kids. If your community has no sidewalks, walking beside the road at night can be very dangerous - adult accompaniment and flashlights are a must, regardless of the child's age.
5. **Select costumes with bright colours** to increase your child's visibility and choose face paint instead of masks. Masks can make it hard for your child to see properly and often restrict peripheral vision, making it difficult to check for oncoming traffic before crossing a road.

Tips for drivers

Halloween means that there will be more children out on the streets. Drivers need to take extra care.

1. **Drive slowly** in residential areas where children are more likely to be trick-or-treating. Did you know that drivers cannot accurately judge their own speed when driving? The higher the speed, the less likely you are to see a child pedestrian, and the harder it is to stop quickly.
2. **Watch out for kids**, many of whom may be wearing costumes with masks that make it difficult for them to see. With the excitement of Halloween, children may forget simple pedestrian safety rules. They have a tendency to dart out in the most unexpected places - the most common being between parked cars. Remember also that costumes can limit a child's vision and they may not be able to see your vehicle.
3. **Reduce your distractions and stay alert.** All your concentration should be on the road, not diverted by cell phones or loud music.
4. **Remember to enter and exit driveways slowly and carefully.** Excited trick-or-treaters may run on sidewalks, or dart out unexpectedly. Proceed with caution, when entering or exiting the roadway.

MIRROR CORNER

MARK THESE DATES

Mirror Rec Society (Community Hall)

October 28, 2023 | KIDS HALLOWEEN PARTY.** We are hosting a kids afternoon Halloween party with hotdogs, chips, treats and something to drink. There will be draws for gift cards and treat bags to take home. Starting time will be 1:00 p.m. and depending on how long folks stay, it will go to 3-4 p.m. ****Kids 12 and under MUST be accompanied by an adult.**

We hope to see the community and surrounding neighbours there.

MIRROR MAY DAY PLANNING MEETING

October 23 | 7:00 pm | Held at the Mirror Library

This meeting is for anyone interested in working together to organize another great Mirror Day (May Long Weekend).

Contact Anne Geddert at 403-505-3587 for more information



2023 Mirror Dog Tags

A license is required for all dogs in Mirror. After February 28, 2023, the cost increases to \$30 for an altered dog and \$50 for an unaltered dog. For more information, please call (403) 782-6601 or visit www.lacombecounty.com/en/living-here/animal-control.aspx.

Lacombe County will issue a tag for each dog, which must be attached to a collar worn by the dog at all times. Lacombe County Enforcement Officers will do checks to ensure compliance.

If you would like to report a contravention of the Dog Control Bylaw, please call 403-506-9380, or email info@klassickennels.com. **For animal welfare issue please contact the Alberta SPCA at <http://www.albertasPCA.org/>***

Jolly Seniors

Pancake breakfast every second Sunday from 9 a.m.-1 p.m.

Booking Mirror Community Hall

Call Lisa 403-788-3890 or cell 403-505-3894.

Friends of the Mirror Library Society/Mirror

Library

The Mirror Library would like to remind patrons of the many items available for borrowing. We carry books for everyone, audiobooks, DVDs, games, and puzzles.

Hours: Wednesdays 2-5 p.m.
Thursdays 10 a.m. - 1 p.m.
2nd & 4th Saturdays
10 a.m. - 2 p.m.

Please like us at: facebook.com/booksinmirror for the most up to date information. The Library also has meeting spaces for rent and free Wi-Fi. Please contact us through the Facebook page or email booksinmirror@gmail.com.

Mirror Royal Canadian Legion Branch 189 - 5015 50th Avenue

Meat Draws Saturday at 4 p.m. General meetings second Sunday at 1 p.m. (unless otherwise posted).

Mirror and District Museum

Contact mmuseum@ccwireless.ca if you would like to volunteer and for hours of operation

CN Rail crossing delays

If you experience delays longer than 20 minutes at the Mirror rail yard crossing, call CN Rail at 1-800-465-9239. Follow the prompts and be ready to provide details shown on the crossing signal mast to CN personnel. Transport Canada may be reached at 1-888-463-0521.



HAMLET OF MIRROR DEVELOPMENT INCENTIVE GRANT

Are you located in the Hamlet of Mirror,
on lands zoned
Hamlet Commercial 'C-H' District or
Hamlet Industrial 'I-H' District?

Are you starting a business on an
unimproved parcel of land or in a
vacant building?



Are you expanding an
existing business?

Do you have Development Permit
approval for the proposed business?

**YOU MAY BE ELIGIBLE
FOR A DEVELOPMENT
INCENTIVE GRANT!**



**Schedule a meeting with one of our
Planners to determine if you are eligible!**



**Planning Services
403-782-8389**

ENVIRONMENT

From Marginal to Meaningful: How you can get paid for low-yielding cropland



By Ken Lewis, ALUS Coordinator

I've talked to a lot of people over the years, people with a fantastically wide variety of opinions on an equally wide number of issues. In all those kitchen table and tailgate talks, it seems there's one thing we all agree on:

No one wants more floods and droughts, reduced biodiversity or less nature.

ALUS works with farmers and ranchers to address these global challenges on a local scale.

When a farmer works with ALUS to establish a buffer zone around a wetland, that farmer is "acting locally"

to help recharge groundwater aquifers, reducing the impact of future droughts.

When a rancher works with ALUS to get a solar waterer that pumps water from a stream to a trough on high ground, that rancher is "acting locally" to enhance biodiversity and conserve natural habitat.

When a landowner works with ALUS to put up some temporary fencing that allows a forested area to regenerate, that landowner is "acting locally" to help store water on the land and in the soil, lessening the chance or the impacts of flooding downstream.

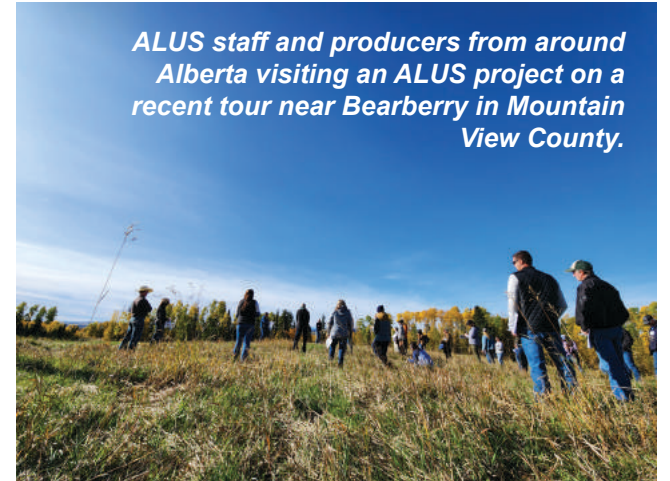
And of course, like every farmer and rancher, each farmer or rancher involved with ALUS is also producing food or fibre (or other essential products) to help us all meet our basic needs.

In addition to working on the ground with farmers and ranchers, ALUS is working "in the towers" with business and industry, to develop financial markets that reward agricultural producers for taking the local actions like those mentioned above.

Hundreds of farmers and ranchers across Canada have decided to work with ALUS and participate in these rapidly growing opportunities. You can too.

If you want to get involved with ALUS on your farm or ranch, feel free to call me at 403-505-9038 or Jenna Dell (ALUS Field Assistant) at 403-392-4616. Or visit www.alus.ca to learn more.

ALUS staff and producers from around Alberta visiting an ALUS project on a recent tour near Bearberry in Mountain View County.



NOTICE: **RESERVE LAND INSPECTIONS** **September & October**

Lacombe County staff will be conducting inspections of reserve lands throughout the County in the months of September and October.

Inspections are completed to ensure the use and management of County reserves remains consistent with [Policy RC\(8\): Use and Management of County Reserve Lands](#).

WHAT'S UP WITH THE MEDICINE RIVER?

Annual General Meeting

Medicine River Watershed

THURSDAY,

**NOVEMBER 16, 2023
7:00 PM**

Gilby Hall
(located off Hwy 12, 1.5 miles west of
Hwy 12 & Hwy 766 junction)

**2023 Water Sampling Results
Presentation**

Guest Speaker: Darian Coulter
(lead water sampler for the project)

AGM to follow

**EVERYONE IS
WELCOME!**

**Door prizes | Snacks and
beverages provided**



OPERATIONS



DO YOU HAVE GRAVEL?

To ensure we have a reliable supply of gravel to maintain our County roads, Lacombe County is always on the lookout for new gravel sources. Gravel is an important, non-renewable resource necessary for construction and maintenance of roads.

WHAT SHOULD I DO IF I THINK I HAVE GRAVEL ON MY LAND?

If you think you have gravel on your property, and you wish to investigate further, please contact the County office at 403-782-8379 and speak with the Operations Department. County staff will come out to meet with you and arrange for testing. While the testing involves digging a test hole or holes, it is done in the least invasive way practical.

There is no obligation on the part of the Land Owner if suitable gravel is found. The County will discuss options and work with the land owner on a possible agreement for access and use of the land.

IS THE GROUND
ROCKY?

DO YOU HAVE A CREEK/RIVER BED ON
YOUR PROPERTY?

ARE THERE GRAVEL PITS
NEARBY?

HAVE YOU FOUND ROCKS DURING
EXCAVATION WORK?

DO YOU HAVE LOW LYING
PROPERTY?

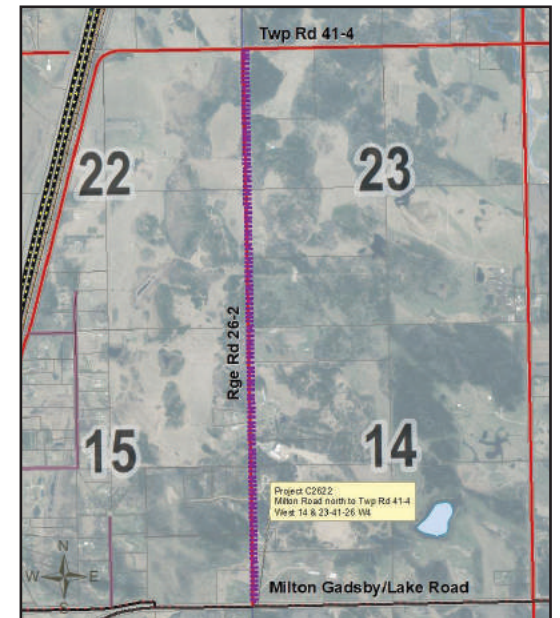
WWW.LACOMBECOUNTY.COM — TWITTER @LACOMBECOUNTY — 403.782.8379

CONSTRUCTION NOTIFICATION | Range Road 26-2

Lacombe County has issued a Notification of Municipal Works for road construction on **Range Road 26-2 from Milton Road north 2 miles to Township Road 41-4.**

Roadwork will start Monday, October 23, 2023 and take 5-weeks to complete (weather permitting).

Please drive with caution around construction crews, and obey all signs.



CN Police want you to Stay Safe this Winter

No matter where you live, chances are you will face some challenging driving conditions in the months ahead. Freezing rain, snow, sleet and whiteouts can make winter driving downright dangerous.

There's a spike in railway crossing incidents during the winter months. This is due to many factors, including:

- Ice and snow making it harder for drivers to stop and manoeuvre their vehicles;
- Snowy roads that hide pavement markings;
- Blowing snow, fog, and sleet that reduce visibility;
- Snowbanks and snow in trees reducing sight lines;

Reducing the likelihood of being in a serious car accident in winter starts with proper planning and knowing your rail-safety basics. Following these simple tips can help keep you safe when you encounter train tracks this winter:

Plan ahead and check the weather forecast before travelling—not only for your current location, but also for your final destination. If conditions deteriorate while you're on the road, stop at the nearest town or rest area and wait until it's safe to continue driving.

Reduce your speed when road conditions are poor. Always slow down well in advance of a railway crossing. The more time you have to react, the better chance you have of avoiding a collision.

Avoid distractions when approaching railway crossings turn off your radio

and heating fans so you can listen for trains. Reduced visibility and sounds from a storm can make it more difficult to see and hear if a train is coming. Roll down your window—especially if it's frosty or foggy—and look both ways before crossing the tracks.

Look for railway warning signs and signals snow may cover train tracks at a crossing, making them look like the road. Look for warning signs and other indications that there is a railway crossing ahead so you can prepare to stop, especially when driving at night.

Use winter tires they have treads designed to grip ice and snow, so you will be less likely to slide on the road or into the side of a train. All-season tires can begin to lose their traction when the temperature drops below 7°C.

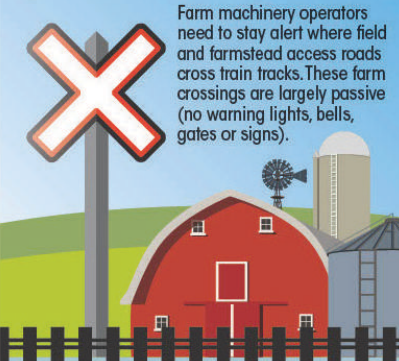
Don't drive impaired alcohol and drugs such as marijuana reduce your ability to pay attention, react quickly and make safe driving choices.

Remember "any time is train time". Be rail-smart this winter: **Look. Listen. Live.**

A CN Police Service Community Resource Officer (CRO) is available to provide additional safety information as well as an in-person safety presentation to your staff. To contact the closet CRO please contact the CN Tip line www.cn.ca/en/safety/cn-police-service/ and request contact with a CNPS CRO

Field to field yield to trains

Farm machinery operators need to stay alert where field and farmstead access roads cross train tracks. These farm crossings are largely passive (no warning lights, bells, gates or signs).




Is it safe to go?

- Make sure there is enough room on the other side of the train track or tracks to fully clear without stopping.
- Make sure that any towed machinery does not become unhitched while crossing.
- Watch during the crossing that no loaded material becomes dislodged and falls onto the train tracks.


Stop safely at all farm crossings

- Because of their size, trains appear to be much further away and travelling much slower than their actual speed.
- Stop no closer than 5 metres from the nearest rail.
- While stopped, look carefully in each direction for approaching trains, moving head and eyes to see around obstructions such as mirrors, windshield pillars and implements.



Remember!

- Some farm machinery does not transport well across farm crossings.
- Do not attempt a crossing with low-slung machinery that can become lodged on crossings.
- Before moving new machinery over farm crossings, make sure it can be safely moved over the crossing.



AGRICULTURE

Clubroot of Canola

What is it?

Clubroot is a serious soil-borne disease of canola, mustard, and other crops of the cabbage family.

Why is it of concern?

This disease is capable of significantly reducing yield, quality, and may destroy a crop if infestation is high enough.

How can it be spread?

Infested soil can be carried field to field by farm machinery especially tillage equipment, as well as wind and water erosion.

How long can it persist in the soil?

Resting spores are extremely long lived and may survive in soil for up to 20 years.

Best Management Practices

- Use Clubroot resistant varieties when growing canola in areas only where the disease is established.
- Use long rotation breaks (Three years or more) between canola crops.
- Practice good sanitation of equipment and machinery to restrict the movement of potentially contaminated soil.
- Use direct seeding and other soil conservation practices to reduce soil erosion.
- Minimize vehicle and equipment traffic to and from fields.
- Scout canola fields regularly and carefully. Identify causes of wilting, stunting, yellowing, and premature ripening.



INSPECTION NOTICE

Lacombe County Clubroot of Canola Inspections

Lacombe County Agricultural Service Board will be conducting random Clubroot of Canola Inspections as per County Policy AG(11) Clubroot of Canola.

With the increased spread of Clubroot of Canola within Central Alberta, canola growers must remain vigilant to limit the spread and minimize the economic impacts of Clubroot of Canola.

Symptoms include patches of premature ripening plants, shrivelled unfilled seed pods, and galls present on the plant's root system.

Swathing operations provide an excellent opportunity to scout for the presence of Clubroot of Canola, as well as sclerotinia, and blackleg. If you spot patches of prematurely ripened Canola in your field, take a minute to pull some standing plants or stubble and inspect the root system.

If you have any questions or concerns contact:

Mike Bates, Manager of Agriculture & Environmental Services, mbates@lacombecounty.com / 403.782.8959

Where does the next generation fit in agriculture?



The average age of a Canadian farmer is 56 years olds. Not to say 56 is old, but as the average age continues to increase, the demographic of farmers gets older. Farmers work hard for everything they acquire, from land and animals to houses and other belongings, so why would they retire if they can keep going. The fact is, no one wants to quit while they are still ahead, but where does that leave the new generation of young adults looking to enter the agriculture industry?

The younger generation often gets the reputation for being the generation of technology. People will tell you "young people are always on their phones," so what if the next generation's technological knowledge and skill was their way into the agriculture sector? Technology is supposed to be the future of the world, in turn making it the future of agriculture. Young people should take advantage of this fact and use it to make opportunities for themselves. There is an ever changing and evolving need within agriculture for more specific skill sets, beginning to revolve more and more around a qualified understanding of technology.

Agriculture oriented colleges and universities are beginning to focus their programs not only on the basics of farming and agriculture, but also on the technology that is beginning to come along with agriculture without a second thought. A great place to start for a young person wanting to get into agriculture would be with a program that will further enhance their present knowledge, while also adding to it with what is coming around in the future. Having any past agriculture experience, in combination with a solid education instilling and furthering their knowledge will only benefit them in the long run.

Alongside furthering their knowledge with school, furthering their experience and exposure is also a bonus. Many schools and organizations offer clubs, internships, and scholarships to benefit a young person's learning. Exposure and experience will go hand in hand to grow a young person's career and build their skill set to become more

specified, opening up even more opportunities.

Some technological additives related to a young person's skills may include exposure to drone use, experience in creating variable rate field maps, or an understanding of automated equipment systems. Drone scouting is being done to save on time and increase efficiency, as it can create a solid look at the field via images and data to be used in further crop planning.

Similarly, satellite imagery such as Sentinel 2 imagery is being used to calculate the Normal Difference Vegetation Index (NDVI) of entire fields within minutes. NDVI is a measure of the colours of light being reflected off of plants, used to monitor plant growth and areas of stress on the field level. The NDVI is then used as an excellent option to create a zone management plan for variable rate technologies, used as seeding or spraying patterns.

All these technologies are the way of the future in agriculture, making any experience with them integral to a young person trying to grow their specific skill set. Each agricultural technology plays a role in benefiting all the others they work alongside. Not only within crop related technology, but also livestock related technologies such as automated livestock feed systems or milking robots for dairy cows.

Opportunities to enter agriculture are becoming more rare so everything has to be done with efficiency and intention.

The future of agriculture lies within the next generation, so the more preparation and opportunities to learn, the better equipped they will be to handle anything the industry throws at them. Taking any opportunity to further a young person's knowledge can only benefit the agriculture industry in the long run. Creating more specific skill sets, increasing knowledge of agricultural technologies, and exposing the next generation to exactly what the future of agriculture has to offer will create more qualified, passionate individuals who have the same drive to see the agriculture industry thrive as every farmer out there who worked hard for everything they have.

ATTENTION

Grain Bag and Twine Recylers in Lacombe County

Are you recycling your agricultural plastics and twine to help the environment?

IT ONLY WORKS IF YOU RECYCLE RIGHT!!

We have found many recycling issues, which have led to twine bags thrown in the garbage (rather than appropriately recycled). Please ensure you are following the proper steps (below).



NO feed bags ~ NO grain totes ~ NO silage plastic ~ NO bale wrap

ABOUT

Grain Bag and Twine Recycling in Lacombe County

Grain Bag Recycling



Details:

This service is offered free of charge to agriculture producers operating within Lacombe County. The grain bags will be rolled and collected on farm site for eventual delivery to a plastic recycling center in Alberta.

Requirements:

- Agriculture producers who request grain bag recycling services must provide one individual on site, capable of assisting the rolling and collection operation.
- Grain bags **MUST BE FREE** of grain, mud, dirt debris, and vermin.
- To ensure used grain bags are eligible for recycling, grain bag collection services should be scheduled within one week of grain extraction.
- Grain bag collection services are offered free of charge.

Twine Recycling



Details:

Producers can pick up Clean Farms Twine Recycling Bags at any Lacombe Regional Waste Services Commission Transfer Site during regular business hours. Twine will only be accepted if it is placed in the Clean Farms Twine Recycling Bag, and then brought to the collection site.

Requirements:

- 1. Shake** – Remove as much debris, snow or ice as possible. Excessively dirty twine may be rejected, or subject to a landfill tipping fee or additional charges at drop off.
- 2. Bag** – Place loose twine in a Clean Farms Twine Recycling Bag and tie bags to close. Please do not knot the twine. Clean Farms Twine Recycling bags are available free of charge at any Lacombe Regional Waste Services Commission Transfer Sites.
- 3. Return** – Return to a Lacombe Regional Waste Services Commission Transfer Site during regular business hours.

AGREEMENTS IN AGRICULTURE

How to write them and what you need to know!

DATE: NOVEMBER 16, 2023

TIME: 6:30PM - 9:00PM

**LOCATION: PENHOLD
MULTIPLEX**

(WASKASOO AVENUE, PENHOLD)

Gone are the days of hand shake agreements! Chad Evans with Evans Law will be introducing producers to the basic requirements of what is required in any agreement. These agreements include:

- land rental agreements
- surface lease agreements
- mineral rights lease agreements
- purchase and sale of land agreements

Cost is \$20+GST/participant. Register via Eventbrite (scan QR code or visit https://agreements_in_agriculture.eventbrite.ca) or call Jalene at 403-782-8959.



Investing in ag societies & local communities

A new capital grant will help Alberta's agricultural societies with facility repairs and upgrades.

Alberta's government is launching the Agricultural Societies Infrastructure Revitalization Program, a new capital grant that allocates \$2.5 million annually to help ag societies update existing facilities.

These buildings are central hubs in their communities, offering residents and visitors opportunities to gather, build connections and engage with their neighbours. Alberta's communities need effective, up-to-date facilities to encourage community involvement and growth.

"Facilities like community halls, ice rinks and rodeo grounds are integral to the successful operation of Alberta's ag societies. This funding makes sure rural communities can continue to benefit from the events, services, educational programs and volunteer opportunities that agricultural societies provide," said RJ Sigurdson, Minister of Agriculture and Irrigation.

The program will allow agricultural societies to address issues related to aging infrastructure, ultimately extending the useful life of their community buildings. Applications for eligible projects open on Oct. 5 and the grant can be used to make improvements including roof repairs, accessibil-

ity enhancements, heating upgrades and window installations.

"Events like rural fairs, farmers' markets and rodeos support community building and agricultural improvement across rural Alberta. This government funding will help agricultural societies keep their facilities modern, accessible and safe for generations to come," said Brett Warder, president, Alberta Association of Agricultural Societies.

The program builds upon the Government of Alberta's existing Agricultural Societies Grant Program, which provides annual funding to support agricultural societies' operational expenses.

QUICK FACTS

- The Agricultural Societies Infrastructure Revitalization Program grant awards between \$10,000 and \$100,000 for individual projects.
- Alberta's agricultural societies own or operate more than 900 facilities and host more than 37,000 activities and events per year.

Learn more OR apply at <https://www.alberta.ca/alberta-agricultural-societies-program>.



To book grain bag collection or further questions regarding agriculture plastics or twine recycling, please call 403- 782-8959.

BUSINESS FEATURE | D&M Concrete Products: Bolts Depot

D&M Concrete is a family-owned and operated business that has been serving Lacombe County since 1979. The company started out supplying concrete and gravel, and has since expanded to include several other divisions, including precast concrete, fabrication, landscape supplies, and most recently, the Rental Division and Bolt Supply.

The decision to open D&M Bolt Supply came from a need for a local bolt supply shop. The owners saw an opportunity to provide a valuable service to local farmers and businesses, and they have been met with great success.

In its first year of operation, D&M Bolt Supply has seen a huge increase in interest in its products and services. The company prides itself on having the supply on hand when customers need it, and on providing exceptional customer service.

D&M Bolt Supply is committed to being an active and present member of the community. The company is passionate about being involved in service groups and giving back in any way possible.

One of the biggest challenges that D&M Bolt Supply seems to face is finding the right employees at the right time. However, that seems to be a challenge for most businesses. Despite this challenge, D&M Bolt Supply continues to grow and succeed.

D&M Concrete, along with the new D&M Bolt Supply is committed to providing quality products and exceptional customer service, and it is this commitment that has made it a trusted name in the community.

FIND THEM ONLINE:

Website:
<https://www.dmconcrete.com/bolts>

Facebook:
/DMconcreteLacombe

Instagram:
@dmconcretelandscape

Linkedin:
/d&m-concrete-products-ltd/



Lacombe County is holding
a **PUBLIC HEARING**
and you're invited...



**Tuesday, November 14, 2023
@ 9:00 AM**



**In Person: Lacombe County Office,
Council Chambers**

Located 2½ miles west of Highway 2 at the intersection of Spruceville Road and Highway 12.



Virtual Meeting: Zoom or By Phone

Instructions for accessing the meeting by phone or computer/laptop can be found on the County's website here:

<https://bit.ly/2UvpnNm>



**SCAN ME TO
VISIT WEBSITE
FOR VIRTUAL
MEETING
INSTRUCTIONS**

BYLAW NO. 1397/23

SOUTHEAST BENTLEY AREA STRUCTURE PLAN

Lacombe County and the Town of Bentley have partnered to prepare for and facilitate future commercial and industrial development on the lands southeast of Bentley, within Lacombe County. The main product of this initiative is the Southeast Bentley Area Structure Plan, which outlines potential areas commercial and industrial development can be considered and land use policies that would apply if development is to occur.

The draft Plan incorporates feedback expressed by the public. To view the draft Plan and public engagement summary report, please visit the County's website. Lacombe County Council has scheduled this Public Hearing to hear from the public before the Plan is considered for final adoption.

HOW DO I COMMENT?

Anyone wishing to comment on the proposed bylaw will have an opportunity to do so at a public hearing. If you are unable to attend the hearing, written submissions can be made to the County. You will, however, need to ensure that your comments are received by the County prior to the date of the hearing. Your comments can be sent by:

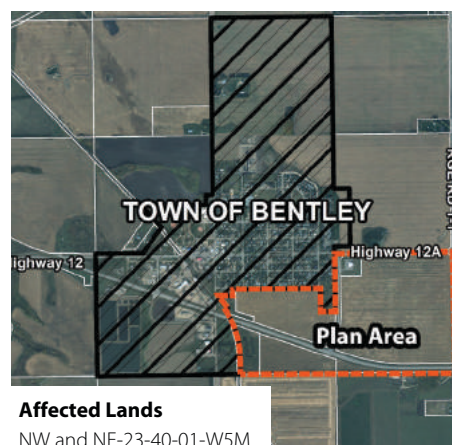
EMAIL planning@lacombecounty.com
FAX 403-782-3820, or
MAIL RR 3, Lacombe AB, T4L 2N3

All submissions will be public information.

**For more information, please contact Planning
Services or visit the County's website**

Nicklas Baran, Planner / Development Officer
Email: planning@lacombecounty.com
Phone: 403-782-8389
www.lacombecounty.com

CONTEXT MAP



Affected Lands
NW and NE-23-40-01-W5M

LINCOLN HALL - Our History



Lincoln Community Society was established in 1927!

Over the years, countless celebrations were held in our old hall - bringing community spirit together through the decades.

In 2003, we pulled together as a community and built a bigger hall to ensure that community events will continue well into the future.

As we approach our 100th anniversary, we reminisce on the countless celebrations and events that have taken place in our community hall.

Our community spirit continues, and we look forward to sharing it with you. Look us up online for your next celebratory event! www.lincolnhall.ca

Nuts. Bolts. Washers.

Masonry Screws. Concrete Anchors. & More.

HARDWARE AND FASTENERS FOR ALL INDUSTRIES.

Inquire about our bin filling program!

5625 Len Thompson Drive, Lacombe | (403) 782-1034

Do you have outstanding 2023 taxes?

November 30 deadline fast approaching; 10% penalty will be applied to all unpaid taxes

An additional 10% penalty will be added on December 1 for all taxes unpaid after November 30, 2023.

The November 30 deadline and penalty are not applicable to property owners currently enrolled in the Tax Installment Payment Plan (TIPP).

How can I pay my taxes?

Tax payments are payable to Lacombe County and can be made using one of the following options:

- **In person** at the County Office during regular

office hours (8:30am to 4:30pm). At the County Office, payments are accepted via cash, cheque or Interac debit card.

- **Deposited in the envelope mail box** located at the road entrance to the County Office.
- By bill payment through **internet banking** (available through most financial institutions. Contact our office at 403-782-6601 if yours is not currently available).

- **When choosing this option, each property you are paying taxes for must be paid separately and you must use the 10 Digit Tax Roll Number as the Account Number.**

- **Electronically:** Through electronic payment methods, including internet banking and for

businesses, electronic funds transfer (EFT).

- **By Credit Card:** visit www.lacombecounty.com and pay through OptionPay, a secure third-party site, to make payment by credit card. Please note that there is a fee for this service. Lacombe County does not receive any of the credit card fees.

You can pay your bills through the teller service, bank machine, internet or telephone.

Please Note:

To ensure your payments are credited to your account, please remember to include the top “tear-away” portion of your assessment and tax notice, or provide your 10 Digit Tax Roll Number with your payment.

If you are paying by cheque, please make it payable to Lacombe County.

DID YOU KNOW? Assessment

2023 PROPERTY ASSESSMENT INSPECTIONS

Property inspections will be ongoing for the remainder of 2023. Lacombe County is aware of new construction and significant renovations due to the development and safety codes permitting processes. However, we would appreciate your assistance identifying demolitions or removals of homes, garages, sheds, or any other buildings and/or changes to use of land and existing buildings. An assessor must verify a building has been removed prior to December 31 or it will be assessed and reflected on your 2024 Assessment and Tax Notices. If any of these changes have occurred on your property and you are unsure if the County is aware of it, please contact an Assessor.

REQUESTS FOR INFORMATION

Over the past several months Lacombe County Assessors have been sending requests for information related to various projects including validation of property transfers, re inspections, and vacancy/occupancy confirmation. Most recently letters requesting information regarding potentially assessable machinery and equipment were mailed. If you have received one of this letters and require clarification on how to be compliant or what you are being asked to remit please contact an Assessor – one of us will be happy help you.

NOT GETTING YOUR MAIL?

Lacombe County regularly receives returned mail due to “address unknown”. New property owners are often excited and don’t think about verifying their address, even when everyone else is getting notices from the County and they are not. Please remind these friends and neighbours penalties apply to unpaid balances, they may want to make sure we have a correct mailing address to avoid a penalty. We appreciate your cooperation with this.

ATTENTION: Notification of Access & Request for Information

Assessors will be visiting properties throughout the municipality this year to verify property information for the purpose of preparing fair and equitable assessments as required by Provincial Statute. Assessors carry identification and will present it upon request. If you have questions or concerns, please contact us at the Lacombe County Administration Office

**Lacombe County is holding
a PUBLIC MEETING**
and you're invited...

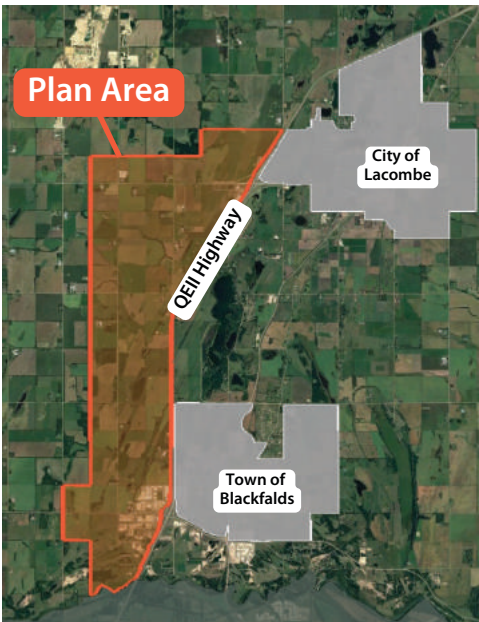


**Wednesday,
November 22, 2023**

7:00 PM

**Lacombe County Office
Council Chambers**
*Located 2½ miles west of Highway 2 at the
intersection of Spruceville Road and Highway 12*

CONTEXT MAP



For more information, please contact Planning Services
or visit the County's website
Cajun Paradis, Senior Planner
Nicklas Baran, Planner / Development Officer
Email: planning@lacombecounty.com
Phone: 403-782-8389

QEII WEST AREA STRUCTURE PLAN

Lacombe County is updating the QEII West Area Structure Plan.

This Plan covers the lands west of the QEII Highway, between Lacombe and Blackfalds, in Lacombe County. The Plan was initially adopted by County Council in 2012 to address growing demand for commercial and industrial development along the QEII Edmonton-Calgary Transportation Corridor. The Plan identifies certain strategic development nodes for potential commercial and industrial development opportunities, while preserving all other lands for agriculture. Further, it outlines standards and requirements that would apply to new development.

This Plan Area represents the most attractive and desired lands for commercial and industrial development in Lacombe County. As such, the County is updating the Plan to ensure it is up-to-date and consistent with the County's current planning policies and the community's vision for the future.

When adopting area structure plans, the County commits itself to open, transparent, and collaborative decision-making. As such, the community's feedback is critical to this Plan update. We encourage all residents, landowners, and businesses in and around the Plan Area to attend this public meeting for information on the Plan. An online and paper survey will be open for a two-week period following the public meeting.

learn more at

www.lacombecounty.com/QEIIWestASP



SUBDIVISION & DEVELOPMENT ACTIVITY

September 1, 2023 to September 30, 2023

Development Applications Received

No.	File No.	Applicant	Legal Description	Proposed Development	Decision <i>(otherwise pending)</i>
1	135/23	Darren & Tammy McGillis	SW 25-38-25-W4M	Riding and Boarding Facility	Approved
2	136/23	Bailey Pask	NE 11-40-27-W4M	Office Trailer <i>(Affordable RV Storage)</i>	
3	137/23	Kris & Kayla Stauffer	Lot 1 Block 1 Plan 962 4171 (NE 31-41-1-W5M)	Single Family Residence <i>(Replacement Dwelling)</i>	Approved
4	138/23	West Country Energy Services	Lot 3 Block 2 Plan 012 1471 (Burbank Industrial Park)	Contractor Business <i>(Vegetation Management & Pipeline Leak Detection)</i>	Approved
5	139/23	Bellco Ltd.	Lot 3 Plan 902 1609 (SE 2-40-27-W4M)	Single Family Residence <i>w/Attached Garage & Deck</i>	Approved
6	140/23	Falcon Homes 2020 Ltd.	Lot D Plan 1128MC (SE 2-40-27-W4M)	Single Family Residence <i>w/Attached Garage & Verandah</i>	Approved
7	141/23	Paul & Heather Nixon	Lot 3C Block 1 Plan 982 0463 (Roth Subdivision, Milton Area)	Shop <i>(Height Relaxation-22')</i>	Approved
8	142/23	Paul & Megan DenOudsten & Herman & Betty Scholing	NE 11-41-26-W4M	Community Facility <i>(Renewal, Tin Roof Event Centre)</i>	Approved
9	143/23	Hellbound Services Corp.	Lot 2 Block 1 Plan 942 0193 (SW 2-40-3-W5M)	Minor Business and Trade <i>(Hellbound Services Corp.)</i>	
10	144/23	Svea Contracting Ltd.	Lot 1 Block 1 Plan 122 4263 SE 17-40-26-W4M	Covered Deck	Approved
11	145/23	Kurt & Tanja Preugschas	Lot 1 Block 1 Plan 802 0629 (Lacombe Lake Estates)	Single Family Residence <i>w/Attached Garage & Verandah</i>	Approved
12	146/23	Lance & Sheila Ubell	Lot 4 Block 4 Plan 0020581 (Lacombe Lake Estates)	Detached Garage	Approved
13	147/23	Heartfaster Construction	SW 18-40-22-W4M	Single Family Residence <i>w/Attached Garage & Verandah (Replacement Dwelling)</i>	Approved
14	148/23	Ron & Teresa Blaney	Unit 150 Condo Plan 232 0356 (DeGraff's RV Resort, Gull Lake)	Park model with Deck, Gazebo and Shed	Approved
15	149/23	Ashley Pitchell	Lot 1 Block 16 Plan 7159AI (Hamlet of Mirror)	Setback Relaxation <i>(6-Foot Front Fence)</i>	Refused
16	150/23	Bell Homes & Construction	Lot 15 Block 5 Plan 222 1524 (Slopes on Sylvan Lake)	Single Family Residence <i>w/Attached Garage & Covered Deck</i>	

Do you have questions about subdivision or development activity?

Contact Us:

Lacombe County Planning Services

(403) 782-8389
planning@lacombecounty.com

Dale Freitag
Director of Planning Services

Cajun Paradis
Senior Planner

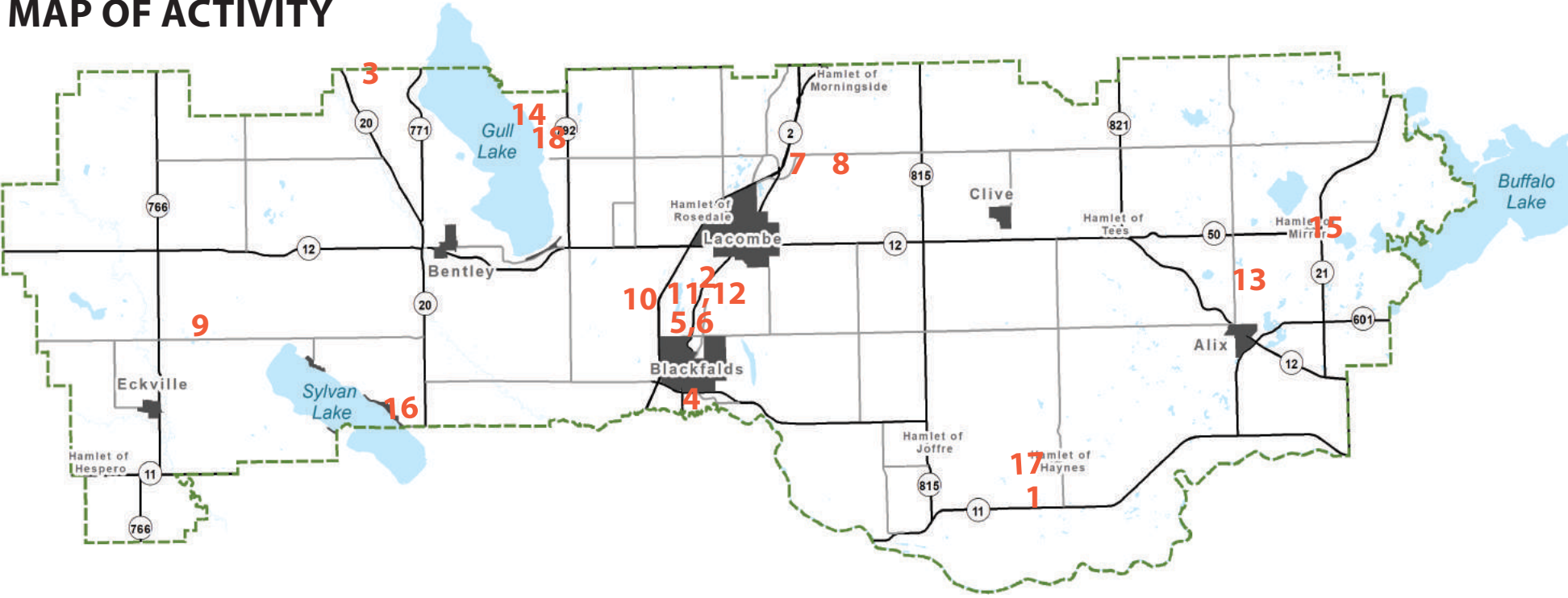
Natasha Wright
Planner / Development Officer

Nicklas Baran
Planner / Development Officer

Allison Noonan
Planning Services Administrative Assistant

Daniella Gonzalez
Planning Services Receptionist

MAP OF ACTIVITY



Subdivision Applications Received

No.	File No.	Applicant	Legal Description	Proposed Subdivision	Decision (otherwise pending)
17	S-024-23	Snell & Oslund Surveys Ltd.	NW 25-38-25-W4M	1st Parcel Out	Approved
18	S-025-23	Tony & Kathy Kamlah Riser Developments Ltd.	Pt. NW 14-41-28-W4M	Public Use (Sewage Treatment Facility, Lincoln Utility Corp.)	



Joffre Site

COMMUNITY OPEN HOUSE

Tuesday, November 14, 2023

5:30 – 7:30 p.m.

LOCATION: Haynes Hall

Travelling east on Highway 11, turn north (left) on Range Road 244 for 3.3 km to Township Road 390. Cross over 390 and take first left into parking lot of Haynes Hall.

Refreshments will be served.

AGENDA:

5:30 – 6:30 p.m.
"Drop in to Chat"

6:30 – 7:30 p.m.
Presentation/Discussion

- Get business, sustainability and facility operations updates
- Review 22nd Annual Environment Report to our community
- Discuss any topic of interest
- Provide your input and suggestions
- Fun science experiments for kids



We hope to see you there!

If you notice a broken or missing sign on a County road, call us ASAP!!





Phone: 403-782-6601
Email: info@lacombecounty.com

Facebook (@LacombeCounty)
Instagram (lacombecounty)
Twitter (@LacombeCounty)

Planning Services

Frequently Asked Questions



YOU HAVE QUESTIONS

Area Structure Plans

WE HAVE ANSWERS



Compared to most rural municipalities, Lacombe County sees an abundance of development interest. This is due to our strategic location on the QEII Edmonton-Calgary Transportation Corridor, three major lakes, existing industries, and competitive tax rate. At the same time, Lacombe County is blessed with fertile agricultural lands and irreplaceable natural features that provide countless ecosystem services. The County's area structure plans aim to protect agricultural areas for future generations while still providing opportunities for residential, commercial, and industrial development at strategic locations essential to supporting rural economic development.

WHAT IS AN AREA STRUCTURE PLAN?

In Alberta, municipalities may adopt an area structure plan to guide future development of a particular area. An area structure plan is a statutory plan adopted by a municipality as bylaw and is intended to guide that municipality's decision-making on rezoning, subdivision, and development applications.

WHY IS IT IMPORTANT TO HAVE AREA STRUCTURE PLANS IN PLACE?

As many municipal leaders have noted: Municipalities with strong planning are the most successful municipalities. Having area structure plans in place provides developers and the local community with certainty on how development of certain lands can occur in the future. It ensures that the community's vision is reflected in any new development.

The following information is included in an area structure plan:

- Clear communication on which lands multi-lot residential, commercial, or industrial development can be considered, and which lands are protected for agricultural purposes
- The studies and information that would be required as a part of a rezoning request
- Standards that would apply to any future development, including but not limited to land reserve dedications, utility servicing, transportation, storm-water management, fire protection, and landscaping.

HOW ARE LACOMBE COUNTY'S AREA STRUCTURE PLANS DEVELOPED?

Lacombe County's area structure plans are developed in-house by County staff and involve extensive community engagement to ensure the community's vision is reflected in the plans. County staff also conduct reviews of policies, studies, and technical information to ensure these considerations are communicated to

the public and are accounted for in the plans.

HOW DOES AN AREA STRUCTURE PLAN IMPACT THE RIGHTS OF AGRICULTURAL PRODUCERS?

In Lacombe County, an area structure plan simply outlines lands that may be eligible for redesignation to other uses in the future, subject to numerous studies, concept plans, public consultation, and Council approval. It does not obligate a landowner to develop their lands. All area structure plans in Lacombe County respect the right of agricultural producers to continue normal operations and protect existing subdivision and development opportunities in the Agricultural 'A' District.

WHAT AREA STRUCTURE PLANS IS THE COUNTY CURRENTLY WORKING ON?

Southeast Bentley Area Structure Plan

The Town of Bentley and Lacombe County worked together to develop the Southeast Bentley Area Structure Plan, which is nearing completion. This project was led by the Town of Bentley to facilitate future commercial and industrial development opportunities in the lands southeast of Bentley, in Lacombe County. The purpose of the project is to support the Town of Bentley's growth and stimulate economic development.

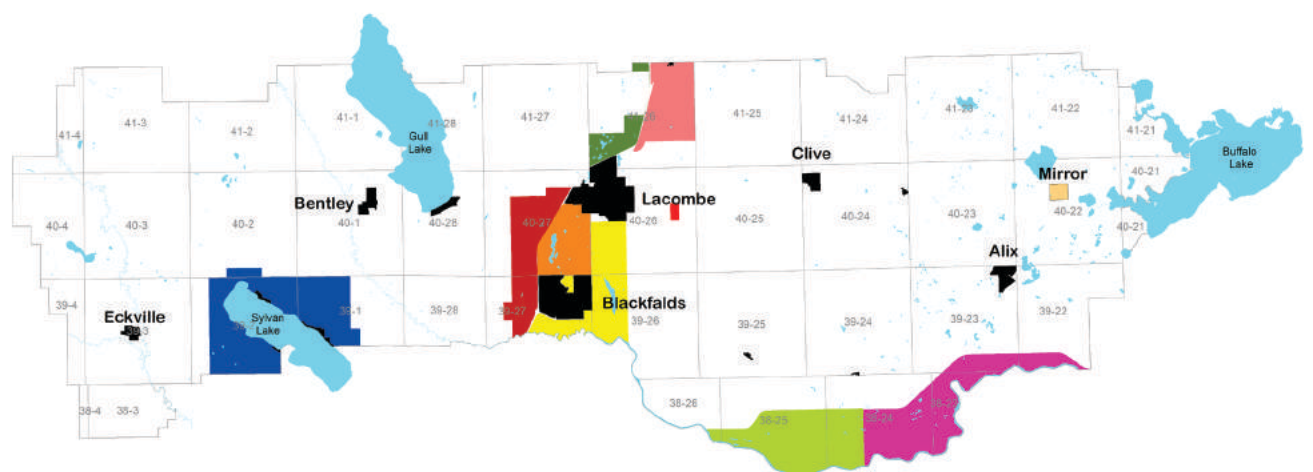
QEII West Area Structure Plan

Lacombe County is updating the Highway 2 West Area Structure Plan (updated version will be known as the "QEII West Area Structure Plan"). This Plan was initially adopted in 2012 to address demand for industrial and commercial development west of the QEII Highway, between Lacombe and Blackfalds. The lands covered by this Plan constitute the most attractive and desirable lands for industrial and commercial development in Lacombe County. Since 2012, there has been significant growth in the Plan Area, servicing is now available, and the County has updated its Municipal Development Plan and Land Use Bylaw, as well as adopted two updated intermunicipal development plans with Lacombe and Blackfalds. As such, a Plan update is necessary to ensure the policies are up-to-date with the County's existing policies and in alignment with the community's vision.

WHAT LANDS IN LACOMBE COUNTY HAVE AN AREA STRUCTURE PLAN IN PLACE?

The map below shows the location of all area structure plans in Lacombe County.

Area Structure Plans in Lacombe County



This map shows generally the areas affected by area structure or outline plans. It is the responsibility of the applicant to check with the County's Planning Services Department as to the requirements that apply to development in these different plan areas. All proposals for development are also subject to the provisions of the any applicable Intermunicipal Development Plans, the County's Municipal Development Plan and Land Use Bylaw.

Updated: March 2023

ASP = Area Structure Plan

Plans

- | | | |
|--|-------------------------|-------------------------------------|
| Highway 11 (Joffre Bridge to Haynes) ASP | Milton Morningside ASP | QEII North of Lacombe ASP |
| South of Highway 11 (East of Haynes) ASP | Mirror ASP | Lacombe/Blackfalds Rural Fringe ASP |
| Highway 2A Urban Corridor ASP | Parkview Industrial ASP | Sylvan Lake ASP |
| | | Highway 2 West ASP |

ECONOMIC DEVELOPMENT

LACOMBE COUNTY SPOT *light*

RANGELAND: A GLOBAL BISON SENSATION

Have you heard? A culinary revolution is taking place in Lacombe County at Rangeland Bison and Elk!

In 2000, Armin Muellers started Rangeland Bison and Elk in Lacombe County. Thanks to the hard work and dedication of their team, Rangeland has evolved from a small operation to the thriving business that they are today. Eight years ago, Armin opened his store, Rangeland Meat Shop in Lacombe, located on #103 3402 HWY 12 to sell his products, in addition to products from other local producers. Since this time Rangeland has nearly doubled, expanding Rangeland's footprint to accommodate the growing local, national, and international demand for high-quality and local bison and elk meats.

Today, Rangeland is famous for exhibiting high-quality Alberta meats for meat enthusiasts around the world. Rangeland is well-known and respected among culinary meat enthusiasts and has established itself as a lead purveyor of premium meats in Western Canada.

One of the key driving forces behind Rangeland's success is their rapidly growing fulfillment center. This incredible facility ensures that orders are efficiently processed and delivered across Canada on a weekly basis. With each shipment, Rangeland expands its reach, sharing their exceptional meats with discerning consumers nationwide. Beyond the local market, Rangeland proudly ships their products weekly to the

European Union and United States, reaching customers who crave the distinctive flavors of Canadian bison.

At the core of Rangeland's philosophy lies a deep reverence for the bison, the true stewards of the land. Understanding the vital role that bison play in supporting the environment, Rangeland prioritizes sustainable practices. Without bison, the vast landscapes of rangelands would lose their natural balance. Rangeland's commitment to preserving this delicate ecosystem reflects their profound understanding of the interdependence between the land and its inhabitants.

Community engagement and support are core values for Rangeland. Through their Legacy program at Lakeland College, they actively contribute to the growth of the industry by offering scholarships. This investment in the future ensures that the legacy of quality meats and sustainable practices will continue to thrive for generations to come.

Looking ahead, Rangeland aims to further expand its presence in larger retailers, making their bison products more accessible to consumers seeking high-quality, premium meats. Additionally, they are committed to educating consumers about the environmental benefits of raising bison—a choice that not only benefits personal health but also contributes positively to the planet.

Choosing Lacombe County as their home was a natural decision for Rangeland. When Armin, the company's founder, took over, he collaborated with a group to establish Canadian Premium Meats abattoir facility in Lacombe. The County's favorable business environment, combined with its welcoming hometown feel, made it an ideal location, fostering to growth of the Rangeland Bison brand.

Check Rangeland Bison and Elk out on social media and discover their website:

Check out Rangeland Bison & Elk on social media!

Facebook: /CanRangeBison

Instagram: @rangelandbison

Website: <https://rangelandbison.ca/>



COUNCIL HIGHLIGHTS

September 14, 2023

PUBLIC HEARING BYLAW NO. 1396/23

A public hearing was held for Bylaw No. 1396/23. Bylaw No. 1396/23 is a bylaw of Lacombe County to amend the Lacombe County Land Use Bylaw No. 1237/17 as it relates to districting and the redesignation of land and boundary adjustment on SE 21-39-02-W5M (Kuusamo Krest, Sylvan Lake).

Following the public hearing, Bylaw No. 1396/23 was given second and third reading and so passed.

TOWN OF BLACKFALDS ANNEXATION APPLICATION WITHDRAW REPORT

In 2021, Lacombe County expressed support for an application for Lot 1 Block 2 Plan 032 0195 as well as Lot 2 Block 2 Plan 172 3277, the Mary & Cliff Soper Natural Area, to be included in an annexation to the Town of Blackfalds.

During the negotiation phase of the process, the initiating landowner withdrew the annexation application, and at the August 22, 2023 Town of Blackfalds Council Meeting, Town Council authorized the final Annexation Application Withdraw Report.

By resolution, Lacombe County Council accepted the final Annexation Application Withdraw Report and authorized the Reeve's signature to certify that the report accurately reflects the results of the negotiations. Council authorized the submission of the

fully executed report to the Land and Property Rights Tribunal.

REQUEST FOR ROAD CLOSURE – ROAD PLAN 109 NY

Road Plan 109 NY within the Pt. NE ¼ 07-41-01 W5M was realigned in the summer of 2023. As such, part of the road must be closed to provide for the registration of a new road plan for the new road alignment.

By resolution of Council, the County Manager was directed to proceed with the closure of Road Plan 109 NY. The proposal will be circulated to interested parties for comment and the cancellation request will be presented for consideration at the October 12, 2023 Council Meeting.

WATERSHED RESILIENCY AND RESTORATION PROGRAM (WRRP) GRANT REQUEST

To support the continued public enjoyment and environmental stewardship of waterfront environmental reserves, Lacombe County will submit a grant application to the WRRP for a Surface Water and Wetland Assessment and Monitoring Program. The grant application, in the amount of \$123,000, will include a wetland assessment of 183 acres of land along Gull Lake's eastern shoreline and a nature asset inventory within the Gull Lake Watershed. The application will also include the placement of fixed-

point photography locations around Gull Lake, Sylvan Lake, Buffalo Lake, and Lacombe Lake.

QE II WEST AREA STRUCTURE PLAN TERMS OF REFERENCE

Council endorsed the QE II West Area Structure Plan Terms of Reference and accepted the proposed name change from "Highway 2 West Area Structure Plan" to "QE II West Area Structure Plan". A public meeting to seek feedback on the QE II West Area Structure Plan will be held on November 22, 2023 at 7:00 p.m. at the County Administration Office.

DOW CHEMICAL – REDESIGNATION OF LAND

Representatives of DOW Chemical and BNA Studios provided Council with a presentation on the development concept and request to rezone approximately 9.03 acres of their 122.2 acre parcel on Prentiss Road northwest of the Hamlet of Joffre, from Agricultural 'A' District to Heavy Industrial 'I-HI' District. This rezoning is being requested to facilitate an expansion of their existing rail yard.

MEDICINE LODGE SKI HILL MASTER PLAN

A presentation by the consulting team and representatives of the Medicine Lodge Ski Hill regarding the Medicine Lodge Ski Hill Master Plan was received for information.

COUNCIL HIGHLIGHTS

September 28, 2023

POLICY AD (33) ENVIRONMENTAL COMMUNITY ENGAGEMENT

Amendments to Policy AD (33) Environmental Community Engagement received Council approval.

2024 AGRICULTURAL SERVICES CAPITAL EQUIPMENT PURCHASE

Council approved the 2024 Agricultural Services capital equipment purchases and authorized the County Manager to tender and award the purchase of four offset hitches for the 2024 mowing season.

POLICY REVIEW – AD (29) REPLACEMENT OF CAPITAL EQUIPMENT

Amendments to the Policy AD (29) Replacement of Capital Equipment received Council approval.

POLICY REVIEW – AD (30) FINANCIAL RESERVES

Council approved proposed changes to Policy AD (30) Financial Reserves.

RC (1) APPLICATION GULL LAKE COMMUNITY LEAGUE – OUTDOOR RECREATION AREA PROJECT

As per Policy RC (1), Lacombe County will provide additional funding to the Gull Lake Community League in the amount of \$8,000 for improvements to Centennial Park. This contribution will be funded from the Recreation Capital Assistance Reserve.

TAX PAYMENT PENALTY CANCELLATION REQUEST

A motion that Lacombe County cancel the \$141.53 late payment penalty on tax accounts 410311301, 4103114001, and 4103144001 did not receive Council approval.

OFFER TO PURCHASE PROPERTIES FOR SALE IN THE HAMLET OF MIRROR

By resolutions of Council, the bids for three County-owned properties located in the Hamlet of Mirror were accepted as follows:•

- \$20,000.00, inclusive of GST, for Lots 1-4, Block 10, Plan 7159AI, and Lots 5-10, Block 10, Plan 7159AI.
- \$6500.00 inclusive of GST, for Lot 37, Block 40, Plan 0728572.

PARKLAND REGIONAL LIBRARY PROPOSED 2024 BUDGET

Council approved the 2024 Parkland Regional Library budget as presented.

RESOLUTION – ENHANCING HOME CARE SERVICES FOR RURAL RESIDENTS IN ALBERTA

Council will support the resolution made by Wheatland County with regard to Enhancing Home Care Services for Rural Residents in Alberta by seconding it at the October 6, 2023 CRMA Zone 2 Meeting.

OPPORTUNITY FOR MEETING WITH THE MINISTER OF TRANSPORTATION AND

ECONOMIC CORRIDORS

Council will request to meet with the Honourable Devin Dreesen, Minister of Transportation and Economic Corridors, on November 9, 2023 during the 2023 Fall RMA Convention in Edmonton. Discussion topics for the meeting will include completing the reconstruction and paving of Highway 604 from Range Road 272 west to Highway 792, the Sylvan Lake Regional Wastewater Commission – South Shore Line, and the traffic circle on Highway 11 at the entrance to Eckville.

CRMA ZONE 2 FALL MEETING – OCTOBER 6, 2023

The CRMA Zone 2 Fall Meeting will be held on October 6, 2023 at the Track on 2. County staff are collaborating with Rocky View County to plan the meeting.

STARS

Council was provided with a presentation highlighting the services and operations of STARS.

GOLF CART TRAIL AT SANDY POINT

Dave McMechan and Jason Sabbe, members of the Sandy Point Condo Corporation Board, representing property owners at Sandy Point, provided Council with a presentation regarding a request for a golf cart trail at Sandy Point. The presentation was received for information, and the County Manager was directed to prepare a report and recommendation regarding the request for a golf cart trail at Sandy Point for consideration at a future Council meeting.

COUNCIL HIGHLIGHTS

October 12, 2023

COMMITTEE OF THE WHOLE MEETING NOTES

The following recommendations from the Committee of the Whole meeting held on October 3, 2023 received Council approval:

- The presentation and discussion with RCMP and Rural Red Deer Restorative Justice Program representatives was received for information.
- The County Manager was directed to prepare a report and recommendation regarding amendments to the Library Funding Policy for consideration at a future Council meeting.
- The County Manager was directed to revise the Councillor Remuneration Policy for consideration at a future Council meeting.
- The County Manager was directed to prepare a Council Performance Review format/process for consideration at a future Council Meeting.
- The Gull Lake Regional Trail presentation was received for information and the County Manager was directed to prepare a report and recommendation regarding the Gull Lake Regional Trail for consideration at a future Council Meeting.
- The presentation regarding Data Processing Centers was received for information.

SUBDIVISION S-021-23 BOUNDARY ADJUSTMENT

By resolution of Council, a request to adjust the boundaries of Subdivision S-021-23 was approved, subject to conditions. The boundary adjustment will increase the size of five existing residential lots within the subdivision.

NUMBER OF DWELLINGS ON AGRICULTURAL 'A' DISTRICT PARCELS

The Terms of Reference for the Number of Dwellings on Agricultural 'A' District Parcels received Council endorsement. A meeting to seek public feedback regarding dwellings on Agricultural 'A' District parcels

will be held on November 29, 2023 at 7:00 p.m. at the Lacombe County Office.

POLICY EN (10) RURAL CRIME WATCH

Amendments to Policy EN (10) Rural Crime Watch received Council approval.

REQUEST FOR ROAD CLOSURE 109 NY

Road Plan 109 NY is a road allowance within the Pt. NE ¼ 07-41-01-W5M. In the summer of 2023, the road was realigned. Part of the road must be closed to provide for the registration of a new road plan for the new road alignment.

The proposal was circulated to interested parties for comment; there was no response from adjacent landowners and the affected utility companies responded with no concerns.

By resolution of Council, the closure of Road Plan 109 NY was approved. To complete the road closure process, the request will be forwarded to Alberta Transportation for approval and then registered with Land Titles.

REQUEST FOR ROAD CLOSURE AND SALE 1756 CO

Road Plan 1756 CO is a road diversion within Pt. NW 33-41-22 W4M. Daniel Hucal is requesting the closure and sale of Road Plan 1756 CO so it can be consolidated with his property. The proposed closure will see 1.03 acres closed and consolidated with the Pt. NW 33-41-22 W4M (157.38 acres).

The County Manager was authorized to proceed with the closure of Road Plan 1756 CO. The proposal will be circulated to interested parties for comment, and a report on the comments and cancellation request will be presented at the November 14, 2023 Council meeting.

BROWNFIELD SOLAR OPPORTUNITY – SUNALTA POWER INC.

SunAlta Power Inc. has requested the assistance of Lacombe County to identify a suitable site in the

County for the development of a brownfield solar facility. SunAlta Power Inc. is seeking sites that are suitably zoned for solar facilities, are minimally 25 acres in size, have flat or low slope topography, are in close proximity to an electrical distribution grid, and are available for purchase or 25-year lease.

The request was received for information.

POLICY AD (22) FCSS PROGRAMS

Council approved proposed changes to Policy AD (22) FCSS Programs.

HIGHWAY 11 & 766 INTERSECTION – TRAFFIC CIRCLE

Lacombe County will provide a letter to the Town of Eckville indicating strong and continued support for the construction of a roundabout at the intersection of Highway 11 and Highway 766.

MEETING WITH THE MINISTER OF ENERGY RE: ALPHABOW

In response to an invitation from Ponoka County, Council will provide support and representation for a potential meeting with the Honorable Brian Jean, Minister of Energy and Minerals, to discuss concerns regarding the Alberta Energy Regulator and AlphaBow.

BYLAW NO. 1397/23 SOUTHEAST BENTLEY AREA STRUCTURE PLAN

Bylaw No. 1397/23, a bylaw of Lacombe County to adopt the Southeast Bentley Area Structure Plan, received first reading. A public hearing for Bylaw No. 1397/23 will be held on November 14, 2023 at 9:00 a.m.

RED DEER RIVER MUNICIPAL USERS GROUP

By resolution, Council expressed support for the Red Deer River Municipal Users Group in their funding application for a feasibility study to look at options for the Red Deer River Sub-Basin to meet future demands of the region.



Lacombe County presented the Medicine River Rural Crime Watch Society with a cheque for \$3,500 as part of the Special Projects Grant for Rural Crime Watch Groups. The County recognizes the important role local Rural Crime Watch Groups play in reducing crime and increasing awareness. Next month, the Medicine River Rural Crime Watch Society is hosting a presentation featuring Sgt. Kerry Shima of the Northern Alberta Internet Child Exploitation (I.C.E.) Unit. **Learn more about it on Page 2.**

Regularly Scheduled Meetings for Lacombe County Council

Committee of the Whole - First Tuesday of every second month at 9 a.m.

Council & MPC - Second and fourth Thursday of every month, starting at 9 a.m..

The public and media are welcome to attend all Council & MPC meetings. An agenda will be posted to the website prior to the meeting.



Council Highlights & Minutes can be found on our website at www.lacombecounty.com/en/our-government/agendas-and-minutes.aspx

November 1-7 is Carbon Monoxide Awareness Week

Carbon monoxide is colourless, odourless and deadly. You can beat this silent killer by taking a few simple steps to keep your family safe. Your first step is to install a carbon monoxide alarm.

What is carbon monoxide?

- Carbon monoxide (CO) is known as the silent killer because it is an invisible, tasteless and odourless gas that can be deadly.
- CO is produced when fuels such as propane, gasoline, natural gas, heating oil or wood do not burn completely in fuel-burning appliances and devices such as furnaces, fireplaces, hot water heaters, stoves, barbecues, portable heaters and generators or vehicles.

What to do if the CO alarm sounds

- Exposure to CO can cause flu-like symptoms such as headaches, nausea and dizziness, as well as confusion, drowsiness, loss of consciousness and death.
- If your CO alarm sounds and you or other occupants suffer from symptoms of CO poisoning, get everyone out of the home immediately. Then call 9-1-1 or your local emergency services number from outside the

building.

- If your CO alarm sounds and no one is suffering from symptoms of CO poisoning, check to see if the battery needs replacing, or the alarm has reached its "end-of-life" before calling 9-1-1.

How to prevent the build-up of CO in your home

- Ensure fuel-burning appliances, chimneys and vents are cleaned and inspected by professionals every year before cold weather sets in.
- Ensure vents for the dryer, furnace, stove, fireplace and other fuel-burning appliances are always be clear of snow and other debris.
- Gas and charcoal barbecues must be used outside, away from all doors, windows, vents, and other building openings. Never use barbecues inside garages, even if the garage doors are open.
- Portable fuel-burning generators must be used outdoors in well-ventilated areas away from windows, doors, vents and other building openings.
- Ensure all portable fuel-burning heaters are vented properly, according to the manufacturer's instructions.

tions.

- Never use the stove or oven to heat your home.
- Open the flu for adequate ventilation before using a fireplace.
- Never run a vehicle or other fueled engine or motor inside a garage, even if the garage doors are open. Always remove a vehicle from the garage immediately after starting it.

Testing and replacing CO alarms

- Test CO alarms every month by pressing the test button.
- Replace batteries every year. Replace CO alarms according to the manufacturer's instructions.

Know the sound of the CO alarm

- Your CO alarm sounds different than your smoke alarm. Test both alarms monthly and make sure everyone in your home knows the difference between the two alarm sounds.
- Know the difference between

tween the CO alarm's low-battery warning, end-of-life warning and an emergency alarm – consult the CO alarm manufacturer's instructions.

Carbon monoxide is an invisible, silent, odourless killer.

WAKE UP.

Carbon monoxide alarms save lives.

Learn more at [ATCO.com/CO](https://atco.com/CO)

Safety is a core value at ATCO. That's why during the month of November, we are encouraging Albertans to get a carbon monoxide alarm for their home.

ATCO

WINTER IS COMING! | Winterizing Your Septic Systems

Did you know that a holding tank or "pumpout" septic system left unused for more than 72 hours may not have the anaerobic bioactivity to generate enough heat preventing winter freezing? If you plan on using this style of septic system during the winter months, here are some long-term steps needed to protect your system from freezing:

- All components <2.7 meter (9 feet) deep must be insulated with spray or rigid foam to prevent freezing. This foam adds a thermal barrier between frozen ground and non-frozen ground (frost line). A rough "rule of thumb" is 1 inch of insulation equals 1 foot of ground cover. You always want a minimum of 2.7 m (9 feet) of frost coverage in Alberta!
- Don't forget to insulate the plastic lid of your holding tank. An uninsulated lid can allow heat from bioactivity to escape even if the sides and top of the holding tank is insulated. For concrete lids and tops, spray foam applied by a professional can be very effective in preventing heat loss.

- Make sure to use electric heat trace around the any piping, check valve or shutoff valve <2.7 meter (9 foot) depth if your system is connected to a communal wastewater system. As these systems DO NOT have a drain hole to empty the pipe between pumping cycles like rural system have. Many are <1 meter (3+ feet) from the top of the holding tank lid which is in the frost zone.

WINTERIZING FOR EXTENDED HOLIDAYS OR WINTER MONTH ABSENCES

- Clean your holding tank with a garden hose and spray nozzle. Pump down your tank by holding the float in the upright position with a long hook on pole. When you see the bottom of the pump, lay the float back down. This process can be done by a professional when they're performing your annual inspection of the pump, valve and check valve.
- Add clean water back into holding tank and ensure pump is submerged in water.
- Add potable RV antifreeze only to the water in the tank, follow manufacturers recommendations for volume and strength.

- Manually run the pump by holding the float in the upright position for a few seconds to circulate RV anti-freeze into discharge piping, check valve and service line.
- Leave your holding tank pump active when your away DO NOT unplug! High efficiency furnaces, dehumidifiers, RO/water softener backwashes, tap/toilet leaks, or even a family member visiting forgetting to let you know can quickly fill or overflow a holding tank with an unplugged pump when you're not there.
- Always leave your alarm system active 24/7 to notify if there's a problem!

Some alarm systems have a call out and text feature so you can be immediately notified if there's a problem! Contact your local installer or phone provider to take advantage of this timely benefit.

- Have your daily residence monitor always check for system alarms and water movement in systems not blown out for the winter.
- If you've closed any valves in or after the holding tank, never run a pump with valves closed on the intake or discharge side of your system, this may damage the pump and piping!





To report oil and gas operational complaints or emergencies call:
1-800-222-6514

For questions related to AER regulations, requirements, or processes call:
1-855-297-8311

The AER ensures the safe, efficient, orderly, and environmentally responsible development of oil, oil sands, natural gas, coal resources, geothermal, and brine-hosted mineral resources over their entire life cycle. This includes allocating and conserving water resources, managing public lands, and protecting the environment while providing economic benefits for all Albertans.

inquiries@aer.ca aer.ca

ALBERTA PENSION PLAN: WHAT'S IN IT FOR YOU?

YOUR PENSION, YOUR CHOICE.



Albertans can now review an independent report on the potential creation of an Alberta Pension Plan (APP) ahead of provincewide engagement.

The report, created by the independent consultant LifeWorks, suggests an Alberta Pension Plan could save Albertans billions each year, with lower contribution rates, higher benefits and stronger benefit security for families and retirees.

Now it's up to you: read the report, ask questions and provide feedback on what the next steps should be.

Between now and spring 2024, an engagement panel will collect feedback from Albertans on your thoughts, suggestions and concerns about a provincial pension plan, then submit a report to government on what Albertans had to say.

Nothing will change before a referendum is held, so visit albertapensionplan.ca to read the report, get more info on what an Alberta Pension Plan could look like, learn about provincewide engagement and provide your feedback.

Any Albertan, no matter where they live, can participate in the town halls by going to www.albertapensionplan.ca.

UPCOMING TELEPHONE TOWN HALLS

- Southern Alberta – Tuesday, Oct. 24, 6:30 p.m. to 8 p.m.
- Calgary and surrounding area – Thursday, Nov. 9, 6:30 p.m. to 8 p.m.
- Edmonton and surrounding area – Thursday, Nov. 16, 6:30 p.m. to 8 p.m.
- Central Alberta – Wednesday, Nov. 22, 6:30 p.m. to 8 p.m.

Lacombe Regional Waste Services Commission (LRWSC) Transfer Stations Hours of Operation

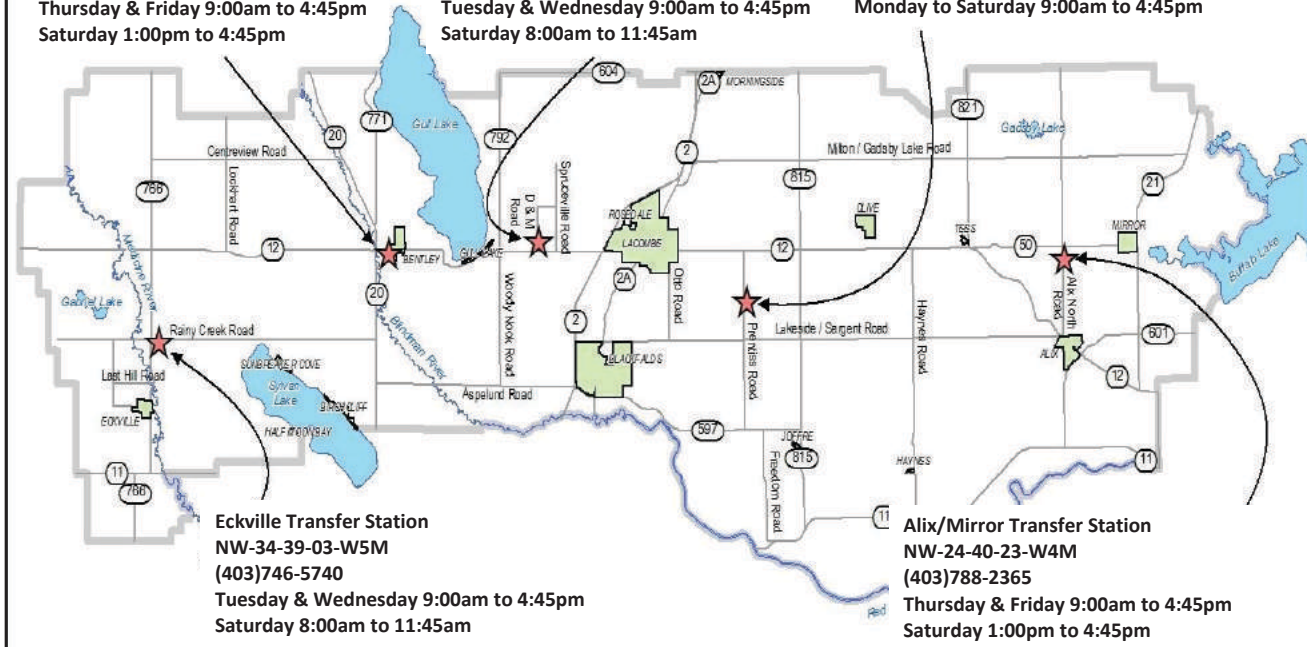
Bentley Transfer Station
NE-22-40-01-W5M
(403)748-3961
Thursday & Friday 9:00am to 4:45pm
Saturday 1:00pm to 4:45pm

Spruceville Transfer Station
NW-29-40-27-W4M
(403)782-2828
Tuesday & Wednesday 9:00am to 4:45pm
Saturday 8:00am to 11:45am

Prentiss Landfill/Transfer Station
NW-07-40-25-W4M
(403)782-5300
Monday to Saturday 9:00am to 4:45pm

Eckville Transfer Station
NW-34-39-03-W5M
(403)746-5740
Tuesday & Wednesday 9:00am to 4:45pm
Saturday 8:00am to 11:45am

Alix/Mirror Transfer Station
NW-24-40-23-W4M
(403)788-2365
Thursday & Friday 9:00am to 4:45pm
Saturday 1:00pm to 4:45pm



All transfer stations are closed on the following statutory holidays:
New Years Day, Thanksgiving, Good Friday, Remembrance Day,
Christmas & Boxing Day.

Maintenance on Provincial Highways

Please note: Alberta Transportation maintains and operates ALL NUMBERED highways in the County (i.e. Hwy 12, Hwy 20, Hwy 597, Hwy 815, Hwy 601, Hwy 2A, etc.).

If you see any issues or have any concerns on these roadways, please contact:

Mainroad Alberta Contracting LP
1-877-875-3263

AROUND THE COUNTY

Make a **SPLASH** at the Kinsmen Aquatic Centre 5429 53rd Street, Lacombe AB

What's Happening at the pool:

- October 24 - Winter program registration opens at 8:30 am
- October 27 - Halloween Bash, 5:30 - 9:45 pm swim and haunted house. Tickets on sale now!!
- November 11 - Remembrance Day, holiday hours will apply, public swim 1:00 - 5:00 pm only
- November 25 - FREE public swim 5:15 - 8:15 pm for Light Up Lacombe

For more information on the KAC schedule, pool rentals and advanced courses call 403.782.1277 or visit www.lacombe.ca/pool.



WHAT WE DO

Alix and Area Community Resource Centre

Highlights

2023 Fall Giving Campaign: October - December

We are currently preparing for our first Winter Escapes, online auction, Nov 1-8, in conjunction with the Fall 2023 Giving Campaign. Please let us know if you are interested in donating an auction item or a monetary donation towards a package by October 25. Funds raised will help with the continuing success of programs like: Information & Referral, Resource Navigation, Family Wellness, Alix After-School, Child Safety Week, Youth Mental Health, Senior Fun, Wise Owls, Income Tax Assistance, Grief Support, Internet Cafe, Adult/Senior Outings, Alix Food Bank, Extended Learning Program, summer programming and holiday events. Please contact Jill, 403-588-5199.

Baby Clinic: November 22

Hosted monthly, please check our schedule to confirm which day appointments can be made. For routine child immunizations ONLY. Please call: Stettler Health Unit, 403-742-3326.

Ongoing and for Everyone!

Fresh veggies are delivered weekly to the Centre, typically available for pick-up on Tuesday mornings. Thank you Pic N Pac for the generous donation! Free for everyone and while quantities last. Please limit to one bag per person to help items go further.

We're Hiring: Family Wellness Worker Position

Assignment: Part-Time position (15 hrs/wk approx) in Alix, AB. Specific details regarding this position can be obtained from: Alix & Area Community Resource Centre. Interested candidates are invited to submit applications to: Jill Hillman, Executive Director Alix Mirror Wellness Supports Society Box 715 Alix, AB T0C 0B0 Fax: (403) 747-2082

Services Available

- Information & Referral
- Resource Navigation
- Volunteer Services
- Family Wellness
- Meals on Wheels
- Community Services
- Adult Learning
- Alix Food Bank
- Wise Owls

alixmirrorwellness@gmail.com

Follow us on Facebook
@AlixandAreaCommunityResourceCentre

www.alixcrc.com

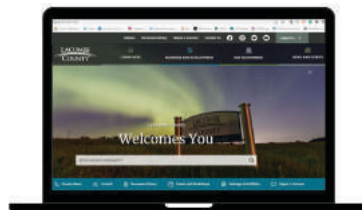


STAY IN THE KNOW!



<https://subscribe.lacombecounty.com/Subscribe> to receive emails on:

News/Announcements Events
Council Meetings
Safety Alerts
Construction Notifications



OR...Subscribe to individual pages of interest

Monday to Thursday 10:00 AM - 4:00 PM

Closed all statutory holidays

Bay 1, 5008 50 Ave, Alix, AB

403-396-3369

ST. STEPHEN PARISH

Fall Supper

SUNDAY - OCTOBER 29, 2023

Two Sitzings @ 4:30 & 6:30

At: St. Stephens Parish Hall
5128 - 53 Street | Lacombe, AB

COST: \$25.00 PER TICKET

TICKETS AVAILABLE FROM

MARILYN MARIANNA PARISH OFFICE
403-358-9384 403-782-5576 403-782-3514

RESERVED TABLES OF 8 AVAILABLE
WINE & BEER AVAILABLE

gull lake centre

Experience the beauty of Gull Lake Centre.

Gull Lake Centre is designed with event flexibility in mind.

Our incredible facilities and amenities can be used by groups from 20-250 people. Whether you are planning a conference, retreat, or family reunion, our space is versatile and accommodating.

We are open year round for event rentals! For more information on pricing, specific amenities and rental spaces, visit

gulllakecentre.ca/rentals

LACOMBE PERFORMING ARTS CENTRE PRESENTS

Under \$100 Art Market 2023

GREAT GIFT IDEAS! SOMETHING FOR EVERYONE!

NOVEMBER 23: 4 PM - 9 PM
NOVEMBER 24: 10 AM - 6 PM
NOVEMBER 25: 10 AM - 4 PM

LACOMBE MEMORIAL CENTRE

LACOMBEPAC.COM FOR MORE INFO!

fcss
Lacombe & District
Family and Community
Support Services

Lacombe Connex

LACOMBE COUNTY

Did you know?
County residents within 20 km of Lacombe can book the bus for errands & medical appointments.



Please call 403-782-6637 for more information or to reserve your spot

HOME SUPPORT SERVICES FOR SENIORS



Home Support is available to eligible seniors needing assistance with light housekeeping in Lacombe, Clive and Lacombe County.

- ✓ Trained & screened Home Support Providers
- ✓ Weekly
- ✓ Bi-weekly
- ✓ Monthly

Services Offered

- Laundry
- Kitchen
- Bathrooms
- Living Rooms
- Dusting
- Mopping
- Vacuuming
- Meal prep assistance

Did you know you may qualify for reimbursement up to \$1300 a year for housekeeping. Ask us how.

Contact Lacombe & District FCSS: (403) 782-6637
Or Clive FCSS (Tuesdays, Thursdays) (403) 784-2020

Supported by: **fcss** Lacombe & District Family and Community Support Services, **LACOMBE COUNTY**, **Clive**



lacombe memorialcentre

The perfect place for people to connect.

Book your upcoming event now!

- training/workshops • meetings
- anniversaries • weddings
- celebrations of life • exercise classes

Visit www.lacombe.ca/lmc or call 403-782-6668

Home of Anna Maria's Cafe, Mary C. Moore Public Library, Lacombe & District FCSS and the Lacombe & District Chamber of Commerce.

Need financial assistance with room rentals?
See if you qualify at lacombe.ca/grants

CENTRAL ALBERTA REGIONAL Assessment Review Board

New Members Needed Apply Today!

Are you interested in making fair decisions on property assessments?

The Central Alberta Regional Assessment Review Board is an impartial, independent board responsible for issuing evidence based decisions on complaints relative to property assessments.

APPLY IF YOU HAVE

- experience serving on administrative boards or quasi-judicial boards
- professional or legal writing abilities and computer skills
- a flexible schedule, with availability during the day to attend training and hearings (about three days a month)
- the ability to organize and absorb large amounts of information then analyze and weigh evidence

DEADLINE TO APPLY
Oct. 30 to Nov. 20, 2023
Apply online at www.reddeer.ca/RARB

QUESTIONS?
403-356-8907
reddeer.ca/RARB

servus credit union
PUBLIC LIBRARY BLACKFALDS

Blackfalds' Servus Credit Union Public Library

Free memberships for Lacombe County patrons. When signing up provide your legal land description

Programming

- Baby & Toddler Time** Ages 0-3
- Tales & Tunes** Ages 4-6
- Reading Buddies** Ages 6-10
- Youth Chess Club** Ages 7+
- Adult Chess Club** Ages 16+
- Adult Book Clubs** Ages 18+
- Dungeons and Dragons tabletop roleplaying games**
- Multiple Youth & Adults sessions*

***For more program information check out our website and social media**

Borrowing
Our library card gives you access to a variety of services, eResources such as eAudio, eBooks, eMagazines & more!

Visit us on our website & social medias



Hours

Sunday	1pm - 5pm
Monday	10 am - 8 pm
Tuesday	10 am - 6 pm
Wednesday	10 am - 8 pm
Thursday	10 am - 6 pm
Friday	10 am - 6 pm
Saturday	10 am - 5 pm

Contact
403-885-2343
www.blackfaldslibrary.ca
Eagle Builders Centre 5302 Broadway Avenue, Blackfalds, AB T0M 0J0

PotLuck Play

Oct.25/23
6:00-8:00 pm

COME WITH YOUR WHOLE FAMILY FOR A FREE DINNER!

DO YOU CHILDREN 0-18?
THEN COME ON BY!
BASEMENT OF BENTLEY TOWN HALL

Soup/Buns




Contact:
Carolyn: 403-896-3915
frnlacombe@gmail.com

NEW PROGRAM

Games

Afternoon
Scrabble
Euchre
and more!

every other Thursday 2pm
Oct 5 & 14
Nov 2, 16, 30

Free For Adults

Hosted by Mary C Moore Public Library in the Kinsmen Room 2nd floor of the LMC



MORNINGSIDE HALL

Presents a Family
HALLOWEEN PARTY



FRIDAY OCTOBER 27, 2023, 7 PM TO 11 PM

PLEASE COME DRESSED IN A COSTUME

PLEASE BRING A SHAREABLE SNACK OR TREAT.

COFFEE, TEA AND JUICE PROVIDED

CASH BAR

Baby Bits

Friday Afternoons 1-2pm
Bentley - Basement of town office
Oct. 20 & 27
Nov. 3, 10, 17, 24

Come join other moms as we learn some helpful, hands-on tools to help our babies. We will learn some infant massage techniques, soothing routines, parent/baby attachment tools, bedtime routines - how to help your baby, and how music/story time helps our babies.



Please Register:
403-896-3915
frnlacombe@gmail.com




OCT 27 10AM

IT'S SPOOKY TIME!

LIBRARY HALLOWEEN PARTY

FOR FAMILIES WITH CHILDREN OF ALL AGES.
DROP IN PARTY WITH CRAFTS, ACTIVITIES & SNACKS
IN THE KINSMEN PROGRAM ROOM (UPSTAIRS FROM THE LIBRARY)
SATURDAY, OCTOBER 27 10AM-NOON



Lacombe & District Chamber of Commerce

PASSPORT TO Christmas

Sign your business up today!
INFO@LACOMBECHAMBER.CA
403.782.4300



Bentley Seniors Drop In

55+

Over The Hill & Loving The View

Seniors Drop In

located in the Town Office 4918-50 Avenue

The Seniors Drop In welcomes everyone 55+ to join us for our regular Tuesday/Thursday afternoons, and/or to take advantage special programming (no charge) on Mondays/Wednesdays

<ul style="list-style-type: none"> Mondays 10 to 11 am Tuesdays 1 pm Wednesdays 10:45 to 11:45 Thursdays 1pm Potluck 	<ul style="list-style-type: none"> Seated Range of Motion Exercises (starts Sept 11) Socialize/cards/games Chair Yoga - light movements Socialize/cards/games Last Tuesday of each month at Noon
--	--

Special Outings - dinner theatres and more. Have an idea? Let us know.

Drop In membership \$10/year

PARTNERS:
BENTLEY SENIORS DROP IN, FCSS/TOWN OF BENTLEY, EDMONTON SENIORS CENTRE, BRENDA STRAFFORD FOUNDATION/REC@HOME

Registration required for Seated Range of Motion Chair Yoga
Move your body, make connections & socialize!
Call 403.748.2160

WE HAVE FUN!



Bentley Stay & Play

Located in the basement of Town Office

We WELCOME all Families/Caregivers
with children 0-6 and older children on PD days

Fridays 9:30 to 11:30

Contact Community Services 403.748.2160
OR our facilitator Miss Carolyn 403.704.3315 parentingproactively101@gmail.com



BENTLEY BOUTIQUE

Use west entrance beside bay door.
Bentley Long Term Care Facility
4834 - 52 Avenue, Bentley

Open Tues/Thurs 10-12 & 1-3

Items for all ages & sizes.

Next to new clothing donations welcome!

Volunteer Coordinator Sandy 403.318.0270



Bentley Community Services 403.748.2160

Upcoming Events @ HAYNES HALL

Oct. 27: Halloween Social (Adults Only)
Doors Open at 8pm



SENIORS' EXPO

Lacombe's first Seniors Expo!
Guest speakers, breakout sessions, trade show, and more!

Monday, October 23 \$2.00/person
7-9 pm - BodyBreak with Hal and Joanne

Limited Seating!

Tuesday, October 24 - \$20.00/person
8:30 am - 4:00pm - Seniors Expo - Sessions, Speakers & Trade Show - breakfast and lunch included

LMC, Lacombe AB

REGISTER TODAY!

www.lacombefcss.net

403-782-6637



Open:
Mon. & Wed. 10am - 8pm
Tues., Thurs. & Fri. 10am - 6pm
Sat. 10am - 5pm
Sun. 1pm - 5pm

Memberships are free at The Blackfalds Public Library for Blackfalds and Lacombe County residents!

We have a lot of exciting free programs for all from babies to adults. Check out our socials for our current program calendars and pop up events.

@BLACKFALDSLBRARY



Located in the Eagle Builders Centre
5302 Broadway Avenue
403-885-2343

Camp L.G. Barnes CHRISTMAS FEAST



December 12, 13 or 14 - 2023
Join us for Christmas lunch 12 pm to 4 pm.
Guests \$25 / Support staff \$15.00
RSVP to info@lgbarnes.org
For more information call 403 748 4211

01

BEVERAGES

- Sparkling Juice
- Apple Cider
- Egg Nog
- Coffee, Tea, Hot Chocolate

02

FIRST COURSE

- Salad
- Cheese / Crackers

03

MAIN COURSE

- Turkey / Ham
- Stuffing, Potatoes, Gravy
- Vegetables

04

DESSERT

- Assorted squares / tarts

GENEALOGY CLUB

Hosted by Mary C Moore Public Library

For all family history enthusiasts. These club meetings are a place to get together and share tips, advice, and stories related to genealogy.

Meetings are on the second Tuesday of the month at 4:30-6:30pm

Drop in, no registration required

Contact: Miranda miranda.cl@prl.ab.ca with any questions on this program

Next Meeting:

Nov 14

Kinsmen Room, LMC
*upstairs from the Library



The Opportunity?

To set up the Senior Drop In zoom sessions for



Monday - Range of Motion 10am to 11am

Wednesday - Chair Yoga 10:30am to noon

Fridays - (TBA) Range of Motion

The Perks?

- Be a valued volunteer - contributing to the health and wellness of those attending.
- Hang out with a great group of people and partake in the sessions!

The Commitment?

- Choose the days you can commit, although weekly would be awesome!
- If you are not aware of how to set up the computer & zoom, don't let that keep you away. We are happy to teach you! 😊



These programs are offered free for 55+



NOVEMBER 2023

Sun	Mon	Tue	Wed	Thu	Fri	Sat
29	30	31 HALLOWEEN	NOV 1	2 Internet Safety Presentation (Page 2)	3	4
5	6	7	8	9	10 County News Submissions Due	11 Remembrance Day
12	13 Office Closed (Remembrance Day in lieu)	14 County Council 9 AM	15	16 Agreements in Agriculture (Page 9)	17 County News Published	18
19	20	21	22 Public Meeting: QEII West ASP (Page 11)	23 County Council 9 AM	24 Budget Meeting	25
26	27	28	29 Public Meeting: Dwellings in Ag Area (Page 1)	30	DEC 1	2

Upcoming Events: December 5, 2023 (Committee of the Whole) December 14, 2023 (County Council)
December 25-27, 2023 (Office Closed for Christmas)

Help us promote YOU!



Do you know a **business, person, place or volunteer** you want to see profiled in County News?

Do you have a photograph you want to share?

If so, email **communications@lacombecounty.com** with your ideas, photographs or stories.

We'd love to hear from you!



Proudly Maintaining Your Highways
Counties: Lacombe | Ponoka | Red Deer | Wetaskiwin
Report road conditions 24/7
1 877 875 3263



Lacombe County Directory

RR3, Lacombe Alberta T4L 2N3 www.lacombecounty.com		
Department Numbers:	Main Office - 403-782-6601	
	Planning Services - 403-782-8389	
	Community Services - 403-782-8959	
	Operations - 403-782-8379	
	Public Works Shop - 403-782-3567	
General		
After Hours Emergency Answering Service		403.357.1210
Administration Fax		403.782.3820
Public Works Fax		403.782.5356
For Service Requests, see our website - or phone the switchboard at 403-782-6601		
Senior Administration		
Tim Timmons, County Manager ttimmons@lacombecounty.com		Call 403-782-6601 to speak with the County Manager or with a Lacombe County Director
Michael Minchin, Director of Corporate Services mminchin@lacombecounty.com		
Bill Cade, Director of Operations bcade@lacombecounty.com		
Dale Freitag, Director of Planning Services dfreitag@lacombecounty.com		
Dion Burlock, Director of Community Services dburlock@lacombecounty.com		
Council		
	Home	Cell
John Ireland, Div. 1 (jireland@lacombecounty.com)		403.392.3981
Brenda Knight, Div. 2 (bknight@lacombecounty.com)	403.788.2168	403.550.2168
Barb Shepherd, Div. 3 (bshepherd@lacombecounty.com)		403.340.9724
Dwayne West, Div. 4 (dwest@lacombecounty.com)		403.660.2328
Ken Weenink, Div. 5 (kweenink@lacombecounty.com)		403.350.8014
Allan Wilson, Div. 6 (awilson@lacombecounty.com)		403.506.3735
Dana Kreil, Div. 7 (dkreil@lacombecounty.com)	403.746.3607	403.358.9400

Follow us online, and stay up-to-date on Lacombe County news, events and other information!



facebook.com/
LacombeCounty



instagram.com/
lacombecounty



twitter.com/
LacombeCounty



youtube.com/
LacombeCounty



www.lacombe
county.com

Phone | 403.782.6601 Email | info@lacombecounty.com Fax | 403.782.3820

COUNTY NEWS

is published by Lacombe County and printed by CentralWeb.
If you have feedback or story ideas, please contact:
Nicole Plewis, Communications Coordinator
communications@lacombecounty.com
403.782.6601