

County News

Friday, March 22, 2024 | Volume 3

Success Grows Here in Agriculture

Lacombe County is a proud rural municipality with a successful agricultural community – hence, our motto, *Success Grows Here!* The County sees the integral importance of the agricultural industry in the times of growing food insecurity and increasing global population. Lacombe County is committed to supporting and empowering its agricultural producers to continue doing their part to feed the world.

Following the 2021 census, Lacombe County was reported to have 1,010 farms (out of 45,505 farms in the province). Within our boundaries are 335 oilseed and grain farms and more than 100,000 head of cattle - making Lacombe County a significant player in the province's agriculture industry. In addition to primary agriculture, there are also a considerable number of agriculture-based businesses and value-added processing facilities which contribute to the diversity and economy of the municipality and the region.

WHY IS IT IMPORTANT TO PROTECT AGRICULTURAL LANDS?

Once agricultural lands are converted to other uses, it is extremely difficult or even impossible to return them to their original state. There are a myriad of reasons for why agricultural land should be protected.

Some key reasons include:

- **AGRICULTURAL PRODUCTS** – Our food comes from high-quality fertile farmland. Canada is a net food exporter, meaning we provide food to the rest of the world! From the lush fields of wheat to the vibrant fields of canola, our agricultural products are renowned for their quality and taste. With a commitment to sustainable farming practices, agricultural producers work hard to ensure that our food is not only delicious but also produced in an environmentally friendly manner. So, the next time you cook with canola oil or savor a slice of freshly baked bread, remember that it all started right here on our fertile soil.
- **ECOSYSTEM SERVICES** – The County's agricultural area includes wetlands, forested areas, grasslands, and lakes/rivers. These features play a crucial role in carbon sequestration, air purification, biodiversity support, water filtration, soil stabilization, provide important habitat, and so much more! By recognizing the importance of these ecosystem services, we can work towards preserving and enhancing the County's agricultural areas for the benefit of current and future generations.

(Continue reading on page 3)

Lacombe County to host voluntary Farm Vehicle Safety checks: April 3 & April 4

Lacombe County is excited to announce a two-day voluntary farm vehicle safety check event, taking place at our Rainy Creek (April 3) and Tees (April 4) satellite public works shops. This initiative is part of our ongoing efforts to enhance the safety and awareness within our agricultural industry, while also promoting 'Vision Zero'—a key component of the Lacombe County Traffic Safety Plan.

'Vision Zero' embodies our belief that no loss of life on Alberta's roads should be considered acceptable. By conducting Farm Vehicle Safety checks, we are taking a significant step towards ensuring our community remains safe and fostering

a positive relationship with our local producers.

"Our local agricultural producers play a crucial role in our community, and it's imperative that they can conduct their operations without the fear of being stranded or, worse, involved in an accident due to equipment failure," said Ray Kawai, Lacombe County Community Peace Officer. "These checks are about education and collective effort to enhance road safety for everyone."

In Alberta, farm vehicles are held to the same equipment regulations as commercial vehicles. Lacombe County's initiative aims to collabo-

rate with our farming community to not only ensure compliance but also promote a positive image of our agricultural sector.

At the event, Commercial Vehicle Inspectors will be available to conduct thorough safety inspections in line with the Commercial Vehicle Safety Alliance standards. Any safety violations identified will be detailed in a personalized vehicle inspection report, with guidance provided on necessary repairs..

DETAILS, DATES AND LOCATIONS ON PAGE 5

What's Inside

- 2 **MEET YOUR COUNCILLORS**
Upcoming Ratepayer meetings
- 2 **PUBLIC HEARING | Reserve Land Designation (Bylaw No. 1408/24)**
- 4 **BOOK TODAY | Farm Vehicle Safety Checks April 3 & 4.**
- 4 **It's Fire Permit Season!**
- 5 **MIRROR CORNER | Events & Info**
- 6 **World Water Day is March 22**
- 7 **2024 Dust Control Program**
- 8-11 **Ag News & Events**
- 11 **Farmer's Pesticide Certification**
- 12-13 **Subdivision & Development Activity Map**
- 13 **PUBLIC HEARING | Village of Alix/ Lacombe County IDP**
- 14 **Seasonal Jobs!**
- 14 **Insurance Reminder for Fire Response**
- 15 **NOVA Chemicals Open House**
- 17 **County Business SPOTlight**
- 18-19 **Council Highlights**
- 20-23 **Around the County: Events & Info**

www.lacombecounty.com



Publication Mail Agreement No 43726064

Return undeliverable items to:
Lacombe County
RR3, Lacombe, AB T4L 2N3

Lacombe County is holding a PUBLIC HEARING

Reserve Land Designation (Bylaw No. 1408/24)

Lacombe County is holding a **PUBLIC HEARING** to hear your feedback on the proposed bylaw changes that would update lands designated as Reserve under previous iterations of the *Municipal Government Act* (MGA) to the appropriate designation under the current MGA and designate lands which are managed as Municipal Reserve, Environmental Reserve, and Public Utility Lot to the appropriate designation.

Bylaw 1408/24 will direct the management of County lands by clarifying the land's intended use, and bring additional legislative support to Policy RC(8) and Bylaw 1398/23.

PUBLIC HEARING PURPOSE:

A Public Hearing presents the proposed bylaw, and gives members of the public an opportunity to speak to Council about it and provide input before adoption. Your input is valued and encouraged. Anyone wishing to comment on the proposed bylaw changes will have an opportunity to do so at the Public Hearing.

The Public Hearing will take place:

April 25, 2024 | 9:00 AM

Lacombe County Council Chambers

You can find information for the properties on our website (scan the QR code below) at www.lacombecounty.com or by calling 403-782-8959.

Lots proposed to be designated as Environmental Reserve:

7720854;;R1	7822831;1;R9
7720043;;R1	7822831;1;R10
1836NY;;R	567TR;1;R1
5;3;39;22;NW	4238TR;A;R1
5;3;40;4;SW	914MC;1;R
892290;;1	1183MC;1;R
4;22;39;4;SE	5600MC;A;32R
4;24;41;23NW	4239RS;A;R
7820427;;R1	0924769;1;1
7821729;;R1	2020776;1;2
5034AX;A,B	2222602;1;1
7240AN;RLY;39	2322180;1;2
5;4;39;1;SE	3934AF;RLY;39
2335NY;;R2	3934AF;RLY;39
3575MC;B;R	2335NY;;R1

Lots proposed to be designated as Municipal Reserve:

1620098;1;2	7520233;1;R1
856MC;2;R2	1970EO;;P
4;22;39;31;NE	7822831;2;R5
7702AY;1	3737KS;P1
5823BK;R	3737KS;P2
RN18;3;11	1628CL;R
6729NY;;E	1483MC;2;1R
5665MC;4;R	1483MC;2;8R
856MC;;R3A	1483MC;2;18R
856MC;;R5	7722679;1;55R
856MC;6;R6	7722679;1;65R
856MC;;R4	7521105;;R13
856MC;;R3	1723277;2;2
	0620731;1;4

Lots proposed to be designated as Public Utility Lot:

2220542;1;1
2322171;1;3MR



Scan the QR code above for information and maps related to this Public Hearing.

HOW DO I PARTICIPATE?

Participate in the public hearing to voice your opinion. There are 3 ways you can provide input!

1) Attend and speak in person:

Lacombe County Office, Council Chambers.

Located 2.5 miles west of Highway 2 at the intersection of Spruceville Road (Range Road 27-4) and Highway 12.

2) Attend and speak virtually:

Instructions for accessing the meeting by phone or online can be found on our website (www.lacombe-county.com)

3) Provide written comments:

If you are unable to attend the Public Hearing, but want to provide input, send your comments to **Jennifer Berry, Environmental Coordinator**, prior to **April 12, 2024**. Your comments can be sent by:

EMAIL: jberry@lacombecounty.com
FAX: 403-782-3820, or
MAIL: RR 3, Lacombe AB, T4L 2N3

All submissions will be public information

For more information, please contact **Jennifer Berry, Environmental Coordinator**, at 403-782-8959 or email jberry@lacombecounty.com.



MEET YOUR COUNCILLORS!

HAYNES HALL (39002 RR 24-3)
APRIL 17 | 7-9PM

Take this opportunity to meet with
Lacombe County Councillors and County Staff
about the issues and updates that matter to YOU!



BARB SHEPHERD
Reeve | Division 3



JOHN IRELAND
Dep. Reeve | Division 1

MEET YOUR COUNCILLORS!

LACOMBE & DISTRICT TRADE SHOW
(AT THE GARY MOE SPORTSLEX)
APRIL 19 | 2-8PM
APRIL 20 | 10AM - 4PM

Take this opportunity to meet with
Lacombe County Councillors and County Staff
about the issues and updates that matter to YOU!



BRENDA KNIGHT
Division 2 Councillor



DWAYNE WEST
Division 4 Councillor



KEN WEENINK
Division 5 Councillor

MEET YOUR COUNCILLORS!

RAINY CREEK SHOP
APRIL 23 | 7-9 PM
(RAINY CREEK ROAD, NEAR RGE RD 3-0)

Take this opportunity to meet with
Lacombe County Councillors and County Staff
about the issues and updates that matter to YOU!



ALLAN WILSON
Division 6 Councillor



DANA KREIL
Division 7 Councillor

Success Grows Here in Agriculture

(Continued from cover)

- **ECONOMIC DEVELOPMENT** – The agricultural industry represents many County residents and generates significant revenue for the overall community. Activities associated with agriculture result in employment for thousands of people in Alberta. The success of the agricultural industry in our community also benefits local businesses in various sectors. From equipment suppliers to food processors, many businesses rely on a thriving agricultural sector for their own success and growth.
- **HERITAGE** – Today, the rich heritage of Lacombe County stands as a testament to the enduring connection between the land and its people. The echoes of the past resonate as we walk through these lands, not just traversing physical space but also stepping into a narrative woven by generations before us, even before the arrival of settlers. The legacy of the Indigenous peoples who tended to these lands for millennia is a reminder of the deep respect and harmony they shared with the earth. Their agricultural practices were not just about sustenance but also about stewardship, understanding the delicate balance of nature and the cycles of growth and renewal.

WHAT IS THE CONNECTION BETWEEN AGRICULTURE AND THE COUNTY'S PLANNING POLICY?

The connection between agriculture and the County's planning policy is deeply rooted in the fundamental element of land. Agriculture relies on the utilization of land for farming practices, crop cultivation, and livestock rearing. In a similar vein, the County's planning policies are intricately linked to land use regulations and guidelines.

The County's Municipal Development Plan, Land Use Bylaw, area structure plans, and intermunicipal development plans, play a pivotal role in defining and directing the permissible uses of land. These policy documents provide a road map for sustainable development, zoning regulations, and the allocation of land for various purposes, including protecting lands for continued agricultural use.

This symbiotic relationship highlights the significance of incorporating agriculture into the County's comprehensive planning strategies to ensure our agricultural land is used responsibly, for the benefit of current and future generations.

HOW DOES THE COUNTY PROTECT AGRICULTURAL LANDS?

There are a variety of policy tools that work together to protect agricultural lands in Lacombe County, as follows:

- The County's Municipal Development Plan states that unless designated otherwise, all lands in the County are considered agricultural. In fact, 98.6% of land in the County is zoned Agricultural 'A' District in the County's Land Use Bylaw.
- The County's Land Use Bylaw allows uses in the Agricultural 'A' District that allows the rural com-



munity to grow, but it restricts uses that would negatively impact surrounding agricultural uses. For example, the Land Use Bylaw provides opportunities for a landowner to build a house, start a home based business, operate an agricultural support service business, and explore small-scale recreational opportunities.

- The County can only consider allowing the rezoning of land from agricultural use to large-scale residential, commercial, industrial, or recreational uses only if the lands are identified for such future uses in a County plan. As such, the vast majority of land in the County is protected for continued agricultural use.
- Even where a Plan identifies certain lands for a potential future use, there is no obligation on a landowner to develop their lands. In Lacombe County, the landowner is in full control of development on their land. If a landowner wishes to continue agricultural uses in an area identified for another potential future use, they may continue to do so for as long as they wish.
- The County has designed its subdivision policies to specifically aid and strengthen the local agricultural community. There are three types of subdivision the County can consider in the Agricultural 'A' District:
 - First Parcel Out – Allows a landowner to take out one 4-acre parcel out of an unsubdivided quarter section, subject to a dwelling being present for at least 5 years.
 - Fragmented Parcel – Allows a landowner to separate a quarter section into two or three parcels if parts of the quarter section are physically severed by a feature such as a river, railway, or highway.
 - Agricultural Parcel – Allows for established specialized and intensive agricultural operations larger than 10 acres in size to create a separate parcel from an unsubdivided quarter section.

The County's present-day subdivision policies do not result in more than three titles per quarter section.

This prevents subdivisions that fragment agricultural lands, minimizing the potential loss of agricultural land or conversion to other uses.

HOW DID THE COUNTY COME UP WITH THESE POLICIES?

In 2017, the County updated its Municipal Development Plan and Land Use Bylaw and conducted several rounds of public engagement with the local community. The public participation process was so thorough that Lacombe County was recognized for demonstrating excellence in our planning process by both the Minister of Municipal Affairs (2018 Minister's Award - Municipal Excellence for Innovation) and the Alberta Professional Planners Institute (2018 Award of Planning Merit for Education).

During the public engagement, the community indicated that they are proud of the County's strong rural character and wanted the County to use its planning policies to ensure agricultural lands are protected for future generations. As such, the community believed it is important to identify certain strategic areas for development while protecting the rest of the County for continued agricultural uses. Furthermore, the community felt strongly that subdivision opportunities in the Agricultural 'A' District be reserved to support the rural community, and the potential loss of agricultural land be minimized.

In response to the valuable feedback from the community, County Council has taken significant steps to uphold the County's rural character and protect agricultural lands. The Municipal Development Plan and Land Use Bylaw reflect a commitment to strategic development while prioritizing the preservation of agricultural areas. By reducing the fragmentation of extensive agricultural land, and supporting agricultural businesses, Council aims to support the rural community and sustain our agricultural heritage. These policies, shaped by community input, play a crucial role in achieving a collective vision for a sustainable and thriving future, where we can all contribute to ensure that Success Grows Here!

SAFETY FIRST

Fire Permit season begins March 1: Don't forget yours!

Lacombe County reminds people that permit requests are free and easy to submit.

Lacombe County is reminding all ratepayers of the upcoming fire permit season beginning March 1, 2024. In an effort to ensure community safety and environmental protection, the county enforces the requirement for fire permits for controlled burns. Unauthorized burning could lead to significant fines and charges.

Lacombe County reminds people that permit requests are free and easy to submit.

OBTAINING A FIRE PERMIT

Fire permits can be conveniently acquired at any time online via the Lacombe County website at www.lacombecounty.com, ensuring accessibility 24/7. Alternatively, permits are available in person at the Lacombe County Office during regular business hours (8:30 a.m. to 4:30 p.m.), or by contacting the Community Services Department at 403-782-8959 from 8:00 a.m. to 4:00 p.m.

Dion Burlock, Director of Community Services, emphasizes, "Fire permits are not only free and easy to obtain, but they also provide a crucial layer of safety for our residents and their neighbours. Each permit includes detailed requirements to guarantee that burns are conducted safely and responsibly."

PENALTIES FOR NON-COMPLIANCE

Lacombe County's Fire Protection Policy outlines strict consequences for burning without a permit. Offenders will face a mandatory \$300 flat rate charge for fire department responses not requiring suppression efforts, along with potential charges under the Forest and Prairie Protection Act.

SAFETY FIRST: CHECK WINTER BURN PILES

Given the unusually dry winter, the county urges residents to vigilantly monitor any winter burn piles. These can smoulder unnoticed and reignite, posing a significant fire risk in spring. "It's critical to ensure that all controlled burns are fully extinguished and to adhere to safe burning practices throughout the year," Burlock adds.

If you have done any burning this fall or winter, take the time to visit your burn site to make sure the fire is completely out. For further information, visit: <https://www.alberta.ca/safe-burning>.

FIRE RESPONSE CHARGES

Property owners will be held financially responsible for fires resulting from negligence or failure to comply with permit conditions, including:

- Fire truck: up to \$700 per hour
- Water truck: up to \$700 per hour
- Rapid response unit/mini pumper: up to \$700 per hour
- Rescue truck: up to \$700 per hour
- Command vehicle: up to \$205 per hour
- Additional equipment and personnel costs as per Lacombe County rates (These rates are current up to April 2024)



Lacombe County will be hosting a two-day voluntary farm vehicle safety check at our public works shops located in the east and west sides of the County. The purpose of this check is to increase both the safety and the awareness of vehicle safety in our agricultural industry.



Dates: April 3, 2024 (west) & April 4, 2024 (east)
Time: 9 a.m. to 3 p.m.
Locations: West Remote County Shop (Rainy Creek Road, near RR3-0)
East Remote County Shop (Hwy 12 & Hwy 821 near Tees)
RSVP: Reserve your spot by calling 403.782.8959. Deadline to book a spot is March 28. Drop ins are welcome, but priority will be given to those who booked an inspection spot.

(From front page) Lacombe County to host voluntary Farm Vehicle Safety checks

Note: Inspection results are indicated on Carrier Profiles of those operating under the authority of a Safety Fitness Certificate; please get in touch with CPO Services if you have any questions.

For those with questions about ELDs, load securement, or other transportation-related issues, our local Peace Officers will be on-site and eager to assist.

EVENT DETAILS:

- Dates & Locations:
- April 3: Rainy Creek Shop, located on Rainy Creek Road near RR 3-0, from 9:00 AM to 3:00 PM.
- April 4: Tees Shop, located at the intersection of Hwy 12 and Hwy 821, Tees, from 9:00 AM to 3:00 PM.

ADDITIONAL INFORMATION:

- Refreshments and lunch will be provided.
- We welcome you to drop in anytime between 9:00 AM and 3:00 PM. However, booking in advance is recommended to ensure priority; drop-ins will be accommodated as possible.
- For those bringing multiple vehicles, please stagger your arrivals by approximately 20 minutes to facilitate a smooth process.

For more information or to book your inspection time, please call 403-782-8959 or email tgessleman@lacombecounty.com. We look forward to your participation in making our roads safer for everyone.

SPRING SEEDING DRIVE SAFELY

Whether you work in acres or hours, patience pays off!



MIRROR CORNER



ALIX MIRROR WELLNESS
SUPPORTS SOCIETY

SERVICES AVAILABLE TO MIRROR

- Alix and Area Community Resource Centre
- Bashaw & Area Community Resource Centre



Wellness Services

Massage Therapy
Acupuncture
Holistic Practitioner
Mental Health Therapy
Nursing Foot Care

Partner Feature

Family Resource Network
Adult Learning
Bashaw Regional Wellness Initiative
Alix Dance Club
Well Mannered Mutts



Social Services

Food Bank
Information & Referral
Resource Navigation
Meals on Wheels
Form Support
Seasonal Programs
Volunteer Income Tax Assistance

Senior's Week
Volunteer Appreciation
Winter Wishes
Joy of Giving
Coats for Kids, Santa's Anonymous, Fill A Fridge
Mitten Tree
Angel Tree
Tools for School

Please call either office for details on further programs available to Mirror.



Bay 1 & 2, 5008 50 Ave,
Alix AB
403-396-3369



4909 50 Street,
Bashaw, AB
780-372-4074

All Ages Welcome

Connecting Clans
Community Events
FREE Weekly Veggies
Puzzle Exchange
Tech Support

Child, Youth & Family

Cub Crew
Moms & Tots
Rainbows
Family Wellness
After-School Programs
Safety Week
Summer Fun
Swimming Lessons
Youth Outings
Baby Clinic

Senior & Adult

Wise Owls
Senior Fun
Lifeline
Home Support
Cooking Connections
Senior Outings
Pickleball
Fitness Fun
Transportation
Healthy Families

2024 Mirror Dog Tags

A license is required for all dogs in Mirror. The fee is \$15.00 for an altered dog and \$25.00 for an unaltered dog. After February 28, 2023, the cost increases to \$30 for an altered dog and \$50 for an unaltered dog. For more information, please call (403) 782-6601 or visit www.lacombecounty.com/en/living-here/animal-control.aspx.

Lacombe County will issue a tag for each dog, which must be attached to a collar worn by the dog at all times. Lacombe County Enforcement Officers will do checks to ensure compliance.

If you would like to report a contravention of the Dog Control Bylaw, please call 403-506-9380, or email info@klassickennels.com. **For animal welfare issue please contact the Alberta SPCA at <http://www.albertaspc.ca.org/>

Jolly Seniors

Pancake breakfast every second Sunday from 9 a.m.-1 p.m.

Booking Mirror Community Hall

Call Lisa 403-788-3890 or cell 403-505-3894. Alternately you can contact Mike Carr, home 403-788-3778 or cell 403-357-8239 for hall information.

Friends of the Mirror Library Society/ Mirror Library

The Mirror Library would like to remind

patrons of the many items available for borrowing. We carry books for everyone, audiobooks, DVDs, games, and puzzles.

Hours: Wednesdays 2-5 p.m.
Thursdays 10 a.m. - 1 p.m.
2nd & 4th Saturdays
10 a.m. - 2 p.m.

Please like us at: facebook.com/booksinmirror for the most up to date information. The Library also has meeting spaces for rent and free Wi-Fi. Please contact us through the Facebook page or email booksinmirror@gmail.com.

Mirror Royal Canadian Legion Branch 189 - 5015 50th Avenue

Meat Draws Saturday at 4 p.m. General meetings second Sunday at 1 p.m. (unless otherwise posted).

Mirror and District Museum

Contact mmuseum@ccwireless.ca if you would like to volunteer and for hours of operation

CN Rail crossing delays

If you experience delays longer than 20 minutes at the Mirror rail yard crossing, call CN Rail at 1-800-465-9239. Follow the prompts and be ready to provide details shown on the crossing signal mast to CN personnel. Transport Canada may be reached at 1-888-463-0521.

MAY LONG WEEKEND

YOU ARE INVITED

SLOW PITCH TOURNAMENT

BALL TOURNAMENT

- DATES:** May 17 to 20, 2024
- COST:** \$250 per Team
A team is 6 men and 4 women
- LOCATION:** Mirror, Alberta
at 48 Avenue & 49 Street
- TO REGISTER / FOR MORE INFO:**
Call Dianne at 403-391-4083

- \$7 PANCAKE BREAKFAST**
Saturday 7:30am to 10:30am
at Mirror Community Hall
5102 - 50 Avenue
- CABARET**
May 18 from 7pm to Midnight
at Mirror Community Hall
5102 - 50 Avenue
- FREE CAMPING**
First Come, First Served
Campground is located
south of the ball fields.
- PLUS MORE!**
It's Mirror May Day with lots
of activities on Saturday for
the whole family!

CHECK OUT OUR FACEBOOK PAGE:
www.facebook.com/groups/mabcss

MIRROR & DISTRICT MUSEUM

WE ARE PROUD TO WELCOME OUR NEW 2024 BOARD MEMBERS!

MIRROR & COMMUNITY MARKET

SUNDAY APRIL 7TH
11AM-3PM
5102 50 AVE
Mirror Community Hall

RENT OUR KITCHEN FOR A "POP UP" LUNCH!

\$10 TABLE RENTAL

LOOKING FOR BUSKERS!

MESSAGE OUR PAGE
"MIRROR AND COMMUNITY MARKET FUNDRAISER"
OR EMAIL mander088@hotmail.com
TO BOOK YOUR SPOT

5102 50 Ave
@Mirror Community Hall

Mirror & Community Market Fundraiser

Our market is created to help fundraise for a new stair lift at the Mirror Community Hall. All of our vendor table fees go towards the lift fund. Come out and support your local home businesses & meet some awesome people!
We all benefit when the community comes together!

FIRST SUNDAY OF EVERY MONTH
TWO MARKETS IN MAY!
11AM-3PM

- April 7th (full) - live music by Mark Isleifson!
- May 5th
- May 19th
- June 2nd
- July 7th

\$10 Table Fee

Rent our kitchen!
Host your own concession style lunch
Availability in May/June/July

Looking for musicians for our future dates!

Message our Facebook page
"Mirror and Community Market Fundraiser"
or email mander088@hotmail.com
for more information

5

ENVIRONMENT

Happy World Water Day March 22, 2024

Water Conservation Tips for a Sustainable Lifestyle

Quick Showers

Opt for shorter showers to save water—aim for efficiency without sacrificing cleanliness.



Leak Patrol

Fix any leaks promptly; a dripping faucet can waste litres of water over time.



Collect Rainwater

Install rain barrels to collect rainwater for watering plants or washing purposes.



Full Loads Only

Run washing machines and dishwashers with full loads to maximize water efficiency.



Turn Off the Tap

Turn off the tap while brushing teeth etc to avoid unnecessary water waste.



Xeriscape Landscaping

Choose drought-resistant and/or native plants to reduce outdoor water needs.



Greywater Wisdom

Reuse greywater for non-potable purposes like flushing toilets or watering plants.



Smart Irrigation

Use smart irrigation systems that adjust watering schedules based on weather conditions to avoid overwatering.



“Someday, we might look back with nostalgia at the days when profligate homeowners wastefully sprayed their lawns with liquid gold to make grass grow, just so they could burn black gold to cut it down on weekends.” – Michael Webber



The Parkland Airshed Management Zone (PAMZ) is pleased to announce that it will be accepting applications for the 2024 Dr. Martha Kostuch Scholarship beginning on December 15, 2023.

This scholarship celebrates the legacy of environmental advocate Dr. Martha Kostuch. During her 30-year career, Dr. Kostuch made a significant impact on how environmental management policy was developed in Alberta. Her work influenced a shift towards shared governance, recognizing that there is a shared responsibility for all sectors to act as good stewards of the environment.

The Dr. Martha Kostuch Environmental Education Fund was permanently established

APPLY TODAY | PAMZ Dr. Martha Kostuch Scholarship

to honour her memory and to help students from the PAMZ region pursue an education that will benefit the environment. This award is presented annually to a deserving, graduating high school student in recognition of their outstanding service and leadership, as well as their potential for future achievement in environmental stewardship.

The deadline for applications is midnight, May 31, 2024, and the successful recipient will be notified by June 30, 2024.

For more information about the Martha Kostuch Scholarship, please visit <https://pamz.org/martha-kostuch-scholarship/> or contact Sarah Trottier at comm@pamz.org.

IMPORTANT NOTICE

ICE FISHING HUT REMOVAL REMINDER

All ice huts **MUST** be removed from:
Sylvan Lake | Gull Lake | Buffalo Lake

According to Sport Fishing Regulations, anglers are legally required to remove ice huts by March 31.

Help protect our lakes and local environment!

JOIN US FOR AN EVENING WITH

THE MEDICINE RIVER WATERSHED SOCIETY

LIGHT SUPPER PROVIDED!

April 10
6-9 PM

Benalto
Community Hall

- ▶ The Medicine River Watershed Society will present the results of their **2023 River Water Quality Sampling Program**.
- ▶ Learn how ALUS & RALP are helping farmers & ranchers adopt practices that enhance water quality in the Medicine River watershed & how you can apply.

REGISTER
HERE!



OPERATIONS

Road Ban Season around the corner

Road bans are a mechanism to minimize road damage and prevent costly repairs. Lacombe County does not seasonally ban any roads but may place temporary bans if a specific location requires a ban for road damage reasons.

Gravel roads are prone to damage in the spring, summer, and fall, but repairs are much less expensive. Lacombe County seldom places road bans on gravel roads since it would restrict industry. Still, the damage can be extensive occasionally, so that road bans could be considered under extreme situations.

Lacombe County relies on ratepayers and industry to use their best judgment regarding road use. Reporting

any signs of road damage to Lacombe County's Operations Department can be beneficial, so that we can facilitate repairs as quickly as possible.

Grain Movement

County Council recognized the necessary grain movement, and we strive to work with the agriculture community to facilitate grain movement through the road ban season. Grain hauling on banned roads will be considered, provided a special permit has been applied for and authorized by Lacombe County. Other industries can also be given special permission under certain circumstances.

1. Depending on the weather, special permits will be considered for

loads being hauled under frost conditions and limited in time to be completed by 10:00 AM or 12:00 PM.

2. Special permits to haul up to 90% may be considered for roads banned at 75%.
3. Special permits to haul up to 100% may be considered for roads that are banned at 90%
4. Special permits may be considered for 100% loads on banned roads but only to allow access to the nearest non-banned road.

Road maintenance and rebuilding are costly but can be minimized if road damage is recognized before major repairs are required. The burden of these costs falls on County ratepayers through taxation.



Lacombe County strives to work with industry and ratepayers to facilitate the flow of materials while keeping road maintenance costs down.

We endeavour to minimize the inconvenience to all industries with your assistance.

For a complete listing of affected roads, go to www.lacombecounty.com or contact Lacombe County at 403.782.8379.



All commercial or industrial hauling within Lacombe County requires a road use agreement.

Please get in touch with **ROADATA SERVICES** at **1.888.830.7623** for permits.

Any other inquiries can be directed to Lacombe County Enforcement at 403.782.8959

Don't get left in the dust!

Lacombe County is currently taking requests for our **2024 Dust Control Program**. If you are interested in having Calcium Chloride in front of your residence or place of business, please contact Cassandra at the County shop at 403.782.3567.



Ratepayer's cost-shared rate for 2024 is \$3.64 per lineal metre for two applications and \$1.82 per lineal metre for one application, to a maximum of 200 metres. **If you require more than 200 metres, the additional will NOT be cost shared.**

Please submit your application and make payment for dust control before the annual deadline of May 15, 2024.

****Note:** The application of dust abatement may cause some possible effects, such as loss of vegetation. Lacombe County is not responsible for any claims or damages resulting from the application process.**

If you are interested in finding out more about the County's Dust Control Program, please call Cassandra at 403.782.3567, Ivy at 403.782.8379 or email operations@lacombecounty.com



AGRICULTURE

How ALUS is Proving that Farmers and Ranchers Produce Ecosystem Services

By Jenna Dell, ALUS Lacombe Field Assistant

ALUS Farmers and Ranchers in Lacombe County and across Canada, have witnessed firsthand the positive effects their management changes can have on the landscape. We recognize the increasing need to prove to the world what we all know: that farmers and ranchers can and do produce increased ecosystem services.

Through ALUS, this measuring and proving is happening at a national level and at the local level.

Nationally, ALUS is leading these ecosystem services quantification methods:

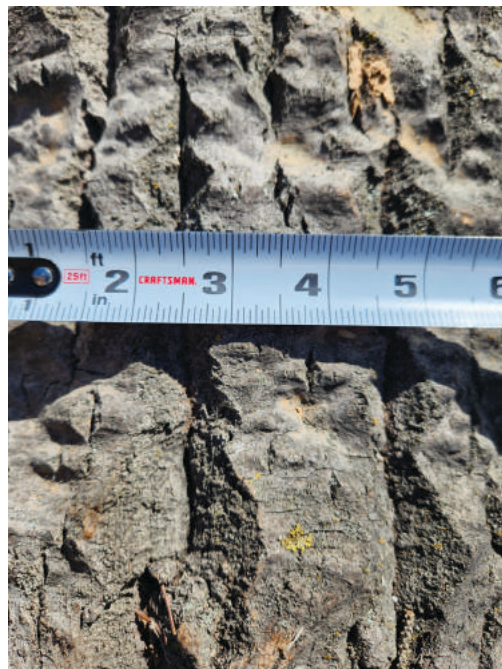
- 1. General Quantification:** This method involves techniques such as air photo or satellite imagery analysis, ground-truthing, and visual inspection of ALUS sites to measure acreage and assess project conditions. It ensures accurate data collection and a detailed understanding of the landscape before and after ALUS farmers and ranchers do their projects on the ground.
- 2. Carbon Quantification:** Recognizing the current interest in carbon sequestration and carbon credits, ALUS is measuring these on ALUS farms and ranches. At the moment, tree planting and grassland projects are being measured for above-ground and soil organic carbon respectively, using a variety of methods. This includes tree surveys, lab analysis of soil cores, and an innovative sensor technology to generate carbon maps of ALUS project areas. This provides ALUS producers with numerical values of carbon stored on their land.
- 3. Water Quality and Retention:** A water modelling tool has been created in the Modeste Watershed to evaluate water quality and retention on ALUS sites there. Future plans include creating a calculator to determine the economic value of the natural infrastructure that healthy riparian areas supported by ALUS can provide. These benefits can include mitigating floods and droughts, extending the life of existing infrastructure like culverts or bridges, and improved water quality through retention and filtration.
- 4. Biodiversity Monitoring:** ALUS is

working with scientists who do surveys and counts of insects, bats, birds, aquatic invertebrates, plants and soil microbes at ALUS projects, to establish both baseline and post-project biodiversity numbers. So far, these monitoring efforts show an increase in species richness and abundance at ALUS sites.

Locally, ALUS Lacombe is participating in the national initiatives above. Over-and-above that, ALUS Lacombe does Riparian Health Assessments when a farmer first does an ALUS project, and then comes back 5 years later to measure riparian improvements. Starting in 2024, we're also going to expand our measurements to include water infiltration, water turbidity, soil compaction, and bird surveys.

All of these quantification methods not only yield valuable data, but they also enhance our understanding of ALUS producers' contributions to maintaining and conserving our natural environment as stewards of the land. When this data is communicated to the public, to funders, and other stakeholders, we showcase how agriculture benefits the environment, and how farmers and ranchers act locally to help address big picture issues that matter to us all.

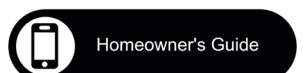
To learn more about ALUS, feel free to call Ken Lewis, ALUS Coordinator at 403-505-9038 or myself, Jenna Dell, ALUS Field Assistant, 403-392-4616, or check ALUS.ca to explore some of the research from our quantification efforts.



Dealing with spring runoff

As a homeowner, it's important to consider your home and lot drainage before spring runoff occurs. A late spring thaw can happen quickly catching homeowners off guard, flooding yards and even basements. Here are 7 tips to help you plan for spring runoff:

- 1. Understand your property's grading:** The grading of your property is the slope or angle of the ground surface. Proper grading can help direct water away from your property and prevent it from pooling in areas that can cause damage. A good rule of thumb is to ensure that the ground slopes away from your house at a minimum of 1 inch per foot for at least the first 10 feet.
- 2. Identify areas where water accumulates:** Walk around your property and identify areas where water may accumulate, such as low spots or areas with poor drainage. These areas are prone to ice buildup and can be a hazard during the winter. Consider installing drainage systems, such as French drains, swales, or catch basins, to direct the water away from your property.
- 3. Clear your gutters and downspouts:** Gutters and downspouts play a crucial role in directing water away from your property. Inspect gutters and downspouts at least twice a year. Make sure they are clear of any debris, such as leaves and sticks to ensure proper water flow. Installing gutter guards or screens can help prevent debris buildup from happening. Consider installing heating cables to prevent ice buildup in your gutters and downspouts during spring thaw & freeze cycles.
- 4. Consider permeable surfaces:** Permeable surfaces, such as gravel or permeable pavers, allow water to soak into the ground instead of running off into your yard. Consider using permeable surfaces in areas where water tends to accumulate, such as driveways or patios.
- 5. Support local contractors:** If you're unsure about the drainage on your property, consider hiring a professional to assess your property and make recommendations for improvement. A professional can also help you identify potential hazards and provide solutions to prevent damage to your property.
- 6. Never pump weeping tile water in sanitary sewer systems:** Pumping weeping tile water into sanitary sewer systems is illegal and can cause significant problems to both environment and public infrastructure. It can overload sewer systems, which can damage public infrastructure and harm the environment. Sanitary sewer systems are designed to handle only the wastewater from homes, such as toilets, sinks, and showers. Additionally, treating weeping tile water at wastewater treatment plants is expensive and unnecessary, as the water is typically clean and does not require treatment. By pumping weeping tile water into the sanitary sewer system, homeowners are also causing the unnecessary use of resources and increasing the cost of wastewater treatment for everyone.
- 7. Take advantage of free guides to lot grading and drainage:** There are many "how to" sites on social media that can offer free solutions to grading issues. The City of Edmonton offers a free guide to Lot grading and drainage, check it out online at: https://www.edmonton.ca/sites/default/files/public-files/assets/PDF/Homeowners_Guide.pdf



AGRICULTURE

ATTENTION

Grain Bag and Twine Recylers in Lacombe County

Are you recycling your agricultural plastics and twine to help the environment?

IT ONLY WORKS IF YOU RECYCLE RIGHT!!

We have found many recycling issues, which have led to twine bags thrown in the garbage (rather than appropriately recycled). Please ensure you are following the proper steps (below).



NO feed bags ~ NO grain totes ~ NO silage plastic ~ NO bale wrap

ABOUT

Grain Bag and Twine Recycling in Lacombe County

Grain Bag Recycling



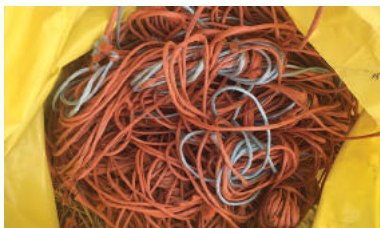
Details:

This service is offered free of charge to agriculture producers operating within Lacombe County. The grain bags will be rolled and collected on farm site for eventual delivery to a plastic recycling center in Alberta.

Requirements:

- Agriculture producers who request grain bag recycling services must provide one individual on site, capable of assisting the rolling and collection operation.
- Grain bags **MUST BE FREE** of grain, mud, dirt debris, and vermin.
- To ensure used grain bags are eligible for recycling, grain bag collection services should be scheduled within one week of grain extraction.
- Grain bag collection services are offered free of charge.

Twine Recycling



Details:

Producers can pick up Clean Farms Twine Recycling Bags at any Lacombe Regional Waste Services Commission Transfer Site during regular business hours. Twine will only be accepted if it is placed in the Clean Farms Twine Recycling Bag, and then brought to the collection site.

Requirements:

- Shake** – Remove as much debris, snow or ice as possible. Excessively dirty twine may be rejected, or subject to a landfill tipping fee or additional charges at drop off.
- Bag** – Place loose twine in a Clean Farms Twine Recycling Bag and tie bags to close. Please do not knot the twine. Clean Farms Twine Recycling bags are available free of charge at any Lacombe Regional Waste Services Commission Transfer Sites.
- Return** – Return to a Lacombe Regional Waste Services Commission Transfer Site during regular business hours.

ALUS & RALP

Q & A

What is ALUS?
What is RALP?
What are they funding?
How do I apply?

All these questions and more will be answered in a series of community meetings.



MARCH 19 LACOMBE MEMORIAL CENTRE
1 - 3 PM

MARCH 21 VILLAGE OF CLIVE LIBRARY
7 - 9 PM

APRIL 10 BENALTO COMMUNITY HALL*
6 - 9 PM *Includes presentation from the Medicine River Watershed Society

APRIL 16 NEXSOURCE CENTRE SYLVAN LAKE
1 - 3 PM

APRIL 17 ABBEY CENTRE BLACKFALDS
7 - 9 PM

REGISTER HERE!



or call
Red Deer County
Agriculture Services
403.342.8654

Central Alberta Foodgrains Project looking for land for 2024 growing season

After a very successful 2023 year, the local growing project requires a parcel of land for this year. Last year, over \$195,000 was raised and sent to the Canadian Foodgrains Bank in Winnipeg, to help with feeding hungry people internationally.

Now in its 29th year, the Central Alberta Foodgrains Project has utilized land in all parts of Lacombe County. Sometimes the land is donated for use, and at other times the landowner will ask for cash rent. "For many years, we were able to obtain a quarter section of land but recently it has been smaller parcels such as 58 acres in 2022 and 85 acres in 2023. Regardless, we are appreciative of any land we are able to use," explains committee member, Doug Maas.

Growing projects such as this one based out of Lacombe, are a major fundraising partner for the Canadian Foodgrains Bank, a registered Canadian charity. In 2023, the Foodgrains Bank celebrated its 40th

anniversary, and in that time has helped 32 million people in over 80 countries. As well as providing emergency food aid, it also supports developing long term solutions to hunger.

Besides its own crop sale, the Central Alberta Foodgrains Project receives cash donations and also donations of crop from local farmers. Producers can haul their commodity to local elevators such as Richardson, Lacombe East and P & H, Joffre and designate the crop proceeds to the growing project.

"There is so much need in the world, and changing weather and internal conflict are adding to that need. If you have land available for us, or wish to assist in any other manner, it would be very much appreciated," says Maas.

To contact Doug Maas, please call 403 318-5733.



LACOMBE
COUNTY

To book grain bag collection or further questions regarding agriculture plastics or twine recycling, please call 403- 782-8959.

Managing gophers populations without strychnine

A multifaceted strategy is essential to manage gopher populations effectively without relying on strychnine. With the phase-out of strychnine for gopher control, as directed by Health Canada's Pest Management Regulatory Agency (PMRA), alternatives must be considered. Strychnine's production ceased in 2021, sales ended in 2022, and its use concluded in March 2023, marking a significant shift in pest control strategies for local producers.

Both Rozol RTU and Burrow Oat Bait rodenticides can be effective in controlling gophers when used early in the season (March-April) before gophers reproduce and when other food sources are scarce. For sensitive areas around yards, gas cartridges (Giant Destroyers) and traps offer non-chemical control methods and are widely available at local hardware stores.

Additionally, land management plays a crucial role in controlling gopher populations. Prevention of overgrazing creates less inviting habitats for gophers. Encouraging natural predators by maintaining habitats—for instance, trees for hawks or burrows for badgers—can also contribute to gopher population control, complementing traditional methods like shooting, trapping, and rodenticide use.

With Richardson Ground Squirrels, locally known as gophers, playing a significant ecological role yet posing potential threats to agriculture and ecosystems, a balanced approach to their control is critical. An integrated pest management approach not only addresses immediate pest control needs but also considers long-term ecological balance and regulatory compliance. For more detailed guidance on the biology and control of these pests, resources such as Alberta Agriculture & Irrigation's informational factsheet offer valuable insights.

If you have any questions, please contact the Community Services department at 403-782-8959.



RDAR accepting online applications for the On-Farm Climate Action Fund

Results Driven Agriculture Research (RDAR) announced that it will deliver the On-Farm Climate Action Fund (OFCAF) through to March 31, 2025.

OFCAF supports adopting beneficial management practices (BMPs) that reduce greenhouse gas emissions while fostering economic and environmental sustainability. Agriculture and Agri-Food Canada (AAFC) funds the program as part of the Government of Canada's Agricultural Climate Solutions – On-Farm Climate Action Fund.

2024 OFCAF Applications:

The program cap for any single farm operation will remain at \$75,000.

For 2024, AAFC has introduced several program adjustments, such as the need for additional registration information and a cap on funding for specific BMPs. To prepare for the program's opening, RDAR is making the AAFC-required updates to ARGO, RDAR's grant management and application intake system. **OFCAF program funding is limited. Once open, the program will continue to accept applications until funding is fully committed.**

RDAR will communicate regularly to keep applicants informed about the status of funding. By staying connected to OFCAF news and announcements through subscription to the RDAR newsletter, visiting the RDAR funding opportunities website and following RDAR online, you will be among the first to learn about new program developments and opportunities to apply for funding.

About the OFCAF Program

OFCAF provides financial support to help producers implement on-farm BMPs in the areas of:

- Nitrogen management
- Cover cropping
- Rotational grazing practices

Implementing these practices will drive environmental benefits and tackle climate change by reducing greenhouse gas (GHG) emissions and enhancing carbon sequestration.

Watch the 2024 OFCAF webinar (https://www.youtube.com/watch?v=tLFbbyN2_mc) and visit www.rdar.ca for information about the program and the application process.



The benefits of forages in your rotation

Tips, trends & news from Central AB Co-op Agro Lacombe

Including a forage crop, especially one that contains legumes, in your crop rotation has been shown to have a variety of benefits to the soil and your cropping system. They can increase soil fertility and organic matter, increase short-term phosphorus availability, and produce higher yields in following crops. Forage crops can additionally remediate problems due to excess water or saline soils, and break pest cycles, aiding in reduced weeds and diseases. Since forage stands typically persist for a few years, they can offer a great solution to breaking disease cycles. For example, problem diseases such as Clubroot in canola or Aphanomyces in peas can be very detrimental, and it takes a number of years before growing those crops again is safe. Forage roots have also been shown to improve water infiltration, drainage and water use for the next crops (for at least 2 years), especially on clay soil types. This can also allow you to get onto your field faster in the spring.

Forages can be an effective way to reduce pests in your field, including problem populations like herbicide resistant weeds. Many studies have shown a forage stand's effectiveness in reducing wild oat,

green foxtail, Canada thistle, and kochia populations, among many others. One of the main issues these weeds pose is their persistence in the weed seed bank. By growing forages, you can reduce the number of seeds entering the seed bank, as the crop is harvested before those weeds are able to reach maturity. There is also a lot more competition against these weeds, as the forages are given the best chance to survive and out compete them, and they are usually seeded denser than a row-crop would be. Growing forages is usually a longer-term commitment, in comparison to growing canola or wheat for example, so some more planning is required in order to give it the best start possible.

There are often opportunities to work with forage companies as a forage seed producer. In doing this, you get the benefits of producing forages for your soil and crop rotation, as well as the chance to get into a different market. Pricing for forage crops is typically quite competitive to row-crops, and depending on the year, they may have certain advantages. While this may be a good fit for some farming operations, it does require a lot more investment in time and you need to have very clean fields, so it may not be a good option for everyone.

When establishing a forage stand, there are a number

of tips that can improve germination, vigor and overall success of the crop.

Tips for a Good Forage Establishment:

- Create a firm, smooth seedbed
- Control weed populations the year before seeding forages – be aware of residual herbicide carry-over
- Have a good pre-seed burn off to control any new annual weeds
- Spring seeding is ideal – less weed competition and winterkill is reduced. The spring moisture is also beneficial
- Seed shallow – no more than ½ inch with good packing, up to ¾ inch on lighter soils
- Best time to fertilize is at seeding
- If using a cover crop, seed at 1/3 – ½ of normal rates, using a non-competitive crop like oats and harvest it early

Check with your local agronomist to see if forages would be a good fit for your farming operation, and how to implement this cropping system so that you have the greatest success possible!

LACOMBE COUNTY IS HOSTING A

FARMER'S PESTICIDE CERTIFICATION COURSE

COURSE DETAILS

Farmers who wish to use restricted pesticide, such as Phostoxin, are required to have a Farmer's Pesticide Certification. The Stored Grain Endorsement is required to fumigate with aluminum phosphide & the Exterior Rodent Control is required to use restricted rodenticides.

When registering, provide name, phone number and your current pesticide certificate number, if applicable. You may pay by cash or cheque at the door.

Lunch and refreshments provided.
MAX 20 ATTENDEES!! Registration required (contact below)

\$150/person + GST for the Farmer's Pesticide Course

\$75/person + GST per Endorsement module (1/2 day each)

\$275/person + GST for ALL THREE COURSES

	APRIL 11, 2024 9:00 AM - 4:00 PM Farmers Pesticide Course	APRIL 12, 2024 9:00 AM - 12:00 PM Stored Grain Endorsement	APRIL 12, 2024 1:00 PM - 4:00 PM Exterior Rodent Control
---	--	---	---

 **LACOMBE COUNTY ADMIN BUILDING**

 **403-782-8959**
jmakus@lacombecounty.com

LACOMBE COUNTY

REQUEST BY MAY 15: Roadside Haying Program

Lacombe County recognizes the value of legumes and grass growing in municipal road allowances during times of drought. As such, Lacombe County will work cooperatively with agricultural producers who wish to hay Lacombe County road allowances.

Important Dates:

- **MAY 15:** Residents must submit written requests to Lacombe County in order to hay the road allowance adjacent to their lands.
- **JULY 15:** Once the request is approved, the resident has until July 15 to cut and bail the road allowance.
- **JULY 16 – end of season:** After July 15, uncut areas of the road allowance will be mowed by Lacombe County.

PLEASE NOTE: Roadside Haying Agreements must be renewed annually.

Please contact Lacombe County Community Services at 403-782-8959 for more information.



LACOMBE COUNTY

WEBINAR REWIND

ABOUT TOSO:
Toso Bozic is a tree expert with experience, knowledge and passion in trees, forestry and agroforestry. With 25 years of experience, he is a leading consultancy service provider in every aspect of trees and forestry. As a result, we learn about growing, caring for, maintaining, pest protection, environmental, social and economic values of trees.

SHELTERBELT WORKSHOP

Join speaker Toso Bozic of Yard Whispers and learn how you can invest in the trees on your property. Agroforestry systems will increase agriculture yield and improve soil and water ecosystems.

Learn more at: <https://yardwhispers.ca/about-tree-expert/>.

SCAN ME

Scan the QR Code to watch this webinar on the Lacombe County YouTube channel, or go to https://www.youtube.com/watch?v=Ei1gTcqD_g



Wild boar are an **invasive species** that threaten our **environment and economy**.



SQUEAL ON PIGS!

Learn more or report signs and sightings to:

- EDDMapS
- wildboar@gov.ab.ca
- 310-FARM
- your local municipality

SUBDIVISION & DEVELOPMENT ACTIVITY

Do you have questions about subdivision or development activity?

Contact Us:

Lacombe County Planning Services
(403) 782-8389
planning@lacombecounty.com

Dale Freitag
Director of Planning Services

Cajun Paradis
Senior Planner

Natasha Wright
Planner / Development Officer

Nicklas Baran
Planner / Development Officer

Kerrie Taylor
Economic Development Officer

Allison Noonan
Planning Services Administrative Assistant

Daniella Gonzalez
Planning Services Receptionist

February 1, 2024 to February 29, 2024

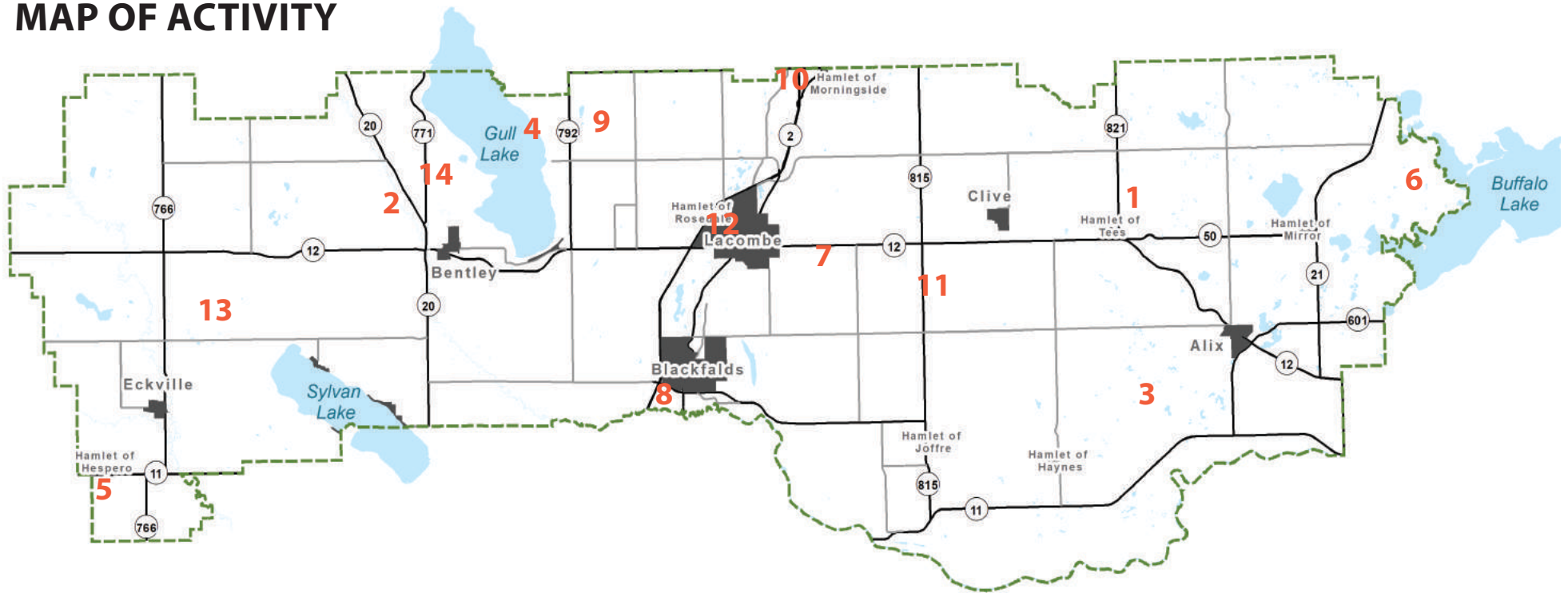
Development Applications Received

No.	File No.	Applicant	Legal Description	Proposed Development	Decision <i>(otherwise pending)</i>
1	07/24	Jim Gray	Plan 2398EU (SE-6-41-23-W4M)	Serenity Ranch Detox Centre <i>(Renewal, no changes)</i>	Approved
2	08/24	Eldon Bornn	Lot 1 Block 1 Plan 912 1547 (NW 33-40-01-W5M)	EB Automotive Ltd. <i>(Renewal, no changes)</i>	Approved
3	09/24	Greg & Vonda Martens	SW 17-39-23-W4M	Xtreme Raceways <i>(Renewal)</i>	
4	10/24	Ivan Reginato	Unit 148 Condo Plan 232 0356 (DeGraff's RV Resort, Gull Lake)	Modular Home, Shed and Gazebo	Approved
5	11/24	Richard & Denniece Crout	Lot 1 Plan 892 0171 (Pt. NE 36-38-04-W5M)	Setback Relaxation <i>(Existing Shop)</i>	Approved
6	12/24	Rollin Sutley	Lot 1 Block 1 Plan 962 2916 (NW 5-41-21-W4M)	Roll-Mar Trucking <i>(Renewal, no changes)</i>	Approved
7	13/24	Richardson International Limited	Lot 17 Block 1 Plan 142 3960 (E 23-40-26-W4M)	Accessory Building	Approved
8	14/24	Central City Asphalt Ltd.	Pt. NW/SW 22-39-27-W4M	Sand & Gravel Pit <i>(Renewal, Expansion)</i>	Approved
9	15/24	Jack & Mary Jane Mulder	Pt. SE 24-41-28-W4M	Riding and Boarding Facility <i>(Horse Connect)</i>	
10	16/24	Harry & Maryanne Folkerts	Pt. NE 34-41-26-W4M	Dwelling, Temporary Family Care	
11	17/24	Jonathan & Mika Wierenga	Lot 2 Block 1 Plan 222 2124 (Pt. NW 16-40-25-W4M)	Dwelling, First <i>(Replacement w/Covered Deck & Attached Garage)</i>	Approved
12	18/24	Matthew & Daisy Fraser	Lot 3 Block 1 Plan 151Z (Rosedale Valley)	Setback Relaxation & Addition to Residence	Approved

Subdivision Applications Received

No.	File No.	Applicant	Legal Description	Proposed Subdivision	Decision <i>(otherwise pending)</i>
13	S-006-24	Glen Brooker & Brett Brooker	SW 12-40-3-W5M	1st Parcel Out	
14	S-007-24	Victor & Karen Park	NW 10-41-01-W5M	1st Parcel Out	Approved

MAP OF ACTIVITY



Lacombe County is holding a PUBLIC HEARING

to update the Village of Alix / Lacombe County Intermunicipal Development Plan



BYLAW NO. 1409/24

Lacombe County and the Village of Alix are updating our shared Intermunicipal Development Plan, which plans for collaborative growth around Alix. In January 2024, the County and Village hosted a public meeting and survey to gather feedback on the proposed changes. The draft Plan has been refined based on the community feedback.

The County and Village Councils will be holding their own Public Hearings to seek input on the draft Plan before it is adopted. To review the draft Plan or survey responses, please visit the County website (link below).

This ad contains information on the County's Public Hearing. For information on the Village's Public Hearing, please visit the Village website at www.villageofalix.ca

WHAT IS A PUBLIC HEARING?

A Public Hearing presents the proposed bylaw, and gives members of the public an opportunity to speak to Council about it and provide input before adoption. Your input is valued and encouraged. Anyone wishing to comment on the proposed bylaw changes will have an opportunity to do so at the Public Hearing.

CONTEXT MAP



WHEN IS THE PUBLIC HEARING?

April 11, 2024

9:00 AM

HOW DO I PARTICIPATE?

Participate in the public hearing to voice your opinion. There are 3 ways you can provide input!

- 1 Attend and speak in person**
Lacombe County Office, Council Chambers
Located 2½ miles west of Highway 2 at the intersection of Spruceville Road and Highway 12
- 2 Attend and speak virtually**
Join by Zoom or by Phone
Instructions for accessing the meeting by phone or computer/laptop can be found on the County's website at www.lacombecounty.com/AlixIDP
- 3 Provide written comments**
If you are unable to attend the Public Hearing but want to provide input, please send your comments to Planning Services prior to April 11, 2024. Your comments can be sent by:
EMAIL planning@lacombecounty.com
FAX 403-782-3820, or
MAIL RR 3, Lacombe AB, T4L 2N3

All submissions will be public information.

or learn more at

www.lacombecounty.com/AlixIDP



PUBLIC MEETING

Proposed Annexation of Land by
the Town of Bentley
from Lacombe County



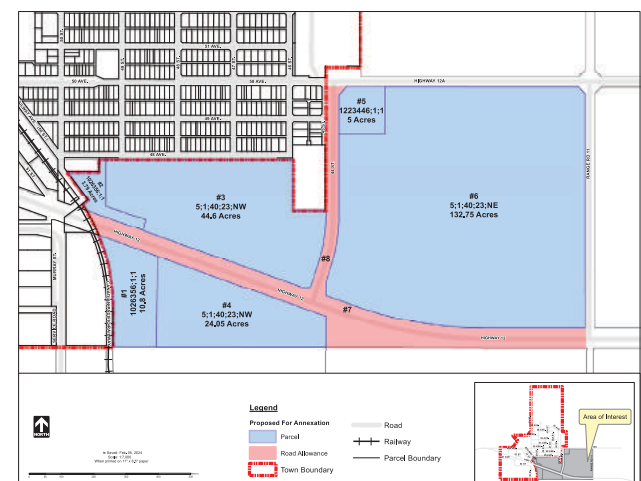
Thursday, April 18, 2024 @ 6-8 PM

Blindman Valley Agricultural Centre, 5202 53 Street Close, Bentley
(located behind the Bentley Arena off of 50th Street)

The proposed annexation area incorporates lands in the north half of Section 23, Township 40, Range 1, West of the 5th Meridian, located to the south and east of Bentley (shown as the shaded area on the map below). The proposed annexation area was the subject of the Southeast Bentley Area Structure Plan that was approved by Lacombe County Council in November 2023.

The purpose of the meeting is to present information about the annexation proposal and the process undertaken to date and to provide the public with an opportunity to comment on the proposed annexation. A brief presentation will be provided at the start of the meeting followed by a question / answer and discussion session.

For more information, please contact Albert Frootman, Project Lead, Parkland Community Planning Services at (403) 343-3394 or albert.frootman@pcps.ab.ca, or Marc Fortais, CAO, Town of Bentley at (403) 748-4044 or mfortais@townofbentley.ca.





WE'RE HIRING!

Seasonal Jobs!

Fencing Labourers
Mower Operators
Equipment Operators
River Weed Inspector

Full Details
www.lacombecounty.com/careers

Apply to hr@lacombecounty.com



REMINDER: Policy updates mean invoices for fire department responses

Springtime means the start of a busier season is approaching, with increased traffic on roads, agricultural burning, and heightened activity on local farms as the seeding season starts. Lacombe County reminds you to review your insurance coverage and ensure your policies cover potential emergencies is crucial.

Under our updated Fire Protection and Emergency Response policy, any resident or business utilizing emergency services, whether due to road incidents or on-property emergencies, will receive an invoice for these services. This policy adjustment, which changed in January 2021, aligns with best practices and effectively supports our fire departments and community.

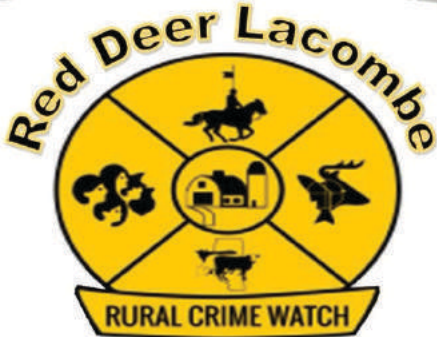
Specifically, the policy means Lacombe County residents and businesses will be billed for structure fires, while vehicle

owners will be invoiced for motor vehicle accidents occurring within the county. It's essential to know that these charges are typically covered by insurance if you have the right coverage.

This approach aims to directly involve property and vehicle owners in the funding of our volunteer firefighters and fire department operations, eliminating the need to rely solely on taxpayer dollars. Many municipalities have adopted similar practices, recognizing the benefits of such a model.

We encourage you to contact your insurance provider to confirm coverage for these potential invoices. If you have questions or need further clarification, please don't hesitate to reach out to Lacombe County at 403-782-8959.

ANNUAL GENERAL MEETING



March 23 2024 @ 10:00 AM
HAYNES HALL, HAYNES ALBERTA
39002 Range Rd 243
Special Speaker
TRISH MCALISTER

From
CENTRAL ALBERTA DRUG TREATMENT COURT SERVICES
John Howard Society
Lunch Served after: Please RVSP by MARCH 19
<https://www.eventbrite.com/e/red-deer-lacombe-rural-crime-watch-agm-tickets-841847838547?aff=oddtcreator>
["rdruralcrimewatch@gmail.com"](mailto:rdruralcrimewatch@gmail.com)

WHAT YOU CAN'T DO ON RESERVE LAND SOME SIMPLE RULES

We want everyone to enjoy our County reserve lands while keeping them beautiful and safe. By adhering to these rules, we can help preserve the natural beauty of our County lands and ensure that everyone can enjoy them responsibly. Here are some easy rules to remember:

1. PROTECT THE PLANTS

Do not cut, mow or remove plants, trees, or any other vegetation.



2. NO BUILDING ALLOWED

You're not allowed to construct or place any structures.



3. STICK TO THE DESIGNATED PATHS

Keep OHVs on designated trails.



4. LEAVE NATURE ALONE

Don't dig or take away natural features from the land.



5. NO SIGNS OR ADS

Do not attach signs, advertisements, or anything else to trees, fences, or buildings.



6. SHOW RESPECT FOR SIGNS & STRUCTURES

Don't tamper with or damage County signs, buildings, or other improvements.



7. KEEP THE AREA CLEAN

Do not dispose of landscaping materials, yard clippings, waste, building materials, topsoil, sand, or rocks on these lands.



8. RESPONSIBLE CHEMICAL USE

Do not discard hazardous materials or use pesticides, herbicides, or fertilizers on the land.



9. RESPONSIBLE WASTE DISPOSAL

Pack out any waste you pack in or utilize designated waste bins.



10. NO CAMPING ALLOWED

Camping is only allowed in areas where signage permits it. Always follow the posted rules and conditions for those areas.



11. THESE ARE PUBLIC LANDS

Remember, these are public lands. Do not restrict access to others.





Joffre Site

COMMUNITY OPEN HOUSE

Tuesday, April 9, 2024

5:30 – 7:30 p.m.

LOCATION: Haynes Hall

Travelling east on Highway 11, turn north (left) on Range Road 244 for 3.3 km to Township Road 390. Cross over 390 and take first left into parking lot of Haynes Hall.



AGENDA:

5:30 – 6:30 p.m. "Drop in to Chat"
6:30 – 7:30 p.m. Presentation/Discussion

- Get business, sustainability and facility operations updates
- Discuss any topic of interest
- Provide your input and suggestions
- Fun science experiments for kids

Refreshments will be served. **We hope to see you there!**

MEET WITH COUNCIL

There are several upcoming opportunities to meet with Lacombe County Councillors and Staff about the issues and updates that matter to YOU!

Reeve Barb Shepherd (Div. 3) | Dep. Reeve John Ireland (Div. 1)

April 17 | 7 - 9PM

Haynes Hall (39002 Rge. Rd 24-3, Haynes, AB)

Reeve Barb Shepherd (Div. 3) | Dep. Reeve John Ireland (Div. 1)
Brenda Knight (Div. 2) | Dwayne West (Div. 4) | Ken Weenink (Div. 5)

April 19 (2-8 PM) & April 20 (10AM - 4 PM)

Lacombe & District Trade Show (Gary Moe Sportsplex)

Allan Wilson (Div. 6) | Dana Kreil (Div. 7)

April 23 | 7 - 9PM

Rainy Creek Remote Shop (Rainy Creek Road, near Rge. Rd. 3-0)



Scholarships available through Red Deer Polytechnic

Did you know: Lacombe County supports THREE scholarships at Red Deer Polytechnic (RDP). Students can apply from March 1-May 31 (and will be notified in June/ July if they are the successful recipient, with funds will be paid out in the fall). Learn more at <https://www.rdpolytech.ca>.

Lacombe County Leadership Scholarship

Eligibility: A student entering the first year of any Red Deer Polytechnic (RDP) post-secondary program in the upcoming academic year as a full-time student. Student must be a current or former resident of Lacombe County and have graduated from a high school within Lacombe County in the last three years.

Criteria: Academic achievement and demonstrated excellent leadership qualities through community involvement.

Value: 1 @ \$1850.00

Lacombe County Leadership Scholarship for Apprentice

Eligibility: A 1st year RDP apprentice who attended an Apprenticeship program in the most recent academic year. The apprentice must be continuing their studies in the subsequent year of the program at RDP in the upcoming academic year. The apprentice must be a current or former resident of Lacombe County.

Criteria: Academic achievement, financial need and demonstrated excellent leadership qualities through community involvement.

Value: 1 @ \$1850.00

Lacombe County Scholarship for Rural Students

Eligibility: A full-time RDP student who attended a Bachelor of Science program in the most recent academic year. The student must be continuing full-time studies in the subsequent year of the program at RDP in the upcoming academic year. The student must be a Canadian Citizen or landed immigrant. Preference given to a student who is a current or former Lacombe County resident pursuing a career in Agriculture or Agri-Business, Environmental and Conservation Sciences or Veterinary Medicine. Secondary preference to a student with a rural background.

Criteria: Academic achievement and financial need.

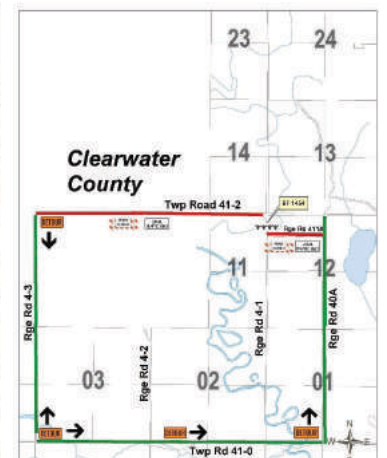
Value: 1 @ \$1850.00

Apply from March 1 to May 31. Learn more at [rdpolytech.ca](https://www.rdpolytech.ca).

CONSTRUCTION NOTICE Closure & Detour for Bridge Construction

A road closure due to Bridge Construction will begin on Monday, February 26, 2024. The closure facilitates the construction of bridge file 1454 (NE 11-41-4 W5) over Medicine River and will impact Twp Rd 41-2 and Twp Rd 411A.

Please refer to the diagram for the detour route. Directional signage will be in place. Estimated project completion date is May 31, 2024 (weather permitting). Please watch for and obey the posted signage.



Lacombe County Community Peace Officer Ray Kawai recognized for exceptional service

Lacombe County is proud to spotlight the remarkable achievements of Community Peace Officer Ray Kawai, this year's distinguished recipient of the Award of Excellence at the Alberta Association of Community Peace Officers (AACPO) conference this month. This prestigious accolade is reserved for those who consistently demonstrate an extraordinary commitment to their roles, significantly surpassing the standard expectations of duty within the community.

Ray's journey in law enforcement began in May 2009, initially focusing on highway safety as an Alberta Peace Officer. His dedication to safeguarding the roads and ensuring the well-being of Albertans has been unwavering. In 2014, he transitioned to the role of Community Peace Officer for Lacombe County, marked by the adoption of the grey stripe, yet his fervent passion for public safety and community service remained unchanged.

Throughout his 15-year tenure, Officer Kawai has been a pillar of support and guidance for his colleagues, embodying the essence of leadership and camaraderie. His commitment to mentoring new officers and assisting them through their training and evaluations has been instrumental in fostering a supportive and successful team environment.

Ray's exemplary service extends beyond the routine duties of his role. In one memorable instance, he demonstrated exceptional compassion and humanity. Upon encountering an elderly individual in distress beside their vehicle in the dead of winter, Officer Kawai did not hesitate to provide immediate and dignified assistance, despite the challenging circumstances. This act of kindness is a testament to his unwavering dedication to serving and protecting the community in any situation.

The 2023 hazard season in Alberta presented numerous challenges, with many communities facing the devastating impacts of wildfires and evacuations. Ray volunteered to assist in Drayton Valley, showcasing his deep sense of empathy and commitment to community support. His efforts in ensuring the safety and well-being of both people and their pets during this critical time highlighted his versatile capabilities and compassionate nature.

Ray's actions reflect the core values of a Community Peace Officer. His innate drive to assist those in need, combined with a profound sense of duty and compassion, sets him apart as a model of excellence in community service.

As we celebrate Ray's achievements and the significant impact he has made in Lacombe County and beyond, we are reminded of the vital role Community Peace Officers play in our society. Ray's dedication to his community serves as an inspiration to us all, embodying the true spirit of service and compassion.

Please join us in congratulating Community Peace Officer Ray Kawai on receiving the 2023 AACPO Award of Excellence, a well-deserved recognition of his outstanding service and dedication to the community.



CULVERT AWARENESS | What to know this spring



Each spring, parts of Lacombe County may experience runoff backup due to frozen culverts. Frozen culverts can create problems with the natural flow of water.

If you see a culvert backup issue, please call the County Office (403-782-6601), the County Shop (403-782-3567), or email operations@lacombecounty.com. The Operations Department will be responsible for coordinating and prioritizing action based on the need and severity of the situation. Please note that Lacombe County crews do NOT go onto private property to clean out or steam the culverts.

Lacombe County has developed a Flood Mitigation Plan to deal with flooding and flood-related issues. The plan addresses immediate, medium, and long-term processes to properly and safely manage a flood event.

Residents should be cautious and avoid venturing into unsafe areas where there may be washouts or other spring runoff. Watch for hazards and ensure the road is stable when approaching flooded areas and washouts.

Remember, your safety comes first! Lacombe County will use media releases to inform residents of road closures and dangerous areas.

We use a steamer truck for opening up frozen culverts. This piece of equipment is essential in the case of a slow melt where the temperatures drop at night, causing ice blockages. The County prioritizes its efforts to clear blocked culverts based on road usage and severity.

Extreme weather events can threaten bridges and major culverts. Localized flooding is the most common situation in Lacombe County, which is usually short-term with minor traffic disruptions.

Major flooding is more prevalent on the Blindman River and the Medicine River. The bridges south of Bentley are the most prone to possible damage. The bridges in the County's north-west area, which mostly are standard bridges, may also be threatened. Implementing detour routes for road and bridge repairs will cause inconvenience but should not isolate residents.

ECONOMIC DEVELOPMENT

LACOMBE COUNTY SPOT *light*

ONE BRIGHT DAY PHOTOGRAPHY

Meet Jess, the vibrant soul behind One Bright Day Photography, specializing in capturing the joy and vibrancy of weddings in the picturesque landscapes of Lacombe County. With a passion for sunshine, rich colours, and the countryside, One Bright Day Photography philosophy revolves around celebrating love and fleeting moments.

"I live for sunshine, rich colour and, country air," Jess shares. "Put a playful couple in the midst of that, and you've made my little photographer's heart very happy."

Jess's journey into wedding photography was unexpected but deeply fulfilling. Initially dabbling in photography as a hobby, friends repeatedly asked her to capture their special day. Recognizing her love for photography, she officially launched One Bright Day Photography twelve years ago, and the rest is history.

Despite her success, Jess remains grounded and values simplicity, preferring to focus on her love for wedding photography rather than expanding her business at this time. When not shooting a wedding, she is busy raising a young family with her husband. There is not enough time left in the day.

Throughout her years in business, Jess has learned valuable lessons, particularly the importance of adaptability. "Every couple and wedding day is completely different," she reflects. "I've learned to relax and go with the flow."

Choosing Lacombe County as her base was an easy decision for Jess. The diverse landscapes, from well-maintained trails to beautiful beaches to expansive fields, provide the perfect backdrop for her colourful and modern style. "Our area is filled with beautiful views and such friendly people," she enthuses.

Like many, Jess faced challenges during COVID-19 pandemic, with weddings undergoing significant changes. However, she persevered, adapting her approach to capture each celebration's unique emotions and subtleties.

As One Bright Day Photography continues to thrive, Jess remains dedicated to her love for photography, capturing the love and joy of couples in Lacombe County, one unforgettable moment at a time.

FOLLOW THEM ONLINE

To find out more about One Bright Day Photography, visit Jess on her website, Facebook or Instagram.

www.onebrightdayphotography.com

<https://www.facebook.com/OneBrightDayPhotography/>

<https://www.instagram.com/onebrightdayphotography>



ASSESSMENT FYI | Why are some properties exempt from taxation?

In Alberta, some properties are exempt from property taxation. These exemptions are outlined in the Municipal Government Act (MGA) and Regulations. Most commonly, these properties are held by another level of government or charitable organization and provide a charitable or benevolent purpose for the collective benefit of the general public. Generally, these properties fall into common categories such as schools, churches, hospitals, Provincial/Federal properties, agricultural societies, etc. Sometimes, properties are held by Not-for-Profit Organizations (NPO's) that provide benevolent services to the general public such as sporting or recreation facilities, subsidized housing, day cares, museum's, etc. These types of

organizations may qualify for property taxation exemption on their facilities as well. The requirements and process for a NPO to qualify for property taxation exemption are set out by the Community Organization Property Tax Exemption Regulation (COPTER).

A municipality may grant community organizations exemption from taxation if they meet the conditions specified in legislation. The organization or group must apply to the municipality for exemption by September 30th and supply any information the municipality requires by November 30th (preceding the year of taxation) so the municipality may determine if conditions for exemption have been met. Lacombe

County will be reviewing all previously exempt properties that are held by community groups which we are aware of in 2024 to verify eligibility requirements are being met. Information packages will be sent out toward the end of March to those organizations who we believe may qualify for property taxation exemption. Your organization will be asked to complete and return the appropriate form along with the necessary supporting documentation. If you believe your organization may qualify and you have not received a package, please contact the Lacombe County Assessment Department at the County Administration Office.

COUNCIL HIGHLIGHTS

February 22, 2024

AGRICULTURE SERVICE BOARD MEETING NOTES

Council reviewed the meeting notes of the January 17, 2024 Lacombe County Agriculture Service Board (ASB) meeting and approved recommendations as follows:

- That the Drought Support Programming Report be received for information.
- That the 2023 Insect Surveillance Report be received for information.
- That the 2024 Agricultural Services Operational Plan be received for information.
- That the County Manager be directed to explore options to support veterinary students practicing within Lacombe County.
- That Council consideration be given for an Agricultural Service Board Member to participate as a member of the Alternative Land Use Services (ALUS) Lacombe Public Advisory Committee.
- That the 2024 Provincial ASB Conference Resolutions be received for information.
- That the Agricultural Plastics Volume Report be received for information.
- That the 2024 – 2028 ALUS Lacombe Strategic Plan be received for information.

COMMITTEE OF THE WHOLE MEETING NOTES

The following recommendations from the Committee of the Whole meeting held on February 6, 2024 received the approval of Council:

- That the Dust Control Program Overview be received for information; and further, that the County Manager be directed to provide a report and recommendation regarding subsidy options, the number of calcium applications, and the impact of loopholes (ie. landowner applications on behalf of commercial or industrial businesses to mitigate cost) related to the Dust Control Program, for consideration at a future Council meeting.
- That the FCSS Funding Allocation and Program Review be received for information; and further, that the County Manager be directed to provide a report with further details about current FCSS servicing in Lacombe County as well as home support options for outlying communities, for consideration at a future Council meeting.
- That the Golf Carts on Municipal Roads Presentation be received for information; and further, that the County Manager be directed to prepare a report and recommendation, identifying lobbying efforts and next steps in advancing the issue of golf carts on municipal roads (including writing a letter to Minister of ATEC as well as speaking notes to address the Minister at the Spring RMA Convention), for consideration at a future Council meeting.
- That the Elizabeth Lake Presentation be received for information; and further, that the County Manager be directed to provide a report and recommendation regarding the City's request

- for County support of the Elizabeth Lake Outlet Project, for consideration at a future Council meeting.
- That the presentation on Environmental Regulatory Requirements for Municipal Operations be received for information.
- That the discussion regarding Brownfield Solar sites be received for information.
- That the Lacombe Lake Water Level discussion be received for information; and further that the County Manager be directed to send a response letter to the Alexander Family advising that the County's position remains that the control structure is being operated in accordance with the lake levels set out in the 1970 Grant of Easement and that no further action will be taken at this time.
- That Mark Sproule, Manager of Community Peace Officer Services, be directed to draft a response to the Provincial Police Advisory Questionnaire on behalf of Council for consideration at a future Council meeting.

TOWN OF BLACKFALDS REQUEST TO ACQUIRE AN INTEREST IN LAND

By resolution of Council, Lacombe County consents to the Town of Blackfalds purchasing an approximate 9.02-acre parcel of land within the County located in Lot 5, Block 1, Plan 152 0048 (SE 3-40-27-W4M) to facilitate the construction of a storm water management system.

CITY OF LACOMBE ELIZABETH LAKE OUTLET PROJECT

Lacombe County will provide the City of Lacombe with a letter of support, in principle, to change the portion of the Elizabeth Lake boundary that affects the southern end of Wildrose Street; and further, that Lacombe County supports the City of Lacombe engaging with the Lacombe County private land owner to change the Elizabeth Lake bed-and-shore boundary.

POLICY RC(9) COUNTY SUPPORT OF COMMUNITY PROGRAMS, EVENTS, & ACTIVITIES UPDATE

Council approved the following 2024 RC(9) funding applications (see table on the left)

ALBERTA COMMUNITY PARTNERSHIP GRANT APPLICATION – REGIONAL RECREATION FACILITY PLAN

The City of Lacombe has proposed the development of a long-range recreation facility plan for the City of Lacombe, Lacombe County, and the Town of Blackfalds, to be funded through an Alberta Partnership Grant, with the intent of developing a future multi-use facility. This topic will be further discussed at a future Council Committee of the Whole meeting.

RCMP ANNUAL PERFORMANCE PLANS

At the request of the RCMP Detachment Commanders in Bashaw, Blackfalds, Ponoka, Rimbey, and Sylvan Lake, Council identified crime reduction, road safety, communication, and mental health and wellness as priorities for inclusion in the Detachment Commander's Annual Performance

Lacombe County RC(9) Grant Program 2024						
Community	Applicant	Event	Amount Requested	Eligible	New	Recommended Amount
Alix	Alix Public Library	July 1st Canada Day	\$ 500	Y	N	\$ 500.00
Bentley	Bentley & District Ag Society	Bentley Fair and Rodeo	\$ 1,000	Y	N	\$ 1,186.00
Blackfalds	Town of Blackfalds	Blackfalds Day	\$ 8,972	Y	N	\$ 8,972.00
Clive	Village of Clive	Clive Funfest	\$ 1,186	Y	N	\$ 1,186.00
Eckville	Town of Eckville	Eckville Canada Day	\$ 1,500	Y	N	\$ 1,186.00
Lacombe	Lacombe Performing Arts Centre Foundation	Music in the Park	\$ 2,000	Y	N	\$ 1,000.00
Lacombe	City of Lacombe Arts Endowment Fund	Creation Station	\$ 2,200	Y	N	\$ 2,055.00
Lacombe	Lacombe Days Association	Lacombe Days	\$ 13,000	Y	N	\$ 8,000.00
Lacombe	Lacombe Regional Tourism	Canada Day Celebrations	\$ 5,000	Y	N	\$ 841.00
Lacombe County	Friends of Mirror Library Society	May Long Children's activities	\$ 660	Y	Y	\$ 500.00
Lacombe County	Mirror & District Museum	May Day Event	\$ 500	Y	N	\$ 500.00
Lacombe County	Mirror Jolly Senior Social Club	Seniors Week Open House				
Lacombe County	Mirror Recreation Society	Labour Day BBQ	\$ 500	Y	Y	\$ 500.00
Lacombe County	Mirror Recreation Society	Easter/Spring Celebration	\$ 500	Y	N	\$ 500.00
Lacombe County	Mirror Recreation Society	Children's Halloween Party & Haunted House	\$ 500	Y	N	\$ 500.00
Lacombe County	Mirror Recreation Society	Christmas Celebration (Santa	\$ 500	Y	N	\$ 500.00
Lacombe County	Mirror Association for Ball Diamonds, Campore	Fire and Ice	\$ 2,000	Y	N	\$ 1,200.00
Lacombe County	Joffre Community Association	Skate Party, Easter, Family BBQ				
Lacombe County	Tees Agricultural Society	Earth Day, Horseshoe Tournament	\$ 1,000	Y	N	\$ 1,000.00
Lacombe County	Tees Agricultural Society	Spring Chili Cook-off and Bingo	\$ 500	Y	N	\$ 500.00
Lacombe County	Tees Agricultural Society	Christmas Concert and Carol Festival	\$ 500	Y	N	\$ 500.00
Lacombe County	Birch Bay Community Association	Family Day, July 1st fireworks				
Lacombe County	Wilson Beach Estates	Beach Day BBQ	\$ 1,750	Y	N	\$ 1,431.00
Lacombe County	Ellis Bird Farm	Christmas Parade	\$ 1,000	Y	N	\$ 500.00
SV of Birchcliff	SV of Birchcliff	Canada Day, Blue Bird Festival				
SV of Gull Lake	Gull Lake Community League	Bug Jamboree	\$ 3,000	Y	Y	\$ 1,000.00
SV of Sunbreaker Cove	SV of Sunbreaker Cove	Summer Celebration	\$ 500	Y	N	\$ 593.00
SV of Half Moon Bay	SV of Half Moon Bay	Family Day, Canada Day				
SV of Half Moon Bay	SV of Half Moon Bay	Christmas Pot Luck	\$ 2,100	Y	N	\$ 593.00
SV of Sunbreaker Cove	SV of Sunbreaker Cove	Sunbreaker Cove Regatta	\$ 500	Y	N	\$ 593.00
SV of Half Moon Bay	SV of Half Moon Bay	July 1st Canada Day	\$ 500	Y	N	\$ 593.00
			\$ 65,418			\$ 36,429.00

Plans. Councillor Kreil, Councillor Weenink, and Mark Sproule, Manager of Community Peace Officer Services, were authorized as the Lacombe County representatives to meet with the Blackfalds and Sylvan Lake Detachment Commanders to discuss these priorities.

**ASPELUND JOINT ECONOMIC AREA
WATER AND WASTEWATER SERVICING**

The County Manager was authorized to enter into an agreement with the Town of Blackfalds for the upgrade of the Broadway Reservoir and Pumps to service the Lacombe County and Town of Blackfalds Joint Economic Area. The County's share of this project, estimated at \$2,540,000, will be funded from the Aspelund Water Offsite Levy Reserve.

**BYLAW NO. 1408/24 RESERVE LAND
DESIGNATION**

Bylaw No. 1408/24, a bylaw of Lacombe County to designate certain lands as municipal reserve, environmental reserve and public utility lot received first reading and approval to hold a public hearing. A public hearing for Bylaw No. 1408/24 will be held on April 25, 2024 commencing at 9:00 a.m. at Lacombe County Council Chambers.

COUNCIL HIGHLIGHTS

March 14, 2024

POLICE GOVERNANCE SURVEY

The proposed response to the Provincial Policy Advisory Questionnaire was endorsed by Council and will be submitted on behalf of Lacombe County.

**ALUS LACOMBE PUBLIC ADVISORY
COMMITTEE APPOINTMENT**

The request from Alternative Land Use Services (ALUS) Lacombe to appoint an Agricultural Service Board Member to the ALUS Lacombe Public Advisor Committee was received for information.

**RICHARDS OIL AND GAS OUTSTANDING
PROPERTY TAX PAYMENT PLAN REQUEST**

A request by Richards Oil and Gas for the proposed cancellation of late payment penalties and levies in the amount of \$42,494.54 in exchange for payment of their outstanding tax balance of \$58,513, did not receive Council approval.

**CENTRAL ALBERTA BUSINESS
ADVANTAGE SUMMIT 2024**

Council received information regarding the upcoming Central Alberta Business Advantage Summit 2024, which will be held April 22 to 26, 2024 in Olds. The purpose of the Summit is to invite small business owners, entrepreneurs, and investors from India into the Central Alberta community to encourage dialogue and foster a deeper understanding of

markets, challenges, and opportunities in the area. Representatives of Council and staff will attend the event.

**TOWN OF BENTLEY NOTICE OF
ANNEXATION**

Subsequent to Council's recent adoption of the Southeast Bentley Area Structure Plan, the Town of Bentley wishes to proceed with the annexation of the lands within the plan area. The February 27, 2024 Notice of Annexation from the Town of Bentley was received for information.

**LACOMBE FISH AND GAME ASSOCIATION
AWARDS AND GALA**

Representatives of Council will attend the upcoming Lacombe Fish and Game Association Awards and Gala event on April 13, 2024.

**MEETING WITH RCMP AT RMA SPRING
CONVENTION**

Council will meet with members of the RCMP on March 20, 2024, during the upcoming RMA Spring Convention, to discuss topics including restorative justice, crime reduction, community safety and wellbeing, copper theft, and organized crime in rural areas.

RMA SPRING CONVENTION RESOLUTIONS

Council reviewed the proposed RMA Spring

Convention resolutions. The Convention will be held in Edmonton from March 18 to 20, 2024.

BYLAW NO. 1409/24

Bylaw No. 1409/24, a bylaw of Lacombe County for the purpose of amending the Village of Alix/Lacombe County Intermunicipal Development Plan received first reading and approval to hold a public hearing. A public hearing for Bylaw No. 1409/24 will be held on April 11, 2024 commencing at 9:00 a.m. at Lacombe County Council Chambers.

**INDUSTRIAL SUBDIVISION – DOW
CHEMICAL RAIL YARD EXPANSION**

By resolution of Council, the subdivision application for 9.03 acres of Pt. SW 39-25-W4M was approved subject to several conditions.

**DAVID THOMPSON SNOW RIDERS'
ASSOCIATION**

Council received a presentation on the activities and initiatives of the David Thompson Snow Riders' Association (DTSRA).

**CLIVE SCHOOL PARENT COUNCIL
ASSOCIATION**

Council received a presentation from representatives of the Clive School Parent Council Association regarding the Clive School Playground project.

Regularly Scheduled Meetings
for Lacombe County Council

Committee of the Whole - First Tuesday of every second month at 9 a.m.

Council & MPC - Second and fourth Thursday of every month, starting at 9 a.m..

The public and media are welcome to attend all Council & MPC meetings. An agenda will be posted to the website prior to the meeting.

COUNCIL HIGHLIGHTS

Special Council Meeting | March 14, 2024

PUBLIC HEARING FOR BYLAW NOS. 1406/24 AND 1407/24

A public hearing was held for Bylaw Nos. 1406/24 and 1407/24 pertaining to proposed amendments to allow two dwellings on 10+ acre agricultural parcels. Bylaw No. 1406/24 is a bylaw of Lacombe County to amend the Lacombe County Municipal Development Plan, Bylaw No. 1238/17, as it relates to general regulations. Bylaw No. 1407/24 is a bylaw of Lacombe County to amend the Lacombe County Land Use Bylaw, Bylaw No. 1237/17, as it relates to general regulations.

Council will consider further action regarding the proposed bylaw amendments at a future Council meeting.

Council Highlights & Minutes can be found on our website at www.lacombecounty.com/en/our-government/agendas-and-minutes.aspx



AROUND THE COUNTY

Home Support Services

Reliable Housekeeping for Seniors

Trained & Screened providers

Services Offered:

- Laundry
- Kitchen, Living room, Bathroom cleaning
- Dusting
- Mopping
- Vacuuming
- Meal prep assistance
- Weekly, bi-weekly, monthly
- Lacombe, Blackfalds, Clive and Lacombe County

SUPPORTED BY:   

CALL NOW !

LACOMBE COUNTY

Did you know?
County residents within 20 km of Lacombe can book the bus for errands & medical appointments.



Please call 403-782-6637 for more information or to reserve your spot



LACOMBE FCSS HOSTS Compass for the Caregiver Program

Join us on Tuesdays from April 2 - May 14 @ 10 - 11:30 am in the LMC Rotary Room. Call @ 403-782-6637 to register.





WHAT WE DO

Alix and Area Community Resource Centre

Highlights

The **Alix Food Bank** is supported by the community through donations and partnership with the Alix Mirror Wellness Supports Society. Don't hesitate to use this resource. Please contact us, to access a food hamper. In addition, **access fresh veggies**, delivered weekly to the Centre. Available to everyone, typically on Tuesdays. Thank you Pik-N-Pak Produce for the wonderful donations and volunteers who help to make sure veggies are brought to our community every week.

We Need You!
Do you wish to be a part upcoming fundraising projects & events? Please let us know if you can help:
Ponoka Stampede: June 25 - July 1
Big Valley Jamboree: August 1-4 AND Casinos: Date TBA
More details coming soon on shifts and schedule.
We rely on the kindness of volunteers and thank you for your contributions!


Child & Youth Programming Return:
Rainbows will be coming back in April... This program is designed to help individuals gain coping skills and recognition of the feelings and emotions attached to grief, loss and life changes. If you are interested in registering your school-aged child, please contact us and a follow-up call will be made.
Hosted at the Alix and Area Community Resource Centre.


INCOME TAX ASSISTANCE: This program offers free income tax assistance, during March and April for seniors or low income tax returns. Contact us for more info or to sign up.

Services Available

- Information & Referral
- Resource Navigation
- Volunteer Services
- Family Wellness
- Meals on Wheels
- Community Services
- Adult Learning
- Alix Food Bank
- Wise Owls

alixmirrorwellness@gmail.com
Follow us on Facebook @AlixandAreaCommunityResourceCentre
www.alixcsrc.com



Monday to Thursday  **10:00 AM - 4:00 PM**

Closed all statutory holidays
Bay 1, 5008 50 Ave, Alix, AB
403-396-3369

 **PUBLIC LIBRARY BLACKFALDS**

Blackfalds' Servus Credit Union Public Library

Free memberships for Lacombe County patrons! When signing up provide your legal land description.

Programming

Caregiver & Tot Duplo Club *Ages 0-4*
Creative Explosion *Ages 3+*
Tasty Tales Story Time *Ages 3-7*
Reading Buddies *Ages 6-10*
Youth Art Club *Ages 10+*
Cribbage Club *Ages 18+*
Dungeons and Dragons tabletop roleplaying games
Multiple Youth & Adult sessions

***For more program information check out our website and social media**

Borrowing

Our library card gives you access to a variety of services, eResources such as eAudio, eBooks, eMagazines & more!

Visit us on our website & social medias




Hours

Sunday	1 pm - 5 pm
Monday	10 am - 8 pm
Tuesday	10 am - 6 pm
Wednesday	10 am - 8 pm
Thursday	10 am - 6 pm
Friday	10 am - 6 pm
Saturday	10 am - 5 pm

Contact

403-885-2343
www.blackfaldslibrary.ca
Eagle Builders Centre 5302 Broadway Avenue, Blackfalds, AB T0M 0J0

MIRROR & COMMUNITY MARKET



SUNDAY APRIL 7TH
11AM-3PM
 5102 50 AVE
 Mirror Community Hall

RENT OUR KITCHEN FOR A "POP UP" LUNCH!

\$10 TABLE RENTAL

LOOKING FOR BUSKERS!

MESSAGE OUR PAGE
 "MIRROR AND COMMUNITY MARKET FUNDRAISER"
 OR EMAIL mander088@hotmail.com
 TO BOOK YOUR SPOT

CALLING ALL FARMERS

WE NEED YOUR HELP!



HELP CREATE AN ALBERTA-MADE SOLUTION

PARTICIPATE IN OUR SURVEY TO GROW THE FUTURE OF MENTAL HEALTH IN ALBERTA.



fcss
 Lacombe & District Family and Community Support Services



ANNUAL GENERAL MEETING

APRIL 24, 2024

AT 6pm-7pm

www.lacombefcss.net

403.782.6637 5214 50th Ave LMC

fcss **fcss**
 Lacombe & District Family and Community Support Services Clive Family and Community Support Services

SPRING FILL A FRIDGE



Applications Open
 Serving Lacombe & County, Bentley, Clive, Alix & Mirror
 403-782-6637 or online Applications
 OPEN - March 15, 2024
 CLOSE - April 19, 2024

Due to the kind donations for the Fill A Fridge we are able to offer this program in Spring 2024



Free Income Tax Filing

FCSS Volunteers trained by the CRA can help file returns for individuals with LOW TO MODEST INCOMES & WITH SIMPLE TAX SITUATIONS.

Opens: March 1, 2024
Closes: April 30, 2024

Eligibility for the Community Volunteer Income Tax Program:
 Individual: Maximum total income \$35,000
 Couple: Maximum total income \$45,000
 add \$5,000 for one dependent \$2500 for each individual dependent

Your tax situation is not simple if you are:
 Self-employed, have a business or rental income and/or expenses, have capital gains or losses, have filed for bankruptcy, are completing a tax return for a deceased person.

fcss **fcss** **fcss**
 Lacombe & District Family and Community Support Services Bentley Clive Family and Community Support Services

LACOMBE BENTLEY CLIVE
 403-782-6637

Supports for Seniors

Did You Know? There is financial assistance available for Seniors over the age of 65 for household assistance such as housekeeping, snow removal, or grass cutting?





Special Needs Assistance for Seniors considers specific items that fall into one of the following three categories:

Appliances/furniture | Health supports
Personal supports

MORE INFORMATION AT:
<https://www.alberta.ca/seniors-special-needs-assistance.aspx>

MORNINGSIDE HALL UPDATES & EVENTS

There are many exciting activities coming to Morningside Hall in 2024!

April 11: Board Meeting | 7:00 PM

April 19: Pancake Supper/Card Games
 5:00 PM | Dinner

May 14: Annual General Meeting (AGM)
 Taco Bar / Bottle Drive
 6:00 PM | Doors Open
 6:30 PM | Dinner
 (Meeting to follow)

May (Date TBD): Spring Clean Up

To learn more, please contact Glynnna Thompson at 403-872-4254.



FREE Preschool Program "STAY & PLAY" at the MIRROR LIBRARY

Every TUESDAY from 10:30 to 12:30

Playful activities! Lots of Fun For Children 0-5 & their caregivers!

FOR MORE INFORMATION SEE:
facebook.com/booksinmirror
 or
facebook.com/lacombefcn
 or email frnlacombe@gmail.com

HAYNES HALL AGM

WE WILL BE DISCUSSING HOW THE PAST YEAR WENT AND WHAT WILL BE COMING UP FOR NEXT YEAR

WE ARE ALWAYS LOOKING FOR NEW MEMBERS TO JOIN TO BRING NEW PERSPECTIVES. THERE WILL BE A TREASURER POSITION UP FOR GRABS TOO!!

APRIL 3, 2024 AT 7PM

Mary C Moore Public Library Overdue Book Club
Last Tuesday of the Month at 7pm in the Read & Relax

Jan 30	Feb 27	March 26	April 30
May 28	June 25	July 30	Aug 27
Sept 24	Oct 29	Nov 26	Dec 10: 2024 Wrap-Up Party

*Dates listed are the 2024 discussion dates for the selected book.
New members are welcome!
Contact Miranda for more information on this club:
miranda.cl@pmlab.ca
lacombe.library.com/book-club

YOUTH OF LACOMBE MARCH BREAK
2PM-6PM
THE KINSMEN PROGRAM ROOM AT THE LMC
FREE FOR GRADES 7 TO 12
DIFFERENT PROGRAMS HELD EACH DAY
SNACKS PROVIDED

MARCH 25	NAILED IT PAINT MARY C MOORE PUBLIC LIBRARY & AHS
MARCH 26	D&D AND OTHER GAMES WOLF CREEK BGC
MARCH 27	BINGO & TRIVIA FAMILY RESOURCE NETWORK
MARCH 28	ESCAPE ROOM FCSS & BBBS

COME FOR ONE DAY OR COME FOR THEM ALL
REGISTRATION REQUESTED
REGISTER BY QR CODE:

Logos: FCSS, Big Brothers Big Sisters, bgc, Alberta Health Services, City of Lacombe

gull lake centre
gulllakecentre.ca

Summer Camps
Come Dive In to Summer!
Discover camps for kids ages 5-18, just 15 minutes outside of Lacombe.
Sign up now at gulllakecentre.ca

Tees Chili Cook-off and Family Fun Bingo – Saturday April 13

The Tees Ag. Society is hosting a Chili Cook-off followed by an evening of Family Fun Bingo. Submit your favorite chili to the community test. Or come and sample the chilies, select the winner and then join us for Bingo games.

All ages welcome. Many prizes to be won!!

When: Saturday, April 13
Where: Tees Community Hall
Time(s): 5:30 pm – Chili Cook-off entries (please bring your chili in a slow cooker)
6:00 pm - Chili tasting and supper
6:30 pm - Bingo Card sales begin
7:00 pm - Bingo Games begin
Cost: \$5.00/person, \$20.00/family for chili supper complete with fixin's
Free supper for cook-off entrants
Bingo cards are \$1 each and are good for the evening.

Enter a Chili: Contact Dave at 403-396-3739 or daveremick@yahoo.ca
More information: Contact Carla at 403-784-3055 or 587-447-8199

Special thanks to Lacombe County for sponsoring this event!!

Make a SPLASH at the Kinsmen Aquatic Centre

5429 53rd Street

The Gary Moe Sportsplex is home to the Kinsmen Aquatic Centre (KAC). Come take a dip at the Kinsmen Aquatic Centre. We offer a climbing wall, small slide, rope and many special events throughout the year.

What's Happening at the pool:

- Check our schedules for special March Break programming. The March break schedule runs March 25-29, 2024.
- Friday, March 29 and Monday, April 1 are Public Swim are 1:00-5:00 pm only due to the Stat holidays.
- Escape the Freeze with the Kinsmen Aquatic Centre Beach Bash April 6, 2024 from 1:30-4:30 pm. Tickets on sale now at the pool office.

For more information on the KAC schedule, pool rentals and advanced courses call 403.782.1278 or visit www.lacombe.ca/pool.



Camp Silverside Invites YOU in 2024!

We are excited about the upcoming summer camp season! We have some new activities under development, great staff returning, and all the favorites your kids love. Registration is open and we think you will be able to find a camp that fits no matter the age of your children from grade 1 to grade 12.

Register online at <https://silversides.ca/camp-2024>, or contact the camp with any questions.
See you this summer
403-478-2689
campsilversides@onehopecanada.ca



A Summer Camp for Everyone

Family Camp - June 28 - July 1 - \$350/family

Squirt Camp - July 2-5 - \$200 (Grades 1-3)

Adventure Grades 4-6- July 7-12, July 28-Aug 2- \$380

Explorer Grade 2-4 - July 14-19, Aug 4-9- \$355

Middle School Mayhem Grade 6-9- July 21-26 - \$395

Teen-A-Palooza - August 11-16 - \$395 -

(Grade 8-12)

APRIL 26 & 27 2024

VESTA ENERGY Presents

ENCORE ART SHOW

A CELEBRATION OF THE ARTS

lacombe.ca/artsale

FRIDAY APRIL 26
Featured Artist Marlene Kallstrom Barritt's Presentation - 2pm
Brushstroke For A Cause Artist Paint-Off - 6pm to 7pm
Artful Libations - 6pm to 8pm- Quench your thirst with a selection of craft brews, and mouth-watering appetizers

SATURDAY APRIL 27
Featured Artist Marlene Kallstrom Barritt's Presentation - 2pm
Brushstroke For A Cause Artist Paint-Off - 3pm to 4pm
Artful Libations - 2pm to 4pm - Quench your thirst with a selection of craft brews, and mouth-watering appetizers
Student Art Awards & Art Endowment Fund Presentation - 4pm

HOME ALONE & FIRST AID TRAINING

An interactive class for youth at least 10 years of age. Prepare your child for the important step of being able to stay home alone safely. Being home alone can be an uncomfortable and unsafe situation without some basic skills. Those safety, first aid, and comfort skills are covered in this course through interactive games and role playing. Let's work to keep our children safe and confident.



\$10.00

fcss
Clive Family and Community Support Services

YOUTH PROGRAMMING

MAY 17, 2024
9:30 a.m. - 12:00 p.m.

Scan code to register online or call the office
403-784-2020
5107-50th Ave, Clive



lacombe memorialcentre

The perfect place for people to connect.

Book your upcoming event now!

- training/workshops • meetings
- anniversaries • weddings
- celebrations of life • exercise classes

Visit www.lacombe.ca/lmc or call 403-782-6668

Home of Anna Maria's Cafe, Mary C. Moore Public Library, Lacombe & District FCSS and the Lacombe & District Chamber of Commerce.

Need financial assistance with room rentals?
See if you qualify at lacombe.ca/grants



VOLUNTEERS NEEDED

So **ALL** Kids Can Play!

HELP US ENSURE ALL KIDS ARE ABLE TO PLAY THE SPORT OF THEIR CHOICE!

MULTIPLE POSITIONS AVAILABLE!

Email us to learn more or get involved:
lacombe@kidsport.ab.ca



BENTLEY BOUTIQUE

Use west entrance beside bay door.
Bentley Long Term Care Facility
4834 - 52 Avenue, Bentley

Open Tues/Thurs 10-12 & 1-3

Stretch Your Budget.



Recycle Clothing

ALL FOR JUST A SMILE!

Swap Kids Clothes As They Grow

Interactive Family Programming for ages 0-6

Mondays 9:30 to 11
Literacy & Music

Fridays 9:30 to 11:30
Stay & Play

Location: Basement of Town Office
Contact: Community Services 403-748-2160
Programs Facilitated by: Parenting Proactively 101



Have a **NEW** idea to build community?



\$100,000 in available funds

COMMUNITY BUILDER PARTNERSHIP

Intake dates are **March 29 & August 30**
For more information call 403-782-1251 or visit lacombe.ca/grants

Bentley Library Society AGM

May 14, 2024 at 7:30pm | Bentley Municipal Library
All interested are invited to attend.



Forshee Hall AGM

Join us at the Forshee Hall for a potluck, and card night after our Annual General Meeting. Share your ideas and vision for our community hall.

Bring your favorite dish to share

Sunday, March 24th @ 4 PM

More information: forsheehall@gmail.com

LACOMBE COMMUNITY

Volunteer AWARDS 2024

LACOMBE FCSS & DISTRICT AND THE CITY OF LACOMBE

DINNER & ENTERTAINMENT

THURSDAY **APRIL 18** LACOMBE MEMORIAL CENTRE

Every Moment Matters

TICKETS \$5 OR TABLE OF 8 \$40
DOORS OPEN AT 5:30 PM | CASH BAR

NOMINATE A VOLUNTEER OR PURCHASE TICKETS
WWW.LACOMBEFCSS.NET

PRESENTED BY   FUNDED BY 

Lacombe Arts Endowment Grant 2024 Call for Submissions

Open to Artists of all forms and mediums



The Lacombe Arts Endowment Committee is happy to announce grant funding is available to artists looking to further their development, education and training in the arts. There are no age restrictions, and all local artists are encouraged to apply.

\$2,500 Maximum Per Grant

Details are available online at www.lacombe.ca or by calling 403-782-1258. Application packages can also be picked up in person at City Hall.

Application Deadline is March 29, 2024

APRIL 2024

Sun	Mon	Tue	Wed	Thu	Fri	Sat
31	APRIL 1 EASTER MONDAY (Office Closed)	2 Committee of the Whole	3	4	5	6
7	8	9	10	11 County Council 9AM	12 County News Submission Deadline	13
14	15	16	17 Ratepayer Meeting 7PM (See Page 2 for full details)	18	19 County News Published <div>Lacombe & District Tradeshow</div>	20
21	22	23 Ratepayer Meeting 7PM (See Page 2 for full details)	24	25 County Council 9AM	26	27
28	29	30	MAY 1	2	3	4

Upcoming Events: APRIL 11-12: Farmer's Pesticide Certification Course | APRIL 25: Reserves Bylaw Public Hearing (9:30AM) | MAY 9: County Council | MAY 20: Victoria Day (OFFICE CLOSED) | MAY 23: County Council

Help us promote YOU!



Do you know a **business, person, place or volunteer** you want to see profiled in County News?

Do you have a photograph you want to share?

If so, email **communications@lacombecounty.com** with your ideas, photographs or stories.

We'd love to hear from you!

Proudly Maintaining Your Highways
Counties: Lacombe | Ponoka | Red Deer | Wetaskiwin
Report road conditions 24/7
1 877 875 3263

Follow us online, and stay up-to-date on Lacombe County news, events and other information!

facebook.com/LacombeCounty

instagram.com/lacombecounty

twitter.com/LacombeCounty

youtube.com/LacombeCounty

www.lacombe-county.com

Phone | 403.782.6601 Email | info@lacombecounty.com Fax | 403.782.3820

COUNTY NEWS

is published by Lacombe County and printed by CentralWeb.
If you have feedback or story ideas, please contact:
Nicole Plewis, Communications Coordinator
communications@lacombecounty.com
403.782.6601

Lacombe County Directory

RR3, Lacombe Alberta T4L 2N3 www.lacombecounty.com

Department Numbers:	Main Office - 403-782-6601	
	Planning Services - 403-782-8389	
	Community Services - 403-782-8959	
	Operations - 403-782-8379	
	Public Works Shop - 403-782-3567	
General		
After Hours Emergency Answering Service	403.357.1210	
Administration Fax	403.782.3820	
Public Works Fax	403.782.5356	
For Service Requests, see our website - or phone the switchboard at 403-782-6601		
Council	Home	Cell
John Ireland, Div. 1 (jireland@lacombecounty.com)		403.392.3981
Brenda Knight, Div. 2 (bknight@lacombecounty.com)	403.788.2168	403.550.2168
Barb Shepherd, Div. 3 (bshepherd@lacombecounty.com)		403.340.9724
Dwayne West, Div. 4 (dwest@lacombecounty.com)		403.660.2328
Ken Weenink, Div. 5 (kweenink@lacombecounty.com)		403.350.8014
Allan Wilson, Div. 6 (awilson@lacombecounty.com)		403.506.3735
Dana Kreil, Div. 7 (dkreil@lacombecounty.com)	403.746.3607	403.358.9400
Senior Administration		
Tim Timmons, County Manager ttimmons@lacombecounty.com	Call 403-782-6601 to speak with the County Manager or with a Lacombe County Director	
Michael Minchin, Director of Corporate Services mminchin@lacombecounty.com		
Bill Cade, Director of Operations bcade@lacombecounty.com		
Dale Freitag, Director of Planning Services dfreitag@lacombecounty.com		
Dion Burlock, Director of Community Services dburlock@lacombecounty.com		