



# County News

Friday, May 17, 2024 | Volume 5

## Let's Talk Business: Lacombe County launches Business & Expansion (BRE) Survey

Lacombe County is excited to announce the launch of our [Business Retention and Expansion \(BRE\) Survey](#). We are calling upon the business community to complete a 5- to 10-minute BRE survey to plan for future economic development activities focused on the top priorities of local businesses. Your input is invaluable in helping the County understand the current business climate, identify challenges, and explore opportunities for growth within our community.

"Launching our Business Retention and Expansion Survey marks a pivotal moment in our journey towards sustainable growth. We're not just asking for your input—we're counting on it," said Kerrie Taylor, Economic Development Officer for Lacombe County.



Your perspective matters, and your participation in the Business Retention and Expansion Survey is crucial in shaping the roadmap for our community's economic future. Let's work together to build a strong, sustainable, resilient economic landscape in Lacombe County."

The BRE survey provides the County with essential insights into:

- **Business Needs and Challenges:** Understanding the specific needs and challenges businesses face in our community allows the County to tailor support programs and resources more effectively.
- **Growth Opportunities:** Identifying growth opportunities helps the County align our economic development efforts with the evolving needs of local businesses, fostering innovation and sustainable development.
- **Policy Development:** Results inform policy decisions to create a conducive business environment, promote entrepreneurship, and attract investment.

A third-party vendor, Schollie Research & Consulting, will manage the survey and conduct the analysis.

The survey opened on May 7 and runs until May 24, 2024. [Access the survey here](#)

All local Lacombe County businesses are encouraged to participate in the survey and contribute to shaping the economic future of our community.

For more information on the Business Retention and Expansion Survey, visit the section on the Lacombe County website.

### What's Inside

- 2 PUBLIC HEARING | QEII West Area Structure Plan
- 3 PUBLIC HEARING | Municipal Development Plan & Land Use Bylaw Updates
- 4 NOVA Chemicals Maintenance Info for Summer 2024
- 5 Mirror Corner | Resources & events
- 6 Tree Sales start May 21
- 9 Water Conservation Tips
- 10 INTRODUCING | 2024 Weed Inspectors for Lacombe County
- 11 JUNE 20 | ManVan at Lacombe County
- 11 Events at Ellis Nature Centre
- 12-13 Subdivision & Development Activity Map
- 14 Sargent Community Society leaves its legacy
- 16 Business Spotlight: Hands Off Zoom Park
- 17 Ag Business SPOTlight: Horse Connect
- 18-19 Council Highlights
- 20-23 Around the County: Events & Info

[www.lacombecounty.com](http://www.lacombecounty.com)

## Lacombe County 2024 property assessments/ tax notices mailed-out

Municipal property assessments and tax notices were recently mailed out to Lacombe County ratepayers. Residents can expect to receive their 2024 notices in the coming weeks. If you have not received your notice by June 1, 2024, please contact Lacombe County's Assessment Department at 403-782-6601.

"We encourage ratepayers to be proactive and ensure they have received their assessment and tax notice from Lacombe County," said Michael Minchin, Director of Corporate Services at Lacombe County. "It is es-

sential to review the notice promptly to verify the information and address any concerns in a timely manner."

**Property owners are required to pay their taxes by the deadline, which is August 31, 2024. Please note that penalties will be applied after this date, even if you have not received an official tax notice.**

The County's assessment and tax notice is a combined document. Here are some key points to consider:

- Anyone wishing to appeal their assessment has 60 days from

the notice of assessment date to do so. The appeal date is clearly indicated on your notice of assessment.

- o Please be aware that a per parcel fee will be charged for individuals filing complaints against assessments.
- o The fee will be refunded if the Assessment Review Board decides in favour of the complainant.

**ARTICLE CONTINUES ON PAGE 3**



Publication Mail Agreement No 43726064

Return undeliverable items to:  
Lacombe County  
RR3, Lacombe, AB T4L 2N3

County News is available to read on our website every month. If you wish to stop receiving County News by mail, email [communications@lacombecounty.com](mailto:communications@lacombecounty.com) with your mailing address and we will take you off our mailing list.

# (Continued) Tax Notices mailed out

- The property tax payment deadline is August 31, 2024.
  - o Property owners who miss the tax payment deadline will face a 6% penalty on the outstanding taxes owed starting September 1, 2024.
  - o An additional 10% penalty will be added on December 1 for all unpaid taxes after November 30.
- Don't Procrastinate! Lacombe County has a zero-tolerance policy for late payments.
  - o Didn't receive your assessment/tax notice? Contact us right away!
  - o See an error on your assessment notice? Contact us right away!
  - o Received your assessment/tax notice? Pay it TODAY, and avoid any late payment worries!
- Don't want to pay it all at once (or do you find you're always last-minute)? **Sign up for the Tax Installment Payment Plan (TIPP).**

"Like other online bill payments, there may be a processing delay for online tax payments. Therefore, individuals planning to pay their taxes through electronic banking should not leave it until the last minute," advised Minchin. "To avoid all penalties, Lacombe County must receive tax payments by the last business day in August."

Michael Minchin, Director of Corporate Services at Lacombe County, added, "We recognize the importance of timely tax payments for the smooth functioning of our community. It is crucial for residents to fulfill their obligations and submit their payments by the specified deadline. We are here to assist and answer any questions related to property assessments and tax notices."

**See Page 19 for payment details, as well as to understanding YOUR responsibilities in tax payments.**

## Lacombe County is holding a PUBLIC HEARING

to update the *QEII West Area Structure Plan*

BYLAW NO. 1414/24

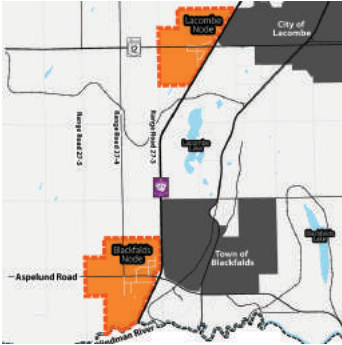
Lacombe County is holding a PUBLIC HEARING to hear your input on the proposed QEII West Area Structure Plan! The lands west of the QEII Highway, west of the City of Lacombe and Town of Blackfalds, represent the most attractive lands for future business industrial and commercial development in the County. This Plan provides a framework for future commercial and business industrial development opportunities at strategic nodes while protecting the agricultural community's right to continue farming.

**WHAT IS A PUBLIC HEARING?**


A Public Hearing presents the proposed bylaw, and gives members of the public an opportunity to speak to Council about it and provide input before adoption. Your input is valued and encouraged.


Anyone wishing to comment on the proposed bylaw will have an opportunity to do so at the Public Hearing.

**PLAN AREA**



**WHEN IS THE PUBLIC HEARING?**

 **Thursday, June 13, 2024**

 **9:00 AM**

**HOW DO I PARTICIPATE?**


Participate in the public hearing to voice your opinion. There are 3 ways you can provide input!

- Attend and speak in person**  
**Lacombe County Office, Council Chambers**  
*Located 2½ miles west of Highway 2 at the intersection of Spruceville Road and Highway 12*
- Attend and speak virtually**  
**Join by Zoom or by Phone**  
Instructions for accessing the meeting by phone or computer/laptop can be found on the County's website at [www.lacombecounty.com/virtual](http://www.lacombecounty.com/virtual)
- Provide written comments**  
If you are unable to attend the Public Hearing but want to provide input, please send your comments to Planning Services prior to June 13, 2024. Your comments can be sent by:  
**EMAIL** [planning@lacombecounty.com](mailto:planning@lacombecounty.com)  
**FAX** 403-782-3820, or  
**MAIL** RR 3, Lacombe AB, T4L 2N3

*All submissions will be public information.*

For more information contact Planning Services  
Cajun Paradis, Senior Planner  
Nick Baran, Planner / Development Officer  
403-782-8389 or [planning@lacombecounty.com](mailto:planning@lacombecounty.com)

or learn more at  
[www.lacombecounty.com/QEIIWestASP](http://www.lacombecounty.com/QEIIWestASP)



# ASSESSMENT FAQs | 2024 Municipal Property Assessment

Why property inspections are essential for assessment?  
The information we collect about a property must be current so that assessors can prepare an accurate and equitable assessment of your property and other similar properties in the municipality each year. This is especially important if the property has recently changed ownership or if renovations or modernizations have been completed.

When we arrive at a property, we will attempt to make contact at the residence or primary building and are happy to explain why we are there and what we are doing. Each Lacombe County Assessor carries an ID.

We will do our best to answer your questions during the inspection; however, some inquiries require further research and information. If this is the case, we may request contact information, so follow-up can be done to answer your questions.

**RECREATIONAL USE - DID YOU KNOW?**  
Some of our rural property owners use their land for more than agriculture, some also have private camping facilities they've added to their parcels. Landowners have enquired about the tax implications resulting from these uses. Assessors are required to update the records to reflect the "use as found", whether a development permit has been issued or not, when one of these sites is brought to our attention or we find it via our regular re inspection cycles. A regulated area of land at market value as well as any improvements will be added to the roll when these sites are identified. Many of these sites are gated with restricted access, where possible we leave a call back card and/or update any changes found using any information available to us including an inspection, aerial photography, planning and development or safety codes information. Assessors appreciate the assistance of property owners to collect the necessary information to prepare the assessment. The assessment and tax notice will be mailed to the registered owner of the land the following year.

**GRAVEL AND SAND PITS - DID YOU KNOW?**  
Gravel and sand pits often cycle through periods of activity including being dormant before they are reclaimed. If you own property with a gravel or sand pit that is intended for reclamation or has been reclaimed in the past year please contact an assessor so we can update your record to reflect the status of the pit.

**FOR YOUR INFORMATION**  
Lacombe County municipal Assessors will be reviewing and visiting properties throughout the municipality this year to verify property information to ensure accurate and equitable assessments – we appreciate your cooperation in doing so. Our assessors carry identification and will present it upon request. If you have questions or concerns, don't hesitate to get in touch with us at the Lacombe County Administration Office.

Follow us online, and stay up-to-date on Lacombe County news, events and other information!

[facebook.com/LacombeCounty](https://facebook.com/LacombeCounty)

[instagram.com/lacombecounty](https://instagram.com/lacombecounty)

[twitter.com/LacombeCounty](https://twitter.com/LacombeCounty)

[youtube.com/LacombeCounty](https://youtube.com/LacombeCounty)

[www.lacombecounty.com](http://www.lacombecounty.com)



## Lacombe County is holding a PUBLIC HEARING



to update the Municipal Development Plan & Land Use Bylaw

BYLAWS NO. 1412/24 and 1413/24

Lacombe County reviews the Municipal Development Plan and Land Use Bylaw each and every year, to ensure the documents continue to support our community's vision. If you are a County landowner, resident, or business, we encourage you to participate in the upcoming Public Hearing and provide feedback on the proposed changes.

Back in 2017 when the Municipal Development Plan and Land Use Bylaw were adopted, the County committed itself to accountable and transparent decision-making and annual progress reporting. This allows the County to strive for continual improvement each year and ensures the documents are 'living documents', continuing to stay up-to-date with trends in land use planning, development pressures in the area, and the needs and desires of the local community.

### WHAT IS A PUBLIC HEARING?

A Public Hearing presents the proposed bylaw, and gives members of the public an opportunity to speak to Council about it and provide input before adoption. Your input is valued and encouraged.

Anyone wishing to comment on the proposed bylaw changes will have an opportunity to do so at the Public Hearing.

### WHEN IS THE PUBLIC HEARING?



**Thursday, June 13, 2024**



**9:15 AM**

### HOW DO I PARTICIPATE?

Participate in the public hearing to voice your opinion. There are 3 ways you can provide input!

**1**

**Attend and speak in person**  
Lacombe County Office,  
Council Chambers

*Located 2½ miles west of Highway 2 at the intersection of Spruceville Road and Highway 12*

**2**

**Attend and speak virtually**  
Join by Zoom or by Phone

Instructions for accessing the meeting by phone or computer/laptop can be found on the County's website at [www.lacombecounty.com/virtual](http://www.lacombecounty.com/virtual)

**3**

**Provide written comments**

If you are unable to attend the Public Hearing but want to provide input, please send your comments to Planning Services prior to June 13, 2024. Your comments can be sent by:

**EMAIL** [planning@lacombecounty.com](mailto:planning@lacombecounty.com)  
**FAX** 403-782-3820, or  
**MAIL** RR 3, Lacombe AB, T4L 2N3

*All submissions will be public information.*

For more information  
contact Planning Services  
Cajun Paradis, Senior Planner  
403-782-8389 or [planning@lacombecounty.com](mailto:planning@lacombecounty.com)

or learn more at

[www.lacombecounty.com/annualreview](http://www.lacombecounty.com/annualreview)



# Sowing seeds of excellence in Lacombe

The Government of Alberta is establishing Western Crop Innovations (WCI), a new non-profit focused on agriculture research and crop development.

Alberta is a global leader in agriculture research, which results in tangible benefits for farmers, like higher profits and a more abundant food supply at an affordable cost for consumers.

To help further the development and continued innovation of agriculture research, the Field Crop Development Centre (FCDC) has been relaunched as Western Crops Innovations, a non-profit corporation with an interim board. A new structure will revitalize this organization, promote a renewed vision, and better position Alberta to meet the agriculture industry's needs.

"It's an exciting time for crop research in Alberta. Western Crop Innovations will carry on the Field Crop Development Centre's substantial legacy, ensuring its work is addressing the issues farmers are facing in the fields," said RJ Sigurdson, Minister of Agriculture and Irrigation.

Officially starting up April 1, WCI will carry on the FCDC's important research, including its well-known barley breeding program. Its current programming will undergo a review, and where necessary, will be transitioned to ensure crop innovations support Alberta's farmers' needs now and into the future.

The interim board, made up of representatives from government and industry, will lead WCI and the transition process. The new model will include integrated funding that connects government, industry, and post-secondary institutions.

"Considering my farm's proximity and history with FCDC, I'm happy to help guide Western Crop Innovations to conduct research and development leading to commercialization of superior crop varieties that will benefit Alberta and western Canadian agriculture sectors," said Jason Lenz, chair, Western Crop Innovations.

### Interim board members

- Jason Lenz, chair
- D'Arcy Hilgartner, vice-chair, Results Driven Agriculture Research
- Fred Lozeman, former finance chair, Alberta Beef Producers
- John Conrad, assistant deputy minister, Agriculture and Irrigation

### Funding

- The anticipated cost of WCI's first year is \$3.5 million.
- Government will be contributing \$3.2 million, with industry support to be determined.

Let's talk business  
**WE WANT TO HEAR FROM YOU**

Calling all Lacombe County Businesses!!  
Lacombe County is currently running a Business Retention & Expansion Study!  
Be a part of the Economic Growth of our County!

For more information visit our website  
[www.LacombeCounty.com/buildingcapacity](http://www.LacombeCounty.com/buildingcapacity)

SCAN ME TO TAKE SURVEY NOW!

## Billets Wanted for Local Veterinary Students

Lacombe County is inviting residents to host veterinary students during their rotations at local vet clinics. This is a wonderful opportunity to support the education of future veterinarians.



Lacombe County will maintain a list of available hosts and share this information with veterinary clinics, helping to connect students with local accommodations.



Residents can host students for rotations of 2, 4, or 6 weeks, providing flexible options to fit different schedules.

**INTERESTED? | Please contact Lacombe County at 403-782-8959 or email [mbates@lacombecounty.com](mailto:mbates@lacombecounty.com)**



# SAFETY FIRST



Community Notice:

## Joffre Site Planned Maintenance for Summer 2024

Beginning in early June, our **Advanced SCLAIRTECH 1 (AST1) polyethylene unit will shut down for a scheduled maintenance turnaround.** The outage is estimated to last until mid-July. Following the execution of the AST1 turnaround, NOVA Chemicals' **Ethylene 2 unit will shut down for a scheduled maintenance turnaround.** This outage will occur mid-August to late September.

### What can you expect?

- 1,000 (June/July) — 1,900 (August/September) contractors on site at peak times
- Flaring during plant shutdown and start-up

**Minimizing impacts on the community is always a key area of focus. During turnarounds NOVA is:**

- encouraging carpooling with our NOVA TO GO app
- staggering shifts
- utilizing three access gates to site
- including road etiquette in contractor orientation



### What is a turnaround?

Turnarounds offer us the opportunity to conduct maintenance and renewal of our facilities outside of our day-to-day maintenance activities.

### Why do we flare?

Flaring is considered to be a safe, environmentally acceptable way to dispose of hydrocarbons — required when a plant needs to isolate for maintenance activities and during emergency events.

### Want to stay up to date on Joffre Site activity?

You can call the Joffre Site Operations Information Line (403.314.2882) or **sign up for Texts from NOVA** by scanning the QR code or visiting [novachem.com/Joffre](http://novachem.com/Joffre)



SCAN ME to stay up to date!

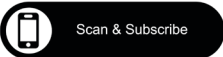
If you have questions about this activity, call our 24-hour number **403-314-8767** or email [joffresite@novachem.com](mailto:joffresite@novachem.com)

For more business and environmental information, please visit: [www.novachem.com/Joffre](http://www.novachem.com/Joffre)

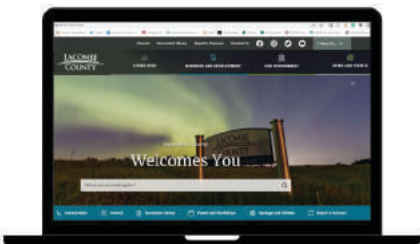


## STAY IN THE KNOW!

<https://subscribe.lacombecounty.com/Subscribe> to receive emails on:



News/  
Announcements  
Events  
Council Meetings  
Safety Alerts  
Construction  
Notifications  
OR...Subscribe to  
Individual pages of interest



# ROAD PARTIES

**WOULD YOU LIKE TO BUILD A STRONGER COMMUNITY AND MEET YOUR NEIGHBOURS?**

**LET RED DEER LACOMBE RURAL CRIME WATCH HELP**

**YOU ORGANIZE A ROAD PARTY go to "www.rdruralcrimewatch.com"**

Stop by and pick up a kit to assist with the organization of your party at:  
Blackfalds RCMP Office  
Red Deer County Office  
Lacombe County Office

## LET'S BUILD COMMUNITY

**With stronger communities we can manage:**  
**Rural Crime**  
**Assist with Mental Health**  
**Assist our neighbours when needed**  
**And have FUN, Making your community more friendly!**

**FOR MORE INFORMATION**  
WEB PAGE : <https://www.rdruralcrimewatch.com>  
Facebook: Red Deer/Lacombe Rural Community Crime Watch  
Email: [Rdruralcrimewatch@gmail.com](mailto:Rdruralcrimewatch@gmail.com)

## GOLF CARTS & ELECTRIC SCOOTERS - Road Use

### DID YOU KNOW

Golf carts and electric scooters are classified as prohibited miniature vehicles under the Traffic Safety Act and Lacombe County Bylaws.

This means that golf carts and electric scooters are strictly prohibited on any highway, including ditches and sidewalks alongside the roadway.

Miniature vehicles may only operate on private property or in relation to electric scooters, where Alberta Transportation has issued a permit with the approval of the municipality.

**Failing to obey these rules may not only result in costly fines, but their operation poses a risk to your safety and others.**

**For more information refer to these links:**

**GUIDE TO SMALL VEHICLES:**  
MICROSOFT WORD - SMALL\_VEHICLE\_BOOKLET\_FINAL.DOC (ALBERTA.CA)

**TRAFFIC SAFETY ACT:**  
[HTTPS://KINGS-PRINTER.ALBERTA.CA/1266.CFM?PAGE=T06.CFM&LEG\\_TYPE=ACTS&ISBNCLN=9780779838714](https://kings-printer.alberta.ca/1266.cfm?PAGE=T06.CFM&LEG_TYPE=ACTS&ISBNCLN=9780779838714)

**OFF HIGHWAY VEHICLE BYLAW:**  
[HTTPS://WWW.LACOMBECOUNTY.COM/EN/LIVING-HERE/OFF-HIGHWAY-VEHICLE-USE.ASPX](https://www.lacombecounty.com/EN/LIVING-HERE/OFF-HIGHWAY-VEHICLE-USE.ASPX)



# MIRROR CORNER



## 2024 Mirror Dog Tags

A license is required for all dogs in Mirror. The fee is \$15.00 for an altered dog and \$25.00 for an unaltered dog. After February 28, 2023, the cost increases to \$30 for an altered dog and \$50 for an unaltered dog. For more information, please call (403) 782-6601 or visit [www.lacombecounty.com/en/living-here/animal-control.aspx](http://www.lacombecounty.com/en/living-here/animal-control.aspx).

Lacombe County will issue a tag for each dog, which must be attached to a collar worn by the dog at all times. Lacombe County Enforcement Officers will do checks to ensure compliance.

If you would like to report a contravention of the Dog Control Bylaw, please call 403-506-9380, or email [info@klassickennels.com](mailto:info@klassickennels.com). \*\*For animal welfare issue please contact the Alberta SPCA at <http://www.albertaspca.org/>\*\*\*

## Jolly Seniors

Pancake breakfast every second Sunday from 9 a.m.-1 p.m.

## Booking Mirror Community Hall

Call Lisa 403-788-3890 or cell 403-505-3894. Alternately you can contact Mike Carr, home 403-788-3778 or cell 403-357-8239 for hall information.

## Friends of the Mirror Library Society/Mirror Library

The Mirror Library would like to remind patrons of the many items available for borrowing. We carry books for everyone, audiobooks, DVDs, games, and puzzles.

**Hours:** Wednesdays 2-5 p.m.  
Thursdays 10 a.m. - 1 p.m.  
2nd & 4th Saturdays  
10 a.m. - 2 p.m.

Please like us at: [facebook.com/booksinmirror](https://facebook.com/booksinmirror) for the most up to date information. The Library also

has meeting spaces for rent and free Wi-Fi. Please contact us through the Facebook page or email [booksinmirror@gmail.com](mailto:booksinmirror@gmail.com).

## Mirror Royal Canadian Legion Branch 189 - 5015 50th Avenue

Meat Draws Saturday at 4 p.m. General meetings second Sunday at 1 p.m. (unless otherwise posted).

## Mirror and District Museum

Contact [mmuseum@cciwireless.ca](mailto:mmuseum@cciwireless.ca) if you would like to volunteer and for hours of operation

## CN Rail crossing delays

If you experience delays longer than 20 minutes at the Mirror rail yard crossing, call CN Rail at 1-800-465-9239. Follow the prompts and be ready to provide details shown on the crossing signal mast to CN personnel. Transport Canada may be reached at 1-888-463-0521.

## MIRROR CAMPGROUND

SEASONAL CAMPING NOW AVAILABLE!

Book a campsite for the entire 2024 season!  
Season is from May to October.

A limited number of seasonal sites are available!  
First come, first served.

Sites include a picnic table and firepit.  
All sites are unserviced.

☀️ Seasonal Rate for 2024: \$1200 ☀️

~ ~ ~

The campground also has sites available  
for daily rentals. Daily rate: \$15/night

Campground is located in Mirror, Alberta,  
south of the ball diamonds.



**FOR MORE INFORMATION**  
Email: [mabcss2023@gmail.com](mailto:mabcss2023@gmail.com)  
or visit us at [facebook.com/groups/mabcss](https://facebook.com/groups/mabcss)

MIRROR & DISTRICT MUSEUM



We need you!

your help means a lot!

## Volunteers Needed

Casino Shifts  
July 25th & 26th  
1pm-9pm & 830pm-430am  
Cash Casino Red Deer

please email [mmuseum@cciwireless.ca](mailto:mmuseum@cciwireless.ca)  
or call Deb 403 872 0272

● ● ● ● ●

ALIX MIRROR WELLNESS  
SUPPORTS SOCIETY

## SERVICES AVAILABLE TO MIRROR

- Alix and Area Community Resource Centre
- Bashaw & Area Community Resource Centre





**Wellness Services**

- Massage Therapy
- Acupuncture
- Holistic Practitioner
- Mental Health Therapy
- Nursing Foot Care

**Partner Feature**

- Family Resource Network
- Adult Learning
- Bashaw Regional Wellness Initiative
- Alix Dance Club
- Well Mannered Mutts



**Social Services**

- Food Bank
- Information & Referral
- Resource Navigation
- Meals on Wheels
- Form Support

**Seasonal Programs**

- Volunteer Income Tax Assistance
- Senior's Week
- Volunteer Appreciation
- Winter Wishes
- Joy of Giving
- Coats for Kids, Santa's Anonymous, Fill A Fridge
- Mitten Tree
- Angel Tree
- Tools for School

Please call either office for details on further programs available to Mirror.



Bay 1 & 2, 5008 50 Ave,  
Alix AB  
403-396-3369



4909 50 Street,  
Bashaw, AB  
780-372-4074

**All Ages Welcome**

- Connecting Clans
- Community Events
- FREE Weekly Veggies
- Puzzle Exchange
- Tech Support

**Child, Youth & Family**

- Cub Crew
- Moms & Tots
- Rainbows
- Family Wellness
- After-School Programs
- Safety Week
- Summer Fun
- Swimming Lessons
- Youth Outings
- Baby Clinic

**Senior & Adult**

- Wise Owls
- Senior Fun
- Lifeline
- Home Support
- Cooking Connections
- Senior Outings
- Pickleball
- Fitness Fun
- Transportation
- Healthy Families



# ENVIRONMENT

## Medicine River Watershed Society reports good news following water sampling

In 2022 the Medicine River Watershed Society (MRWS) picked up on a water sampling adventure that dated back to 2006-07.

The Medicine River, like many surface waterways, had been given a nickname some of its watershed residents felt was unfair. It had been labeled “dirty” and sometimes called that “brown river”. But why was it labeled so by some?

A solid way to challenge an assumption is with some science, an open mind to the facts and the willingness to learn from and share lessons learned. After two years of sampling, and with a commitment to a third year collecting water quality data in 2024, the unfolding story is one of “good news”. The last two years the MRWS used a citizen science type lab for testing. This approach allows the users to take a snapshot in real time of what the water quality is at the time of sampling. The seven parameters tested - water temperature, turbidity (clarity), dissolved oxygen, ammonia nitrogen, phosphorus, pH, chloride - each need more than the couple of pages to explore in detail. Suffice to say, individually and collectively, they paint a picture of the health of the Medicine River.

As for the perceived brown colour of its water? On an average day the water is clear enough to see a brown river bottom - see the photo of the water collection container on the tailgate of the truck. The colour of the river bed might be illustrated this way: think of a set of medium brown bedsheets in a top load washing machine. The wash water is clear but the colour is influenced by the colour of the sheets.

The good news tonight is an opportunity to drill into the specifics of each water quality indicator and hear the broader story of river health and wellness and learn some of the history of the watershed

In addition, there are presentations about the Alternative Land Use Services (ALUS) program in Lacombe and Red Deer Counties and the potential for funding farm-based beneficial practices through the provincial Resilient Agricultural Landscape Program (RALP).

The MRWS would be remiss to not acknowledge help received in 2023. A generous Watershed Stewardship Grant through the Land Stewardship Centre of Canada helped with cost of the lab, external staff and public presentations. The Red Deer River Watershed Alliance, specifically lead sampler Darian Coulter,

supported the project greatly. The CreekWatch organization provided both the lab and technical trainings in its use.



**Darian Coulter (Red Deer River Watershed Alliance) conducting one of seven water quality test parameters using the CreekWatch citizen science lab**



### TREE & SHRUB SALES!

**2024 Resident Environmental Sustainability Program**

Lacombe County's 2024 program has potted trees on sale for \$11.82/tree or shrub!!

**BUY YOUR TREES STARTING MAY 21, 2024 (while supplies last)**

Trees and shrubs currently in stock are:

**Okanse Poplar | Golden Willow | Laurel Leaf Willow**

**PROOF OF RESIDENCY is required, as this program is only for Lacombe County residents.**

First come, first serve (no holds) | Maximum 3 plants/household  
Pick up at County Administration Building (8:30am and 4:30pm)

**Questions? Email [jberry@lacombecounty.com](mailto:jberry@lacombecounty.com) or call 403-782-8959.**

## FOR RENT

### Pasture Sprayers

Lacombe County Agriculture Services Has Pasture Sprayers for County Residents to Rent



**RENTAL RATE - \$50.00/DAY**  
**DEPOSIT - \$200.00** (deposit refundable when sprayer returned in good condition)

- ❖ Pull type - 400 gallon water capacity, 20 gallon/acre coverage
- ❖ Designed for spraying range and pasture in rough terrain
- ❖ Has additional hand gun system and fence line spraying nozzle
- ❖ Simple to operate
- ❖ Can be pulled by trucks OR tractors



# OPERATIONS



Dear Members,

Lacombe Regional Waste Services Commission owns and operates four Transfer Stations throughout Lacombe County as well as the Prentiss Landfill. LRWSC strives to provide excellent customer service to all residents that utilize our facilities, while maintaining cost effective, efficient waste management operations.

Our Transfer Station facilities are designed to accept many different types of residential waste that are small in volume and weight (<500kg) strictly for the convenience of our residents to reduce travelling to the Prentiss Landfill for small loads. If you are unsure if your load will be accepted at a Transfer Station, or think it may be too large, users are encouraged to go to the Prentiss Landfill Facility to avoid refusal at the Transfer Station. We do require that in order to serve the residents with smaller loads, that large loads (>500kg, or larger than a pickup truck box) be taken to the Prentiss Landfill facility.

The attendant at each of our Transfer Stations is following rules set out by LRWSC to abide by our small load policy to maintain efficient operations. The attendants are also instructed to promote and educate our residents in waste separation at the Transfer Stations to help facilitate diversion of unnecessary materials in our Landfill.

The rules that are set out at each of our Transfer Stations and must be followed are as such:

- Acceptable loads must be able to fit in a pickup truck box and weigh less than 500kg (Trailers are fine if the pickup truck box is empty, but the trailer must be equal to the pickup truck box size, no larger) in the attendant's estimation.
- All residential loads must check in with the Site Attendant prior to unloading waste.
- Respectful communication from both parties is expected. Disrespectful behavior will result in refusal to utilize our facilities.
- Loads must be sorted to the satisfaction of the Site Attendant. LRWSC expects that if material is placed in the incorrect area by a resident, the resident will attempt to correct the situation and place the item in the correct area as directed by the Site Attendant.
- A maximum of two loads per day per household is allowed so that there is room for everyone to use the facilities. We do not have the equipment available at the Transfer Station Level to maintain the larger volumes. These restrictions apply to Rubble, Compactor, and Metal waste, but the attendant may apply these restrictions to any other waste streams or recycling based on current available room.
- All silage wrap loads brought by front end load tractors to our sites, must call ahead to ensure there is room that day for disposal.
- It is NOT the Site Attendant's job to clean up any mess left by the resident while unloading waste. Refusing to clean up, or unloading waste irresponsibly can result in the loss of utilization of our facilities.

## Construction complete on Bridge 1454

Bridge construction on Township Road 411A, over the Medicine River near the Leedale Colony on the west side of Lacombe County (Division 7) is now complete and has opened ahead of schedule.

The structure - a bridge from the 1950s - was removed. In its place, a new, wider bridge was constructed, resulting in enhancements to the road approach and the removal of weight restrictions.



(Above: Leedale Bridge after construction)

(Right: Pre-construction bridge circa 1950s)



## CONSTRUCTION SEASON REMINDER

Please drive carefully and obey ALL signs and speed limits during construction. If you have questions or concerns regarding any project, please contact the Operations department at 403-782-8379.

All notifications and maps can be found at [lacombecounty.com](http://lacombecounty.com) under Construction Notifications (in Quick Links)

## ALERTS Construction Notices

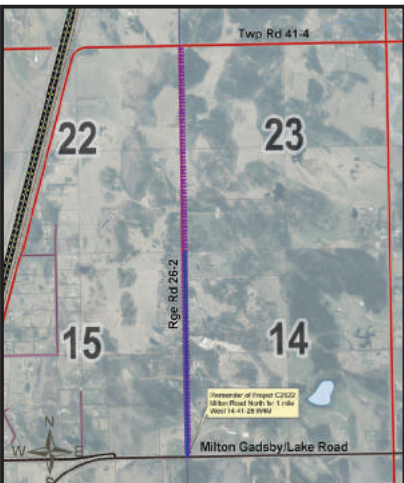
### CONSTRUCTION NOTICE | Road Construction on TWP Rd 41-0 and Range Rd 26.2

Lacombe County is notifying residents of two upcoming road construction projects starting on May 1, 2024

Township Road 41-0 (west on Township Road 41-0 from Range Road 1-1 to Range Road 1-2 for one mile)

Range Road 26-2 (north from Milton Road for one mile)

Construction for both projects will start Wednesday, May 1, and take +/- 3 weeks to complete (weather permitting).





# AGRICULTURE

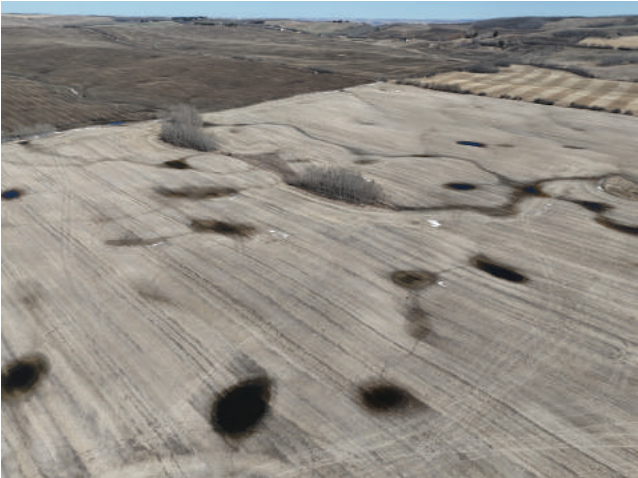
## Economics of Farming Around Wetlands

By Jenna Dell, ALUS Field Assistant

Wetlands play an important role in sustaining healthy watersheds, by protecting water quality, improving resiliency to flood and drought, and sustaining biodiversity. However, it is estimated that Alberta has lost between 60 to 70% of wetlands in our settled areas.

So to conserve, restore, protect and manage our wetlands, the Alberta Wetland Policy was implemented. Despite the implementation of the policy, there are still many pressures on our wetlands that may lead to the further loss or degradation of these invaluable areas. Agriculture is one of those pressures.

Finding wetlands in cropland in Central Alberta is inevitable. Whether they are large permanent wetlands, or ephemeral potholes, they seem to always be in the wrong place at the wrong time. Trying to farm through these areas when it's wet can be challenging to say the least. Trying to farm through them can leave you stuck, and the area full of ruts. The alternative - farming around these areas - presents a different challenge of overlapping inputs, lower efficiency from having to circle the area and losing acres that could potentially be a productive crop. Historically, this has led to a variety of solutions like ditching, pumping or filling these areas in the hopes of getting the water off the land in time for seeding. While some quick back-of-the-napkin math might indicate that it's worth it to do these things, some recent research may be



showing otherwise.

In a 2021 paper Does drainage pay? Quantifying agricultural profitability associated with wetland drainage practices and canola production in Alberta by Clare.S., et. al. Researchers found that areas that were drained and then seeded had a highly variable profit. The highest profit seen, was, with one producer who saw a profit rate of \$76/ac. On the other hand, on the low end there was a producer who saw a financial loss on his drained basins, of \$145/ac.

On average, profit on these drained wetland areas was \$55/ac, which is quite a bit less when compared to the \$200/ac of profit that was seen on non-wetland

areas.

The challenges of operational efficiency were also noted, and it was seen that even with drainage, many of the wetlands were still too wet to seed in the spring, causing producers to have to circle around them anyways. While more research is still needed to understand the full financial impacts of draining or consolidating wetlands, this paper shows us that it may not always produce a financial benefit, and in some cases may in fact lead to financial losses.

ALUS recognizes the value of these wetland areas and the ecosystem services they provide, so as part of our ALUS program in Lacombe County there is funding available up to \$100 per acre per year to producers who are interested in farming around wetlands, as well as providing up to 50% of costs for seed, to re-establish riparian vegetation in those wetland areas that are typically cropped.

For more information on Wetlands, check out Ephemeral (Temporary) Wetlands matter – and preserving them pays in many ways! in the April edition of the County News.

If you would like to learn more about the ALUS program, please contact Ken Lewis, ALUS Coordinator at 403-505-9038 or [kewis@rdcounty.ca](mailto:kewis@rdcounty.ca) or myself, Jenna Dell, ALUS Field Assistant at 403-392-4616 or [jdell@rdcounty.ca](mailto:jdell@rdcounty.ca).



**ALUS**  
LACOMBE

**Join the ALUS Lacombe Partnership Advisory Committee**

The ALUS Lacombe Partnership Advisory Committee or "PAC" is looking for farmers and ranchers in Lacombe County to join our team.

Help guide ALUS in our community and support our agriculture industry in producing an invaluable product: Ecosystem Services!

For more information, contact the ALUS Lacombe Coordinator:  
Ken Lewis  
403-505-9038  
[kewis@rdcounty.ca](mailto:kewis@rdcounty.ca)

Scan the QR Code to apply!

Or use this link:  
<https://forms.office.com/r/8VaDkaeHAT>

ALUS Lacombe PAC Member Application



## Lacombe & District Beef 4-H sale

You are invited to our 2024 Show and Sale!



Female Show: May 26th at 9:30 AM


Steer Show: May 27th at 9:00 AM

Awards Presentation: May 26th & 27th at 4:00 PM

4-H Appreciation Supper: May 27th at 5:00 PM


**Sale Monday May 27th at 6:30 PM**  
At the Central Alberta Agriculture Pavilion, Lacombe, Alberta


Sale Conducted by Innisfail Auction Services



Follow us online TODAY for current Lacombe County information

 LacombeCounty

 @LacombeCounty

 [www.lacombecounty.com](http://www.lacombecounty.com)



# AGRICULTURE

## Addressing Skunk Issues in Lacombe County: A Community Approach

In Lacombe County, the issue of skunks on private properties is not directly managed by the local government. Instead, residents are encouraged to adopt proactive measures to prevent and manage skunk problems themselves. The AG(09) Skunk Trap Requests Policy provides County residents with skunk traps at no cost, requiring only a \$75 deposit, refundable upon the return of the trap in clean, undamaged condition within two weeks.

Individual and community efforts in managing wildlife conflicts is key. One such organization, the Medicine River Wildlife Centre, has been recently working to shift the focus from reactive measures—such as trapping and relocating skunks—to more sustainable, educational approaches aimed at reducing conflicts and fostering coexistence.

**Preventive Measures** Prevention is key to managing skunk populations effectively. Residents are advised to:

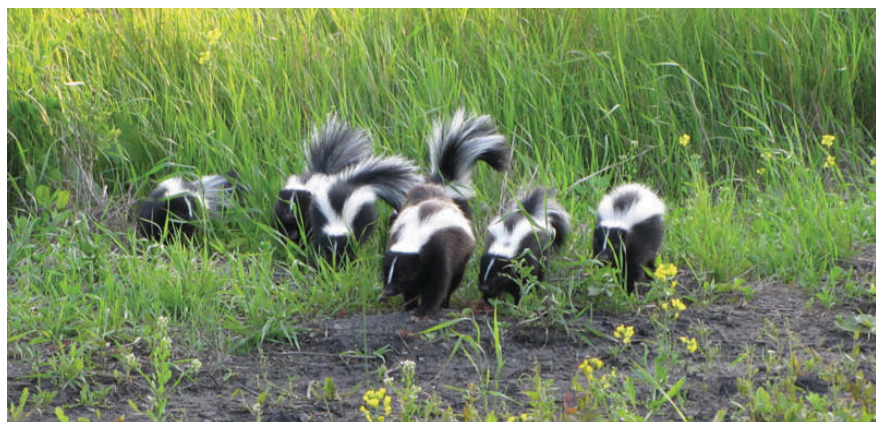
1. **Remove Shelter:** Clear areas such as brush piles, stacked lumber, and debris that shelter skunks. Ensure that spaces under sheds, porches, decks, and crawlspaces are securely closed off.
2. **Remove Food Sources:** Use garbage and recycling containers with tight-fitting lids and keep pet food indoors or remove dishes immediately after feeding. These steps help make your property less attractive to skunks seeking food.

**Dealing with Existing Skunk Issues** If skunks have already settled on your property, consider placing mothballs in the affected areas, as their smell repels skunks. However, comprehensive eviction strategies have proven more effective. These strategies include education, proper waste management, and habitat modification to deter skunks without harming them.

**Benefits of Coexistence** Skunks play a beneficial role in the ecosystem by controlling insect and rodent populations. Understanding their natural habits and benefits can reduce the fear and misconceptions surrounding skunks.

**Local Resources and Support** Residents facing skunk issues can access skunk traps through the County's policy or seek advice from local pest control companies. Furthermore, organizations like the Medicine River Wildlife Centre offer educational resources and support to help residents implement effective skunk management strategies.

While Lacombe County provides the tools needed to manage skunk problems, implementing these measures largely falls on residents. By focusing on education and preventive strategies, the community can effectively manage skunk populations, reduce conflicts, and promote a balanced coexistence with our wildlife neighbours



## Water Conservation Conversation!

Many parts of Alberta are preparing for a drought after several dry years. Lacombe County residents, farmers and businesses are encouraged to find ways of conserving water. The **Water Conservation Conversation** provides simple tips and resources for saving water. We will have these posted on our website, too, at [www.lacombecounty.com/drought](http://www.lacombecounty.com/drought).

### TIPS FOR ALL RESIDENTS: DROUGHT RESISTANT PLANTS AND TREES.

One effective approach in urban landscaping is the planting of drought-resistant trees and plants, or engaging in xeriscaping. **Xeriscaping is a way of designing landscapes so they use as little water as possible.** This not only reduces our dependence on water but also contributes positively to our environment by conserving this precious resource.

#### Here's how Xeriscaping works:

**Choosing the Right Plants:** Instead of using plants that need a lot of water, xeriscaping focuses on plants that are naturally drought-resistant. These plants don't need much water to thrive. Think of cacti, succulents, and some grasses and shrubs that you see growing in dry areas—they all do really well with little water.

**Planning the Space:** In xeriscaping, the way you arrange the plants and the landscape features is important. The goal is to reduce water usage but also to keep the area looking good. You might see different areas in a xeriscape yard grouped by how much water they need—so plants that need a bit more water are together and can be watered at the same time.

**Improving the Soil:** The soil is improved to help hold onto water better. This might involve adding materials that can keep the soil moist for longer without needing frequent watering.

**Mulching:** This is about covering the ground around plants with materials like wood chips or gravel. Mulch helps



keep the soil cool and moist, and it reduces water evaporation. So, the plants need less watering, which saves water.

Xeriscaping is really about working with nature to create beautiful gardens and yards without using a lot of water.

### TIPS FOR FARMERS

It's crucial for farmers to engage in sustainable farming practices consistently, not just during drought conditions. By implementing methods such as the use of cover crops, no-till cultivation, and maintaining organic soil matter, farmers can significantly improve water retention and reduce soil erosion.

Particularly, the practice of no-till farming and the strategic use of stubble can trap more snow during the winter months, leading to better water absorption.

Planting trees and avoiding excessive tree brushing are vital too, as they prevent wind erosion that can dry out the landscape. Shelterbelts, for instance, are instrumental in accumulating more snow over croplands, which directly benefits water conservation.

We encourage all residents and our dedicated farmers to consider these sustainable practices not only as a means to conserve water but also to foster a healthier, more resilient environment for generations to come.

Let's work together to make a lasting impact through thoughtful conservation and farming practices.



# What you "weed" to know about weeds in Lacombe County

Lacombe County's Weed Inspection Program has begun. Our goal is to protect productive, valuable and sensitive lands within Lacombe County from prohibited noxious and noxious weeds, regulated under the *Alberta Weed Control Act* that Lacombe County enforces.

- Prohibited noxious and noxious weeds will:
- Reduce the habitat available for native plant species, which threatens species of insect, plant, fish and animal that depend on native plants.
  - Reduce property values for residents and agricultural producers.
  - Reduce production from agriculture and other rural industries.
  - Increase land management expenses for counties, businesses and property owners.

For further information in which apply to all county landowners, check out the *Alberta Weed Control Act*: <https://open.alberta.ca/publications/w05p1>  
*Alberta Weed Control Regulations* [https://open.alberta.ca/publications/2010\\_019](https://open.alberta.ca/publications/2010_019)

**Who is in my field? (Pictured below)**  
Alexis de Boon and Nyall Falconer (pictured below) are Lacombe County's NEW Weed Inspectors. They will be inspecting: County, private, and public lands for prohibited noxious and noxious weeds.

**Commonly Asked Questions:**  
**Can a weed inspector come onto my property without my permission?**  
Yes, under the provincial *Weed Control Act*, County Weed Inspectors have the appointed authority to enter any private property to monitor for noxious and prohibited noxious weeds and enforce compliance with the Act. They do not need the homeowner's permission

to do so. They are, however, restricted to only outdoor lands and business hours. Under the *Weed Control Act*, a person shall not willfully obstruct or delay an inspector in the exercise of their duties.

**How does a weed inspector know which properties to inspect?**

Weed inspectors patrol within Lacombe County's jurisdiction. They may decide to inspect a property based on a number of factors, including:

- A random inspection,
- A visual sighting from the roadway
- A reported sighting
- A known history of an infestation in the area.

**What is a Prohibited Noxious Weed vs. Noxious Weed?**

Prohibited Noxious weeds need to be 100% destroyed each year. They are classified as detrimental weeds but are not yet widespread in the province, making total eradication possible. Noxious weeds are widely spread across Alberta, which may be difficult to eradicate, but will alternatively be managed every year to stop the spread.

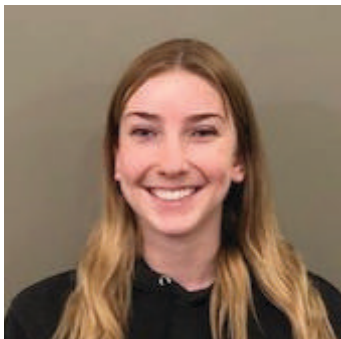
**More information**

We are here to help! Ask us about plant identification, weed control options, or private herbicide applicators for hire. If you have any questions or concerns, contact Lacombe County's Agriculture Department at 403-782-8959.

We have a list of noxious and prohibited weeds on our website at: <https://www.lacombecounty.com/en/business-and-development/weeds.aspx>



Jalene Makus



Alexis de Boon



Nyall Falconer

You may see these County staff conducting weed and pest inspections this season. If you have any questions, please contact the office at 403-782-8959.

# Weed season is around the corner: *Early detection is KEY!*

Most weeds start appearing in mid-May (usually) and are easiest to control when they first "pop up". If you see a troublesome weed, you should take action early, as leaving them can have significant negative impacts. The longer you leave weeds, then more difficult they are to control or eradicate from your property.

The *Weed Control Act of Alberta* directs that all landowners are responsible for keeping weeds under control. This also includes Lacombe County. The County is responsible for controlling weeds on properties under County control, and directing private landowners/tenants to do so on their properties as well.

**Weed Inspections**

The Agriculture team believes that early detection and rapid response is the most effective method of managing invasive plants.

The employment of seasonal weed inspectors and the use of new technology assist Agriculture staff in maintaining an effective, long term weed control program.

**How We Can Help**

Agriculture staff are available to work with residents to prevent and resolve weed control issues. They can assist by identifying plant species and presenting solutions based on resident and County experience, along with research results using various weed control methods.

Call Lacombe County at 403.782-8959 if:

- You have concerns about weeds on a property.
- You would like a consultation on weeds on your property.
- You want to drop off a weed sample for identification. (Please call prior to coming in, if you require immediate identification.)
- You want a list of local herbicide or pest control applicators in your area.

**More information**

We have a list of noxious and prohibited weeds on our website at: <https://www.lacombecounty.com/en/business-and-development/weeds.aspx>

If you have any questions or concerns, please contact Lacombe County at 403-782-8959.

WHY WE DO WHAT WE DO?

**PROSTATE CANCER**  
CAN PROGRESS  
WITH VERY LITTLE SYMPTOMS  
AND IS OFTEN  
FATAL WHEN  
LEFT UNDETECTED

**MOST COMMON CANCER** AMONG MEN

**450** IN ALBERTA  
DIRECT DEATHS  
LAST YEAR

**3RD** LEADING CAUSE OF DEATH

**1 IN 6 MEN** WILL DEVELOP PROSTATE CANCER IN THEIR LIFETIME

**1/8** NATIONAL

**100% TREATABLE** IF CAUGHT NEARLY





## PROSTATE CANCER OFTEN HAS NO WARNING SIGNS EARLY DETECTION SAVES LIVES



# GET CHECKED.

**THE VISIT IS FAST, FREE AND NO APPOINTMENT IS NECESSARY.**

The MAN VAN® will be on-site offering free baseline PSA (Prostate Specific Antigen) blood testing for men ages 50-70, which can help with the early detection of prostate cancer.

Additionally, all men over 18 will receive blood sugar, blood pressure, mental wellness check and waist circumference measurements.

**PLACE:** LACOMBE COUNTY OFFICE

**ADDRESS:** Hwy 12 & Range Rd 27-4 (west of Lacombe)

**DATE:** June 20, 2024

**TIME:** 11:00 AM to 3:00 PM



THE MAN VAN IS  
PROUDLY SPONSORED BY:

For more information about the MAN VAN® Program, visit [getchecked.ca](http://getchecked.ca)

## Catch the MAN VAN® at the Lacombe County Office: A Lifesaving Opportunity for Men's Health

As we embark on a new year, the importance of prioritizing health and well-being takes centre stage. It's the perfect time to shed light on a crucial aspect of men's health – the prostate.

In Alberta, 1 in 6 men will be diagnosed with prostate cancer in their lifetime, which often progresses with little to no warning signs. Early detection is the key to effectively treating this disease.

Did you know that a simple blood test can provide valuable insights into your prostate health? If you or someone you care about has a prostate, this message is for you.

The MAN VAN®, operated by the Prostate Cancer Centre, is Canada's first mobile men's clinic offering free PSA (prostate-specific antigen) blood testing, which can help with early prostate cancer detection. And we're thrilled to announce that we're rolling to the Lacombe County Administration Building in June 2024!

**Date: Thursday, June 20, 2024**

**Time: 11 AM – 3 PM**

If you or a man in your life is between 50-70\*, take control of your health and make it a point to stop by the MAN VAN® on June 20, 2024, to GET CHECKED. This invaluable opportunity provides a fast, free PSA blood test, and men over 18 can also receive additional health measurements including blood pressure, blood sugar, waist circumference and mental wellness checks – all without the need for an appointment.

Just 10 – 15 minutes can save your life.

**Join us at the Lacombe County Office (Administration Building),** located at the intersection of Highway 12 and Range Road 27-4 (west of Lacombe).

**Remember, it's a blood test, not a glove test.**

For more information about the MAN VAN® Program, testing guidelines, visit [www.getchecked.ca](http://www.getchecked.ca).

## Summer plans at Ellis Nature Centre

Ellis Nature Centre (formerly Ellis Bird Farm) is excited to welcome folks back for the 2024 season! Amongst various kids summer camps, art workshops, bird presentations, and gardening events, we're offering something for everyone this season. We've also launched a new Friend of Ellis program - for a one-time donation of \$20 you can pledge a lifetime of support to ENC and receive exclusive benefits, such as special access to our site, discounts on facility rentals & select books, and the ability to purchase a Friend of Ellis hat. For more details & to sign up, head to our website [www.ellisnaturecentre.ca](http://www.ellisnaturecentre.ca)



**For those who want to join us for our events, here is what's upcoming in May & June:**

- **May 20, 8am-6pm:** Opening Day. We'll have kids activities, an art workshop, bee box demos, a bird walk at 9am, a Great Horned Owl info table, and Cilantro & Chive pop up!
- **May 25, 9am-5pm:** Berry & Shrub Planting Workshop with AWES. Join us to increase food sources and habitat on our site through shrub planting.
- **May 26 & June 9, 1:30-3pm:** Citizen Science Butterfly Training. Come learn how to complete butterfly counts at ENC to help Dr. Lewis at Burman University with his butterfly research.
- **June 1, 11am or 1pm:** Hummingbird Planter. Make your own planter full of flowers to attract hummingbirds & other native pollinators.
- **June 2, 1-4pm:** Medicine Wheel Quilled Earrings. Alberta Plains Cree knowledge keeper & artisan Sharon L'Hirondelle-Whiskeyjack will be sharing her teachings of porcupines & the medicine wheel as participants make their own earrings.
- **June 8, 1-3pm:** Erin Boake Lino Cut Bird Print. Anyone aged 8+ is welcome to come learn how to cut lino to create their own bird print.
- **June 15, 1-2pm:** Gardening 101 with Sharon Wiebe. Come learn about how to reinvigorate soil, provide nutrients for microorganisms, the perks of raised beds, and more.
- **June 23, 1-2pm:** Pollinator Walk & Talk with Charity Briere. Come learn about native pollinators and search for them on the ENC site.
- **June 29, 7:30-9am (Birding) & 10-11am (eBird):** Spring Birding & eBird training with Gavin McKinnon. Complete an early morning bird walk and/or come learn how to use the eBird app.

For more details and to register for our events, head to our website [www.ellisnaturecentre.ca](http://www.ellisnaturecentre.ca) or call us at 403-885-4477.

**Let's talk business**

# WE WANT TO HEAR FROM YOU

**Calling all Lacombe County Businesses!!**

Lacombe County is currently running a Business Retention & Expansion Study!

Be a part of the Economic Growth of our County!

For more information visit our website [www.LacombeCounty.com/buildingcapacity](http://www.LacombeCounty.com/buildingcapacity)

**SCAN ME TO TAKE SURVEY NOW!**

LACOMBE COUNTY



# SUBDIVISION & DEVELOPMENT ACTIVITY

April 1, 2024 to April 30, 2024

Development Applications Received

| No. | File No. | Applicant                                  | Legal Description  | Proposed Development   | Decision<br><i>(otherwise pending)</i> |
|-----|----------|--|--|--|--|
| 1   | 28/24    | True-Line Contracting Ltd.                 | Lot 1 Block1 Plan 222 0842<br>(NW 15-38-25-W4M)                  | Single Family Residence  | Approved                               |
| 2   | 29/24    | Jared Tangjerd<br>(Gull Lake Baptist Camp) | Lot 6A Block 5 Plan 832 2486<br>(N ½ 2-41-28-W4M)                | Gazebo   | Approved                               |
| 3   | 30/24    | Dexter Hucal                               | NW 33-41-22-W4M  | Single Family Residence<br><i>Second Dwelling</i>                                | Approved                               |
| 4   | 31/24    | Rick and Lori Sparrow                      | NW 26-40-3-W5M   | Grizzly Energy<br><i>Off-site Trucking Company<br/>Renewal, Expansion</i>        | Approved                               |
| 5   | 32/24    | Sorento Custom Homes Ltd.                  | NE 10-41-27-W4M  | Single Family Residence<br><i>Replacement Dwelling</i>                           | Approved                               |
| 6   | 33/24    | Sorento Custom Homes Ltd.                  | Pt. NE 5-41-26-W4M   | Single Family Residence<br><i>Replacement Dwelling</i>                           | Approved                               |
| 7   | 34/24    | Réal and Rachelle Bouffard                 | Lot 2 Block 1 Plan 062 4150<br>(Pt. NW 19-39-27-W4M)             | Real Enterprises Ltd.<br><i>Outdoor Storage Business<br/>Renewal, No Changes</i> | Approved                               |
| 8   | 35/24    | Justine Henry                              | Lot 1 Block 1 Plan 942 0476<br>(Pt. NW 5-41-02-W5M)              | Single Family Residence<br>w/Veranda, Covered Deck &<br>Attached Garage          | Approved                               |
| 9   | 36/24    | Steven & Cindy Siebenga                    | Lot 2 Block 1 Plan 952 3737<br>(Pt. NE 35-41-26-W4M)             | HWS Mechanical<br><i>Renewal, No Changes</i>                                     |  |
| 10  | 37/24    | Lacombe Corn Maze Inc.                     | Lot 1 Block 1 Plan 142 2388<br>(Pt. SE 21-40-27-W4M)             | Exit Barn and 3 ticket booths  | Approved                               |
| 11  | 38/24    | Chris Scott                                | Lots 1-10 Block 103 Plan 7159AI<br>(Hamlet of Mirror)            | Campground, Minor<br><i>Drive-in Theatre and<br/>Accessory Building</i>          |  |
| 12  | 39/24    | Dynamic Modular Homes                      | Unit 154 Condo Plan 232 0356<br>(DeGraff's RV Resort, Gull Lake) | Modular Home   | Approved                               |
| 13  | 40/24    | Five Star Permits                          | Lots 1&2 Block 34 Plan 7159AI<br>(Hamlet of Mirror)              | Sign<br><i>ATB Mirror</i>  | Approved                               |
| 14  | 41/24    | Jack & Shirley Neilsen                     | SW 219-39-23-W4M   | Addition   | Approved                               |
| 15  | 42/24    | Barton & Amanda Tenhove                    | NW 32-41-27-W4M  | Phantom Garbage Services<br><i>Renewal, Expansion</i>                            |  |
| 16  | 43/24    | Darren Unrau                               | Unit 145 Condo Plan 232 0356<br>(Degraff's RV Resort, Gull Lake) | Modular Home<br>w/Covered Deck and Two Sheds                                     | Approved                               |

Do you have  
questions about  
subdivision or  
development  
activity?

Contact Us:

Lacombe County  
Planning Services

(403) 782-8389

planning@  
lacombecounty.com

Dale Freitag  
Director of  
Planning Services

Cajun Paradis  
Senior Planner

Natasha Wright  
Planner / Development  
Officer

Nicklas Baran  
Planner / Development  
Officer

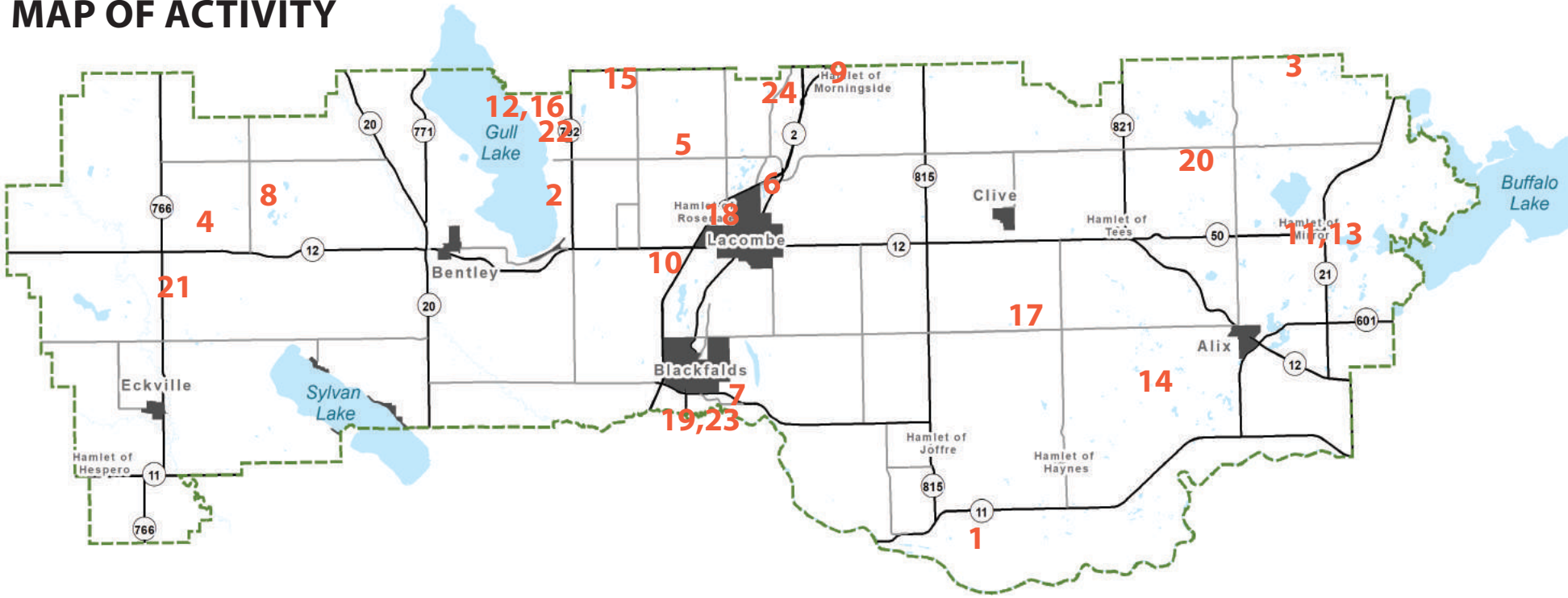
Kerrie Taylor  
Economic Development  
Officer

Allison Noonan  
Planning Services  
Administrative Assistant

Daniella Gonzalez  
Planning Services  
Receptionist



MAP OF ACTIVITY



|    |       |                          |  |   |          |
|----|-------|--------------------------|--|---|----------|
| 17 | 44/24 | Douglas & April Voisey   | Lot 1 Block 1 Plan 102 4509<br>SW 5-40-24-W4M                | Home Based Business, Major<br><i>Ace Powersports</i>  |          |
| 18 | 45/24 | Paul White               | Lot 3 Block 2 Plan 151Z<br>(Rosedale Valley)                 | Single Family Residence<br><i>Replacement Dwelling<br/>w/Attached Garage</i>                  | Approved |
| 19 | 46/24 | Markus & Olga Hoorman    | Lot 4 Block 1 Plan 192 1146<br>(Burbank Heights Subdivision) | Home Based Business, Minor<br><i>Online Lumber Sales</i>                                      | Approved |
| 20 | 47/24 | Trevor & Ingrid Benson   | NW 10-41-23-W4M  | Single Family Residence   |          |
| 21 | 48/24 | Phillip & Shannon Rodnay | NW 10-40-03-W5M  | Single Family Residence<br><i>Replacement Dwelling w/Covered<br/>Deck and Attached Garage</i> |          |
| 22 | 49/24 | Tony Kamlah              | NW 13-41-28-W4M  | Single Family Residence<br><i>Second Dwelling</i>   |          |

Subdivision Applications Received

| No. | File No. | Applicant                                   | Legal Description   | Proposed Subdivision | Decision<br><i>(otherwise pending)</i> |
|-----|----------|---|---|----------------------|--|
| 23  | S-013-24 | Stuart Purvis & Ekaterina Bylinka           | Lot 7 Plan 922 1632<br>(Burbank Subdivision)                            | Residential          | Approved                               |
| 24  | S-014-24 | Matthew & Petronella Kraay<br>Lynne Gendron | Lot 1 Plan 952 4364<br>(Pt. NE 28-41-26-W4M) &<br>(Pt. SE 33-41-26-W4M) | Boundary Adjustment  |  |



# The Sargent Community Society completes its final act of legacy through generous donations

The closure of the Sargent Community Centre in 2023 marked the end of an era in Lacombe County. Established in the early 1900s, the Sargent Centre served as a pivotal community center, encapsulating the local history. From its origins as a one-room schoolhouse named after a pioneer family through its years as a social hub for dances, card parties, and community gatherings, the Sargent Community Centre has been at the heart of local life.

The decision to close the hall was not made lightly. It came after numerous discussions about the practicalities of maintaining such a property in a changing world, where mobility and larger community centers drew attendance away. Despite the bittersweet end, the closure paved the way for a profound act of community spirit. The Sargent Community Society opted to auction off the hall and its contents, dedicating the proceeds to further community efforts across the region.

## A GENEROUS DISTRIBUTION

The auction's proceeds were thoughtfully allocated to several local organizations, ensuring the legacy of the Sargent Community would live on through the support of educational and community projects. These beneficiaries included:

- **Wolf Creek School Board:** Scholarships for agricultural studies and apprenticeships were established to support students from Alix Mac School and Lacombe Composite High School.
- **Health Services:** The Lacombe Hospital Palliative Care Society and the Lacombe Hospital Health Trust Fund received donations to enhance healthcare services.
- **Community Halls:** The Alix, Tees, Clive, and Haynes community halls were also recipients, each playing a crucial role in their respective areas.

Among the grateful recipients was the Haynes Community Society. They expressed their heartfelt thanks for the donation, which arrived with a touching letter that not only conveyed generosity but also a deep connection to the community's history and shared values.

"With the closure of the Sargent Community Centre,

the Haynes Society would like to welcome all community members to join us in all the activities that take place within our new hall," they wrote on their Facebook page.

The transition of the Sargent Community's legacy to new hands represents a conscious effort to preserve and enhance community bonds. As articulated by the Haynes Community Society, this contribution has provided financial support and symbolized a torch being passed. It encourages community members to engage actively and continue the traditions of camaraderie and local pride that the Sargent Community Centre once embodied.

"The people of Sargent Community want to thank the pioneers and residents of the Sargent Community, and we want to honour them with these donations as a legacy of their community spirit and hard work," wrote Marie Payne, who was part of the Sargent Community Centre committee.

## HONOURING THE PAST, BUILDING THE FUTURE

With the establishment of the Sargent School District commemorative sign and the dispersal of funds, the community has found meaningful ways to honour its history. The gratitude of the Sargent Community towards its pioneers and longtime residents reflects a deep appreciation for their efforts in building a cohesive, vibrant community spirit.

It is a legacy of not just bricks and mortar, but of heart and spirit, continuously fostering a sense of belonging and mutual support across generations in Lacombe County.

## SARGENT COMMUNITY CENTRE LETTER

The former Sargent Community Centre was established as a one-room school in 1900 or 1901 (conflicting stories in history books). As in many rural schools, the school was named after an early pioneer family living in the area at the time. As the 1st and 2nd World Wars occurred, the Sargent Community residents fluctuated as our valiant servicemen left and returned to this area.

After WWII, the returning veterans purchased a lot of the land. This school served the community as a school, church and community centre until its official

closing as a rural school when centralization was established, and it was closed as a school in 1956.

The school was purchased from the municipality as a community centre where cherished memories of social events occurred. Since it was a rural hub, it was a "rockin' place for dances, card parties, picnics, bingos, Christmas concerts, pancake breakfasts and other fun times as the years slipped by. The Sargent Ladies Aid groups held monthly meetings, quilting bees, catering for weddings, Mother's Day Tea and other events, until their numbers dwindled and they disbanded in 2015.

This school and its property were recently sold because the same small number of people were left to maintain the school and yard. It was decided through many anguishing meetings to finally close its doors. Some of these reasons are (not inclusive) everyone is more mobile and families could attend more events in larger centres, larger farms with fewer people, and the aging rural population left the community getting smaller and smaller.

Several avenues were sought to sell the building and property. The final solution was to sell it through an online auction. The Sargent Community thanks you for your participation in any of the events that we held. Memories are all that is left of this rural landmark. We thank former generations for their dedication to maintaining a part of Alberta's rural heritage.



(Left) Sargent school in the 1950s, (Middle) Sargent Hall in the 1960s with its new porch. (Right) Marie Payne (Sargent), Linda Pack (Wolf Creek Schools) and Eileen Eggenschwiler Sargent during the donation of funds for Sargent Community Scholarship Fund. (Top right) the Commemorative Plaque for the Sargent School







# BUSINESS SPOTLIGHT

## MAY BUSINESS SPOTLIGHT | Hands off Zoom Park

Name 2 people who have turned their love for dogs and the great outdoors into a thriving venture. If the names Lynda and Daryl Hand come to mind, you are right. The Hands Off Zoom Park is a haven for dogs and their families nestled between Lacombe and Blackfalds.

The park, sprawling across nearly two acres of picturesque countryside, offers a safe and serene environment for dogs to frolic off-leash while their owners soak in the tranquillity. "We wanted to provide a safe place for owners and their dogs to go play," Lynda explains. "Studies show that off-leash areas are good for dogs to de-stress from urban living."

Their journey began when Daryl began transforming their land, inspired by a joke about mowing pastures into park-like spaces after their children were no longer in 4H. Lynda's extensive experience in dog sports further fueled the idea. "As we heard about other

people renting out their yards or creating off-leash parks, it was a natural progression for us," she says.

Since opening its gates on December 8, 2023, the park has seen a steady stream of visitors drawn by its unique offerings and pristine surroundings. The fencing, meticulously crafted by Daryl with 2" X 4" welded 12-gauge wire, ensures the safety of all canine guests. Meanwhile, a mini agility area, complete with ramps, tunnels, jumps, and even a vintage 1952 Chevy for photo ops, provides endless entertainment.

Reflecting on their growth, Lynda shares, "We started with a concept in spring 2023 and worked tirelessly to bring it to life. Despite challenges like finding suitable booking software, the support from the community has been overwhelming." Plans for future expansion include additional off-leash areas and a self-directed agility section.

Their decision to set up shop in Lacombe County was a no-brainer, given its positive reception and proximity to the TransCanada Trail. "We have always maintained a positive relationship with the County, and I think they appreciated the idea of a recreational area so close to the trail," Lynda notes. Working with the county team is easy; the process is straightforward, and the county's unwavering support is valued.

The park's biggest success? "The rapid growth of visitors who learned about us through word of mouth," Lynda beams. However, managing the park while juggling their existing jobs remains a challenge. "Finding that balance is crucial, but we're grateful for the community's patience," she acknowledges.

Hands Off Zoom Park stands as a testament to the Hand Family's dedication to creating a space where

dogs and their owners can forge lasting memories amidst the beauty of the countryside. As they continue to grow and evolve, one thing remains certain – their commitment to providing a sanctuary where trails wag and hearts rejoice.

### FOLLOW HANDS OFF ZOOM PARK

- Website: <https://hands-off-zoom-park.square.site/>
- Facebook: [Hands Off Zoom Park](#)
- Phone: 403-318-7901
- Email: [handsoffzoompark@gmail.com](mailto:handsoffzoompark@gmail.com)



**RCMP GRC**  
ROYAL CANADIAN MOUNTED POLICE • GENDARMERIE ROYALE DU CANADA

**THE ALBERTA RCMP APP**

A simplified online experience to:

- Report crime
- Contact a detachment
- Learn about crime rates in your area
- And more!

Stay connected by downloading the free app today.



Royal Canadian Mounted Police / Gendarmes royales du Canada

**LACOMBE COUNTY**

## Paid Parking Program

**REMINDER:** the Paid Parking Program is in effect from May - September at the following locations



### Sandy Point Beach

\$3/hour  
OR  
\$15/day for parking at Sandy Point Beach.



### Boat Launches

\$10/day to launch only  
\$20/day launch and park  
Applies to:  
Sandy Point Boat Launch  
Sunbreaker Cove Boat Launch



### Annual Pass

- \$120/year Sandy Point Beach Parking
- \$160/year Boat Launch & Parking
- \$80/year Boat Launch ONLY\*

(\*doesn't include parking)

Questions? Prepay? Visit [www.lacombecounty.com/paidparking](http://www.lacombecounty.com/paidparking)



# ECONOMIC DEVELOPMENT

## LACOMBE COUNTY SPOT *light*

### HORSE CONNECT

In the heart of Lacombe County, nestled within the serene countryside, lies an innovative venture that promises not just business but profound transformation. Meet Mary Jean Mulder, the visionary behind Horse Connect, an Equine Assisted Learning Program that's redefining mental wellness and community engagement.

"Understanding oneself is a journey, and horses are remarkable guides," says Mary Jean Mulder, the owner and operator of Horse Connect, as she shares her passion for this unique endeavour. With just two employees, including herself and the horse whisperer extraordinaire, Jack, Horse Connect aims to offer more than just a service – it's a lifeline for those seeking self-discovery and growth.

The genesis of Horse Connect stems from Mulder's diverse background as an educational assistant and a music teacher. Witnessing the toll of the pandemic on mental health, she recognized the healing power of horses and seized the opportunity to become an Equine Assisted Learning Facilitator. For Mary Jean and Jack, it's not merely a business; it's a calling to bring awareness to the transformative potential of equine therapy.

What sets Horse Connect apart is its emphasis on experiential learning. Unlike traditional therapy, participants do not ride horses; instead, they engage in carefully crafted activities that foster personal insights and growth. Mary Jean emphasizes that Horse Connect is not just for therapy; it's a space for authentic interactions and profound learning experiences.

Operating for less than a year, Horse Connect envisions growth beyond its current setup. With plans for an indoor facility, Mary Jean aims to expand their offerings and ensure the weather doesn't hinder their impactful programs. Currently situated on a 156-acre farm, Horse Connect blends nature's tranquility with the wisdom of horses to create a holistic learning environment.

Mary Jean's journey into Equine Assisted Learning began with Equine Connection, the Academy of Equine Assisted Learning, based in Carseland, Alberta. Through rigorous training and a passion for human development, Mary Jean found her purpose in facilitating transformative experiences for her clients.

Reflecting on her role in the ag industry, Mary Jean cherishes the community spirit and resilience it

fosters. She believes in the importance of supporting local farmers and understanding their challenges, urging greater recognition and appreciation for their contributions to society.

As Horse Connect continues to grow, Mary Jean remains committed to her mission of facilitating personal growth and community engagement. With the unwavering support of Lacombe County, Mary Jean invites all to experience the magic of equine-assisted learning firsthand.

In a world marked by uncertainty, Horse Connect stands as a beacon of hope, offering solace, learning, and growth amidst the tranquillity of the countryside. As Mary Jean and Jack continue their journey, they invite others to join them in discovering the transformative power of horses and the boundless potential within each of us.

#### CONTACT HORSE CONNECT

- Facebook: [Horse Connect](#)
- Phone: 587-876-7309
- Email: [horseconnect23@gmail.com](mailto:horseconnect23@gmail.com)





# COUNCIL HIGHLIGHTS

April 25, 2024

**PUBLIC HEARING FOR BYLAW NO. 1408/24  
RESERVE LAND DESIGNATION**

A public hearing was held for Bylaw No. 1408/24 pertaining to proposed amendments to update lands designated as Reserve under previous iterations of the Municipal Government Act (MGA) to the appropriate designation under the current MGA and designated lands which are managed as Municipal Reserve, Environmental Reserve, and Public Utility Lot to the appropriate designation. Bylaw 1408/24 will provide clarity to the management of County lands by removing ambiguity to the land's intended use, and bring additional legislative support to Policy RC(8) and Bylaw 1398/23.

Bylaw No. 1408/24 received second and third readings and was passed.

**2023 OPERATING SURPLUS AND RESERVE  
ALLOCATION**

The County realized a net cash operating budget surplus of \$5,129,545. By resolution of Council, the

operating budget surplus was allocated, in parts, to the New Payment Reserve, Fire Services Reserve, Water/Wastewater Reserve, Gravel Reserve, Operational Reserve, and Unrestricted Surplus.

**COUNCIL ROAD TOUR**

Council will conduct a road tour of the County on June 5 and 19, 2024 with tour stops to be determined prior to the tour.

**LACOMBE COUNTY FUEL TENDER**

The County Manager was directed to award the 2024 Fuel Tender to Central Alberta Co-op.

**POLICY RC(1) FUNDING APPLICATION  
– BENTLEY COMMUNITY HALL STAIR  
REPLACEMENT**

Council defeated a resolution to fund 61%, to a maximum of \$58,730, of the cost of the Bentley Community Hall Front Entrance Stair Replacement.

**2022 FINANCIAL STATEMENTS**

Representatives of BDO LLP presented the draft 2023 audited financial statements, the final report to Council, management letter, and letter of representation. By resolution of Council, a closed meeting was held to discuss matters pertaining to the financial statements; and further, the audited financial statements were approved, as amended, to include the 2023 surplus allocation to reserves.

**SYLVAN LAKE WATER AND WASTEWATER  
COMMISSION PHASE 5A PROJECT**

Lacombe County will request that the matter of the Sylvan Lake Regional Water and Wastewater Commission Phase 5A project be included on the May 6, 2024 Sylvan Lake Intermunicipal Development Plan committee meeting agenda.



Council Highlights & Minutes can  
be found on our website at  
[www.lacombecounty.com/council](http://www.lacombecounty.com/council)

# COUNCIL HIGHLIGHTS

May 9, 2024

**DROUGHT MANAGEMENT PLAN**

The Lacombe County Drought Management Plan, as developed by the Drought Management Committee received Council approval. The County Manager was directed to proceed with implementation of the Drought Management Plan.

**LACOMBE REGIONAL WASTE SERVICES  
COMMISSION – SEASONAL LOT TIPPING  
FEES**

The County Manager was authorized to execute a Seasonal Lot Solid Waste Tipping Fee Agreement with Lacombe Regional Waste Services Commission for the period January 1, 2025 to December 31, 2026. The agreement will be based on 345 “deemed seasonal lots”, a population density of two persons per lot, and seasonal lot occupancy being established as 40% of the year, at a total cost to the County of \$17,940.

**GRAVEL INVENTORY SUMMARY**

Council received an overview of the County's Gravel Inventory Summary, including current gravel inventory, active pit boundaries, current yearly requirements, the current gravel program, exploration and purchase history, reclamation, and contracted gravel usage.

**LACOMBE COUNTY BRAND**

Council was provided with a history of a livestock brand that has recently been registered, in the name of Lacombe County, as an official honorary brand. The branding irons and a write-up regarding the history and significance of the brand are displayed in the lobby of the Lacombe County Administration Building.

**DISCUSSION TOPICS FOR MEETING WITH  
RCMP DETACHMENT COMMANDERS**

Council will meet with the RCMP Detachment Commanders of Bashaw, Blackfalds, Ponoka, Rimbey, and Sylvan Lake, on June 4, 2023. Council identified a list of topics for discussion at the meeting.

**DISCUSSION TOPICS FOR MEETING  
WITH ALBERTA TRANSPORTATION AND  
ECONOMIC CORRIDORS**

Council will meet with representatives of Alberta Transportation and Economic Corridors on June 13, 2024 to discuss matters that are relevant to Lacombe County. Council identified a list of topics for discussion at the meeting.

**COUNCIL ROAD TOUR VENUE SELECTION**

Council will conduct a road tour of the County on June 5th and 19th, 2024. Council finalized a list of locations they wish to visit during the tour.

**BYLAW NOS. 1412/24 AND 1413/24 ANNUAL  
REVIEW**

Bylaw No. 1412/24, a bylaw to amend the County's Municipal Development Plan and Bylaw No. 1413/24, a bylaw to amend the County's Land Use Bylaw, received first reading and approval to hold a public hearing. A public hearing was set for June 13, 2024 at 9:15 a.m.

**BYLAW NO. 1414/24 QEII WEST AREA  
STRUCTURE PLAN**

By resolution of Council, Bylaw No. 1414/24 QEII West Area Structure Plan received first reading and a public hearing was set for June 13, 2024 at 9:00 a.m.

**BYLAW NO. 1409/24 VILLAGE OF ALIX/  
LACOMBE COUNTY INTERMUNICIPAL  
DEVELOPMENT PLAN**

Bylaw No. 1409/24, a bylaw of Lacombe County for the purpose of amending the Village of Alix/Lacombe County Intermunicipal Development Plan, was read a third time, and so passed by Council.

**BYLAW NO. 1415/24 REGULATING AND  
CONTROLLING SPEED OF VEHICLES**

Bylaw No. 1415/24 was presented for Council's consideration and, by resolution, received first, second, and third reading, and was passed. This bylaw pertains to regulating and controlling the speed of vehicles within Lacombe County.

**SUMMER VILLAGE OF GULL LAKE: SCOTT  
DRIVE GATE**

Doug Francouer, Mayor of the Summer Village of Gull Lake and Harold Wynne, CAO of the Summer Village of Gull Lake, provided a presentation to Council regarding a potential gate at Scott Drive. The County Manager was directed to prepare a report and recommendation regarding the proposed gate, for consideration at a future Council meeting.

**CAMP LG BARNES**

Dave Bayduza provided a presentation to Council on the activities and initiatives of Camp L.G. Barnes. The County Manager was directed to prepare a report and recommendation regarding County financial support for Camp L.G. Barnes.

**Regularly Scheduled Meetings  
for Lacombe County Council**

**Committee of the Whole** - First Tuesday of  
every second month at 9 a.m.

**Council & MPC** - Second and fourth Thursday of  
every month, starting at 9 a.m..

*The public and media are welcome to attend  
all Council & MPC meetings. An agenda will  
be posted to the website prior to the meeting.*



# Understanding Your 2024 Property Tax Payments: A Guide for Lacombe County Taxpayers

As Lacombe County prepares for its annual property tax assessment and collection process, it's crucial for all taxpayers to be informed and prepared for the upcoming deadlines. Our aim is to ensure that each resident and business owner is equipped with the knowledge to fulfill their obligations smoothly and efficiently.

Here's everything you need to know about the 2024 property tax cycle:

## Property Tax Notices Dispatched

Lacombe County will send out our 2024 Assessment and Tax Notices in May. These notices serve as your formal announcement of the property tax due for the current year. Please watch your mail for these important documents.

### Haven't Received Your Notice?

If you have not received your tax notice by the end of June, **it is imperative to contact the Lacombe County Office immediately.** Timely communication ensures you remain informed of your tax obligations and prevents any penalties for late payments.

It is **YOUR** responsibility to ensure you have received your property assessment and tax notice.

### Updating Your Mailing Address

**YOU** - the taxpayer- are responsible for ensuring Lacombe County has your correct mailing address. Updates to your mailing address are essential for receiving your tax notice and other important communications from the County.

In addition to being responsible for ensuring Lacombe County has your new mailing address, you need also to ensure that the Alberta Land Titles Office has your correct mailing address.

**Updates to your mailing address are essential for receiving your tax notice, other important County communications, as well as any mailings from the Alberta Land Titles Office.**

Please provide any changes to your address promptly to avoid any miscommunication by calling:

- Lacombe County at 403-782-6601 or emailing [info@lacombecounty.com](mailto:info@lacombecounty.com).
- Alberta Land Titles changes can be found at [https://servicealberta.ca/pdf/lt-manual/CHANGE\\_OF\\_ADDRESS.pdf](https://servicealberta.ca/pdf/lt-manual/CHANGE_OF_ADDRESS.pdf).

### Assessment Complaint Process

Questions regarding your property assessment can be answered by County assessment staff. If you disagree with your property assessment, you can file a complaint through the formal complaint process. **The deadline for filing complaints will be indicated on your notice,** and it is essential to act swiftly if you believe your assessment is inaccurate.

Detailed instructions on how to lodge a complaint are available on our website (<https://www.lacombecounty.com/en/living-here/assessment.aspx>) and at our office.

## Payment Deadlines and Options

All property tax payments are due no later than August 31, 2024. Lacombe County offers several convenient payment options.

- By Mail:** Send your payment to Lacombe County, RR3, Lacombe, AB T4L 2N3. Ensure your mail is postmarked by Canada Post no later than August 31 to avoid penalties.
- In Person:** Visit our County Office at 40403 RGE RD 274, Lacombe County, AB, during office hours. Additionally, a secure envelope mailbox is available at the road entrance for non-cash payments.
- Electronically:** Payments can be made via internet banking or, for businesses, EFT. Ensure funds are sent several days before the deadline to ensure the funds are received in the County's bank account by the deadline. Payments not received in the County's bank account after August 31 will receive a late payment penalty.
- By Credit Card:** Use OptionPay via our website, [www.lacombecounty.com](http://www.lacombecounty.com). Note that this service incurs a fee, which does not go to Lacombe County.
- Tax Installment Payment Plan (TIPP):** Enroll in TIPP for monthly payments instead of making a single annual payment. Enrollment forms are available at our office and online.

## Late Payment Penalties

**DON'T PROCRASTINATE!** Lacombe County has a zero-tolerance policy for late payments.

- Didn't receive your assessment/tax notice? **Contact us right away!**
- See an error on your assessment notice? **Contact us right away!**
- Received your assessment/tax notice? **Pay it TODAY, and avoid any late payment worries!**
- Don't want to pay it all at once (or do you find you're always last-minute)? **Sign up for the Tax Installment Payment Plan (TIPP).**

Payments after the August 31 deadline will incur a 6% penalty on September 1 on the outstanding taxes. A further 10% penalty will be applied on December 1 for outstanding tax balances after November 30.

**\*\*These penalties do not apply to taxpayers enrolled in TIPP.**

## Why Stay Informed?

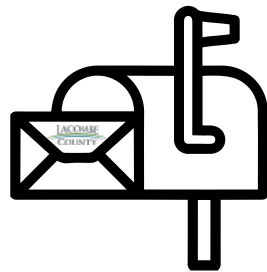
Property taxes are a significant aspect of municipal finance, directly affecting the quality of services and infrastructure in Lacombe County. By staying informed and meeting your tax obligations on time, you contribute to the continued development and maintenance of our community.

For any queries, assistance, or to update your information, please contact the Lacombe County at 403-782-6601. Let's work together to ensure a smooth and efficient tax process for everyone involved.

## Responsibilities for Residents TAXPAYERS' GUIDE

### 1 Watch for your 2024 Assessment & Tax Notices in the mail.

We will send out our 2024 Assessment and Tax Notices in early May. These notices serve as your formal announcement of the property tax due for the current year. Please watch your mail for these important documents.



### 2 Didn't receive a notice?

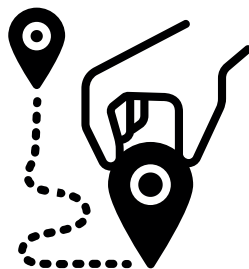
If you didn't receive your 2024 Assessment and Tax Notice by mid-June, contact the Lacombe County Office immediately.

It is **YOUR** responsibility to ensure you have received your notice.

### 3 Updating your mailing address

**YOU** - the taxpayer - are responsible for ensuring Lacombe County has your correct mailing address.

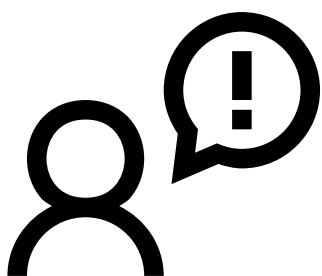
Updates to your mailing address are essential for receiving tax notice, other important County communications, and info from the Alberta Land Titles Office.



### 4 Assessment complaint process

Questions regarding your property assessment can be answered by County assessment staff.

There is a deadline for filing a complaint, which will be indicated on your notice.



### 5 Payment deadlines and options

All tax payments are due no later than August 31, 2024. Lacombe County offers several convenient payment options (mail, in person, electronically, credit card, payment plan).

**DON'T PROCRASTINATE!** Lacombe County has a zero-tolerance policy for late payments.





# AROUND THE COUNTY

## JUNE 2024 Seniors' 55+ WEEK



### MONDAY JUNE 3

**Chair Yoga 9-10 AM**  
with Lifelong Learning  
At the Wolf Creek Church  
\*Call to Register 403-782-7955

**FCSS Movie**  
**'On Golden Pond'**  
Showing at Lacombe City  
Cinemas  
**1:15 PM and 1:45 PM**  
\$5 Admission  
(includes popcorn and pop)  
Tickets at the door.

**Fibre Friends Art Open House**  
**1-9 PM (Drop In)**  
At the Lacombe Memorial Center  
(upstairs in the Kinsmen Room)

### TUESDAY JUNE 4

**Seniors Workout & Light**  
**Refreshments 9:45-11:30 AM**  
At the Burman University  
PE Centre

**Brain Education Session 1-2 PM**  
with our Wolf Creek PCN Geriatric  
Nurse  
At the Lacombe Memorial Center  
(upstairs in the Rotary Room)  
\*Register at [info@wcpn.ca](mailto:info@wcpn.ca)

**Outdoor Community Market**  
**1:30-4 PM**  
At Royal Oak Village

**Ice Cream Social 2:30-3:30 PM**  
At Lacombe Extended Care

### WEDNESDAY JUNE 5

**Pickleball**  
**9-11 AM**  
Leaders & equipment on site  
At the Burman University  
PE Centre

**Water Fitness with**  
**Potluck to follow**  
**11:10-11:55**  
At the Kinsmen Aquatic Centre

**Strawberry Tea**  
**1:30-3:30 PM**  
\$3 Admission  
At the Kozy Korner

### THURSDAY JUNE 6

**Tea & Walking Tour**  
**9:30-11:30 AM**  
\$10 Admission  
At the Ellis Nature Centre

**Instructional Teaching Kitchen**  
**'Cooking for Two'**  
**10-11:30 AM**  
At Royal Oak Village  
\*Call to Register 403-373-4218

**Tea & Goodies with**  
**Entertainment 1:30-3:30 PM**  
At the Lacombe Legion

### FRIDAY JUNE 7

**Come & Go Coffee**  
**10 AM-12 PM**  
At the Mary C. Moore Library

**Outdoor BBQ with**  
**Entertainment**  
**12-2 PM**  
At the Lacombe Seniors Lodge



### FREE CONNEX BUSSING

Available to all Seniors' Week events by reservation.  
Call 403-782-6637 Ext. 308 to book.

### FREE WATER FITNESS CLASSES

June 3rd- June 9th Kinsmen Aquatic Centre

### 1/2 PRICE LIBRARY CARDS

June 3rd- June 9th Mary C. Moore Library

### NEW AT MCMPL: FIBRE ARTIST GROUP MEETS EVERY MONDAY IN THE KINSMEN ROOM



The Lacombe & Area Spinners, Weavers, and Fibre Artists will be meeting in the Kinsmen Program Room every Monday, anyone interested can drop in between the hours of 1:00 and 9:00, starting Nov 6.

Hosted by the Mary C Moore Public Library  
Contact Miranda if you would like to be in touch with this group:  
[miranda.cl@prlab.ca](mailto:miranda.cl@prlab.ca)





**Blackfalds' Servus Credit Union Public Library**

**Free memberships for Lacombe County patrons! When signing up provide your legal land description.**

### Programming

**Spanish Story Time** *Ages 0-5*  
**Toddler Sensory Class** *Ages 2-3*  
**Tales and Tunes** *Ages 3-6*  
**Videogame Club** *Ages 8+*  
**Youh Art Club** *Ages 10+*  
**Adult Game Night** *Ages 18+*  
**Chess Club** *All Ages*  
**Family Films** *All Ages*

*\*For more program information check out our website and social medias*

### Borrowing

Our library card gives you access to a variety of services, eResources such as eAudio, eBooks, eMagazines & more!

Visit us on our website & social medias



### Hours

|           |              |
|-----------|--------------|
| Sunday    | 1 pm - 5 pm  |
| Monday    | 10 am - 8 pm |
| Tuesday   | 10 am - 6 pm |
| Wednesday | 10 am - 8 pm |
| Thursday  | 10 am - 6 pm |
| Friday    | 10 am - 6 pm |
| Saturday  | 10 am - 5 pm |

### Contact

403-885-2343  
[www.blackfaldslibrary.ca](http://www.blackfaldslibrary.ca)  
Eagle Builders Centre 5302 Broadway Avenue, Blackfalds, AB T0M 0J0

## SELF CARE Matters

Available at Alix and Area Community Resource Centre



**Lacey Dee's Holistic Health** - In Alix Monthly (Thursday)  
Contact Lacey Malowski- Holistic Registered Nurse  
Alternative & holistic health services to help you uncover the root cause of your illness. Detox foot baths, microcurrent therapy, holistic nutrition, vitamin infusions/injections, food intolerance testing. 587-317-4748  
Book online: <https://lacey-dees-holistic-health.square.site/>

**Alternative Acupuncture** - In Alix Monthly (Tuesday)  
Contact Lisa Cardinal- Doctor of Acupuncture  
Revitalize your health, naturally & holistically & boost your wellbeing with acupuncture services.  
Direct billing to health insurance.  
587-930-7999 Book online: [alternativeacupuncture.ca](http://alternativeacupuncture.ca)





**PrairieLand Psychology** - In Alix Alternating Wednesdays  
Contact Jessica Harvey- Registered Provisional Psychologist  
Primary modalities used are Acceptance and Commitment Therapy, Existential Therapy, Solution-Focused, and Emotion-Focused.  
For adults, kids, teens, couples, families. Services billable to health insurance.  
780-691-7962  
Book online: [prairielandpsychology.janeapp.com](http://prairielandpsychology.janeapp.com)

**The Wellness House** - In Alix Alternating Mondays (Begins May 13)  
Contact Cally Erickson- Registered Provisional Psychologist  
For children, youth, families, adults and couples. Focus on trauma and EMDR.  
Services billable to health insurance. Call/ Text: 403-741-7155  
or Email: [thewellnesshouse.cs@gmail.com](mailto:thewellnesshouse.cs@gmail.com)



**Henna Rose Massage and Aesthetics** - In Alix Every Thursday  
Contact Melissa Perez- Registered Massage Therapist  
Services include massage, reiki, cupping and foot reflexology.  
Direct billing to health insurance. 403-789-0111  
Book online: <https://hennarose.com/>



**Foot Care by Kaitlin** - In Alix Monthly (Tuesday)  
Contact Kaitlin Nielsen/ Cheryl Saunders- Foot Care Nursing  
Advance nursing foot care, basic maintenance and hand/foot reflexology.  
Diabetic and high-risk care, personalized foot assessment and care plan.  
Book in home and clinic. 587-377-6099  
<https://footcarebykaitlin.ca/>





**Community Resource Centre**  
Alix and Area  
Something is always well-being

Contact us for assistance or service provider directly to book and for more information on fees.  
**403-396-3369 Bay 1, 5008 50 Ave, Alix AB**





If your child attends school in:  
**Lacombe \* Bentley \* Clive \* Alix**  
 You may qualify for  
**Tools for School!**  
**APPLY NOW!!!**

**DEADLINE TO ORDER IS JULY 31, 2024**

**CONTACT 403-782-6637 OR  
 WWW.LACOMBEFCSS.NET**



Information collected that you provide to Lacombe & District FCSS is collected under the authority of the Freedom of Information and Protection of Privacy Act (FOIP) Section 33(c). This information will be used for the purpose of the "Tools for School" program. Your personal information is protected from unauthorized access, use and disclosure under Part 2 of the FOIP Act. Questions regarding this collection of personal information may be directed to info@lacombe-fcss.net or 403-782-6637.

## UPCOMING EVENTS

**June 3  
10am-4pm  
at: LMC**

**Volunteer Leadership and Management WORKSHOP**

**COST \$60 includes lunch**

This course will help you develop your leadership and management style.

**In this 1-day workshop, you will learn what type of leader you are and what your leadership style is.**

Register by contacting CLLLA at 403-782-7955 or office@cllla.com

**June 17  
10am-3pm  
at: LMC**

**Policies and Procedures WORKSHOP**

**COST \$60 includes lunch**

**In this 1-day workshop, you will discover how to:**

- Define policies and procedures
- Define board policy vs. management policy
- Create a policy checklist
- Introduce new policies and procedures to volunteers
- Monitor and evaluate the progress

Register by contacting CLLLA at 403-782-7955 or office@cllla.com



**Move your body, make connections & socialize!**  
**Bentley Seniors Drop In - Town Office**  
**Call 403.748.2160**

## Wellness Mornings

- **Mondays 10 to 11 am** Seated Range of Motion Exercises
- **Wednesdays 10:30 to 11:45** Chair Yoga - light movements

### Seated Range of Motion

Join us in our seated exercise programs! These programs allow our clients to participate in an exercise program safely from the comfort of their homes. Research has shown that range of motion exercise has many benefits, including:

Increased mobility, maintenance, and function of joints. Improved movement efficiency. Increased Independence. Decreased pain.

### Chair Yoga

Never worry about falling or about your mobility level again. This class is designed to accommodate for those in wheelchairs, or who are concerned about their balance. The class is stretch-worthy while still being relaxing. It's the perfect balance for those looking for a yoga class that meets their mobility needs.

**FREE Sessions Run Until End of May**

**WELLNESS MORNING PARTNERS:**  
 BENTLEY SENIORS DROP IN, FCSS/TOWN OF BENTLEY, EDMONTON SENIORS CENTRE, BRENDA STRAFFORD FOUNDATION/REC@HOME



# WHAT WE DO

Alix and Area Community Resource Centre

## Highlights

**Senior's Week:** We appreciate & celebrate our seniors and all of the contributions they provide our community. Visit us for a treat or bloom! June 3 to 6, 10AM-4PM.

**Touch a Truck- Bringing the Community Together Monday, June 3 @ 5:30PM to dusk, at the school grounds. Barbecue, Face Painting and Carnival Games.** Free and ALL AGES WELCOME. Presented in partnership by Alix Mirror Wellness Supports Society, Lacombe and Area Family Resource Network, Alix Fire & Medical Dept., Alix MAC School and Alix MAC Parent Council.

### We Need You!

Do you wish to be a part upcoming fundraising projects & events? Please let us know if you can help:

**Bartending Shifts at Ponoka Stampede:** Perks include entrance to the grand stand... For rodeo and concert attendance on the day you volunteer (must be 18+).\*

June 25:  
**Tuesday**  
 5PM-9PM  
 9PM-2AM

June 27:  
**Thursday**  
 12PM-7PM  
 4PM-7PM  
 7PM-2AM

June 29:  
**Saturday**  
 12PM-7PM  
 7PM-2AM  
 9PM-2AM

**Big Valley Jamboree: August 1-4 AND Casinos: Date TBA**  
 More details coming soon on shifts and schedule.

**UPCOMING BABY CLINICS:** Monthly routine child immunizations can be booked, during 10AM-1PM. Jun 19, Sept 25, Oct 23, Nov 20, Dec 18, Jan 22 & Feb 26. Please call Stettler Health Unit, 403-742-3326. Note: This only applies to children 6 months or older, to book routine immunizations.

## Services Available

- Information & Referral
- Resource Navigation
- Volunteer Services
- Family Wellness
- Meals on Wheels
- Community Services
- Adult Learning
- Alix Food Bank
- Wise Owls

alixmirrorwellness@gmail.com  
 Follow us on Facebook @AlixandAreaCommunityResourceCentre  
 www.alixcra.com



**Monday to Thursday 10:00 AM - 4:00 PM**

\*Closed all statutory holidays\*  
 Bay 1, 5008 50 Ave, Alix, AB  
**403-396-3369**



**gull lake centre**  
gulllakecentre.ca



**Summer Camps**  
Come Dive In to Summer!  
Discover camps for kids ages 5-18,  
just 15 minutes outside of Lacombe.  
Sign up now at gulllakecentre.ca

**lmc**  
**lacombe memorialcentre**

The perfect place for people to connect.

**Book your upcoming event now!**

- Christmas parties
- training/workshops
- anniversaries
- celebrations of life
- meetings
- weddings
- small conferences
- exercise classes

Visit [www.lacombe.ca/lmc](http://www.lacombe.ca/lmc) or call 403-782-6668 ext 1

Home of Anna Maria's Cafe, Mary C. Moore Public Library  
and Lacombe & District FCSS.

**fcss**  
Lacombe & District  
Family and Community  
Support Services

**Lacombe Connex**

**LACOMBE COUNTY**

Did you know?  
County residents within 20 km of  
Lacombe can book the bus for errands  
& medical appointments.



Please call 403-782-6637 for more information  
or to reserve your spot

Make a  
**SPLASH**  
at the Kinsmen Aquatic Centre  
5429 53rd Street

The Gary Moe Sportsplex is home to the Kinsmen Aquatic Centre (KAC). Come take a dip at the Kinsmen Aquatic Centre. We offer a climbing wall, small slide, rope and many special events throughout the year.

**What's Happening at the pool:**

- Summer swim lesson registration is now open
- May 20, 2024-Public Swim from 1:00-5:00 pm only
- June 3-7, 2024 is Seniors week. All water fitness classes are free this week for seniors at the Kinsmen Aquatic Centre. A special potluck will follow the 11:10-11:55 am class on Wednesday, June 5, 2024.

For more information on the KAC schedule, pool rentals and advanced courses call 403.782.1278 or visit [www.lacombe.ca/pool](http://www.lacombe.ca/pool).



**CITY OF LACOMBE**

**Mary C Moore Public Library**  
**First Edition Book Club (updated)**  
First Tuesday of the Month at 7pm in the Read & Relax Area of the Library

| Book Title                  | Author              | Date    |
|-----------------------------|---------------------|---------|
| THE ISLAND OF MISSING TREES | ELIF SHAFAR         | Jan 2   |
| No Two Persons              | Barbara Hammer      | Feb 6   |
| POSTCARD                    | ANNE BEREST         | March 5 |
| TWO NIGHTS IN LISBON        | CHRIS PAVONE        | April 2 |
| THE MEASURE                 | NIKKI ELLICK        | May 7   |
| Lord of the Flies           | William Golding     | June 4  |
| THE HOROWITZ                | JOEL HOROWITZ       | July 2  |
| BLACK CAKE                  | CHARMAINE WILKERSON | Aug 6   |
| THE PRISON BOOK CLUB        |                     | Sept 3  |
| Ready for Takeoff           | Joseph Bruchac      | Oct 1   |
| REMARKABLY BRIGHT CREATURES | SHELBY VAN PELT     | Nov 5   |
| Dec 10: 2024 Wrap-Up Party  |                     |         |

\*Dates listed are the 2024 discussion dates for the selected book.

New members are welcome!  
Contact Miranda for more information on this club: [miranda.el@prlab.ca](mailto:miranda.el@prlab.ca)  
[lacombelibrary.com/book-club](http://lacombelibrary.com/book-club)



**BENTLEY BOUTIQUE**

Use west entrance beside bay door.  
Bentley Long Term Care Facility  
4834 - 52 Avenue, Bentley

**Open Tues/Thurs 10-12 & 1-3**

Stretch Your Budget

Recycle Clothing

ALL FOR JUST A SMILE!

Swap Kids Clothes As They Grow



**MARY C. MOORE PUBLIC LIBRARY**  
LACOMBE & DISTRICT

**CHESSE CLUB**

Thursdays 2-3:30PM  
Kinsmen Library Program Room  
Mary C Moore Public Library  
open to all ages

For more information, please contact  
Leslie (homeschool organizer) at [hello@lesliannecoaching.com](mailto:hello@lesliannecoaching.com)  
or Kirstin (MCMPL program coordinator) at [kbouwsema@prlab.ca](mailto:kbouwsema@prlab.ca)



**MCMF**  
Mirror & Community Market Fundraiser

UPCOMING MARKETS:  
MAY 5TH & 19TH, JUNE 2ND, JULY 7TH, AUGUST 4TH

MIRROR COMMUNITY HALL 11-3  
5102 50 AVE  
LOOKING FOR VENDORS, MUSICIANS, AND CHEFS!  
WE HAVE A COMMERCIAL KITCHEN PERFECT FOR A POP UP LUNCH!

ALL TABLE/KITCHEN RENTAL FEES GO TOWARDS A STAIR LIFT AT THE MIRROR COMMUNITY HALL

EMAIL [MANDER088@HOTMAIL.COM](mailto:MANDER088@HOTMAIL.COM)  
OR FIND US ON FACEBOOK  
"MIRROR AND COMMUNITY MARKET FUNDRAISER"





**Eckville Handicraft Group Presents...**

# ECKVILLE QUILT & WEAVING SHOW

Quilts, Quilts, and more Quilts!  
Bake Sale  
Tea Room  
Silent Auction items up for bid  
Vendors on site

**June 7-8, 2024**  
**10am -4pm**

**\$5 Admission**

Eckville Legion  
5027-51Ave.

# LINCOLN HALL STEAK FRY CABARET

BOB RONNIE CATERING  
The Rojo's

## SATURDAY MAY 25/24

**\$60** | 5.30 Doors open | Cash Only Bar - \$5 Drink  
| 6.30 Dinner by Bob Ronnie Catering  
| 9.00 Cabaret - Music by The Rojo's Band

**TICKETS ARE \$60 EACH - GET 'EM EARLY!**  
| PICK UP TICKETS IN PERSON AT: (cash only)  
LA Liquor in Lacombe OR Gull Lake Vet Clinic  
| ONLINE TICKETS: (e-transfer/credit cards/paypal)  
Use the QR Code below or visit: [lincolnhall.ca](https://lincolnhall.ca)  
• FOLLOW US: INSTAGRAM & FACEBOOK SUBSCRIBE: [lincolnhall.ca](https://lincolnhall.ca)



## Home Support Services

### Reliable Housekeeping for Seniors

Trained & Screened providers

**Services Offered:**

- Laundry
- Kitchen, Living room, Bathroom cleaning
- Dusting
- Mopping
- Vacuuming
- Meal prep assistance
- Weekly, bi-weekly, monthly
- Lacombe, Blackfalds, Clive and Lacombe County

**CALL NOW !**

LACOMBE & DISTRICT FCSS: 403-782-6637  
CLIVE FCSS: 403-784-2020 (TUES & THURS)

SUPPORTED BY: 

**Interactive Family Programming for ages 0-6**

**Mondays 9:30 to 11**  
**Literacy & Music**  
Last Day before Summer Break - May 27th

**Fridays 9:30 to 11:30**  
**Stay & Play**  
Last Day before Summer Break - May 31st

Location: Basement of Town Office  
Contact: Community Services 403-748-2160  
Programs Facilitated by: Parenting Proactively 101



## fcss Home Support

Lacombe & District Family and Community Support Services

CARING . SCREENED . TRAINED . MONITORED . PROFESSIONAL



## Services for Non-Profits LUNCH & LEARN

June 13 12pm - 1pm at: LMC

Alberta Municipalities recognizes that not-for-profits are a vital part of the fabric of our communities.

Come and learn about what services we have to offer Non-profits including a:

- Board Development Program
- Grants
- Casual Legal Services
- Insurance & Risk Services
- And More

Register by June 6th by contacting Sandi at 403-782-1266 or [ssstewart@lacombe.ca](mailto:ssstewart@lacombe.ca)

## SOAT ME VOLUNTEER WITH KIDSPORT

So ALL Kids Can Play!

OUR MEMBERS HAVE FUN WHILE HELPING ALL KIDS OFF THE SIDELINES AND INTO THE GAME.

### COMMUNITY REPRESENTATIVE

- The Community Rep acts as the primary relationship builder between KidSport Lacombe County and the athletic associations in your community.
- The term is TWO (2) years. The Community Rep may serve 3 consecutive terms as the Community Representative. Once these terms have been completed the Community Rep may step into another Board position.
- Develop and maintain relationships with community members and partners
- Communicate in regular intervals with organized athletic associations in your community

Apply today at [lacombe@kidsportab.ca](mailto:lacombe@kidsportab.ca)  
Learn more about KidSport Lacombe County at <https://kidsportcanada.ca/alberta/lacombe/>

**JOIN OUR BOARD!**



## Camp Silverside Invites YOU in 2024!

We are excited about the upcoming summer camp season! We have some new activities under development, great staff returning, and all the favorites your kids love. Registration is open and we think you will be able to find a camp that fits no matter the age of your children from grade 1 to grade 12.

Register online at <https://silversides.ca/camp-2024>, or contact the camp with any questions.

See you this summer

403-478-2689

[campsilversides@onehopecanada.ca](mailto:campsilversides@onehopecanada.ca)



### A Summer Camp for Everyone

**Family Camp** - June 28 - July 1 - \$350/family

**Squirt Camp** - July 2-5 - \$200 (Grades 1-3)

**Adventure** Grades 4-6- July 7-12, July 28-Aug 2- \$380

**Explorer** Grade 2-4 - July 14-19, Aug 4-9- \$355

**Middle School Mayhem** Grade 6-9- July 21-26 - \$395

**Teen-A-Palooza** - August 11-16 - \$395 -

(Grade 8-12)



JUNE 2024

| Sun | Mon   | Tue                               | Wed | Thu  | Fri                               | Sat |
|-----|---|-----------------------------------|-----|--|-----------------------------------|-----|
| 2   | 3   | 4<br>Committee of the Whole (9AM) | 5   | 6  | 7                                 | 8   |
| 9   | 10  | 11                                | 12  | 13<br>County Council (Public Hearings - Page 2/Page 3)   | 14<br>County News Submissions Due | 15  |
| 16  | 17  | 18                                | 19  | 20<br>ManVan cancer screening (11AM - 3PM - see page 11) | 21<br>County News Published       | 22  |
| 23  | 24<br>Business Retention & Expansion Survey closes (see front page) | 25                                | 26  | 27<br>County Council 9AM                                 | 28                                | 29  |
| 30  | JULY 1<br>CANADA DAY (Office closed)                                | 2                                 | 3   | 4  | 5                                 | 6   |

Upcoming Events: JUNE 4 - Committee of the Whole meeting | JUNE 13 - County Council meeting | JUNE 20 - The ManVan | JUNE 27 - County Council Meeting

# Help us promote YOU!



Do you know a **business, person, place or volunteer** you want to see profiled in County News?

Do you have a photograph you want to share?

If so, email **communications@lacombecounty.com** with your ideas, photographs or stories.

We'd love to hear from you!

Proudly Maintaining Your Highways  
Counties: Lacombe | Ponoka | Red Deer | Wetaskiwin  
Report road conditions 24/7  
1 877 875 3263

Lacombe County Directory

RR3, Lacombe Alberta T4L 2N3 www.lacombecounty.com

|                     |                                   |  |
|---------------------|-----------------------------------|--|
| Department Numbers: | Main Office - 403-782-6601        |  |
|                     | Planning Services - 403-782-8389  |  |
|                     | Community Services - 403-782-8959 |  |
|                     | Operations - 403-782-8379         |  |
|                     | Public Works Shop - 403-782-3567  |  |

General

|   |              |
|---|--------------|
| After Hours Emergency Answering Service | 403.357.1210 |
| Administration Fax                      | 403.782.3820 |
| Public Works Fax                        | 403.782.5356 |

For Service Requests, see our website - or phone the switchboard at 403-782-6601

| Council   | Home         | Cell         |
|---|--------------|--------------|
| John Ireland, Div. 1 (jireland@lacombecounty.com)   |              | 403.392.3981 |
| Brenda Knight, Div. 2 (bknight@lacombecounty.com)   | 403.788.2168 | 403.550.2168 |
| Barb Shepherd, Div. 3 (bshepherd@lacombecounty.com) |              | 403.340.9724 |
| Dwayne West, Div. 4 (dwest@lacombecounty.com)       |              | 403.660.2328 |
| Ken Weenink, Div. 5 (kweenink@lacombecounty.com)    |              | 403.350.8014 |
| Allan Wilson, Div. 6 (awilson@lacombecounty.com)    |              | 403.506.3735 |
| Dana Kreil, Div. 7 (dkreil@lacombecounty.com)       | 403.746.3607 | 403.358.9400 |

Senior Administration

|   |  |
|---|--|
| Tim Timmons, County Manager<br>ttimmons@lacombecounty.com                     | Call 403-782-6601 to speak with the County Manager or with a Lacombe County Director |
| Michael Minchin, Director of Corporate Services<br>mminchin@lacombecounty.com |  |
| Bill Cade, Director of Operations<br>bcade@lacombecounty.com                  |  |
| Dale Freitag, Director of Planning Services<br>dfreitag@lacombecounty.com     |  |
| Dion Burlock, Director of Community Services<br>dburlock@lacombecounty.com    |  |

Follow us online, and stay up-to-date on Lacombe County news, events and other information!

facebook.com/LacombeCounty

instagram.com/lacombecounty

twitter.com/LacombeCounty

youtube.com/LacombeCounty

www.lacombecounty.com

Phone | 403.782.6601 Email | info@lacombecounty.com Fax | 403.782.3820

COUNTY NEWS

is published by Lacombe County and printed by CentralWeb. If you have feedback or story ideas, please contact:

Nicole Plewis, Communications Coordinator  
communications@lacombecounty.com  
403.782.6601