

# County News

Friday, August 15, 2025 | Volume 8

## Harvest Season is here! Safety reminders from Lacombe County

Harvest season is upon us in Lacombe County, and with it comes a unique mix of activity on our rural roads. Farmers are hard at work bringing in their crops, school buses are back on their routes, and late-summer travellers are still enjoying the countryside. It's a busy time, and we all share the responsibility of keeping our roads safe. Whether you're driving a combine, a camper, or a car, a little patience and awareness go a long way.

### FOR FARMERS & AGRICULTURAL OPERATORS

- Expect increased traffic on rural roads, especially during school hours.
- Ensure all equipment is road-ready: lights, reflectors, and slow-moving vehicle emblems must be visible and functional.
- Return equipment to transport mode to reduce width.
- Plan your route to avoid low power lines and narrow bridges or culverts.

### FOR DRIVERS & TRAVELLERS

- Be patient and give yourself extra time — harvest equipment moves slowly and may take up more road space.
- Stay alert for turning or crossing machinery, especially on gravel roads and field entrances.
- Respect school zones and watch for children,

especially during morning and afternoon commutes.

### BACK TO SCHOOL + HARVEST = BUSY ROADS

- Slow down in school zones.
- Avoid distractions.
- Practice extra caution near bus stops and crosswalks.

### SAFETY TIPS FROM ALBERTA AGRICULTURE & FORESTRY

- Transport equipment safely and legally.
- Be aware of other motorists and road users.
- Follow all traffic laws.
- Make sure all safety markings and lights are in place and working.

### QUESTIONS OR CONCERNS?

For more information on road safety, please contact Lacombe County's Community Services Department at 403-782-8959 or visit our website: [www.lacombe-county.com](http://www.lacombe-county.com).

Let's work together to keep Lacombe County's roads safe this harvest season. A little extra time and attention can make all the difference. Stay alert, stay patient, and stay safe out there!

## What's Inside

2	<b>MUNICIPAL ELECTION</b>   Nomination Deadline is September 22.
3	<b>TAX DEADLINE: August 31, 2025</b>
3	<b>Grant announcement for Blackfalds' Broadway Reservoir Expansion Project</b>
5	<b>Blackfalds RCMP? Rural Crime Watch BBQ: August 27</b>
5	<b>SAFETY FIRST: Back to school reminders</b>
6	<b>Mirror Corner</b>
7	<b>Construction Updates</b>
9	<b>Environmental Stewardship Award: Nominations open until September 30.</b>
10-11	<b>Agriculture news</b>
12-13	<b>Subdivision &amp; Development Activity and Map</b>
14	<b>Planning FAQs   Businesses in the Agricultural Area</b>
15	<b>Workforce Development in Lacombe County</b>
15	<b>SURVEY   Business Survey on challenges facing local business community</b>
16	<b>Reminder   Register to VOTE!</b>
17	<b>Council Highlights</b>
19	<b>Assessment 101</b>
20	<b>Resources for Seniors</b>
21-23	<b>Community Events &amp; Info</b>

# It's harvest season...

LACOMBE  
COUNTY

## Stay ALERT | Stay PATIENT | Stay SAFE

LACOMBE  
COUNTY

SUCCESS GROWS HERE!

Publication Mail Agreement No 43726064

Return undeliverable items to:  
Lacombe County  
RR3, Lacombe, AB T4L 2N3

County News is available to read on our website every month. If you wish to stop receiving County News by mail, email [communications@lacombecounty.com](mailto:communications@lacombecounty.com) with your mailing address and we will take you off our mailing list.



# Nominations are OPEN

Nominations can be filed from January 1, 2025 until Noon on September 22, 2025

Visit [LacombeCounty.com/Election](https://www.LacombeCounty.com/Election) for more details



## 2025 Municipal Election



### NOTICE OF NOMINATION DAY

LOCAL AUTHORITIES ELECTION ACT  
(Section 26)

Local Jurisdiction: **LACOMBE COUNTY**, Province of Alberta  
Notice is hereby given that Nomination Day is Monday, September 22, 2025 and that nominations for the election of candidates for the following offices will be received at the location of the **Lacombe County Office** set out within the period beginning on January 2, 2025 and ending at 12:00 noon on Nomination Day.

Offices	Number of Vacancies	Electoral Division Number
COUNTY COUNCILLOR	1	Division 1
COUNTY COUNCILLOR	1	Division 2
COUNTY COUNCILLOR	1	Division 3
COUNTY COUNCILLOR	1	Division 4
COUNTY COUNCILLOR	1	Division 5
COUNTY COUNCILLOR	1	Division 6
COUNTY COUNCILLOR	1	Division 7

Location of Local Jurisdiction Office:

LACOMBE COUNTY OFFICE  
RR 3  
LACOMBE, AB

Rural Address: 40403 RGE RD 274

(Intersection of Highway No. 12 and Spruceville Road  
(Rge Rd 27-4) 2.5 miles west of QEII Highway and Highway No. 12 overpass west of Lacombe)

DATED at the District of Lacombe County in the Province of Alberta, this 15th day of August, 2025.



Michelle Eadie, Returning Officer  
returningofficer@lacombecounty.com  
403.782.6601  
[www.lacombecounty.com/election](https://www.lacombecounty.com/election)

## Why Municipal Government matters – and why you should consider running for council this election

When most people think about government, they think about the federal or provincial levels. But it is your municipal government—the one closest to home—that often has the most direct impact on your day-to-day life.

From the roads you drive on, to the parks your family enjoys, to how communities are developed, to the snow being cleared after a storm—municipal government decisions affect you daily. In Lacombe County, Council plays a vital role in shaping these services and ensuring our communities thrive.

### LOCAL DECISIONS, LOCAL VOICES

Municipal councillors are your neighbours. They understand the needs of the region because they live and work here, too. Their decisions shape:

- Local road construction and maintenance
- Agricultural and environmental services
- Emergency response and fire protection
- Land use planning and development

- County-supported community programs and infrastructure funding

Running for municipal office is your chance to shape the future of your community. It's not about politics—it's about service, stewardship, and standing up for what matters to your neighbours.

### WHY RUN?

Municipal councils need people from all walks of life—farmers, business owners, parents, retirees, and everyday residents—who care about the places we call home.

- You know your community's needs.
- You care about how tax dollars are spent.
- You want to make a difference for future generations.

When you run for municipal council, you're stepping up to be a voice for your community. The decisions you make will directly impact your neighbours, your family, and your local quality of life.

Learn more at  
[www.LacombeCounty.com/election](https://www.LacombeCounty.com/election)

# Dignitaries announce grant to support Blackfalds' Broadway Reservoir Expansion Project

The Town of Blackfalds was successful in receiving the Government of Alberta's Local Growth and Sustainability Grant, as announced on Tuesday, July 15, by Minister of Municipal Affairs Dan Williams, who was joined by Lacombe County Reeve Barb Shepherd, MLA Jennifer Johnson, and Mayor Jamie Hoover.

The annual Grant supports local governments by funding infrastructure that:

- addresses growth pressures
- attracts economic development opportunities
- addresses unique or emergent needs in their communities

The \$2,314,486 grant will be going towards the Blackfalds Broadway Reservoir Expansion Project, which was brought forward initially by Lacombe County in late 2022 to discuss the limitations of the existing water and sewer servicing for the Aspelund Industrial Area (currently serviced by the Town through a Joint Servicing Agreement).

Contract 1, currently being built by Timcon, will include the installation of a large underground water tank (6,500 cubic metres) and connecting it to the water pump system, which will also be upgraded under Contract 2. This reservoir expansion project is necessary to support future growth (for a population of 20,000) and ensure enough water is available for both everyday use and fire protection within the Town and Lacombe County's Aspelund Industrial area.

The entire project is anticipated to cost approximately \$7.8 million made up of Contract 1, currently under construction, and Contract 2 being designed now for a future tender. The Town of Blackfalds will provide 59% and Lacombe County

will provide 41% of the total cost after the grant subsidy.

Town of Blackfalds – Mayor Hoover “While water infrastructure isn't necessarily flashy, it's absolutely essential to a thriving community. This reservoir expansion not only secures our capacity for future growth in population and industrial development, but it also reflects what's possible when municipalities and the Province work together to build strong, resilient communities.”

Lacombe County – Reeve Barb Shepherd “This project is a great example of what can be accomplished when municipalities work together toward shared goals. Through our partnership with the Town of Blackfalds and the support of the Government of Alberta, we're making strategic investments in infrastructure that will support growth, enhance fire protection, and open new opportunities for development in the Aspelund Industrial Area. This reservoir expansion benefits both our communities and demonstrates the power of regional collaboration.”

Lacombe – Ponoka – MLA Jennifer Johnson “It's no secret, central Alberta is the best place in our province to live, work, and raise a family. With more people moving here, it's great to see the Town of Blackfalds, Lacombe County, and Alberta's government step up to support our region's growth. This reservoir expansion will ensure that Blackfalds and the surrounding area can keep up with their growth now and well into the future.”

Province of Alberta – Minister of Municipal Affairs Dan Williams “Through our government's support for infrastructure projects like the Blackfalds Broadway Reservoir expansion, we are supporting population growth while also unlocking opportunities to grow the local economy.”



## Lacombe County Tax Deadline: AUGUST 31

Tax payments are payable to Lacombe County no later than August 31, and can be made using one of the following options:

- **By mail to:** Lacombe County, RR3, Lacombe, AB T4L 2N3
  - Mailed payments must be postmarked by Canada Post no later than August 31st of the current year. If the postmark is illegible or missing, the actual date of receipt by Lacombe County will apply.
- **In Person:** At the County Office (40403 RGE RD 274, Lacombe County, AB) during office hours (8:00 a.m. - 4:30 p.m.)
  - Deposited in the envelope mailbox located at the road entrance to the County office (do not submit cash).
- **Through Your Financial Institution:** Payments can be made at most financial institutions through internet or telephone banking.
  - Set up Lacombe County as a bill payee using roll number for taxes, utility account number for utilities.
  - Each roll and utility account number needs to be set up individually, or payments may be misapplied.
- **Electronic funds transfer (EFT):** Businesses, please contact the office if interested in paying by EFT.
- **By Credit Card:** visit [www.lacombecounty.com](http://www.lacombecounty.com) and pay through OptionPay, a secure third-party site, to make payment by credit card. (Please note that there is a fee for this service. Lacombe County does not receive any of the credit card fees.)
- **Tax Installment Payment Plan:** Those enrolled in the County's tax installment plan (TIPPs) will see their payment adjusted, annually in May to reflect the new tax rates for the current year.

The above due date and penalties DO NOT APPLY to ratepayers enrolled in the Tax Installment Payment Plan (TIPP), which allows property taxes to be paid on a monthly basis instead of one single payment. Application forms for enrollment are available at the Lacombe County Administration office or on the Lacombe County website.

Property owners who miss the tax payment deadline will have a 6% penalty applied on September 1 on the outstanding taxes owing. An additional 10% penalty will be added on December 1 for all taxes remaining unpaid after November 30.

# DEADLINE



# HOW TO RUN FOR COUNTY COUNCIL



What you need to know for a successful campaign

## KNOW THE ROLE

Councillors help guide decisions on roads, development, budgets, and services. You can learn the role by:

- Attend a Council meeting (in person or listen virtually).
- Talk to current councillors.
- Learn what's involved by attending a webinar.



## SUBMIT A NOTICE OF INTENT

Let Lacombe County know you're planning to run. Here's what you need to know:

- Fill out Form 3A – Notice of Intent.
- Submit before September 2025.
- Available online or at the County Office.

## GET NOMINATED

Make sure you're eligible to run:

- Be 18+ and a Canadian Citizen on Nomination Day.
- Live in Alberta for 6+ months prior to Nomination Day.
- Live in Lacombe County, within the Division you intend to run in, for 6+ months prior to Nomination Day.

Have your Nomination Form filed IN PERSON to the County Office by NOON on September 22, 2025. It needs to have the signatures of five (5) eligible voters from your division on it.



## GET READY FOR ELECTION DAY

Promote your campaign and track your donations/spending.

Attend information sessions or webinars to help your prepare.

## MAKE A DIFFERENCE IN YOUR COMMUNITY!

RUN FOR COUNCIL IN 2025

Information, resources and forms available at [www.lacombecounty.com/Election](http://www.lacombecounty.com/Election)

Questions? Please email the Returning Officer: [returningofficer@lacombecounty.com](mailto:returningofficer@lacombecounty.com)



## 2025 RMA POST-SECONDARY SCHOLARSHIP

Registration Deadline: August 29, 2025

The RMA established the RMA Post-Secondary Scholarship Program in 1995. A scholarship in the amount of \$1,000 is presented to one successful applicant from each of the RMA's five districts annually.

[Learn More](#)



[www.rmalberta.com](http://www.rmalberta.com)



## Rail Safety Tips

Talk to your family about crossing railway tracks safely. Follow these tips to keep your family safe!

### STOP AT ALL RAILWAY CROSSINGS

When approaching a railway crossing, slow down and be prepared to stop.

### LOOK BOTH WAYS FOR TRAINS

At passive crossings, there are no lights or bells to warn you of approaching trains, be extra careful.

### LISTEN CAREFULLY FOR TRAINS

If you're in a loud machine, open your window or door to better hear approaching trains.



## FIRE PERMIT SEASON

is March 1 - October 31

Do you have a Fire Permit?  
**SUBMIT IT ONLINE BEFORE BURNING!**



mobile requests through the website



online Fire Permit Request



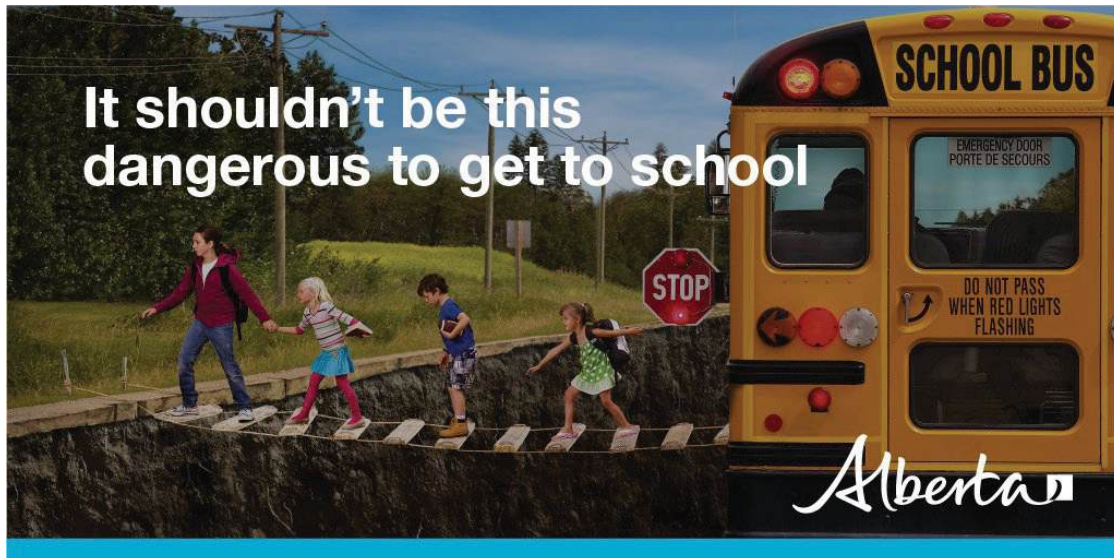
call into the office at 403-782-6601



Fire permits can also be requested in person at our office.



# SAFETY FIRST



It shouldn't be this dangerous to get to school

Students across the province will be heading back to school in a few weeks. Lacombe County reminds drivers of a few safety tips which will make the return to school a safe one for everyone!

- Be on the lookout for children and students walking to school as you pull out or back out of your garage and driveway.
- Be alert and mindful that during dim mornings or dark evenings, it can be difficult to see pedestrians.
- **Remember, it is illegal to pass a school bus when its red lights are flashing red. Drivers on both sides of the road must remain stopped until the flashing red lights are turned off.**
- Drivers need to slow down in school zones and be particularly alert for students during school hours, especially when dropping off and picking up children from school.

## GRAIN BIN SAFETY

Most grain bin entrapment and engulfment incidents happen during unloading. Flowing grain acts like quicksand, leading to potential entrapment and suffocation.

### GRAIN ENGULFMENT HAPPENS VERY QUICKLY.

In just four or five seconds, an adult can sink hip-deep in flowing grain and cannot free themselves without help. Entrapment and engulfment also happen when farmers fall through encrusted grain or have encrusted grain fall on them. Most victims do not survive engulfment.

#### PROPER ENTRY AND PREVENTION

Keep grain in good condition to eliminate the need for grain bin entry. Avoid grain entrapment by staying out of grain bins.

If staying out of the bin is not possible, follow safety measures and preplan entry procedures:



Develop safe work procedures that cover confined spaces, lockout tagout, and personal protective equipment (PPE).



Plan for the entry and for potential emergency situations.



Never work alone. Always work with a spotter who does not enter the bin and is trained in emergency response procedures.

#### EMERGENCY PROCEDURES

In the event of a grain entrapment:



Stop the flow of grain by powering down equipment (augers, chutes, etc.).



Call 911 (or direct local emergency number).



DO NOT attempt to rescue an entrapped victim.



Lock out powered-down equipment.



Monitor and reassure the victim that help is on the way.



Have someone wait for help to arrive and direct them to the victim.

Every farm should have an emergency response plan in place before an emergency occurs. This includes first-aid training, equipment, duties and roles and communication during any emergency on the farm, including grain entrapment.

TOP CROP  
MANAGER

CASA | ACSA  
CANADIAN AGRICULTURAL SAFETY ASSOCIATION  
ASSOCIATION CANADIENNE DE SECURITE AGRICOLE

Prepared by Top Crop Manager with assistance from the Canadian Agricultural Safety Association.

Icons made by: freepik.com

## RCMP AND RURAL CRIME WATCH BBQ

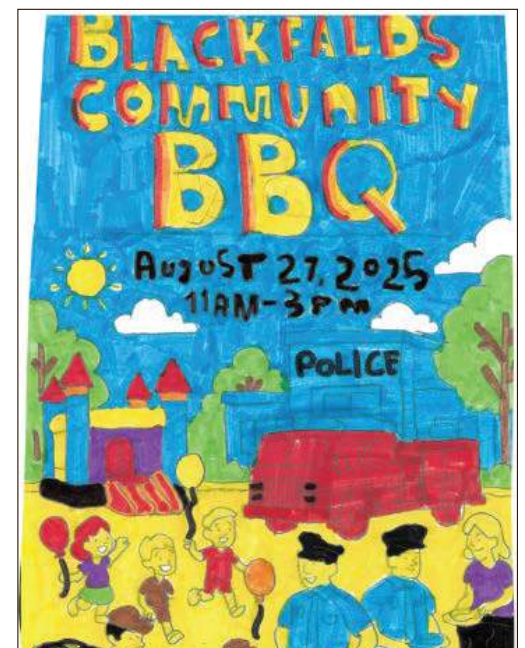
Blackfalds RCMP Detachment is hosting their annual Community BBQ in conjunction with Rural Crime Watch. Please feel welcome to attend to interact with Detachment officers and personnel, have a hotdog/burger, and learn about other partnerships and units we work with.

**When:** Wednesday August 27th, 2025  
11:00 a.m. until 3:00 p.m.

**Where:** Blackfalds RCMP Detachment  
4405 South Street, Blackfalds Alberta

In attendance is scheduled to include:

- "YIELD", the RCMP Youth Initiative and Education in Lifestyles and Driving bringing modified racing patrol cars.
- Police Dog Services
- Community Peace Officers
- Tow trucks
- STARS ambulance
- RCMP Air Services





# MIRROR CORNER



## SERVICES AVAILABLE TO MIRROR

### WAYS TO ACCESS:

1. Stop in to the Mirror Community Library for a referral
  2. CONTACT IN PERSON or BY PHONE EITHER
    - Alix and Area Community Resource Centre
- OR
- Bashaw & Area Community Resource Centre

#### All Ages

Print/ Copy/ Fax & Technology Services  
Community Services and Events  
Volunteer Services  
Wellness Services

#### Child, Youth & Family

School Setting Supports  
Youth Summer Programs  
Afterschool Program

#### Senior & Adult

Seniors In-Home Supports  
Seniors Outreach Workers  
Transportation to Medical Appointments  
Adult Education and Career Planning

#### Social Services

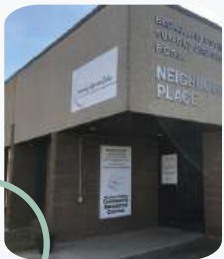
Food Hampers  
Information & Form Support  
Assistance in Navigating Systems and Accessing Services  
Meals on Wheels

#### In Alix:

FREE Weekly Veggies  
Puzzle Exchange

#### In Bashaw:

Medical Clinic  
NOW OPEN!



Bay 1 & 2, 5008 50 Ave,  
Alix AB  
403-396-3369



4909 50 Street,  
Bashaw, AB  
780-372-4074

#### Mirror Dog Tags

A license is required for all dogs in Mirror **\*\*NEW\*\***  
Lacombe County has introduced a more flexible dog-tag licensing system for residents of Mirror. Any new licenses issued will be valid for the lifetime of the dog. Existing licenses will remain valid until renewal, at which point dog owners must obtain a lifetime tag under the new structure.

#### Lifetime license fees:

- \$25 – Dog that is both altered and microchipped
- \$75 – Dog that is either altered or microchipped
- \$150 – Dog that is unaltered and not microchipped
- \$15 – Replacement dog tag

If you receive a violation notice under the Dog Control Bylaw, you can pay it within 30 days to receive a 50% discount; after that period, the full penalty applies.

To order your new tag or view full bylaw details, visit [lacombecounty.com/dogcontrol](http://lacombecounty.com/dogcontrol) or call 403-782-8959.

Lacombe County will issue a tag for each dog, which must be attached to a collar worn by the dog at all times. Lacombe County Enforcement Officers will do checks to ensure compliance.

If you would like to report a contravention of the Dog Control Bylaw, please call 403-506-9380, or email [info@klassickennels.com](mailto:info@klassickennels.com). **\*\*For animal welfare issues please contact the Alberta SPCA at <http://www.albertaspca.org/>\*\***

#### Jolly Seniors

Pancake breakfast every second Sunday from 9 a.m.-12 p.m.

#### Booking Mirror Community Hall

Call Lisa 403-788-3890 or call Mike Carr 403-788-3778 (Home) or 403-357-8239 (Cell) for hall information.

#### Mirror and District Museum

Contact [mmuseum@ccwireless.ca](mailto:mmuseum@ccwireless.ca) if you would like to volunteer and for hours of operation

#### Friends of the Mirror Library Society/Mirror Library

The Mirror Library would like to remind patrons of the many items available for borrowing. We carry books for everyone, audio books, DVDs, games, and puzzles.

**Hours:** Wednesday 1-5 PM  
2nd & 4th Saturday 11 AM - 3 PM

Please like us at: [facebook.com/booksinmirror](https://facebook.com/booksinmirror) for the most up to date information. The Library also has meeting spaces for rent and free Wi-Fi. Please contact us through the Facebook page or email [booksinmirror@gmail.com](mailto:booksinmirror@gmail.com).

#### Mirror Royal Canadian Legion Branch 189 - 5015 50th Avenue

Meat Draws Saturday at 4 p.m. General meetings second Sunday at 1 p.m. (unless otherwise posted).

#### CN Rail crossing delays

If you experience delays longer than 20 minutes at the Mirror rail yard crossing, call CN Rail at 1-800-465-9239. Follow the prompts and be ready to provide details shown on the crossing signal mast to CN personnel. Transport Canada may be reached at 1-888-463-0521.





# OPERATIONS

## CONSTRUCTION SEASON REMINDER

Please drive carefully around construction crews and obey ALL signs and speed limits during construction. If you have questions or concerns regarding any project, please contact the Operations department at 403-782-8379.

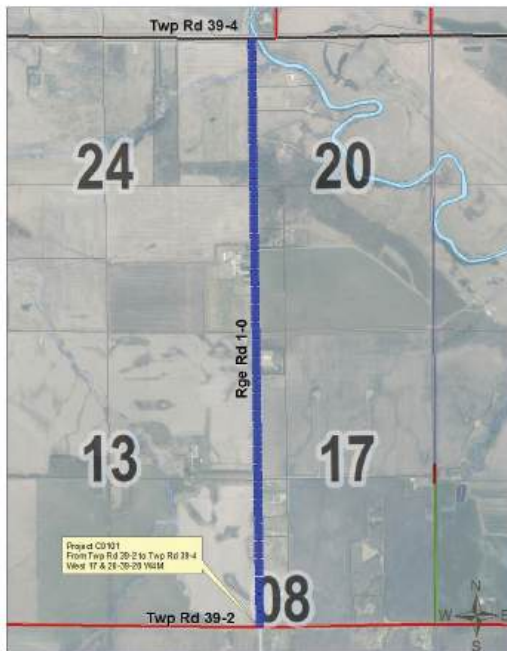
All notifications and maps can be found at [lacombecounty.com](http://lacombecounty.com) under Construction Notifications (in Quick Links).

## NOTICE OF ONGOING ROAD CONSTRUCTION PROJECTS

Lacombe County is notifying residents of an upcoming road construction projects:

- Starting on July 28, 2025 on Range Road 1-0 (West 17 & 20-39-28 W4 from Twp Rd 39-2 to Twp Rd 39-4). Construction will start Monday, July 28, 2025 and is expected to take +/- 5 weeks to complete (weather permitting). Minor delays may occur.
- Starting on July 23, 2025 on Range Road 3-1 (West 13 & 24-41-3 W5 from Twp Rd 41-2 north for 1.25 miles). Construction will start Wednesday, July 25, 2025 and is expected to take +/- 4 weeks to complete (weather permitting). Minor delays may occur.

Please drive with caution around construction crews, and obey all signs.



## NOTICE OF CONSTRUCTION COMPLETION

Pursuant to Municipal Government Act M-26.1 534(1) Lacombe County hereby provides notice to any person having an interest in land that is adjacent to lands which Lacombe County has constructed a public road. Persons entitled to compensation from the municipality for loss of or the permanent lessening of use of that person's land caused by the public work are advised to make a claim within 60 days after this notice is published.

The following road has been completed as of August 7, 2025:

Project Number	Description
C2623	Rge Rd 26-2 West 2 & 11-39-26 W4M from Highway 597 to Township Road 39-0

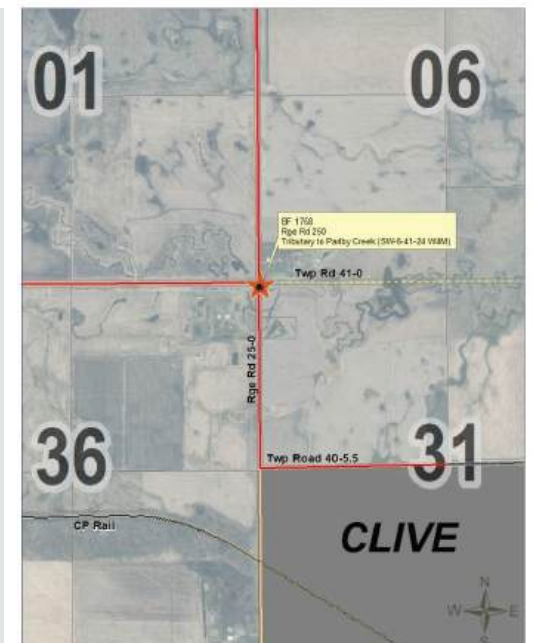


## NOTICE OF ROAD CLOSURE & DETOUR FOR BRIDGE CONSTRUCTION

Lacombe County will begin bridge replacement work on Bridge File 1758, located at SW 6-41-24 W4M (tributary to Parby Creek), starting July 15, 2025. As part of this project, a section of Range Road 25-0 will be closed to through traffic and accessible to local traffic only. The road closure is necessary to safely complete the construction of the new bridge.

The project is expected to be completed by August 31, 2025, weather permitting. Detour routes will be clearly marked, and signage will be in place to guide motorists around the construction area. Lacombe County reminds all drivers to obey posted signage and use caution when travelling in the area.

A map of the project location (right) and detour route is included (left) for reference.



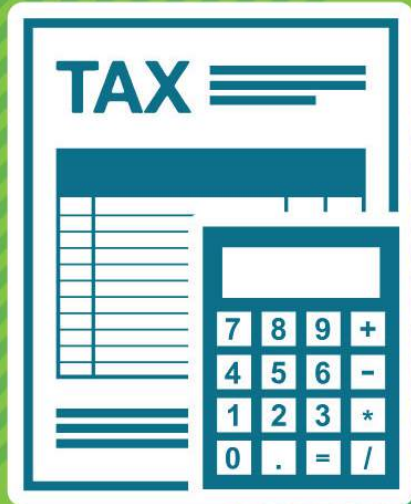




A FRIENDLY REMINDER

## TAX DEADLINE: AUG. 31

Combined property assessment and tax notices were mailed in early May. If you have NOT received yours, please contact Lacombe County at 403-782-6601.



Pay your property taxes BY AUGUST 31, and avoid any late tax penalties!  
Learn more at [www.lacombecounty.com/taxes](http://www.lacombecounty.com/taxes).

## HELP US FIND THESE RATEPAYERS:

Lacombe County is working to contact these individuals to ensure delivery of their 2025 Tax Notices.

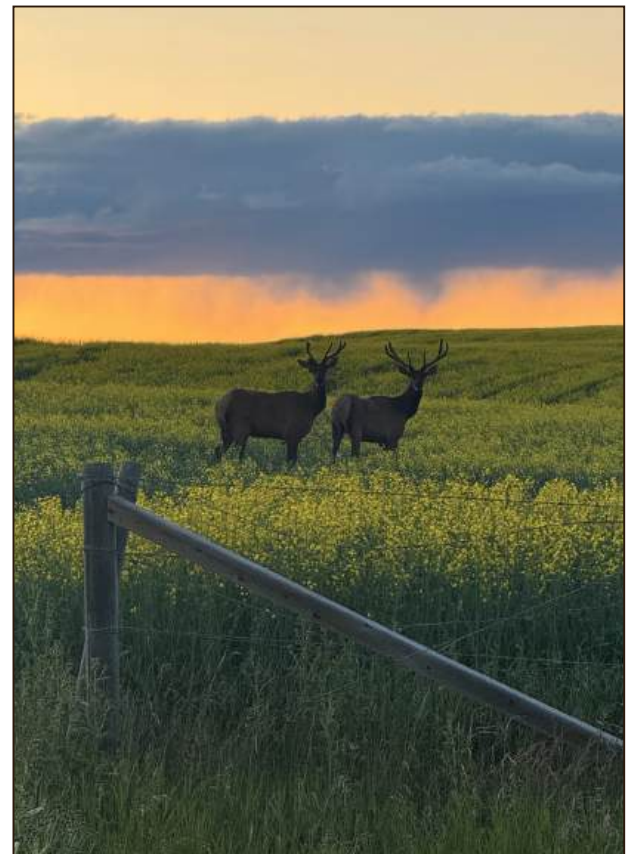
Bartholomow Briscoe  
William & Kendra Cleveland-Iliffe  
Corey Dahl  
Daniel Dumont & Ashley Russell  
Colder Fossen  
Stephen & Cindy Gillespie  
Derek Hogenson & Jacqueline Wiun  
Jason & Regan Kelts  
Todd Lyle  
Todd & Linsey McBride  
Helen & Terrance McAuley  
Jordan Miller  
Jonathan & Kyla Sigurdson  
Denise Speed  
Glen & Victoria Spycher  
Cuong The Tran  
Jeffrey Young  
Barry & Kelly Yungblut

If you know any of these people, please have them contact Brenda Stewart, Tax Clerk, at [bstewart@lacombecounty.com](mailto:bstewart@lacombecounty.com), or call 403-782-6601.

## \*\*NEW\*\* NO DOGS ALLOWED ON SANDY POINT BEACH

To keep Sandy Point Beach clean, safe, and enjoyable for all, dogs are no longer permitted on the beach (leashed or not). This does not apply to service dogs.

Dogs are still welcome on nearby trails, green spaces, and in the parking lot.  
Please pick up after your pets.



**PHOTO SUBMISSION:** Thanks to Brad Hellofs, who took this beautiful photo of two large deer in a canola field last month.

Brad came across them while travelling to Gull Lake (on Township Road 41-2 close to Range Road 27-0).



# ENVIRONMENT

## Lacombe County Environmental Stewardship Award now open

Over the past four years, Lacombe County has shone a light on remarkable individuals and groups with the Environmental Stewardship Award, celebrating their dedication to ecological conservation on their properties within the county.

This award is open to individuals and community non-government organizations as well.

### Nomination Process:

- **Open Period:** July 15, 2025, to September 30, 2025.

- **How to Nominate:** Submit nominations in person or via email to [jnakonechny@lacombecounty.com](mailto:jnakonechny@lacombecounty.com). Include full contact information of the nominee and a detailed description of their environmental efforts.
- **Eligibility:**
  - Must be a resident/organization in Lacombe County.
  - Recipient can only win once.
  - Nominations must be submitted by September 30, 2025.

- Forms available at [www.lacombecounty.com/EnvironmentalAward](http://www.lacombecounty.com/EnvironmentalAward).

- **Award:** A one-time cash prize of \$1,500 will be awarded, recognizing significant contributions to environmental stewardship.

### About the Environmental Stewardship Award:

The Environmental Stewardship Award is part of Lacombe County's commitment to environmental sustainability. In 2021, the Environmental Community Engagement Program was launched, encompassing educational and sustainability initiatives. This program was extended by the Council in 2023 due to its success.

### Past Winners:

- **2024: Nick Harper** – Restoration and preservation, including reforestation (150 native trees planted), pond restoration, and implementing sustainable grazing practices.
- **2023: Ward Nelson** - Notable for planting over 2000 trees and implementing solar-powered livestock watering systems.
- **2022: Joan Olafson** - Continued stewardship of 80 acres encompassing wetlands, forest, and streams.
- **2021: Sharon and Rick Wiebe** - Developed a community garden, off-site watering systems, and other sustainable projects.

### More details available at

[www.lacombecounty.com/EnvironmentalAward](http://www.lacombecounty.com/EnvironmentalAward)

The graphic features a dark background with a green plant sprout. Below it, a green banner reads "Environmental Sustainability Award - NOMINATIONS OPEN!". At the bottom, three green circular icons are arranged horizontally, each with a white plant sprout. Below each icon is a section header and text:

- Nominations OPEN**  
July 15 - September 30
- How to Nominate?**  
Fill out the form (located on our website). Submit in person or email [jnakonechny@lacombecounty.com](mailto:jnakonechny@lacombecounty.com)
- Criteria**  
Resident OR organization in Lacombe County.  
Can only win ONCE.

## REMINDER: Winter Storage permits required on reserve lands

The storage of select, seasonal items, may be authorized on County reserve lands from September long weekend (Sept.5/25) to May long weekend (May 18/26). Winter storage may proceed in locations where the integrity of the environment is not compromised.

Items approved for storage must have a unique identifier affixed or the item(s) may be removed. The storage of ice fishing huts and storage sheds will not be permitted. Stored items without County registration may be removed and disposed of at the County's sole discretion.

Applications must be submitted on an annual basis for the storage of items through the following application: <https://www.lacombecounty.com/en/living-here/special-use-of-reserves.aspx>.

Calls or questions may be directed to Jordan at [jnakonechny@lacombecounty.com](mailto:jnakonechny@lacombecounty.com) or 403-782-8959.



## NOTICE:

### RESERVE LAND INSPECTIONS

#### September & October

Lacombe County staff will be conducting inspections of reserve lands throughout the County in the months of September and October.

Inspections are completed to ensure the use and management of County reserves remains consistent with [Policy RC\(8\): Use and Management of County Reserve Lands](#).



# AGRICULTURE

## FOR RENT

### Pasture Sprayers

Lacombe County Agriculture Services Has  
Pasture Sprayers for County Residents to Rent



**RENTAL RATE - \$50.00/DAY**

**DEPOSIT - \$200.00** (deposit refundable when sprayer returned in good condition)

- ❖ Pull type - 400 gallon water capacity, 20 gallon/acre coverage
- ❖ Designed for spraying range and pasture in rough terrain
- ❖ Has additional hand gun system and fence line spraying nozzle
- ❖ Simple to operate
- ❖ Can be pulled by trucks OR tractors



## GRAZING ACROSS CONTINENTS

ARBUTUS COMMUNITY HALL

10AM-4PM

AUGUST 23, 2025

Join CAFLA, Regenerative Alberta Living Lab, and 4 Clover Ranch for a day of shared learning with a visiting delegation of Australian grazers in Clearwater County at Arbutus Hall with presentations and peer discussion focused on region-specific adaptations of regenerative grazing. It's a unique opportunity to connect with local and international producers, exchange practical insights, and explore diverse approaches to building more resilient grazing systems.

After lunch, participants will head to 4 Clover Ranch, where hosts Kim and Helen Nielsen will lead a field tour highlighting the outcomes of their regenerative grazing practices. From pasture planning to soil health results, the tour offers a hands-on look at these principles in action.

Lunch is \$20 and an optional informal BBQ supper (bring a lawn chair!) will follow the tour for those who'd like to continue the conversation.

Supported by  
**RDAR**



cafla-ab.ca or  
call 403-844-2645  
to register



ATTENTION COUNTY RESIDENTS:

## MOWING PROGRAM

Please be mindful of what is left in the county ditches and move debris completely away or into the fence line. This will help prevent damage to the mowing equipment.

### THESE ITEMS COULD INCLUDE:

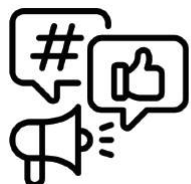
- ✓ Fence Wire
- ✓ Telephone Wire
- ✓ Large Rocks
- ✓ Posts
- ✓ Any material that may cause damage

THANK YOU!

www.lacombecounty.com  
403-782-8959



LACOMBE  
COUNTY



Find Lacombe County online



/LacombeCounty



@lacombecounty



Lacombe County



/LacombeCounty



lacombecounty.com

## GET A GLIMPSE OF FARM LIFE AT ALBERTA OPEN FARM DAYS

PROVINCE WIDE, AUGUST 16 & 17, 2025

Learn more about participating  
locations & plan your Open  
Farm Days events by scanning  
this QR code or visiting:

**albertaopenfarmdays.ca**



DISCOVER. TASTE. LEARN



# Managing beaver damage to County infrastructure

Beavers are an important part of Alberta's landscape. Known as "nature's engineers," they create wetlands that benefit wildlife, improve water quality, and enhance biodiversity. However, their dam-building habits can sometimes conflict with human needs—particularly when it comes to protecting roads, culverts, and drainage systems.

Lacombe County recognizes both the ecological value of beavers and the potential damage they can cause to municipal infrastructure. That's why the County has a Beaver Flood Control Policy to address situations where beaver activity threatens public infrastructure.

## When the County Will Step In

The County will take action when beaver activity has, or may have, a detrimental effect on County roads or associated drainage works. This may involve:

- Trapping beavers
- Unplugging culverts and bridges

All work is carried out in accordance with Alberta trapping regulations and provincial safety laws, particularly when explosives are used.

## Beavers on Private Land

Sometimes, beaver activity on private land can cause flooding or other issues on nearby County roads. In those cases, the County will only undertake beaver control with written permission from the landowner or occupant.

If beaver activity is affecting only private property and not County infrastructure, the County will not intervene directly. However, residents can contact Agricultural Services for advice or referrals to licensed trappers.

## Working Together to Manage Beaver Impacts

By working with landowners, Lacombe County aims to strike a balance—protecting public infrastructure while respecting the role beavers play in the local environment. If you notice beaver activity that is causing, or could cause, damage to County roads or drainage systems, please report it to the County Office or speak to a member of our Agricultural Services team at 403-782-8959.



# The importance of fall weed control

There is still time left to control those problem weeds you've been struggling with all summer. Fall presents an excellent time of year to make progress on removing stubborn perennial weeds – especially Canada thistle or pesky dandelions.

With the cooler fall season temperatures coming in, grass finally has a chance to recover from the heat stress of summer. You can encourage good grass competition during this time, which in turn will help choke out any lingering weeds. Fertilizing, aerating, top dressing, reseeding, and proper mowing height can help a lawn setting. With pastures, rotational grazing, proper stocking rates, seeding/overseeding, and nutrient adjustments contribute to a good healthy grass stand. Essentially, any activity that can help encourage your grass to build up a healthy root reserve of nutrients to last it through the winter and

to be well prepared for spring weather.

Another thing to keep in mind as you might be deadheading, pruning or removing built up dead or dying material, is the proper disposal of yard waste. Whether it be weed flowers or seed heads, diseased branches and leaves, or just general plant material, be mindful of how and where you might be transporting these undesirables, as they can cause issues if they aren't dealt with properly.

Lastly, a fall herbicide application can be an extremely effective technique for resolving perennial weed concerns before they become a problem next growing season. Make sure to use a registered, selective herbicide for best results.

If you have any questions, please call the Lacombe County Agriculture department at 403.782.8959.



# Changes to the Agricultural Container Recycling Program



## Agricultural Container Recycling

Effective January 1st, 2025, Lacombe Regional Waste Services Commission no longer accepts the <23L agricultural containers (Eckville, Alix/Mirror, and Prentiss). Retailers in Lacombe County that will take your agricultural pesticide and fertilizer containers for recycling are:

- **Central AB Co-op – Lacombe** 3407-52 Ave Ph:403-782-2232 (Seed & Pest. Bags, Tote Bags, Ag Containers <23L, Totes and Drums)
- **Richardson Pioneer** – East of Lacombe on Hwy 12 & Range Road 261 Ph:403-782-3033 (Seed & Pest. Bags, Ag Containers <23L, Tote Bags, Totes and Drums)
- **Nutrien Ag Solutions – Bentley** 4801-52 Street Ph:403-748-3991 (Seed & Pest. Bags, Tote Bags, Ag Containers <23L, Totes and Drums)
- **Central AB Co-op – Eckville** 4828-50 Ave Ph:403-746-2011 (Seed and Pest. Bags, Tote Bags, Totes and Drums, Ag Containers <23L)
- **Parrish & Heimbecker – Joffre** Hwy Junction 815 & 597

Ph:403-588-7200

(Seed & Pest. Bags, Tote Bags, Ag Containers <23L, Totes and Drums)

## LRWSC does not accept Agricultural Seed & Pest. Bags, Tote Bags, and Totes & Drums.

If your retailer will not accept your containers, please call one of the above listed retailers to inquire about accepting them for recycling.

Large volumes of empty <23L agricultural containers (>25 bags) can be arranged for on farm pickup by calling Clean Farms at 877-622-4460.

For further information, contact your agricultural chemical retailer or LRWSC @ (403)782-8970.



# SUBDIVISION & DEVELOPMENT ACTIVITY

**July 1, 2025 to July 31, 2025**

**Development Applications Received**

No.	File No.	Applicant	Legal Description	Proposed Development	Decision (otherwise pending)
1	87/25	Julie Elgert	Lot E Plan 3228NY (SW 03-39-03-W5M)	Home Based Business, Minor <i>Integrity Oilfield, Renewal</i>	Approved
2	88/25	Haley Very	Unit 153 Condo Plan 232 0356 (DeGraff's RVR Resort)	240ft² Shed	Approved
3	89/25	Alexander & Irma Scheling	Lot 5A Block 1 Plan 932 2880 (Pt. SW 15-41-26-W4M)	Dwelling, Single Detached w/garage, covered deck and detached garage	Approved
4	90/25	Dan & Janice Ferguson	Unit 69 Condo Plan 102 2165 (DeGraff's RV Resort)	240ft² Shed	Approved
5	91/25	James & Kristie Singer	Unit 28 Condo Plan 142 2139 (Sandy Point RV Resort)	Park model and replacement 240ft² shed	Approved
6	92/25	The Catholic Archdiocese of Edmonton	Pt. SW 13-41-01-W5M	Sea-can	Approved
7	93/25	Jacob & Melanie Schellenberg	Lot 19 Block A Plan 5600MC (Wilson's Beach, Gull Lake)	624ft² Detached Garage	Approved
8	94/25	David Gillespie	Lot B Plan 5864KS (Blackstone Estates)	Home Based Business, Major <i>D &amp; L Enterprises, Renewal</i>	
9	95/25	Kelsey & Rebecca Russell	Lots 10 & 11 Plan 1970EO (Brownlow's Landing, Gull Lake)	Cabin/Shop New Dwelling	Approved
10	96/25	Camdon Construction Ltd.	Lot 1 Block 2 Plan 972 3097 & Lot 2 Block 2 Plan 972 3097 (Burbank Industrial)	Chemical Storage and Blending Company with Admin Office known as Novamen	
11	97/25	Zivile Griskuniene	Unit 222 Condo Plan 142 2139 (Sandy Point RV Resort)	240ft² Shed	Approved
12	98/25	Neil & Lori Henderson	Lot 3 Block 2 Plan 042 3877 (Silver Springs, Sylvan Lake)	Tourist Home <i>Renewal, No Changes</i>	Approved
13	99/25	Neil & Lori Henderson	Lot 3 Block 2 Plan 042 3877 (Silver Springs, Sylvan Lake)	Home Based Business, Major <i>Rocky Mountain Design &amp; Landscaping &amp; Henderson Construction, Renewal</i>	Approved
14	100/25	Downton & Co.	OT: 12-40-27-W4M (Boundary Adjustment Pending)	Dwelling, First w/attached garage and covered deck	Approved
15	101/25	Aggregate Design Studio	Lot 10 Block 6 Plan 192 3350 (North Aspelund Industrial Park)	Setback Relaxation <i>Craneway, New Build</i>	
16	102/25	John Kerr	Lot 11 Block A Plan 5600MC (Wilson's Beach, Gull Lake)	Setback Relaxation <i>Existing shed on skids</i>	Approved
17	103/25	Ian Wierenga	Lot 1 Block 1 Plan 182 1829 (Pt. NW 31-39-25-W4M)	Home Based Business, Major <i>Used Car Dealership</i>	
18	104/25	Cheryl Kalev	NE 17-40-03-W5M	Dwelling, First	Approved

**Do you have  
questions about  
subdivision or  
development  
activity?**

**Contact Us:**

**Lacombe County  
Planning Services**

(403) 782-8389  
planning@  
lacombecounty.com

**Dale Freitag**

Director of  
Planning Services

**Cajun Paradis**

Manager of  
Planning Services

**Nicklas Baran**

Planner /  
Development  
Officer

**Will Cebuliak**

Planning Intern

**Kerrie Taylor**

Economic  
Development  
Officer

**Allison Noonan**

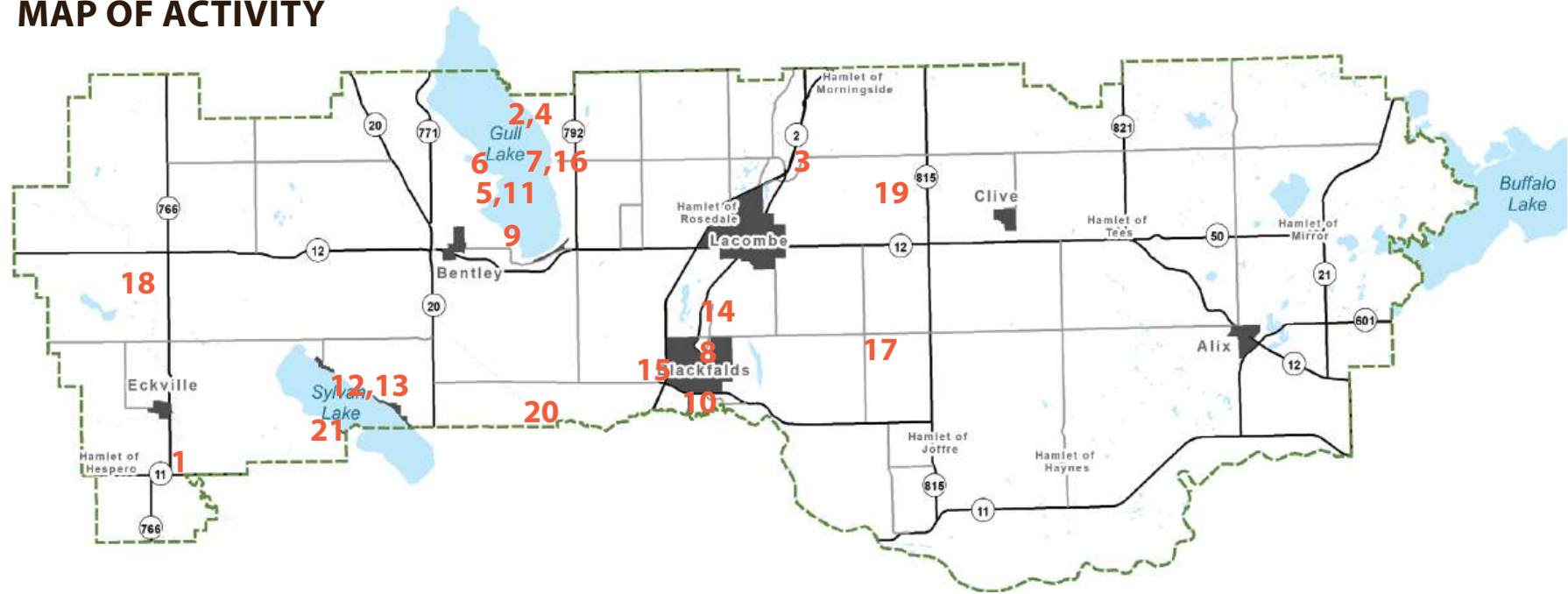
Planning Services  
Administrative  
Assistant

**Daniella Gonzalez**

Planning Services  
Receptionist



MAP OF ACTIVITY



Subdivision Applications Received

No.	File No.	Applicant	Legal Description	Proposed Subdivision	Decision (otherwise pending)
19	S-021-25	Michael Peterson Patricia Peterson	NE 32-40-25-W4M	Fragmented	Approved
20	S-022-25	Joshua Billett	Pt. SW 16-39-28-W4M	Fragmented	
21	S-023-25	Snell & Oslund Surveys Ltd.	E 1/2 SE 15-39-02-W4M	Boundary Adjustment	



Fresh New Look for the Trans Canada Trail!

Lacombe County has installed newly updated interpretive panels along the Blackfalds-Lacombe Connector section of the Trans Canada Trail!

These panels feature educational and informative content about the local area — including native plants and wildlife, surrounding natural features and ecosystems, and highlights from the nearby Lacombe Research and Development Centre.

Keep an eye out for them on your next walk, run, or ride — and take a moment

to learn more about the trail and its surroundings!

A big thank you to the Trans Canada Trail, who supported us to complete this initiative and the Lacombe Research and Development Centre for their collaboration in updating the information featured on their signs.

We're proud to continue improving the places where we connect, explore, and enjoy the outdoors.





# Planning Services

## FREQUENTLY ASKED QUESTIONS



YOU HAVE QUESTIONS

# Businesses in the Agricultural Area



WE HAVE ANSWERS

Thinking about starting a business from your rural property? You're not alone. Many of Lacombe County's most valued businesses are run right from home, offering services, trades, and products that support our rural way of life.

In Lacombe County's Agricultural 'A' District, residents have several options for operating businesses while continuing to enjoy the peace and space that comes with country living. Whether you're running a small online venture or a full-service trade business, there are opportunities available, but also some important regulations to understand.

### HOME-BASED BUSINESSES

Lacombe County supports entrepreneurship in the ag area by allowing both minor and major home-based businesses.

- **Minor Home-Based Business:** Best suited for low-impact operations. Think consulting, bookkeeping, or online sales. These businesses must operate entirely within your home or accessory building, with no outdoor storage, signage, or customer traffic. No development permit is required for this type of business, making it an easy way to get started.
- **Major Home-Based Business:** For larger operations involving customer visits,

outdoor storage, or up to two non-resident employees, a development permit is required. This allows you to scale up while still respecting the surrounding land use. Applications are reviewed by the County's Development Officer to ensure compatibility with the agricultural setting.

### MINOR BUSINESS OR TRADE

If you're planning something beyond the scope of a home-based business, such as a welding shop, equipment repair, or landscaping company, then a Minor Business or Trade use might apply. These businesses can employ up to six non-resident staff and typically require more space or infrastructure.

Because of the broader impact, these applications are reviewed by the Municipal Planning Commission (MPC), which considers factors like traffic, noise, dust control and the general fit of the business in the rural area.

### A DWELLING IS REQUIRED

One key requirement in the Ag District is that you must live on the same property where your business is located. This ensures that Lacombe County's agricultural area remains a residential, working rural community, where people live, work, and support one another locally.

### WE'RE HERE TO HELP

Starting a business in the Agricultural District isn't just allowed—it's encouraged, as long as it aligns with County regulations. Our Planning Services team is available to answer questions, help you navigate the Land Use Bylaw, and guide you through the permit process if one is needed.

Whether you're launching a part-time side hustle or a growing trade business, Lacombe County is committed to supporting rural entrepreneurs.

Some of the most valued and in-demand businesses in Lacombe County's ag area include farm service providers (mobile mechanics, custom spraying, fencing, livestock care), pet grooming and boarding, and minor trades like welding, carpentry, or equipment repair. There's also growing interest in agri-tourism ventures, such as farm tours, on-farm experiences, farm stays, and seasonal attractions like pumpkin patches or u-pick operations. These types of businesses not only support our agricultural producers but also help diversify rural income and bring visitors to the region. If you have an idea that supports rural living and the local economy, we'd love to talk to you.

**HAVE QUESTIONS?** Contact Lacombe County Planning Services at 403-782-8389 or [planning@lacombecounty.com](mailto:planning@lacombecounty.com).

## Installing a Rural Mailbox in Lacombe County: *What You Need to Know*

If you're planning to install or replace a rural mailbox in Lacombe County, it's important to follow Canada Post's standards to ensure safe and uninterrupted mail delivery. Proper placement, construction, and maintenance not only keep your mail secure but also protect delivery agents and motorists.

### CHOOSING YOUR MAILBOX

**Strength & Durability:** Select a mailbox that's strong enough to hold letters and parcels and is weatherproof.

#### Size Requirements:

- Rectangular mailboxes must have an opening at least 17.5 cm (7") wide and high, with a minimum interior length of 45 cm (18").
- Cylindrical mailboxes must have an opening at least 25 cm (10") in diameter and a minimum length of 45 cm (18").

**Door & Handle:** The door should be in the front, with a sturdy handle or flange, and must open easily and close securely.

### PLACEMENT GUIDELINES

**Height:** The bottom of the box should be between 107–114 cm (42–45") above the ground.

**Location:** Place the mailbox on the right-hand side of the road in the direction the delivery vehicle travels, ensuring the delivery agent can reach it without leaving their vehicle.

**Clearance:** Keep at least one car length of space on both sides so the vehicle can pull over, deliver the mail, and safely merge back into traffic.

**Safety First:** Avoid placing mailboxes in driveways, laneways, or near underground utilities—call your local utility locator before digging.

#### IDENTIFICATION

Clearly mark the civic address (or your full name if there's no civic address) on the right-hand side of the mailbox when facing it from the front. This information should be easily visible to the delivery agent as they approach.

#### CLUSTERING MAILBOXES

If you plan to group mailboxes together, you'll need approval from both the property owner and your local post office. Mailboxes in a cluster

must be the same height and in numerical order.

#### SIGNAL DEVICE

Canada Post uses signal devices to indicate when mail is ready for pickup, and residents can use them to show outgoing mail (with proper postage). The signal device should be on the right-hand side and clearly visible from a distance.

#### WINTER MAINTENANCE

Keep snow and ice cleared from around the mailbox to maintain delivery service.

Ensure the approach is firm, level, and free of obstacles like garbage bins or parked vehicles.

#### ONGOING MAINTENANCE

Mailbox owners are responsible for installation, repairs, and ensuring the box remains upright, secure, and rust-free. Damaged or inaccessible mailboxes may result in non-delivery.

By following these guidelines, you'll help ensure safe, reliable mail delivery for yourself and your community. For more information, contact your local post office or call Canada Post Customer Service at 1-800-267-1177.



# ECONOMIC DEVELOPMENT

## Workforce Development in Lacombe County: *Skilled Trades, Ag Labour, and the Power of Connection*

Finding and retaining skilled workers is a challenge that seems to be shared across industries. It seems Lacombe County's top industries of agriculture and construction are no exception. In Lacombe County, we know that a strong workforce is the foundation of a strong local economy, and we're committed to supporting our businesses in addressing labour needs.

While Lacombe County doesn't directly run apprenticeship or training programs, we play a key role in connecting the dots between local employers, workforce support organizations, and regional training opportunities. Whether you're looking for a qualified welder, seasonal farm labour, or someone willing to learn on the job, we may be able to help connect you with the right people or the right programs.

### What We're Seeing in the Region

According to the County's latest data on employment and economic indicators, key industries like agriculture, construction, and transportation continue to rely heavily on skilled trades. Across Alberta, the demand for tradespeople—including mechanics, electricians, heavy equipment operators, and welders—remains high. For ag producers, the need for both skilled and unskilled seasonal workers adds another layer of complexity.

Across Lacombe County and Central Alberta, workforce shortages remain one of the most

pressing challenges facing local employers. According to data from the Lacombe County Economic Indicators dashboard, the labour force participation rate is relatively strong, but key industries are still struggling to fill positions—especially in skilled trades and agriculture.

The construction, manufacturing, and transportation sectors are feeling the pressure of an aging workforce and declining apprenticeship enrolment. Demand continues to grow for heavy equipment operators, welders, millwrights, electricians, and Class 1 drivers. These are roles that are essential to both urban and rural development, but they often go unfilled due to a mismatch between where training is available and where jobs exist.

### What We're Seeing in Lacombe County's Data

As of December 2024, the total employment for all industries within Lacombe County stood at 33,810 jobs, a slight decrease of 570 jobs from the prior month but a net gain of 1,010 jobs year-over-year. The employment rate hovered around 65.1%, while the unemployment rate sat at a relatively low 5.4% ([data.lacombecounty.com](https://data.lacombecounty.com)). These figures reflect a reasonably robust local labour market.

The agriculture sector has seen dramatic growth—up approximately 1,700–2,200 jobs, a year-over-year increase of over 75% ([data.lacombecounty.com](https://data.lacombecounty.com)). That's encouraging for the

region's economy—but also a clear signal that businesses in farming, livestock, and agri-processing are grappling with finding enough labour, both seasonal and permanent.

While agriculture led the year-over-year growth, other goods-producing sectors like manufacturing and construction showed mixed trends. Manufacturing surged—up nearly 6,500 jobs (+106%)—though construction saw a downturn of around 3,100 jobs (–26%) ([data.lacombecounty.com](https://data.lacombecounty.com)). These swings suggest challenges in filling roles such as compact equipment mechanics, electricians, and heavy operators—especially in remote or smaller communities.

### How We Can Help

Lacombe County Economic Development works with businesses to:

- Identify workforce needs
- Share job opportunities through our business network
- Advocate for training and program development in areas where gaps exist
- Make connections with regional employment services, chambers of commerce, and industry groups

If your business is struggling to find or keep the right employees, reach out. Whether you're in agriculture, trades, manufacturing, or retail, we want to hear from you.

### Let's Keep Lacombe County Working

The strength of our economy depends on a resilient and responsive workforce. By working together, we can ensure Lacombe County remains a great place to live, work, and build a business.

**Contact Kerrie Taylor, Economic Development Officer, at 403-782-8389 or [economicdevelopment@lacombecounty.com](mailto:economicdevelopment@lacombecounty.com).**



## Business Survey

The Central Alberta Economic Resiliency Taskforce (CAERT)—a regional collaboration—is working to better understand and respond to economic challenges facing our business community.

**We invite you to take a few minutes to complete the Economic Resiliency Survey:** <https://www.surveymonkey.com/r/EconomicResiliency>

Your input will help CAERT:

- Assess current economic conditions in Central Alberta
- Identify emerging challenges facing businesses and communities
- Advocate more effectively at the regional, provincial, and national levels



**Deadline:** Friday, August 29, 2025, at 4:00 PM

**Participation is voluntary and responses are strictly confidential.**

**Together, we can build a stronger, more resilient Central Alberta.**



**To access Lacombe County Economic Development stats and information in this article**



# Register to vote to make your mark

→ [voterlink.ab.ca](https://voterlink.ab.ca)



Lacombe County is encouraging residents to register early for the October 20, 2025 municipal election. By confirming or updating your information at [voterlink.ab.ca](https://voterlink.ab.ca), you'll help create an accurate voters list and ensure a smoother voting process. Register today to make your vote count!

*you Can't Ignore*  
the **ZEBRA MUSSEL**

*a menace* to **WATER**  
**WATERWAYS**  
**ECONOMY**

**CLEAN, DRAIN, DRY** YOUR WATERCRAFT AND GEAR!  
LET'S KEEP ALBERTA INVASIVE MUSSEL FREE

LEARN MORE. [alberta.ca/CleanDrainDry](https://alberta.ca/CleanDrainDry)

Alberta



# BE RAIL SMART

STOP. LOOK. LISTEN.  
LIVE.

Trains are always much  
closer than they appear.  
Look, listen and be ready to stop.

## RAIL SAFETY TIPS

### 1 • SPEED MISPERCEPTION

Because of their size, trains appear to be much farther away and travelling much slower than their actual speed. Don't be fooled!

### 2 • TRAINS CAN'T STOP QUICKLY

The average train needs at least 2 km to stop. Trains can stop, but they can't stop quickly!

### 3 • TRESPASSING

Taking a shortcut across the tracks or being on railway property is illegal, and trespassers can be seriously injured or killed.

### 4 • WEIGHT RATIO

An average freight train weighs over 5,500 tonnes. Compare that to a car, which weighs about 1.5 tonnes. A train hitting a car is like a car hitting a pop can.

### 5 • RAILWAY CARS

Stopped railway cars can move at any time. If you're on one or near one when it moves, you could lose a limb — or worse, your life.

### 6 • TUNNELS AND BRIDGES

Tunnels, bridges, and trestles are designed only for trains. Trespassers can be seriously injured or killed.

### 7 • OVERHANG

Trains can carry loads that are wider than the railroad cars themselves. They can have chains, straps or other equipment that may extend outside the car. If you are standing too close, you could get hit.

### 8 • ANY TIME IS TRAIN TIME

Trains do not always run on schedule. They can run at any time, on any track and come from either direction.

### 9 • CN POLICE NUMBER

Together we can help save lives! If you witness any unsafe situation near a railroad, please call **1-800-465-9239**.

### 10 • SAFETY PLEDGE

Act today. Take the pledge at [mysafetypledge.com](https://mysafetypledge.com).

## RAIL SAFETY TIPS FOR FARMERS

### 1 • STAY ALERT WHERE FARM FIELDS CROSS TRACKS

Farm crossings often have no warning lights, bells, or signs. While stopped, look in each direction carefully for approaching trains, moving head and eyes to see around obstructions such as mirrors, windshield pillars and implements. When approaching a crossing, open your cab window, turn off radios and fans, remove headsets and listen carefully for oncoming trains.

### 2 • REMEMBER TRAINS CAN'T STOP QUICKLY

Because of their size, trains appear to be much farther away and travelling much slower than their actual speed. Don't be fooled. Stop safely and no closer than 5 metres from the nearest rail.

### 3 • KNOW YOUR EQUIPMENT

Some farm machinery isn't easily transported across tracks. Never try to cross with low-slung equipment — it could get lodged in the rails. Make sure there is enough room on the other side of the tracks to fully clear without stopping.

### 4 • SECURE TOWING EQUIPMENT

Secure hitch pins with a pin key to prevent towed machinery from dislodging over rough farm crossings. Watch wagons and other equipment while crossing to make sure nothing dislodges or falls onto the tracks.

### 5 • IF YOU GET STUCK, GET OUT

If you stall or get stuck on the tracks, get out of your vehicle immediately and move 30 metres away. Call CN Police or 911 and let them know a vehicle is on the tracks.

### 6 • CN POLICE NUMBER

Safety is a shared responsibility. If you witness any dangerous or unsafe situations near a railroad, please call **1-800-465-9239**.



# COUNCIL HIGHLIGHTS

July 10, 2025

## COMMITTEE OF THE WHOLE MEETING NOTES

The following recommendations from the Committee of the Whole meeting held on June 3, 2025, were approved by Council:

- That the presentations from the RCMP Detachment Commanders and Crime Watch Associations be received for information.
- That the Assessment Model Review presentation be received for information.

## RANGE ROAD 27-3 PAVING

The County Manager was directed to award the work to base pave Range Road 27-3 in the amount of \$621,410.00, to be funded from the Community Resource Reserve.

## BILL 50 – MUNICIPAL AFFAIRS STATUTES AMENDMENT ACT

Council received an update on the recent changes to the Municipal Government Act introduced through Bill 50.

## AUDITING SERVICES REQUEST FOR PROPOSAL

Council approved awarding the 2025-2027 auditing services contract to Metrix Group LLP.

## SOUTH SYLVAN LAKE AREA OFF-SITE LEVY BYLAW NO. 1442/25

Council received a presentation regarding the proposed off-site levy bylaw for the South Sylvan Lake Area. The off-site levy fund would apply only to new development areas that benefit from roadway and intersection improvements.

## HAMLET OF MIRROR AREA STRUCTURE PLAN TERMS OF REFERENCE

Council received a presentation on the proposed plans to update the Hamlet of Mirror Area Structure Plan, scheduled for completion in March 2027. Council endorsed the Terms of Reference for the project.

## BATTLE RIVER WATERSHED ALLIANCE PRESENTATION

Council received a presentation from Ms. Sarah Skinner of the Battle River Watershed Alliance.

## ALBERTA TRANSPORTATION & ECONOMIC CORRIDORS UPDATE PRESENTATION

Council received a presentation from Mr. Stuart Richardson and Ms. Niki Burkinshaw of Alberta Transportation and Economic Corridors.

## FIRE SERVICES AGREEMENT REVIEW MEETING NOTES

Council received, for information, the meeting notes from the Fire Services Agreement Review meeting, held on May 27, 2025, with participation from the Village of Alix, Town of Bentley, Village of Clive and Lacombe County.

# Time for Au-some August!

We here at the Ellis Nature Centre want to welcome you to our August events. As our season begins to wrap up, we want to invite you to our August events as we say good-bye to the birds, goats, and the summer season.

**Bug Jamboree** – Please join us for our Annual Bug Jamboree! A day dedicated to insects! We are excited to highlight insects as they are an essential part of our ecosystem and make up the diet for many of our insect eating birds! We will be hosting insect demonstrations and presentations paired with lawn games, raffles, and children's activities. This is an all-day event with most of the activities happening between 10am-4pm.

We have special guests like John Acorn AKA "The Nature Nut" who will be presenting on Fossil Insects while sharing their collection of butterflies, beetles, and more! You will be able to go on a bug hunt, a butterfly walk or check for aquatic invertebrates at our Wetland Centre.

We will also be highlighting our Citizen Science Pollinator Project where the participants will monitor a section of flowers and record what pollinator species visits the flower over the course of 10 minutes.

**Alberta Open Farm Days** – We are thrilled to be a Host Farm for Alberta Open Farm Days; this year's theme is Water: The life-blood of Every Farm. We will have a variety of activities celebrating water from how it supports sustainable agriculture to how it increases biodiversity. We will be hosting grazing demonstrations, presentations, and tours on both the 16th and the 17th of August. We hope to see you there!

**Harvest Dinner** – After a long-anticipated summer, our 4th Annual Harvest Dinner



Fundraising Gala is just around the corner and we couldn't be more excited! Join us for an evening to support the Lacombe Museum and Ellis Nature Centre, as we celebrate community, culture, and cuisine. This exclusive event will feature an exceptional farm-to-folk dining experience, crafted by Guest Chefs from Lacombe & District. Tickets are selling fast, So buy them while you still can!

**Goat Goodbye** – On August 30, join us for a fun-filled celebration to honour our furry friends for our Annual Goat Goodbye. What's happening? We will have a Goat Photo Booth where you can snap a selfie with our star goats, participate in a goat milking demonstration, try your luck and win great prizes in our Goat Bingo Raffle, and learn about our buzzing buddies as we are hosting honeybee program. We will also be hosting a wide range of lawn games that are fun for all ages! Bring your friends and family for a goat-loving experience!

**Kids Summers Programs** – A very big thank you goes out to everyone who signed up and took part in this year's Kids Summer Programs! We had an amazing time learning, exploring, and creating lasting memories together. It was a pleasure getting to know such an enthusiastic and curious group of kids.



CENTRAL ALBERTA REGIONAL  
**Assessment  
Review Board**

**New Members Needed  
Apply Today!**

## Are you interested in making fair decisions on property assessments?

The Central Alberta Regional Assessment Review Board is an impartial, independent board responsible for issuing evidence based decisions on complaints relative to property assessments.

### APPLY IF YOU HAVE

- experience serving on administrative boards or quasi-judicial boards
- professional or legal writing abilities and computer skills
- a flexible schedule, with availability during the day to attend training and hearings (about three days a month)
- an ability to organize and absorb large amounts of information then analyze and weigh evidence

### DEADLINE TO APPLY

**September 19, 2025**

**Apply online at  
[reddeer.ca/RARB](http://reddeer.ca/RARB)**

### QUESTIONS?

**403-356-8907  
[reddeer.ca/RARB](http://reddeer.ca/RARB)**

Council Highlights & Minutes can be found on our website at  
[www.lacombecounty.com/en/our-government/agendas-and-minutes.aspx](http://www.lacombecounty.com/en/our-government/agendas-and-minutes.aspx)





# Disposing Lithium Batteries DO NOT PLACE IN TRASH!



## THE RISKS OF IMPROPER LITHIUM BATTERY DISPOSAL

Improper disposal of lithium batteries poses significant risks to both human health and the environment. It is crucial to handle and dispose of these batteries correctly to avoid potential hazards and prevent environmental contamination.

## LITHIUM BATTERY FIRES

Lithium-ion batteries, if not disposed of properly, can be a fire hazard. LRWSC has had multiple landfill fires in the last six years because of improper battery disposal. These fires can have devastating effects on human lives, property, and the environment.

## LITHIUM BATTERY TOXICITY

Apart from the risk of fires, improper disposal of lithium batteries can also result in the release of toxic chemicals. Cobalt, manganese, and nickel are among the dangerous contaminants found in lithium-ion batteries. When these batteries end up in landfills, there is a real danger of these toxic substances seeping into the surrounding soil and groundwater, posing a threat to plant and animal life.

## LANDFILL CONTAMINATION

Lithium batteries that are thrown into landfills can cause significant environmental contamination. The leakage of hazardous metals such as cobalt, manganese, and nickel can pollute the soil and groundwater. This contamination not only harms the local ecosystem but also increases the risk of underground fires in landfills.

Proper disposal of lithium batteries is vital to mitigate these risks and protect our health and environment. By responsibly recycling these batteries, we can prevent fires,

reduce toxic chemical exposure, and prevent the contamination of our landfills.

## THE IMPORTANCE OF RECYCLING LITHIUM BATTERIES

Recycling lithium batteries is crucial for the environment and our future. By recycling these batteries, we can prevent the need for new mineral extraction, reducing the negative impact on our planet. This process helps conserve valuable resources and promotes a circular economy where materials are reused rather than discarded.

One of the significant benefits of battery recycling is the recovery of valuable metals and materials. Lithium batteries contain components like cobalt, nickel, and plastic, which can be extracted and reused through recycling. While not all parts of a lithium battery are recoverable, the majority can be recycled, contributing to the conservation of valuable resources.

Recycling lithium batteries also plays a crucial role in reducing the risks associated with improper disposal. Batteries that end up in landfills can pose threats to the environment and human health. They can leak toxic substances like cobalt, nickel, and manganese, polluting the soil and water sources. Recycling helps prevent these risks and ensures that batteries are disposed of safely.

## HOW TO RECYCLE LITHIUM BATTERIES PROPERLY

Properly recycling lithium batteries is essential to ensure their safe handling and disposal. To start, it's recommended to remove the battery from the device whenever possible. If the batteries are physically damaged, they should be stored in an insulated plastic bag to avoid any short-circuiting. It's important to keep lithium batteries in a cool and dry place to prevent combustion.

**LRWSC accepts all batteries at our sites for recycling, please ask the attendant where batteries can be safely placed.**

**Do NOT place batteries in the Rubble Bins or the Compactor Hopper.**

# Tarp your load – Keep Lacombe County clean and safe

When heading to one of Lacombe County's Waste Transfer Stations, please remember to tarp your load.

While there is no bylaw requiring tarping in Lacombe County, we strongly encourage all residents to secure and tarp their loads—not only as a courtesy to others, but to help keep our community clean and safe.

## WHY TARP YOUR LOAD?

**Prevent roadside litter:** Unsecured waste can easily blow out of vehicles, ending up in County ditches and fields, harming the en-

vironment and increasing cleanup costs.

**Protect other drivers:** Loose material falling off a vehicle can create serious hazards for others on the road.

We all have a role to play in preserving the beauty and safety of Lacombe County. Thank you for doing your part by securing your load.

**For more information about Waste Transfer Stations, visit:** <https://www.lrwsc.ca/>.

In case of emergency  
En cas d'urgence

call  
appelez le

**9-1-1**

To report non-emergency event  
Pour signaler une situation non urgente

call  
appelez le

**310-RCMP 7267**

Royal Canadian Mounted Police  
Gendarmerie royale du Canada

Canada

LACOMBE COUNTY

**STOP SIGNS AREN'T A SUGGESTION**

KEEP OUR ROADS SAFE FOR EVERYONE

# Update your Mailing Address!

If your address has changed, make sure to notify us. Call 403-782-6601 or email [info@lacombecounty.com](mailto:info@lacombecounty.com).

We also recommend updating the title of your property with Alberta Land Titles. You can obtain a form from us, by calling 780-427-2742, or online <https://www.alberta.ca/land-titles-overview.aspx> (under Change of address and name).





# ASSESSMENT 101 | *What you need to know*

## GRAVEL AND SAND PITS - DID YOU KNOW?

Gravel and sand pits often cycle through periods of activity including being dormant before they are reclaimed. If you own property with a gravel or sand pit that is intended for reclamation or has been reclaimed in the past year please contact an assessor so we can update your record to reflect the status of the pit. Please note, pits where the top soil have been stripped and not reclaimed will be assessed as non residential land area and improvements.

## DEADLINE FOR COMMUNITY ORGANIZATION (NOT-FOR-PROFIT) PROPERTY TAXATION EXEMPTION APPLICATIONS IS SEPTEMBER 30, 2025

In Alberta, some properties are exempt from property taxation. These

exemptions are outlined in the Municipal Government Act (MGA) and Regulations. Specifically, not-for-profit organizations may qualify for property taxation exemption in 2026 on their facilities if they have completed and returned an application package prior to SEPTEMBER 30, 2025.

Most of the Not-for-Profit Organizations applied and qualified for exemption 2025 to 2027 last year. If you are a not-for-profit organization who did not apply last year and believe you may qualify, please find the application forms on our website at: <https://www.lacombecounty.com/en/living-here/resources/Documents/Application-for-Property-Tax-Exemption-General.pdf>.

Application Waiver Form: <https://www.lacombecounty.com/en/living-here/resources/Documents/>

## [Lacombe-County-COPTER-waiver.pdf](#)

The requirements and process for a not-for-profit organization to qualify for property taxation exemption are set out by the Community Organization Property Tax Exemption Regulation (COPTER).

## 2025 PROPERTY INSPECTIONS

To ensure the accuracy of property assessments, Assessors re-inspect various properties throughout the municipality each year in Lacombe County. Assessors will inspect properties for various reasons, including cyclical updates, modernizations identified via development/safety code permits, ownership changes, changes identified in the most recent aerial photographs, reports/updates from other sources or public observations.

requested information about your property to the Assessor, he or she will note the property owner declined to provide information and use any information available to update the property details and prepare the assessment.

## NOTICE OF INSPECTIONS

Lacombe County municipal Assessors are continuously reviewing and visiting properties throughout the municipality as required to verify property information ensuring accurate and equitable assessments – we appreciate your cooperation with data collection activities. Our Assessors carry identification and will present it upon request. If you have questions or concerns, do not hesitate to contact us at the Lacombe County Administration Office.

## MEET THE TEAM

The Lacombe County Assessment team is made up of the following individuals:



**Angel Svennes**



**Andrew Beecraft**



**Nolan Bepalko**

## WHAT HAPPENS DURING AN INSPECTION?

During an in-person inspection an assessor may:

- physically collect/verify measurements of buildings and other structures,
- review improvement and property characteristics, such as type of construction, number of bathrooms, type of heating, basement finish, areas finished as office or warehouse, site improvements, updates or renovations, usage of the improvements/property, etc.
- confirm the circumstances of the sale/purchase of a property to determine if the transaction reflected a typical market value and could be used for comparison purposes.

## WHAT IF I CHOOSE NOT TO PROVIDE THE INFORMATION REQUESTED BY THE ASSESSOR?

To ensure efficient use of our resources Lacombe County Assessors do not schedule individual appointments. If you are not comfortable providing the

## PET OF THE MONTH - Meet Ayla

Several months ago, we had gotten a call about a sweet girl who showed up at a farmer's home with a rope around her neck and in horrific condition. We had no idea how she got this way, but we were not just going to leave her.

Her face was full of infection, and it was so bad she sadly lost one of her eyes, but this does not slow her down in the least! With lots of love and vet care, she is finally ready to find her forever home.

Ayla is 2 years old, spayed, vaccinated, microchipped and dewormed. She is one of the sweetest dogs you will ever meet! All she wants to do is be near you and give you kisses! And she loves other dog friends!

Ayla is an example of the true happiness that comes from being given a second chance at life.



## CALL FOR VOLUNTEERS!

Are you looking to make a difference in the lives of animals? We have lots of ways you can help:

- Volunteering for adoption events in your community: you get to hang out with adoptable puppies and sometimes kittens, in pet stores, dealerships, breweries or many other places, while they find their forever homes.
- Enriching animals at the shelter: Our animals are always looking for walks, play, attention, baths! Any way you can think to enrich, is always greatly appreciated.
- General Cleaning at the shelter: With all the animals we have, the place gets dirty! We are always looking for anyone willing to come out to the shelter and do some general cleaning! We've got piles of laundry with your name on it!

The heart of a volunteer is never measured in size, but by the depth of the commitment to make a difference in the lives of others. Please note, anyone under 16 must be accompanied by an adult. All volunteers must sign a waiver.

If you are interested in volunteering, please email [fundraising@savinggraceanimalsociety.com](mailto:fundraising@savinggraceanimalsociety.com).



# RESOURCES FOR SENIORS

## Home Support Services

**Reliable Housekeeping for Seniors**

**Trained & Screened Providers**

### Services Offered:

- Laundry
- Kitchen, Living room, Bathroom cleaning
- Dusting
- Mopping
- Vacuuming
- Meal prep assistance
- Weekly, bi-weekly, monthly
- Lacombe, Blackfalds, Bentley, Clive and Lacombe County



SUPPORTED BY:



Lacombe & District FCSS:  
403-782-6637

Bentley FCSS:  
403-748-2160

Clive FCSS:  
403-784-2020

**CALL NOW!**



**Did you know?**  
County residents within 20 km of Lacombe can book the bus for errands & medical appointments.

Please call 403-782-6637 for more information or to reserve your spot

## Seniors 55+ Wellness Mornings

**Special programming (no charge) on Mondays/Wednesdays**

- Mondays 9:45 arrive 10 to 11 am Seated Range of Motion
- Wednesdays 10:30 arrive 10:45 to 11:45 am Chair Yoga - light movements



Registration required for  
**Seated Range of Motion**  
**Chair Yoga**

Move your body, make connections & socialize!

Call 403.748.2160

**Bentley Seniors Drop In**



BENTLEY SENIORS DROP IN, FCSS/TOWN OF BENTLEY, EDMONTON SENIORS CENTRE



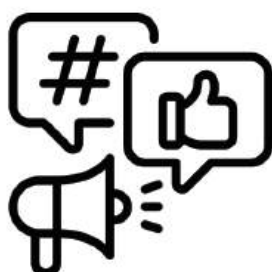
## Over The Hill & Loving The View

located in the Town Office 4918-50 Avenue

## The Seniors Drop In welcomes everyone 55+

- |             |       |                            |
|-------------|-------|----------------------------|
| • Tuesdays  | 1 pm  | Socialize/cards/games      |
| • Thursdays | 10 am | Socialize - Toast & Coffee |
| • Potluck   | noon  | Last Tuesday each month    |

Special Outings - dinner theatres and more.  
Have an idea? Let us know.



## Find Lacombe County online



/LacombeCounty



@lacombecounty



Lacombe County



/LacombeCounty



lacombecounty.com



# AROUND THE COUNTY



**Blackfalds' Servus Credit Union Public Library**



**Free memberships for Blackfalds & Lacombe County residents!**  
When signing up provide your legal land description.

**Programming**

**Baby & Toddler Time** *Ages 0-3*

**Music & Movement** *Ages 1-4*

**Lego Club** *Ages 5+*

**Reading Buddies** *Ages 6-13*

**Anime & Otaku Club** *Ages 8+*

**Card Club** *Ages 18+*

**Knitting & Crochet** *Ages 18+*

**Family Films** *All Ages*

*\*For more program info, check out our website & social medias*

**Hours**

Sunday	1 pm - 5 pm
Monday	10 am - 8 pm
Tuesday	10 am - 6 pm
Wednesday	10 am - 8 pm
Thursday	10 am - 6 pm
Friday	10 am - 6 pm
Saturday	10 am - 5 pm

**Contact**

403-885-2343

[www.blackfaldslibrary.ca](http://www.blackfaldslibrary.ca)

Eagle Builders Centre 5302 Broadway Avenue  
Blackfalds, AB T0M 0J0

**Borrowing**

Our library card gives you access to a variety of services, eResources such as eAudio, eBooks, eMagazines & more!

Visit us on our website & social medias



## Make a SPLASH

at the Kinsmen Aquatic Centre

5429 53rd Street

The Gary Moe Sportsplex is home to the Kinsmen Aquatic Centre (KAC). Come take a dip at the Kinsmen Aquatic Centre. We offer a climbing wall, small slide, rope and many special events throughout the year.

**What's happening at the pool:**

- We are hosting a Teen WIBIT swim sponsored by Mcman Family Resource Network on Friday, Aug 15th. Pizza from 7:30-9:00 p.m., and Swim is from 9:00-10:00 p.m. Register through [frnlacombe@mcmancentral.ca](mailto:frnlacombe@mcmancentral.ca)
- The Kinsmen Aquatic Centre will be closed Sept 2nd-Sep 14th for their annual maintenance shutdown.
- Fall program registration is open!!! Check out our new Sunday swim lesson options.

For more information on the KAC schedule, pool rentals and advanced courses call 403.782.1278 or visit [www.lacombe.ca/pool](http://www.lacombe.ca/pool).



**City of Lacombe**

**Alix and Area Community Resource Centre**



## LAUNCH A LEARNER

**Donate Now**

We are accepting donations and watch for collection bins, jars, placed around our community.

**Or Apply**

Contact us to apply if you are in need of school supplies and for more information.

# WHAT WE DO

**STOLLERY & ALBERTA CHILDREN'S HOSPITALS**



**TRAIN ACRES**  
Miniature Railway

**JOIN US FOR A FUN DAY OF RIDING MODEL TRAINS.**

**TRAIN ACRES MINIATURE RAILWAY**

39014 Range Rd 30 north off Hwy 11. 10 minutes west of Sylvan Lake

**SEPTEMBER 6 AND 7, 2025**

**9:00 AM TO 5:00 PM DAILY**

*Last train departs at 4:30 pm*

**Ride Tickets: \$10 per person**

(All ticket funds go to the Stollery & Alberta Children's Hospitals)

**For tickets go to**  
[www.trainacres.com](http://www.trainacres.com) **OR**



Food trucks, pizza, ice cream and washrooms available on site.  
Let's come together and make a difference supporting these important causes.

**connecting clans**  
Quality time spent together.

**MONDAY, SEPT 8**

**5PM-8PM**

**Block Party and Registration Night**

**All Ages Welcome!**

**FREE Hotdog Cake**

Outdoor Activities  
Community Group Info & Sign-up

Join us to celebrate 5 years serving our community and check out what is offered locally for all ages!

**Services Available**

- Information & Referral
- Resource Navigation
- Volunteer Services
- Family Wellness
- Meals on Wheels
- Community Services
- Adult Learning
- Alix Food Bank
- Wise Owls

[alixmirrorwellness@gmail.com](mailto:alixmirrorwellness@gmail.com)

Follow us on Facebook  
@AlixandAreaCommunityResourceCentre

[www.alixcrc.com](http://www.alixcrc.com)

**Monday to Thursday**  **10:00 AM - 4:00 PM**

\*Closed all statutory holidays\*


Bay 1, 5008 50 Ave, Alix, AB

**403-396-3369**





**GATHER** gull lake centre





## Made for Gathering

Great Events and Gatherings start with the right space.

Nestled within 70 acres of quiet wooded grounds, Gull Lake Centre is the perfect setting for group retreats, seminars, conferences, workshops, family reunions, and a host of other events. We are open year-round for event and retreat rentals for groups of 20-250.

For more information on pricing, facilities, and amenities visit:  
[gulllakecentre.ca/rentals](http://gulllakecentre.ca/rentals)

## WANTED

LOVING, CARING FOSTER PARENTS

Do you enjoy helping children reach their full potential? If so...

**UP** Unlimited Potential Community Services

### Children First Foster Care Program

Needs you! Become a Foster Family Today!

We are looking for healthy, stable, nurturing homes for children in need to thrive until they are able to return home.

For more information about the exciting and challenging world of foster parenting or how to become a foster parent today..., Please reach out to us:

Children First  
 780-699-7379  
[cffostercare@upcs.org](mailto:cffostercare@upcs.org)  
[upcs.org/services/foster-care](http://upcs.org/services/foster-care)




REUSE RECYCLE

## BENTLEY BOUTIQUE

Use west entrance beside bay door.  
 Bentley Long Term Care Facility  
 4834 - 52 Avenue, Bentley

### Open Tues/Thurs 10-12 & 1-3

Items for all ages & sizes.

Next to new clothing donations welcome!

Volunteer Coordinator Sandy  
 403.318.0270

Bentley Community Services  
 403.748.2180




# 2025

## CASINO NOW OPEN!

### THE TRACK on 2

CASINO & HORSE RACING

*The Track On 2 - Where you can always bet on the excitement of the race!*

July						
S	M	T	W	T	F	S
		1	2	3	4	5
6	7	8	9	10	11	12
13	14	15	16	17	18	19
20	21	22	23	24	25	26
27	28	29	30	31		

August						
S	M	T	W	T	F	S
				1	2	
3	4	5	6	7	8	9
10	11	12	13	14	15	16
17	18	19	20	21	22	23
24	25	26	27	28	29	30
31						

September						
S	M	T	W	T	F	S
	1	2	3	4	5	6
7	8	9	10	11	12	13
14	15	16	17	18	19	20
21	22	23	24	25	26	27
28	29	30				

1:10 p.m. MT

Note: Post Times may be modified based on weather conditions

Open Year Round.

Follow us on Facebook/Instagram, or check out our website for all the events happening at the Track.

- Midget Wrestling
- Bike Rally
- Karaoke
- Crib Nights
- Slot Tournament

... just some of our upcoming Events!

Live Stream Available at: [www.thetrackon2.com](http://www.thetrackon2.com)



Facebook.com/thetrackon2

## PLAY ON!

WE'LL HELP WITH THE SPORT REGISTRATION FEES.



Alberta **EVERY KID CAN PLAY**

A GOVERNMENT OF ALBERTA PROGRAM POWERED BY KIDSPORT

Your child could be eligible for a grant up to \$250 to help cover sport registration fees! Find out more at [kidsportcanada.ca/alberta/lacombe](http://kidsportcanada.ca/alberta/lacombe)

KidSport

MARY C MOORE LIBRARY CHILDREN'S PROGRAM PRESENTS

## SURF'S UP

A FAMILY ESCAPE ROOM EVENT

Courtesy of @Home Escape Rooms

20 SEPT 2025

PRIZE FOR THE TEAM THAT ESCAPES THE QUICKEST!



This is a family event for children aged 7 and up along with their caregivers. We will run 9 sessions throughout the day on September 20th. Maximum 8 participants for each 30 minute session. Sign up with library staff.

SIGN UP FEE: \$5 PER FAMILY  
 REGISTRATION OPENS AUGUST 18

WORK TOGETHER TO SOLVE THE PUZZLES, OPEN THE LOCKS AND ESCAPE BEFORE THE TIME IS UP

FOR MORE INFORMATION OR TO REGISTER, EMAIL MIRANDA AT [MIRANDA@MIRANDA.CL@PRLAB.CA](mailto:MIRANDA@MIRANDA.CL@PRLAB.CA)




Find Lacombe County online



/LacombeCounty



@lacombecounty



Lacombe County



/LacombeCounty



[lacombecounty.com](http://lacombecounty.com)



**FREE EVENT**

**WE ARE PLANNING**

**Good Neighbor Day**

**SEPTEMBER 24/2025 3:30 TO 7:30 PM**

**COME & GO AT THE BENTLEY AG CENTRE**

**Book Your Spot!**

Non Profits/Service Providers - information tables available

**Sponsor Opportunities**

Door Prizes, Water/Pop, Dessert, burgers/hotdogs, what would you like to contribute?

**Volunteer Opportunities**

Set Up/Planning, Drink Station, Cooks, Clean Up, Floaters,

**The Plaider's are booked!**

**Children's Corner - Seventh Day Adventist Church**

**BBQ - Nutrien**

**Facility - Bentley Ag Centre**

**Touch A Truck - Town and others!**

**Info: 403-748-2160**

**TOGETHER WE ARE BETTER!**

*Bentley*

**fcss**

Lacombe & District  
Family and Community  
Support Services

**Tools for School & Coats for Kids**

Serving City of Lacombe, Lacombe County,  
Mirror, Tees & Clive

**TOOLS for SCHOOLS**

**COATS FOR KIDS**



**One Application - BOTH programs!**

If you child resides in the County & attends other municipal schools, they qualify for our program.  
Call 403-782-6637 for more info!

September Programming  
See You Soon!

**FREE**

**Mondays 3:15 to 5:15**

**Grades 3 to 5 Kids Klub**

Where young minds meet big ideas!

With a focus on community engagement our program nurtures good citizenship, emotional regulation and creativity. We will explore science and art while learning valuable life skills in a fun and supportive environment

**FREE**

**Fridays 9:30 to 11:30**

**Stay & Play**

**Ages 0-6 with an adult**

Location: Basement of Town Office  
Contact: Community Services 403-748-2160  
Programs Facilitated by: Parenting Proactively 101

*Bentley*

**connecting community through**

**18+ SOCIAL DANCE**

Just some people who want to get together, share skills and dance!

We have enjoyed some two stepping, waltzing, line dancing, jiving, lindy hop and laughs!

**We Invite you to our 3rd Social Dance Session**

**WHEN:** Sunday, August 17 from 6:30 to 8:30  
**WHERE:** Bentley Seniors Drop In  
**BRING:** non alcoholic drink(s) or a glass/cup for water, snack if you want one  
**COST:** \$5 cash per person

**Questions: 403-748-2160**

**Brought to you by:**

**Awesome VOLUNTEERS**

*Bentley*

*Seniors Drop In*

**Celebrating the Medicine River Watershed with Art**

**Plein Air Painting Event Sunday September 14, 2025**

**Calling all artists and photographers (dabbler to pro).** Help us to celebrate the beauty of the Medicine River Watershed by joining us for a fun day of painting or picture taking. Meet fellow artists in the community and get to know neighbors and community members all while working to capture the beauty of the Medicine River from your perspective- in your choice of medium.

**Artists and Photographers: (10:00 am-4:30 pm)**

- Meet at 10:00 am at the Gilby Hall in Lacombe County: just north of highway 12 at the corner of the Range Road 3-5 exit.
- Choose a site from a variety of picturesque locations map, create your masterpiece (painting or photos).
- Bring your finished painting and/or printed images of your photos to the hall by 4:30 pm for public display.
- Enjoy a complimentary dinner with fellow artists, neighbors and friends from 5-7 pm.

**Children: (4:00-5:00 pm)**

- Parents – bring your children for some table art fun from 4:00-5:00 pm.
- Art supplies provided. All works will be displayed for public viewing and a people's choice award.

**Public viewing and Complimentary Supper- (4:30-7:00 pm)**

- Community members are invited to join us at the hall to view the finished works of art, vote on a people's choice award, view our featured artist showcase and enjoy a complimentary supper and social time with all the artists.

The People's choice awards will be profiled on our MRWS website, local news and Facebook pages.

**RSVP:** please email [Medicineriverwatershed@gmail.com](mailto:Medicineriverwatershed@gmail.com) or to: Debbie at 403-598-0726 or Ward at 780-679-2113

This event will take place rain or shine. If raining- lots of photos will be available for inside painting in the hall- so come on out and help us to celebrate our watershed!

**This year's feature artist is Sharon Johnston from Rimbey**





## SEPTEMBER 2025

Sun	Mon	Tue	Wed	Thu	Fri	Sat
31	SEPT 1	2	3	4	5	6
7	8 Labour Day (OFFICE CLOSED)	9	10	11 County Council 9AM	12 County News Submissions due	13
14	15	16	17	18	19 County News published	20
21	22 Municipal Elec- tion Nomination Deadline (NOON)	23	24	25 County Council 9AM	26	27
28	29	30 National Day for Truth & Reconciliation	OCT 1	2	3	4

**Upcoming Events:** October 7: Committee of the Whole (9AM), October 9: County Council (9AM),  
October 13: Thanksgiving (Office Closed), October 20: Election Day,  
October 29: Organizational Meeting (9AM), October 30: County Council (9AM)

## **ATTENTION:** Notification of Access for County Assessors

Under the authority of the Municipal Government Act, Part 9, Lacombe County's Assessors regularly visit properties throughout the municipality to collect and verify the information for the purpose of preparing property assessments. An inspection may occur at any time throughout the day between 8:30 am and 4:30 p.m.

Assessors operate vehicles marked as the Lacombe County and carry identification and will present it upon request. If you have questions or concerns, please contact us at the Lacombe County Administration Office at 403-782-6601.



**Proudly Maintaining Your Highways**  
Counties: Lacombe | Ponoka | Red Deer | Wetaskiwin  
**Report road conditions 24/7**  
**1 877 875 3263**

For current road conditions on Twitter, safely follow @S11Alberta or download the S11AB App

Follow us online, and stay up-to-date on Lacombe County news, events and other information!



Phone | 403.782.6601 | Email | info@lacombecounty.com | Fax | 403.782.3820

### COUNTY NEWS

is published by Lacombe County and printed by GreatWest Publishing. If you have feedback or story ideas, please contact:

Nicole Plewis, Communications Coordinator  
communications@lacombecounty.com  
403.782.6601

## Lacombe County Directory

RR3, Lacombe Alberta T4L 2N3 www.lacombecounty.com

### Department Numbers:

Main Office - 403-782-6601

Planning Services - 403-782-8389

Community Services - 403-782-8959

Operations - 403-782-8379

Public Works Shop - 403-782-3567

### General

After Hours Emergency Answering Service 403.357.1210

Administration Fax 403.782.3820

Public Works Fax 403.782.5356

**For Service Requests, see our website - or phone the switchboard at 403-782-6601**

Council	Home	Cell
John Ireland, Div. 1 (jireland@lacombecounty.com)		403.392.3981
Brenda Knight, Div. 2 (bknight@lacombecounty.com)	403.788.2168	403.550.2168
Barb Shepherd, Div. 3 (bshepherd@lacombecounty.com)		403.340.9724
Dwayne West, Div. 4 (dwest@lacombecounty.com)		403.660.2328
Ken Weenink, Div. 5 (kweenink@lacombecounty.com)		403.350.8014
Allan Wilson, Div. 6 (awilson@lacombecounty.com)		403.506.3735
Dana Kreil, Div. 7 (dkreil@lacombecounty.com)	403.746.3607	403.358.9400

### Senior Administration

Tim Timmons, County Manager  
ttimmons@lacombecounty.com

Michael Minchin, Director of Corporate Services  
mminchin@lacombecounty.com

Bill Cade, Director of Operations  
bcade@lacombecounty.com

Dale Freitag, Director of Planning Services  
dfreitag@lacombecounty.com

Dion Burlock, Director of Community Services  
dburlock@lacombecounty.com

Call 403-782-6601 to speak with the County Manager or with a Lacombe County Director