

Friday, June 16, 2023 | Volume 6

Lacombe County 2023 property assessments & tax notices mailed-out

Municipal property assessments and tax notices were recently mailed out to Lacombe County ratepayers. Residents can expect to receive their 2023 notices in the coming weeks. If you have not received your notice by July 15, 2023, please contact Lacombe County's Assessment Department at 403-782-6601.

"We encourage ratepayers to be proactive and ensure they have received their assessment and tax notice from Lacombe County," said Michael Minchin, Director of Corporate Services at Lacombe County. "It is essential to review the notice promptly to verify the information and address any concerns in a timely manner."

Property owners are required to pay their taxes by the deadline, which is August 31, 2023. Please note that penalties will be applied after this date, even if you have not received an official tax notice.

The County's assessment and tax notice is a combined document. Here are some key points to consider:

- Anyone wishing to appeal their assessment has 60 days from the notice of assessment date to do so. The appeal date is clearly indicated on your notice of assessment.
 - o Please be aware that a per parcel fee will be

charged for individuals filing complaints against assessments.

- o The fee will be refunded if the Assessment Review Board decides in favour of the complainant.

- The property tax payment deadline is August 31, 2023.
 - o Property owners who miss the tax payment deadline will face a 6% penalty on the outstanding taxes owed starting September 1, 2023.
 - o An additional 10% penalty will be added on December 1 for all unpaid taxes after November 30.

"Like other online bill payments, there may be a processing delay for online tax payments. Therefore, individuals planning to pay their taxes through electronic banking should not leave it until the last minute," advised Minchin. "To avoid all penalties, Lacombe County must receive tax payments by the last business day in August."

Michael Minchin, Director of Corporate Services at Lacombe County, added, "We recognize the importance of timely tax payments for the smooth functioning of our community."

CONTINUED ON PAGE 7

Success Grows Here! Introducing Lacombe County's NEW Economic Development Strategy

Lacombe County is thrilled to announce the recent approval of Success Grows Here! An Economic Development Strategy for Lacombe County by County Council. This significant milestone signals the County's unwavering commitment to fostering economic growth, attracting investment, and propelling the region towards a prosperous future.

The newly approved Economic Development Strategy seeks to build on Lacombe County's legacy of robust land use planning by engaging with local entrepreneurs, businesses, investors, industry and agricultural producers to enhance economic development opportunities, and is the result of extensive collaboration and engagement with these groups. It provides a framework for how Lacombe County can support business retention and investment in our community.

"The goal of the County's new Economic Development Strategy is to bring life to our development plans by engaging local entrepreneurs, businesses, investors, industry and agricultural producers in pursuit of opportunities," said Dale Freitag, Director of Planning Services. "It serves as a comprehensive blueprint, guiding Lacombe County's efforts to leverage its unique strengths and capitalize on emerging opportunities in diverse sectors."

With a rich history and a diverse economic landscape, Lacombe County is poised to unlock its full potential and become a premier economic hub. The approved strategy sets out a clear vision and actionable steps to create a business-friendly environment that nurtures entrepreneurship, fosters innovation, and supports local businesses.

CONTINUED ON PAGE 3

What's Inside

- 2 County Peace Officer steps up during wildfire crisis
- 3 SE Bentley ASP - Public Meeting
- 4 Safety First
- 5 Mirror Corner
- 6-7 Financial Statements
- 8 Prussion Carp alert
- 10 Farm Family Award nominations
- 10 Verbenone for Mountain Pine Beetles
- 12-13 Subdivision and Development Activity
- 14 Business Feature: Range Road Enterprises
- 15 Economic SPOTlight: Billyco Junction
- 16 Council Highlights
- 17 Chamber of Commerce news
- 18 Paid Parking Program reminders
- 19 Drought Resilience webinar
- 19-23 Around the County: Events & Info

www.lacombecounty.com

LACOMBE
COUNTY

WHERE PEOPLE ARE THE KEY

Publication Mail Agreement No 43726064

Return undeliverable items to:
Lacombe County
RR3, Lacombe, AB T4L 2N3

Tax Installment PAYMENT PLAN



Sign up **TODAY**
for the monthly plan.

Contact Lacombe County at (403) 782-6601 or
visit www.lacombecounty.com for more details.



Automatic
Budget-friendly
Simple
Convenient

MAILING ADDRESSES for tax notices



**If your address has changed - OR IF
YOU KNOW SOMEONE WHO RECENTLY
MOVED TO LACOMBE COUNTY - ensure
Lacombe County has the up-to-date
information!**

Call 403-782-6601 or email info@lacombecounty.com.

We also recommend **updating the title of your
property with Alberta Land Titles**. You can obtain a
form from us, by calling 780-427-2742, or online [https://
www.alberta.ca/land-titles-overview.aspx](https://www.alberta.ca/land-titles-overview.aspx) (under
Change of address and name).

Lacombe County Peace Officer Ray Kawai steps up in Drayton Valley wildfire crisis

In times of need, individuals often demonstrate the resilience and compassion within communities. Recently, Lacombe County Peace Officer Ray Kawai exemplified extraordinary dedication and selflessness by responding to a request for assistance from the Town of Drayton Valley during a devastating wildfire. Ray's primary focus was ensuring the safety and well-being of animals left behind during the evacuation.

Promptly answering the call, Ray joined forces with other committed individuals, including the Alberta SPCA, Morinville CPOs, Red Deer City CPOs, Fort Saskatchewan CPOs, and locksmiths from various towns. This collaborative team was driven by a shared commitment to the welfare of the animals affected by the wildfire.

"With the town under evacuation orders, Drayton Valley's streets were eerily quiet, and were being

patrolled by the RCMP and other enforcement agencies to ensure the safety and security of the properties," Ray recalled.

Coordinating efforts among multiple agencies and citizens was a challenging task, but the team utilized a private chat group to keep everyone informed, updated on tasks, and track the homes that had been attended to. The experience brought to light the heartwarming sight of numerous agencies and local businesses coming together to donate their time and resources to support the first responders and volunteers during this critical time.

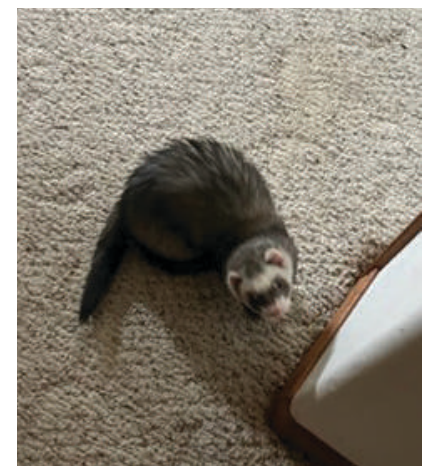
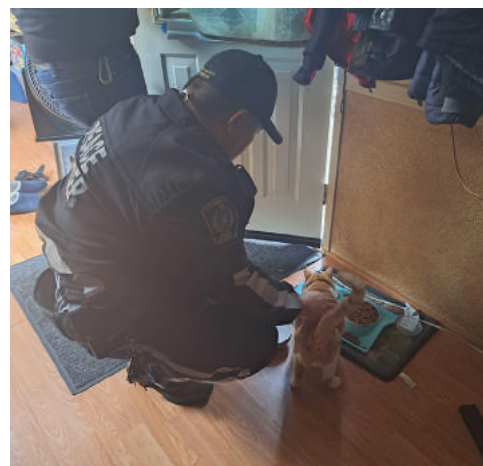
Working tirelessly during their time in Drayton Valley, Ray and the team faced a significant workload, encountering over 360 animals in need of care and assistance. Cats, dogs, snakes, horses, chickens, ferrets, and various reptiles were among the animals

that required attention. Through their relentless efforts, Ray and the team successfully reunited over 120 animals with their owners, providing solace to distressed families.

Ray humbly shared, "We encountered some unique animals, like a snake that needed to be fed mice, and some adorable ferrets."

The positive feedback on social media from grateful citizens was a testament to the community's gratitude for the team's compassionate and professional efforts. It showcased the strength and unity that emerges in times of crisis.

In times of crisis, it is these acts of kindness and collaboration that remind us of the strength of our community. Let us applaud Ray and their fellow responders for their tireless efforts in Drayton Valley.



PUBLIC MEETING

SOUTHEAST BENTLEY

AREA STRUCTURE PLAN



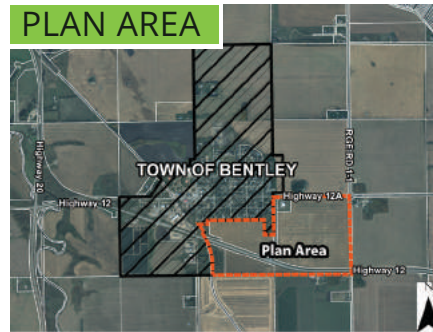
Thursday June 29, 2023 @ 6:00 PM

Presentation begins at 6:30 PM

Blindman Valley Ag Centre, 5202 53 St Close, Bentley
(located behind the Bentley Arena off of 50th Street)

The Town of Bentley and Lacombe County are working together to encourage commercial and industrial growth opportunities in the north half of Section 23-40-1-W5M, situated within Lacombe County, southeast of Bentley.

The objective of this project is to provide a conceptual framework and design standards through which future industrial and commercial development may occur on these subject lands. The proposed *Southeast Bentley Area Structure Plan* has been drafted in response to the feedback received from the public meeting held in November 2022. The Plan Area has been reduced in size, removing the SW and SE 23 in response to concerns expressed by landowners. This proposed Plan also includes provisions that address concerns expressed about land use compatibility for the proposed commercial area south of 48 Avenue. The draft Plan can be viewed on either municipalities' websites.



On Thursday, June 29, 2023, we will be hosting a second public meeting about the project. You are welcome to attend to share your feedback on the proposed Plan! Your input will help us make key decisions for the next steps of the Project.

Display boards will be available for viewing and there will be an opportunity for discussions and questions after the presentation. A survey will be available to gather feedback at the meeting, and a survey link will be available afterwards on the websites.

For more information about the Project please visit
www.townofbentley.ca or www.lacombecounty.com
or contact Albert Frootman, RPP, MCIP, Project Lead at
403-343-3394 or albert.frootman@pcps.ab.ca

WE'RE HIRING
WE'RE HIRING
WE'RE HIRING
WE'RE HIRING

ECONOMIC DEVELOPMENT OFFICER

full details at
www.lacombecounty.com



(CONTINUED from front): Success Grows Here! Introducing Lacombe County's NEW Economic Development Strategy

Key highlights of the Economic Development Strategy include:

- 1. Capacity Building:** Lacombe County Council, staff, and community volunteers have the capacity to contribute to the County's strategic economic development by working together as a team to support local business leaders.
- 2. Investment Readiness:** Prospective investors receive excellent customer service in response to investment inquiries as a result of readily available plans, contact networks, community information, property details and internal processes.
- 3. Marketing and Communications:** Active marketing and communications leads to a strong sense of community among current and future businesses resulting in participation in economic development workshops, events, and initiatives.
- 4. Community Engagement:** Entrepreneurs, investors, industry, agricultural producers, neighbors, and community organizations actively contribute to the identification and advancement of development opportunities.
- 5. Pursuing Opportunities:** Local business leaders and investors participate in familiarization tours, opportunity assessments, and feasibility studies that lead to development in the County.

Lacombe County is confident that the implementation of this ambitious Economic Development Strategy will unleash economic prosperity, generate employment opportunities, and enhance the overall quality of life for its residents.

County Deputy Reeve, John Ireland, expressed his excitement about the approved strategy, stating, "We are delighted to embark on this transformative journey with our new Economic Development Strategy. By harnessing our collective strengths and fostering an environment conducive to growth, we can unlock tremendous opportunities for businesses, residents, and the entire community."

For further information about Lacombe County's Economic Development Strategy, please visit <https://www.lacombecounty.com/economic-development-strategy> or contact Planning Services at 403-782-8389.

ATTENTION:

Notification of Access for County Assessors

Lacombe County municipal Assessors will be visiting properties throughout the municipality this year to verify property information to ensure accurate and equitable assessments – we appreciate your cooperation in doing so.

Our assessors carry identification and will present it upon request. If you have questions or concerns, don't hesitate to get in touch with us at the Lacombe County Administration Office.

SAFETY FIRST



**Grandma? Do you know who this is?
Is that you John?**

Learn how to avoid the grandparent scam: cba.ca/grandparent-scam

ASSOCIATION DES BANQUIERS CANADIENS **b** CANADIAN BANKERS ASSOCIATION

RCMP ROYAL CANADIAN MOUNTED POLICE

ONLINE CRIME REPORTING
is now available



Report it online!

✓ YOU CAN FILE A REPORT IF:

- You have lost something that costs less than \$5000
- Someone has stolen something from you that costs less than \$5000
- Someone has vandalized your property or vehicle and it will cost less than \$5000 to repair it
- The crime happened within the jurisdiction of the Alberta RCMP
- Thefts over \$5,000 are accepted from oil, telecommunications, and utility companies

✗ YOU CANNOT USE ONLINE CRIME REPORTING IF:

- There is a witness or suspect
- There are lost or stolen items involving personal identity, firearms, licence plates or decals

All crimes reported online to the Alberta RCMP will be followed up with a phone call from a police officer within five business days.

[HTTPS://OCRE-SIELC.RCMP-GRC.GC.CA/ALBERTA](https://ocre-sielc.rcmp-grc.gc.ca/alberta)




Royal Canadian Mounted Police Gendarmerie royale du Canada

Canada

GOLF CARTS & ELECTRIC SCOOTERS - Road Use

DID YOU KNOW?



Golf carts and electric scooters are classified as prohibited miniature vehicles under the Traffic Safety Act and Lacombe County Bylaws.

This means that golf carts and electric scooters are strictly prohibited on any highway, including ditches and sidewalks alongside the roadway.



Miniature vehicles may only operate on private property or in relation to electric scooters, where Alberta Transportation has issued a permit with the approval of the municipality.

Failing to obey these rules may not only result in costly fines, but their operation poses a risk to your safety and others.

For more information refer to these links:

GUIDE TO SMALL VEHICLES:
MICROSOFT WORD - SMALL_VEHICLE_BOOKLET_FINAL.DOC (ALBERTA.CA)

TRAFFIC SAFETY ACT:
[HTTPS://KINGS-PRINTER.ALBERTA.CA/1266.CFM?PAGE=T06.CFM&LEG_TYPE=ACTS&ISBNCLN=9780779838714](https://kings-printer.alberta.ca/1266.cfm?PAGE=T06.CFM&LEG_TYPE=ACTS&ISBNCLN=9780779838714)

OFF HIGHWAY VEHICLE BYLAW:
[HTTPS://WWW.LACOMBECOUNTY.COM/EN/LIVING-HERE/OFF-HIGHWAY-VEHICLE-USE.ASPX](https://www.lacombecounty.com/en/living-here/off-highway-vehicle-use.aspx)

RCMP: Remember to buckle every time!!

Buckling up remains the simplest and most effective way to protect you and your passengers from injury in the event of a collision. The Alberta RCMP encourages you to practice the following traffic safety tips for optimal use of seatbelts:

- Ensure the seatbelt is positioned securely across the hip bones and the shoulder. The shoulder belt should sit across the centre of the chest, and never under your arm or behind your back. In a collision, this could cause fatal injuries.
- Most children are ready for standard seatbelts when they are between 8 and 12 years of age and are taller than 4'9" (145 cm).
- Children under the age of 13 are safest in the back seat.
- "According to Alberta Transportation, there were 341 unbelted fatalities in Alberta from 2012 to 2016 – this number is still far too high. "Seatbelts should always be worn, regardless of the distance or speed you are traveling. Always apply the same sensible safety rules to all vehicles, including recreational ones."

safety is a shared responsibility: buckle up, every single time, whether you're driving to work or just around the block."

In Alberta, the law requires all occupants traveling in a vehicle to wear a seat belt, and it is the driver's responsibility to ensure that all passengers under the age of 16 years are properly restrained in the vehicle. If passengers are not properly restrained, the driver may receive a seat belt fine.

Car drivers and front seat passengers must wear a seat belt, unless they have a medical exemption certificate. Adults travelling in the rear of a car must also use seatbelts, if they're fitted. It's the responsibility of the adult passenger (not the driver) to make sure that they are using the seatbelt.

In Alberta, every person travelling in a motor vehicle must wear a seat belt or use a child safety seat. Young children under six years of age and 18 kilograms or less must travel in the appropriate child safety seats. If a child is not correctly restrained the driver is responsible for paying the appropriate fine.

"In 2019, Alberta RCMP issued over 9,000 tickets to vehicle drivers and passengers for not wearing a seatbelt," said Supt. Gary Graham, Alberta Traffic Services. "We remind Albertans that seatbelts are proven to save lives and minimize injuries. Traffic

Drivers caught not wearing a seat belt will face points on their driving licence under plans to increase penalties for motoring offences. Drivers can lose their licence if they build up to many points.

MIRROR CORNER



PLANNING SERVICES NOTICE OF SPECIAL EVENTS

Please note that the Whistle Stop Cafe in the Hamlet of Mirror is planning to host the following special events in 2023, subject to the requirements of Development Permit 89/22.

A letter with event details will be sent to all landowners within a 2-mile radius.

- July 1 - Canada Day celebration, Live Music, cars & bikes, BBQ
- July 15 - Live music, BBQ
- August 12 - BBQ, Car show
- August 19 - Bike show, RODEO
- September 9 - Chris Birthday bash
- October 31 - Halloween Bash, Live music, BBQ

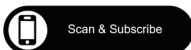
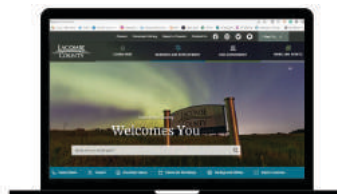
STAY IN THE KNOW!



<https://subscribe.lacombecounty.com/Subscribe>

to receive emails on:

News/Announcements Events
Council Meetings
Safety Alerts
Construction Notifications



OR...subscribe to individual pages of interest



Community Notice:

Joffre Site Polyethylene One (PE1) maintenance turnaround planned



Our PE1 facility will be shut down from mid-May to end of June, 2023 for a turnaround.

What can you expect?

- Flaring during plant shut-down and start-up
- An increase in contractors to site (approximately 800 contractors at peak)

How are we minimizing impact?

- West access to site
- Staggered shifts
- Contractor orientation will include road etiquette



Attention to neighbour impacts is always a priority.

If you have questions, call our 24-hour number 403-314-8767 or email joffresite@novachem.com
www.novachemicals.com

What is a turnaround?

Turnarounds offer us the opportunity to conduct maintenance and renewal of our facilities outside of our day-to-day maintenance activities.

Why do we flare?

Flaring is considered to be a safe, environmentally acceptable way to dispose of hydrocarbons — required when a plant needs to isolate for maintenance activities and during emergency events.

Other planned maintenance activities:

- Ethylene One (E1) mini-outage — Spring (may align with PE1)
- Advanced SCLAIRTECH™ Technology Facility (AST1) outage — Fall



2023 Mirror Dog Tags

A license is required for all dogs in Mirror. After February 28, 2023, the cost increases to \$30 for an altered dog and \$50 for an unaltered dog. For more information, please call (403) 782-6601 or visit www.lacombecounty.com/en/living-here/animal-control.aspx.

Lacombe County will issue a tag for each dog, which must be attached to a collar worn by the dog at all times. Lacombe County Enforcement Officers will do checks to ensure compliance.

If you would like to report a contravention of the Dog

Control Bylaw, please call 403-506-9380, or email info@klassickennels.com. **For animal welfare issue please contact the Alberta SPCA at <http://www.albertaspca.org/>***

Jolly Seniors

Pancake breakfast every second Sunday from 9 a.m.- 1 p.m.

Booking Mirror Community Hall

Call Lisa 403-788-3890 or cell 403-505-3894.

Friends of the Mirror Library Society/Mirror Library

The Mirror Library would like to remind patrons of the many items available for borrowing. We carry books for everyone, audiobooks, DVDs, games, and puzzles.

Library Hours: Wednesdays 1-7 p.m.
2nd & 4th Saturday, 10 a.m - 2 p.m.

Please like us at: facebook.com/booksinmirror for the most up to date information. The Library also

has meeting spaces for rent and free Wi-Fi. Please contact us through the Facebook page or email booksinmirror@gmail.com.

Mirror Royal Canadian Legion Branch 189 - 5015 50th Avenue

Meat Draws Saturday at 4 p.m. General meetings second Sunday at 1 p.m. (unless otherwise posted).

Mirror and District Museum

Contact mmuseum@cciwireless.ca if you would like to volunteer and for hours of operation

CN Rail crossing delays

If you experience delays longer than 20 minutes at the Mirror rail yard crossing, call CN Rail at 1-800-465-9239. Follow the prompts and be ready to provide details shown on the crossing signal mast to CN personnel. Transport Canada may be reached at 1-888-463-0521.



Tel: 403 342 2500
Fax: 403 343 3070
www.bdo.ca

BDO Canada LLP
Suite 100 179D Leva Avenue
Red Deer County AB T4E 1B9
Canada

Independent Auditor's Report

To the Members of Council of Lacombe County

Opinion

We have audited the consolidated financial statements of Lacombe County and its controlled or owned organizations (the Group), which comprise the consolidated statement of financial position as at December 31, 2022, and the consolidated statement of operations, consolidated statement of changes in net financial assets, and consolidated statement of cash flows for the year then ended, and notes to the consolidated financial statements, including a summary of significant accounting policies.

In our opinion, the accompanying consolidated financial statements present fairly, in all material respects, the consolidated financial position of the Group as at December 31, 2022 and its consolidated results of operations, its consolidated change in net financial assets, and its consolidated cash flows for the year then ended in accordance with Public Sector Accounting Standards.

Basis for Opinion

We conducted our audit in accordance with Canadian generally accepted auditing standards. Our responsibilities under those standards are further described in the Auditor's Responsibilities for the Audit of the Financial Statements section of our report. We are independent of the Group in accordance with the ethical requirements that are relevant to our audit of the consolidated financial statements in Canada, and we have fulfilled our other ethical responsibilities in accordance with these requirements. We believe that the audit evidence we have obtained is sufficient and appropriate to provide a basis for our opinion.

Responsibilities of Management and Those Charged with Governance for the Consolidated Financial Statements

Management is responsible for the preparation and fair presentation of these consolidated financial statements in accordance with Public Sector Accounting Standards, and for such internal control as management determines is necessary to enable the preparation of financial statements that are free from material misstatement, whether due to fraud or error.

In preparing the consolidated financial statements, management is responsible for assessing the Group's ability to continue as a going concern, disclosing, as applicable, matters related to going concern and using the going concern basis of accounting unless management either intends to liquidate the Group or to cease operations, or has no realistic alternative but to do so.

Those charged with governance are responsible for overseeing the Group's financial reporting process.

Auditor's Responsibilities for the Audit of the Consolidated Financial Statements

Our objectives are to obtain reasonable assurance about whether the consolidated financial statements as a whole are free from material misstatement, whether due to fraud or error, and to issue an auditor's report that includes our opinion. Reasonable assurance is a high level of assurance, but is not a guarantee that an audit conducted in accordance with Canadian generally accepted auditing standards will always detect a material misstatement when it exists. Misstatements can arise from fraud or error and are considered material if, individually or in the aggregate, they could reasonably be expected to influence the economic decisions of users taken on the basis of these financial statements.

As part of an audit in accordance with Canadian generally accepted auditing standards, we exercise professional judgment and maintain professional skepticism throughout the audit. We also:

- Identify and assess the risks of material misstatement of the consolidated financial statements, whether due to fraud or error, design and perform audit procedures responsive to those risks, and obtain audit evidence that is sufficient and appropriate to provide a basis for our opinion. The risk of not detecting a material misstatement resulting from fraud is higher than for one resulting from error, as fraud may involve collusion, forgery, intentional omissions, misrepresentations, or the override of internal control.
- Obtain an understanding of internal control relevant to the audit in order to design audit procedures that are appropriate in the circumstances, but not for the purpose of expressing an opinion on the effectiveness of the Group's internal control.
- Evaluate the appropriateness of accounting policies used and the reasonableness of accounting estimates and related disclosures made by management.
- Conclude on the appropriateness of management's use of the going concern basis of accounting and, based on the audit evidence obtained, whether a material uncertainty exists related to events or conditions that may cast significant doubt on the Group's ability to continue as a going concern. If we conclude that a material uncertainty exists, we are required to draw attention in our auditor's report to the related disclosures in the financial statements or, if such disclosures are inadequate, to modify our opinion. Our conclusions are based on the audit evidence obtained up to the date of our auditor's report. However, future events or conditions may cause the Group to cease to continue as a going concern.
- Evaluate the overall presentation, structure and content of the consolidated financial statements, including the disclosures, and whether the consolidated financial statements represent the underlying transactions and events in a manner that achieves fair presentation.
- Obtain sufficient appropriate audit evidence regarding the financial information of the entities or business activities within the Group to express an opinion on the consolidated financial statements. We are responsible for the direction, supervision and performance of the group audit. We remain solely responsible for our audit opinion.

We communicate with those charged with governance regarding, among other matters, the planned scope and timing of the audit and significant audit findings, including any significant deficiencies in internal control that we identify during our audit.

BDO Canada LLP

Chartered Professional Accountants
Red Deer, Alberta
April 27, 2023

Lacombe County Consolidated Statement of Financial Position

December 31	2022	2021
Financial assets		
Cash and cash equivalents (Note 1)	\$ 69,859,982	\$ 63,169,669
Investments (Note 2)	18,056,432	19,608,197
Taxes receivable (Note 3)	1,147,029	626,231
Accounts receivable (Note 4)	6,459,858	9,337,864
Inventories for resale (Note 5)	572,778	549,515
	<u>96,096,079</u>	<u>93,291,476</u>
Liabilities		
Accounts payable and accrued liabilities	2,999,974	3,775,874
Employee benefit obligation (Note 6)	1,887,963	1,462,104
Deposit liabilities	1,317,023	1,268,898
Deferred revenue (Note 7)	1,751,126	6,137,851
	<u>7,956,086</u>	<u>12,644,727</u>
Net financial assets	<u>88,139,993</u>	<u>80,646,749</u>
Non-financial assets		
Tangible capital assets (Note 8)	292,941,219	289,675,932
Prepaid expenses and inventories of supplies (Note 9)	6,852,631	6,571,022
	<u>299,793,850</u>	<u>296,246,954</u>
Accumulated surplus (Note 10)	<u>\$ 387,933,843</u>	<u>\$ 376,893,703</u>
Contingencies and commitments (Note 19)		
Liability for contaminated sites (Note 20)		
Funds held in trust (Note 21)		

Lacombe County Consolidated Statement of Operations

For the year ended December 31	Budget 2022	2022	2021
Revenues			
Taxation - net (Note 12)	\$ 33,549,280	\$ 33,338,856	\$ 31,710,900
Taxation - other (Note 13)	680,000	902,635	847,044
Government transfers (Note 14)	7,461,230	8,203,806	7,432,003
Sales, user charges and costs recovered	2,441,410	2,408,830	2,470,781
Sales to other governments	1,250,730	1,505,708	1,434,858
Permits, licenses, fines, penalties and rentals	614,310	959,432	765,416
Interest, royalties and patronage allocations	1,215,850	2,273,537	1,083,331
Gain on sale of tangible capital assets	-	2,622,749	217,803
Contributed assets	-	4,258,200	-
Development levies	4,222,110	2,529,301	14,576
Other	11,630	79,488	58,008
	<u>51,446,550</u>	<u>59,082,542</u>	<u>46,034,720</u>
Expenditures (Note 15)			
General government	5,808,625	6,139,077	5,240,223
Protective services	3,936,807	3,566,451	3,214,644
Transportation services	29,462,109	28,981,864	28,831,975
Environmental services	3,317,380	2,985,437	2,861,737
Cemetery	58,240	68,424	63,294
Social and family services	390,380	386,621	381,203
Recreation and cultural services	3,502,952	2,933,955	4,545,905
Planning and development	1,139,890	1,032,110	1,121,278
Agriculture services	1,310,478	1,125,972	1,206,571
Write-down of tangible capital assets	-	793,469	1,591,344
Loss on sale of tangible capital assets	-	29,022	64,302
	<u>48,926,861</u>	<u>48,042,402</u>	<u>49,122,476</u>
Deficiency of revenue over expenditures	<u>2,519,689</u>	<u>11,040,140</u>	<u>(3,087,756)</u>
Accumulated surplus, beginning of year	<u>376,893,703</u>	<u>376,893,703</u>	<u>379,981,459</u>
Accumulated surplus, end of year	<u>\$ 379,413,392</u>	<u>\$ 387,933,843</u>	<u>\$ 376,893,703</u>

Lacombe County
Consolidated Statement of Cash Flows

For the year ended December 31	2022	2021
Operating transactions		
Excess (deficiency) of revenue over expenditures	\$ 11,040,140	\$ (3,087,756)
Items not involving cash		
Contributed assets	(4,258,200)	-
Amortization	21,330,881	22,142,177
Gain on disposal of tangible capital assets	(2,622,749)	(217,803)
Write-down of tangible capital asset	793,469	1,591,344
Loss on disposal of tangible capital assets	29,022	64,302
Changes in non-cash operating balances		
Taxes receivable	(520,798)	(52,941)
Accounts receivable	2,878,006	(111,162)
Inventories for resale	(23,263)	(112,948)
Prepaid expenses and inventories of supplies	(281,609)	(125,962)
Accounts payable and accrued liabilities	(775,900)	858,427
Employee benefit obligation	425,859	281,903
Deposit liabilities	48,125	(455,403)
Deferred revenue	(4,386,725)	(772,401)
	<u>23,676,258</u>	<u>20,001,777</u>
Capital transactions		
Acquisition of tangible capital assets	(21,368,402)	(16,137,209)
Proceeds on sale of tangible capital assets	2,830,692	313,790
	<u>(18,537,710)</u>	<u>(15,823,419)</u>
Investing transactions		
Decrease of investments	1,551,765	510,871
Restricted cash balances	786,224	1,684,545
	<u>2,337,989</u>	<u>2,195,416</u>
Net change in cash and cash equivalents	<u>7,476,537</u>	<u>6,373,774</u>
Cash and cash equivalents, beginning of year	<u>61,033,043</u>	<u>54,659,269</u>
Cash and cash equivalents, end of year	<u>\$ 68,509,580</u>	<u>\$ 61,033,043</u>
Cash and cash equivalents is comprised of:		
Cash and cash equivalents	\$ 69,859,982	\$ 63,169,669
Less: restricted (Note 1)	(1,350,402)	(2,136,626)
	<u>\$ 68,509,580</u>	<u>\$ 61,033,043</u>

Lacombe County
Consolidated Statement of Change in Net Financial Assets

For the year ended December 31	Budget 2022	2022	2021
Deficiency of revenue over expenditures	\$ 2,519,689	\$ 11,040,140	\$ (3,087,756)
Acquisition of tangible capital assets	(24,187,200)	(21,368,402)	(16,137,209)
Acquisition of contributed assets	-	(4,258,200)	-
Amortization of tangible capital assets	21,330,881	21,330,881	22,142,177
Gain on sale of tangible capital assets	-	(2,622,749)	(217,803)
Loss on sale of tangible capital assets	-	29,022	64,302
Proceeds on sale of tangible capital assets	2,259,260	2,830,692	313,790
Write-downs of tangible capital assets	-	793,469	1,591,344
	<u>1,922,630</u>	<u>7,774,853</u>	<u>4,668,845</u>
Change in prepaid expenses and inventory of supplies	-	(281,609)	(125,962)
Net change in net financial assets	<u>1,922,630</u>	<u>7,493,244</u>	<u>4,542,883</u>
Net financial assets, beginning of year	<u>80,646,749</u>	<u>80,646,749</u>	<u>76,103,866</u>
Net financial assets, end of year	<u>\$ 82,569,379</u>	<u>\$ 88,139,993</u>	<u>\$ 80,646,749</u>

17. Remuneration Disclosure

Disclosure of remuneration for municipal officials, the chief administrative officer and designated officers as required by Alberta Regulation 313/2000 is as follows:

	Compensation	Benefits & Allowances	Total 2022	Total 2021
Councillors:				
Division 1	\$ 61,050	\$ 15,157	\$ 76,207	\$ 69,437
Division 2	78,544	18,940	97,484	81,680
Division 3- Reeve	75,498	10,801	86,299	67,838
Division 4- Reeve Jan-Oct				64,672
Division 4	60,544	15,130	75,674	15,118
Division 5				48,791
Division 5	66,713	14,833	81,546	15,279
Division 6				45,938
Division 6	57,409	13,853	71,262	14,923
Division 7	72,881	18,347	91,228	72,040
Administration:				
County Manager	262,931	60,065	322,996	318,516
Designated Officer	153,707	12,202	165,909	160,255
Designated Officer	108,235	21,640	129,875	163,801

Council Compensation: includes base pay and per diem.

Council Benefits and Allowances: includes the County's contribution for health, dental and insurance benefits, convention expenses, and mileage paid for attending meetings and other Council functions.

County Manager and Designated Officer Salary: includes regular base pay.

County Manager and Designated Office Benefits and Allowances: includes the County's contribution for Canada Pension Plan, Employment Insurance, health, dental and insurance benefits, pension, professional memberships, tuition and mileage.

Lacombe County 2023 property assessments/tax notices mailed

(CONTINUED FROM FRONT PAGE)

"It is crucial for residents to fulfill their obligations and submit their payments by the specified deadline. We are here to assist and answer any questions related to property assessments and tax notices," said Minchin.

HOW TO PAY

Tax payments are payable to Lacombe County (no later than August 31, 2023) and can be made using one of the following options:

- By mail to: Lacombe County, RR3, Lacombe, AB T4L 2N3

Mailed payments must be postmarked by Canada Post no later than August 31st of the current year. If the postmark is illegible or missing, the actual date of receipt by Lacombe County will apply.

- In Person: At the County Office (40403 Rge Rd 274, Lacombe County, AB) during office hours.
- Deposited in the envelope mailbox located at the road entrance to the County office (Do not submit cash).
- Electronically: Through electronic payment methods, including internet banking and for businesses, electronic funds transfer (EFT). Funds must be received in the County's bank account no later than August 31, 2023
- By Credit Card: visit www.lacombecounty.com and pay through OptionPay, a secure third-party site, to make payment by credit card. (Please note that there is a fee for this service. Lacombe County does not receive any of the credit card fees).
- Tax Installment Payment Plan: Those enrolled in the County's tax installment plan (TIPPs) will see their payment adjusted to reflect the new tax rates for 2023 on their next monthly payment.

**The above due date and penalties DO NOT APPLY to ratepayers enrolled in the Tax Installment Payment Plan (TIPP), which allows property taxes to be paid on a monthly basis instead of one single payment. Enrollment application forms are available at the Lacombe County Administration office or on the Lacombe County website.

The full Financial Statement document is on our website:
<https://www.lacombecounty.com/en/our-government/financial-statements-and-indicators.aspx>

ENVIRONMENT

Measuring ALUS: Proof that Farmers & Ranchers Produce Environmental Services

By Ken Lewis, ALUS Program Coordinator

ALUS has been in Red Deer County now for 10 years, and 150 farmers and ranchers all over that County have enrolled over 10,000 acres in the program.

Those 150 people have adopted new agricultural management practices to benefit the environment, with ALUS support.

This has given ALUS Red Deer County a unique opportunity to measure ALUS impacts. Does ALUS make a difference? Does the environment actually improve?

Eight years ago, ALUS Red Deer County, Cows and Fish, and the farmers and ranchers participating in ALUS set out to answer that question.

From 2015 through to 2018, Cows and Fish visited new ALUS Projects (like an alternative livestock watering project, riparian fencing project, etc.), at roughly 12 locations per year. At each location, they did a "Baseline Riparian Health Inventory". This work provides an idea of the ecosystem services or ecological functions at each site, when a farmer / rancher first did their ALUS Project.

Then, from 2019 through to 2022, Cows and Fish would go back to the same sites, now 4 years later. They would re-do the Riparian Health Inventory at each site, and compare the results to the original baseline inventory at each site.

Every participating farmer or rancher gets a copy of their own Riparian Health Inventory results, so they can see the difference their management choices are making on their farm. ALUS Red Deer County also receives a summary of the results.



Before ALUS
(2016)

Here are some highlights:

- Total number of sites that had a "Baseline" inventory done, and a "Re-visit" inventory done = 51
- Total riparian areas inventoried: 32 km of stream / river / shore length, totalling 365 acres
- Overall (average) improvement in Riparian Health score after 4 years = 5%
- Biggest change in riparian health score in 4 years: 40%
- Sites that started with Healthy riparian areas, tended to stay healthy after the ALUS Project went in. Sites that started with unhealthy riparian areas, tended to have significantly improved health 4 years after the ALUS Project went in.
- Biggest improvements were seen in soil and hydrological health measurements.
- Improvements in riparian health were seen under all types of riparian management by farmers and ranchers, including:
 - o Fencing to completely exclude livestock from riparian areas
 - o Fencing to control how and when livestock used riparian areas
 - o Using grazing rotation to manage how and when livestock used riparian areas
 - o No riparian fencing, and providing livestock a watering site on high ground, away from the water body

So, to answer the fundamental question: When farmers and ranchers do ALUS Projects on their land, to change how riparian areas are managed...does riparian health improve? The answer is "YES". Even in a very short time (4 years is a tiny snapshot of time really, for a riparian area), we see important



After ALUS
(2020)

Prussian Carp

CARASSIUS GIBELIO

Females can spawn up to three times in one year, making them prolific invaders.

3X

Once established, they can be very difficult to get rid of.

24 HOURS

The amount of time prussian carp can survive out of the water.

DON'T LET IT LOOSE

If you catch a Prussian carp, keep it and kill it. Do not release it. Then call the Hotline 1-855-336-BOAT. Never release fish from your aquarium or pond.

Alberta was the first jurisdiction in North America to have an invasive Prussian carp and can be found around the main stem and tributaries of the Bow, Rosebud, Red Deer and South Saskatchewan Rivers.

Prussian carp impact native fish populations by out-competing them for food and habitat, as well as spreading disease and pathogens.

?

It is not known what caused the invasion of "wild goldfish", however it is suspected to have been intentionally released.

Intentional release of invasive species is illegal and could lead to jail time and/or substantial fines.

Alberta

Prussian Carp is a harmful aquatic invasive species. It has been found in local lakes & rivers. The species invades aquatic ecosystems & poses severe threats to aquatic habitats & native fish. If you catch one - keep it and KILL it! Do NOT release it! Call 1-855-336-BOAT (2628).

improvements in riparian health, OR we see that already healthy sites tend to stay healthy.

The important work of measuring the impact of ALUS with farmers and ranchers will continue. "Baseline" and "re-visit" measurements will be happening in the next few years. AND, starting in 2023, a few "long-term re-visit" measurements will occur. Cows and Fish will go back in 2023, to sites as-

essed first in 2015 and again in 2019, to see the impacts of ALUS and farmers / ranchers management over the long term. Stay tuned.

To find out more about ALUS and how ALUS can work on your farm in Lacombe County, please call me at 403-505-9038 or email me at klewis@rdcounty.ca.

Photo on left is before this ALUS Farmer did their ALUS projects. Photo on right shows the same location, 4 years after the riparian management fencing and alternative watering system was provided by the ALUS Farmer.]

OPERATIONS

ALERTS | Construction Notices

If you notice a broken or missing sign on a County road, call us ASAP!!!

**BROKEN OR
MISSING
ROAD SIGNS?**

LACOMBE
COUNTY

Phone: 403-782-6601
Email: info@lacombecounty.com

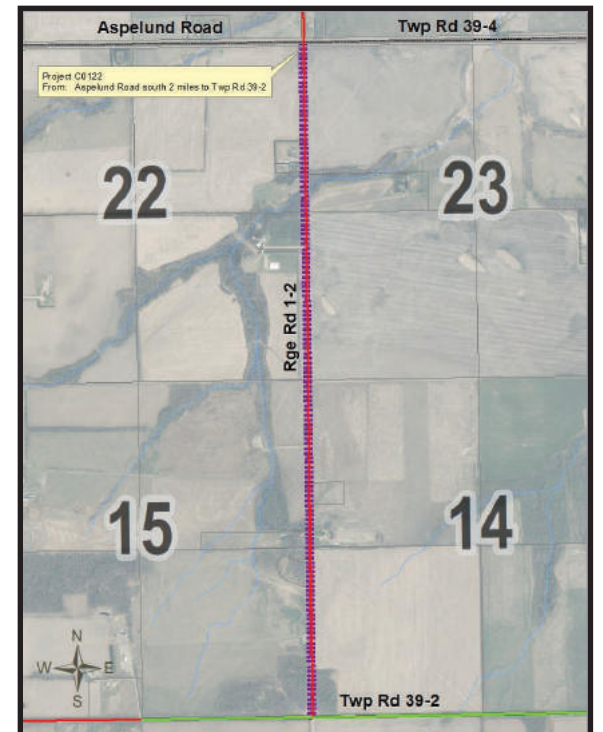
Facebook (@LacombeCounty)
Instagram (lacombecounty)
Twitter (@LacombeCounty)

ROAD CONSTRUCTION Range Road 1-2 (Aspelund Road to Twp Road 39-2)

Notification of Municipal Works for road construction on Range Road 1-2 from Aspelund Road south 2 miles to Twp Rd 39-2

Roadwork will start Monday, July 4, 2023, and take 5 weeks to complete (weather permitting).

Please drive with caution around construction crews, and obey all signs.



Don't get left in the dust!

If you missed the May 12, 2023 deadline, don't worry! You can still get a fall application for Dust Control. If you are interested in having Calcium Chloride in front of your residence or place of business, please contact Cassandra at the County shop at 403-782-3567.

LACOMBE
COUNTY

Ratepayer's 2023 cost-shared rate for one application is \$1.72 per lineal meter, to a maximum of 200 meters. **If you require more than 200 meters**, the additional will NOT be cost shared.

Please contact us if you would like to get on the list for fall applications **before August 4, 2023**.

Note: The application of dust abatement may cause some possible effects, such as loss of vegetation. Lacombe County is not responsible for any claims or damages resulting from the application process.

If you are interested in finding out more about the County's Dust Control Program, please call Cassandra at 403-782-3567, Ivy at 403-782-8379 or email operations@lacombecounty.com

CONSTRUCTION SEASON REMINDER

Please drive carefully and obey ALL signs and speed limits during construction. If you have questions or concerns regarding any project, please contact the Operations department at 403-782-8379.

All notifications and maps can be found at lacombecounty.com.

Please slow down when
passing roadside workers

Alberta

Proudly Maintaining Your Highways
Counties: Lacombe | Ponoka | Red Deer | Wetaskiwin

Report road conditions 24/7
1 877 875 3263

mainroad

511



For current road conditions on Twitter, safely follow @511Alberta or download the 511AB App

AGRICULTURE

Celebrating Excellence in Agriculture: Lacombe County in search of the 2023 Farm Family Award recipient

Lacombe County and the Lacombe and District Chamber of Commerce have partnered for the prestigious Farm Family Award, aiming to recognize the exceptional achievements and contributions of ranch and farm families within our community. The winners of this esteemed award will be announced at the 2023 Chamber Gala in October.

"The Farm Family Award provides a unique opportunity to honour the invaluable contributions made by ranch and farm families in Lacombe County," said Deputy Reeve John Ireland. "Their dedication and innovation continue to drive the agricultural sector forward, thus ensuring a sustainable future for generations to come. We are excited to celebrate their accomplishments."

The Farm Family Award acknowledges excellence in technical farm production and sustainability practices, family farm business management, agricultural industry involvement, and community and rural citizenship. This recognition highlights the remarkable accomplishments of ranch and farm families who have made

significant contributions to the agricultural sector.

About the Nomination Process:

The nomination period for the Farm Family Award is from June 16, 2023, until August 18, 2023. Nominations can be submitted in person or by email to communications@lacombecounty.com. Eligible nominees must be Lacombe County producers whose primary source of income is agriculture.

Nominees must demonstrate a profound commitment to one or more of the following criteria:

- 1. Achievements and/or Innovations in Technical Farm Production:** Recognizing those who have made remarkable advancements in agricultural technology, techniques, or methods.
- 2. Sustainability Practices:** Honoring individuals who have implemented sustainable farming practices, contributing to the preservation of natural resources and the environment.

3. Family Farm Business Management: Celebrating families who have exemplified excellence in managing their farm businesses, showcasing exemplary leadership and strategic decision-making.

4. Agricultural Industry Involvement: Acknowledging individuals who have actively participated and contributed to the agricultural industry, sharing knowledge and fostering growth.

5. Community and Rural Citizenship: Recognizing farm families who have made outstanding contributions to their local communities and exemplify strong rural values.

Nomination forms must be completed in their entirety and submitted no later than August 18, 2023. For more information or assistance, please contact communications@lacombecounty.com or call (403) 782-8959.

Verbenone: an effective solution for combating Mountain Pine Beetles

Verbenone is currently available for sale at Lacombe County. Each pack contains 10 pouches of verbenone. These are for sale at Lacombe County for \$60.00+GST.

The mountain pine beetle, a destructive insect pest, poses a significant threat to pine trees in western North America. Without proper management, these beetles could cause severe devastation to Alberta's pine forests.

To prevent the spread of mountain pine beetles, inspecting your pine trees regularly is crucial. Look for the following signs and symptoms:

1. Boring sawdust in bark crevices and around the tree's base is a clear indicator of mountain pine beetle presence.
2. Pitch tubes, small nodules of sap resembling crystallized honey on the bark, can also signal an infestation.
3. Peel back the bark to check for live larvae. If found, your healthy trees are at risk.
4. Patches of completely red-brown or yellow-green pine trees can be observed from the air.

If you identify infested trees, it is important to promptly burn them (ensuring you have a Fire Permit if necessary). Also, maintaining your green trees' health is crucial, as a drought-stressed tree is more susceptible to beetle attacks. Adequate watering is key.

Lacombe County offers information on sprays and treatments used in other provinces to control the spread of mountain pine beetles. However, please note that the County only provides these resources for reference and does not endorse their use. These chemicals carry inherent health risks, particularly for children, and individuals using them on private lands assume full responsibility and cost.

One effective solution available at Lacombe County is Verbenone, which has been utilized in targeted applications to deter beetles from attacking valuable trees. Verbenone pouches can be attached to selected high-value trees for protection, although they do not guarantee the prevention of infestations.

How Verbenone works:

- Verbenone acts as a repellent or anti-aggregation pheromone.
- Application of repellent pheromones should be completed before beetles emerge

to search for new host trees.

- Pouches should be affixed to the north side of a tree or vertical object, out of reach from the ground. Additional pouches can be placed within a 4-5 meter perimeter around the protected area.
- Hang the pouches on the tree between June 15 and July 1, before the mountain pine beetles take flight to infest new trees.
- For optimal results, replace the pouch with a fresh one halfway through the year.

While using Verbenone can help, it is important to note that saving your trees is not guaranteed. The outcome depends on the intensity and duration of the beetle flight during July and August.

For more information on the health effects and chemicals permitted in Canada, please visit the Health Canada's Pest Management Regulatory Agency website.

By taking preventive measures and considering solutions like Verbenone, we can collectively combat the mountain pine beetle threat and protect our valuable pine trees.

Lacombe County **Verbenone** for Mountain Pine Beetle control

Between April-July, County residents can purchase Verbenone from Lacombe County for ~~\$60~~ **\$60+GST for a 10-pack**. You want to set up the patches on the north face of tree/post etc. and installed **before** the flight of the Mountain Pine Beetle (June/July).

Please call 403-782-8959 for more information or to set up a purchase.



AGRICULTURE

Winter Burn of Conifers



Shane LePage



Around this time of year, one of the most common landscape concerns people have is discoloured needles on their coniferous trees. This can be alarming and often people assume that their trees have insect or disease

problems. Most often, however, the problem is winter burn, also called winter-kill or winter desiccation. It is an extremely common problem of evergreens in Alberta (pine, spruce, cedar, and juniper) due to our severe and rapidly changing winter conditions. Occasionally, winter burn can be so severe that some trees die and require replacement.

Winter burn symptoms become apparent as the snow melts and temperatures rise in late March and April. Needles turn brown, rust-coloured, or purplish, either at the growing tips, whole branches, or sometimes entire portions of the tree. Discoloured needles begin to drop off starting in spring and continue into summer. In most cases, while affected needles die, the surrounding buds remain viable, and new growth emerges. Generally, only the most susceptible trees will die, such as those that were recently planted and did not have well-developed root systems, or those that were marginally hardy to begin with, such as dwarf Alberta Spruce.

Factors that contribute to winter burn include warm fall temperatures that delay tree dormancy, wild swings in daily temperature during mid-winter (ie. during Chinooks), and sunny winter days where needles require water but can't access it due to frozen ground. Strong winds can exacerbate winter burn due to additional water loss. De-icing salts also contribute to needle death in the spring as high salinity interferes with the roots ability to uptake water. Thankfully, spruces and pines typically produce new growth at branch tips in

spring that will replace winter burn-damaged needles over a couple of growing seasons.

What else can we do to help? Create mulched areas that extend to the edge of the canopies of the trees. Mulched areas reduce competition with grass and weeds, and protect the root zone by conserving soil moisture.

Provide supplemental irrigation to your evergreens, if practical. One word of caution is to have your irrigation water tested to ensure that it doesn't contain excessive sodium. I've encountered situations where acreage owners were slowing killing their trees with high-sodium irrigation water. Watering should be done near the drip line of the trees or slightly beyond as that is where the fine feeder roots reside. Placing a hose at the base of the trunks will not water the tree and may contribute to early trunk decay.

Avoid high nitrogen fertilizers in the late summer or fall, as they can force new growth that will not harden off properly prior to winter.

Finally, spray applications of glycine betaine can provide assistance in getting the trees through the hottest, driest times in summer, by preventing plant cells from cracking and losing water. Available under different brand names, glycine betaine is used on a wide range of crops, ornamental plants, trees, shrubs, and lawns.

**Submitted by Shane LePage,
LePage Plant Health Care,
AB Licensed Pesticide Applicator,
ISA Certified Arborist**



FOR RENT

Pasture Sprayers

**Lacombe County Agriculture Services Has
Pasture Sprayers for County Residents to Rent**



RENTAL RATE - \$50.00/DAY

DEPOSIT - \$200.00 (deposit refundable when sprayer returned in good condition)

- ❖ Pull type - 400 gallon water capacity, 20 gallon/acre coverage
- ❖ Designed for spraying range and pasture in rough terrain
- ❖ Has additional hand gun system and fence line spraying nozzle
- ❖ Simple to operate
- ❖ Can be pulled by trucks OR tractors

ATTENTION COUNTY RESIDENTS: MOWING PROGRAM

Please be mindful of what is left in the county ditches and move debris completely away or into the fence line. This will help prevent damage to the mowing equipment.

THESE ITEMS COULD INCLUDE:

- ✓ Fence Wire
- ✓ Telephone Wire
- ✓ Large Rocks
- ✓ Posts
- ✓ Any material that may cause damage

THANK YOU!

www.lacombecounty.com
403-782-8959



**LACOMBE
COUNTY**

SUBDIVISION & DEVELOPMENT ACTIVITY

May 1, 2023 to May 31, 2023
Development Applications Received

No.	File No.	Applicant	Legal Description	Proposed Development	Decision <i>(otherwise pending)</i>
1	65/23	Paul & Heather Nixon	Lot 3C Block 1 Plan 982 0463 (Milton Area)	Shop	Approved
2	66/23	Karen Magee	Lot 1 Block 1 Plan 932 2433 (Pt. SE 25-41-02-W5M)	Special event, minor <i>(Weayaya Solar Music Festival)</i>	Approved
3	67/23	Allan & Deborah Anderson	Lot 1 Block 1 Plan 232 0210 (Pt. NW 23-40-02-W5M)	Setback Relaxation	Approved
4	68/23	BURNCO Rock Products Ltd.	SE 06-41-27-W4M	Sand & Gravel Pit <i>(Renewal, Expansion)</i>	Approved
5	69/23	Richardson International Limited	Lot 17 Block 1 Plan 142 3960 (E. 23-40-26-W4M)	Agri-industrial <i>(Railway Expansion)</i>	Approved
6	70/23	Sheldon Liivam	NW 14-40-04-W5M	Dwelling w/Attached Garage <i>(Replacement Residence)</i>	Approved
7	71/23	Sebastian Oana	Lot 2 Block 1 Plan 092 9746 (Pt. SE 11-41-03-W5M)	Existing Cabin w/Sunroom Addition	Approved
8	72/23	Dwight Akkermans	Pt. SE 21-39-27-W4M	Riding and Boarding Stable <i>(Blackfalds Boarding)</i>	
9	73/23	Darrell & Susan Stang	Pt. NW 14-39-28-W4M	Community Facility <i>(Wedding Venue Expansion)</i>	Approved
10	74/23	Andy Murphy & Susan Crump	NW 01-40-22-W4M	Dwelling w/Attached Garage	Approved
11	75/23	Jacqueline Herrera	Lot 25 Block 5 Plan 932 2650 (New Saratoga, Gull Lake)	Shed	Approved
12	76/23	Delta Land Co. Inc.	Lot 8 Block 2 Plan 142 2146 (Sandy Point RV Resort)	Marina and/or Boat Rental <i>(Gas Bar, Boat Repair, Fuel Sales)</i>	
13	77/23	The Catholic Archdiocese of Edmonton	SW 13-41-01-W5M	Sign	Approved
14	78/23	Craig Dyer & David Dyer	Unit 88 Condo Plan 102 2165 (DeGraff's Resort, Gull Lake)	RV & Covered Deck	Approved
15	79/23	Dan & June Osz	Lot 19 Block 6 Plan 856MC (Birch Bay, Gull Lake)	Detached Garage w/Guest Suite	Approved
16	80/23	Doug Brown & Audra Hoover-Brown	Lot 1 Block 1 Plan 992 6669 (Pt. SW 16-39-28-W4M)	Attached Carport	Approved

Do you have
questions about
subdivision or
development
activity?

Contact Us:

Lacombe County
Planning Services
(403) 782-8389
planning@
lacombecounty.com

Dale Freitag
Director of
Planning Services

Cajun Paradis
Senior Planner

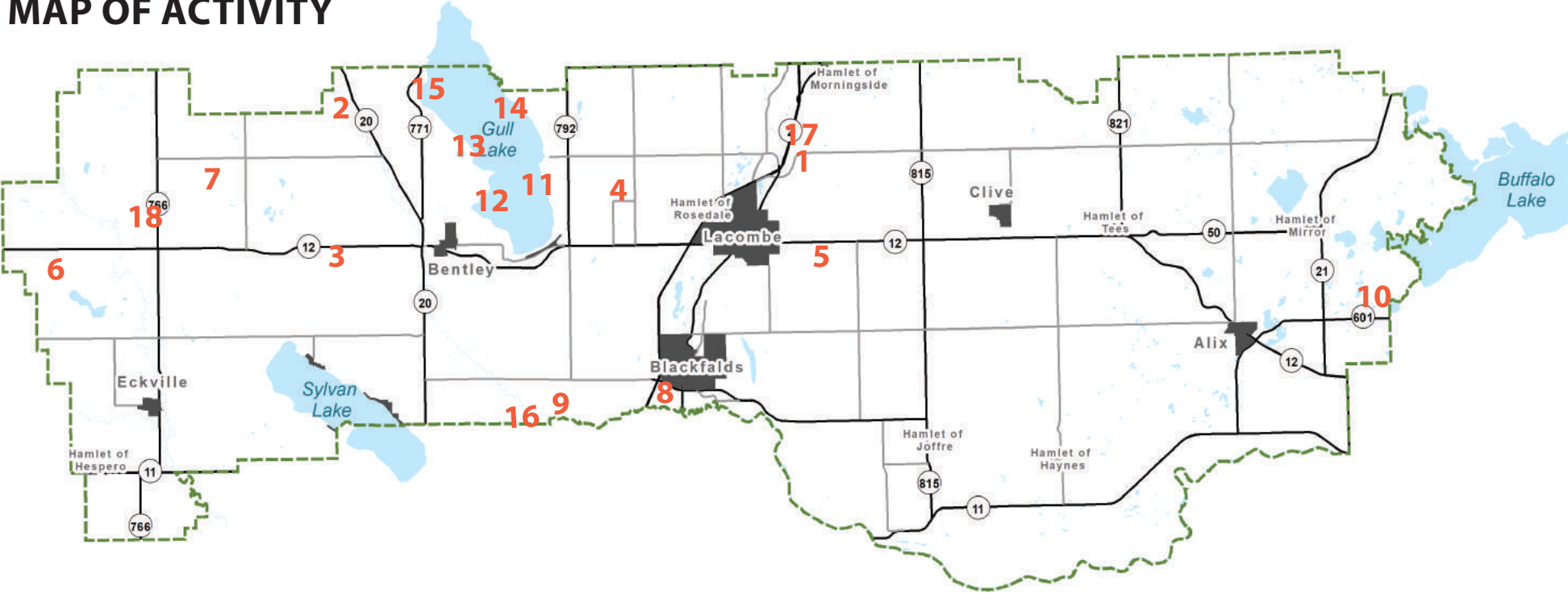
Natasha Wright
Planner / Development
Officer

Nicklas Baran
Junior Planner

Allison Noonan
Planning Services
Administrative Assistant

Daniella Gonzalez
Planning Services
Receptionist

MAP OF ACTIVITY



17 81/23 Matthias & Sandrina Wesner Lot 13 Block 3 Plan 222 0565 (Pt. NW 15-41-26-W4M) Dwelling w/Attached Garage Approved

Subdivision Applications Received

No.	File No.	Applicant	Legal Description	Proposed Subdivision	Decision (otherwise pending)
18	S-013-23	Mary Moxness	NE 28-40-03-W5M	Boundary Adjustment	

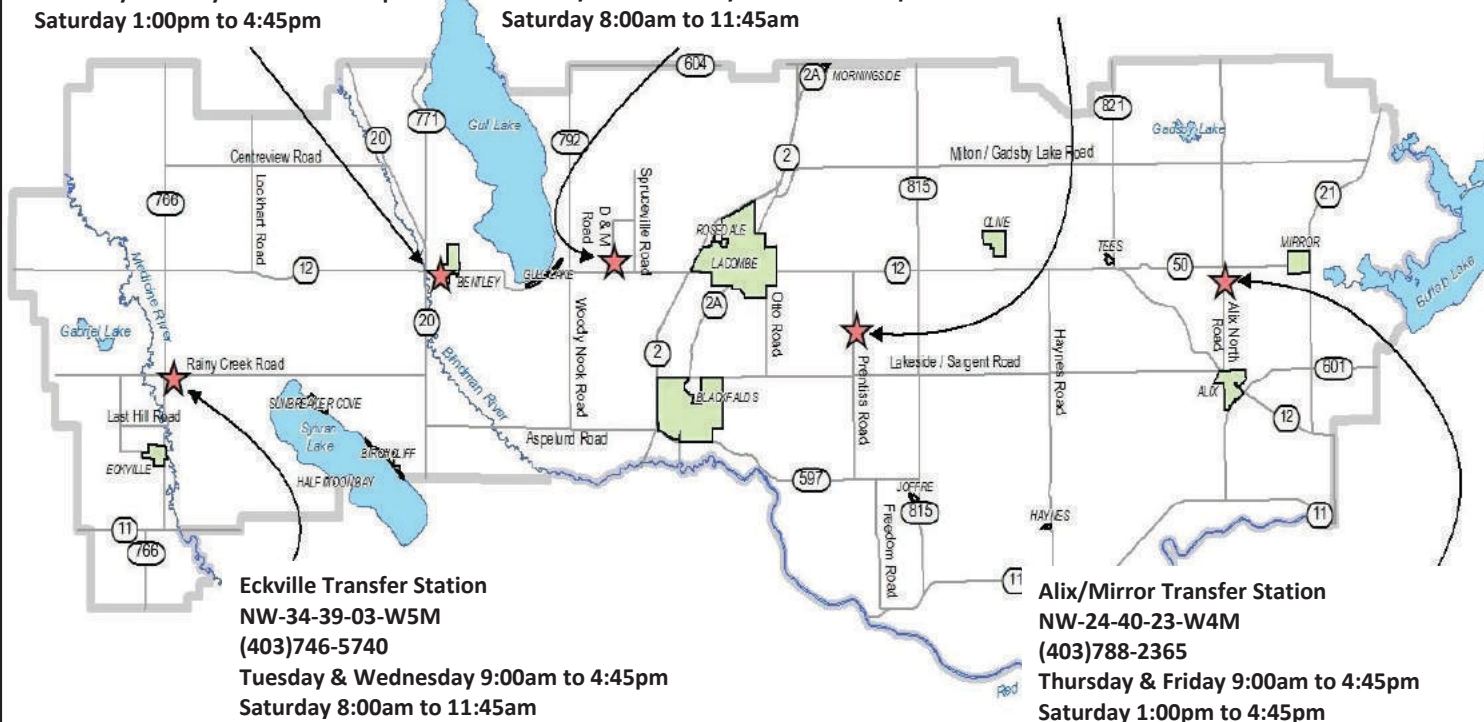


Lacombe Regional Waste Services Commission (LRWSC) Transfer Stations Hours of Operation

Bentley Transfer Station
NE-22-40-01-W5M
(403)748-3961
Thursday & Friday 9:00am to 4:45pm
Saturday 1:00pm to 4:45pm

Spruceville Transfer Station
NW-29-40-27-W4M
(403)782-2828
Tuesday & Wednesday 9:00am to 4:45pm
Saturday 8:00am to 11:45am

Prentiss Landfill/Transfer Station
NW-07-40-25-W4M
(403)782-5300
Monday to Saturday 9:00am to 4:45pm



Eckville Transfer Station
NW-34-39-03-W5M
(403)746-5740
Tuesday & Wednesday 9:00am to 4:45pm
Saturday 8:00am to 11:45am

Alix/Mirror Transfer Station
NW-24-40-23-W4M
(403)788-2365
Thursday & Friday 9:00am to 4:45pm
Saturday 1:00pm to 4:45pm

All transfer stations are closed on the following statutory holidays:
New Years Day, Thanksgiving, Good Friday, Remembrance Day,
Christmas & Boxing Day.

SHOW US YOUR GARDEN & YARDS!

Lacombe County is searching for photos of beautiful gardens and yards in Lacombe County.

If you would like to share photos of YOUR garden or yard, and maybe some tips for new gardeners, please contact Nicole at communications@lacombecounty.com. Submissions will be shared online and in the County News.



Planning Services

Frequently Asked Questions



YOU HAVE QUESTIONS

SUBDIVISION in Lacombe County

WE HAVE ANSWERS



Subdivision is the process of taking one parcel of land and legally separating it into two or more parcels, each with separate titles and ownership rights. This article aims to inform County residents of the County's subdivision policies in the Agricultural 'A' District.

How were the County's subdivision policies created?

In 2017, Lacombe County adopted a new Municipal Development Plan using extensive feedback from the community. The community indicated that subdivision opportunities are needed to sustain the rural lifestyle, but need to be balanced to ensure large tracts of agricultural lands are preserved for the benefit of future generations. This feedback determined the subdivision policies that were adopted through the Municipal Development Plan.

What types of subdivisions are possible in the Agricultural 'A' District?

There are three types of subdivisions that may be considered in the County's agricultural areas.

- First parcel out subdivision
- Agricultural parcel subdivision
- Fragmented parcel subdivision

These are described below.

First Parcel Out Subdivision

A first parcel out subdivision provides an opportunity to create a separate parcel on an unsubdivided quarter section where an established dwelling already exists. To be eligible, the quarter section must be unsub-

divided and must have had a habitable permanent residence on site for at least five years preceding the date of the subdivision application.

The parcel cannot exceed a size of 1.62 hectares (4.0 acres) in size unless the County determines that a larger size is required to accommodate residential improvements or is reasonable based on the site's topographical features. If a larger size is considered warranted, the maximum size of a parcel that can be approved by the Subdivision Authority is 2.2 hectares (5.5 acres).

To minimize the loss of agricultural, cultivated land cannot be included in the subdivided yard site.

Agricultural Parcel Subdivision

An agricultural parcel subdivision allows an agricultural producer of a specialized or intensive agricultural operation to create a smaller parcel where an entire quarter section is not required for the operation. To be eligible, the quarter section must be unsubdivided. Examples of a specialized or intensive agricultural operation can be greenhouse complexes, horticultural operations, specialty breeding facilities, etc.

The specialized or intensive agricultural operation must be operating on the site for longer than one year prior to subdivision approval. When applying, the business operator must submit an adequate, detailed business plan that may include a financial plan to verify the existence of the business.

The parcel must be at least 4.05 hectares (10 acres) in size.

Fragmented Parcel Subdivision

If two or three parts of a quarter section are physically severed from each other, with no physical access between the parts, a fragmented parcel subdivision can be considered by the County. Examples of a fragmenting feature would include a highway, County road, railway, or permanent or naturally occurring body of water.

In the case of a permanent or naturally occurring body of water, the feature must be permanent in nature with a visually defined riparian area where the vegetation and soils are strongly influenced by the presence of water OR written confirmation from the Government of Alberta that the title to the bed and shore of the waterbody is vested in the Crown in the right of Alberta. If these criteria are not met, the land is not considered fragmented and subdivision is not possible.

A fragmented parcel subdivision may result in no more than three titles per quarter section.

What if I live in a multi-lot residential neighbourhood or hamlet?

If you are in a residential neighbourhood or hamlet, the policies highlighted above do not apply. Subdivision policies vary by District. Depending on lot size, resubdivision may be possible. Please contact Planning Services at planning@lacombecounty.com and 403-782-8389 if you would like more information.

BUSINESS FEATURE: Range-Road Enterprises



As they say, 'necessity is the mother of invention' and the story of Range-Road Enterprises proves that true. Their first piece of equipment was a log splitter when two friends decided there had to be a more effective way to split firewood that would save their bad backs! After the first firewood processors in 2011, they began designing portable sawmills, woodchippers, ATV trailers, and other small farm equipment. They now supply products to over 40 dealer locations across North America, or cus-

tomers can purchase their equipment directly.

Over the last 13 years, this hobby turned into a business that employs 4 family members full-time along with a few other part- and full-time employees. Robyn Darling, Marketing Manager for Range-Road, shared, "Our business has grown more than we could have imagined, and we may now have a future for our children/grandchildren to learn the 'family business'." Through the company's growth, they can offer sustainability and job stability for their family and employees.

Their world headquarters are located on the east side of Lacombe County, just outside the Town of Eckville where they do all product design and testing. According to Robyn, Lacombe County is a great place to do business because of its supportive, rural community. With over 1000 farms in the County, it's also an ideal place

to locate a company that manufactures farm implements.

Range-Road has embraced the digital economy by offering online sales and has active Facebook and Instagram accounts. Current and future customers can also learn about different equipment by watching short product videos on their YouTube channel! These digital tools are critical for a business that sells nationally and are an effective way to engage with customers and market their products.

Even the best-laid plans don't always turn out the way you expect. A crucial lesson the team at Range-Road has learned is to 'expect the unexpected,' which is a good rule of thumb for any business, from the smallest solo venture to the largest corporation. Their initial plan was to solve one problem, and 11 years later, they continue to innovate and provide solutions; sometimes, reality will exceed your plans!

Working within the ag industry provides an opportunity to work with many different people by meeting specific needs. As more people explore a simpler way of life and alternatives for doing things themselves, companies like Range-Road have the privilege of educating the public and supplying the necessary tools. As these trends continue, they are always looking at their needs to meet their customers' requests.



ECONOMIC DEVELOPMENT

LACOMBE COUNTY SPOT *light*

Produce lovers are in for a treat just east of Lacombe. Billyco Junction, operated by Bil and Edie Biel, offers fruit, vegetables, and delicious homemade products from late June through October each year. Providing a country experience to others is a joy that comes with their rural location, and the Biels are happy to share it.

Once open, their daily hours are 7 AM-8 PM, seven days a week, allowing pickers to arrive early in the morning, in the afternoon heat, or in the cool of the evening. The gardens are spread out to provide a unique experience – one that is quiet and private. While enjoying the fresh air, birds, and exercise, customers gather clean and delicious food for summer meals and winter

freezers from the outstanding variety found at Billyco.

A favorite for many regulars is 'date night' at the gardens. Couples can enjoy a peaceful country evening together while they select some sweet treats; the only challenge will be choosing between all the beautiful options. New this year, the gardens will also feature a u-pick flower garden which is the perfect way to round out your date night activity.

The U-pick was established in 2010 when the Biels decided they were ready for a change. After 23 years of running a hog operation, Bill and Edie retired from that side of farm life and started planting fruit trees. Their first harvest included strawberries, raspberries, and some vegetables. In the last 13 years, they've expanded exponentially and now offer a large variety of fruits and vegetables, a list too long to include but is found on their website. Customers can also purchase products made with farm-grown produce like fruit pies, jams and jellies, pickled veggies, and dried herbs and flowers. You can also pick up your local raw honey and maple syrup – straight from Quebec!

The Biels love their location in the heart of thriving Central Alberta. On day trips, they get many people from the surrounding area who might also be checking out local museums, lakes, or attractions like Ellis Bird

BILLYCO JUNCTION



Farm or Wolf's Botanical. The infrastructure of paved roads out to their property means an easy commute, even for city-dwellers who want to venture out. The land, water, and weather typically cooperate to produce excellent yield and variety.

Edie shared that one lesson they've learned is not to delay what you can do today—also, getting up early, which helps with the first one! They've also found that people genuinely love and appreciate what they do, which makes the work all the more rewarding.

Find Billyco Junction online:

Website <https://billycojunction.com/>

Facebook: Billyco Junction Gardens

Instagram: @billycojunction1



COUNCIL HIGHLIGHTS

May 23, 2023

PUBLIC RELATIONS COMMITTEE REPORT

As discussed at the May 11, 2023 Public Relations Committee Meeting, the Lacombe and District Chamber of Commerce is proposing a new process for the Farm Family of the Year Award. By resolution of Council, Lacombe County will adopt sponsorship of the Farm Family of the Year Award for 2023, including marketing the award, collating nominations, and establishing a criteria process for choosing a winner. The winner's name will be submitted to the Chamber for presentation at the Chamber Awards Gala in October.

PALM BAY ENCROACHMENT

Council was provided with information regarding the encroachment onto Environmental Reserve lands at Lot 3 of Palm Bay. Consideration of the request from Mr. Stout and Mr. Jardine that an encroachment agreement be issued for the alterations and encroachment was deferred to a Council meeting subsequent to the June 6, 2023 Committee of the Whole Meeting.

MIRROR UTILITY UPGRADES

Council was advised of a recent situation in the Hamlet of Mirror whereby a resident experienced sanitary sewer effluent surcharging through drains in their home. Upon inspection by the Utilities Department, it was determined that the issue was caused by a shallow sewer main that froze and caused effluent to back up into the residence.

By resolution of Council, upgrades to the Mirror 52nd Street south sanitary sewer system will be completed at a cost of \$ 59,768.17. The upgrades will be funded through the Hamlet of Mirror Utility Reserve.

EN (10) RURAL CRIME WATCH POLICY

Amendments to the EN (10) Rural Crime Watch Policy received Council approval.

2021 & 2022 TAX SALE (PUBLIC AUCTION) FOLLOW-UP

On November 19, 2021, the County held its annual tax sale via public auction. This auction, held in accordance with section 418 of the Municipal Government Act,

involved five properties with outstanding (for more than two years) property taxes. The five subject properties are located in Mirror and vary in location, services, and zoning. No bids were received at the auction for any of the properties.

In accordance with section 424 of the Municipal Government Act, the County has the authority to have these properties transferred into the name of the County if no one purchases the properties through the tax sale process. By resolution of Council, Lacombe County will acquire title to the following properties:

Lots 1-4, Block 10, Plan 7159AI, Lots 5-10, Block 10, Plan 7159AI, Lots 9-10, Block 13, Plan 7159AI, Lot 37, Block 40, Plan 0728572, Lots 1-5, Block 88, Plan 7159AI, and offer them for sale in accordance with Municipal Government Act.

VESTA ENERGY

Council was provided with a presentation and activity update from Thomas Everett and Mark Lansing of Vesta Energy.

Local firefighters lend a hand during provincial forest fires



Eight Members of the Lacombe County Fire Service from Bentley, Clive and Lacombe deployed to Fox Creek to assist with the Eagle Wildfire in May. Members were part of a large contingent of resources from around the Province that assisted with this wildfire



Council Highlights & Minutes can be found on our website at www.lacombecounty.com/en/our-government/agendas-and-minutes.aspx



Regularly Scheduled Meetings for Lacombe County Council

Committee of the Whole - First Tuesday of every second month at 9 a.m.

Council & MPC - Second and fourth Thursday of every month, starting at 9 a.m..

The public and media are welcome to attend all Council & MPC meetings. An agenda will be posted to the website prior to the meeting.

Why do police leave their car running when they are not in it?

First, there is an officer safety concern. All police vehicles have locators. Dispatch centers can see where the police are at all times. They can see the location of other members working. The locator requires power to operate. Many dispatched calls are sent through the in-car computers. The in-car computers are very much like a personal computer at home. A member powers up the computer at the start of their shift, the normal power up sequence begins, then the member will login to all the programs with their specific user name and passwords. Once all the programs are up and running, they are visible to dispatch and other resources. They can run files and check the mapping system for pending complaints.

The in-car camera must also be powered up and a login sequence completed. This is a separate computer system and stores video and audio during police contacts, pursuits and other emergency situations. With all the computer systems and radio equipment on board the patrol vehicle, batteries are quickly drained if the car is turned off. If the vehicle is shut off, the officer would have to restart the computer systems all over and login. In an emergency there is no time to do this.

The vehicle's interior must also be kept warm in the winter and cool in the summer because of portable equipment inside. Several items in the vehicle have batteries and they may not function properly in extreme conditions when the batteries are too cold or hot.



Lacombe and District
Chamber of Commerce

2023 CHAMBER AWARDS

This year, as part of the annual Chamber Business Awards we would like to celebrate the best businesses in Bentley, Clive, Eckville!

Do you have a favourite local business?

This could be:


- Your favourite Bentley, Clive, or Eckville store
- A company with the friendliest staff
- A business that does a lot for the community
- A company that has a great reputation, reaching beyond Central Alberta,
- A local company that is a leader in its field

NOMINATE Farm Family of the year through Lacombe County

Nominations will be open NOW until midnight on Friday, July 7th 2023

To nominate a business please either go to www.lacombechamber.ca or drop an email to info@lacombechamber.ca

The winner will be announced at the Chamber Gala on Friday, October 20th



CHAMBER AFTER HOURS

JOIN US FOR OUR FIRST 2023 CHAMBER AFTER HOURS EVENT. THIS NETWORKING EVENT WILL BE HELD AT THE LACOMBE MEMORIAL CENTRE ON JUNE 27TH FROM 6PM-9PM, IN THE COUNTY ROOM

WE HAVE THE CAPACITY TO PROMOTE 10 BUSINESSES(\$80 A TABLE). THIS WILL BE A FANTASTIC NETWORKING OPPORTUNITY FOR ALL OF THE CHAMBER MEMBERS.

TUESDAY JUNE 27TH, 2023
6PM-9PM
COUNTY ROOM, LACOMBE MEMORIAL CENTRE
403-782-4300
jeff@lacombechamber.ca



Paid Parking Program

REMINDER: the Paid Parking Program is in effect from May - September at the following locations



Sandy Point Beach

\$3/hour

OR

\$15/day for parking at Sandy Point Beach.



Boat Launches

\$10/day to launch only

\$20/day launch and park

Applies to:

Sandy Point Boat Launch
Sunbreaker Cove Boat Launch



Annual Pass

- \$120/year Sandy Point Beach Parking
 - \$160/year Boat Launch & Parking
 - \$80/year Boat Launch ONLY*
- (*doesn't include parking)

Questions? Prepay? Visit www.lacombecounty.com/paidparking

Ribbon cutting for NEW playground in the SV of Gull Lake



On Sunday, May 21, the residents of The Summer Village of Gull Lake and invited guests attended the Ribbon Cutting for the official opening of the new playground.

The new playground was made possible by the generous donations from the Summer Village Residents, local businesses as well as grants from the provincial government as well as the County of Lacombe.

Councillor Allan Wilson attended the Ribbon Cutting on behalf of Lacombe County.



Beach / Boat Launches Paid Parking Program: PAYMENT OPTIONS



Online parking payments for BEACH and BOAT LAUNCH



Lacombe County's Paid Parking Program came into effect on May 1 at the Sandy Point Beach Parking Lot, and the Sandy Point & Sunbreaker Cove Boat Launches.

For details/questions on the parking program, visit <https://www.lacombecounty.com/paidparking>

PARKING PAYMENT INFO

There are four ways that you can pay for parking:

1. Park with the app: Download the HotSpot Parking App on your smartphone to set up an account.
 - Create an account
 - Tap the "Parking" icon
 - Enter the 4-digit code on the sign
 - Choose your length of stay
 - Pay
2. Park with the Fast Tap signs: Use your smartphone to scan the QR code on the signs in our parking lots and pay
 - Scan the QR code with your

phone's camera

- Enter your license plate number
 - Choose your length of stay
 - Pay with Apple Pay or Google Pay
3. If you don't have a Smartphone: You can pay online at home (home computer, laptop, iPad, etc.) before your visit.
 4. Lacombe County Administration Building: You can also pay for parking in-person at the Lacombe County Administration Building during regular business hours (Monday to Friday, 8:00 am – 4:30 pm).

PLEASE NOTE: There is NO guarantee that you will get a parking spot if you pay for parking from home or at the County office so, please be sure to arrive early.

I'M HAVING TROUBLE PAYING FOR PARKING. WHO SHOULD I CALL?

If you are having problems with the HotSpot app or Fast Tap option, please contact Hot Spot Support Team DIRECTLY at 1-855-712-5888 or email support@htsp.ca.

You can also learn more about the company and how Hot Spot works, or find technical support online, at www.htsp.ca.

The End of an Era Sargent Community School/Centre

The former Sargent Community Centre was established in either 1900 or 1901 (conflicting stories in history books) as a one-room school. As in many rural schools, the school was named after an early pioneer family living in the area at the time. As the 1st and 2nd World Wars occurred the Sargent Community residents fluctuated as our valiant servicemen left and returned to this area. After the 2nd World War, a lot of the land was purchased by the returning veterans. This school served the community as a school, church and community centre until its official closing as a rural school, when centralization was established and it was closed as a school in 1956. The school was purchased from the municipality as a community centre where cherished memories of social events occurred. Since it was a rural hub, it was a "rockin' place for dances, card parties, picnics, bingos, Christmas concerts, pancake breakfasts and other fun times as the years slipped by. The Sargent Ladies Aid groups held monthly meetings, quilting bees, catering for weddings, Mother's Day Tea and other events, until their numbers dwindled and they disbanded in 2015.

This school and its property were recently sold because the same small number of people were left to maintain the school and yard. It was decided thru many anguishing meetings to finally close its doors. Some of these reasons are (not inclusive) everyone is more mobile and families could attend more events in larger centres, larger farms with fewer people, and the ageing rural population left the community getting smaller and smaller.

Several avenues were sought to sell the building and property. The final solution was to sell it by online auction. We will disband as a society, and as per our constitution, it was voted to disperse the money to 8 designated community and educational organizations. The Sargent Community thank you for your participation in any of the events that we held. Memories are all that is left of this rural landmark. We thank former generations for their dedication in maintaining a part of Alberta's rural heritage.



Internet Child Exploitation (I.C.E.) Unit presents at local crime watch meeting

The Red Deer/ Lacombe RCW held their AGM on April 29, 2023, at the Lacombe County Office (40403 RR 274 Lacombe County).

The AGM began at 10:00 with introductions of the Red Deer/Lacombe RCW board and greetings from Reeve Barb Shepherd (Lacombe County). This was followed by their guest speaker Sgt Kerry a member of the Northern Alberta Internet Child Exploitation (I.C.E.) Unit, which investigates incidents of child luring, sextortion, possession, transmission, and the making of child pornography as well as internet-related voyeurism involving youth. He discussed the role of I.C.E. in Alberta, current applications and internet platforms and provided resources for our



group to share so parents/teachers are able to develop healthy and productive on-line experiences for children and teens. The internet plays an integral role in everyone's lives, and when it comes to youth, their social lives exist largely in cyberspace. Over the past several years and through the COVID-19 pandemic, Alberta has seen a significant increase in child exploitation cases on the internet. With more online users than ever, and new apps and software being developed every day, it can be difficult for parents and teachers to keep on top of the latest trending platforms. Advancements in technology are exciting and helpful, but it opens an ever-growing gap between the knowledge of that technology between youths and busy adults.

His presentation focused on education, prevention and ensuring parents and educators are able to protect their children from online sexual exploitation. Kerry also provided the group with a list of resources for understanding social media sites. The sites contain educational material and information for parents and teachers and are easily navigated. As he noted the resources he provided were only a starting point, and he advised the real challenge is to build a healthy relationship with our youth and children in order to foster a safe and trusting environment for them to report anything to their parents or teachers when they go wrong online.

It was a great presentation and well worth bringing Kerry to speak in your community. Kerry's email is kerry.shima@albertaicenorth.ca, and his direct line is 780 509 3298 if you want to schedule a presentation.



AFIN
ALBERTA FORAGE
INDUSTRY NETWORK

Scan to Register



JOIN US FOR A CHAT...

AFIN IS HOSTING A DISCUSSION ABOUT THE CURRENT DROUGHT SITUATION IN ALBERTA AND THE MENTAL HEALTH IMPACTS IT CAN HAVE ON THOSE FACING DIFFICULT DECISIONS AND STRESSES

TUESDAY JUNE 20 - 7PM - 8:30PM

PARTICIPATION IN THE WEBINAR IS FREE

AFIN Sustainable Forages Series - Drought Resilience Perspective for Forages

This webinar series is urgent to attend now! We understand the difficulties that Albertans are facing with the lack of rain so far this season and want to provide some insight and information on how you can cope.

REGISTER NOW

Join us for a chat about the current drought situation in Alberta and the mental health impacts it can have on those facing difficult decisions and stresses. Program Director Linda Hunt from AGKNOW will join us to discuss strategies for cow calf operations to deal with potential drought, including coping with the mental stresses that can arise. We'll explore solutions for challenges such as selling off part of a herd, purchasing expensive feed, and managing short and long term financial stress caused by drought. **This webinar is free to attend** and will be posted on our website, youtube and Podcast platforms after for you to listen to and share.

REGISTER AT: https://us02web.zoom.us/meeting/register/tZclf-murj0qGNBL3GKtKzAPj3LC_0Gx5N6G



Bentley & District Ag Society Town & Country Fair August 8 - 13th, 2023

Salute to 60th Anniversary of the Bentley Fair & Rodeo Parade:

Organized by the Sunset Hills Riding Club

Thursday, August 10

10:00 am Museum Open
1:00 pm Parade
2:00 pm Bench Show
3:00 pm Junior Rodeo

Friday, August 11

7:00 am Pancake Breakfast
10:00 am Museum Open
10:00 am Bench Show
12:30 pm Bench Show Presentations
6:00 pm Rodeo



Saturday, August 12

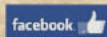
7:00 am Pancake Breakfast
9:00 am Kroozin' West Show & Shine
10:00 am Museum Open
11:00 am Bentley Fire Department BBQ
11:00 am Bentley Library Petting Zoo
2:00 pm Bentley Farmer's Market
6:00 pm Rodeo
9:00 pm Cabaret Dance
10:15pm Fireworks
Dusk Drive-In Movie

Sunday, August 13

10:00 am Church Service
10:00 am Museum Open



For dates and times of all events. www.bentleyagsociety.com Like us on



If your child attends school in:
Lacombe * Bentley * Clive * Alix
You may qualify for
Tools for School!
APPLY IN JULY!!!

DEADLINE TO ORDER IS JULY 30, 2023

**CONTACT 403-782-6637 OR
WWW.LACOMBEFCSS.NET**



School Start
Back to School with School Start

Information collected that you provide to Lacombe & District FCSS is collected under the authority of the Freedom of Information and Protection of Privacy Act (FOIP) Section 33(c). This information will be used for the purpose of the "Tools for School" program. Your personal information is protected from unauthorized access, use and disclosure under Part 2 of the FOIP Act. Questions regarding this collection of personal information may be directed to info@lacombecfcss.net or 403-782-6637

TRY OUT

DND

MARY C. MOORE PUBLIC LIBRARY
LACOMBE, ALBERTA
AT THE LIBRARY

What:

- ☐ A Six Session Introduction to Dungeons and Dragons

Who:

- ☐ Teens aged 13+
- ☐ Beginners as well as experienced players welcome

Where:

- ☐ Kinsmen Program Room above the library

When:

- ☐ July 22 & 29; August 5, 12, 19 & 26
- ☐ Six Saturdays in July and August
- ☐ 3-5PM

Other Details:

- ☐ No supplies needed
- ☐ Registration required: Sign up via the link on Facebook and our website, or at the circulation desk
- ☐ Free!
- ☐ Space limited to 7 players for this intro session



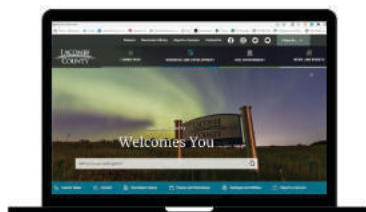
STAY IN THE KNOW!



<https://subscribe.lacombecounty.com/Subscribe> to
receive emails on:

News/Announcements Events
Council Meetings
Safety Alerts
Construction Notifications

OR...subscribe to individual pages of
interest



Bentley Stay & Play
 Located in the basement of Town Office
 We **WELCOME** all Families/Caregivers
 with children 0-6 and older children on PD days
Fridays 9:30 to 11:30
 Contact Community Services 403.748.2160
 OR our facilitator Miss Carolyn
 403.704.3315 parentingproactively101@gmail.com






BENTLEY BOUTIQUE
 Use west entrance beside bay door.
 Bentley Long Term Care Facility
 4834 - 52 Avenue, Bentley
Open Tues/Thurs 10-12 & 1-3

Items for all ages & sizes.
 Next to new clothing donations welcome!

Volunteer Coordinator Sandy
 403.318.0270

Bentley Community Services
 403.748.2160




CAMP L.G. BARNES needs YOUR help!!

We are seeking volunteers to come and help us provide a camp experience to Albertan's with disabilities, as well as those with mobility issues.

Volunteers are needed to fill the following positions:

- Kitchen (meal prep and clean-up)
- Animal Care – Feeding, cleaning, walking
- Crafts & Water Activities
- Facilities – Lawn care as well as general camp duties
- Support for our guests – Come and have fun sharing our camp with our visitors.

If you are looking to enjoy the outdoors, or are wanting to help ensure that visitors receive the best possible care, please email info@lgbarnes.org or call (403) 748-4211.

All volunteers are required to obtain a Criminal Record Check & Vulnerable Sector Check. We can also assist with Canada Food Safe Handling Certification, as well as First Aid if necessary.

We want to ensure that all of our volunteers are serving in an area that they feel best suited.

Please consider the area you would like to assist, and please let us know ASAP. Our summer is full, and we need the help.

Phone: (403) 748-4211
Email: info@lgbarnes.org
www.lgbarnes.org

BURMAN UNIVERSITY

Micro-Credential Program

Increase your chances for success by learning practical business skills that employers are looking for.



Learn more or apply today at yoursmallbusiness.ca/microcredential



Funded by 

Mary C Moore Public Library

Family Craft Night

July 6 @ 6:30 pm
 Spend some time getting crafty...together!

This program is for parents/guardians and kids ages 6+
 Registration required.
 \$5/family
 Contact: Miranda
miranda.cl@prl.ab.ca
 403-782-3433



Nailed It! PAINT NIGHT

Compete with your friends to recreate a painting using whatever painting skills (or lack of) you have!
 Not a typical "Paint Nite" lesson, everyone will paint with no instruction.
 It will be a night of pure painting fun and entertainment. Plus: prizes will be awarded for the top 3 favourite paintings.

JULY 21
6:30-9:00PM
 KINSMEN ROOM, LMC
 PRESENTED BY MARY C. MOORE PUBLIC LIBRARY

For Adults
 Registration Fee: \$15/person
 Payment required ahead of program
 Register online, in person at the library or phone:
 403-782-3433



MARY C MOORE PUBLIC LIBRARY

SUMMER Reading Program

CHECK IT OUT!
 FUN & CREATIVE
 ACTIVITIES FOR KIDS AGES 2-13
 NO REGISTRATION REQUIRED

Schedule:
 Age 2: Fridays 10-11 *parent/guardian required to attend
 Ages 3-5: Tuesdays 1 hr program, 10am, 11am, 1pm, or 2pm
 Ages 6-8: Wednesdays 10am-12pm or 1pm-3pm
 Ages 9-13: Thursdays 10am-12pm or 1pm-3pm

Ages 3-5, 6-8, & 9-13 are all "drop off" programs and parent/guardian are not required to attend
 attendance is capped at 30 kids/session

IN PARTNERSHIP WITH THE TD SUMMER READING PROGRAM

lacombelibrary.com



lacombe memorialcentre

The perfect place for people to connect.

Book your upcoming event now!

- training/workshops • meetings
- anniversaries • weddings
- celebrations of life • exercise classes

Visit www.lacombe.ca/lmc or call 403-782-6668

Home of Anna Maria's Cafe, Mary C. Moore Public Library, Lacombe & District FCSS and the Lacombe & District Chamber of Commerce.

Need financial assistance with room rentals?
 See if you qualify at lacombe.ca/grants



HOME SUPPORT SERVICES FOR SENIORS

Home Support is available to eligible seniors needing assistance with light housekeeping in Lacombe and Lacombe County.

✓ Trained & screened Home Support Providers
 ✓ Weekly
 ✓ Bi-weekly,
 ✓ Monthly

Services Offered

- Laundry
- Kitchen
- Bathrooms
- Living Rooms
- Dusting
- Mopping
- Vacuuming
- Meal prep assistance

Contact Lacombe & District FCSS:
 (403) 782-6637

Supported by:   



AROUND THE COUNTY



servus
credit union

PUBLIC LIBRARY
BLACKFALDS

Open:
Mon. & Wed. 10am - 8pm
Tues., Thurs. & Fri. 10am - 6pm
Sat. 10am - 5pm
Sun. 1pm - 5pm

We have a lot of exciting free winter programs for all from babies to adults. We have a new program just for Seniors! Check out our socials for our current program calendars and pop up events.

Memberships are free at The Blackfalds Public Library for Blackfalds and Lacombe County residents!

@BLACKFALDSLIRARY



Located in the Eagle Builders Centre
5302 Broadway Avenue
403-885-2343



fcss
Lacombe & District
Family and Community
Support Services



vesta
CAMPERSHIP
PROGRAM

The Campership program subsidizes fees for families that qualify with children & youth 0-18 years to participate in Summer Camps. Applicants must reside in the City & County of Lacombe. Applications must be submitted May-Aug each year. Funds are limited to \$200 per child/youth per year.

Call 403-782-6637 or email fcssyouth@lacombefcss.net for more info & application forms

WHAT WE DO

Alix and Area Community Resource Centre

Activities & Highlights

New Baby Clinic Information!

Every 3rd Wednesday appointments can be made, to book routine child immunizations. Please call: Stettler Health Unit, 403-742-3326.

Senior's Week 2023-

We appreciate and celebrate our seniors and all of the contributions they provide our community. 'Pop' in for a treat and fun activity! June 5 to 8, 10AM-4PM. All local seniors are invited!

AHS Preschool Flouride: June 13-

By appointment only, please book your spot. For more information email: karen.white@mcmancentral.ca.

NEW!-

Fresh veggies are delivered weekly to the Centre, typically available for pick-up on Tuesday mornings. Thank you Pic N Pac for the generous donation! Free for everyone and while quantities last. Please limit to one bag per person to help items go further.

Monthly Grief Support Group-

Gather with others who are experiencing loss. All ages are welcome. Hosted monthly on the 3rd Thursday, 7PM. Meet next on June 15.

Connecting Clans: Welcome Summer!

The next event is on June 26, all ages are welcome! Every month there is a new activity planned, attend on the last Monday, from 6:30PM-8:30PM. Held at the Community Connections Activity Centre (Bay 2).

Services Available

- Information & Referral
- Resource Navigation
- Volunteer Services
- Family Wellness
- Meals on Wheels
- Home Support
- Community Services
- Adult Learning
- Alix Food Bank
- Wise Owls

alixmirrorwellness@gmail.com

Follow us on Facebook
@AlixandAreaCommunityResourceCentre

www.alixcrc.com



Monday to Thursday



10:00 AM - 4:00 PM

Closed all statutory holidays

Bay 1, 5008 50 Ave, Alix, AB

403-396-3369



KidSport
Oil Country
Hockey Assist
Program



GET YOUR KIDS IN HOCKEY

The KidSport Oil Country Hockey Assist Program wants to get kids out of the stands and onto the ice by alleviating the costs associated with playing hockey! Eligible families will get their registration fees covered and gain access to no-cost equipment through Sport Central. #SoALLKidsCanPlay

LEARN MORE AT KIDSPORTHAP.CA



AROUND THE COUNTY

Make a SPLASH

at the Kinsmen Aquatic Centre
5429 53rd Street, Lacombe AB

What's Happening at the pool:

- Summer program registration is OPEN!!!
- June 18 - Father's Day-Fathers swim for free
- June 17-24 - National Drowning Prevention Week
-Activities at the pool to raise awareness of drowning prevention
- July 1- Canada Day - Public Swim 1:00-5:00 pm only.

For more information on the KAC schedule, pool rentals and advanced courses call 403.782.1277 or visit www.lacombe.ca/pool.



MUSIC in the park

EVERY WEDNESDAY 6:30 PM
AT THE ECHO STAGE, LACOMBE MEMORIAL CENTRE

JUNE 7: RANDI BOULTON
JUNE 14: FLAT IRON JAZZ BAND
JUNE 21: STRINGS GALORE
JUNE 28: MEMPHIS MAFIA
JULY 1: BLUEPRINT
JULY 5: FLASHBACK FREDDY
JULY 12: ALECIA AICHELE
JULY 19: FUNHOUSE
JULY 26: THE ROJO'S
AUGUST 2: BOOTS & THE HOOTS
AUGUST 9: BOBBY GOSSE
AUGUST 16: SQUIDJIGGER
AUGUST 23: KAYLA WILLIAMS & THE YACHT DADDIES
AUGUST 30: TAP9

LACOMBE PERFORMING ARTS CENTRE
vesta
servus credit union
FLAT IRON JAZZ
LACOMBE COUNTY
CITY OF LACOMBE
LACOMBE Ford
SUNSHINE 94
St. Andrew's United Church

VISIT LACOMBEPAC.COM FOR MORE INFO

CREATION STATION

Saturday, July 15
11:00 am - 3:00 pm
(while supplies last)
South Centennial Hall/Lest We Forget Park
Lacombe Memorial Centre - 5214 50th Ave
(Held during Lacombe Days)

This summer event offers families the chance to enjoy creating art. Come out & make some fun crafts. There is something for everyone. Stop by and explore the possibilities!



For more information contact 403-782-1263

Discover arts and culture

Step back in time with a walking tour of Lacombe's historic downtown murals.

We have literally 'painted the town' with images showcasing our rich and colourful history. Experience them all through a self-guided walking tour through the alleyways of our picturesque Edwardian-era downtown. Pick up a brochure at the Flatiron Museum and Interpretive Centre, or at City Hall.

For more information visit www.lacombe.ca/culture or call 403-782-1258.

ARTS.CULTURE.EVERYDAY.
www.lacombe.ca/culture

Walking Tour Map of the Murals



gull lake centre

www.gulllakecentre.ca

Summer Camps

Summer is calling!
Discover camps for kids ages 5-18, just 15 minutes outside of Lacombe.
Sign up now at gulllakecentre.ca

SUMMER

ARTS & CRAFTS CLUB

FOR ADULTS @
MARY C MOORE PUBLIC LIBRARY

JULY 11 & 25, AUG 8 & 22

2:30pm
Fee: \$5/person per session

July 11: Beaded Bracelets and mini Macrame
July 25: Watercolour Art
Aug 8: Shibori Fabric Dyeing
Aug 22: Resin Bookmarks

GET CREATIVE WITH US THIS SUMMER!

Register with Miranda: miranda.cl@prl.ab.ca,
online or in person at the library
lacombelibrary.com

Follow us online, and stay up-to-date
on Lacombe County news, events
and other information!



[facebook.com/
LacombeCounty](https://facebook.com/LacombeCounty)



[instagram.com/
lacombecounty](https://instagram.com/lacombecounty)



[twitter.com/
LacombeCounty](https://twitter.com/LacombeCounty)



[youtube.com/
LacombeCounty](https://youtube.com/LacombeCounty)



[www.lacombe
county.com](http://www.lacombe
county.com)

JULY 2023

Sun	Mon	Tue	Wed	Thu	Fri	Sat
25	26	27	28	29	30	JULY 1 CANADA DAY
2	3 OFFICE CLOSED (in lieu of Canada Day)	4	5	6	7	8
9	10	11	12	13 County Council 9AM	14 County News Submissions Due	15
16	17	18	19	20	21 County News Published	22
23	24	25	26	27	28	29
30	31	AUG 1	2	3	4	5

Help us promote
YOU!



Do you know a **business, person, place or volunteer** you want to see profiled in County News?

Do you have a photograph you want to share?

If so, email **communications@lacombecounty.com** with your ideas, photographs or stories.

We'd love to hear from you!

100-YEAR FARM FAMILY RECOGNITION



Lacombe County celebrates the contributions of local farm families who have worked in Lacombe County through generations with the 100-Year Farm Family program.

To get your sign, contact Lacombe County (403-782-6601). Participants will have the option of sharing the history of their farm through the County News and social media channels.

Follow us online, and stay up-to-date on Lacombe County news, events and other information!

facebook.com/LacombeCounty

instagram.com/lacombecounty

twitter.com/LacombeCounty

youtube.com/LacombeCounty

www.lacombecounty.com

Phone | 403.782.6601 Email | info@lacombecounty.com Fax | 403.782.3820

COUNTY NEWS

is published by Lacombe County and printed by PostMedia.
If you have feedback or story ideas, please contact:
Nicole Plewis, Communications Coordinator
communications@lacombecounty.com
403.782.6601

Lacombe County Directory

RR3, Lacombe Alberta T4L 2N3 www.lacombecounty.com			
Department Numbers:		Main Office - 403-782-6601	
		Planning Services - 403-782-8389	
		Community Services - 403-782-8959	
		Operations - 403-782-8379	
		Public Works Shop - 403-782-3567	
General			
After Hours Emergency Answering Service		403.357.1210	
Administration Fax		403.782.3820	
Public Works Fax		403.782.5356	
For Service Requests, see our website - or phone the switchboard at 403-782-6601			
Senior Administration			
Tim Timmons, County Manager ttimmons@lacombecounty.com		Call 403-782-6601 to speak with the County Manager or with a Lacombe County Director	
Michael Minchin, Director of Corporate Services mminchin@lacombecounty.com			
Bill Cade, Director of Operations bcade@lacombecounty.com			
Dale Freitag, Director of Planning Services dfreitag@lacombecounty.com			
Dion Burlock, Director of Community Services dburlock@lacombecounty.com			
Council			
		Home	Cell
John Ireland, Div. 1	(jireland@lacombecounty.com)		403.392.3981
Brenda Knight, Div. 2	(bknight@lacombecounty.com)	403.788.2168	403.550.2168
Barb Shepherd, Div. 3	(bshepherd@lacombecounty.com)		403.340.9724
Dwayne West, Div. 4	(dwest@lacombecounty.com)		403.660.2328
Ken Weenink, Div. 5	(kweenink@lacombecounty.com)		403.350.8014
Allan Wilson, Div. 6	(awilson@lacombecounty.com)		403.506.3735
Dana Kreil, Div. 7	(dkreil@lacombecounty.com)	403.746.3607	403.358.9400