



Friday, September 22, 2023 | Volume 9

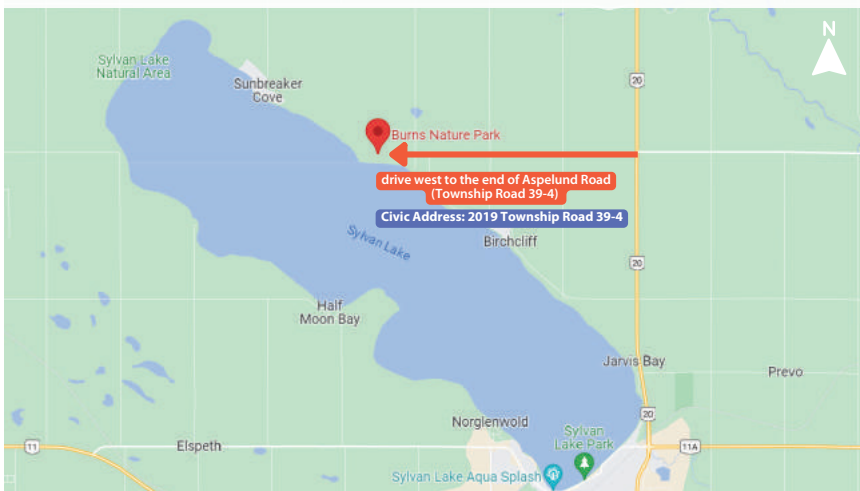
Officially Open: Burns Nature Park

More than 150 people turned out for the Grand Opening celebration of Burns Nature Park on September 8, 2023. The newest park is a 20-acre nature sanctuary located on the east side of Sylvan Lake, at the very west end of Aspelund Road (Township Road 39-4).

Burns Nature Park was graciously donated to Lacombe County by James and Patricia Burns, longtime and active members of our community.

The Burns family realized the immense environmental value of their family property and decided to make it available for public enjoyment while conserving its natural features to benefit future generations. The park is now owned and stewarded by Lacombe County and features hiking trails, a breathtaking view of Sylvan Lake, interpretive signage, and bench areas.

BURNS NATURE PARK - Context Map



A MESSAGE FROM THE BURNS FAMILY:

We acquired 26 acres of land in 1991 and are excited to donate part of this property to Lacombe County to establish Burns Nature Park, which will be preserved for all time. We had decided a number of years ago that we didn't want to see the trees cleared for development purposes and agreed that the ideal use of this area would be as a park. We are delighted to know that the trees and habitat will continue.

This space is for everyone who enjoys a "quiet walk in the woods." Our greatest wish is that this will be a place of peace for all who enter. We have tried to preserve all the natural beauty and to allow Mother Nature to do her thing. During your time in the Burns Nature Park, you can rest on a bench which overlooks the shore of beautiful Sylvan Lake. The bench is dedicated to our son, Jeff, who passed away from cancer a couple of years ago.

The majority of the walking trails initially follow animal trails through the trees and will take you past all kinds of interesting trees and bushes, flora and fauna. Many animals pass through this area, and their space is so limited that it will be great to know this area will be here for them. We have an app on our phones that listens for birds. It has shown up to 21 different types of birds recorded on their property in a couple of hours. Thanks for coming to see what nature has provided us.

Please enjoy our Burns Nature Park!



What's Inside

- 2 [Internet Safety Workshop](#)
- 3 [APPLY TODAY | Subdivision & Development Appeal Board](#)
- 4 [Medicine River Crime Watch AGM](#)
- 4 [Fire Prevention Week 2023 - Cooking Safety Starts with YOU!](#)
- 5 [Upcoming Hamlet of Mirror Events](#)
- 6 [Winter Storage Reminders](#)
- 7 [2023 Paving Project overview](#)
- 8-9 [Agriculture News](#)
- 10 [SURVEY for grain producers](#)
- 11 [WORKSHOP: Agreements in Agriculture](#)
- 12-13 [Subdivision & Development & Map](#)
- 13 [DOW Chemicals Land Use Amendment Open House](#)
- 14 [FAQs - National Day for Truth and Reconciliation](#)
- 16 [Council Highlights](#)
- 17 [Rail Safety Week - Stay Safe!](#)
- 20-23 [Around the County: Events & Info](#)

www.lacombecounty.com



Publication Mail Agreement No 43726064

Return undeliverable items to:
Lacombe County
RR3, Lacombe, AB T4L 2N3

County News is available to read on our website every month. If you wish to stop receiving County News by mail, email communications@lacombecounty.com with your mailing address and we will take you off our mailing list.

**THE DANGERS OF
SOCIAL MEDIA & OTHER
INTERNET TRAPS**

November 2, 2023
Eckville Community Centre
Doors Open: 6:30 P.M.
Presentation: 7:00 P.M.

**KEEP YOUR
CHILDREN
SAFE!!**

SPEAKER: SERGEANT KERRY SHIMA
Internet Child Exploitation (I.C.E.) Unit

OUR SPEAKER

Sgt. Kerry Shima is a member of the Northern Alberta Internet Child Exploitation Unit that investigates incidents of child luring, sextortion, possession, transmission, and the making of child pornography, as well as internet-related voyeurism involving youth.



SGT. KERRY SHIMA
Internet Child Exploitation (I.C.E.) Unit

**ABOUT THE
PRESENTATION**

This presentation will focus on education, prevention, and putting parents, teachers, caregivers and coaches in a position to protect their children from online sexual exploitation.

Sgt. Kerry Shima will discuss:

- The role of I.C.E. in Alberta,
- Current applications , internet platforms, and resources available to parents so they can better support healthy and productive online experiences for their children and teens.

Assorted snacks and refreshments will be served.

Sponsored by The Medicine River Crimewatch Society and other organizations TBA
Co-sponsored by Eckville FCSS

**WE'RE HIRING
WE'RE HIRING
WE'RE HIRING**

RECEPTIONIST

Temporary, Full-Time Position.
Deadline to apply is October 3, 2023 Full details at
www.lacombecounty.com

**LACOMBE
COUNTY**

**Tax Installment
PAYMENT PLAN**



**Sign up TODAY
for the monthly plan.**

Contact Lacombe County at (403) 782-6601 or
visit www.lacombecounty.com for more details.



Automatic
Budget-friendly
Simple
Convenient

IT'S HARVEST SEASON



Stay ALERT | Stay PATIENT | Stay SAFE

**LACOMBE
COUNTY**

**This harvest
season, make
safety a priority.**

Let's all share the
road and drive
with care, so that
everyone will get
home safely.

2023 Municipal Property Assessment Inspections



Property inspections will be ongoing for the remainder of 2023. Lacombe County is aware of new construction and significant renovations due to development and safety codes permitting. However, we would appreciate your as-

sistance with demolitions or removals of homes, garages, sheds, or any other buildings and/or changes to the use of land and existing buildings. An assessor must verify a building has been removed or a change in the property's use has occurred before December 31, or it will be assessed and reflected on your 2024 Assessment and Tax Notice.

If any of these changes have occurred on your property and you are unsure if the County is aware of it, please contact the Lacombe County Assessment Department at 403-782-6601 or email info@lacombecounty.com.

WHY INSPECTIONS ARE ESSENTIAL?

The information we collect about a property must be current so that assessors can prepare an accurate and equitable assessment of your property and other similar properties in the municipality each year. This is especially important if the property has recently changed ownership or if renovations or modernizations have been completed.

When we arrive at a property, we will attempt to make contact at the residence or primary building and are happy to explain why we are there and what we are doing. Each Lacombe County Assessor carries an ID.

We will do our best to answer your questions during the inspection; however, some inquiries require further research and information. If this is the case, we may request contact information so follow-up can be done to answer your questions.

DID YOU KNOW?

In Lacombe County, manufactured homes are assessed to the registered owner of the land on which they are located? In situations where the registered owner of the land is NOT the same as the owner of the manufactured home, Assessors appreciate the assistance of both owners to collect the necessary information to prepare the assessment. The assessment and tax notice are mailed to the registered owner of the land the following year.

FOR YOUR INFORMATION

Lacombe County municipal Assessors will be visiting properties throughout the municipality this year to verify property information to ensure accurate and equitable assessments – we appreciate your cooperation in doing so. Our assessors carry identification and will present it upon request. If you have questions or concerns, don't hesitate to get in touch with us at the Lacombe County Administration Office.

Ferne Gudnason receives 2023 Leadership Award for Sustainability from the Alberta Museums Association

The Alberta Museums Association (AMA) is pleased to announce Ferne Gudnason as the recipient of the AMA's 2023 Leadership Award for Sustainability, in recognition of her commitment to volunteerism, sharing community history, and ensuring the sustainability of the Mirror and District Museum.

A long-time resident of Mirror, Alberta, Ferne first became a volunteer at the Mirror Museum in 2004. In 2017, she joined the board of the museum as Secretary. After the loss of multiple board members, Ferne stepped up to act as Secretary, Treasurer, Volunteer Coordinator, and eventually, President. As a rural community museum with no permanent staff, the loss of volunteers following the pandemic meant that the Mirror Museum was considering closure.

In 2022, Ferne made plans to move to Saskatchewan to be with her family, but she did not want to leave the museum until the board was operating at full capacity. Her promotion of the museum at local events and businesses, her work with the County of Lacombe to ensure the stability of the museum, and her dedication to the sustainability of the organization and its finances demonstrated Ferne's commitment to sharing Alberta's heritage and saving a community museum. Through volunteer engagement and community holiday events, Ferne successfully recruited a full board of volunteers. Ferne has since departed her role, though she still volunteers to

mentor the new board as they assume their positions.

Beyond her work to ensure a thriving board, Ferne has also contributed to the cultural and social sustainability of the museum and her community. Ferne is a member of the Icelandic Genealogy Society and has used her passion to help community members connect to their own family histories through research, and photo and record preservation and digitization projects. In her time as a volunteer Ferne has mentored countless summer students, curated exhibitions, and engaged in local museum networks for peer support.

"Ferne definitely needs to be honoured for her tenacity and dedication to the Mirror Museum Association," said Debbie Gillard, current President of the Mirror and District Museum. "If it hadn't been for her the museum would be defunct."

Nominations for the Leadership Awards are adjudicated by the Leadership Awards Committee, comprised of Individual Members of the AMA. The Award will be presented at an Awards Gala during the AMA's 2023 Fall Gathering, presented in partnership with Heritage Park Historical Village. Ferne Gudnason's achievements will be celebrated at the Gala, which took place on September 22, 2023 in the Gasoline Alley Museum at Heritage Park in Calgary.

APPLY TODAY

Lacombe County invites applications from the public at large for appointment to the following:

SUBDIVISION AND DEVELOPMENT APPEAL BOARD/ ASSESSMENT REVIEW BOARD (JOINT APPOINTMENT)

The Lacombe County Subdivision and Development Appeal Board (SDAB), which is comprised of five members of the public-at-large, is a quasi-judicial board that hears appeals from the decisions of the County's Development Authority and Subdivision Authority.

The Lacombe County Assessment Review Board (ARB) is comprised of the SDAB members and hears and makes decisions on property assessment complaints.

SDAB and ARB members are required to successfully complete board training to maintain their eligibility as qualified board members.

The SDAB/ARB will also hear appeals brought forward under the Weed Control Act as per Section 19 of the Act and Agricultural Pest Act as per Section 14(5) of the Act.

- Applicants should have an interest in 1) municipal planning and development, 2) property assessment, and 3) the administrative tribunal process
- SDAB and ARB meetings are held as required
- Appointments to these Boards are for the period of January 1, 2024 - December 31, 2025
- Chair of the ARB is appointed by County Council

Persons interested in applying for appointment to these Boards are invited to submit an application providing details of their qualifications and experience by October 4, 2023. If you are interested in serving as Board Chair for the ARB please indicate this in your application.

Application forms can be found on the County's website www.lacombecounty.com or at the County Office. For further information, please contact:



TIM TIMMONS, CLGM
COUNTY MANAGER
LACOMBE COUNTY

Remove your anchors from local lakes



In order to keep our lakes safe for users YEAR ROUND, Lacombe County asks anyone who uses pleasure crafts in the summer to **remove anchors and moorings from the water before winter arrives.**

This will ensure the lake remains safe for winter recreational users.

SAFETY FIRST

Medicine River Crime Watch AGM

Tuesday, October 24 | 7 PM | Gilby Community Hall (north of Eckville on Hwy 12)



Date: Tuesday, October 24, 2023
Time: 7:00 p.m.
Location: GILBY COMMUNITY HALL (north of Eckville on Hwy 12)

Details:

- **Michael Kartusch**, Manger of I.T. Services at Lacombe County, will give a presentaton on cybersecurity.
- **Carrie Dennett**, a Professor from the Justice Studies Program at Red Deer Polytechnic will speak about projects that her students are doing regarding Crime Prevention.

All attendees will have their names **entered for DOOR PRIZES!** Coffee will be provided. **Attendees are asked to bring a snack to share for the meeting.**

THANK YOU TO THE GILBY AG SOCIETY FOR DONATING THE USE OF THE GILBY HALL

The best crime prevention is when community members watch out for each other!
 If you want to become a Medicine River Crime Watch member or want to update your membership, email: medicinerivercws@gmail.com.

Burning reminders from Lacombe County

Under Lacombe County's Fire Protection policy you require a fire permit between March 1st and October 31st. If you are found burning without a permit you will be required to pay for the fire department response fee.

A fire permit is required for all outdoor fires, excluding fires used for cooking or warming purposes or burning barrels. While the use of burning barrels does not require a permit they must be covered with a metal mesh screen and the mesh holes must be no larger than half an inch in size.

It is important to be aware that although you may have a permit there are only certain materials that you are allowed to burn. The list of permissible and non-permissible materials are below.

Permissible materials for burning include:

- Clean untreated wood
- Straw/hay/broken bales
- Stubble
- Grass/weeds
- Leaves/Tree pruning (yard clean up)

Items that you are not permitted to burn include:

- Treated wood
- Used construction materials or any materials from construction sites
- Animal manure
- Pathological Waste (human waste)

- Tires
- Used oil
- Rubber or plastic (anything coated with rubber or plastic) including bailer twine
- Containers that held pesticides or other chemicals
- Any waste that causes dense smoke, offensive odours or releases toxic substances

Additional conditions exist such as wind speed, signage, supervision, and overall health and safety factors. For this and more information on fire permits, permissible and non-permissible burning or to obtain a fire permit please visit www.lacombecounty.com or contact the County at 403-782-8959.

Cooking safety starts with YOU!

The National Fire Protection Association® (NFPA®) — the official sponsor of Fire Prevention Week™ for more than 100 years —has announced **"Cooking safety starts with YOU! Pay attention to fire prevention TM"** as the theme for Fire Prevention Week, October 8-14, 2023. This year's focus on cooking safety works to educate the public about simple but important steps they can take to help reduce the risk of fire when cooking at home, keeping themselves and those around them safe.

According to NFPA, cooking is the leading cause of home fires, with nearly half (49 percent) of all home fires involving cooking equipment; cooking is also the leading cause of home fire injuries. Unattended cooking is the leading cause of home cooking fires and related deaths. In addition, NFPA data shows that cooking is the only major cause of fire that resulted in more fires and fire deaths in 2014-2018 than in 1980-1984.

Following are cooking safety messages:

- Always keep a close eye on what you're cooking. For foods with longer cook times, such as those that are simmering or baking, set a timer to help monitor them carefully.
- Clear the cooking area of combustibile items and keep anything that can burn, such as dish towels, oven mitts, food packaging, and paper towels.
- Turn pot handles toward the back of the stove. Keep a lid nearby when cooking. If a small grease fire starts, slide the lid over the pan and turn off the burner.
- Create a "kid and pet free zone" of at least three feet (one meter) around the cooking area and anywhere else hot food or drink is prepared or carried.
- Staying in the kitchen, using a timer, and avoiding distractions that remove your focus from what's on the stove

Fire Prevention Week is celebrated throughout North American every October, and is the oldest public health observance on record in the U.S. Entering it's 101st year, Fire Prevention Week works to educate people about the leading risks to home fires and ways they can better protect themselves and their loved ones.

Learn more at <https://www.nfpa.org/Events/Events/Fire-Prevention-Week>.

Cooking safety starts with YOU.

Pay attention to fire prevention.™



FIRE PREVENTION WEEK™

fpw.org

©2023 National Fire Protection Association | Sparky® is a trademark of NFPA | BAN23



MIRROR CORNER

MIRROR LIBRARY



Preschool Time
Thursdays at 11 am



MARK THESE DATES

Mirror Rec Society (Community Hall)

October 14, 2023 | FALL DINNER. Dinner will start at 5:00 p.m., and doors open at 4:30 p.m. Please come down early for coffee and tea and take the time to visit with friends and neighbours. The cost for the dinner will be \$12.50.

October 28, 2023 | KIDS HALLOWEEN PARTY.** We are hosting a kids afternoon Halloween party with hotdogs, chips, treats and something to drink. There will be draws for gift cards and treat bags to take home. Starting time will be 1:00 p.m. and depending on how long folks stay, it will go to 3-4 p.m. ****Kids 12 and under MUST be accompanied by an adult.**

We hope to see the community and surrounding neighbours there.

AGM MEETING | Mirror Association for Ball Diamonds, Campground & Skating Rink

Join us for the **Annual General Meeting of the Mirror Association for Ball Diamonds, Campground, and Skating**, in partnership with Lacombe County, we work together to provide a safe and inclusive environment for the community to enjoy outdoor recreational activities year-round.

We maintain the outdoor hockey rink, skate park, ball diamonds and campground all designed to enhance the quality of life in our community.

AGM Agenda:

- Elect Officers/Directors: President, Vice President, Secretary, Treasurer, and Directors.
- Financial report review.
- Future plans and project discussions.

WHO SHOULD ATTEND?

Whether you're interested in joining the board, offering input on events, or simply learning more about our offerings, we welcome your participation and enthusiasm.

October 5, 2023 | 7:00 pm
Skating Rink Building
(5015 51 Street)

We look forward to seeing you at the AGM and hearing your valuable input. For further information or if you have any questions feel free to contact us.

Ron Smithman, Vice President
403-323-4622



HAMLET OF MIRROR DEVELOPMENT INCENTIVE GRANT

Are you located in the Hamlet of Mirror, on lands zoned Hamlet Commercial 'C-H' District or Hamlet Industrial 'I-H' District?

Are you starting a business on an unimproved parcel of land or in a vacant building?



Are you expanding an existing business?

Do you have Development Permit approval for the proposed business?

**YOU MAY BE ELIGIBLE
FOR A DEVELOPMENT
INCENTIVE GRANT!**



Schedule a meeting with one of our Planners to determine if you are eligible!



Planning Services
403-782-8389



2023 Mirror Dog Tags

A license is required for all dogs in Mirror. After February 28, 2023, the cost increases to \$30 for an altered dog and \$50 for an unaltered dog. For more information, please call (403) 782-6601 or visit www.lacombecounty.com/en/living-here/animal-control.aspx.

Lacombe County will issue a tag for each dog, which must be attached to a collar worn by the dog at all times. Lacombe County Enforcement Officers will do checks to ensure compliance.

If you would like to report a contravention of the Dog Control Bylaw, please call 403-506-9380, or email info@klassickennels.com. **For animal welfare issue please contact the Alberta SPCA at <http://www.albertaspca.org/>***

Jolly Seniors

Pancake breakfast every second Sunday from 9 a.m.-1 p.m.

Booking Mirror Community Hall

Call Lisa 403-788-3890 or cell 403-505-3894.

Friends of the Mirror Library Society/ Mirror Library

The Mirror Library would like to remind patrons of the many items available for borrowing. We carry books for everyone,

audiobooks, DVDs, games, and puzzles.

Hours: Wednesdays 2-5 p.m.
Thursdays 10 a.m. - 1 p.m.
2nd & 4th Saturdays
10 a.m. - 2 p.m.

Please like us at: [facebook.com/booksinmirror](https://www.facebook.com/booksinmirror) for the most up to date information. The Library also has meeting spaces for rent and free Wi-Fi. Please contact us through the Facebook page or email booksinmirror@gmail.com.

Mirror Royal Canadian Legion Branch 189 - 5015 50th Avenue

Meat Draws Saturday at 4 p.m.
General meetings second Sunday at 1 p.m. (unless otherwise

posted).

Mirror and District Museum

Contact mmuseum@cciwireless.ca if you would like to volunteer and for hours of operation

CN Rail crossing delays

If you experience delays longer than 20 minutes at the Mirror rail yard crossing, call CN Rail at 1-800-465-9239. Follow the prompts and be ready to provide details shown on the crossing signal mast to CN personnel. Transport Canada may be reached at 1-888-463-0521.

ENVIRONMENT

From Marginal to Meaningful: How you can get paid for low-yielding cropland



By Jenna Dell, ALUS Field Assistant

Are you struggling with cropland that is hard to farm or areas that yield little profit? ALUS could be a solution for you to boost profit and sustainability in these low-yielding areas by growing ecosystem services. There are currently four main types of crop management changes that would qualify for ALUS.

1. **Protecting Wetland and Streams:** Instead of farming through non-permanent or temporary wetlands or streams, you can work around them. If approved, you could get \$75 per acre per year for the acres you have chosen to farm around.

2. **Creating Buffer Zones:** Around permanent or semi-permanent bodies of water, a wider, unfarmed buffer zone can be left between the waterbody and the crop. If approved, you could get \$75 per acre per year for the buffer zone that you've chosen to farm around. Plus, you could get \$10 per acre per year on the water area itself.

3. **Converting Marginal Crop to Forage:** Crop land that is adjacent to a waterbody can be converted to forage that will be hayed (or silaged) after the middle of July. If approved, you could get \$75 per acre per year for those marginal annual crop areas you've chosen to convert to hay / silage.

4. **Establishing Permanent Pasture:** Lastly, crop land near a water body can be converted into permanent pasture and be grazed using sustainable grazing principles. If approved, you could get \$30 per acre for those marginal annual crop areas you've chosen to convert to pasture.

Beyond the annual payments, you could also qualify for **up to 85% reimbursement** of invoiced expenses

associated with implementing these projects. This cost could include items like forage seed and seeding costs, fencing and watering costs, or costs of planting native willows and trees in the buffer zones, etc.

The ALUS program is committed to ensuring that not only are ecosystem services being produced, but that farm goals are met as well. This means that projects are developed in collaboration with you to make sure your farm's unique needs are kept in mind. This includes allowing flexibility to use some of the areas during certain conditions, like drought periods or after the bird nesting season; as well as having shorter-term, 5-year contracts, with the ability to opt out of the program should circumstances on your farm change.

As harvest season approaches, keep an eye out for potential sites that could benefit from ALUS initiatives on both owned and rented land. Once you have identified suitable sites, you can contact myself at 403-392-4616 or Ken Lewis, ALUS Coordinator, at 403-505-9038. We can help start the process or answer any questions you may have.

NOTICE: RESERVE LAND INSPECTIONS

September & October

Lacombe County staff will be conducting inspections of reserve lands throughout the County in the months of September and October.

Inspections are completed to ensure the use and management of County reserves remains consistent with [Policy RC\(8\): Use and Management of County Reserve Lands](#).

REMINDER: Winter Storage permits required on reserve lands

The storage of select, seasonal items, may be authorized on County reserve lands from September long weekend (Sept. 2/23) to May long weekend (May 18/24). Winter storage may proceed in locations where the integrity of the environment is not compromised.

Items approved for storage must have a unique identifier affixed or the item(s) may be removed. The storage of ice fishing huts and storage sheds will not be permitted. Stored items without County registration may be removed and disposed of at the County's sole discretion.

Applications must be submitted on an annual basis for the storage of items through the following application:
<https://www.lacombecounty.com/en/living-here/special-use-of-reserves.aspx>.



Calls or questions may be directed to jnakonechny@lacombecounty.com or 403-782-8959



Follow us online TODAY for current Lacombe County information



LacombeCounty



@LacombeCounty



www.lacombecounty.com

OPERATIONS

CONSTRUCTION UPDATE | 2023 Paving Projects

Lacombe County Paving projects for 2023 include:

- Rainy Creek Road from Hwy 20 to the West County Boundary for 28.53 km and
- Rock Pine from D&M Road (RR 27-5) to Spruceville Road (RR 27-4) for 1.6 km.

The contract was awarded to Central City Asphalt in February 2023. The contractor mobilized in May 2023, and the work was completed in the first week of June 2023.

The scope of work included asphalt concrete pavement, line painting, pavement message marking, paving of the approaches, and gravel surfacing for entrances.



Rainy Creek Road - 2023 Paving



Rainy Creek Road - 2023 Paving



Rock Pine Road - 2023 Paving



DO YOU HAVE GRAVEL?

To ensure we have a reliable supply of gravel to maintain our County roads, Lacombe County is always on the lookout for new gravel sources. Gravel is an important, non-renewable resource necessary for construction and maintenance of roads.

WHAT SHOULD I DO IF I THINK I HAVE GRAVEL ON MY LAND?

If you think you have gravel on your property, and you wish to investigate further, please contact the County office at 403-782-8379 and speak with the Operations Department. County staff will come out to meet with you and arrange for testing. While the testing involves digging a test hole or holes, it is done in the least invasive way practical.

There is no obligation on the part of the Land Owner if suitable gravel is found. The County will discuss options and work with the land owner on a possible agreement for access and use of the land.

IS THE GROUND
ROCKY?

ARE THERE GRAVEL PITS
NEARBY?

DO YOU HAVE LOW LYING
PROPERTY?

DO YOU HAVE A CREEK/RIVER BED ON
YOUR PROPERTY?

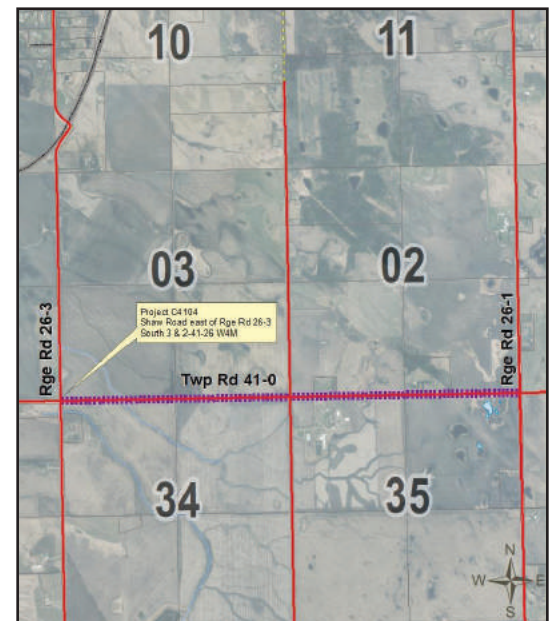
HAVE YOU FOUND ROCKS DURING
EXCAVATION WORK?

CONSTRUCTION NOTIFICATION | Township Rd 41-0

Lacombe County has issued a Notification of Municipal Works for road construction on **Township Road 41-0** from Rge Rd 26-3 east 2 miles to Rge Rd 26-1.

Roadwork started Monday, September 18, 2023 and take 5-weeks to complete (weather permitting).

Please drive with caution around construction crews, and obey all signs.



CONSTRUCTION SEASON REMINDER

Please drive carefully and obey ALL signs and speed limits during construction. If you have questions or concerns regarding any project, please contact the Operations department at 403-782-8379.

All notifications and maps can be found at lacombecounty.com.

AGRICULTURE

Clubroot of Canola

What is it?

Clubroot is a serious soil-borne disease of canola, mustard, and other crops of the cabbage family.

Why is it of concern?

This disease is capable of significantly reducing yield, quality, and may destroy a crop if infestation is high enough.

How can it be spread?

Infested soil can be carried field to field by farm machinery especially tillage equipment, as well as wind and water erosion.

How long can it persist in the soil?

Resting spores are extremely long lived and may survive in soil for up to 20 years.

Best Management Practices

- Use Clubroot resistant varieties when growing canola in areas only where the disease is established.
- Use long rotation breaks (Three years or more) between canola crops.
- Practice good sanitation of equipment and machinery to restrict the movement of potentially contaminated soil.
- Use direct seeding and other soil conservation practices to reduce soil erosion.
- Minimize vehicle and equipment traffic to and from fields.
- Scout canola fields regularly and carefully. Identify causes of wilting, stunting, yellowing, and premature ripening.



INSPECTION NOTICE

Lacombe County Clubroot of Canola Inspections

Lacombe County Agricultural Service Board will be conducting random Clubroot of Canola Inspections as per County Policy AG(11) Clubroot of Canola.

With the increased spread of Clubroot of Canola within Central Alberta, canola growers must remain vigilant to limit the spread and minimize the economic impacts of Clubroot of Canola.

Symptoms include patches of premature ripening plants, shrivelled unfilled seed pods, and galls present on the plant's root system.

Swathing operations provide an excellent opportunity to scout for the presence of Clubroot of Canola, as well as sclerotinia, and blackleg. If you spot patches of prematurely ripened Canola in your field, take a minute to pull some standing plants or stubble and inspect the root system.

If you have any questions or concerns contact:

Mike Bates, Manager of Agriculture & Environmental Services, mbates@lacombecounty.com / 403.782.8959

Central AB Foodgrains Growing project update

The Central Alberta Growing Project will be harvesting its 85 acres of canola by Bentley very soon, likely in early October.

This is the 28th consecutive year for the Project, with all funds raised used to help hungry people in different parts of the world.

The local group works in conjunction with the Canadian Foodgrains Bank, a registered Canadian charity based in Winnipeg that was established in 1983. Funds are raised in Canada to assist the hungry in countries such as Guatemala, South Sudan, Pakistan and Cambodia.

Local farmers provide all the work required to grow a crop and agri-businesses assist by donating some of the inputs.

"It is a rural based project, but people in urban environments can help by donating funds to assist with items such as land rent, crop insurance and inputs not donated," says Committee member Doug Maas. "They will receive a charitable tax receipt for the cash donation," adds Maas.

There are over 30 growing projects in Alberta and over 200 in Canada. They act as a major fundraising partner for the Canadian Foodgrains Bank.

The Central Alberta group has utilized land in all different parts of Lacombe County since starting in 1996. "Every year we are able to obtain land to grow a crop, but it is getting more difficult each year," says Maas. "For instance, we are actively looking for



land now for the 2024 crop year."

Farmers can donate some of their own crop at local elevators and designate it for the Central Alberta Growing Project. This has become more prevalent in the last 3 years.

If you wish to make a donation or get more details on this year's upcoming harvest, please contact Doug Maas at 403-318-5733.



The importance of fall weed control

There is still time left to control those problem weeds you've been struggling with all summer. Fall presents an excellent time of year to make progress on removing stubborn perennial weeds – especially Canada thistle or pesky dandelions.

With the cooler fall season temperatures coming in, grass finally has a chance to recover from the heat stress of summer. You can encourage good grass competition during this time, which in turn will help choke out any lingering weeds. Fertilizing, aerating, top dressing, reseeding, and proper mowing height can help a lawn setting. With pastures, rotational grazing, proper stocking rates, seeding/overseeding, and nutrient adjustments contribute to a good healthy grass stand. Essentially, any activity that can help encourage your grass to build up a healthy root reserve of nutrients to last it through the winter and

to be well prepared for spring weather.

Another thing to keep in mind as you might be deadheading, pruning or removing built up dead or dying material, is the proper disposal of yard waste. Whether it be weed flowers or seed heads, diseased branches and leaves, or just general plant material, be mindful of how and where you might be transporting these undesirables, as they can cause issues if they aren't dealt with properly.

Lastly, a fall herbicide application can be an extremely effective technique for resolving perennial weed concerns before they become a problem next growing season. Make sure to use a registered, selective herbicide for best results.

If you have any questions, please call the Lacombe County Agriculture department at 403.782.8959.



ATTENTION

Grain Bag and Twine Recyclers in Lacombe County

Are you recycling your agricultural plastics and twine helping to promote agriculture sustainability?

IT ONLY WORKS IF YOU RECYCLE RIGHT!!

Please ensure you are only recycling clean baler twine and/or grain bag plastic, to ensure all product is accepted for recycle. See the following instructions below.



NO feed bags ~ NO grain totes ~ NO silage plastic ~ NO bale wrap

cleanfarms

Let's make it to 100% in 2023

Recycle every bag and container!



Pesticide and fertilizer containers up to 23L



Pesticide and fertilizer totes & drums



Seed, pesticide & inoculant bags & large tote bags

Cleanfarms.ca



Recycle Used Baler Twine

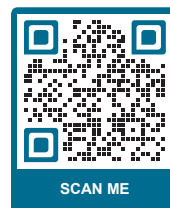
Preparing twine for recycling

Pick up, free, twine collection bags from pilot collection sites and select County/MD offices.

1. Shake to remove debris, snow or ice.
2. Place loose twine in a collection bag.
Plastic twine only. Bags of twine mixed with netting, sisal twine, or other materials will be rejected.
3. Return to an **Alberta Ag Plastic. Recycle It!** pilot collection site. Call ahead for unloading assistance.

Find recycling details and a collection site near you:

- For more about **Alberta Ag Plastic. Recycle It!** – go to **AlbertaAgPlastics.ca** or scan the QR code.
- To see what other ag materials Cleanfarms recycles, go to **Cleanfarms.ca**



Cleanfarms.ca
info@cleanfarms.ca @cleanfarms

cleanfarms

ALBERTA AG-PLASTIC RECYCLE IT!

Alberta

The pilot project is led by the multi-stakeholder Agricultural Plastics Recycling Group; funds were granted by the Government of Alberta and are administered by Alberta Beef Producers.

City of Lacombe, Lacombe County sign new Fire Services Agreement

The City of Lacombe and Lacombe County have signed a new Fire Services Agreement after an extensive collaborative effort starting in 2020.

The new agreement began with the Intermunicipal Collaboration Framework (ICF) process, culminating in the review of all previous Fire Service Agreements. These discussions resulted in a transition to a fee-for-service model included in the new agreement.

"The City and our friends at Lacombe County have a long history of finding mutually beneficial solutions through collaborative means," Mayor Grant Creasey said. "This agreement will help ensure the longevity of our respective fire departments while also ensuring fire services are delivered efficiently, effectively and economically."

"This agreement is the culmination of nearly three years of work towards finding a suitable and equitable way to fund fire services in the Lacombe District," said Reeve Barb Shepherd. "The safety and well-being of our communities has guided us throughout this process, and the joint efforts from both municipalities have yielded a framework that will serve as a model for intermunicipal cooperation."

Overall, the Agreement establishes the terms under which the City will provide contract fire services in a County response area, and includes resource allocation, costs, insurance, dispute resolution, and termination conditions.

On July 25th, 2023, the ICF Committee convened to assess the drafted Agreement, aiming to establish a Fire Services delivery framework for the City to the

County. The Agreement, which includes definitions, roles, fees, conflict resolution, and termination provisions, received final approval from both Lacombe County and City of Lacombe councils.

"The Lacombe Fire Department has always provided high-quality services to both the City of Lacombe and Lacombe County, and this agreement will see them continuing to do so well into the future," said Drayton Bussiere, Lacombe County Fire Chief.

"Knowing that help is on the way is what our residents expect from their fire departments," Lacombe Fire Department Fire Chief Jason Fleming said. "This agreement solidifies our long-standing positive relationship with Lacombe County and strengthens our ability to respond during emergency situations."

Calling Grain Producers in the Canadian Prairies!

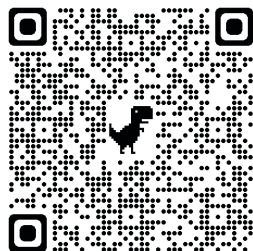
Are you a grain producer in the Canadian Prairies? If so, you are invited to participate in a research survey that will be collecting data on the adoption of winter wheat and ultra-early seeding of spring wheat in the Canadian Prairies. This survey will take approximately 15 to 30 minutes.

To participate in this study you must be

- 18 years old or older
- A grain producer in the Canadian Prairies

If you meet the above criteria and are interested in completing the survey, please go the link below or use your phone camera on the QR code.

Survey Link: <https://forms.gle/LkNoQwSBMjehAWez8>



The Adoption of Winter Wheat and Ultra-Early Seeding of Spring Wheat in Canadian Prairies

Pro00130833

Principal Investigator: Jacey Toerper

If you have any questions please only contact Dr. Linda Gorim at gorim@ualberta.ca or Jacey Toerper at toerper@ualberta.ca to protect your confidentiality.



ATTENTION: Notification of Access for County Assessors

Lacombe County municipal Assessors will be visiting properties throughout the municipality this year to verify property information to ensure accurate and equitable assessments – we appreciate your cooperation in doing so.

Our assessors carry identification and will present it upon request. If you have questions or concerns, don't hesitate to get in touch with us at the Lacombe County Administration Office.



Western Canada
Onsite Wastewater
Management Association



Alberta
Onsite Wastewater
Management Association

PRESENT

SEPTIC

AWARENESS WEEK

SEPTEMBER 18 - 22 • 2023

Did You Know

your septic system needs ongoing maintenance
just like your vehicle does?

Improve Your Septic Sense

Join us for a free presentation on proper
operation & maintenance of onsite
wastewater systems.



info@wcowma.com
877 • 489 • 7471

info@aowma.com
877 • 489 • 7471

wcowma.com/septic-awareness-week-2023

WINTER IS COMING! | Winterizing Your Septic Systems

Did you know that a holding tank or “pumpout” septic system left unused for more than 72 hours may not have the anaerobic bioactivity to generate enough heat preventing winter freezing? If you plan on using this style of septic system during the winter months, here are some long-term steps needed to protect your system from freezing:

1. All components <2.7 meter (9 feet) deep must be insulated with spray or rigid foam to prevent freezing. This foam adds a thermal barrier between frozen ground and non-frozen ground (frost line). A rough “rule of thumb” is 1 inch of insulation equals 1 foot of ground cover. You always want a minimum of
2. Don’t forget to insulate the plastic lid of your holding tank. An un-insulated lid can allow heat from bioactivity to escape even if the sides and top of the holding tank is insulated. For concrete lids and tops, spray foam applied by a professional can be very effective in preventing heat loss.
3. Make sure to use electric heat trace around the any piping, check valve or shutoff valve <2.7 meter (9 foot) depth if your system is connected to a communal wastewater system. As these systems DO NOT

have a drain hole to empty the pipe between pumping cycles like rural system have. Many are <1 meter (3+ feet) from the top of the holding tank lid which is in the frost zone.

WINTERIZING FOR EXTENDED HOLIDAYS OR WINTER MONTH ABSENCES

1. Clean your holding tank with a garden hose and spray nozzle. Pump down your tank by holding the float in the upright position with a long hook on pole. When you see the bottom of the pump, lay the float back down. This process can be done by a professional when they’re performing your annual inspection of the pump, valve and check valve.
2. Add clean water back into holding tank and ensure pump is submerged in water.
3. Add potable RV antifreeze only to the water in the tank, follow manufacturers recommendations for volume and strength.
4. Manually run the pump by holding the float in the upright position for a few seconds to circulate RV antifreeze into discharge piping, check valve and
5. Leave your holding tank pump active when your away DO NOT unplug! High efficiency furnaces, dehumidifiers, RO/water softener backwashes, tap/toilet leaks, or even a family member visiting forgetting to let you know can quickly fill or overflow a holding tank with an unplugged pump when you’re not there.
6. Always leave your alarm system active 24/7 to notify if there’s a problem! Some alarm systems have a call out and text feature so you can be immediately notified if there’s a problem! Contact your local installer or phone provider to take advantage of this timely benefit.
7. Have your daily residence monitor always check for system alarms and water movement in systems not blown out for the winter.
8. **If you’ve closed any valves in or after the holding tank, never run a pump with valves closed on the intake or discharge side of your system, this may damage the pump and piping!**



AGREEMENTS IN AGRICULTURE

How to write them and what you need to know!

DATE: NOVEMBER 16, 2023

TIME: 6:30PM - 9:00PM

LOCATION: PENHOLD MULTIPLEX

(WASKASOO AVENUE, PENHOLD)

Gone are the days of hand shake agreements! Chad Evans with Evans law will be introducing producers to the basic requirements of what is required in any agreement. These agreements include:

- land rental agreements
- surface lease agreements
- mineral rights lease agreements
- purchase and sale of land agreements



SCAN TO REGISTER

Cost is \$20+GST/participant. Register via Eventbrite (scan QR code or visit https://agreements_in_agriculture.eventbrite.ca) or call Jalene at 403-782-8959.



Rail Safety Tips

Talk to your family about crossing railway tracks safely. Follow these tips to keep your family safe!

STOP AT ALL RAILWAY CROSSINGS

When approaching a railway crossing, slow down and be prepared to stop.

LOOK BOTH WAYS FOR TRAINS

At passive crossings, there are no lights or bells to warn you of approaching trains. be extra careful.

LISTEN CAREFULLY FOR TRAINS

If you’re in a loud machine, open your window or door to better hear approaching trains.



SUBDIVISION & DEVELOPMENT ACTIVITY

August 1, 2023 to August 31, 2023

Development Applications Received

No.	File No.	Applicant	Legal Description	Proposed Development	Decision <i>(otherwise pending)</i>
1	121/23	2013949 AB Ltd Valley Mountain Homes	SE 17-39-2-W5M	Dwelling w/Attached Garage and Covered Deck <i>(Replacement, 2nd Residence)</i>	Approved
2	122/23	Malex Custom Homes Ltd.	Lot 49 Block 5 Plan 152 4826 (The Slopes, Sylvan Lake)	Dwelling w/Attached Garage and Covered Porch & Deck	Approved
3	123/23	Ed Kos	Lot D Plan 4508NY (Gull Lake)	Replacing 2 existing cabins with new dwelling/cabin	
4	124/23	Todd & Jessica Green	Lot 1 Plan 5015TR (Fairbrother/Milton Area)	Home Based Business, Minor <i>(Electrical Business)</i>	Approved
5	125/23	Bellco Ltd.	Plan 992 6587 NW 11-40-28-W4M	Dwelling w/Attached Garage and Covered Deck <i>(Replacement, 2nd Residence)</i>	Approved
6	126/23	Dean & Kristine Konrad	Lot 3 Block 1 Plan132 2406 (SW 6-39-02-W5M)	Attached Garage <i>(Existing Structure)</i>	Approved
7	127/23	Janet Hall	SE SW 25-39-26-W4M	Dwelling <i>(Replacement, Mobile Home)</i>	Approved
8	128/23	DBA Dynamic Modular Homes	Unit 63 Condo Plan 142 2139 (Sandy Point RV Resort)	Modular Home, Shed and Gazebo	Approved
9	129/23	Barry Hindley	Lot 1 Block 1 Plan 932 0232 Pt. NE 36-40-28-W4M	192 ft ² Addition	Approved
10	130/23	Harvey Custer & Margo Reid	Block Y Plan 3398BA (SW 27-40-22-W4M)	Dwelling <i>(Mobile Home)</i>	Approved
11	131/23	Rose Gawlak	SE 12-41-4-W5M	Home Based Business, Minor <i>(Health & Detox Business)</i>	Approved
12	132/23	Rashelle & Christine Dubrule	Lot 1 Block 1 Plan 912 2606 (NW 11-39-26-W4M)	800 ft ² Addition	Approved
13	133/23	Delta Land Co. Inc.	Lot 1 Block 2 Plan 142 2128 (Sandy Point RV Resort)	Temporary Clubhouse for Golf Course (3years), clubhouse, pool, retail	
14	134/23	Alberta Conference of Seventh-Day Adventist Church	Lots 27&28 Block 26 Plan 7159AI (Hamlet of Mirror)	Accessory Building	Approved

Subdivision Applications Received

No.	File No.	Applicant	Legal Description	Proposed Subdivision	Decision <i>(otherwise pending)</i>
15	S-018-23	Kevin & Rachel Buchholz Don Tetz	Lot 1 Block 1 Plan 102 6826 SE 25-39-25-W4M	Boundary Adjustment	

Do you have questions about subdivision or development activity?

Contact Us:

Lacombe County
Planning Services
(403) 782-8389
planning@lacombecounty.com

Dale Freitag
Director of
Planning Services

Cajun Paradis
Senior Planner

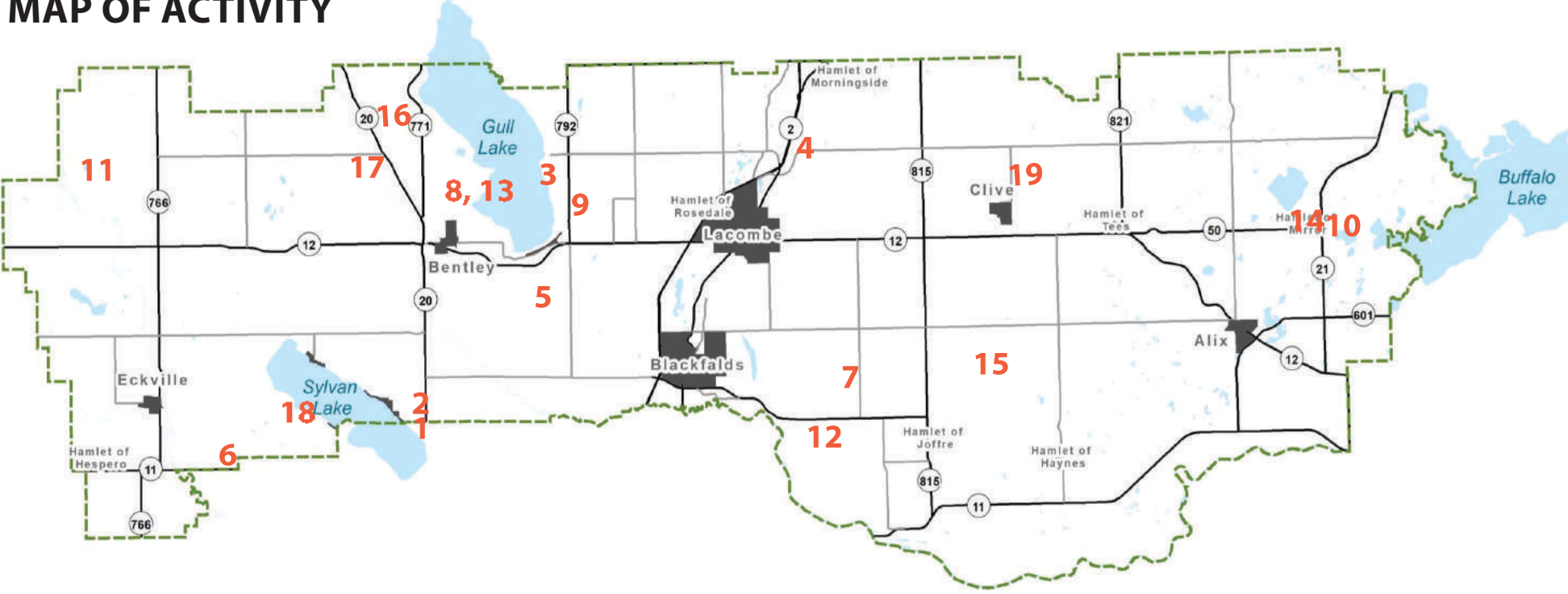
Natasha Wright
Planner / Development
Officer

Nicklas Baran
Planner / Development
Officer

Allison Noonan
Planning Services
Administrative Assistant

Daniella Gonzalez
Planning Services
Receptionist

MAP OF ACTIVITY



Subdivision Applications Received

No.	File No.	Applicant	Legal Description	Proposed Subdivision	Decision (otherwise pending)
16	S-019-23	Teryl McDonagh & Scott Raymond	NW 20-41-01-W5M	1st Parcel Out	Approved
17	S-020-23	Trent Baumbach	Pt. NE 7-41-01-W5M	Fragmented Parcel	
18	S-021-23	Bemoco Land Surveying Ltd.	Kuusamo Krest (Sylvan Lake)	Boundary Adjustment	
19	S-023-23	Martin & Gaylene Van de Pol	SW 8-41-24-W4M	Boundary Adjustment	



You're Invited! Land Use Amendment Application Open House



Dow Chemical Canada ULC operates and owns land at a Petrochemical facility. The land is on Range Road 260, located east of Blackfalds, to the south of Township Road 400. A land use amendment application was submitted to Lacombe County for 9.03 acres (3.65 hectares) of agricultural land immediately north of the site for the purpose of expanding rail activities.

An open house is being held at the Burbank Hall to share information about the land use amendment. The event will have a presentation and provide an opportunity for people to share feedback.



CHECK IT OUT!!

Have you been to the accessible dock located at the Len Thompson Pond in the City of Lacombe?

The construction company for the new dock, IMC Construction, recently surprised the Lacombe Fish and Game Association with a plaque installed in the dock, which highlights the partners who helped make this dock a reality.

There's still time to head over there (before the snow flies)! The dock - and plaque - show what can be accomplished when all levels of government (Government of Alberta, Lacombe County and City of Lacombe) join forces with non-profits and local businesses.



Wednesday, October 18th, 2023
6:00PM to 8:00PM (MST) (Presentation to begin at 6:30PM)
Burbank Hall (313 Burbank Road, Blackfalds, Alberta)

To speak to a project representative,
please contact Darby Henshaw at
dhenshaw@bastudios.ca

Planning Services

Frequently Asked Questions



YOU HAVE QUESTIONS

National Day for Truth & Reconciliation

WE HAVE ANSWERS



Each year, September 30 marks the National Day for Truth and Reconciliation in Canada. The purpose of this Q&A article is to provide information to our community on this day and its importance.

WHAT IS THE NATIONAL DAY FOR TRUTH AND RECONCILIATION?

The National Day for Truth and Reconciliation is a day for all Canadians to reflect on the importance of reconciliation with Canada's Indigenous communities. It is based on the idea that reconciliation can be achieved by sharing the truth about Indigenous communities' historical and present-day experiences. These stories are not commonly known in the mainstream, and having an opportunity to share these stories allows for dialogue and understanding between Indigenous and non-Indigenous communities, which is necessary for reconciliation to occur.

Specifically, this day honours the young children who were victims of the Indian Residential School system – including those who did not return home and the survivors who left with trauma. Observing this day increases public awareness of the negative impacts and intergenerational trauma that was caused by historic policies, realizing that these historical events continue to affect Indigenous communities today, and finding ways by which meaningful reconciliation can be achieved with Indigenous communities.

WHO ARE THE INDIGENOUS PEOPLES OF CANADA?

The term "Indigenous" in Canada is used as an overarching term to describe three groups of communities (1) the First Nations, (2) the Métis, and (3) the Inuit. While these three groups are culturally unique and distinct, they are descendants of peoples who have resided in North America for thousands of years.

WHAT IS THE RELATIONSHIP OF INDIGENOUS PEOPLES TO LACOMBE COUNTY?

Lacombe County is situated on Treaty 6 Territory, which is the traditional and ancestral homeland of many First Nations communities such as the Cree, Dene, Blackfoot, Saulteaux and Nakota Sioux, and is also the traditional homeland of the Métis in Métis Nation Region 3. The prairies, forests, rivers, lakes, hills, and valleys of present-day Lacombe County have been used by these communities for gathering, travel, hunting, fishing, and ceremony for millennia.

With the signing of Treaty 6 in 1876, First Nations communities were located to defined reserve areas, none of which are located within present-day Lacombe County. However, the communities continue to have special reverence and respect for these lands and waters as their ancestral homeland.

WHAT IS LACOMBE COUNTY DOING TO COMMEMORATE THE NATIONAL DAY FOR TRUTH AND RECONCILIATION?

Since 2022, Lacombe County Council and staff have hosted an Indigenous speaker each year to learn about Indigenous history and the lived experiences of the communities. Staff have also been taking courses, reading books, and attending seminars led by Indigenous peoples to better understand how reconciliation can be applied to our daily work.

WHAT CAN I DO TO COMMEMORATE THE NATIONAL DAY FOR TRUTH AND RECONCILIATION?

There are various things you can do to mark this day.

- Wear orange to show support and solidarity for the victims of the Indian Residential School system
- Attend one of the many events, webinars, and educational sessions on Truth and Reconciliation being hosted by various organizations this month
- Read a book on Indigenous history and experiences in Canada
- Watch/listen to podcasts, documentaries, and videos from recognized sources on Indigenous history and experiences in Canada.

National Day for Truth and Reconciliation



Government of Canada
Gouvernement du Canada

Canada

ECONOMIC DEVELOPMENT

LACOMBE COUNTY **SPOT** *light*

In a world of increasing food uncertainty, Lacombe County growers are leading the charge in adopting innovative practices to produce food for Western Canada. Employing over 100 talented individuals, Doef's Greenhouses is a remarkable example of a successful, cutting-edge, local horticultural operation in Lacombe County. The company is well-known across the province for its Alberta-grown peppers, cucumbers, eggplants, and leafy greens.

Doef's Greenhouses is located east of Gull Lake in Lacombe County. The family business was originally started by Joe and Helen Doef in 1969 as a small greenhouse operation. Today, the company is primarily owned by Eric Doef, Paul Doef, and Phil Visscher, second generation owners and operators.

The company has continued to expand, leveraging new opportunities in the market as they arise. Since 2020, Doef's Greenhouses has tripled in size, with currently 37 acres of land being used as a greenhouse, with the potential to grow into another 26 acres at its new west location.

Doef's Greenhouses is the largest bell pepper and eggplant producer in the prairie provinces. Each year, the company produces approximately 18 million bell peppers, 4 million long English cucumbers, 12 million mini cucumbers, 1 million eggplant, and 70,000 heads of lettuce!

The company has partnered with a local energy company which provides natural gas from local gas wells. Natural gas is used to feed engines on the property, which produces electricity, heat, and carbon dioxide – all three of which are used in the greenhouses to grow the plants! Doef's Greenhouses uses a robust heating, irrigation, and plant care system to successfully manage their crops and ensure quality products for its customers. Doef's staff are trained to provide plant care and maintenance in the hot greenhouse setting.

"Being able to produce and sell healthy and fresh vegetables is very rewarding," said Eric Doef, "We sell some of our produce at directly local farmers markets and we really appreciate the interactions with our amazing customers!"

Doef's Greenhouses is partnered with Gull Valley Greenhouses, also in Lacombe County, to sell their fresh produce to various grocery stores and farmers markets under the brand Pik-N-Pak Produce and Lacombe Fresh. Their products, along with quality products from other local artisans, can also be found at their unique and famous self-serve store attached to their Pik-N-Pak Produce packing warehouse, located just east of the Summer Village of Gull Lake.

The company has a wholesale marketing partnership with a group of fellow Southern Alberta greenhouse growers under the brand Big Marble Farms. The

DOEF'S GREENHOUSES

partners are also actively involved with the Alberta Greenhouse Growers Association.

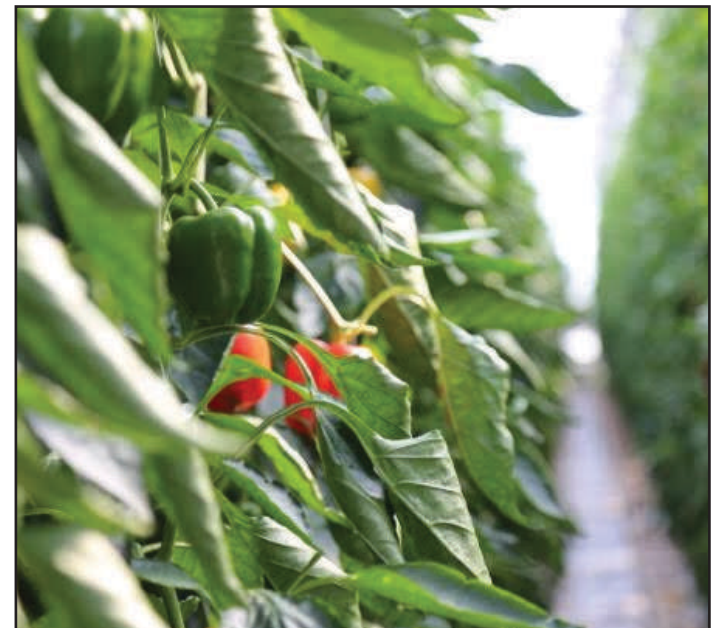
Doef's Greenhouses enjoys its strategic location in Lacombe County as a place to do business. Eric Doef commented, "Lacombe County is agriculture-focused and there are a lot of great businesses and neighbours that have deep roots in the area."

Check Doef's Greenhouses out on social media!

Facebook: [@doefsgreenhouses](#)

Instagram: [@doefsgreenhouses](#)

Twitter: [@doefs](#)



COUNCIL HIGHLIGHTS

August 24, 2023

NUMBER OF DWELLINGS ON AGRICULTURE A DISTRICT PARCELS

The Planning Services Department will complete a community consultation regarding the number of dwellings allowed on Agricultural 'A' District parcels. The community consultation will include conducting a public survey and hosting one in-person public meeting at a central location with a date to be determined.

ENCROACHMENT AGREEMENT AT KUUSAMO KREST – LEBO

Council was provided with a presentation on matters related to the unauthorized use and occupation of Reserve lands and Mr. Lebo's request for approval of an encroachment agreement on Lot 6, Block 1, Plan 567 TR (Kuusamo Krest).

By resolution of Council, the County Manager was directed to enter into an encroachment agreement for the reserve area adjacent to Lot 6, Kuusamo Krest, and request retroactive payment from 2008.

ENCROACHMENT AGREEMENT AT KUUSAMO KREST – METZGER

Council received a presentation on matters related to a deficiency notice for the encroachment agreement for Lot R1, Block 1, Plan 567TR (Kuusamo Krest).

By resolution of Council, the request to amend the encroachment agreement for the reserve area adjacent to Lot 87, Kuusamo Krest, was approved. The property owner will be directed to provide an updated Real Property Report to reflect the amendment.

CITY OF LACOMBE/LACOMBE COUNTY FIRE SERVICES AGREEMENT

The City of Lacombe/Lacombe County Fire Services Agreement was approved by Council. The agreement also confirms the County's commitment to fund 42.5% of the cost of a new fire hall.

OPPORTUNITY FOR MEETING WITH MINISTER OF MUNICIPAL AFFAIRS

The Honourable Ric McIver, Minister of Municipal Affairs, has extended an invitation to meet with municipal Councils at the 2023 Rural Municipalities of Alberta (RMA) Fall Convention. Lacombe County Council agreed to request to meet with the Minister.

COUNTY OF STETTLER DEVELOPMENT REFERRAL

The County of Stettler has referred to Lacombe County a recent development permit application from

Bar W Resort for a recreational vehicle park on PT NE 2-40-20-W4M on the south shore of Buffalo Lake, the site formerly known as 'Paradise Shores'. Lacombe County supports the development permit application, in principle, citing some concerns with supporting studies that accompanied it.

TAX CANCELLATION/PAYMENT PLAN REQUEST – HESC ENERGY CORP.

A resolution that Lacombe County cancel the \$63,170.64 late payment penalties levied on properties owned by HESC Energy Corp. and agree to enter into a three-year payment plan with penalties waived during the term did not receive Council approval.

TAX CANCELLATION REQUEST – PATTERSON

Council approved the cancellation of property taxes in the amount of \$1,098 for the period May 6, 2023 to December 31, 2023 for a residential building that was destroyed by fire located on the parcel of land legally described as NW-32-41-25-W4 (Tax Roll No. 4125323001).

ADMINISTRATION AND PUBLIC WORKS FACILITIES WATER AND WASTEWATER SYSTEM REPAIRS

Council authorized the repair of water and wastewater systems at the County Administration and Public Works facilities at a cost of \$95,000, to be funded through the Municipal Facilities Reserve. The repairs will take place in Fall 2023.

SANDY POINT – REQUEST FOR GOLF CART TRAIL

A number of requests have been received from residents of Sandy Point with regard to the construction of a golf cart trail on the municipal reserve land between the beach and the marina at Sandy Point. A delegation from the Sandy Point Condominium Association will be invited to a future Council meeting to provide a presentation with regard to the request for a golf cart trail.

LACOMBE REGIONAL WASTE SERVICES COMMISSION (LRWSC) LEVYING OF CAMPGROUND TIPPING FEES

By resolution of Council, LRWSC will be notified that the cost of processing solid waste delivered to the Commission's facilities from campgrounds in Lacombe County shall be borne by the respective campgrounds directly.

TOWN OF BLACKFALDS – LETTER OF

REFERENCE RE: ALBERTA BLUE CROSS BUILT TOGETHER GRANT APPLICATION

Council agreed to provide a letter of reference to the Town of Blackfalds in support of their application for the Alberta Blue Cross Built Together Grant. If successful, the grant money will be used to replace outdoor fitness equipment that is currently in disrepair and poses a safety concern.

DISCUSSION WITH MLA JENNIFER JOHNSON

MLA Johnson attended the meeting and addressed questions of Council and provided an overview of the work she has been doing since her election.

EMERGENCY ACCESS ROAD BETWEEN THE SUMMER VILLAGE OF SUNBREAKER COVE (SVSC) AND BLISSFUL BEACH

The County Manager was directed to prepare a report and recommendation for consideration at a future Council meeting regarding an emergency access road between the SVSC and Blissful Beach.

REPAVING OF RANGE ROAD 2-2

The County Manager, in collaboration with the Chief Administrative Officer of the Summer Villages of Sylvan Lake, will prepare a draft memorandum of understanding regarding the cost-sharing of repaving Range Road 2-2. The draft memorandum of understanding will be presented for Council's consideration at a future Council meeting.

ALBERTA RECREATION AND PARKS ASSOCIATION (ARPA) CONFERENCE

Councilor Wilson and Councilor Weenink were authorized to attend the ARPA Conference and Energize Workshop, October 26-28, 2023, at the Fairmont Chateau Lake Louise.

DEVELOPMENT AGREEMENT WITH DELTA LAND CO.

By resolution of Council, Lacombe County shall proceed with the enforcement of Section 13 of the January 2, 2018 amending Development Agreement between Lacombe County and Delta Land Co. Inc. if full payment of the outstanding account is not received on or before September 11, 2023.

LETTER FROM ALEXANDAR FAMILY REGARDING LACOMBE LAKE WATER LEVELS

The letter received from the Alexandar family regarding the water level at Lacombe Lake was received for information.



Council Highlights & Minutes can be found on our website at www.lacombecounty.com/en/our-government/agendas-and-minutes.aspx

Regularly Scheduled Meetings for Lacombe County Council

Committee of the Whole - First Tuesday of every second month at 9 a.m.

Council & MPC - Second and fourth Thursday of every month, starting at 9 a.m..

The public and media are welcome to attend all Council & MPC meetings. An agenda will be posted to the website prior to the meeting.

Rail Safety Week | Stay safe around tracks

Held annually in September, Rail Safety Week is a great opportunity to inform the public about the importance of rail safety and the risks of trespassing and not obeying signs and signals at grade crossings.

Get Involved. Together We Can Save Lives!

Every year, more than 2,100 North Americans are killed or seriously injured because of unsafe behaviour around tracks and trains.

In 2021, there were 120 railway crossing collisions across Canada, 14 fatalities and 23 serious injuries. There were also 60 trespasser incidents, including 41 fatalities and 14 serious injuries.

A motorist is 40 times more likely to die in a crash involving a train than in a collision involving another motor vehicle. Most collisions occur within 40 kms of the motorist's home.

Tips to "BE RAIL SMART"

- Stop a safe distance from tracks and crossings.
- Look both ways to ensure trains are not approaching.
- Listen for approaching trains.

How can you help?

- Say something! Save the CN Police phone number and call if you witness any unsafe situation near the railroad: 1-800-465-9239.
- Act as a role model around trains and tracks.
- Share rail safety tips with your family, friends, colleagues and community.

- If you live in a CN-served community email CN Safety to organize a safety presentation in your local school.

You Can Prevent Railway Crossing and Trespassing Accidents

Rail safety is a shared responsibility and we ask everyone to be especially careful when on or near railroad property and at crossings. Look, listen and live! That's what it means to be rail smart.



RAIL SAFETY TIPS FOR FARMERS

1 • STAY ALERT WHERE FARM FIELDS CROSS TRACKS

Farm crossings often have no warning lights, bells, or signs. While stopped, look in each direction carefully for approaching trains, moving head and eyes to see around obstructions such as mirrors, windshield pillars and implements. When approaching a crossing, open your cab window, turn off radios and fans, remove headsets and listen carefully for oncoming trains.

2 • REMEMBER TRAINS CAN'T STOP QUICKLY

Because of their size, trains appear to be much farther away and travelling much slower than their actual speed. Don't be fooled. Stop safely and no closer than 5 metres from the nearest rail.

3 • KNOW YOUR EQUIPMENT

Some farm machinery isn't easily transported across tracks. Never try to cross with low-slung equipment — it could get lodged in the rails. Make sure there is enough room on the other side of the tracks to fully clear without stopping.

4 • SECURE TOWING EQUIPMENT

Secure hitch pins with a pin key to prevent towed machinery from dislodging over rough farm crossings. Watch wagons and other equipment while crossing to make sure nothing dislodges or falls onto the tracks.

5 • IF YOU GET STUCK, GET OUT

If you stall or get stuck on the tracks, get out of your vehicle immediately and move 30 metres away. Call CN Police or 911 and let them know a vehicle is on the tracks.

6 • CN POLICE NUMBER

Safety is a shared responsibility. If you witness any dangerous or unsafe situations near a railroad, please call **1-800-465-9239**.

RAIL SAFETY TIPS

1 • SPEED MISPERCEPTION

Because of their size, trains appear to be much farther away and travelling much slower than their actual speed. Don't be fooled!

2 • TRAINS CAN'T STOP QUICKLY

The average train needs at least 2 km to stop. Trains can stop, but they can't stop quickly!

3 • TRESPASSING

Taking a shortcut across the tracks or being on railway property is illegal, and trespassers can be seriously injured or killed.

4 • WEIGHT RATIO

An average freight train weighs over 5,500 tonnes. Compare that to a car, which weighs about 1.5 tonnes. A train hitting a car is like a car hitting a pop can.

5 • RAILWAY CARS

Stopped railway cars can move at any time. If you're on one or near one when it moves, you could lose a limb — or worse, your life.

6 • TUNNELS AND BRIDGES

Tunnels, bridges, and trestles are designed only for trains. Trespassers can be seriously injured or killed.

7 • OVERHANG

Trains can carry loads that are wider than the railroad cars themselves. They can have chains, straps or other equipment that may extend outside the car. If you are standing too close, you could get hit.

8 • ANY TIME IS TRAIN TIME

Trains do not always run on schedule. They can run at any time, on any track and come from either direction.

9 • CN POLICE NUMBER

Together we can help save lives! If you witness any unsafe situation near a railroad, please call **1-800-465-9239**.

10 • SAFETY PLEDGE

Act today. Take the pledge at mysafetypledge.com.



Trains are always much closer than they appear.
Look, listen and be ready to stop.



FIRE PERMIT SEASON

is March 1 - October 31

Do you have a Fire Permit?
SUBMIT IT ONLINE BEFORE BURNING!



mobile requests through the website



online Fire Permit Request

Fire permits can also be requested over the phone (403-782-6601) or in person at our office.

DID YOU KNOW? Special Event Insurance

If you are holding an event at one of our community halls, we recommend taking out special event insurance to protect you from any accidents that could occur.

Weddings | Bridal Showers
Family Reunions | Sporting events
Birthday Parties




Rental locations are programmed in so renters can go onto the Instant Risk Coverage (IRC) website and select the location they wish to use.

Learn more at: www.lacombecounty.com/halls

DID YOU KNOW?: Instant Risk Coverage (IRC) is an online platform that a third-party renter can go onto, complete the information, and get a policy in place for their event. The nice thing about it is that rental locations are programmed in so, a renter can actually just go on and select the location they wish to use. IRC automatically adds Lacombe County as an Additional Insured and a Certificate of Insurance is automatically sent to the County when coverage is placed.

If you're hosting event - wedding, bridal shower, family reunion, etc. - make sure to take out special event insurance to protect yourself from any accidents that could occur.

Learn more at <https://www.lacombecounty.com/halls>.




FLASHING LIGHTS? SLOW DOWN. MOVE OVER.

New rules to protect roadside workers.

Effective September 1, 2023

When you see police, ambulances, fire trucks, tow trucks, or highway maintenance vehicles with their lights flashing stopped on the side of the road, you must slow down to at least 60 km/h. If you can, move over to the far lane to give workers extra space.

Learn more:
alberta.ca/RoadWorkerSafety



If you notice a broken or missing sign on a County road, call us ASAP!!





Phone: 403-782-6601
Email: info@lacombecounty.com

Facebook (@LacombeCounty)
Instagram (lacombecounty)
Twitter (@LacombeCounty)

Ellis Bird Farm - Get your visit in before October 15

Hello everyone, and happy autumn! The staff here at Ellis Bird Farm wanted to extend a sincere thank you to everyone who came by and visited us this summer. Because of all of you, we had a successful season helping the thousands of visitors who came to our site.

As always, our Bluebird Festival and Bug Jamboree were both a huge success, with many visitors learning about the importance of bird conservation and delving into the amazing world of bugs.

Our Knee High Nature program was also a hit, with kids of all ages joining us to learn about the animals, insects, and birds that call Central Alberta home. We also hosted several other amazing events that were well received such as paint nights,

birding walks, bat night, weed pulls, and our Alberta Culture Days Indigenous teachings event.

The fan favourite was of course the goats, which came to us for the summer from the Eco-Club at Lacombe Composite High School. Between feeding the goats and walking them, they were a massive hit with all of our visitors.

Our last day this year will be October 15, so make sure you come pay us a visit before then! Again, our sincerest thanks for all who were able to visit us this year and share their time with us. Your support allows us to ensure we can carry on the legacy of Charlie and Winnie Ellis for years to come.

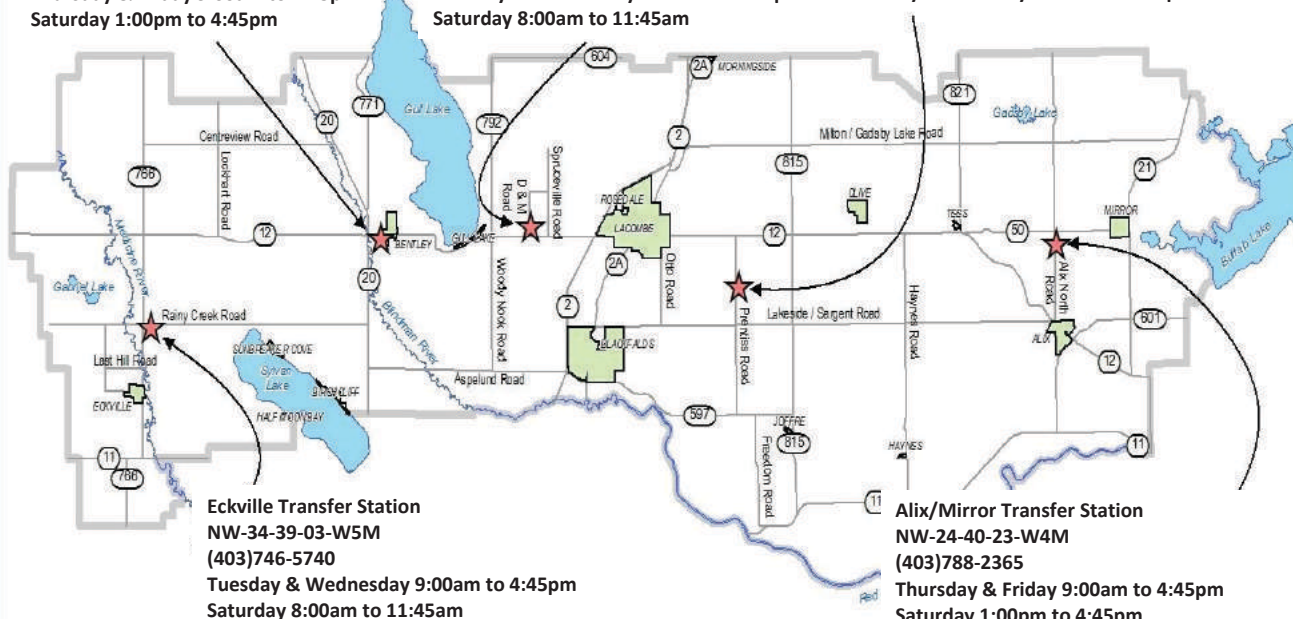


Lacombe Regional Waste Services Commission (LRWSC) Transfer Stations Hours of Operation

Bentley Transfer Station
NE-22-40-01-W5M
(403)748-3961
Thursday & Friday 9:00am to 4:45pm
Saturday 1:00pm to 4:45pm

Spruceville Transfer Station
NW-29-40-27-W4M
(403)782-2828
Tuesday & Wednesday 9:00am to 4:45pm
Saturday 8:00am to 11:45am

Prentiss Landfill/Transfer Station
NW-07-40-25-W4M
(403)782-5300
Monday to Saturday 9:00am to 4:45pm



All transfer stations are closed on the following statutory holidays:
New Years Day, Thanksgiving, Good Friday, Remembrance Day,
Christmas & Boxing Day.

Maintenance on Provincial Highways

Please note: Alberta Transportation maintains and operates ALL NUMBERED highways in the County (i.e. Hwy 12, Hwy 20, Hwy 597, Hwy 815, Hwy 601, Hwy 2A, etc.).

If you see any issues or have any concerns on these roadways, please contact:

Mainroad Alberta Contracting LP
1-877-875-3263

AROUND THE COUNTY

Make a **SPLASH** at the Kinsmen Aquatic Centre 5429 53rd Street, Lacombe AB

What's Happening at the pool:

- Junior Lifeguard Club has started, spots are still available.
- The Kinsmen Aquatic Centre is closed Oct 2-22, 2023 for scheduled maintenance.
- Winter program registration opens Oct 24, 2023 at 8:30 am.
- Halloween Bash Oct 27, 2023, time TBD, Tickets will go on sale the beginning of October. Watch the website for more information.

For more information on the KAC schedule, pool rentals and advanced courses call 403.782.1277 or visit www.lacombe.ca/pool.



WHAT WE DO

Alix and Area Community Resource Centre

FALL 2023

Baby Clinic Returns:

Every 3rd Wednesday appointments can be made, to book routine child immunizations.

Please call: Stettler Health Unit, 403-742-3326.

Ongoing and for Everyone!

Fresh veggies are delivered weekly to the Centre, typically available for pick-up on Tuesday mornings. Thank you Pic N Pac for the generous donation! Free for everyone and while quantities last. Please limit to one bag per person to help items go further.

Winter Escapes: Online Facebook Auction

We are currently preparing for our first excursions/ experiences online auction, in conjunction with the Fall 2023 Giving Campaign. Please let us know if you are interested in donating an auction item or a monetary donation towards a package for the auction.

We are looking for: Services, Gift Certificates, Experiences. Basically we want to get you out of the house during the coming season! (For example ski passes, sporting events, bowling passes, dinner + movie, etc.). Please contact Jill, 403-588-5199.

We're Hiring: Family Wellness Worker Position

Assignment: Part-Time position (15 hrs/wk approx) in Alix, AB. Specific details regarding this position can be obtained from:

Alix & Area Community Resource Centre

Interested candidates are invited to submit applications to:

Jill Hillman, Executive Director

Alix Mirror Wellness Supports Society

Box 715

Alix, AB T0C 0B0

Fax: (403) 747-2082

Services Available

- Information & Referral
- Resource Navigation
- Volunteer Services
- Family Wellness
- Meals on Wheels
- Community Services
- Adult Learning
- Alix Food Bank
- Wise Owls

alixmirrorwellness@gmail.com

Follow us on Facebook
@AlixandAreaCommunityResourceCentre

www.alixcrc.com

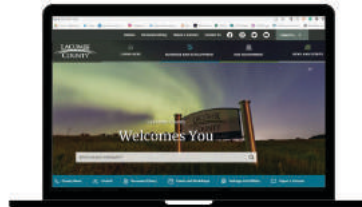


STAY IN THE KNOW!



<https://subscribe.lacombecounty.com/Subscribe> to receive emails on:

News/Announcements Events
Council Meetings
Safety Alerts
Construction Notifications



Scan & Subscribe

OR...Subscribe to individual pages of interest

Monday to Thursday 10:00 AM - 4:00 PM

Closed all statutory holidays

Bay 1, 5008 50 Ave, Alix, AB

403-396-3369

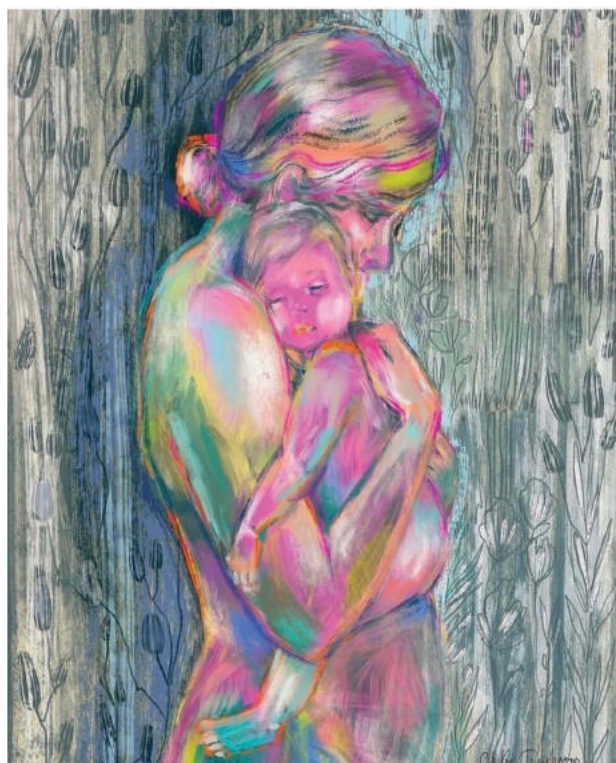


Image from Jess Urlich, Writer

Mother's Grace Postpartum Support Group

Collaboration with Lacombe Addiction & Mental Health and Lacombe Family Resource Network.

We are offering a support group for mothers who are within the first 18 months of post-partum.

FREE & CONFIDENTIAL
Child Care Provided

Dates: Wednesday, September 13, 20, 27
Wednesday, October 4, 11, 18, 25
Wednesday, November 1

Time: 1:30 pm to 3:00 pm

Place: Lacombe First Baptist Church
27008 Township Road 405.5
Lacombe, Alberta

Register by calling Lacombe Addiction
and Mental Health at 403.782.3413



ST. STEPHEN PARISH

Fall Supper

SUNDAY - OCTOBER 29, 2023

Two Sitzings @ 4:30 & 6:30

At: St. Stephens Parish Hall
5128 - 53 Street | Lacombe, AB

COST: \$25.00 PER TICKET

TICKETS AVAILABLE FROM
MARILYN MARIANNA PARISH OFFICE
403-358-9384 403-782-5576 403-782-3514

RESERVED TABLES OF 8 AVAILABLE
WINE & BEER AVAILABLE

fcss
Lacombe & District
Family and Community
Support Services

Lacombe Connex

LACOMBE COUNTY

Did you know?
County residents within 20 km of Lacombe can book the bus for errands & medical appointments.



Please call 403-782-6637 for more information or to reserve your spot

HOME SUPPORT SERVICES FOR SENIORS



Home Support is available to eligible seniors needing assistance with light housekeeping in Lacombe and Lacombe County.

- ✓ Trained & screened Home Support Providers
- ✓ Weekly
- ✓ Bi-weekly
- ✓ Monthly

Services Offered

- Laundry
- Kitchen
- Bathrooms
- Living Rooms
- Dusting
- Mopping
- Vacuuming
- Meal prep assistance

Contact Lacombe & District FCSS:
(403) 782-6637

Supported by:




lacombe memorialcentre

The perfect place for people to connect.

Book your upcoming event now!

- training/workshops
- anniversaries
- celebrations of life
- meetings
- weddings
- exercise classes

Visit www.lacombe.ca/lmc or call 403-782-6668

Home of Anna Maria's Cafe, Mary C. Moore Public Library, Lacombe & District FCSS and the Lacombe & District Chamber of Commerce.

Need financial assistance with room rentals?
See if you qualify at lacombe.ca/grants

CONNECT

gull lake centre



Experience the beauty of Gull Lake Centre.

Gull Lake Centre is designed with event flexibility in mind.

Our incredible facilities and amenities can be used by groups from 20-250 people. Whether you are planning a conference, retreat, or family reunion, our space is versatile and accommodating.

We are open year round for event rentals! For more information on pricing, specific amenities and rental spaces, visit gulllakecentre.ca/rentals




Lacombe & District Chamber of Commerce

PASSPORT TO Christmas

Sign your business up today!
INFO@LACOMBECHAMBER.CA
403.782.4300



HOMESCHOOLING AT THE LIBRARY
ALTERNATE FRIDAYS 10AM-12

Spend your morning with other homeschoolers! Hands-on learning and activities; snacks; community.

SEPTEMBER 29TH
POETRY TEATIME
DISCOVER POETRY OVER TEA AND SNACKS

OCTOBER 20TH
MAKERSPACE
SNAP CIRCUITS

OCTOBER 27TH
POETRY TEATIME
DISCOVER POETRY OVER TEA AND SNACKS

NOVEMBER 10TH
MAKERSPACE
PAPER AIRPLANES

NOVEMBER 24TH
POETRY TEATIME
DISCOVER POETRY OVER TEA AND SNACKS

DECEMBER 8TH
CHRISTMAS MAKERSPACE
CHRISTMAS CRAFTS

Free drop in program at Mary C. Moore Public Library
Contact Kirstin for further information kbouwsema@prl.ab.ca

Coming in September

Games Afternoon
Scrabble
Euchre
and more!

every other Thursday 2pm
Starting Sept 21st

Free For Adults

Hosted by
Mary C Moore Public Library in
the Kinsman Room
2nd floor of the LMC



Mary C Moore Public Library

Family Crafts & Makerspace

multiple stations with STEAM activities for all ages and abilities including:
Science projects
Arts & Crafts
+ more!

PD Day
Friday 20th October
2:00PM-3:30PM
Free program! Please register starting October 1st

parents are required to stay with young children



HAS YOUR ADDRESS CHANGED?



If Canada Post has made a recent change to your mailing address, please let us know!!

Contact Lacombe County by calling 403-782-6601.

Bentley Stay & Play
 Basement of Bentley
 Town Office
 9:30-11:30
 Fridays
Come Play Today!
 Families with children 0-7
 Bring a snack for your family!

FREE

No Class October 6th, 2023

Carolyn McLaren
 parentingproactively101@gmail.com
 403-704-3315

PHCD
 (Principles of Healthy Child Development)
TRAINING IS AVAILABLE IN YOUR AREA

What is it?
 A one-day training that teaches front-line leaders how to enhance the quality of the programs they are delivering. It provides in-depth knowledge of the HIGH FIVE® Principles of healthy child development so front-line leaders understand what they need to do to ensure each child's social, emotional and cognitive needs are met.

Who is it for?
 Front-line leaders or anyone working with children aged 6 to 12 (i.e. instructor, camp counsellor).

Why does it matter?
 Leaders have a major impact on a child's positive experience. The training is based in research and has been designed to equip leaders with activities, knowledge, tips and resources addressing key topics like bullying, conflict resolution, physical literacy, children's mental health and moderate to vigorous physical activity. They also learn to enhance their relationships with children and other staff members.

Training Details:
INTERESTED?
 Call 403-782-1251 or email recreation@lacombe.ca or add your name directly to the interest list at www.lacombe.ca/highfive

Training Delivered by:
 CITY OF LACOMBE

For further information about HIGH FIVE® training visit www.HIGHFIVE.org

MORNINGSIDE HALL
 Presents a Family
HALLOWEEN PARTY



FRIDAY OCTOBER 27, 2023, 7 PM TO 11 PM
 PLEASE COME DRESSED IN A COSTUME
 PLEASE BRING A SHAREABLE SNACK OR TREAT.
 COFFEE, TEA AND JUICE PROVIDED
 CASH BAR

BENTLEY BOUTIQUE
 Use west entrance beside bay door.
 Bentley Long Term Care Facility
 4834 - 52 Avenue, Bentley

Open Tues/Thurs 10-12 & 1-3

Items for all ages & sizes.
 Next to new clothing donations welcome!


 REUSE
 RECYCLE
 RETHINK

Volunteer Coordinator
 Sandy
 403.318.0270

Bentley Community Services
 403.748.2160

BIG THANK YOU TO MORNINGSIDE RANCHES FOR DONATING ¼ OF CUT AND WRAPPED BEEF FOR THE MORNINGSIDE COMMUNITY HALL FUNDRAISING RAFFLE TO UPGRADE THE OUTDOOR RINK. THE WINNER OF THE RAFFLE WAS EARL LOVELACE.

fcss
 Lacombe & District
 Family and Community Support Services

SENIORS' EXPO
 Lacombe's first Seniors Expo!
 Guest speakers, breakout sessions, trade show, and more!

Monday, October 23 \$2.00/person
 7-9 pm - BodyBreak with Hal and Joanne

Limited Seating!

Tuesday, October 24 - \$20.00/person
 8:30 am - 4:00pm - Seniors Expo - Sessions, Speakers & Trade Show - breakfast and lunch included

LMC, Lacombe AB

REGISTER TODAY!

www.lacombefcss.net
 403-782-6637


 ODYBREA
 keep fit and fun



GALA AWARDS

Hosted by Howie Miller

FRIDAY
OCTOBER 20th

AT LACOMBE MEMORIAL CENTRE
 DOORS OPEN AT 06:00PM

The Event
**GALA AWARDS
 DINNER & DANCE**

TICKET
\$90
 per Person

For more information:
 403.782.4300
info@lacombechamber.ca



Upcoming Events @ HAYNES HALL

Oct.18: Haynes Hall Annual Harvest Dinner
Doors Open at 5pm

Oct. 27: Halloween Social (Adults Only)
Doors Open at 8pm

EVERYONE IS WELCOME TO JOIN US

FALL FESTIVAL

SEPTEMBER 27 FROM 3:30 TO 8 PM

BENTLEY AG CENTRE

FOOD - MUSIC - KIDS ZONE
VISIT WITH NEIGHBORS - MEET NEW ONES
LEARN ABOUT THE COMMUNITY

Picking up your kids from school? Stop on the way home for a snack & some fun!

Wild West Fiddlers
5 to 8 pm

See you there!

TOGETHER WE ARE BETTER!

Partners: Bentley, Nutrien Ag Solutions, fcss, Lacombe Regional Tourism, McMan

Fall Festival is in recognition of September 28th, National Good Neighbor Day

servus credit union
PUBLIC LIBRARY BLACKFALDS

Open:
Mon. & Wed. 10am - 8pm
Tues., Thurs. & Fri. 10am - 6pm
Sat. 10am - 5pm
Sun. 1pm - 5pm

Memberships are free at The Blackfalds Public Library for Blackfalds and Lacombe County residents!

We have a lot of exciting free programs for all from babies to adults. Check out our socials for our current program calendars and pop up events.

@BLACKFALDSLIRARY

Located in the Eagle Builders Centre
5302 Broadway Avenue
403-885-2343

Registration required for
Seated Range of Motion Chair Yoga
Move your body, make connections & socialize!
Call 403.748.2160

Hosted At The Seniors Drop In

located in the Town Office 4918-50 Avenue

Seated Range of Motion -ROM

Join us for this seated exercise program. Research has shown that range of motion exercise has many benefits, including:

Increased mobility, maintenance, and function of joints. Improved movement efficiency. Increased Independence. Decreased pain.



MONDAY
10 to 11am



WEDNESDAY
10:30 to 11:45

Chair Yoga

Never worry about falling or about your mobility level again. This class is designed to accommodate for those in wheelchairs, or who are concerned about their balance. The class is stretch-worthy while still being relaxing. It's the perfect balance for those looking for a yoga class that meets their mobility needs.



PARTNERS:

BENTLEY SENIORS DROP IN, FCSS/TOWN OF BENTLEY
EDMONTON SENIORS CENTRE, BRENDA STAFFORD FOUNDATION/REC@HOME

FOUR EYES FILM SERIES PRESENTS

What's Love got to do with it? SEPT 20
BONES & CROWS OCT 18
PAST LIVES NOV 15
Jules DEC 13

FILMS SCREEN AT 7PM @ LACOMBE CITY CINEMAS

BRINGING INDEPENDENT, INTERNATIONAL, INSPIRING AND IMAGINATIVE FILMS TO YOUR TOWN. ONE NIGHT PER MONTH
PRESENTED BY MARY C MOORE PUBLIC LIBRARY
IN PARTNERSHIP WITH LACOMBE CITY CINEMAS AND FILM CIRCUIT

ADVANCE TICKETS AT THE LIBRARY 2 WKS PRIOR TO EACH FILM \$9
LIMITED TICKETS AVAILABLE AT THE DOOR \$10

tiff **FILM CIRCUIT**



The Opportunity?

To set up the Senior Drop In zoom sessions for



Monday - Range of Motion 10am to 11am
Wednesday - Chair Yoga 10:30am to noon
Fridays - (TBA) Range of Motion

The Perks?

- Be a valued volunteer - contributing to the health and wellness of those attending.
- Hang out with a great group of people and partake in the sessions!

The Commitment?

- Choose the days you can commit, although weekly would be awesome!
- If you are not aware of how to set up the computer & zoom, don't let that keep you away. We are happy to teach you! 😊



These programs are offered free for 55+



OCTOBER 2023

Sun	Mon	Tue	Wed	Thu	Fri	Sat
1	2	3 Committee of the Whole meeting	4	5	6	7
8	9 THANKSGIVING (Office Closed)	10	11	12 County Council 9AM	13 County News (Submissions Due)	14
15	16	17	18	19	20 County News published	21
22	23	24 Council Organizational Meeting	25	26 County Council 9AM	27	28
29	30	31 HALLOWEEN	NOV 1	2	3	4

Upcoming Events: November 13 - Office Closed (in lieu of Remembrance Day) November 14 - County Council
November 16 - Agreements in Agriculture workshop (see Page. 11 for details) November 23 - County Council
November 24 - 2024 Budget Meeting

Help us promote
YOU!



Do you know a **business, person, place or volunteer** you want to see profiled in County News?

Do you have a photograph you want to share?

If so, email **communications@lacombecounty.com** with your ideas, photographs or stories.

We'd love to hear from you!

Proudly Maintaining Your Highways
Counties: Lacombe | Ponoka | Red Deer | Wetaskiwin

Report road conditions 24/7
1 877 875 3263



Lacombe County Directory

RR3, Lacombe Alberta T4L 2N3 www.lacombecounty.com

Department Numbers:	Main Office - 403-782-6601
	Planning Services - 403-782-8389
	Community Services - 403-782-8959
	Operations - 403-782-8379
	Public Works Shop - 403-782-3567

General	
After Hours Emergency Answering Service	403.357.1210
Administration Fax	403.782.3820
Public Works Fax	403.782.5356

For Service Requests, see our website - or phone the switchboard at 403-782-6601

Senior Administration	
Tim Timmons, County Manager ttimmons@lacombecounty.com	Call 403-782-6601 to speak with the County Manager or with a Lacombe County Director
Michael Minchin, Director of Corporate Services mminchin@lacombecounty.com	
Bill Cade, Director of Operations bcade@lacombecounty.com	
Dale Freitag, Director of Planning Services dfreitag@lacombecounty.com	
Dion Burlock, Director of Community Services dburlock@lacombecounty.com	

Council	Home	Cell
John Ireland, Div. 1 (jireland@lacombecounty.com)		403.392.3981
Brenda Knight, Div. 2 (bknight@lacombecounty.com)	403.788.2168	403.550.2168
Barb Shepherd, Div. 3 (bshepherd@lacombecounty.com)		403.340.9724
Dwayne West, Div. 4 (dwest@lacombecounty.com)		403.660.2328
Ken Weenink, Div. 5 (kweenink@lacombecounty.com)		403.350.8014
Allan Wilson, Div. 6 (awilson@lacombecounty.com)		403.506.3735
Dana Kreil, Div. 7 (dkreil@lacombecounty.com)	403.746.3607	403.358.9400

Follow us online, and stay up-to-date on Lacombe County news, events and other information!

facebook.com/LacombeCounty

instagram.com/lacombecounty

twitter.com/LacombeCounty

youtube.com/LacombeCounty

www.lacombecounty.com

Phone | 403.782.6601 Email | info@lacombecounty.com Fax | 403.782.3820

COUNTY NEWS

is published by Lacombe County and printed by CentralWeb.
If you have feedback or story ideas, please contact:

Nicole Plewis, Communications Coordinator
communications@lacombecounty.com
403.782.6601