



THE HAMLET OF MIRROR
**DEVELOPMENT
INCENTIVE
GRANT**

INFORMATION PACKAGE





Why has Lacombe County introduced the Development Incentive Grant in the Hamlet of Mirror?

Lacombe County's Municipal Development Plan identifies the Hamlet of Mirror as a growth hamlet. The County is committed to continuing to support the Hamlet of Mirror's growth and sustainability. New commercial and industrial growth in Hamlet of Mirror's designated commercial and industrial land use areas will help ensure local economic development opportunities are available in the hamlet so it can continue to grow and maintain its vibrant community.

As such, to incentivize new or expanded industrial and commercial business development in the Hamlet of Mirror, Lacombe County is offering the Development Incentive Grant to help reduce the pressure of property tax expenses.

Eligibility criteria

To be eligible for approval, the following prerequisites must be met. Please contact Planning Services to verify eligibility.

1. A development permit must be obtained from Lacombe County for the proposed business.
2. The lands on which the development is proposed must be located within the Hamlet of Mirror.
3. The lands must be zoned either Hamlet Commercial 'H-C' District or Hamlet Industrial 'H-I' District at the time of application submission (see map on Page 4)
4. If an application is for a new business, the new industrial or commercial development must take place on a previously non-improved parcel OR an improved parcel with an unoccupied principle building.

Please note that alternative energy microgeneration, dwelling units, mobile vendors, parking structures, security/operator suites, and special events are ineligible for the program.



The Incentive

NEW BUSINESSES

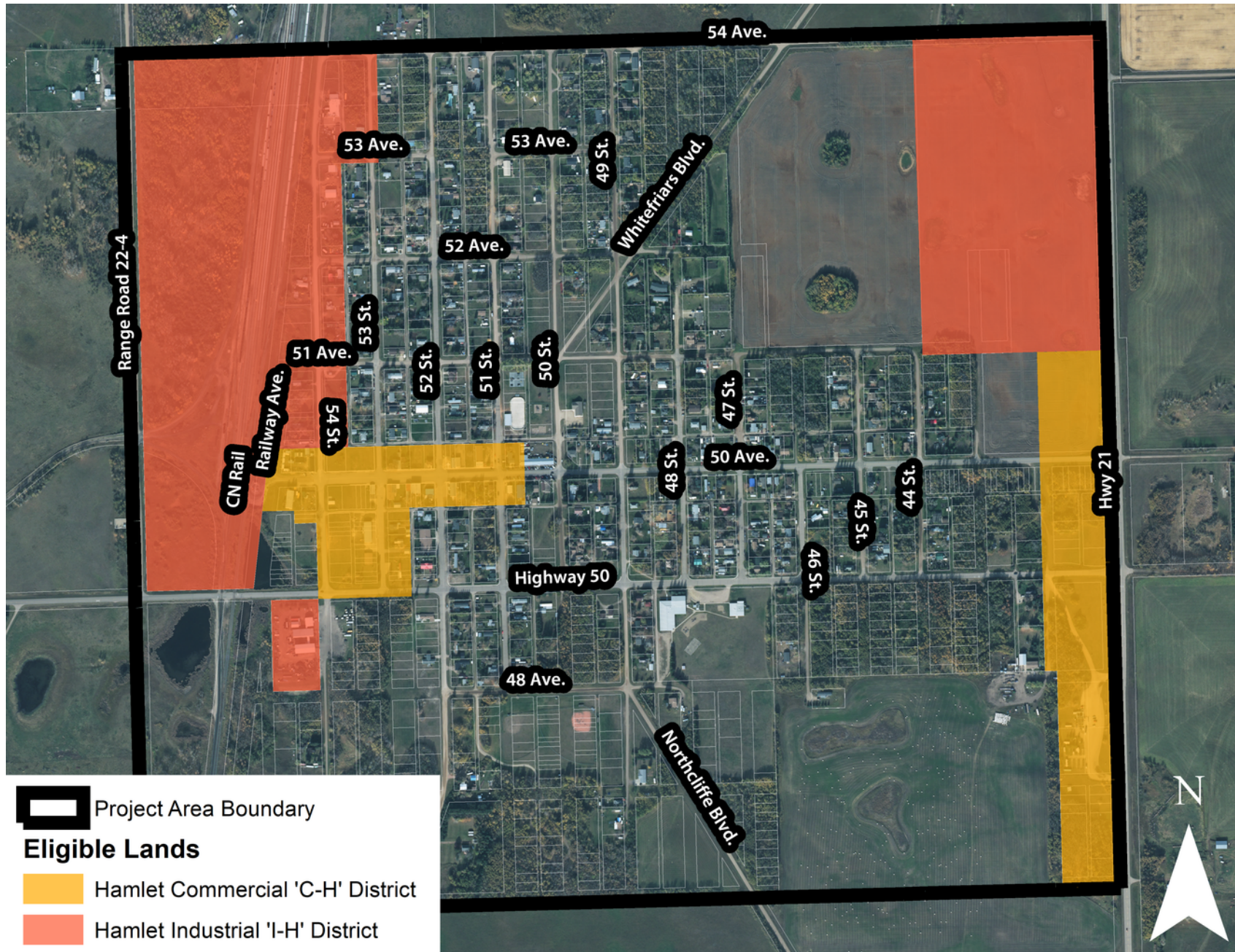
Provided all program eligibility criteria are met, new businesses are eligible for a 100% rebate of the municipal portion of property taxes, decreasing by 10% annually for 10 years. This means in the first year of operation, a business will receive a rebate of 100% of the municipal portion of their property tax. In the second year, it will be 90%, third year 80%, and so on. The program ends in the after the tenth year.

YEAR	PROPERTY TAX REBATE
1	100%
2	90%
3	80%
4	70%
5	60%
6	50%
7	40%
8	30%
9	20%
10	10%
11	0%

EXPANSIONS TO EXISTING BUSINESSES

Provided all program eligibility criteria are met, expansions to existing businesses can receive a one-time rebate of 100% of the net increase in municipal property taxes that result from the improvement to the business, for one year.

Map 1 - Eligible Lands



**For full program
details and other
considerations, ask
Planning Services!**



Email

planning@lacombecounty.com



Website

www.lacombecounty.com



Phone

403-782-8389