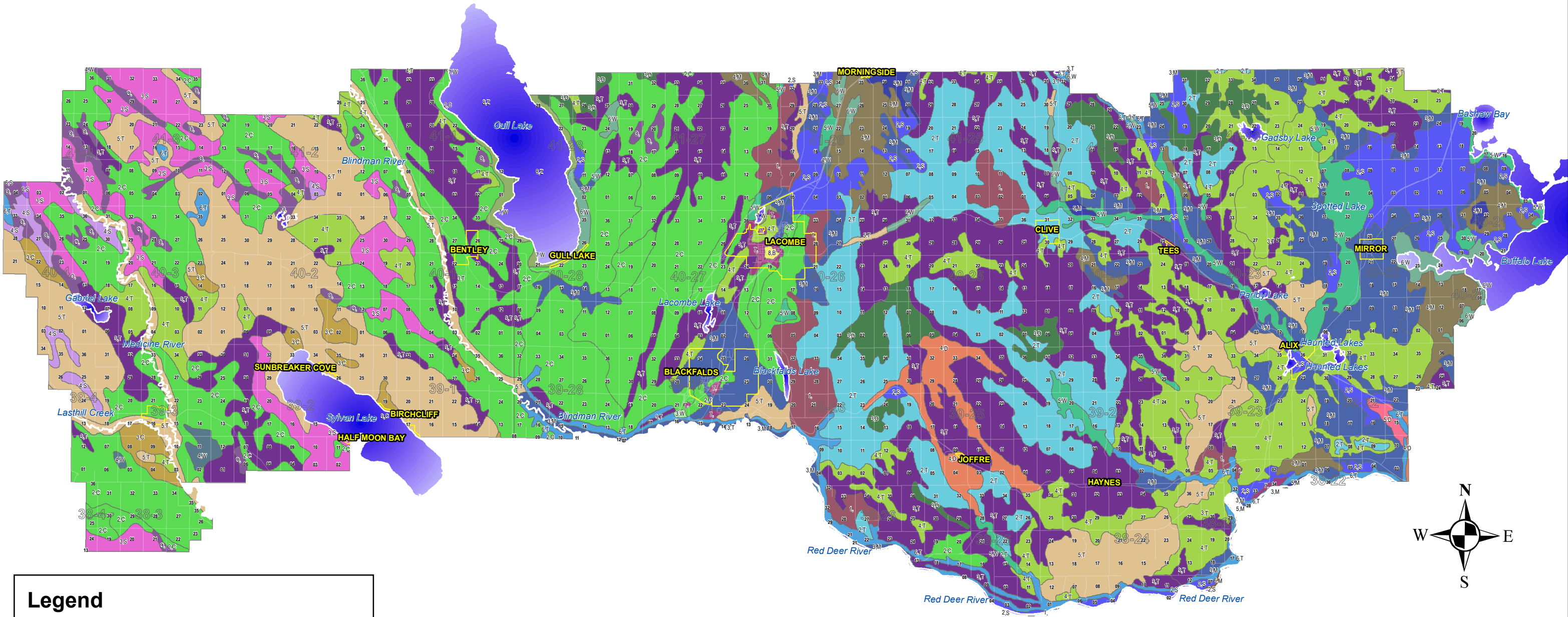


Lacombe County: Canada Land Inventory (CLI) Soil Capability Map



Legend

Class, Subclass	3, W	6, M
1,	4, D	6, S
2, C	4, M	6, T
2, S	4, S	6, W
2, T	4, T	7,
3, C	4, W	7, W
3, D	5, D	8, B
3, M	5, M	8, Z
3, S	5, T	O,
3, T	5, W	



Class	Description
1	Soils in this class have no significant limitations in use for crops.
2	Soils in this class have moderate limitations that restrict the range of crops or require moderate conservation practices.
3	Soils in this class have moderately severe limitations that restrict the range of crops or require special conservation practices.
4	Soils in this class have severe limitations that restrict the range of crops or require special conservation practices.
5	Soils in this class have very severe limitations that restrict their capability in producing perennial forage crops, and improvement practices are feasible.
6	Soils in this class are capable only of producing perennial forage crops, and improvement practices are not feasible.
7	Soils in this class have no capacity for arable culture or permanent pasture.
0	Organic Soils (not placed in capability classes).

Subclass	Description
C	Adverse climate
D	Undesirable soils structure and/or low permeability
E	Erosion
F	Low fertility
I	Inundation by streams or lakes
M	Moisture limitations
N	Salinity
P	Stoniness
R	Consolidated bedrock
S	Combination of subclasses
T	Topography
W	Excess water
X	This Subclass is comprised of soils having a limitation resulting from the cumulative effect of two or more adverse characteristics